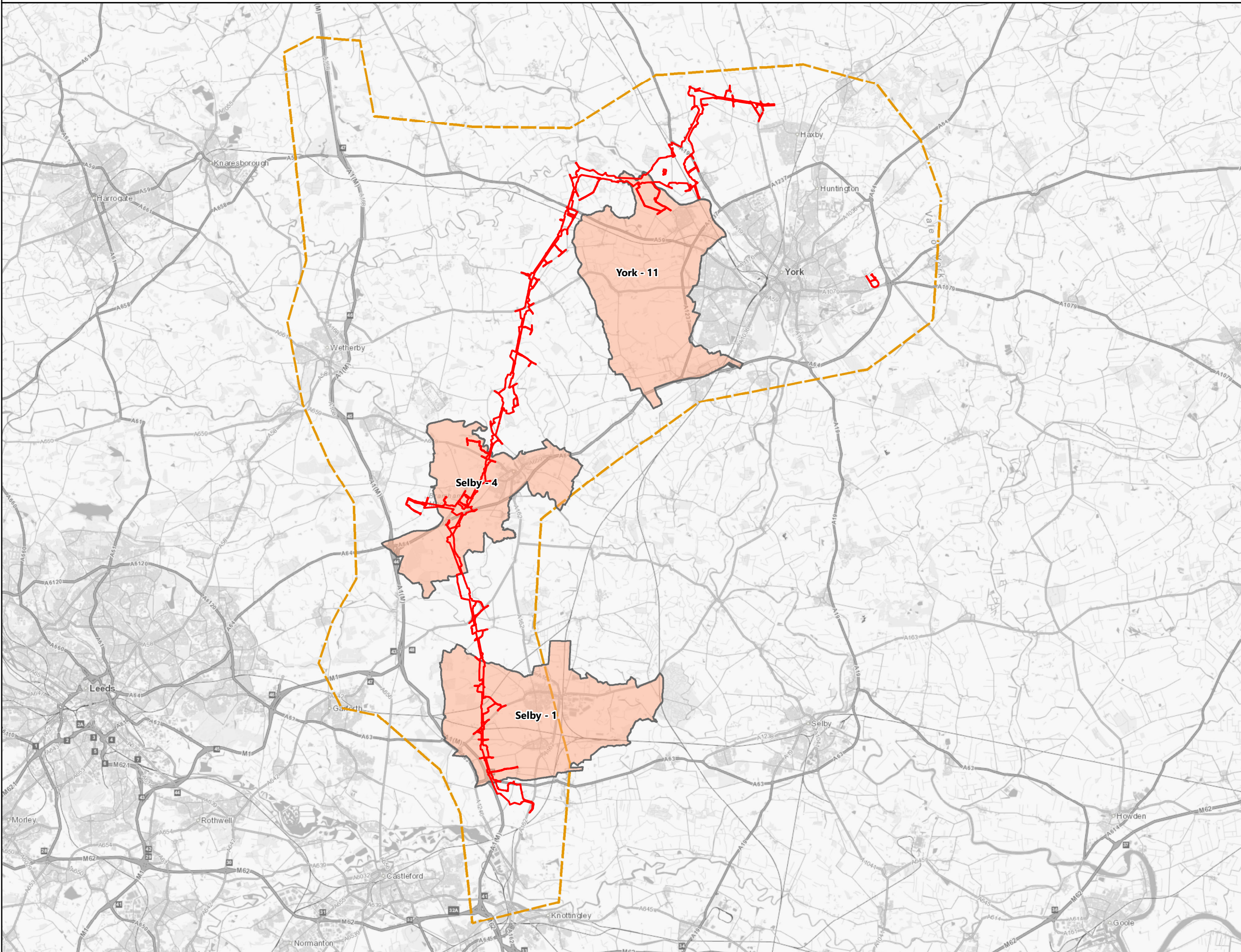




CENSUS AREAS USED TO DEFINE LV DISTRIBUTION

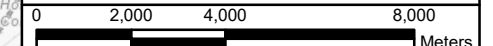
- Legend**
- Draft Order Limits
 - Study Area
 - Census Areas



Notes
 This drawing is scaled at paper size A3, therefore any prints taken at smaller sizes will affect accuracy of the measurement units and should not be scaled against.



Coordinate System: British National Grid
 Sheet X Centroid Coordinate: 453,394.96 Sheet Y Centroid Coordinate: 443,094.07



BACKGROUND MAPPING INFORMATION HAS BEEN REPRODUCED FROM THE ORDNANCE SURVEY BY PERMISSION OF ORDNANCE SURVEY OF THE CONTROLLER OF HER MAJESTY'S STATIONERY OFFICE. © CROWN COPYRIGHT ORDNANCE SURVEY. NATIONAL GRID ELECTRICITY - 100024241. NATIONAL GRID GAS - 100024886.

1	OCT 21		SUTET	DIMMR	CHADC
Issue	Date	Remarks	Drawn	Checked	Approved

Title
 PRELIMINARY ENVIRONMENTAL INFORMATION REPORT
 CHAPTER 12: TRAFFIC AND TRANSPORT
 CENSUS AREAS USED TO DEFINE LV DISTRIBUTION



Figure Number
 FIGURE 12.12

Drawing Reference
 806503-WOOD-0098

Scale	Sheet Size	Sheet	Issue
1:160,000	A3	SHEET OF	1