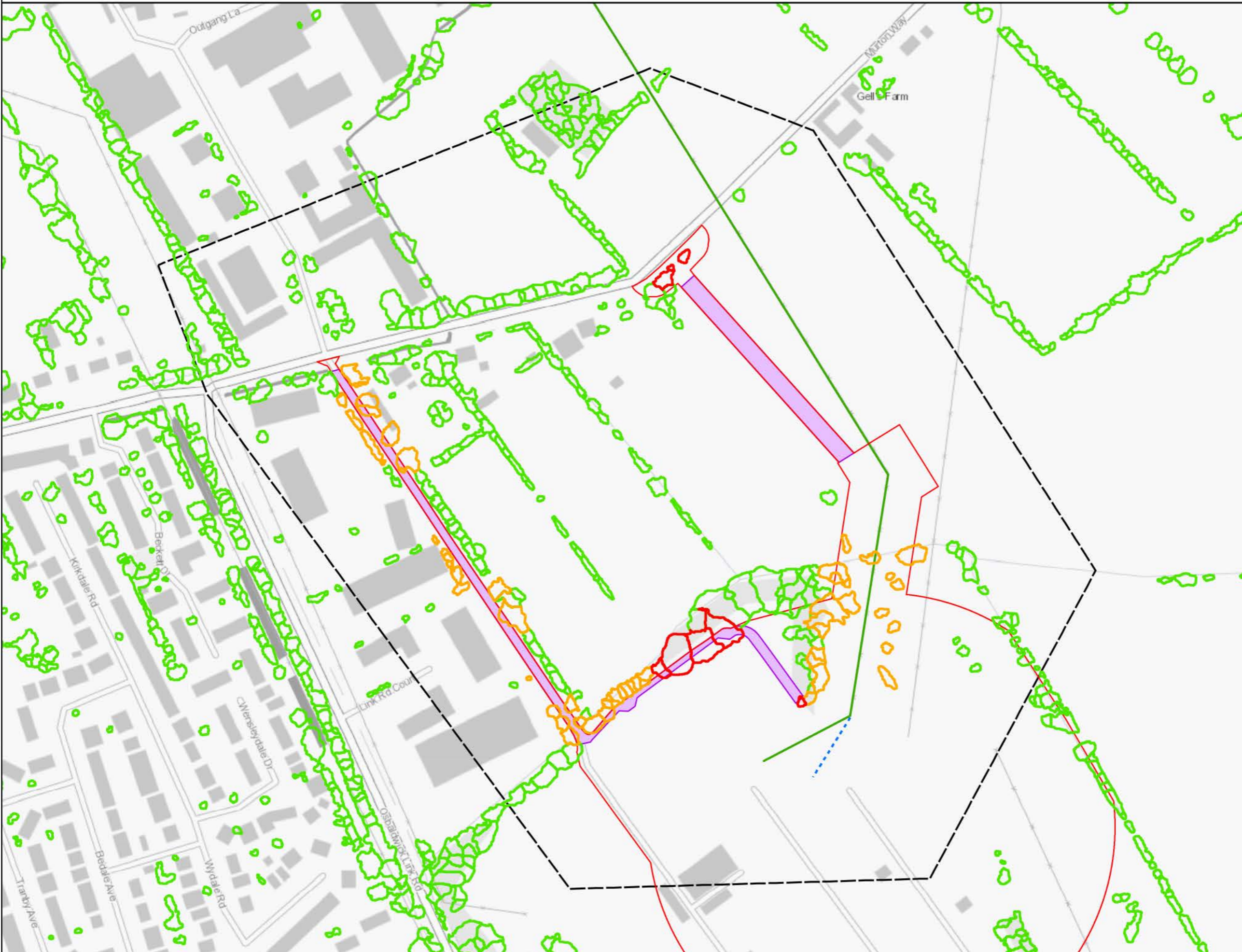




OUTLINE TREE REMOVAL AND IMPACT PLAN FOR PEIR



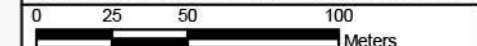
Legend

- Draft Order Limits
- 400kV OHL
- Existing OHL
- Substation
- Construction compound
- CESC area
- Indicative accesses
- Permanent
- Temporary
- Arboricultural study area
- Trees likely to be removed
- Potentially removed or impacted trees
- Retained trees

Notes
This drawing is scaled at paper size A3, therefore any prints taken at smaller sizes will affect accuracy of the measurement units and should not be scaled against.



Coordinate System: British National Grid
Sheet X Centroid Coordinate: 464,119.20 Sheet Y Centroid Coordinate: 451,887.40



BACKGROUND MAPPING INFORMATION HAS BEEN REPRODUCED FROM THE ORDNANCE SURVEY BY PERMISSION OF ORDNANCE SURVEY OF THE CONTROLLER OF HER MAJESTY'S STATIONERY OFFICE. © CROWN COPYRIGHT ORDNANCE SURVEY. NATIONAL GRID ELECTRICITY - 100024241. NATIONAL GRID GAS - 100024886.

1	SEP 21		COLLJ	DIMMR	CHADC
Issue	Date	Remarks	Drawn	Checked	Approved

Title
**PRELIMINARY ENVIRONMENTAL INFORMATION REPORT
TREE LOSS / IMPACT ASSESSMENT
FOR PEIR
OUTLINE TREE REMOVAL AND
IMPACT PLAN FOR PEIR**



Figure Number
FIGURE 1.1

Drawing Reference
808503-WOOD-0133

Scale	Sheet Size	Sheet	Issue
1:2,500	A3	SHEET 1 OF 4	1