

**INDICATIVE SPECIES LIST**

(All in accordance with Ecologists' approval/recommendation)

%	Species	Common Name	Stock	Age	Root
<b>TREE SPECIES</b>					
Standard trees					
8-10cm girth					
250-300cm					
10%	Acer campestre	Field Maple	60-80cm	1+1	B
10%	Alnus glutinosa	Common Alder			B
10%	Betula pendula	Silver Birch			B
10%	Carpinus betulus	Hornbeam			B
10%	Fagus sylvatica	Common Beech			B
10%	Prunus avium	Wild Cherry			B
10%	Prunus padus	Bird Cherry			B
10%	Tilia cordata	Small-leaved Lime			B
10%	Quercus robur	English Oak			B
10%	Sorbus aucuparia	Rowan			B

<b>WOODLAND MIX</b>					
1.5m staggered grid					
70% whips/transplants					
30% larger stock					
* to be planted at edge					
10%	Acer campestre	Field Maple	60-80cm	1+1	B
10%	Alnus glutinosa	Common Alder			B
10%	Betula pendula	Silver Birch			B
10%	Carpinus betulus	Hornbeam			B
3%	Cornus sanguinea	Common Dogwood	60-80cm	1+1	B
8%	Corylus avellana	Common Hazel	60-80cm	1+2	B
5%	Fagus sylvatica	Common Beech			RB
5%	Ilex aquifolium	Holly	60-80cm	3L	B
10%	Prunus avium	Silver Birch			B
10%	Quercus robur	English oak			RB
3%	Rosa canina	Dog-rose	60-80cm	1+1	B
5%	Sambucus nigra	Elder	40-60cm	1+1	B
8%	Sorbus aucuparia	Rowan	60-80cm	1+1	B
3%	Viburnum opulus	Guellder-rose	60-80cm	1+1	B

<b>SCRUB MIX</b>					
1m staggered grid					
Maintained at 3m height					
15%	Cornus sanguinea	Common Dogwood	60-80cm	1+1	B
10%	Corylus avellana	Common Hazel	60-80cm	1+2	B
15%	Euonymus europaeus	Spindle	40-60cm	1+1	B
15%	Ligustrum vulgare	Wild Privet	60-80cm	1+1	B
10%	Rhamnus cathartica	Buckthorn	60-80cm	1+2	B
10%	Rosa canina	Dog-rose	60-80cm	1+1	B
15%	Ulex europaeus	Common Gorse	60-80cm	1+2	B
10%	Viburnum opulus	Guellder-rose	60-80cm	1+1	B

<b>NATIVE HEDGE MIX</b>					
6no. per linear metre					
Double staggered row					
10%	Acer campestre	Field Maple	60-80cm	1+1	B
5%	Corylus avellana	Common Hazel	60-80cm	1+2	B
50%	Crataegus monogyna	Hawthorn	60-80cm	1+1	B
5%	Ligustrum vulgare	Wild Privet	60-80cm	1+1	B
20%	Prunus spinosa	Blackthorn	60-80cm	1+2	B
10%	Rosa canina	Dog-rose	60-80cm	1+1	B
10%	Viburnum lantana	Wayfaring Tree	60-80cm	1+2	B

**GRASS MIXES**

**WILDFLOWER AND GRASS SEED**

'Cotswolds Meadow Seed Mix' MGS grassland type  
 Supplied by: British Wildflower Seeds  
 Sow rate: 4g/m<sup>2</sup>

'Butterfly and Moth Seed Mix'  
 Supplied by: British Wildflower Seeds  
 Sow rate: 2g/m<sup>2</sup>

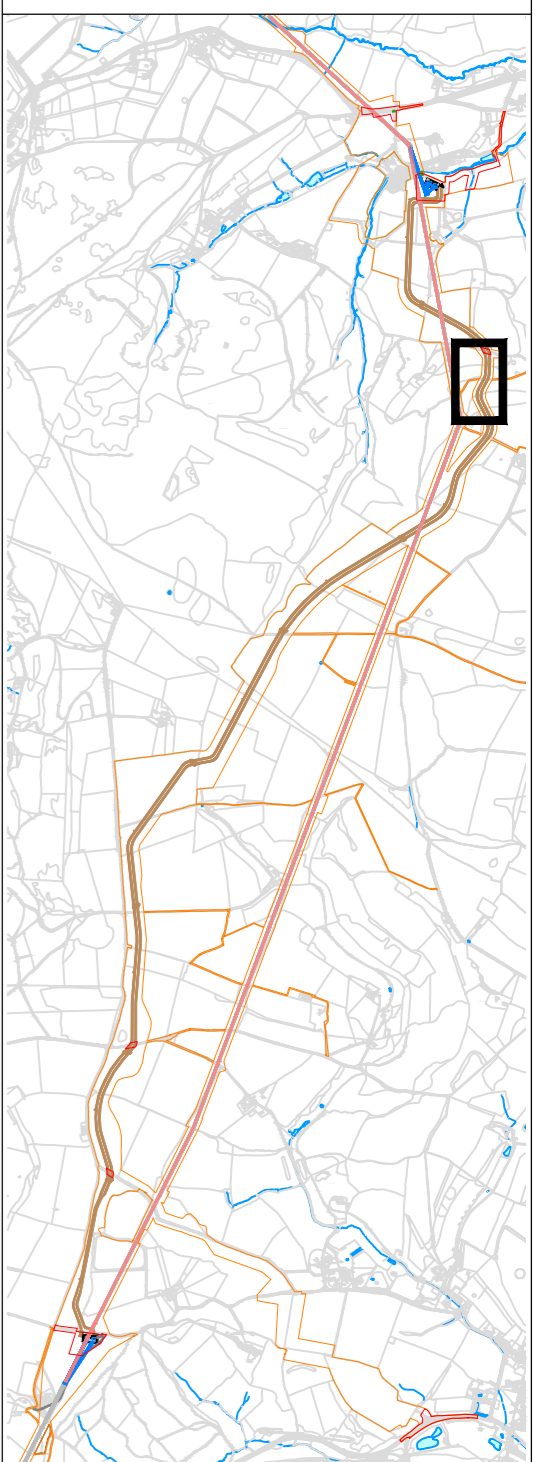
'EM6 Meadow Mixture for Chalk and Limestone Soils'  
 Supplied by: Emorsgate Seeds  
 Sow rate: 4g/m<sup>2</sup>

**UNDERSEEDING**

'EH1 Hedgerow Mixture'  
 Supplied by: Emorsgate Seeds  
 Sow rate: 4g/m<sup>2</sup>

'EW1 Woodland Mixture'  
 Supplied by: Emorsgate Seeds  
 Sow rate: 4g/m<sup>2</sup>

- GENERAL NOTES APPLY TO ALL SHEETS**
- Do not scale from this drawing.
  - This drawing is to be read in conjunction with all relevant drawings and documents.
  - No unauthorized disclosure, storage or copying.
  - This drawing is for indicative purposes only, not for construction.
  - For trees, woodland and hedgerow removal, retention and protection, refer to arboricultural drawings.
  - All land which will be disturbed by temporary construction works will be restored to its original use following completion of works.
  - Post and wire/mesh fencing or similar installed during the establishment period of planting where close to roads or public rights of way or where fields are grazed.



**LEGEND**

**EXISTING**

- Vegetation to be retained (Green outline)
- Vegetation to be removed (Red outline)
- Overhead Lines (OHL) to be removed (Red dashed line)

**PROPOSED**

- Cable Route to Engineer's detail (Red dashed line)
- Standard Trees (Green circle)
- Native Woodland Mix (Green grid)
- Native Scrub Mix (Yellow grid)
- Native Hedgerow (Green dashed line)
- Grass Mixes (Green grid)
- Planning Application Boundary (Red dashed line)
- Works Boundary (Orange line)

Rev	Date	Description	Dim	CHK	APP
P01	21.05.24	Updated Red Line		RG	HS
P02	14.05.24	Changes to red line and landscape proposals		RG	HS
P03	30.04.24	Final Planning Red Line Boundary		RG	HS
P04	24.04.24	Update to Landscape Proposals		RG	HS
P05	19.01.24	Design changes, additional pages to package		RG	HS
P02	20.12.23	Draft for review		RG	HS
P01	28.11.23	Draft issue		RG	HS

Scale 1:500  
 Do not scale from this drawing  
 All dimensions are to be verified on site  
 © Drawings & design copyright LUC

**LUC**  
 www.landuse.co.uk

Project  
 Cotswolds VIP Project

Client  
 National Grid

LUC Job Nr  
 12508

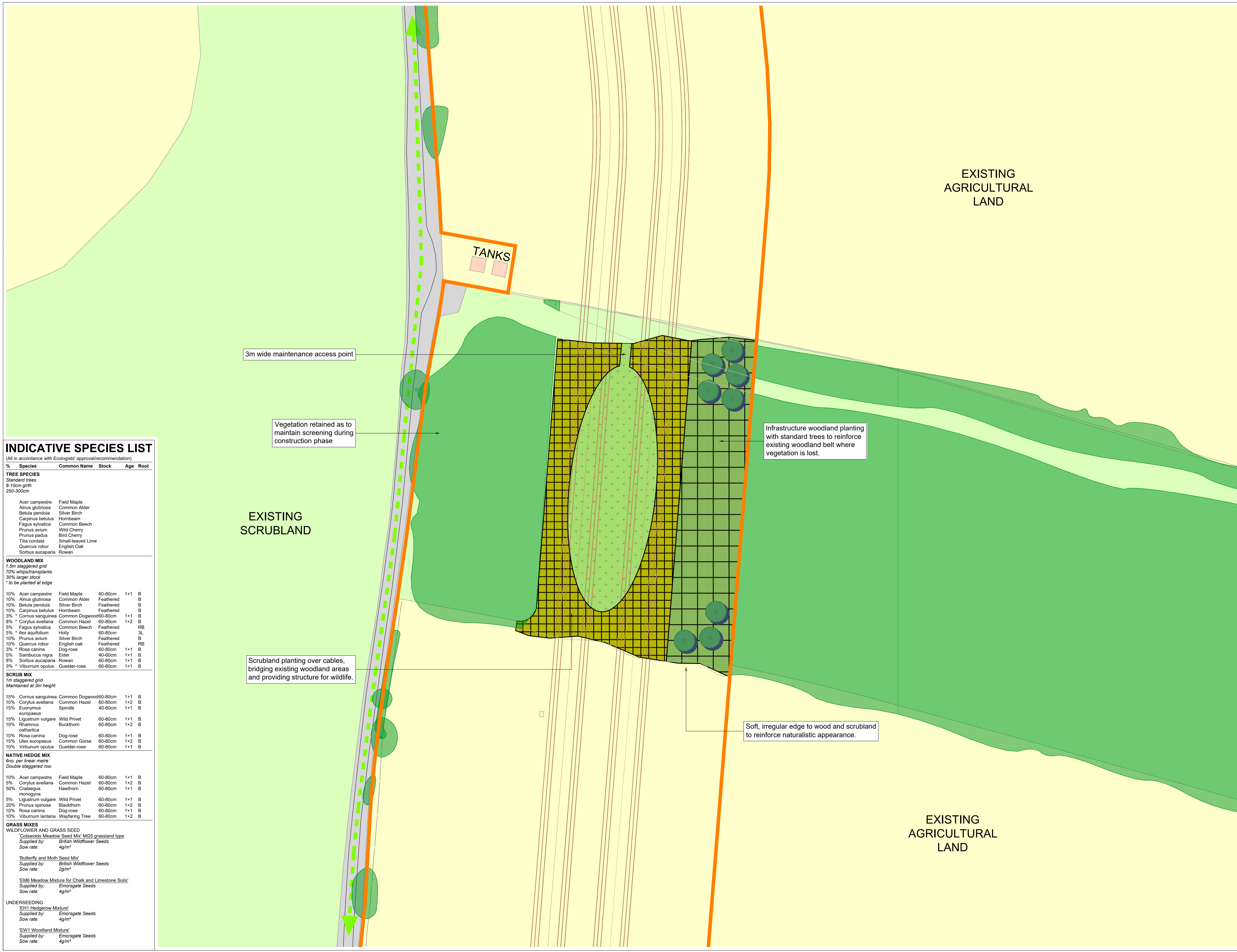
Scale @A1  
 1:500

Status  
 S0

Drawing Title  
 INDICATIVE LANDSCAPE PROPOSALS  
 Fig. 10; Breakheart Plantation

Drawing Nr  
 12508-LUC-XX-XX-DR-L-0003-S0

Rev  
 P07

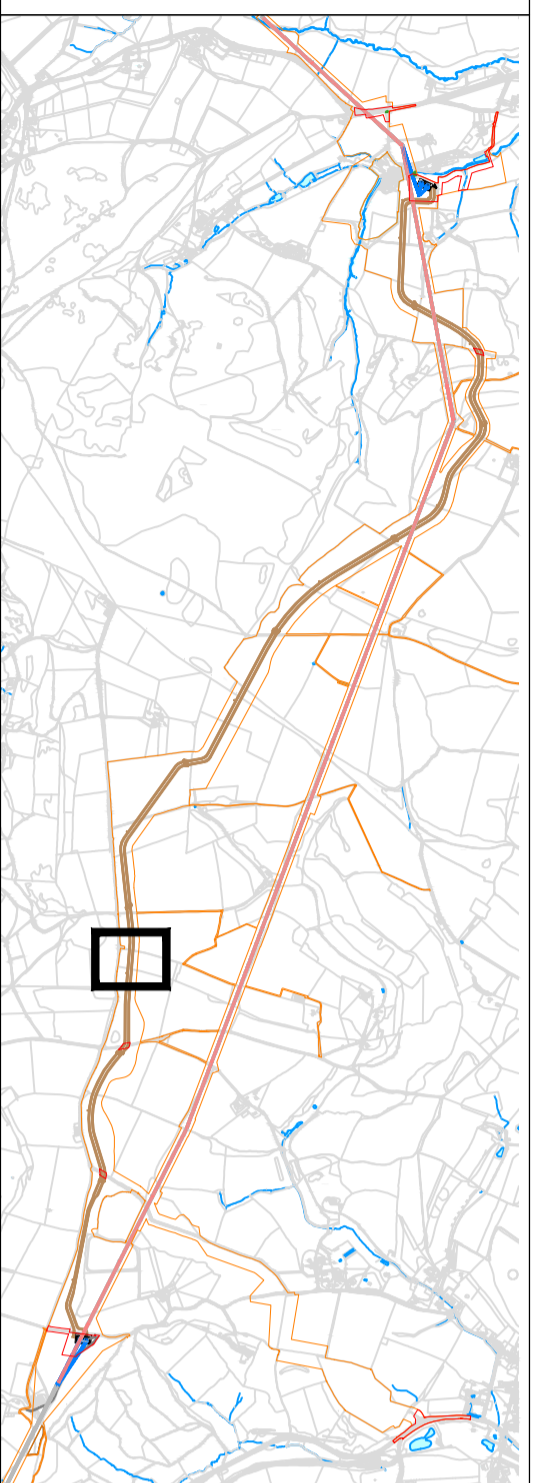


**INDICATIVE SPECIES LIST**

(All in accordance with Ecologists' approval/recommendation)

%	Species	Common Name	Stock	Age	Root
<b>TREE SPECIES</b>					
Standard trees					
8-10cm girth					
250-300cm					
10%	Acer campestre	Field Maple	60-80cm	1+1	B
10%	Alnus glutinosa	Common Alder	Feathered		B
10%	Betula pendula	Silver Birch	Feathered		B
10%	Carpinus betulus	Hornbeam	Feathered		B
3%	Fagus sylvatica	Common Beech	60-80cm	1+1	B
5%	Prunus avium	Wild Cherry	60-80cm	1+1	B
5%	Prunus padus	Bird Cherry	60-80cm	1+1	B
5%	Tilia cordata	Small-leaved Lime	60-80cm	1+1	B
5%	Quercus robur	English Oak	60-80cm	1+1	B
5%	Sorbus aucuparia	Rowan	60-80cm	1+1	B
<b>WOODLAND MIX</b>					
1.5m staggered grid					
70% whis/transplants					
30% larger stock					
* to be planted at edge					
10%	Acer campestre	Field Maple	60-80cm	1+1	B
10%	Alnus glutinosa	Common Alder	Feathered		B
10%	Betula pendula	Silver Birch	Feathered		B
10%	Carpinus betulus	Hornbeam	Feathered		B
3%	Cornus sanguinea	Common Dogwood	60-80cm	1+1	B
8%	* Corylus avellana	Common Hazel	60-80cm	1+2	B
5%	Fagus sylvatica	Common Beech	Feathered		RB
5%	Ilex aquifolium	Holly	60-80cm	3L	
10%	Prunus avium	Silver Birch	Feathered		B
10%	Quercus robur	English oak	Feathered		RB
3%	* Rosa canina	Dog-rose	60-80cm	1+1	B
5%	Sambucus nigra	Elder	40-60cm	1+1	B
8%	Sorbus aucuparia	Rowan	60-80cm	1+1	B
3%	* Viburnum opulus	Guelder-rose	60-80cm	1+1	B
<b>SCRUB MIX</b>					
1m staggered grid					
Maintained at 3m height					
15%	Cornus sanguinea	Common Dogwood	60-80cm	1+1	B
10%	Corylus avellana	Common Hazel	60-80cm	1+2	B
15%	Euonymus europaeus	Spindle	40-60cm	1+1	B
15%	Ligustrum vulgare	Wild Privet	60-80cm	1+1	B
10%	Rhamnus cathartica	Buckthorn	60-80cm	1+2	B
10%	Rosa canina	Dog-rose	60-80cm	1+1	B
15%	Ulex europaeus	Common Gorse	60-80cm	1+2	B
10%	Viburnum opulus	Guelder-rose	60-80cm	1+1	B
<b>NATIVE HEDGE MIX</b>					
6no. per linear metre					
Double staggered row					
10%	Acer campestre	Field Maple	60-80cm	1+1	B
5%	Corylus avellana	Common Hazel	60-80cm	1+2	B
50%	Crataegus monogyna	Hawthorn	60-80cm	1+1	B
5%	Ligustrum vulgare	Wild Privet	60-80cm	1+1	B
20%	Prunus spinosa	Blackthorn	60-80cm	1+2	B
10%	Rosa canina	Dog-rose	60-80cm	1+1	B
10%	Viburnum lantana	Wayfaring Tree	60-80cm	1+2	B
<b>GRASS MIXES</b>					
<b>WILDFLOWER AND GRASS SEED</b>					
'Cotswolds Meadow Seed Mix' MGS grassland type					
Supplied by: British Wildflower Seeds					
Sow rate: 4g/m <sup>2</sup>					
'Butterfly and Moth Seed Mix'					
Supplied by: British Wildflower Seeds					
Sow rate: 2g/m <sup>2</sup>					
'EM6 Meadow Mixture for Chalk and Limestone Soils'					
Supplied by: Emorsgate Seeds					
Sow rate: 4g/m <sup>2</sup>					
<b>UNDERSEEDING</b>					
'EH1 Hedgerow Mixture'					
Supplied by: Emorsgate Seeds					
Sow rate: 4g/m <sup>2</sup>					
'EW1 Woodland Mixture'					
Supplied by: Emorsgate Seeds					
Sow rate: 4g/m <sup>2</sup>					

- GENERAL NOTES APPLY TO ALL SHEETS**
- Do not scale from this drawing.
  - This drawing is to be read in conjunction with all relevant drawings and documents.
  - No unauthorized disclosure, storage or copying.
  - This drawing is for indicative purposes only, not for construction.
  - For tree, woodland and hedgerow removal, retention and protection, refer to arboricultural drawings.
  - All land which will be disturbed by temporary construction works will be restored to its original use following completion of works.
  - Post and wire/mesh fencing or similar installed during the establishment period of planting where close to roads or public rights of way or where fields are grazed.



**LEGEND**

**EXISTING**

- Vegetation to be retained
- Vegetation to be removed
- Restricted Byway

**PROPOSED**

- Cable Route
- Standard Trees
- Native Woodland Mix
- Native Scrub Mix
- Grass Mixes
- Works Boundary

Rev	Date	Description	Drn	CRN	App
P05	21.05.24	Updated Red Line			RG HS XX
P04	14.05.24	Changes to red line and landscape proposals			RG HS XX
P03	30.04.24	Final Planning Red Line Boundary			RG HS XX
P02	26.04.24	Update to Landscape Proposals			RG HS XX
P01	19.01.24	Landscape proposals added for Warrens Farm			RG HS XX

Scale 1:500  
 Do not scale from this drawing  
 All dimensions are to be verified on site  
 © Drawing & design copyright LUC

**LUC**  
 www.landuse.co.uk

Project  
 Cotswolds VIP Project

Client  
 National Grid

LUC Job Nr  
 12508

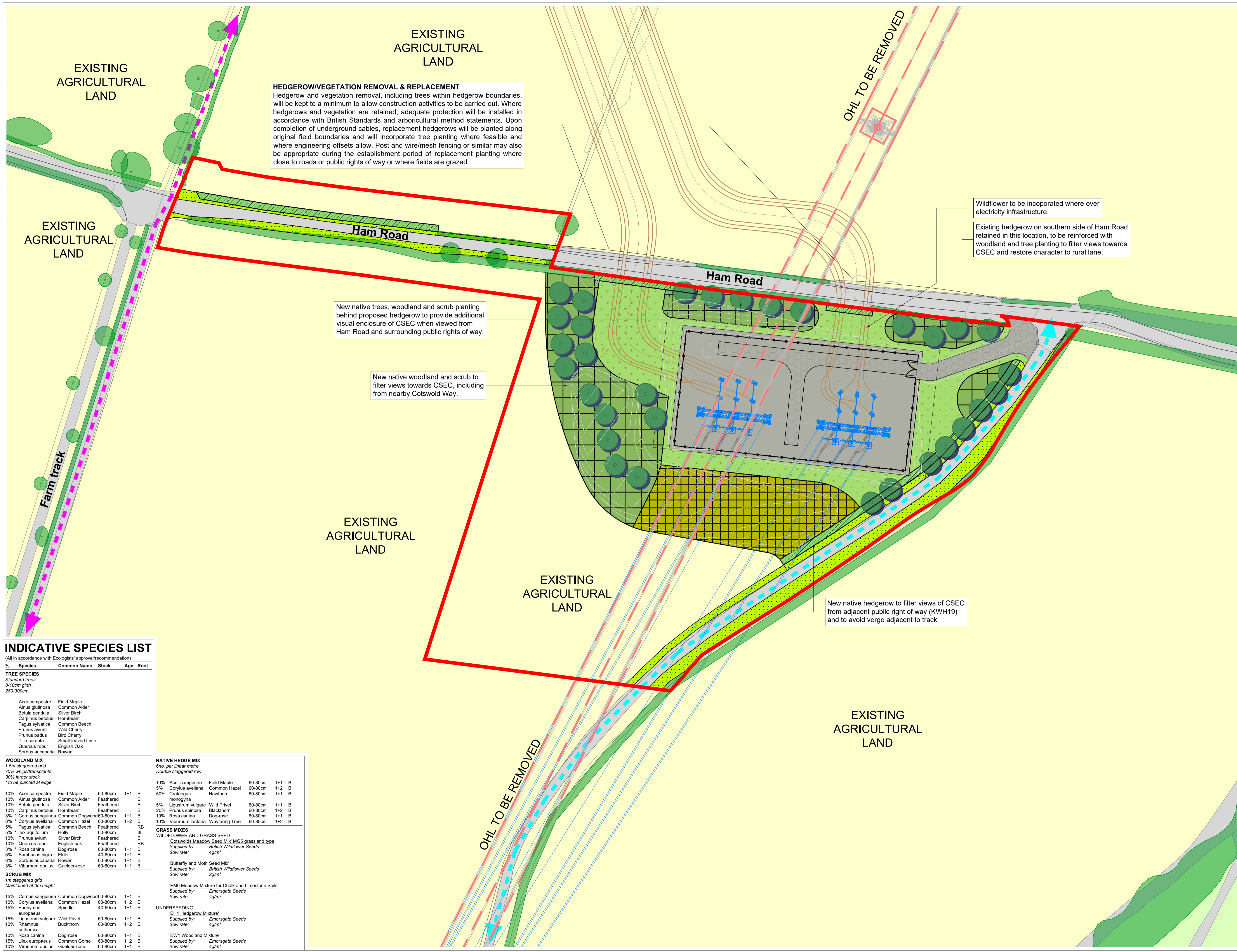
Scale @A1  
 1:500

Status  
 S0

Drawing Title  
 INDICATIVE LANDSCAPE PROPOSALS  
 Fig. 11; Warrens Farm Plantation

Drawing Nr  
 12508-LUC-XX-DR-L-0004-S0

Rev  
 P05



**HEDGEROW/VEGETATION REMOVAL & REPLACEMENT**  
 Hedgerow and vegetation removal, including trees within hedgerow boundaries, will be kept to a minimum to allow construction activities to be carried out. Where hedgerows and vegetation are retained, adequate protection will be installed in accordance with British Standards and arboricultural method statements. Upon completion of underground cables, replacement hedgerows will be planted along original field boundaries and will incorporate tree planting where feasible and where engineering offsets allow. Post and wire/mesh fencing or similar may also be appropriate during the establishment period of replacement planting where close to roads or public rights of way or where fields are grazed.

New native trees, woodland and scrub planting behind proposed hedgerow to provide additional visual enclosure of CSEC when viewed from Ham Road and surrounding public rights of way.

New native woodland and scrub to filter views towards CSEC, including from nearby Cotswold Way.

Wildflower to be incorporated where over electricity infrastructure.  
 Existing hedgerow on southern side of Ham Road retained in this location, to be reinforced with woodland and tree planting to filter views towards CSEC and restore character to rural lane.

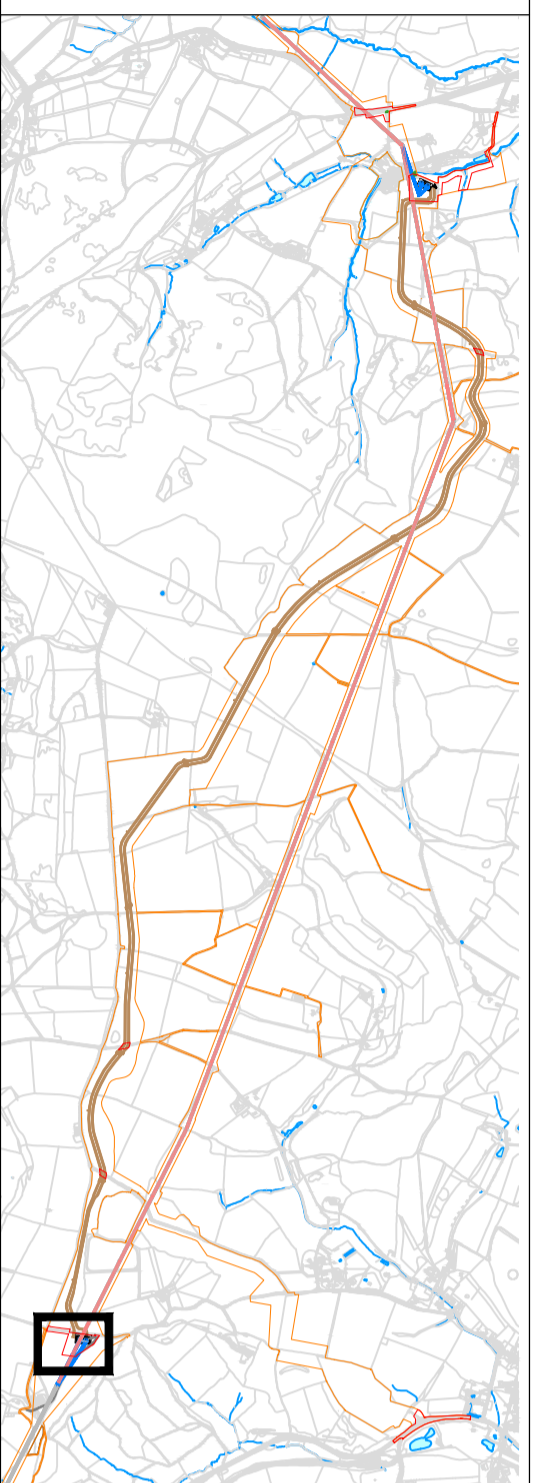
New native hedgerow to filter views of CSEC from adjacent public right of way (KWH19) and to avoid verge adjacent to track

**INDICATIVE SPECIES LIST**

(All in accordance with Ecologists' approval/recommendation)

%	Species	Common Name	Stock	Age	Root
<b>TREE SPECIES</b>					
Standard trees					
8-10cm girth					
250-300cm					
10%	Acer campestre	Field Maple	60-80cm	1+1	B
10%	Alnus glutinosa	Common Alder	60-80cm	1+2	B
10%	Betula pendula	Silver Birch	60-80cm	1+2	B
10%	Carpinus betulus	Hornbeam	60-80cm	1+1	B
10%	Fagus sylvatica	Common Beech	60-80cm	1+1	B
10%	Prunus avium	Wild Cherry	60-80cm	1+1	B
10%	Prunus padus	Bird Cherry	60-80cm	1+1	B
10%	Tilia cordata	Small-leaved Lime	60-80cm	1+1	B
10%	Quercus robur	English Oak	60-80cm	1+1	B
10%	Sorbus aucuparia	Rowan	60-80cm	1+1	B
<b>WOODLAND MIX</b>					
1.5m staggered grid					
70% whips/transplants					
30% larger stock					
* to be planted at edge					
10%	Acer campestre	Field Maple	60-80cm	1+1	B
10%	Alnus glutinosa	Common Alder	60-80cm	1+1	B
10%	Betula pendula	Silver Birch	60-80cm	1+1	B
10%	Carpinus betulus	Hornbeam	60-80cm	1+1	B
3%	Cornus sanguinea	Common Dogwood	60-80cm	1+1	B
8%	Corylus avellana	Common Hazel	60-80cm	1+2	B
5%	Fagus sylvatica	Common Beech	60-80cm	1+1	B
5%	Ilex aquifolium	Holly	60-80cm	1+1	B
10%	Prunus avium	Silver Birch	60-80cm	1+1	B
10%	Quercus robur	English oak	60-80cm	1+1	B
3%	Rosa canina	Dog-rose	60-80cm	1+1	B
5%	Sambucus nigra	Elder	40-60cm	1+1	B
8%	Sorbus aucuparia	Rowan	60-80cm	1+1	B
3%	Viburnum opulus	Guelder-rose	60-80cm	1+1	B
<b>SCRUB MIX</b>					
1m staggered grid					
Maintained at 3m height					
15%	Cornus sanguinea	Common Dogwood	60-80cm	1+1	B
10%	Corylus avellana	Common Hazel	60-80cm	1+2	B
15%	Euonymus europaeus	Spindle	40-60cm	1+1	B
15%	Ligustrum vulgare	Wild Privet	60-80cm	1+1	B
10%	Rhamnus cathartica	Buckthorn	60-80cm	1+2	B
10%	Rosa canina	Dog-rose	60-80cm	1+1	B
15%	Ulex europaeus	Common Gorse	60-80cm	1+2	B
10%	Viburnum opulus	Guelder-rose	60-80cm	1+1	B
<b>NATIVE HEDGE MIX</b>					
6no. per linear metre					
Double staggered row					
10%	Acer campestre	Field Maple	60-80cm	1+1	B
5%	Corylus avellana	Common Hazel	60-80cm	1+2	B
50%	Crataegus monogyna	Hawthorn	60-80cm	1+1	B
5%	Ligustrum vulgare	Wild Privet	60-80cm	1+1	B
20%	Prunus spinosa	Blackthorn	60-80cm	1+2	B
10%	Rosa canina	Dog-rose	60-80cm	1+1	B
10%	Viburnum lantana	Wayfaring Tree	60-80cm	1+2	B
<b>GRASS MIXES</b>					
<b>WILDFLOWER AND GRASS SEED</b>					
'Cotswolds Meadow Seed Mix' MGS grassland type					
Supplied by: British Wildflower Seeds					
Sow rate: 4g/m <sup>2</sup>					
'Butterfly and Moth Seed Mix'					
Supplied by: British Wildflower Seeds					
Sow rate: 2g/m <sup>2</sup>					
'EM6 Meadow Mixture for Chalk and Limestone Soils'					
Supplied by: Emorsgate Seeds					
Sow rate: 4g/m <sup>2</sup>					
<b>UNDERSEEDING</b>					
'EH1 Hedgerow Mixture'					
Supplied by: Emorsgate Seeds					
Sow rate: 4g/m <sup>2</sup>					
'EW1 Woodland Mixture'					
Supplied by: Emorsgate Seeds					
Sow rate: 4g/m <sup>2</sup>					

- GENERAL NOTES APPLY TO ALL SHEETS**
- Do not scale from this drawing.
  - This drawing is to be read in conjunction with all relevant drawings and documents.
  - No unauthorized disclosure, storage or copying.
  - This drawing is for indicative purposes only, not for construction.
  - For tree, woodland and hedgerow removal, retention and protection, refer to arboricultural drawings.
  - All land which will be disturbed by temporary construction works will be restored to its original use following completion of works.
  - Post and wire/mesh fencing or similar installed during the establishment period of planting where close to roads or public rights of way or where fields are grazed.



**LEGEND**

**EXISTING**

- Vegetation to be retained
- Vegetation to be removed
- Conservation Road Verge
- Overhead Lines (OHL) to be removed
- Cotswold Way National Trail (PROW)
- Public Rights of Way (PROW)

**PROPOSED**

- Cable Route
- Overhead / Above ground infrastructure
- Standard Trees
- Native Woodland Mix
- Native Scrub Mix
- Native Hedgerow
- Grass Mixes
- Landscape Bund
- Hard Landscape to CSEC
- Access Track
- Security Fence
- Planning Application Boundary

Rev	Date	Description	Dim	CHK	APP
P10	21.05.24	Updated Red Line, conservation verge added	RG	HS	XX
P09	14.02.24	Changes to red line and landscape proposals	RG	HS	XX
P08	03.05.24	Removal of temp. access track & temp. OHL	RG	HS	XX
P07	30.04.24	Final Planning Red Line Boundary	RG	HS	XX
P06	24.04.24	Updates to Landscape Proposals	RG	HS	XX
P05	20.02.24	Inclusion of tree impact and Protection Plan	RG	HS	XX
P04	14.02.24	Revisions removed	RG	HS	XX
P03	19.01.24	Design changes, additional pages to package	RG	HS	XX
P02	22.12.23	Client for review	RG	HS	XX
P01	22.11.23	Client issue	RG	HS	XX

Scale 1:500

Do not scale from this drawing. All dimensions are to be verified on site.

© Drawing & design copyright LUC

**LUC**  
www.landuse.co.uk

Project: Cotswolds VIP Project

Client: National Grid

LUC Job No: Scale @A1 Status: 12508 1:500 S0

Drawing Title: INDICATIVE LANDSCAPE PROPOSALS Fig. 12, Whittington CSEC

Drawing No: 12508-LUC-XX-DR-L-0002-S0 Rev: P10

# Appendix G

## Visualisations

© Crown copyright and database rights 2024. Ordnance Survey data. Licence number: 010031675. Contains public sector information licensed under the Open Government Licence v3.0. Aerial Imagery, Maxar, Microsoft



Baseline photograph

This image provides landscape and visual context only

© Crown copyright and database rights 2024. Ordnance Survey data. Licence number: 010031675. Contains public sector information licensed under the Open Government Licence v3.0. Aerial Imagery, Maxar, Microsoft



Photomontage showing Removal of existing Pylons and proposed Winchcombe CSEC

© Crown copyright and database rights 2024. Ordnance Survey data. Licence number: 010031675. Contains public sector information licensed under the Open Government Licence v3.0. Aerial Imagery, Maxar, Microsoft



Baseline photograph

This image provides landscape and visual context only

© Crown copyright and database rights 2024. Ordnance Survey data. Licence number: 010031675. Contains public sector information licensed under the Open Government Licence v3.0. Aerial Imagery, Maxar, Microsoft



Baseline photograph

This image provides landscape and visual context only