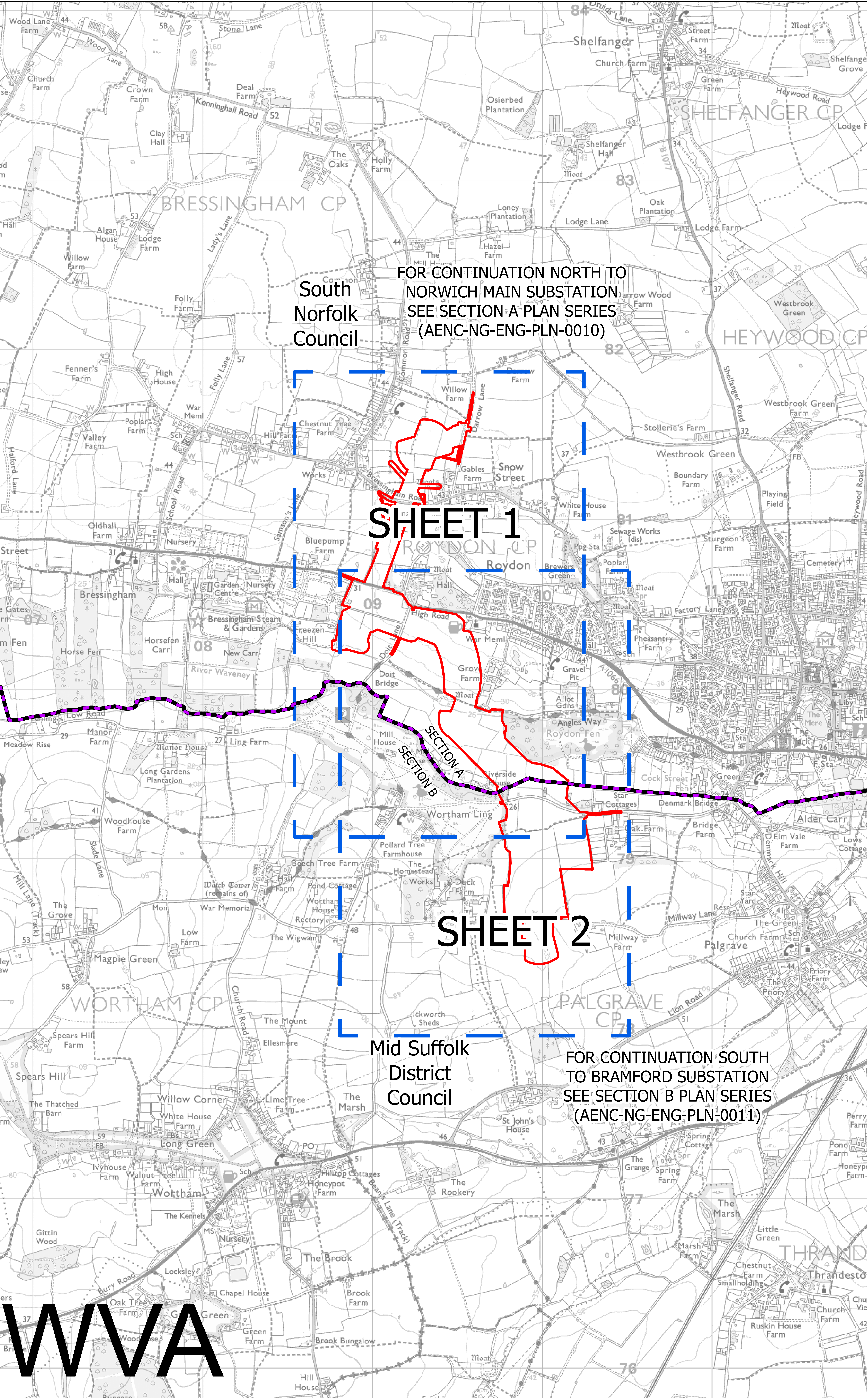
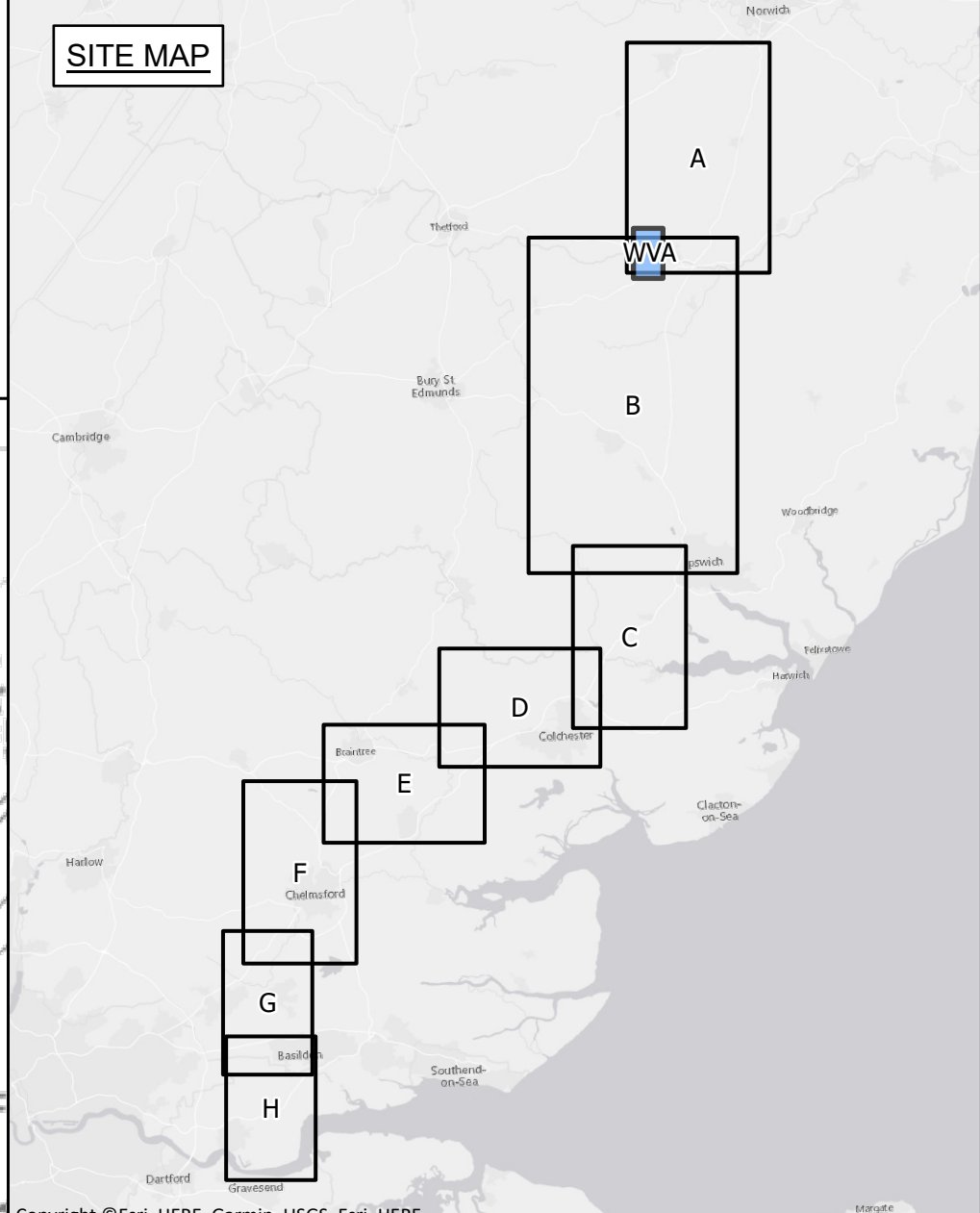


NATIONAL GRID
(NORWICH TO TILBURY)
ENVIRONMENTAL CONSTRAINTS WAVENEY VALLEY ALTERNATIVE KEY PLAN
SECTION WVA (SHEET 1 OF 1,
SOUTH NORFOLK COUNCIL AND MID SUFFOLK DISTRICT COUNCIL)



- Legend**
- Section boundary
 - - - Local authority boundary
 - Section boundary and local authority boundary
 - Sheet index
 - Proposed project design details**
 - Draft order limits

South
Norfolk
Council

FOR CONTINUATION NORTH TO
NORWICH MAIN SUBSTATION
SEE SECTION A PLAN SERIES
(AENC-NG-ENG-PLN-0010)

SHEET 1

SHEET 2

Mid Suffolk
District
Council

FOR CONTINUATION SOUTH
TO BRAMFORD SUBSTATION
SEE SECTION B PLAN SERIES
(AENC-NG-ENG-PLN-0011)

WVA

Notes

This drawing is scaled at paper size A0, therefore any prints taken at smaller sizes will affect accuracy of the measurement units and should not be scaled against.

These plans show the draft Order Limits. Due to the need for future flexibility, National Grid will be applying for Order Limits and Limits of Deviation within its Development Consent Order, within which any potential permanent infrastructure would lie. Further information is provided in our 'Guide to interacting with our consultation plans' document.

Coordinate System: British National Grid
Sheet X Centroid Coordinate: 609363 Sheet Y Centroid Coordinate: 279938

BACKGROUND MAPPING INFORMATION HAS BEEN REPRODUCED FROM THE ORDNANCE SURVEY BY PERMISSION OF ORDNANCE SURVEY OF THE CONTROLLER OF HIS MAJESTY'S STATIONERY OFFICE. © CROWN COPYRIGHT AND DATABASE RIGHTS (2024) LICENCE OS100024241 AND AC000087948.

Issue	Date	Remarks	Drawn	Checked	Approved
A	APRIL 2024	FOR STATUTORY CONSULTATION	JAL	AF	KB

Title

NATIONAL GRID
(NORWICH TO TILBURY)
ENVIRONMENTAL CONSTRAINTS
WAVENEY VALLEY ALTERNATIVE
KEY PLAN
SECTION WVA (SHEET 1 OF 1,
SOUTH NORFOLK COUNCIL AND
MID SUFFOLK DISTRICT COUNCIL)

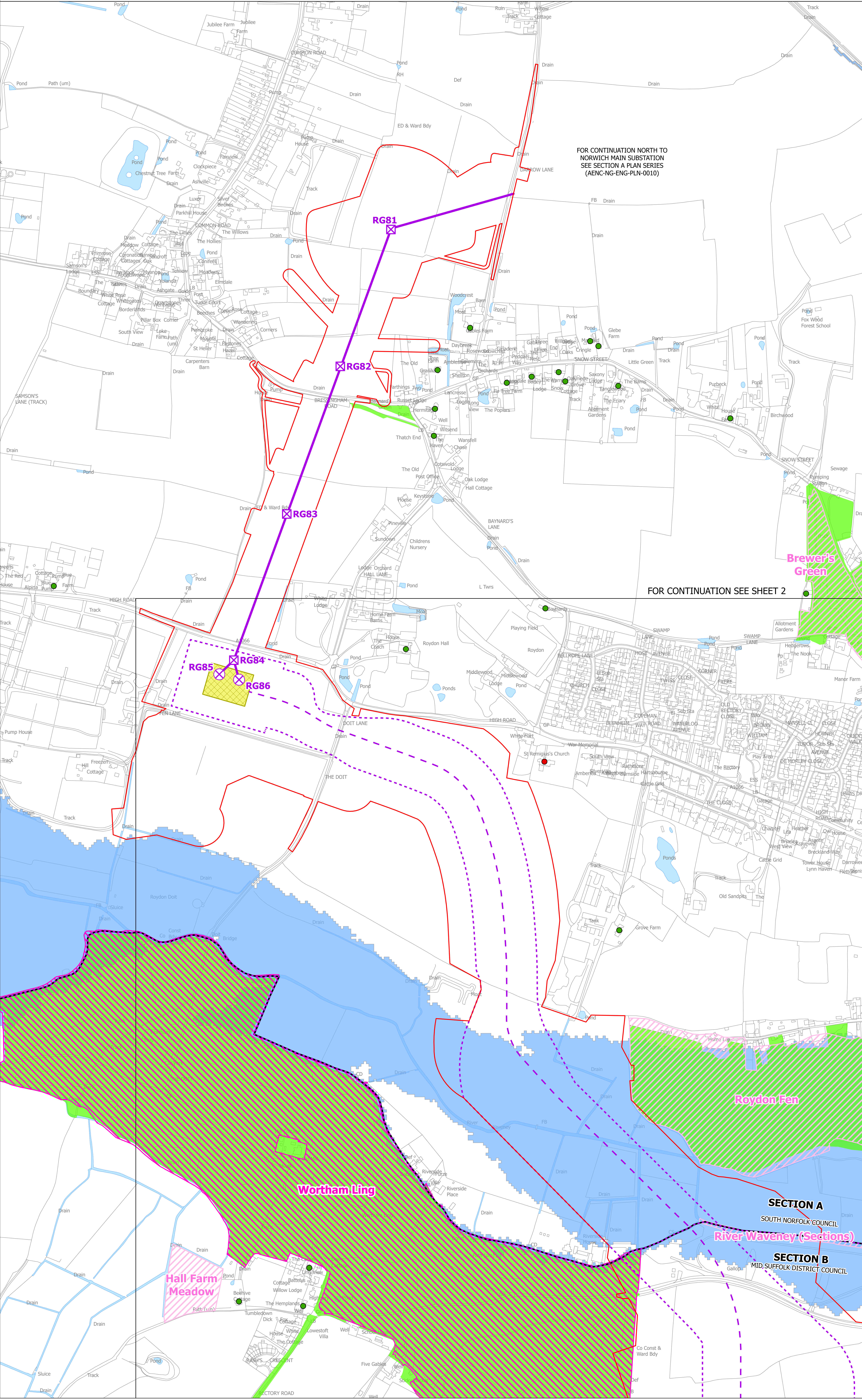
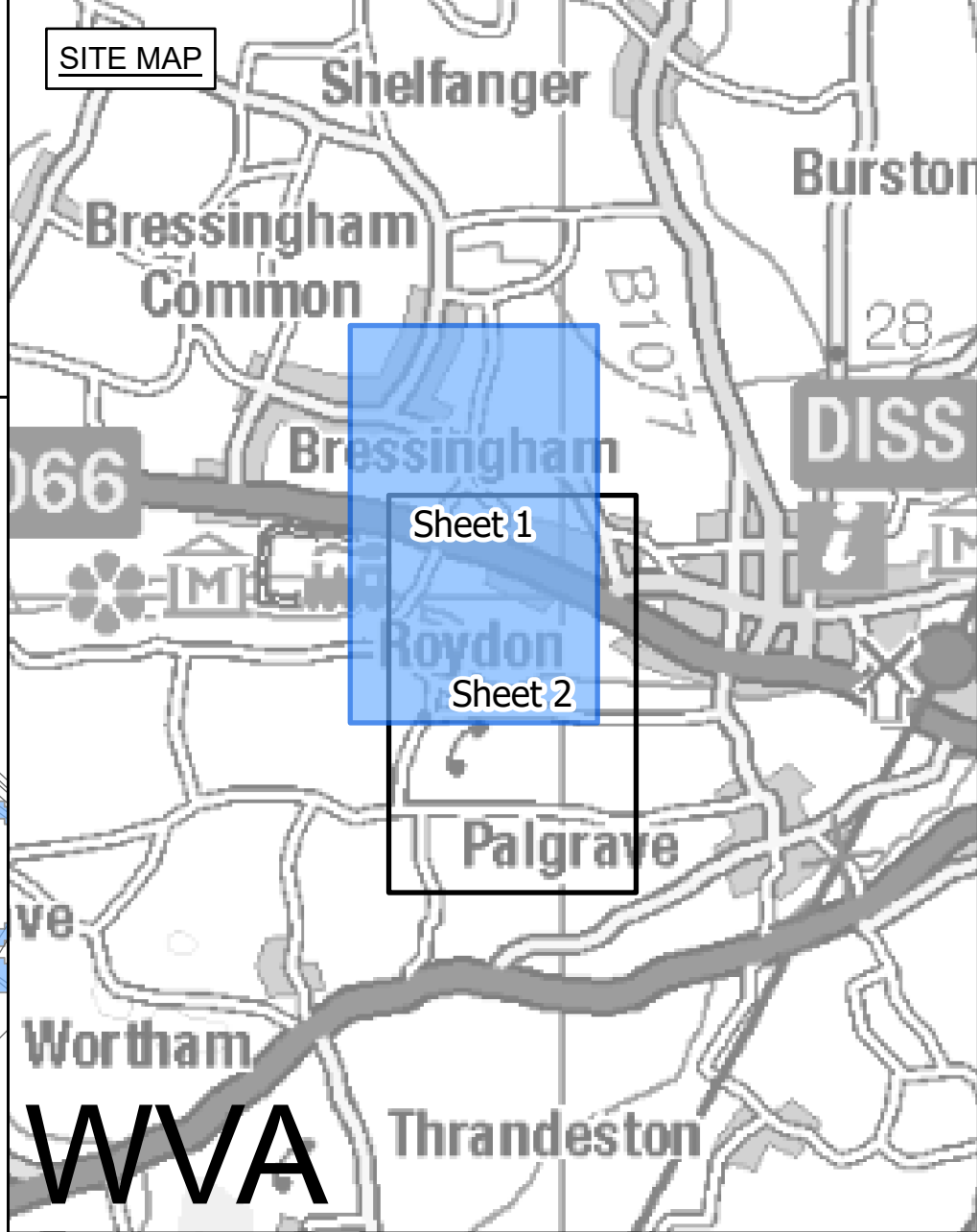
nationalgrid

National Grid Drawing Reference
AENC-JAC-ENV-PLN-0001

Scale	Sheet Size	Sheet	Issue
1:7,500	A0	SHEET 1 OF 1	A



NATIONAL GRID
(NORWICH TO TILBURY)
ENVIRONMENTAL CONSTRAINTS WAVENEY VALLEY ALTERNATIVE PLAN SERIES
SECTION WVA (SHEET 1 OF 2,
SOUTH NORFOLK COUNCIL AND MID SUFFOLK DISTRICT COUNCIL)



FOR CONTINUATION NORTH TO
NORWICH MAIN SUBSTATION
SEE SECTION A PLAN SERIES
(AENC-NG-ENG-PLN-0010)

FOR CONTINUATION SEE SHEET 2

- Legend**
- Local authority boundary
 - Section boundary and local authority boundary
 - Section boundary
 - Sheet index cutlines
- Proposed project design details**
- Draft order limits
 - New lattice pylon
 - New gantry
 - New full line tension gantry
 - New overhead line
 - New underground cable swathe centreline
 - New underground cable swathe
 - Cable sealing end compound boundary
- Environmental constraints**
- Listed buildings
- Grade I
 - Grade II
 - Grade II*
 - Scheduled monument (with accompanying list entry number)
 - Conservation areas
 - Countryside and Rights of Way Open Access Land
 - Special Areas of Conservation
 - Sites of Special Scientific Interest
 - Ancient woodland
 - County / local wildlife sites
 - Flood zone 3

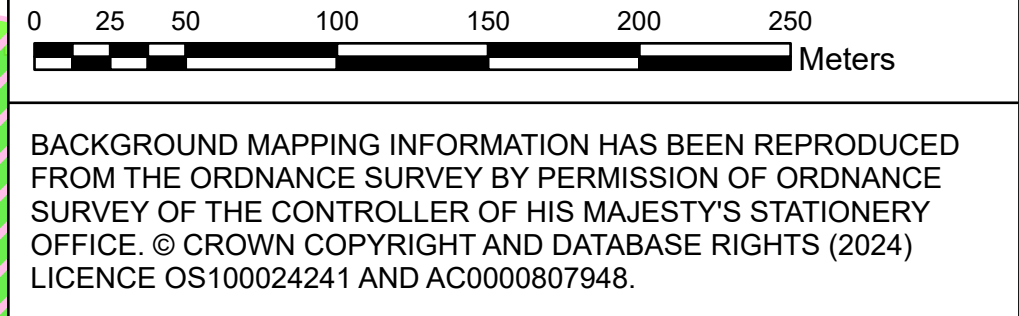
Notes

This drawing is scaled at paper size A0, therefore any prints taken at smaller sizes will affect accuracy of the measurement units and should not be scaled against.

The proposed overhead line alignment and proposed underground cable alignment together comprise the 2024 preferred draft alignment.

These plans show the draft Order Limits. Due to the need for future flexibility, National Grid will be applying for Order Limits and Limits of Deviation within its Development Consent Order, within which any potential permanent infrastructure would lie. Further information is provided in our 'Guide to interacting with our consultation plans' document.

Coordinates System: British National Grid
Sheet X Centroid Coordinate: 609393 Sheet Y Centroid Coordinate: 280500



BACKGROUND MAPPING INFORMATION HAS BEEN REPRODUCED FROM THE ORDNANCE SURVEY BY PERMISSION OF ORDNANCE SURVEY OF THE CONTROLLER OF HIS MAJESTY'S STATIONERY OFFICE. © CROWN COPYRIGHT AND DATABASE RIGHTS (2024) LICENCE OS100024241 AND AC0000807948.

Issue	Date	Remarks	Drawn	Checked	Approved
A	APRIL 2024	FOR STATUTORY CONSULTATION	JAL	AF	KB

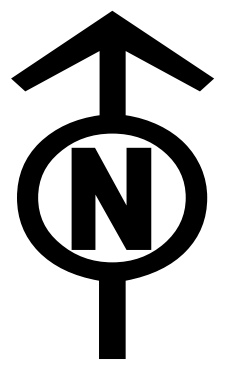
Title

NATIONAL GRID
(NORWICH TO TILBURY)
ENVIRONMENTAL CONSTRAINTS
WAVENEY VALLEY ALTERNATIVE
PLAN SERIES
SECTION WVA (SHEET 1 OF 2,
SOUTH NORFOLK COUNCIL AND
MID SUFFOLK DISTRICT COUNCIL)

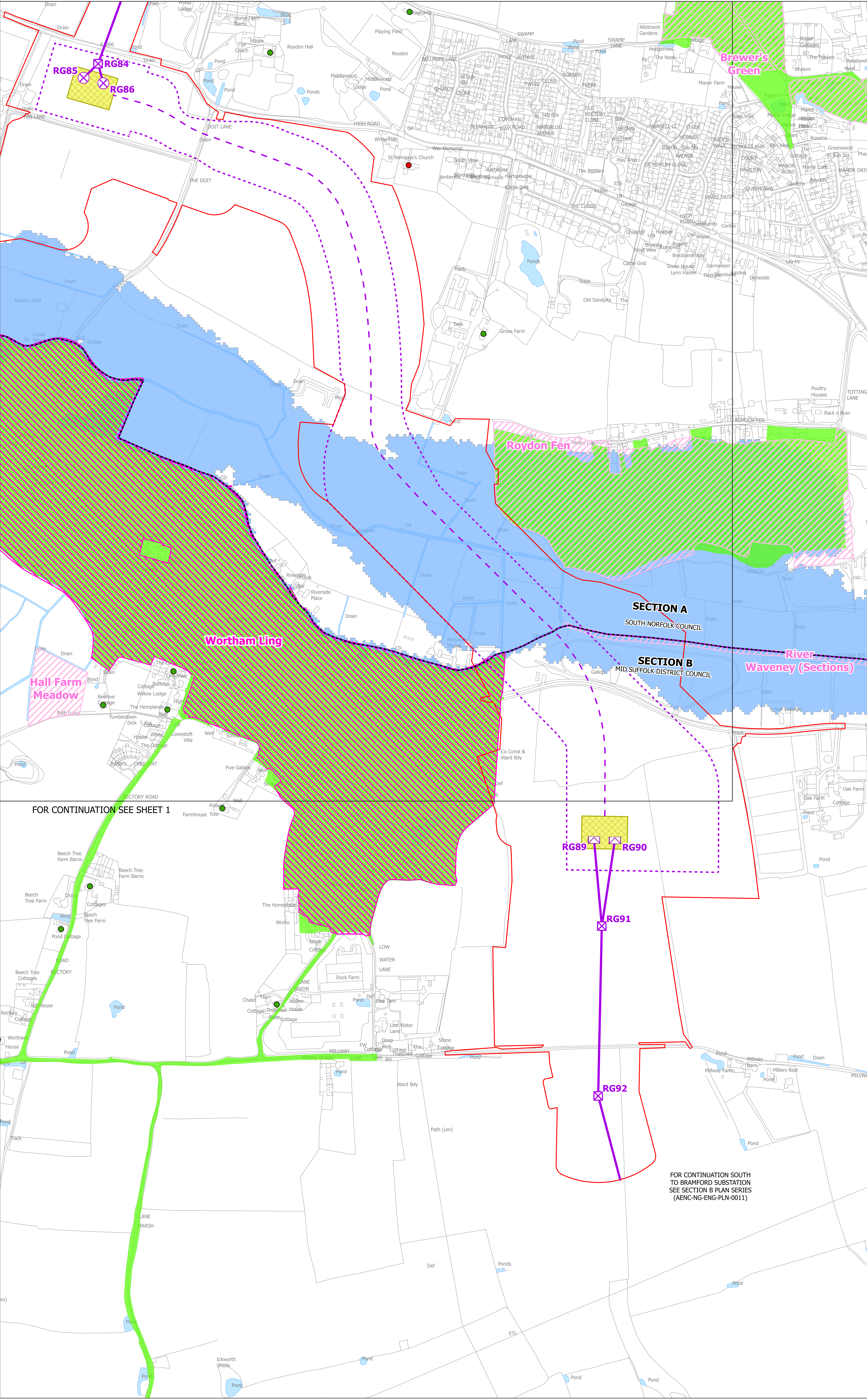
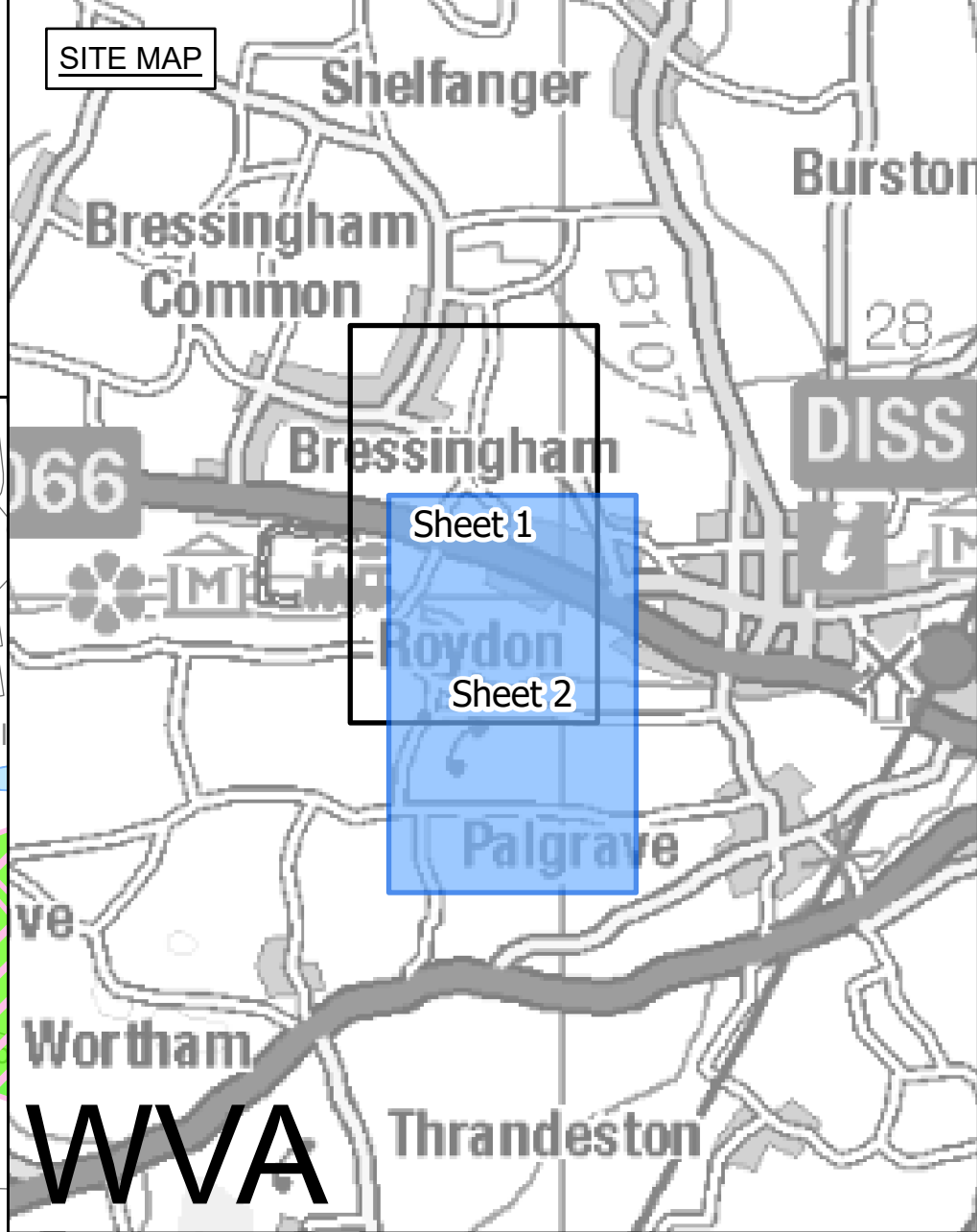
National Grid Drawing Reference

AENC-JAC-ENV-PLN-0001

Scale	Sheet Size	Sheet	Issue
1:2,500	A0	SHEET 1 OF 2	A



NATIONAL GRID
(NORWICH TO TILBURY)
ENVIRONMENTAL CONSTRAINTS WAVENEY VALLEY ALTERNATIVE PLAN SERIES
SECTION WVA (SHEET 2 OF 2,
SOUTH NORFOLK COUNCIL AND MID SUFFOLK DISTRICT COUNCIL)



- Legend**
- - - Local authority boundary
 - - - Section boundary and local authority boundary
 - - - Section boundary
 - - - Sheet index cutlines
- Proposed project design details**
- - - Draft order limits
 - ⊗ New lattice pylon
 - ⊗ New gantry
 - ⊗ New full line tension gantry
 - New overhead line
 - - - New underground cable swathe centreline
 - New underground cable swathe
 - ▨ Cable sealing end compound boundary
- Environmental constraints**
- Listed buildings
- Grade I
 - Grade II
 - Grade II*
 - ⊗ Scheduled monument (with accompanying list entry number)
 - ▨ Conservation areas
 - ▨ Countryside and Rights of Way Open Access Land
 - ▨ Special Areas of Conservation
 - ▨ Sites of Special Scientific Interest
 - ▨ Ancient woodland
 - ▨ County / local wildlife sites
 - ▨ Flood zone 3

FOR CONTINUATION SEE SHEET 1

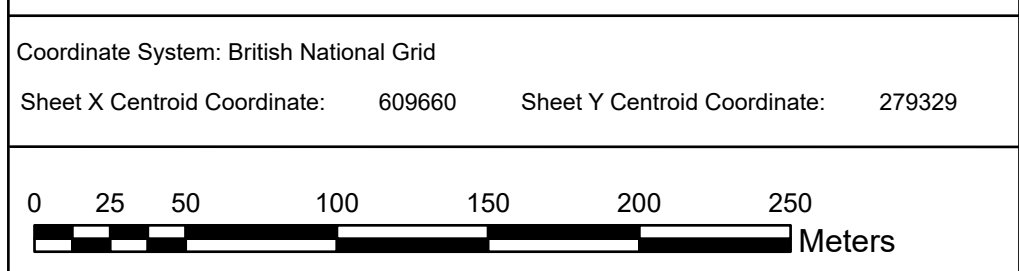
FOR CONTINUATION SOUTH TO BRAMFORD SUBSTATION SEE SECTION B PLAN SERIES (AENC-NG-ENG-PLN-0011)

Notes

This drawing is scaled at paper size A0, therefore any prints taken at smaller sizes will affect accuracy of the measurement units and should not be scaled against.

The proposed overhead line alignment and proposed underground cable alignment together comprise the 2024 preferred draft alignment.

These plans show the draft Order Limits. Due to the need for future flexibility, National Grid will be applying for Order Limits and Limits of Deviation within its Development Consent Order, within which any potential permanent infrastructure would lie. Further information is provided in our 'Guide to interacting with our consultation plans' document.



BACKGROUND MAPPING INFORMATION HAS BEEN REPRODUCED FROM THE ORDNANCE SURVEY BY PERMISSION OF ORDNANCE SURVEY OF THE CONTROLLER OF HIS MAJESTY'S STATIONERY OFFICE. © CROWN COPYRIGHT AND DATABASE RIGHTS (2024) LICENCE OS100024241 AND AC0000807948.

A	APRIL 2024	FOR STATUTORY CONSULTATION	JAL	AF	KB
Issue	Date	Remarks	Drawn	Checked	Approved

Title

NATIONAL GRID
(NORWICH TO TILBURY)
ENVIRONMENTAL CONSTRAINTS
WAVENEY VALLEY ALTERNATIVE
PLAN SERIES
SECTION WVA (SHEET 2 OF 2,
SOUTH NORFOLK COUNCIL AND
MID SUFFOLK DISTRICT COUNCIL)

National Grid Drawing Reference

AENC-JAC-ENV-PLN-0001

Scale	Sheet Size	Sheet	Issue
1:2,500	A0	SHEET 2 OF 2	A