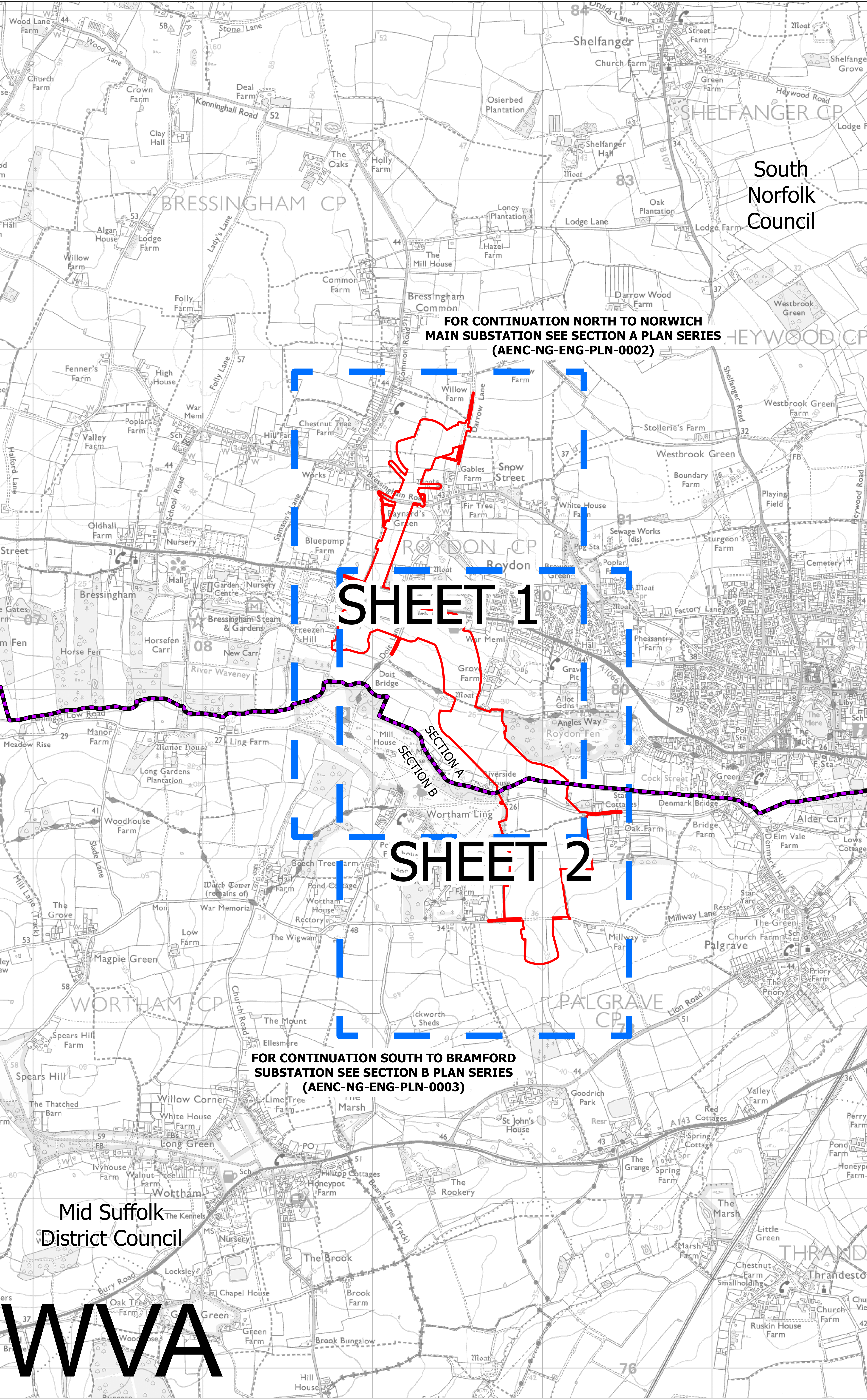
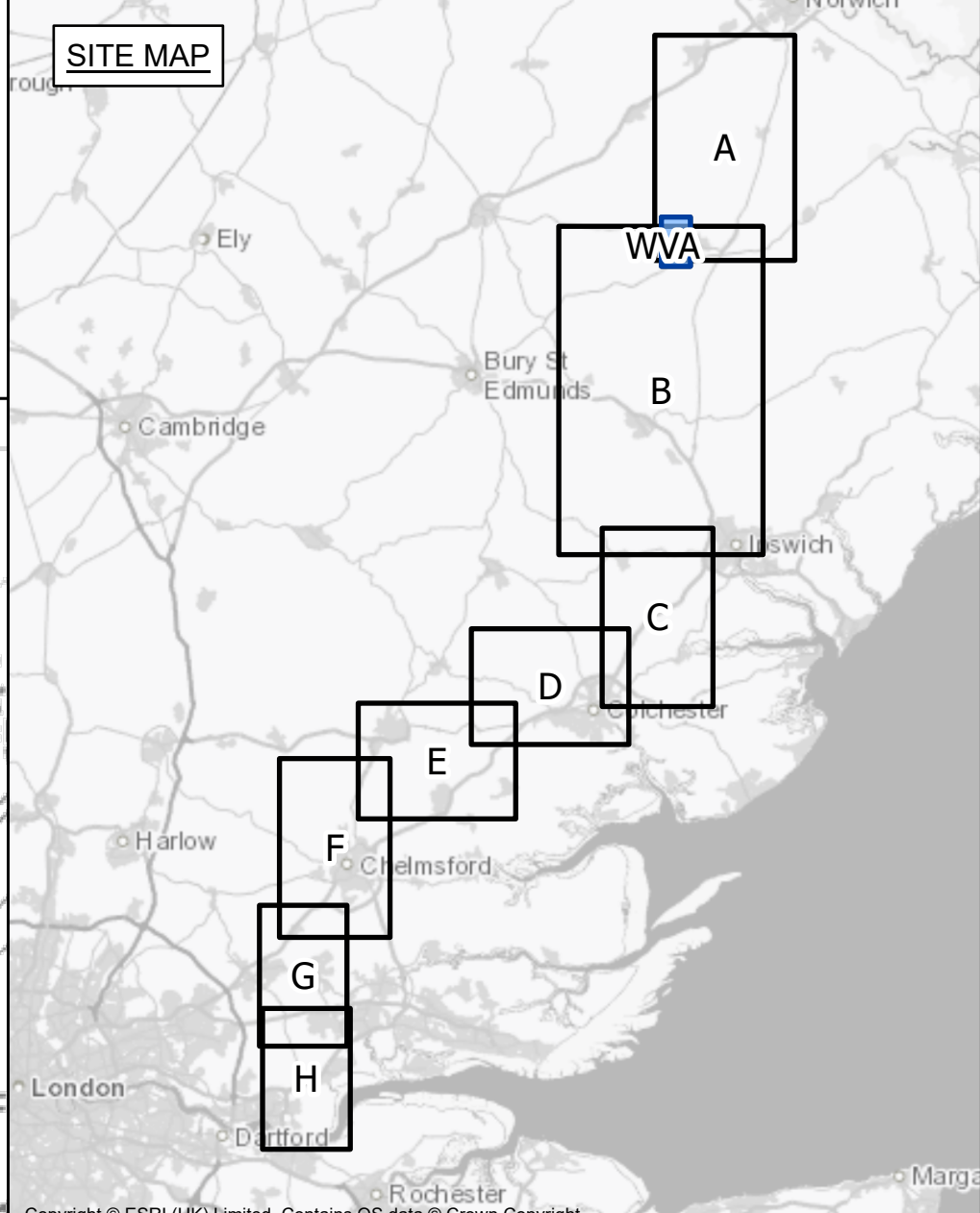


NATIONAL GRID  
(NORWICH TO TILBURY)  
S.42 CONSULTATION WAVENEY VALLEY ALTERNATIVE KEY PLAN  
SECTION WVA (SHEET 1 OF 1,  
SOUTH NORFOLK COUNCIL AND MID SUFFOLK DISTRICT COUNCIL)



- Legend**
- Section boundary and local authority boundary
  - Sheet index
  - Proposed project design details**
  - Draft order limits

FOR CONTINUATION NORTH TO NORWICH  
MAIN SUBSTATION SEE SECTION A PLAN SERIES  
(AENC-NG-ENG-PLN-0002)

**SHEET 1**

**SHEET 2**

FOR CONTINUATION SOUTH TO BRAMFORD  
SUBSTATION SEE SECTION B PLAN SERIES  
(AENC-NG-ENG-PLN-0003)

**Notes**

This drawing is scaled at paper size A0, therefore any prints taken at smaller sizes will affect accuracy of the measurement units and should not be scaled against.

These plans show the draft Order Limits. Due to the need for future flexibility, National Grid will be applying for Order Limits and Limits of Deviation within its Development Consent Order, within which any potential permanent infrastructure would lie. Further information is provided in our 'Guide to interacting with our consultation plans' document.

For information regarding the Primary Access Routes and the Highways Mitigation Draft Order Limits please refer to the 'Construction Access Plans'.

Coordinate System: British National Grid  
Sheet X Centroid Coordinate: 609363 Sheet Y Centroid Coordinate: 279938

0 100 200 400 600 800 Meters

BACKGROUND MAPPING INFORMATION HAS BEEN REPRODUCED FROM THE ORDNANCE SURVEY BY PERMISSION OF ORDNANCE SURVEY OF THE CONTROLLER OF HIS MAJESTY'S STATIONERY OFFICE. © CROWN COPYRIGHT AND DATABASE RIGHTS (2024) LICENCE OS100024241 AND AC000007948.

Issue	Date	Remarks	Drawn	Checked	Approved
A	APRIL 2024	FOR STATUTORY CONSULTATION	TH	MG	JPC

**Title**

NATIONAL GRID  
(NORWICH TO TILBURY)  
S.42 CONSULTATION WAVENEY VALLEY  
ALTERNATIVE KEY PLAN  
SECTION WVA (SHEET 1 OF 1,  
SOUTH NORFOLK COUNCIL AND  
MID SUFFOLK DISTRICT COUNCIL)

**nationalgrid**

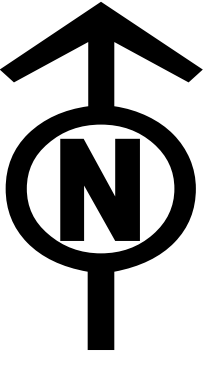
National Grid Drawing Reference  
AENC-NG-ENG-PLN-0021

Scale	Sheet Size	Sheet	Issue
1:7,500	A0	SHEET 1 OF 1	A

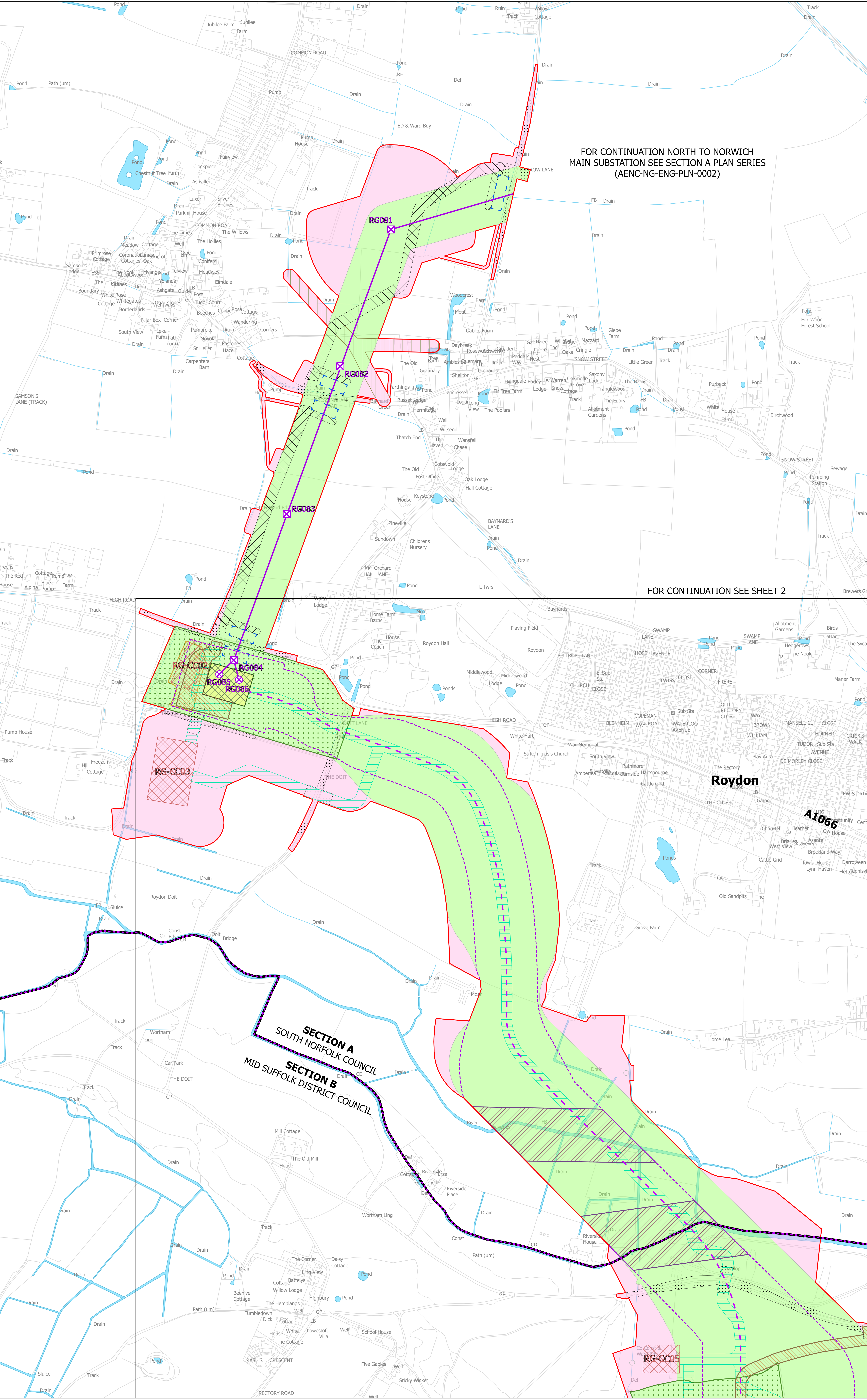
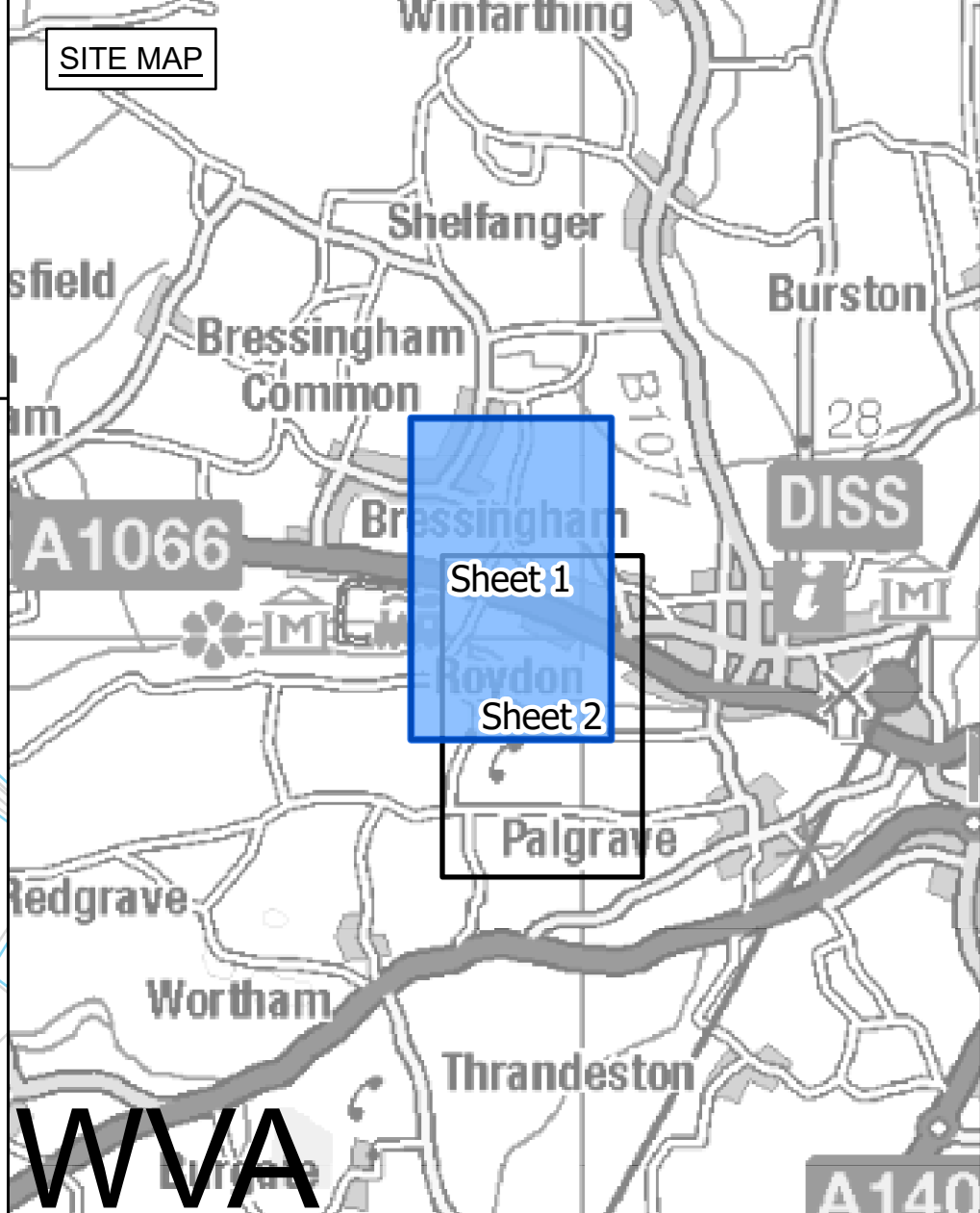
Mid Suffolk  
District Council

**WVA**





NATIONAL GRID  
(NORWICH TO TILBURY)  
S.42 CONSULTATION WAVENEY VALLEY ALTERNATIVE PLAN SERIES  
SECTION WVA (SHEET 1 OF 2,  
SOUTH NORFOLK COUNCIL AND MID SUFFOLK DISTRICT COUNCIL)



FOR CONTINUATION NORTH TO NORWICH  
MAIN SUBSTATION SEE SECTION A PLAN SERIES  
(AENC-NG-ENG-PLN-0002)

FOR CONTINUATION SEE SHEET 2

- Legend**
- Section boundary and local authority boundary
  - Sheet index cutlines
- Proposed land use**
- Draft order limits
  - Zone for permanent assets (NGET)
  - Zone for construction, operation and maintenance (NGET and statutory undertaker)
  - Statutory undertaker works
  - Environmental areas
- Proposed project design details**
- New lattice pylon
  - New gantry
  - New full line tension gantry
  - New overhead line
  - New underground cable swathe centreline
  - New underground cable construction swathe
  - New underground cable trenchless crossing
  - Cable sealing end compound boundary
  - Permanent access route including visibility splays (substations and cable sealing end compound)
- Temporary works**
- Site access, crossover points and visibility splays
  - Haul roads
  - Haul roads for underground cable, cable sealing end compounds and substation works
  - Crossing protection work area
  - Construction compound
  - Construction laydown area

**Notes**

This drawing is scaled at paper size A0, therefore any prints taken at smaller sizes will affect accuracy of the measurement units and should not be scaled against.

The proposed overhead line alignment and proposed underground cable alignment together comprise the 2024 preferred draft alignment.

These plans show the draft Order Limits. Due to the need for future flexibility, National Grid will be applying for Order Limits and Limits of Deviation within its Development Consent Order, within which any potential permanent infrastructure would lie. Further information is provided in our 'Guide to interacting with our consultation plans' document.

For information regarding the Primary Access Routes and the Highways Mitigation Draft Order Limits please refer to the 'Construction Access Plans'.

Coordinate System: British National Grid  
Sheet X Centroid Coordinate: 466393 Sheet Y Centroid Coordinate: 280500

BACKGROUND MAPPING INFORMATION HAS BEEN REPRODUCED FROM THE ORDNANCE SURVEY BY PERMISSION OF ORDNANCE SURVEY OF THE CONTROLLER OF HIS MAJESTY'S STATIONERY OFFICE. © CROWN COPYRIGHT AND DATABASE RIGHTS (2024) LICENCE OS100024241 AND AC000807948.

A	APRIL 2024	FOR STATUTORY CONSULTATION	TH	MG	JPC
Issue	Date	Remarks	Drawn	Checked	Approved

**Title**

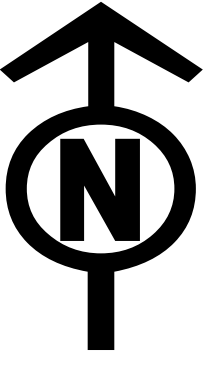
NATIONAL GRID  
(NORWICH TO TILBURY)  
S.42 CONSULTATION WAVENEY VALLEY  
ALTERNATIVE PLAN SERIES  
SECTION WVA (SHEET 1 OF 2,  
SOUTH NORFOLK COUNCIL AND  
MID SUFFOLK DISTRICT COUNCIL)

**nationalgrid**

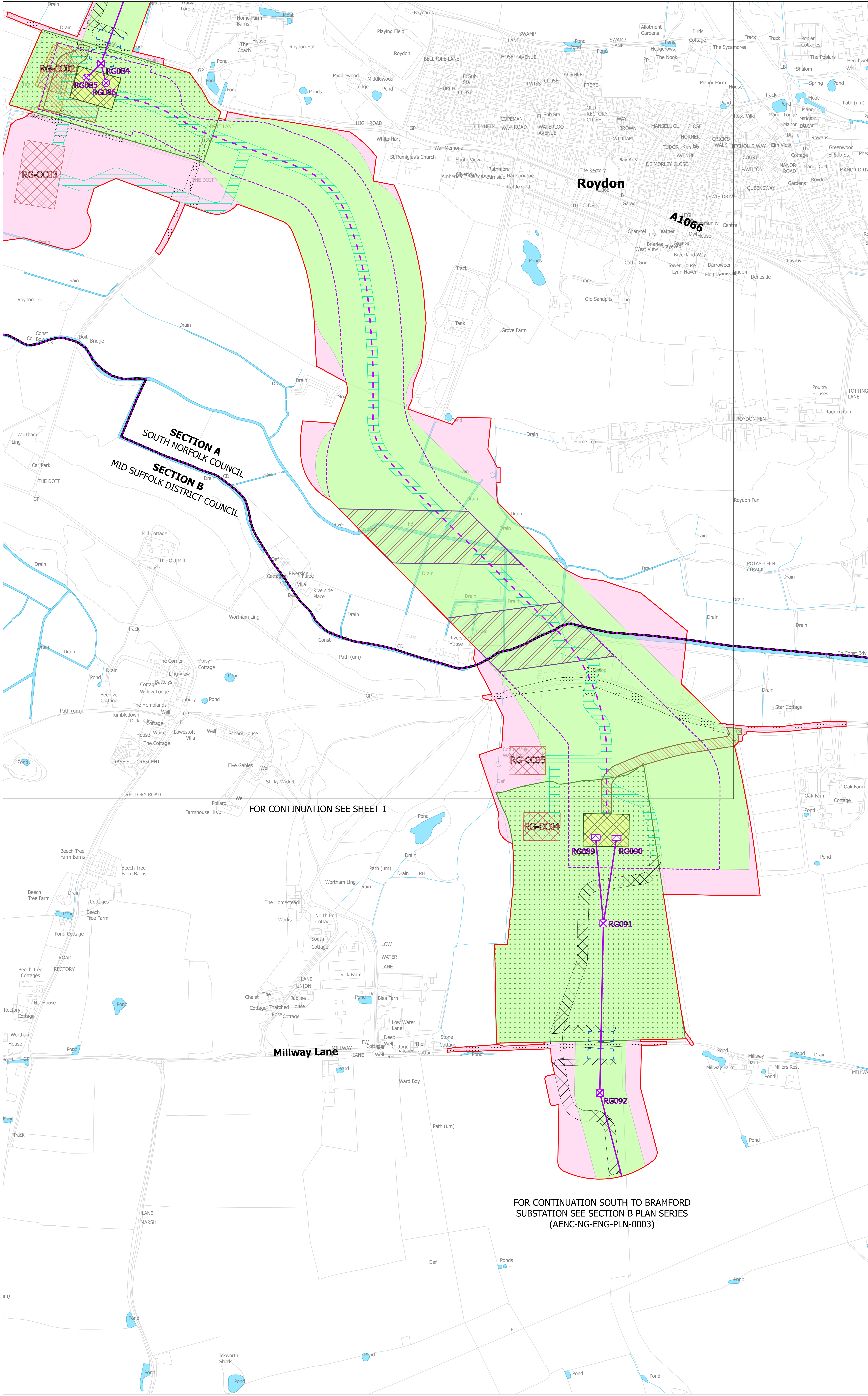
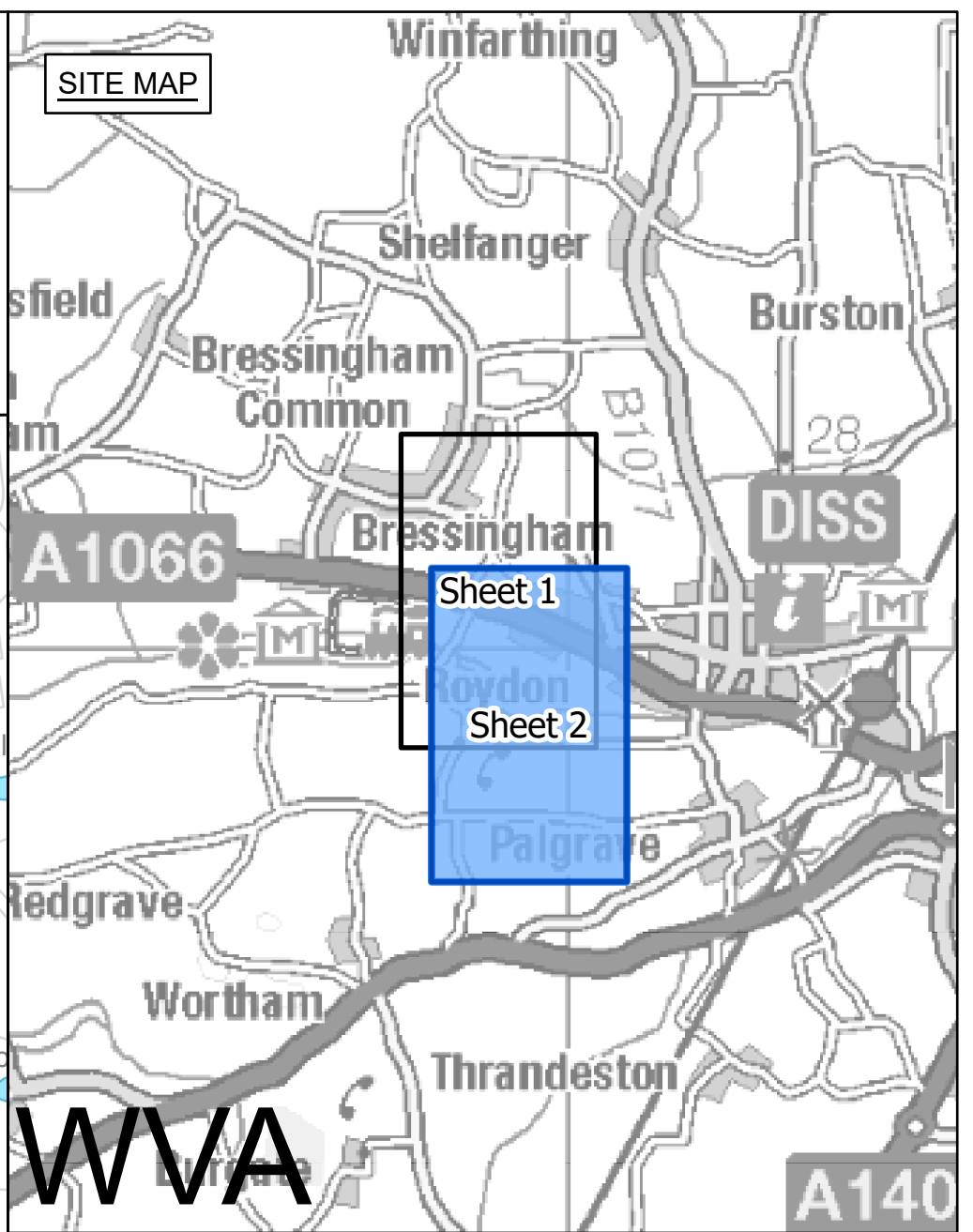
National Grid Drawing Reference  
AENC-NG-ENG-PLN-0021

Scale	Sheet Size	Sheet	Issue
1:2,500	A0	SHEET 1 OF 2	A





NATIONAL GRID  
(NORWICH TO TILBURY)  
S.42 CONSULTATION WAVENEY VALLEY ALTERNATIVE PLAN SERIES  
SECTION WVA (SHEET 2 OF 2,  
SOUTH NORFOLK COUNCIL AND MID SUFFOLK DISTRICT COUNCIL)



- Legend**
- Section boundary and local authority boundary
  - Sheet index cutlines
- Proposed land use**
- Draft order limits
  - Zone for permanent assets (NGET)
  - Zone for construction, operation and maintenance (NGET and statutory undertaker)
  - Statutory undertaker works
  - Environmental areas
- Proposed project design details**
- New lattice pylon
  - New gantry
  - New full line tension gantry
  - New overhead line
  - New underground cable swathe centreline
  - New underground cable construction swathe
  - New underground cable trenchless crossing
  - Cable sealing end compound boundary
  - Permanent access route including visibility splays (substations and cable sealing end compound)
- Temporary works**
- Site access, crossover points and visibility splays
  - Haul roads
  - Haul roads for underground cable, cable sealing end compounds and substation works
  - Crossing protection work area
  - Construction compound
  - Construction laydown area

FOR CONTINUATION SEE SHEET 1

FOR CONTINUATION SOUTH TO BRAMFORD  
SUBSTATION SEE SECTION B PLAN SERIES  
(AENC-NG-ENG-PLN-0003)

**Notes**

This drawing is scaled at paper size A0, therefore any prints taken at smaller sizes will affect accuracy of the measurement units and should not be scaled against.

The proposed overhead line alignment and proposed underground cable alignment together comprise the 2024 preferred draft alignment.

These plans show the draft Order Limits. Due to the need for future flexibility, National Grid will be applying for Order Limits and Limits of Deviation within its Development Consent Order, within which any potential permanent infrastructure would lie. Further information is provided in our 'Guide to interacting with our consultation plans' document.

For information regarding the Primary Access Routes and the Highways Mitigation Draft Order Limits please refer to the 'Construction Access Plans'.

Coordinate System: British National Grid  
Sheet X Centroid Coordinate: 469860 Sheet Y Centroid Coordinate: 279229

0 25 50 100 150 200 250 Meters

BACKGROUND MAPPING INFORMATION HAS BEEN REPRODUCED FROM THE ORDNANCE SURVEY BY PERMISSION OF ORDNANCE SURVEY OF THE CONTROLLER OF HIS MAJESTY'S STATIONERY OFFICE. © CROWN COPYRIGHT AND DATABASE RIGHTS (2024) LICENCE OS100024241 AND AC000087948.

Issue	Date	Remarks	Drawn	Checked	Approved
A	APRIL 2024	FOR STATUTORY CONSULTATION	TH	MG	JPC

**Title**

NATIONAL GRID  
(NORWICH TO TILBURY)  
S.42 CONSULTATION WAVENEY VALLEY  
ALTERNATIVE PLAN SERIES  
SECTION WVA (SHEET 2 OF 2,  
SOUTH NORFOLK COUNCIL AND  
MID SUFFOLK DISTRICT COUNCIL)

**National Grid Drawing Reference**

AENC-NG-ENG-PLN-0021

Scale	Sheet Size	Sheet	Issue
1:2,500	A0	SHEET 2 OF 2	A