

Consulting on our early-stage proposals

January 2024



Our proposals



Our public consultation



How to find out more



The way we generate electricity in the UK is changing rapidly, and we are transitioning to cheaper, cleaner and more secure forms of energy such as new offshore windfarms.

We need to make changes to the network of overhead lines, pylons, cables and other infrastructure that transports electricity around the country, so that everyone has access to clean electricity from these new renewable sources.

National Grid Electricity Transmission (NGET) is consulting on proposals for upgrading the electricity network between Grimsby and Walpole.

Our proposals are part of The Great Grid Upgrade – the largest overhaul of the grid in generations.

Our existing power lines do not have sufficient capacity for all the new sources of electricity that we expect to connect to the network over the next 10 years and beyond. The north and east of England and the Midlands are at the heart of a modern electricity network and an improved network is critical to carrying more clean green energy and increasing our energy security.

Our plans include building approximately 140 kilometres (km) of new 400 kilovolt (kV) overhead electricity transmission line between two new 400 kV substations at Grimsby West and Walpole, together with three new connection substations in Lincolnshire for planned new offshore wind generation, battery storage/ solar, interconnectors with other countries and subsea links to Scotland.

This upgrade is needed to facilitate the connection of new renewable generation and interconnectors that are planned in the area, and to increase the capability of the electricity transmission network between the north of England and the Midlands.

Stage 1 public consultation – January to March 2024

Consultation plays an important part in developing our proposals. We are sharing our proposals at this early stage so that your feedback can help to shape our plans as they evolve. Between **18 January 2024 and 13 March 2024** we are holding the first stage of public consultation on our early proposals.

It is important that we hear the views of local people. Knowing what matters to you, matters to us. This consultation is an opportunity for you to comment on our early-stage plans for this upgrade before we refine our proposals further. Your views during this consultation will help inform our more detailed proposals, which we will be presenting and consulting on during a further consultation in 2025.

This newsletter provides a high-level summary of our plans, as well as details of how you can get involved in our engagement activities and where further information can be found.

National Grid Electricity Transmission is working to build a cleaner, fairer and more affordable energy system that serves everyone, powering the future of our homes, transport and industry.

NGET owns, builds and maintains the electricity transmission network in England and Wales. It is NGET that is developing proposals for the Grimsby to Walpole upgrade.

The new overhead line would be routed between a new substation located in the vicinity of the existing Grimsby West substation and a new substation in the Walpole area, along with three further new substations along the route.

New pylons and conductors (electrical wires) would be located along the route of the proposed new overhead line. At this early stage of the project, we have not decided exactly what type of pylon we will use. This will be considered in more detail as we develop our proposals further. As a starting position, we are considering the use of traditional 400 kV lattice steel pylons, which are typically 50 metres in height, with approximately three pylons located per kilometre on a straight section of the route, slightly more in places.

We have carried out engineering, environmental and socio-economic assessments to identify an emerging preferred corridor, within which the new reinforcement could be located.

We have considered aspects such as residential properties, existing overhead lines and sensitive features from a biodiversity and ecology, historical, environment and heritage, and landscape and visual impact perspective.

We then considered where it might be more, or less, appropriate to site the new overhead line and substations within the emerging preferred corridor and substation search areas, looking at similar factors. The outcome of this early-stage work is shown by a blue shaded 'graduated swathe'. This indicates where we currently believe the proposed transmission line and substations might best be located. Darker blue areas of shading represent where it may be more likely to locate the new assets. Lighter blue, or unshaded areas, represent where we believe it would be less likely.

The new overhead line needs to be operational as close as possible to 2030 to meet Government targets for offshore wind.

We are asking for your feedback on our work to date to identify an emerging preferred corridor and graduated swathe within which the proposed new line and substations could be located.

Our proposals for public consultation

Our emerging preferred corridor is split into 11 sections to make it easier for people to give feedback about particular areas. Our consultation materials summarise each section in more detail and the reasons for routing our emerging preferred corridor and graduated swathe. We welcome your feedback on all aspects of our plans, including the areas of interest to you.

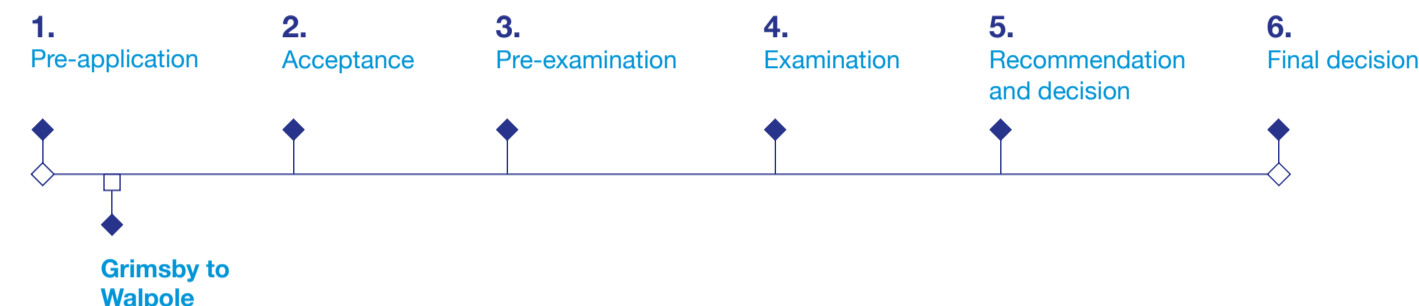
You can use our interactive map online to focus in on areas of interest, including each section of the project. This map also links through to more technical plans (referred to as 'section plans') for each of the 11 sections, including more detailed plans at a local level. Please get in touch with us if you require assistance with navigating our plans.

The emerging preferred corridor, substation siting areas and graduated swathe are shown on the opposite side of this newsletter.

Grimsby to Walpole is classified as a nationally significant infrastructure project under the Planning Act 2008.

We will need to submit an application for a Development Consent Order (DCO) to the Planning Inspectorate. After considering the DCO application, the Planning Inspectorate will make a recommendation to the Secretary of State for Energy Security and Net Zero. The minister will then decide whether development consent should be granted for the project.

DCO timeline process



We want to ensure that all stakeholders are engaged in the development of our proposals and have the opportunity to comment on the proposals at key decision-making points. We want to hear your thoughts on our proposals and your feedback will be carefully considered as we develop our plans further.



Feedback from this consultation, along with technical work and our ongoing environmental assessment, will help to shape our plans. We will share our updated proposals at a second stage of consultation planned for 2025, where we will explain in an interim report how feedback from this first stage of consultation has shaped our plans and outline the key themes in the feedback from this first stage.

Following this, we will finalise our proposals and offer all feedback and our responses to your comments in a Consultation Report, which will be submitted with our application for development consent.

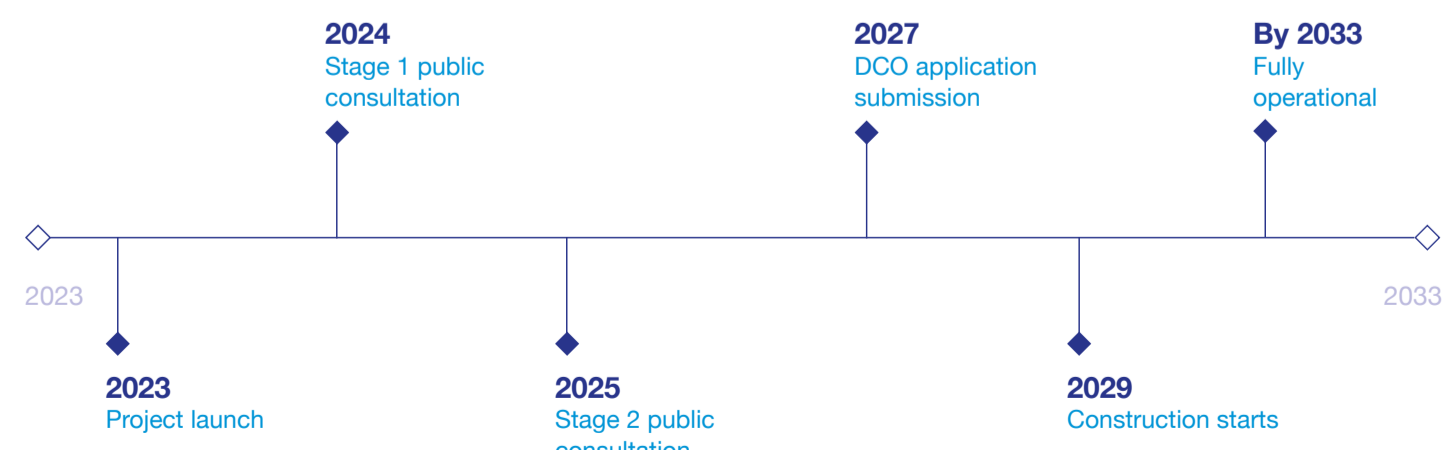
Next steps

The feedback received throughout the first stage of consultation will inform how our plans for Grimsby to Walpole are developed further and will influence the next stage in the design of the project.

Following this consultation, we will review all the feedback we receive and take that into consideration alongside environmental and technical surveys and assessment as we further develop our proposals.

A further stage of public consultation will be undertaken in 2025 about more detailed plans, where we will also explain in an interim report how feedback from this first stage of consultation has shaped our plans.

That will include preliminary environmental information, settling out what we know at that stage about environmental considerations where our plans are located. Feedback from that stage of public consultation will also inform any further work on our proposals, prior to submission of the application for a DCO.



Contact us contact@g-w.nationalgrid.com

0800 0129 153 (call us to request paper copies of the materials)

Freepost G TO W (no stamp or further address details are required)

If you feel your land may be affected by these proposals, our dedicated Land Team will be pleased to speak with you. You can contact the Grimsby to Walpole Land Team at Dalcour Maclaren by calling **0333 034 7961**, writing to **Unit 1, Staplehurst Farm, Weston on the Green, Oxfordshire OX25 3QU**, or by emailing **g-w@dalcourmaclaren.com**.

Consultation events

Consultation events

Throughout the consultation we are holding a series of face-to-face events. Our public information events are being held across the local area. Information about our proposals will be on display and copies of maps and technical documents will be available to view.

Members of the project team will be available to talk through our proposals and answer any questions.



Date and time	Venue	Date and time	Venue
Wednesday 31 January 2024, 2–7pm	Tydd St Giles Community Centre, Broad Drove East, Wisbech PE13 5LN	Tuesday 20 February 2024, 2–7pm	Walpole Community Centre, Summer Close, Wisbech PE14 7JW
Friday 2 February 2024, 2–7pm	Moulton Seas End Village Hall, 21 Seas End Road, Moulton Seas End, Spalding PE12 6LE	Thursday 22 February 2024, 2–7pm	The Pavilion, London Road, Louth LN11 9QP
Wednesday 7 February 2024, 2–7pm	Burgh Le Marsh Village Hall, Jacksons Lane, Burgh le Marsh, Skegness PE24 5LA	Saturday 24 February 2024, 11am–5pm	Oaklands Hall Hotel, Barton Street, Laceyby, Grimsby, Lincolnshire DN37 7LF
Saturday 10 February 2024, 11am–5pm	Alford Corn Exchange 9 Market Place, Alford LN13 9EB	Tuesday 27 February 2024, 2–7pm	Hubberts Bridge Community Centre, Langrick Road, Boston PE20 3SG
Tuesday 13 February 2024, 2–7pm	North Thoresby Village Hall, The Square, North Thoresby, Grimsby DN36 5QL	Thursday 29 February 2024, 2–7pm	Alvingham Village Hall, 352 Yarburgh Road, Alvingham, Louth LN11 0QG
Friday 16 February 2024, 2–7pm	Eastville, Midville and New Leake Village Hall Station Road, Boston PE22 8LS		

Webinars

Webinars

We welcome you to attend a one-hour online webinar session, where we will present details of our proposals followed by an open question and answer (Q&A) session. We are holding a series of general overview and location-themed webinars and invite you to attend the webinar most relevant to you. You can locate the most relevant section to you by visiting our online interactive map and entering a place or location of interest. You can also look at our Project Background Document for a high-level summary of these sections.

A recording of a general overview presentation will also be available to view on our website. Details on how to sign up for a webinar are available on the website or by contacting the community relations team by phone on **0800 0129 153** or by email at contact@g-w.nationalgrid.com.

Webinar session	Date	Start time
Introduction to Grimsby to Walpole project proposals – general overview	Tuesday 23 January 2024	2pm
Our proposals in Sections 1 (Grimsby West to Barnoldby le Beck) and 2 (Barnoldby le Beck to North Thoresby)	Thursday 25 January 2024	10am
Our proposals in Sections 3 (North Thoresby to Alvingham and Keddington) and 4 (Alvingham and Keddington to Tothill)	Monday 29 January 2024	7pm
Our proposals in Sections 5 (Tothill to Cumberworth) and 6 (Cumberworth to Burgh le Marsh)	Monday 5 February 2024	2pm
Our proposals at the Lincolnshire Connection substations	Thursday 15 February 2024	10am
Our proposals in Sections 7 (Burgh le Marsh to Midville) and 8 (Midville to River Witham)	Saturday 2 March 2024	10am
Our proposals in Sections 9 (River Witham to River Welland), 10 (River Welland to B1165) and 11 (B1165 to Walpole)	Tuesday 5 March 2024	7pm
Introduction to Grimsby to Walpole project proposals – general overview	Thursday 7 March 2024	2pm

Local information points

Paper copies of the consultation newsletter and feedback form are available to collect from one of the following local information points. These are located within or in close proximity to the emerging preferred corridor.

Reference copies of the Strategic Options Report, Addendum to the Strategic Options Report, New Walpole Substation Location Options Report, Corridor Preliminary Routing and Siting Study,

Public information points

Public information points
North East Lincolnshire Grimsby Central Library, Town Hall Square, Grimsby DN31 1HG Waltham Library, High Street, Waltham, Grimsby DN37 0LL
East Lindsey Louth Library, Northgate, Louth LN11 0LY Alford Focal Point and Library, 6 Market Place, Alford LN13 9AF Burgh le Marsh Library, Hub Tinkers Green, Jacksons Lane, Burgh le Marsh, Skegness PE24 5LA Skegness Library, 23 Roman Bank, Skegness PE25 2SA
Boston Boston Library, County Hall, Bank Street, Entrance, Boston PE21 6DY
South Holland Spalding Library, Victoria Street, Spalding PE11 1EA Holbeach Library, 5 Fleet Street, Holbeach, Spalding PE12 7AD Long Sutton Library, Trafalgar Square, Long Sutton, Spalding PE12 9HB
Fenland Wisbech Library, Ely Place, Wisbech PE13 1EU
King's Lynn and West Norfolk King's Lynn Library, London Road, King's Lynn PE30 5EZ (reference copies only)

Email us

If you prefer to send us your comments via email, you can send them to us at contact@g-w.nationalgrid.com.

Send us a letter

You can send a letter or completed feedback form to **Freepost G TO W** (no stamp or further address details are required).

Call us

If you have any questions about the project, or require any assistance with providing feedback, please call us on **0800 0129 153**. Lines are open Monday to Friday 9:00am–5:30pm, with an answerphone facility taking messages outside of these hours.

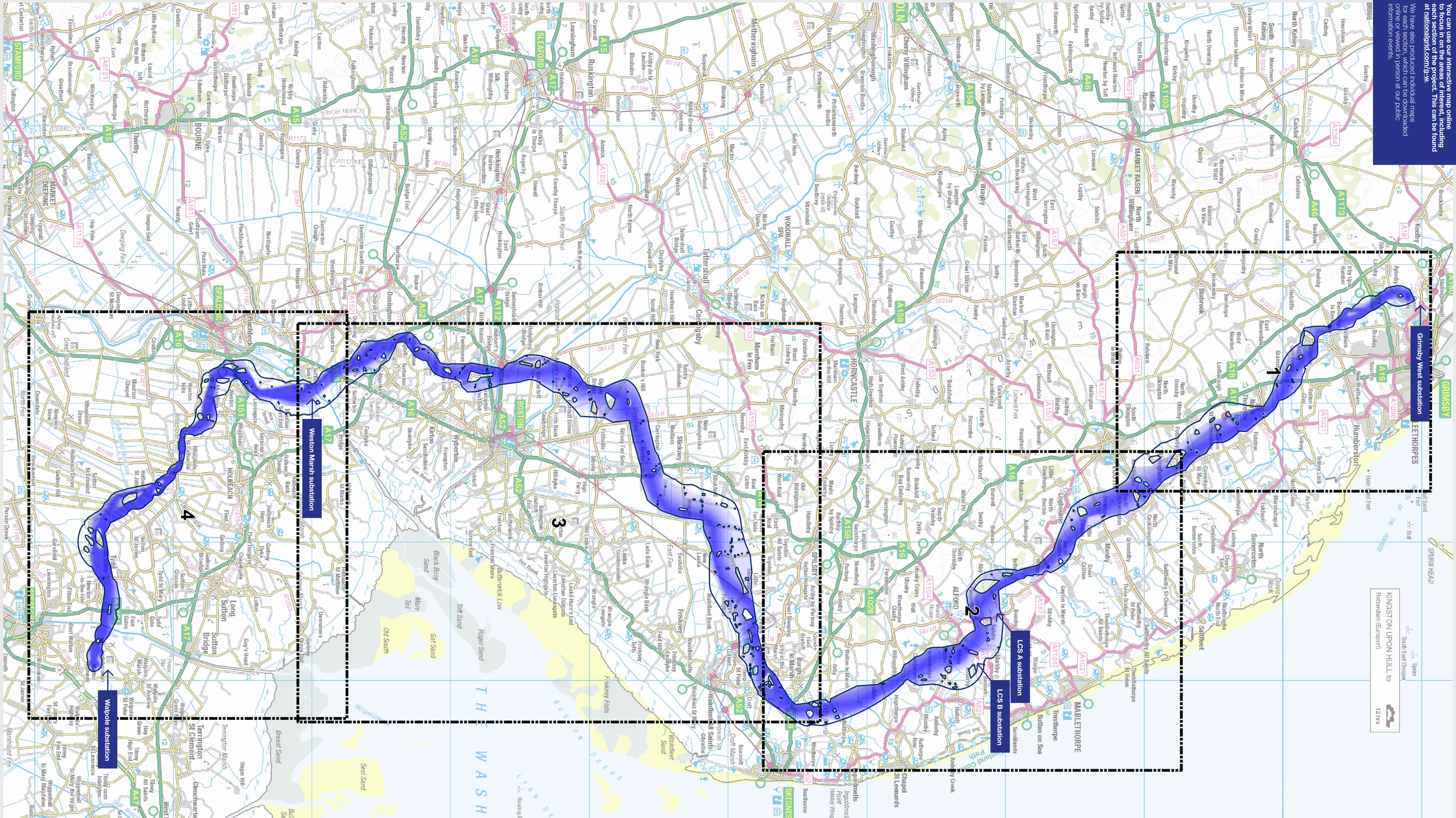
Other information

If you would prefer to receive any information relating to the consultation through the post, or you need it in another format, please get in touch.

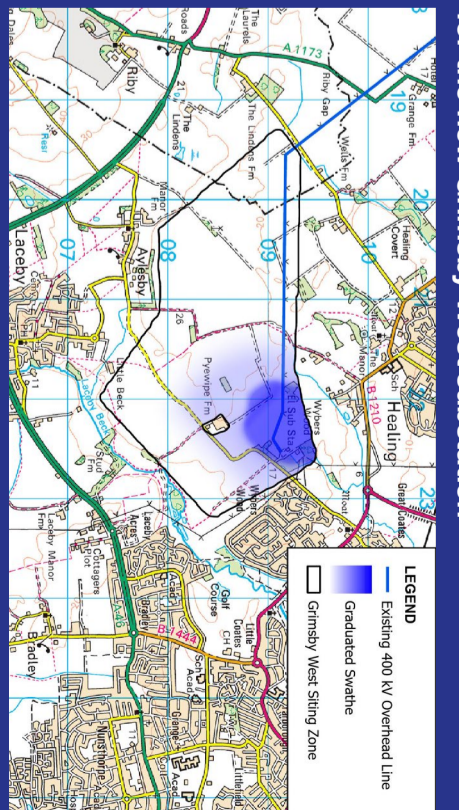
and Project Background Document are also available in these locations.

Documents will be available at these locations throughout the consultation period.

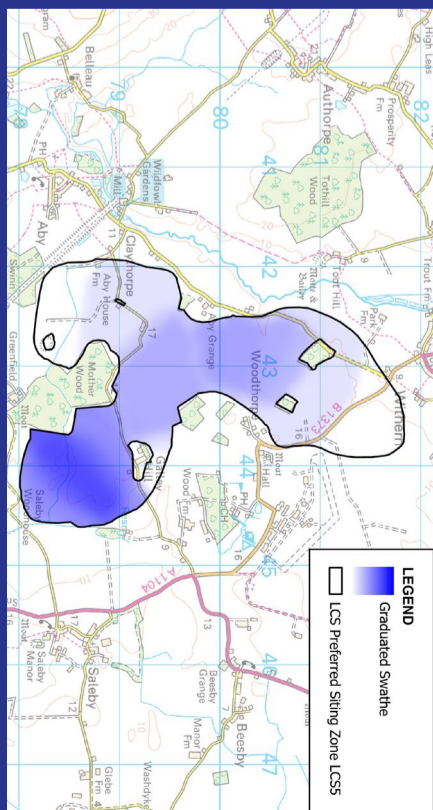
Local information point opening hours can be subject to change. Please check with the relevant venue for the most up-to-date opening hours.



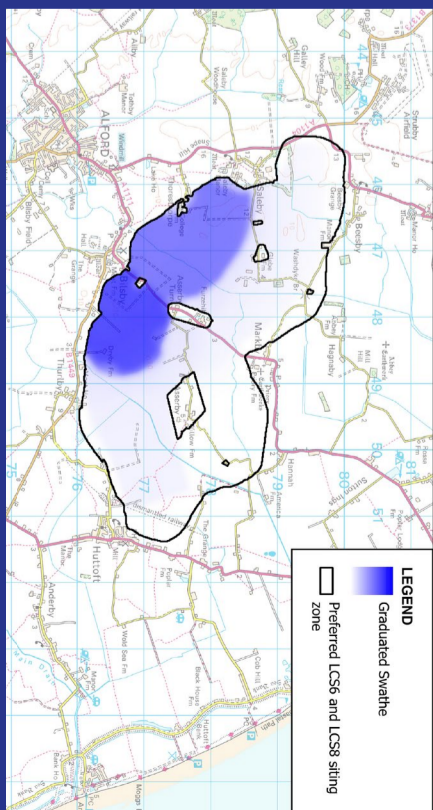
KINGSTON UPON HULL to
 Fortham (European)
 12 hrs



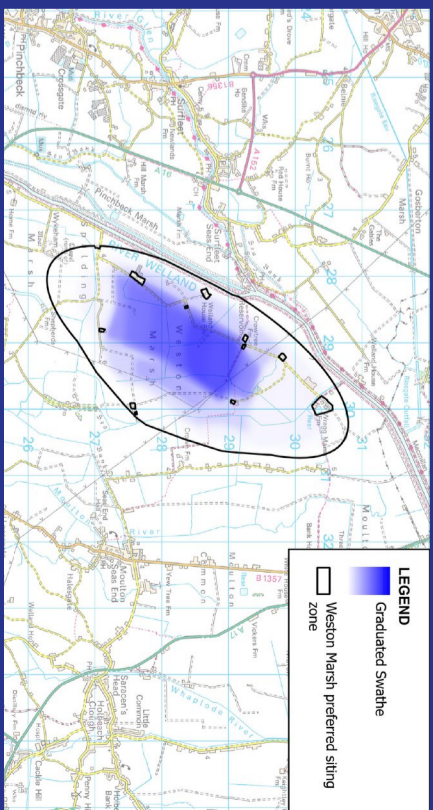
Map showing the emerging preferred locations for the new Grimsby West substation



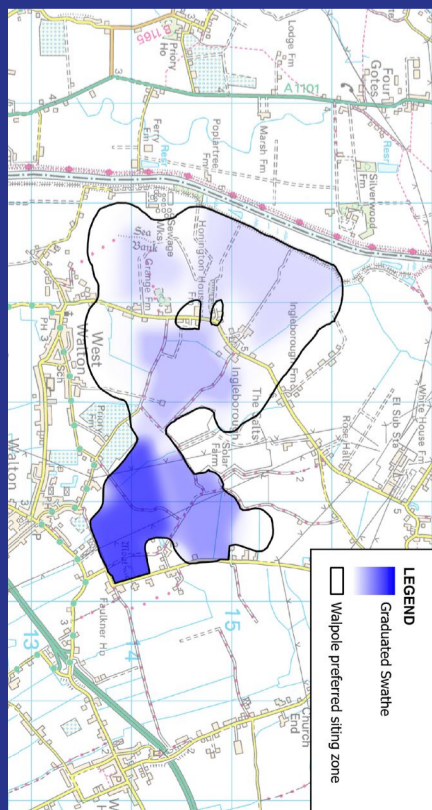
Map showing the emerging preferred locations for the new LCS A substation



Map showing the emerging preferred locations for the new LCS B substation



Map showing the emerging preferred locations for the new Weston Marsh substation



Map showing the emerging preferred locations for the new Walpole substation

