



The Great Grid Upgrade

Norwich to Tilbury

Project Update

December 2023

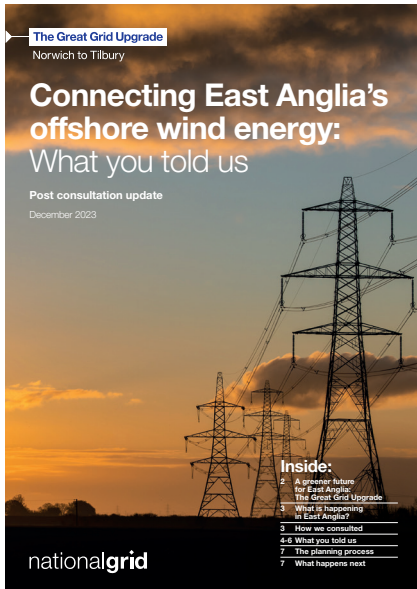
nationalgrid

This update brings you the latest news and information as we continue to develop our proposals and prepare for statutory consultation on the project next year.

Norwich to Tilbury is an important part of The Great Grid Upgrade – the largest overhaul of the electricity grid in generations. The Great Grid Upgrade will play a big part in the UK government’s plan to boost homegrown power.

It will help the UK switch to clean energy and make sure our electricity network is fit for the future; carrying more clean, secure and affordable energy from where it’s generated to where it is needed.

Project news



Community Newsletter

We recently posted a community newsletter to all properties along the proposed route of the new transmission line from Norwich to Tilbury. It provides an initial update on some of the issues that were raised during the second stage of public consultation in the summer.

Consultation is important in helping us refine our proposals and understand the issues and concerns that communities have.

Since the summer, we have been carefully considering all the feedback received. When we hold our next public consultation, we will publish a feedback report to set out how we have responded to the issues raised and how feedback has influenced our decisions when developing the project design.



Surveys over winter

You might see some survey activity in areas close to the route during the winter. This includes our ecology and habitat surveys as well as our Ground Investigation (GI) studies, which include borehole drilling, trial pit digging and monitoring activities. We need to carry out GI studies to help us better understand the ground conditions and potential effects of any future work as part of our technical and engineering assessments.

The findings from our surveys will help inform decisions on the routing and siting of electricity transmission infrastructure as well as how we might build it, and how we might avoid, limit or mitigate any construction impacts.

It is normal for these surveys to take place at an early stage of project development – we have to understand the technical and environmental data and show we have had careful regard to it in the application for a Development Consent Order (DCO) to build the project. Landowners are aware of the survey work, and we have discussed our access arrangements with them.

We are also carrying out traffic surveys so you may see some radar and data traffic counting equipment. This will help us understand traffic movements in the region.

More information on where we are carrying out surveys over the next month can be found [here](#).

Autumn Statement and Government policy updates

In November, the Government published a number of announcements and policy updates which are relevant to the Norwich to Tilbury project.

Government funding for offshore coordination

The Department for Energy Security & Net Zero has recently announced funding for three offshore projects to consider if they could deliver a coordinated offshore connection.

A consortium of Sea Link, North Falls Offshore Wind Farm and Five Estuaries Offshore Wind Farm will now undertake a series of studies and assessments to determine the feasibility, challenges and solutions to enable a co-ordinated offshore connection.

At the same time, the Electricity System Operator (ESO), which is responsible for identifying future network requirements, is carrying out a study to assess the potential options for Norwich to Tilbury and other proposed network reinforcements across East Anglia, following the outcome of the OCSS awards.

Once this is published we will back-check and review our proposals for Norwich to Tilbury and present our conclusions at the next stage of consultation. Any coordination of the offshore project would still require a connection for the power to come onshore at some point. And it would not take away the primary need for Norwich to Tilbury to upgrade the transmission network in East Anglia to connect new sources of renewable energy, including offshore wind projects connecting into Norfolk.

The consortium members are continuing to develop their onshore DCO proposals in parallel with the coordination studies.

Until we know the outcome of those studies, it is important that we continue to develop our proposals for Norwich to Tilbury to meet our statutory duties and responsibilities to deliver the new renewable sources of energy to homes and business across the UK.



Community Benefit

Alongside the Autumn Statement, the Government published its response to the consultation which set out the Government's intention to introduce guidance on how local communities should benefit from the development of onshore transmission infrastructure.

We believe communities are playing a fundamental role in the energy transition and that those that host infrastructure should receive fair and enduring benefits for doing so.

We support the Government's announcement and believe the introduction of guidance will help to bring greater clarity and consistency.

The Government also announced its intention to explore a bill discount scheme for households in close proximity to proposed new onshore transmission infrastructure. This is a developing government policy. At this stage, there are no further details about how this potential scheme would work, or who would be eligible.

We will continue to work with the Government and our regulator as they define the details of these schemes and, once published, will work to understand what this means for the project and local communities.

National Policy Statements

The Government has now published the new National Policy Statements for energy infrastructure, together with its response to its consultation.

The National Policy Statement (NPS) for energy hadn't been updated since 2011. Since then we have seen a significant amount of change, including the Government's commitment to net-zero by 2050 and to delivering 50GW of offshore wind by 2030.

The new NPS is clear that electricity network infrastructure projects like Norwich to Tilbury are classified as Critical National Priority (CNP) and are critical to meet the Government's ambitions for net zero and energy security.

We welcome the updated National Policy Statements, which now provide greater clarity, to both developers and decision makers, on the policy requirements we need to meet when delivering these essential energy infrastructure projects.

You can view them [here](#).