

- LEGEND**
- Project Boundary
  - Freehold Acquisition
  - Land in respect of which rights are being created
  - Local Authority Boundary



*Jim Fox*  
NGE 11162

MEMBER OF THE BOARD SEALING COMMITTEE

The common seal of National Grid Electricity Transmission plc was affixed on the 12<sup>th</sup> day of January 2023 in the presence of

(Member of the Board Sealing Committee and Authorised Signatory)

Dated 12 January 2023

BACKGROUND MAPPING INFORMATION HAS BEEN REPRODUCED FROM THE ORDNANCE SURVEY ON BEHALF OF THE CONTROLLER OF HIS MAJESTY'S STATIONARY OFFICE. © CROWN COPYRIGHT AND DATABASE RIGHTS 2020 OS 0100059731


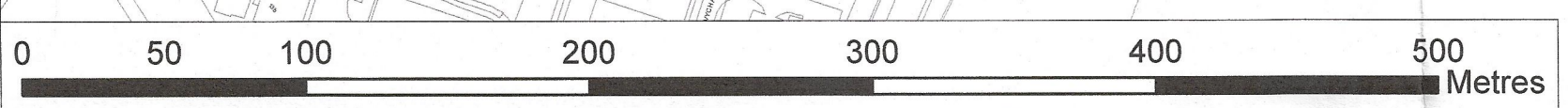
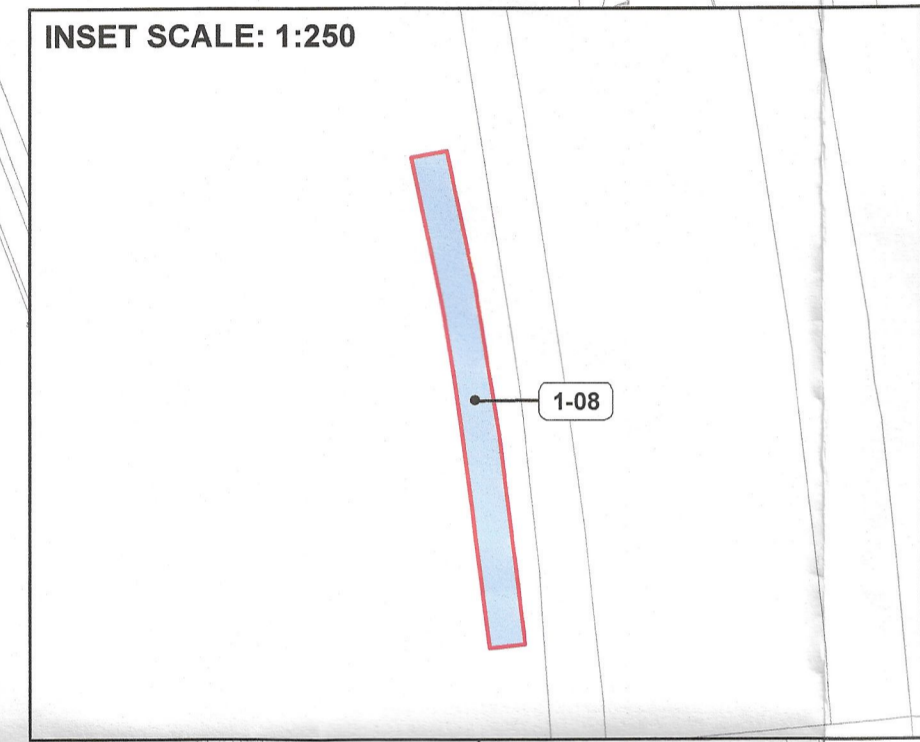
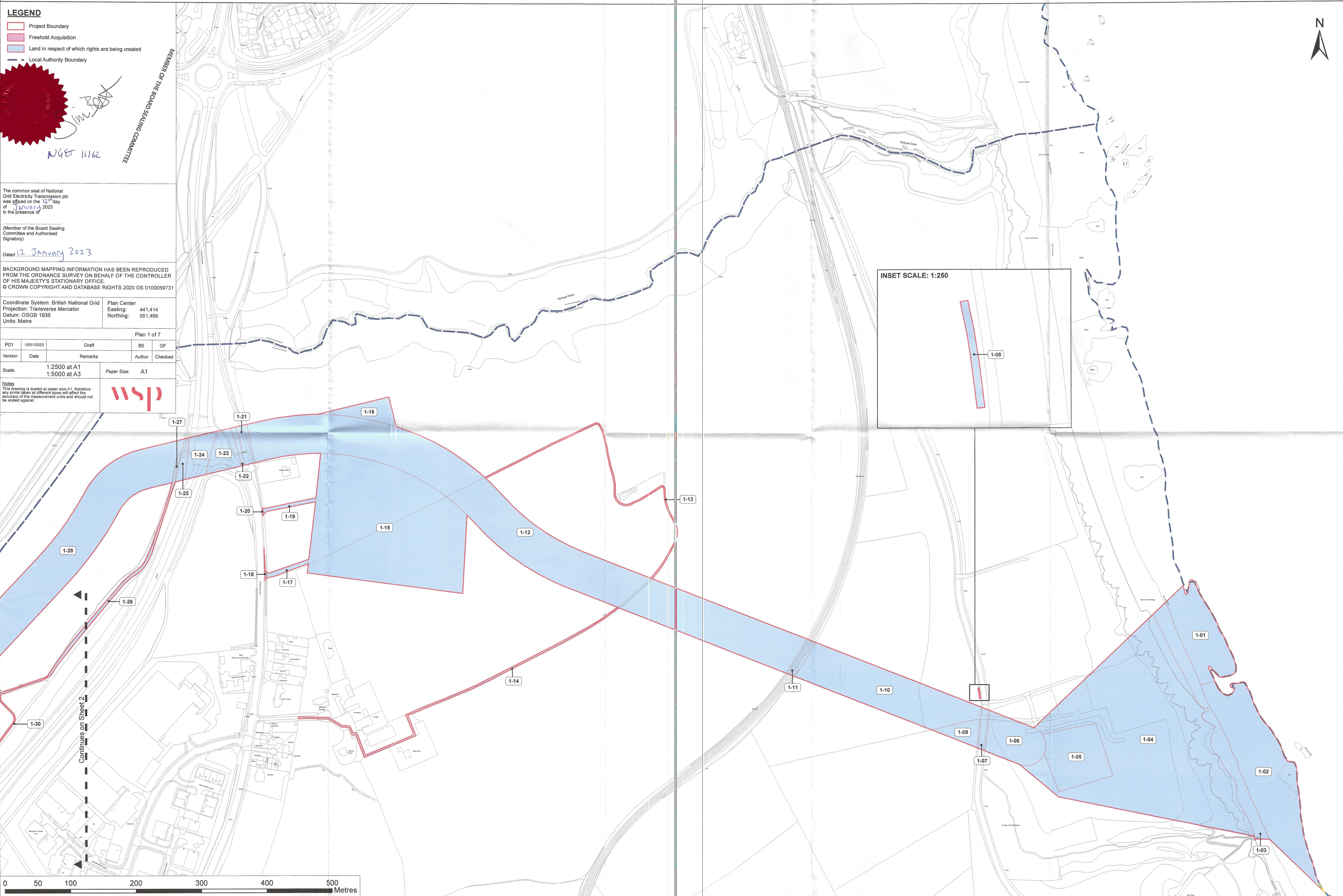
Coordinate System: British National Grid  
 Projection: Transverse Mercator  
 Datum: OSGB 1936  
 Units: Metre

Plan Center Easting: 441,414  
 Northing: 551,469

Plan 1 of 7

P01	10/1/2023	Draft	BS	OF
Version	Date	Remarks	Author	Checked
Scale:	1:2500 at A1			
	1:5000 at A3	Paper Size:	A1	

**Notes**  
 This drawing is scaled at paper size A1, therefore any prints taken at different sizes will affect the accuracy of the measurement units and should not be scaled against.

- LEGEND**
- Project Boundary
  - Freehold Acquisition
  - Land in respect of which rights are being
  - Local Authority Boundary

*Simon [Signature]*  
N 427/11162

MEMBER OF THE BOARD SEALING COMMITTEE

The common seal of National Grid Electricity Transmission plc was affixed on the 12<sup>th</sup> day of January 2023 in the presence of  
 (Member of the Board Sealing Committee and Authorised Signatory)  
 Dated 12 January 2023

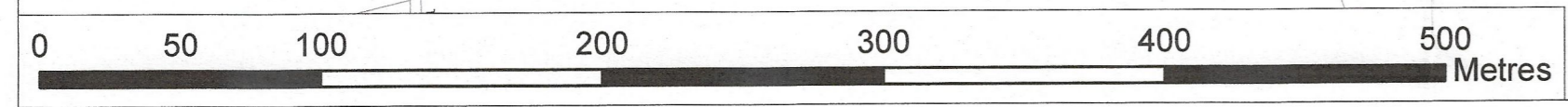
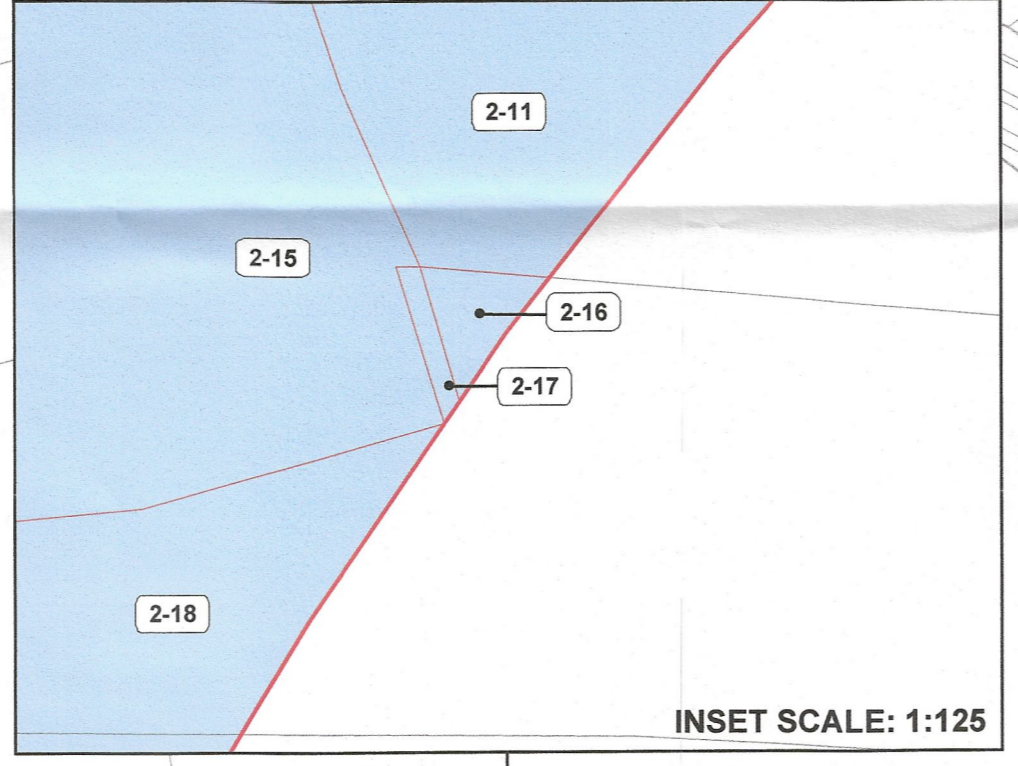
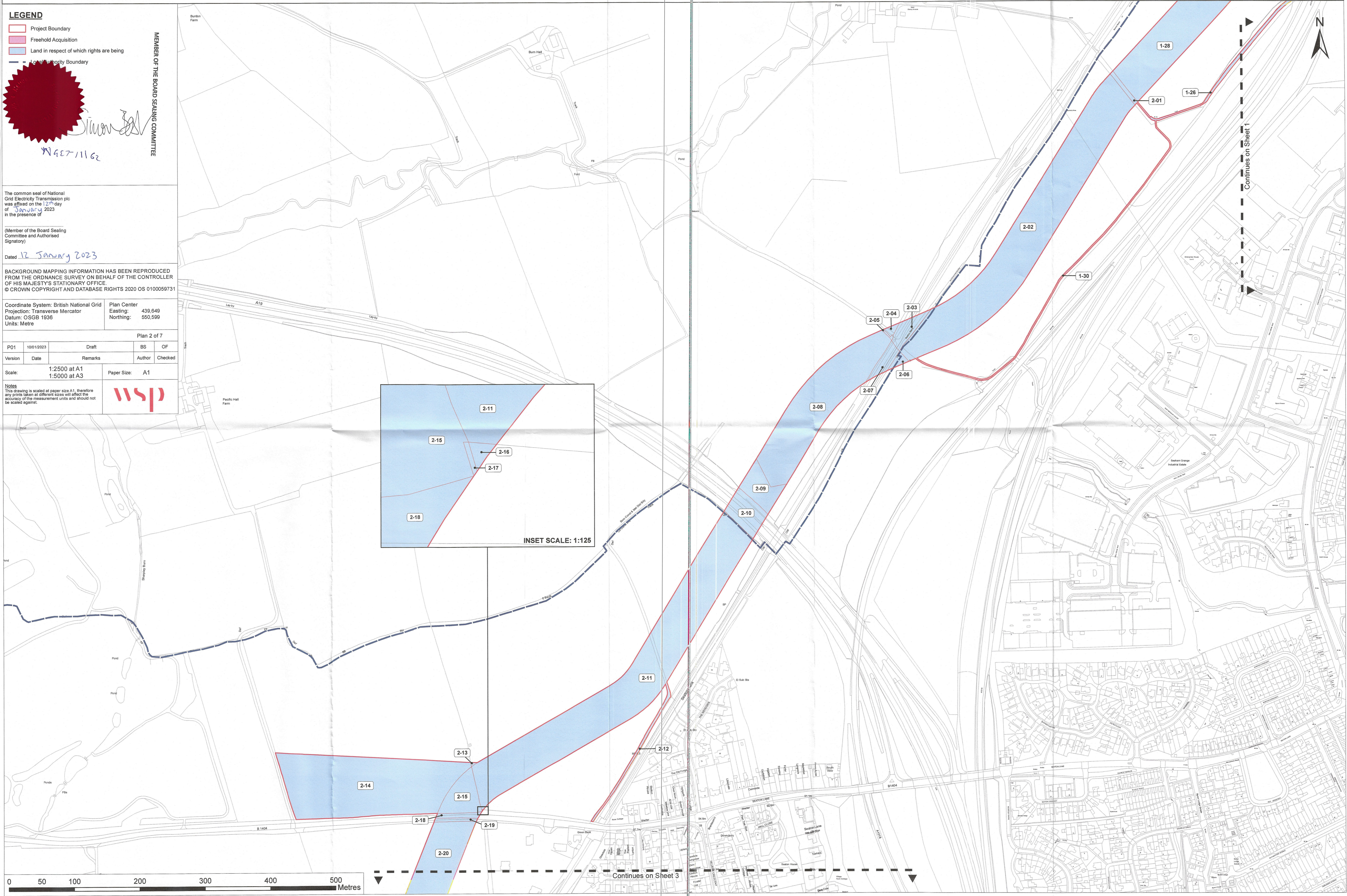
BACKGROUND MAPPING INFORMATION HAS BEEN REPRODUCED FROM THE ORDNANCE SURVEY ON BEHALF OF THE CONTROLLER OF HIS MAJESTY'S STATIONARY OFFICE.  
 © CROWN COPYRIGHT AND DATABASE RIGHTS 2020 OS 0100059731

Coordinate System: British National Grid  
 Projection: Transverse Mercator  
 Datum: OSGB 1936  
 Units: Metre

Plan Center  
 Easting: 430 849  
 Northing: 550 599

Plan 2 of 7				
PO1	10/01/2023	Draft	BS	OF
Version	Date	Remarks	Author	Checked
Scale:	1:2500 at A1			
	1:5000 at A3	Paper Size:	A1	

**Notes**  
 This drawing is scaled at paper size A1, therefore any prints taken at different sizes will affect the accuracy of the measurement units and should not be scaled against.



Continues on Sheet 3

Continues on Sheet 1

- LEGEND**
- Project Boundary
  - Freehold Acquisition
  - Land in respect of which rights are being
  - Local Authority Boundary



The common seal of National Grid Electricity Transmission plc was affixed on the 12<sup>th</sup> day of January 2023 in the presence of

MEMBER OF THE BOARD SEALING COMMITTEE

NGET 11162

Dated 12 January 2023

BACKGROUND MAPPING INFORMATION HAS BEEN REPRODUCED FROM THE ORDNANCE SURVEY ON BEHALF OF THE CONTROLLER OF HIS MAJESTY'S STATIONARY OFFICE.  
© CROWN COPYRIGHT AND DATABASE RIGHTS 2020 OS 0100059731

Coordinate System: British National Grid  
Projection: Transverse Mercator  
Datum: OSGB 1936  
Units: Metre

Plan Center  
Easting: 439,044  
Northing: 549,305

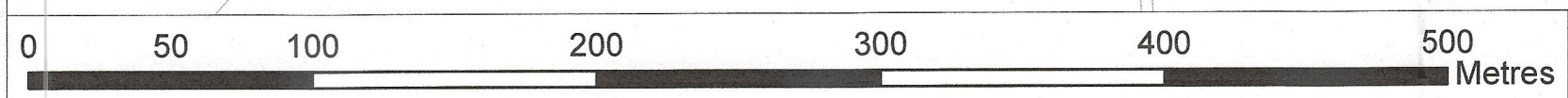
Plan 3 of 7

Version	Date	Remarks	Author	Checked
PC1	10/01/2023	Draft	BS	OF

Scale: 1:2500 at A1  
1:5000 at A3

Paper Size: A1

Notes  
This drawing is scaled at paper size A1, therefore any prints taken at different sizes will affect the accuracy of the measurement units and should not be scaled against.



**LEGEND**

- Project Boundary
- Freehold Acquisition
- Land in respect of which rights are being
- Local Authority Boundary

**MEMBER OF THE BOARD SEALING COMMITTEE**

The common seal of National Grid Electricity Transmission plc was affixed on the 12<sup>th</sup> day of January 2023 in the presence of

(Member of the Board Sealing Committee and Authorised Signatory)

NGET 11162

Dated 12 January 2023

BACKGROUND MAPPING INFORMATION HAS BEEN REPRODUCED FROM THE ORDNAVANCE SURVEY ON BEHALF OF THE CONTROLLER OF HIS MAJESTY'S STATIONARY OFFICE © CROWN COPYRIGHT AND DATABASE RIGHTS 2020 OS 0100059731

Coordinate System: British National Grid  
 Projection: Transverse Mercator  
 Datum: OSGB 1936  
 Units: Metre

Plan Center  
 Easting: 438,445  
 Northing: 548,033

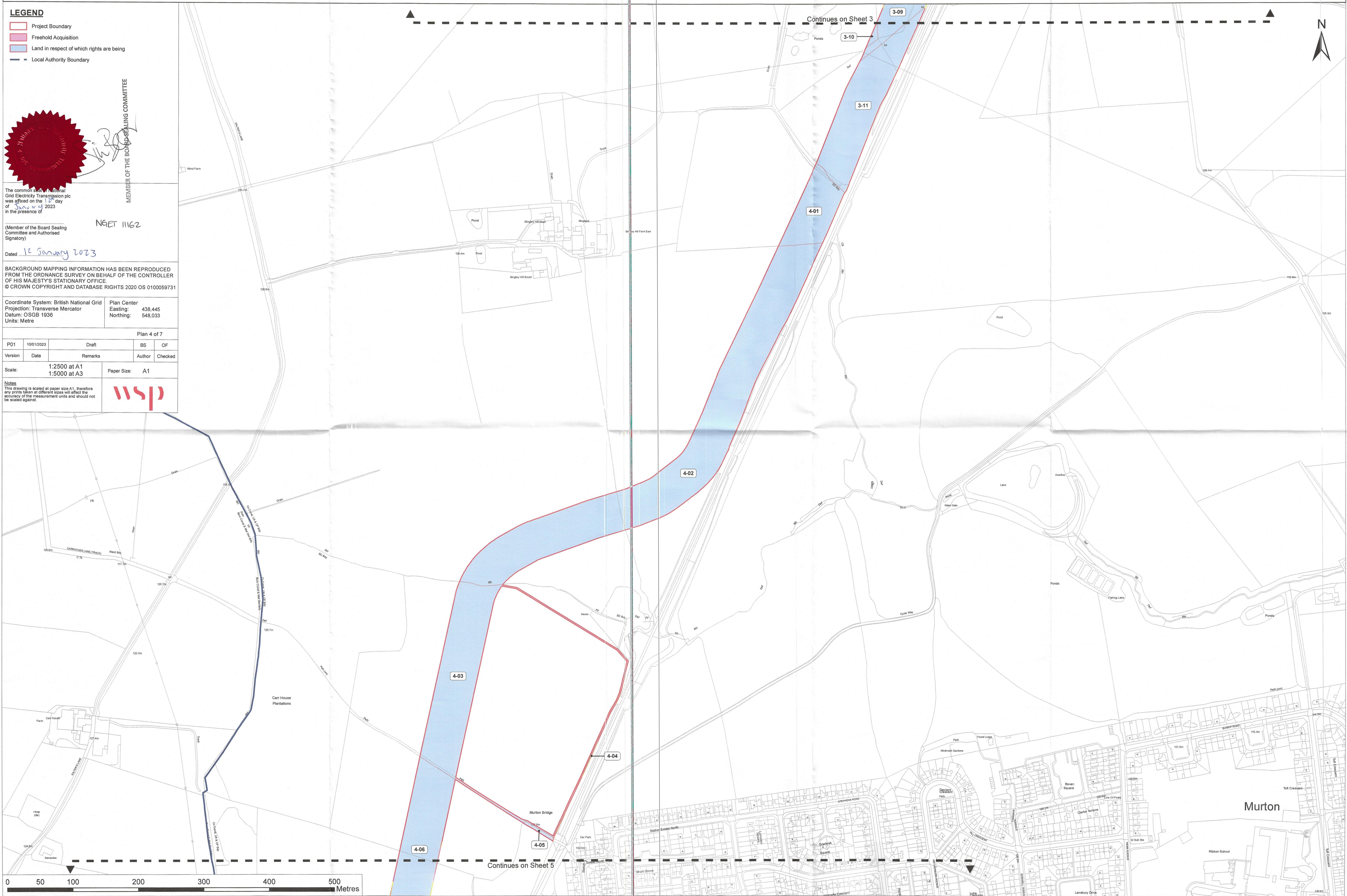
Plan 4 of 7

P01	1001/2023	Draft	BS	OF
Version	Date	Remarks	Author	Checked

Scale: 1:2500 at A1  
 1:5000 at A3

Paper Size: A1

**Notes**  
 This drawing is scaled at paper size A1, therefore any prints taken at different sizes will affect the accuracy of the measurement units and should not be scaled against.



Murton

- LEGEND**
- Project Boundary
  - Freehold Acquisition
  - Land in respect of which rights are being
  - Local Authority Boundary

MEMBER OF THE BOARD SEALING COMMITTEE



The common seal of National Grid Electricity Transmission plc was affixed on the 17<sup>th</sup> day of January 2023 in the presence of

(Member of the Board Sealing Committee and Authorised Signatory) **NGET 11162**

Dated 17 January 2023

BACKGROUND MAPPING INFORMATION HAS BEEN REPRODUCED FROM THE ORDNANCE SURVEY ON BEHALF OF THE CONTROLLER OF HIS MAJESTY'S STATIONARY OFFICE.  
© CROWN COPYRIGHT AND DATABASE RIGHTS 2020 OS 0100059731

Coordinate System: British National Grid  
Projection: Transverse Mercator  
Datum: OSGB 1936  
Units: Metre

Plan Center  
Easting: 437,952  
Northing: 546,746


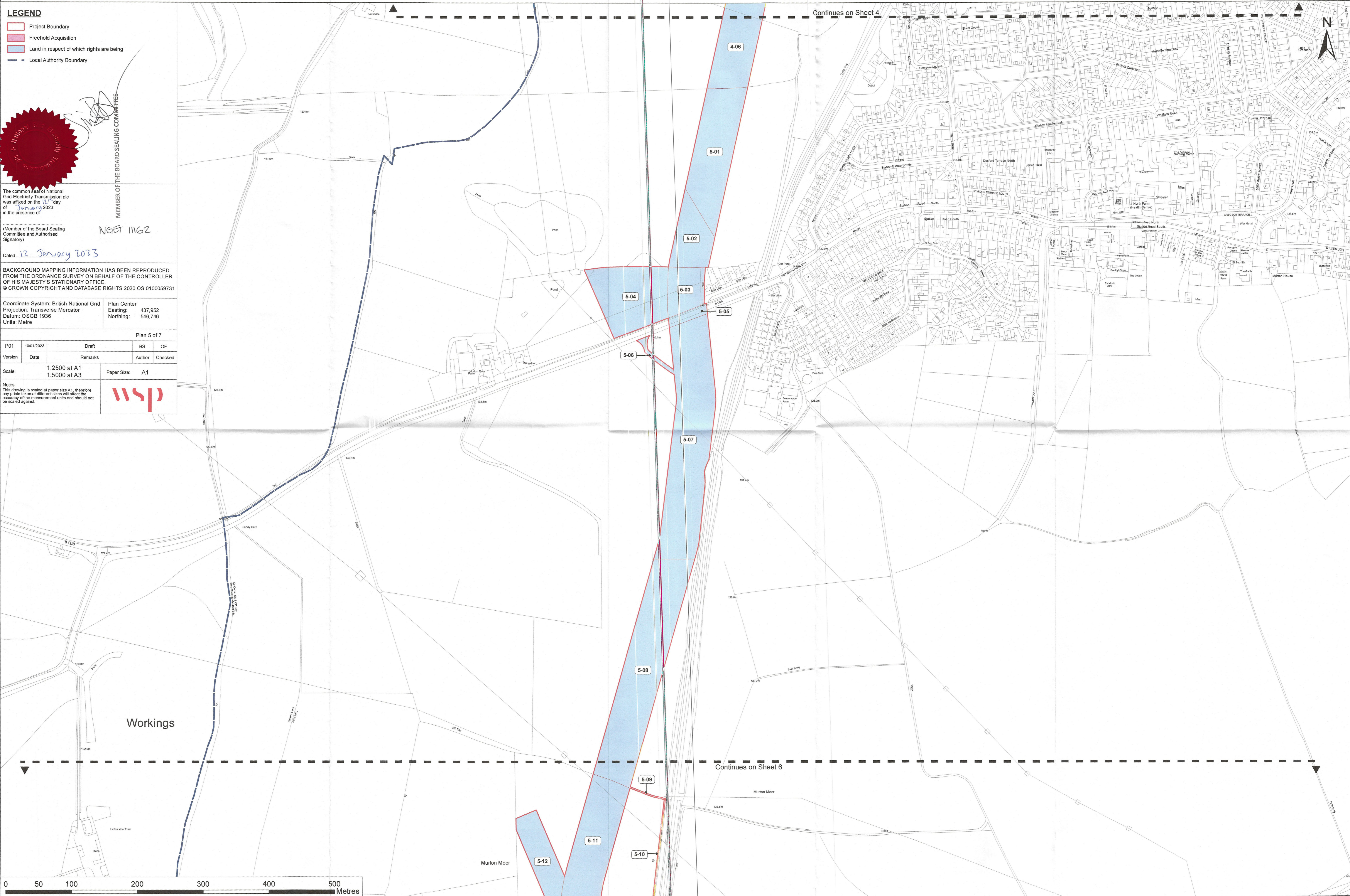
Plan 5 of 7

PO1	10/01/2023	Draft	BS	OF
Version	Date	Remarks	Author	Checked

Scale: 1:2500 at A1  
1:5000 at A3

Paper Size: A1

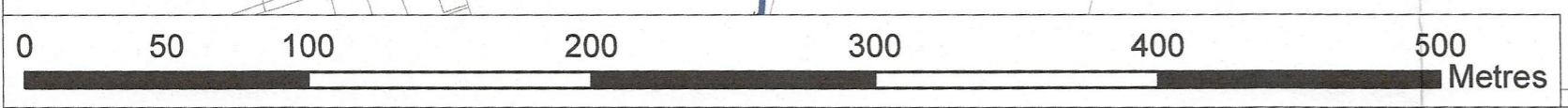
**Notes**  
This drawing is scaled at paper size A1, therefore any prints taken at different sizes will affect the accuracy of the measurement units and should not be scaled against.

Continues on Sheet 4

Continues on Sheet 6

Workings



- LEGEND**
- Project Boundary
  - Freehold Acquisition
  - Land in respect of which rights are being created
  - Local Authority Boundary

MEMBER OF THE BOARD SEALING COMMITTEE

NGET 11162

Dated 12 January 2023

The common seal of National Grid Electricity Transmission plc was affixed on the 12<sup>th</sup> day of January 2023 in the presence of

(Member of the Board Sealing Committee and Authorised Signatory)

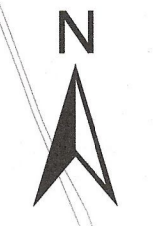
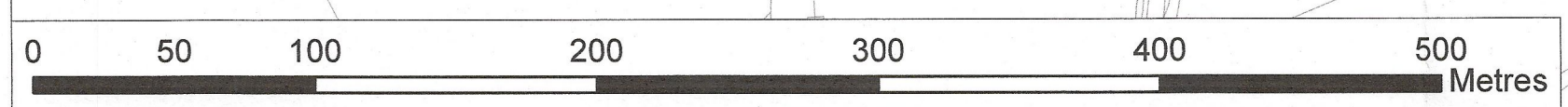
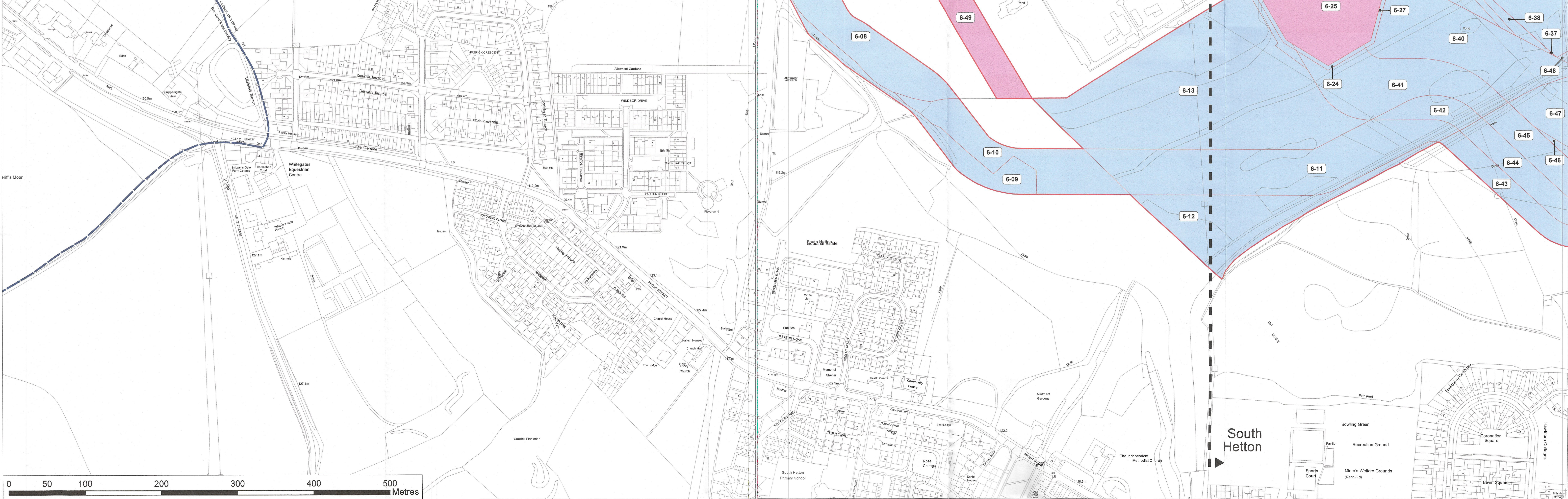
BACKGROUND MAPPING INFORMATION HAS BEEN REPRODUCED FROM THE ORDINANCE SURVEY ON BEHALF OF THE CONTROLLER OF HIS MAJESTY'S STATIONARY OFFICE. © CROWN COPYRIGHT AND DATABASE RIGHTS 2020 OS 0100059731

Coordinate System: British National Grid  
 Projection: Transverse Mercator  
 Datum: OSGB 1936  
 Units: Metre

Plan Center  
 Easting: 437,905  
 Northing: 545,738

Plan 6 of 7				
P01	10/01/2023	Draft	BS	OF
Version	Date	Remarks	Author	Checked
Scale:	1:2500 at A1			
	1:5000 at A3	Paper Size:	A1	

**Notes**  
 This drawing is scaled at paper size A1, therefore any prints taken at different sizes will affect the accuracy of the measurement units and should not be scaled against.



Continues on Sheet 5

Continues on Sheet 7

South Hetton

- LEGEND**
- Project Boundary
  - Freehold Acquisition
  - Land in respect of which rights are being
  - Local Authority Boundary

MEMBER OF THE BOARD SEALING COMMITTEE

*[Signature]*

The common seal of National Grid Electricity Transmission plc was affixed on the 1<sup>st</sup> day of January 2023 in the presence of

(Member of the Board Sealing Committee and Authorised Signatory)

NGET 1162

Dated 12 January 2023

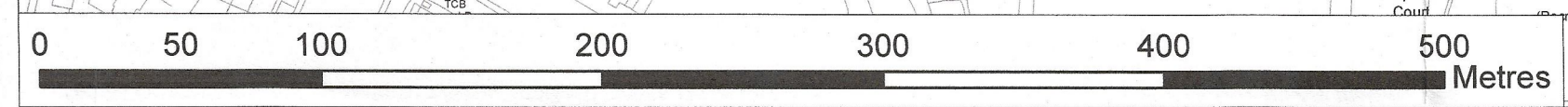
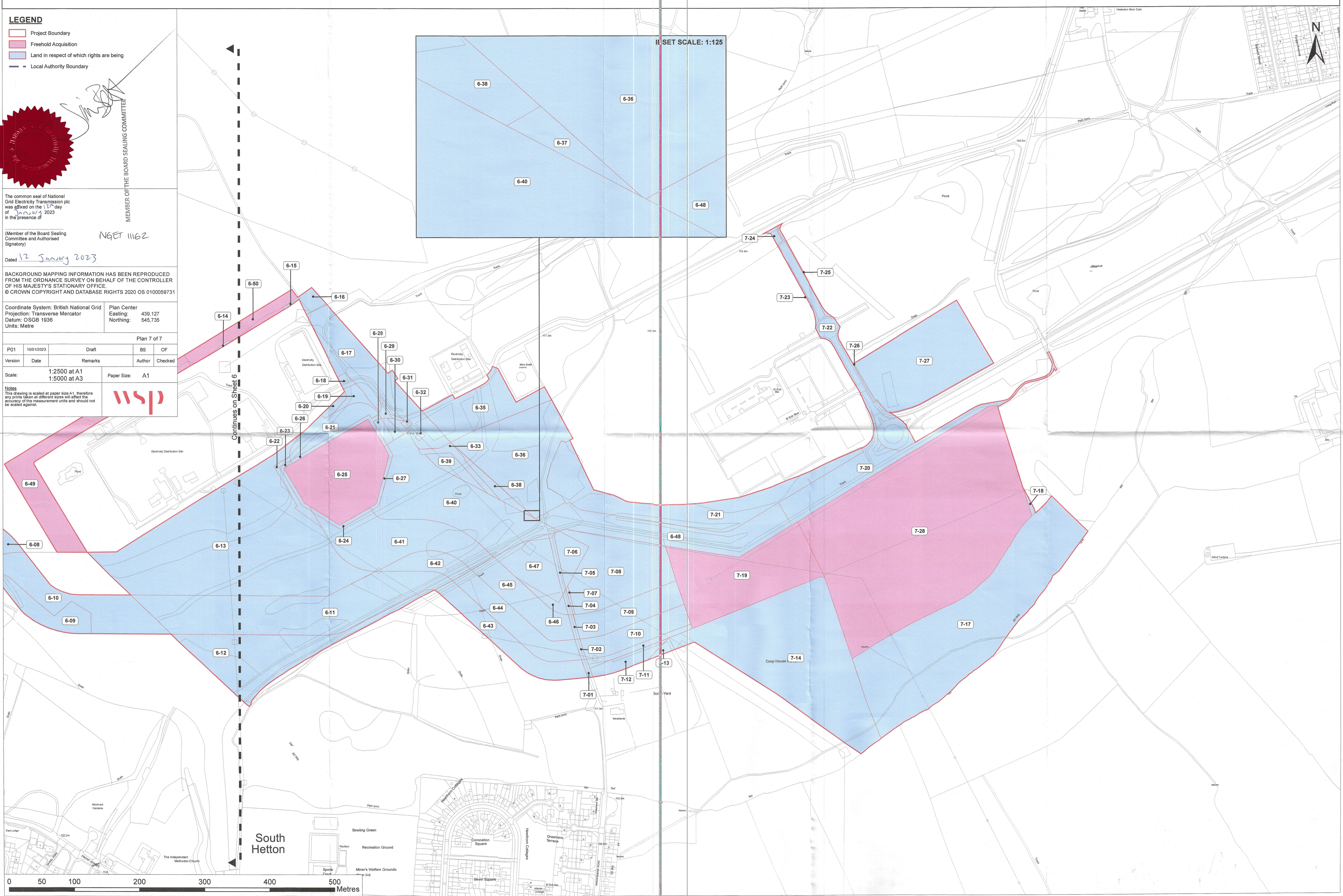
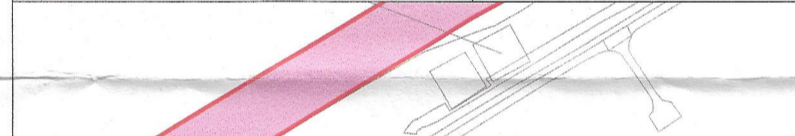
BACKGROUND MAPPING INFORMATION HAS BEEN REPRODUCED FROM THE ORDNANCE SURVEY ON BEHALF OF THE CONTROLLER OF HIS MAJESTY'S STATIONARY OFFICE.  
© CROWN COPYRIGHT AND DATABASE RIGHTS 2020 OS 0100059731

Coordinate System: British National Grid  
Projection: Transverse Mercator  
Datum: OSGB 1936  
Units: Metre

Plan Center  
Easting: 439,127  
Northing: 545,735

Plan 7 of 7				
PO1	100102023	Draft	BS	OF
Version	Date	Remarks	Author	Checked
		1:2500 at A1		
		1:5000 at A3	Paper Size:	A1

**Notes**  
This drawing is scaled at paper size A1, therefore any prints taken at different sizes will affect the accuracy of the measurement units and should not be scaled against.



South Hetton

Continues on Sheet 6