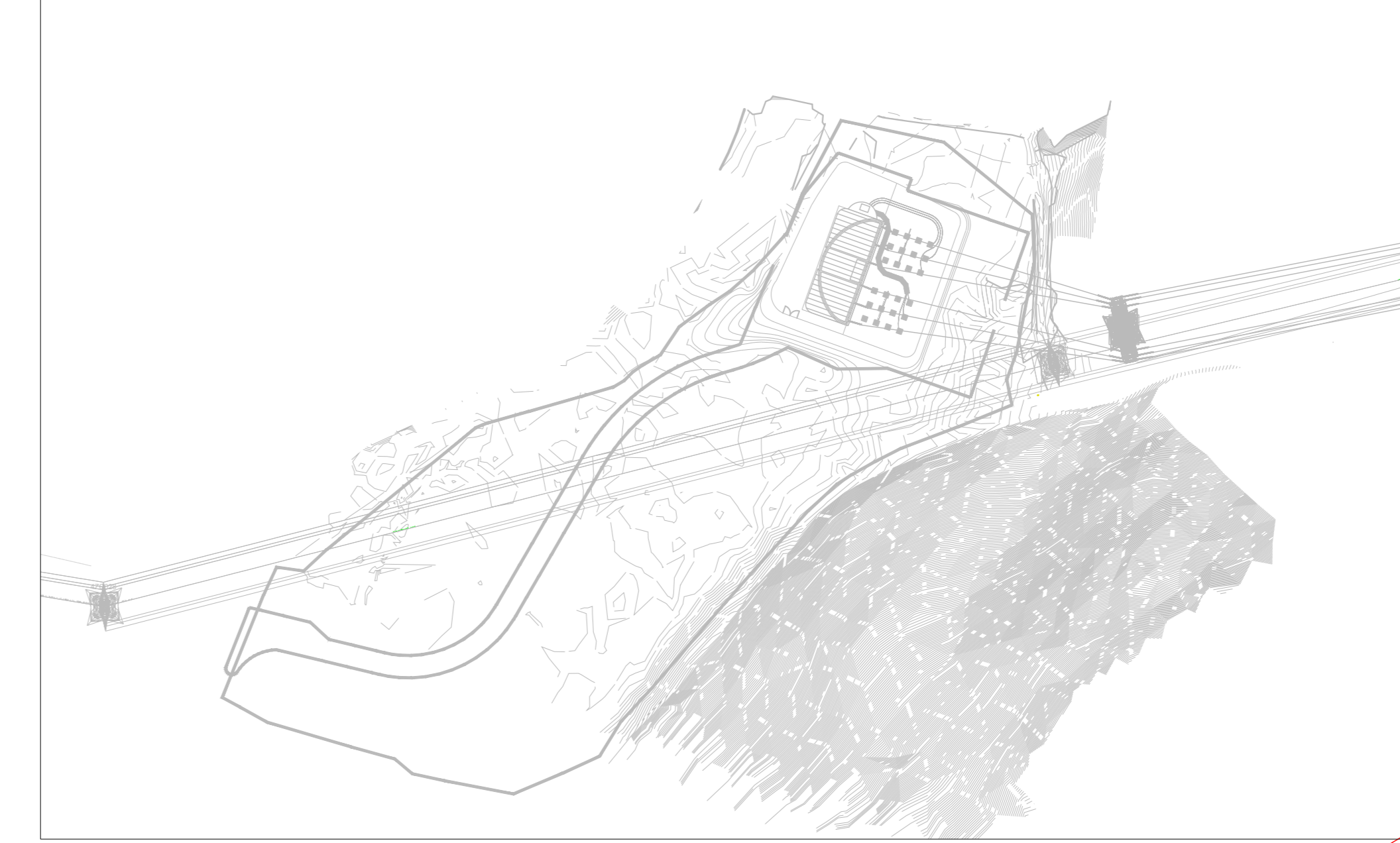
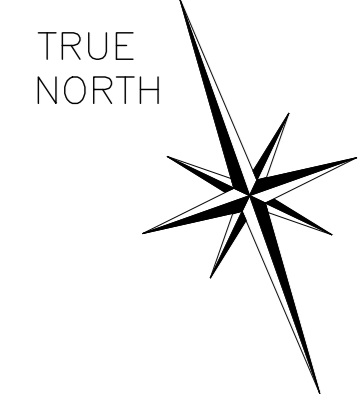


A B C D E F G H I J K L M N O P P

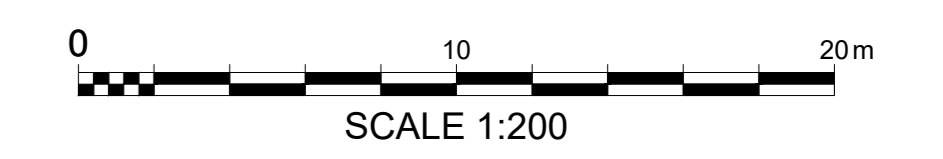
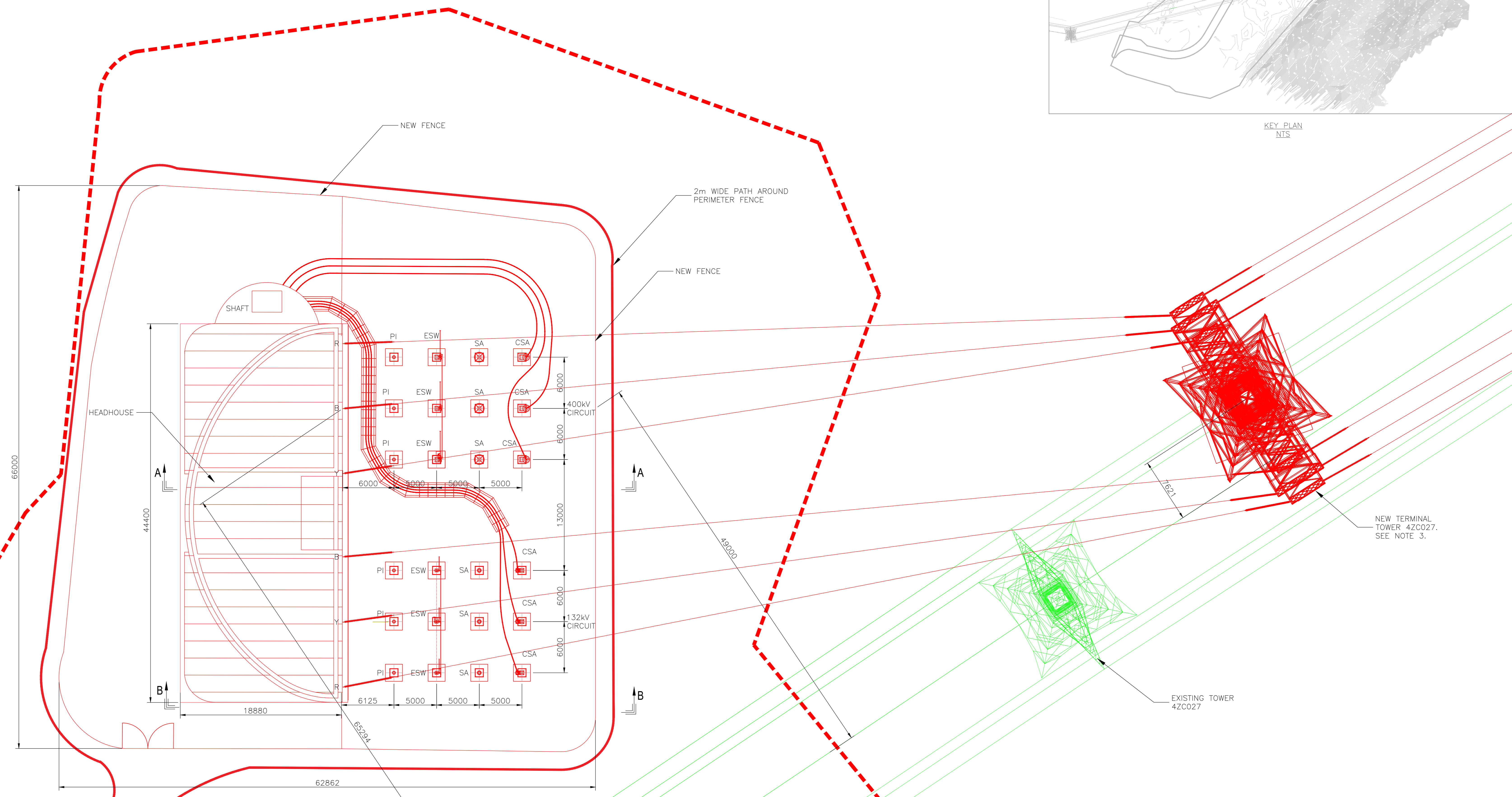


SUBSTATION MINIMUM ELECTRICAL CLEARANCES IN ACCORDANCE WITH TS 2.1			
REF	NOMINAL SYSTEM VOLTAGE (rms)	132kV	400kV
1	PHASE TO EARTH CLEARANCE	1.1M	2.8M
2	PHASE TO PHASE CLEARANCE	1.4M	3.6M
3	DESIGN CLEARANCE FOR SAFETY (HORIZONTAL) DSH1	2.9M	4.6M
4	DESIGN CLEARANCE FOR SAFETY (VERTICAL) DSH1	3.8M	5.5M
5	INSULATION HEIGHT (PEDESTRIAN ACCESS)	2.4M	2.4M
6	SAFETY DISTANCE (FROM NGC SAFETY RULES)	1.4M	3.1M
7	MEWP DESIGN CLEARANCE FOR SAFETY (HORIZONTAL) DSH2	4.9M	6.6M
8	MEWP DESIGN CLEARANCE FOR SAFETY (VERTICAL) DSH2	5.8M	7.5M

- NOTES:
- ALL DIMENSIONS ARE IN MILLIMETERS.
 - 400kV CABLES SHALL BE INSTALLED DIRECTLY IN GROUND. 132kV CABLES SHALL BE INSTALLED IN TROUGHS
 - THE POSITIONING OF THE NEW TOWER HAS BEEN PROSCRIBED BY NATIONAL GRID'S CONTRACTOR. THE POSITION AND EFFECTS OF THIS ON THE TOWER STRUCTURE, FOUNDATIONS OR CONNECTIONS, INCLUDING ADHERENCE TO CLEARANCES HAS NOT BEEN ASSESSED IN ANY WAY BY WSP.

- LEGEND:
- PI — POST INSULATOR
 - ESW — EARTHING SWITCH
 - SA — SURGE ARRESTER
 - CSE — CABLE SEALING END
 - REMOVED EQUIPMENT
 - NEW EQUIPMENT
 - CONSTRUCTION SITE BOUNDARY

ASSOCIATED DRAWINGS:
PDD-33494-LAY-022 — PROPOSED CLIFOR SEALING END COMPOUND ELEVATION



Rev	Description	Drawn	Checked	Approved	Date	
P6	DIMENSION ADDED		SPS	SF	CN	17.02.20
P5	BOUNDARIES UPDATED		HW	SF	CN	03.02.20
P4	TOWER 42C027 RELOCATED AS INSTRUCTED BY NG.		MAC	SF	CN	23.01.20
P3	OHL MEASUREMENTS ADDED		CM	JO	MR	04.11.19
P2	OHL MEASUREMENTS ADDED		CM	JO	MR	24.10.19
P1	CABLE ROUTES CORRECTED, FENCE ADDED, CABLE ROUTES DETAIL ADDED		SV	JO	MR	02.07.19
PD	FIRST ISSUE		SV	JO	MR	05.06.19

nationalgrid

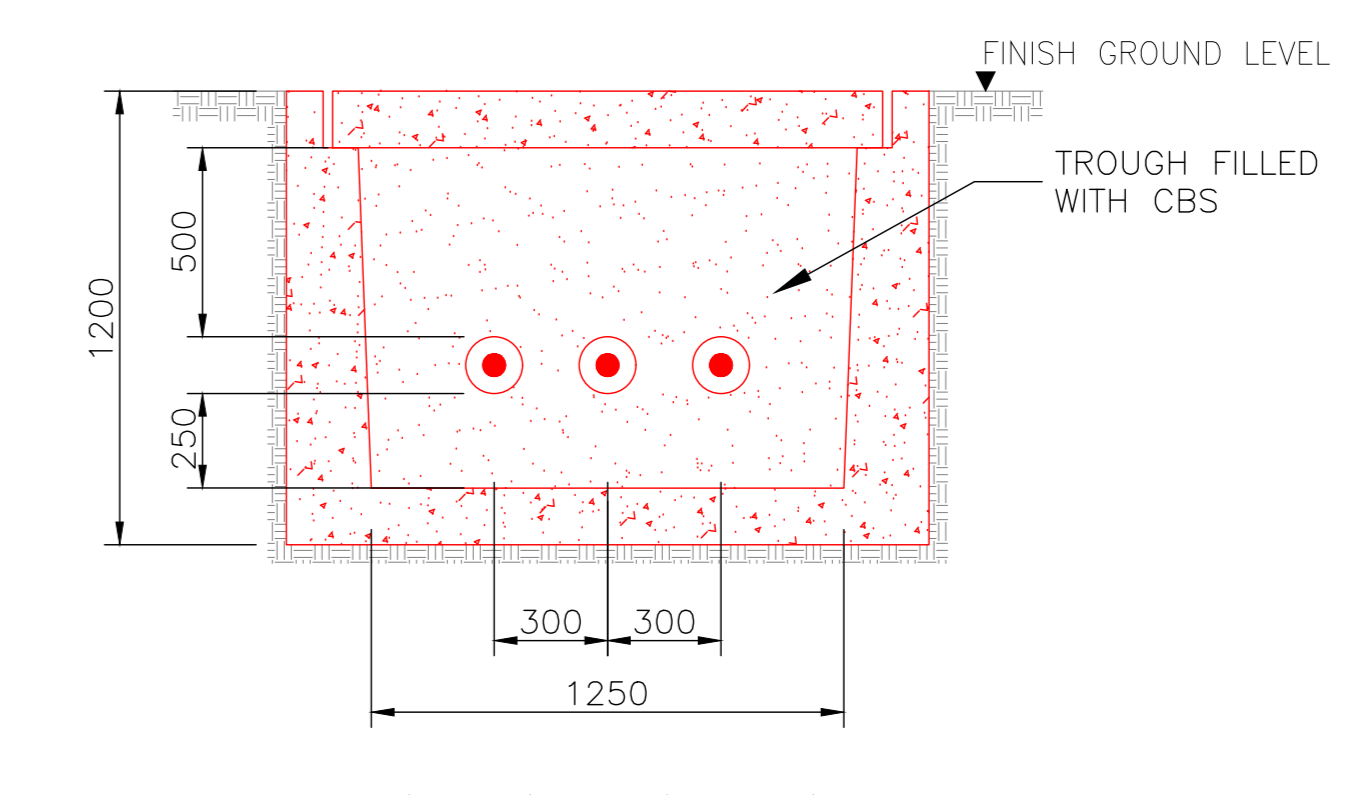
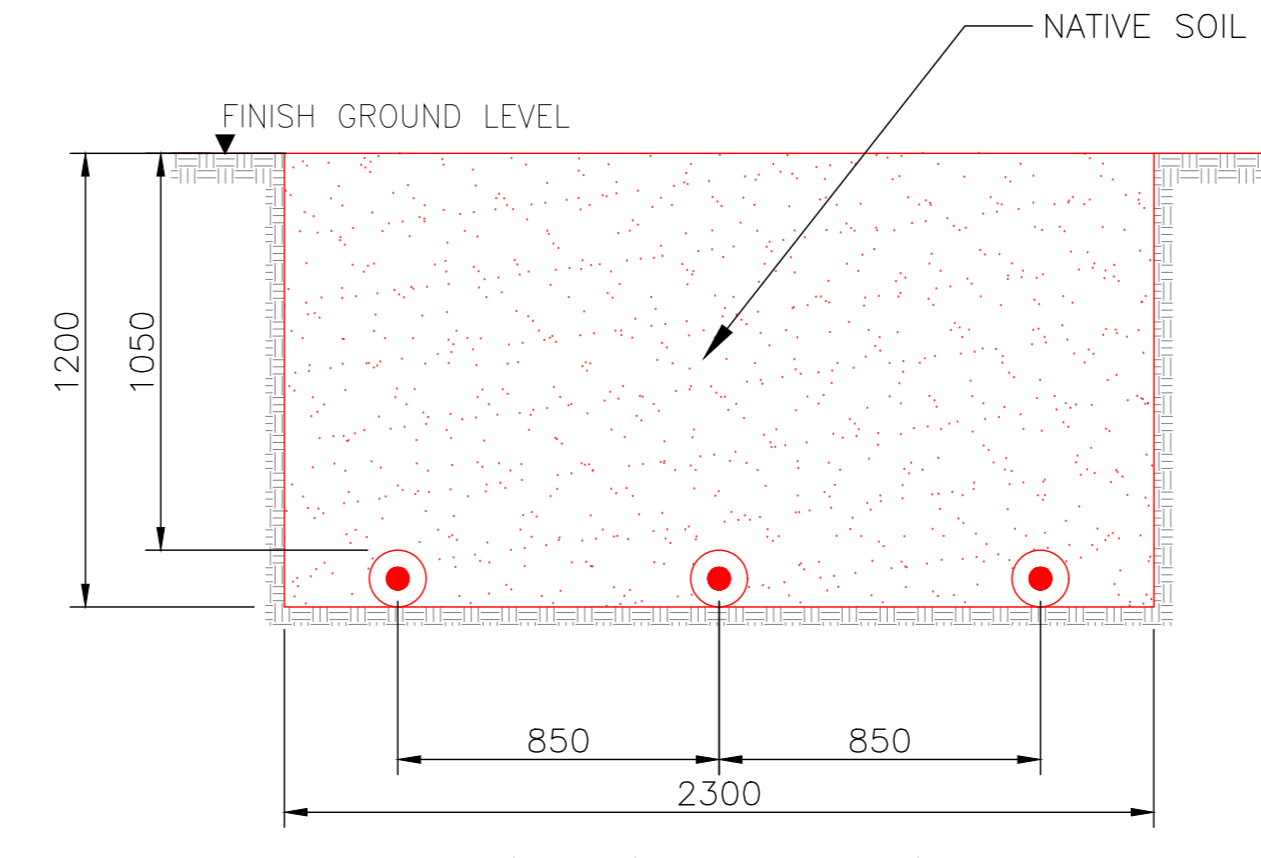
Master Scheme No: 33494 Sub-Scheme No: EAST SITE Site: SNOWDONIA VIP

Figure 2.13:
PROPOSED CLIFOR SEALING END COMPOUND LAYOUT

Created by:	Date:	Checked by:	Date:	Approved by:	Date:
SV	05/06/19	JO	05/06/19	MR	05/06/19

Development Eng: James Buckley Document Type: LAY Scale: 1:200 Format: A0 Sheet(s): 1 OF 1 Rev: P6

FEED Document Number:
PDD-33494-LAY-021



A B C D E F G H I J K L M N O P Q