



- Key:**
- Sheet Extent
  - Project Boundary
  - Land In Respect Of Which Rights Only Are Being Created

**Notes:**  
The common seal of National Grid Electricity Transmission PLC was affixed

on the 14 day of October 2021

in the presence of:



  
(Member of the Board Sealing Committee and Authorised Signatory)

Dated 14/10/2021

**Location:**  
Land from Coldharbour Lane, SW9 8RP to Orpheus Street, Denmark Hill, SE5 8RW, London


Coordinate System: British National Grid  
Projection: Transverse Mercator  
Datum: OSGB 1936

**Coords:** 532,328 176,099

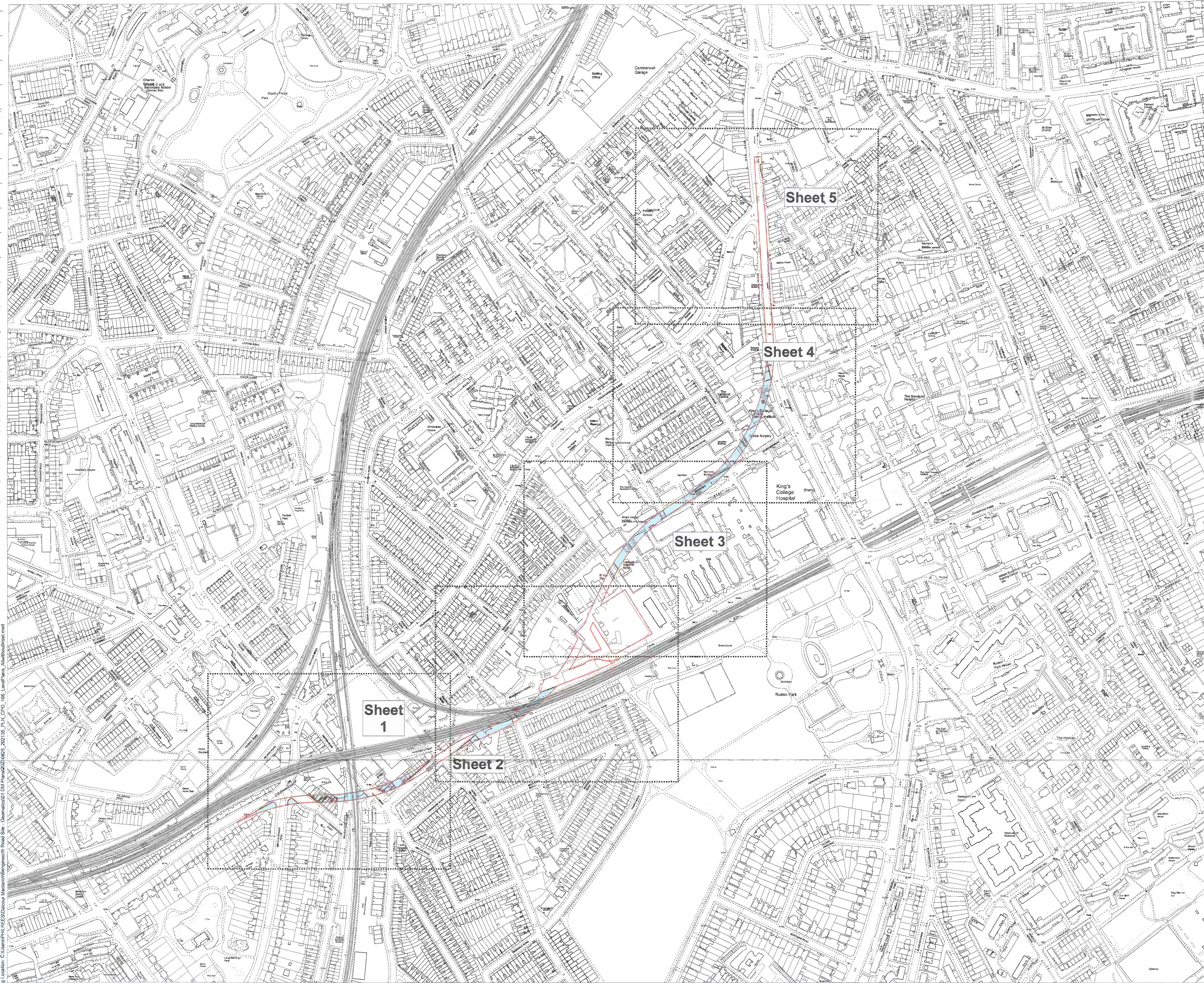
**Drawing No:** 202135\_PLN\_CPO\_166.0

Rev	Date	Description
-	14.10.2021	First Issue

**Drawn:** PR  
**Approved:** DJ/OK  
**Sheet No:** 1 of 1  
**Sheet Size:** A1




The information contained in this document is confidential and protected by copyright. The use, copying or disclosure to a third party, either wholly or in part, except with the written permission of, and in the manner prescribed by National Grid (Electricity) constitutes an infringement of copyright. Dalcour Maclaren does not warrant that this document is definitive nor free of error and does not accept liability for any loss caused or arising from reliance upon information provided herein. Although our best efforts have been made to ensure the accuracy of these plans, all measurements must be confirmed on site. BASED UPON THE ORDINANCE SURVEY MAP WITH THE SANCTION OF THE CONTROLLER OF HM STATIONERY OFFICE. CROWN COPYRIGHT RESERVED. © S LICENCE No. 10002424



Drawing Location: C:\Users\PHIL\OneDrive\Documents\Maparam\Bengeworth Road Site - Geomatics\01 DM Plans\2021\35\_PLN\_CPO\_166\_LandPlans\_A1\withoutseal.mxd





- Key:**
- Sheet Extent
  - Project Boundary
  - Land In Respect Of Which Rights Only Are Being Created

**Notes:**

The common seal of National Grid Electricity Transmission PLC was affixed

on the 14 day of October 2021



in the presence of:

(Member of the Board Sealing Committee and Authorised Signatory)

Dated 14/10/2021

**Location:**

Land from Coldharbour Lane, SW9 8RP to Herne Hill Road, SE24 0HJ, London

Coordinate System: British National Grid  
Projection: Transverse Mercator  
Datum: OSGB 1936

Coords: 531,910 175,692

Drawing No: 202135\_PLN\_CPO\_166.1

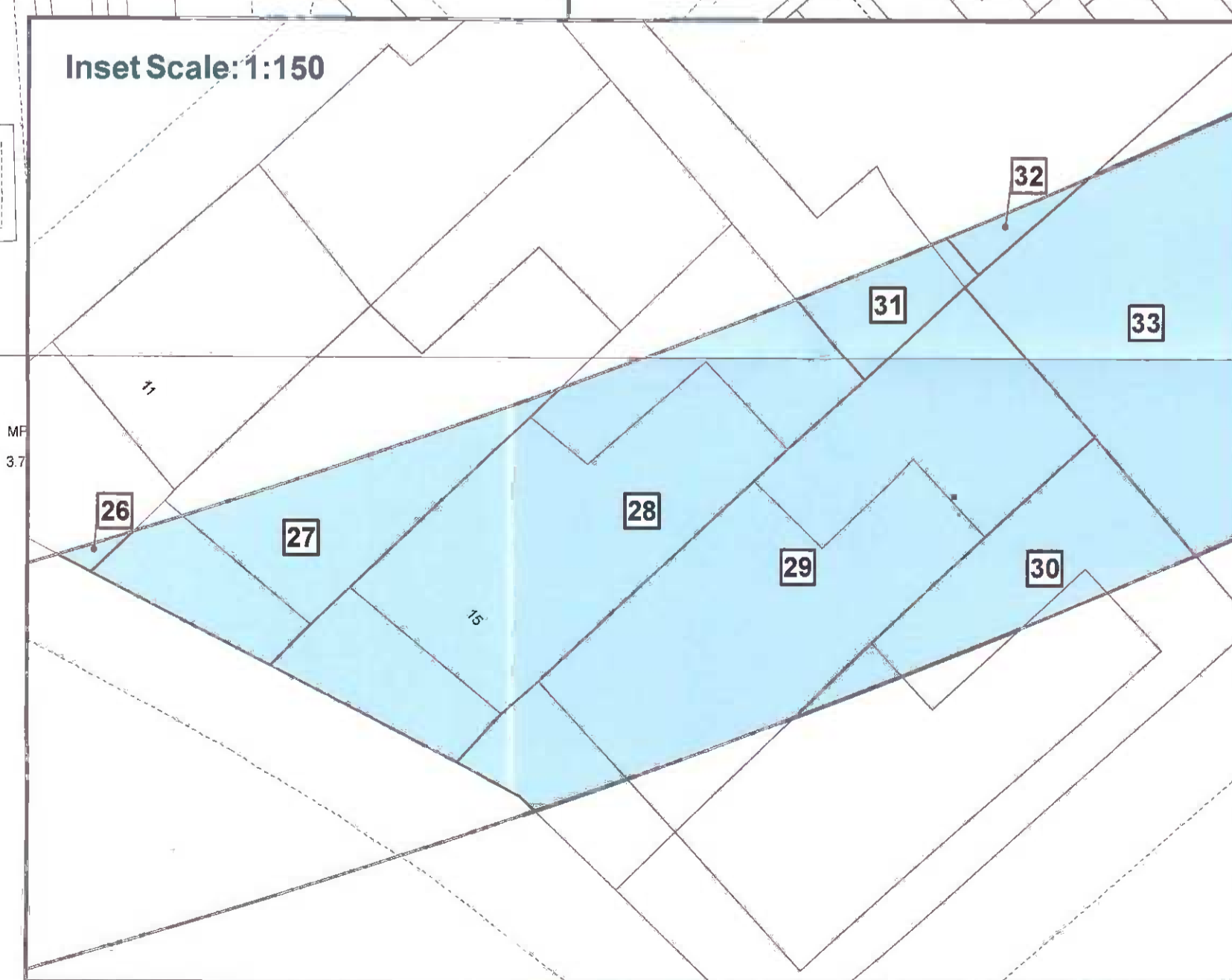
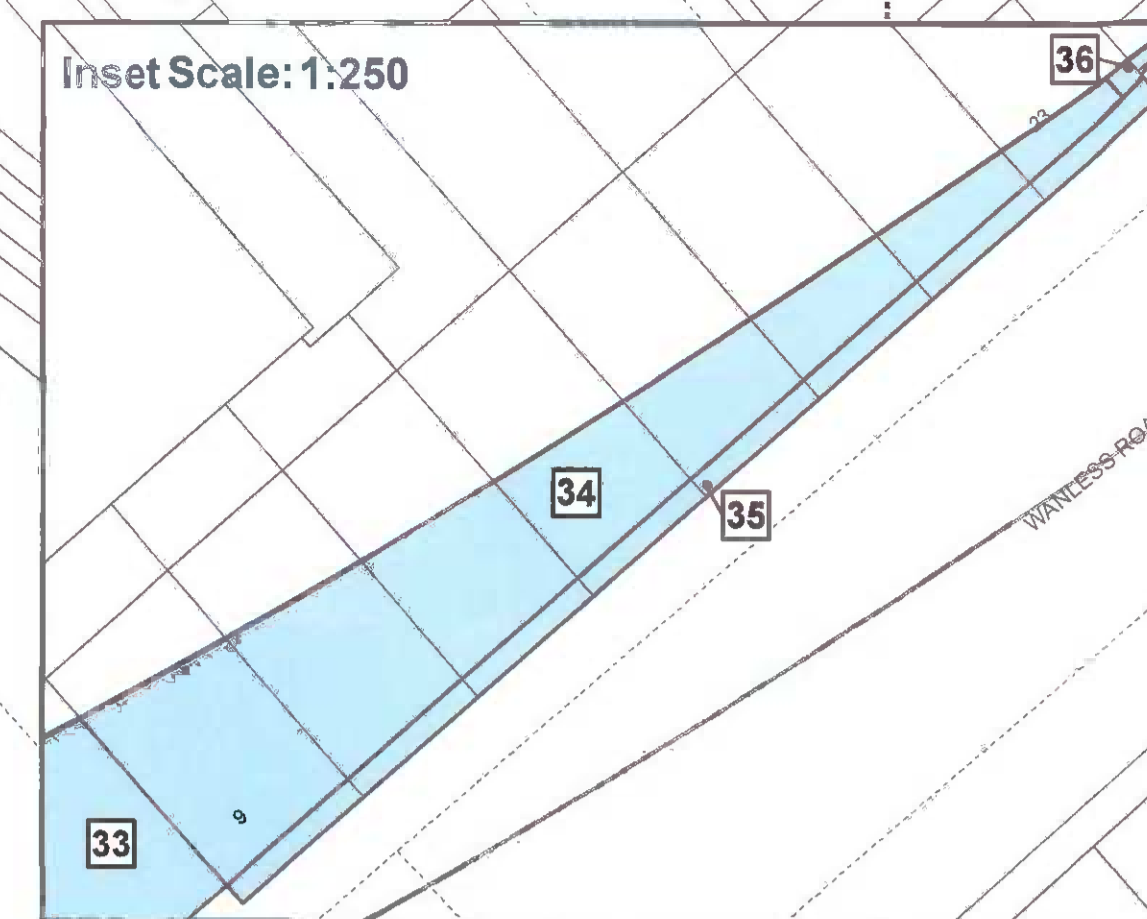
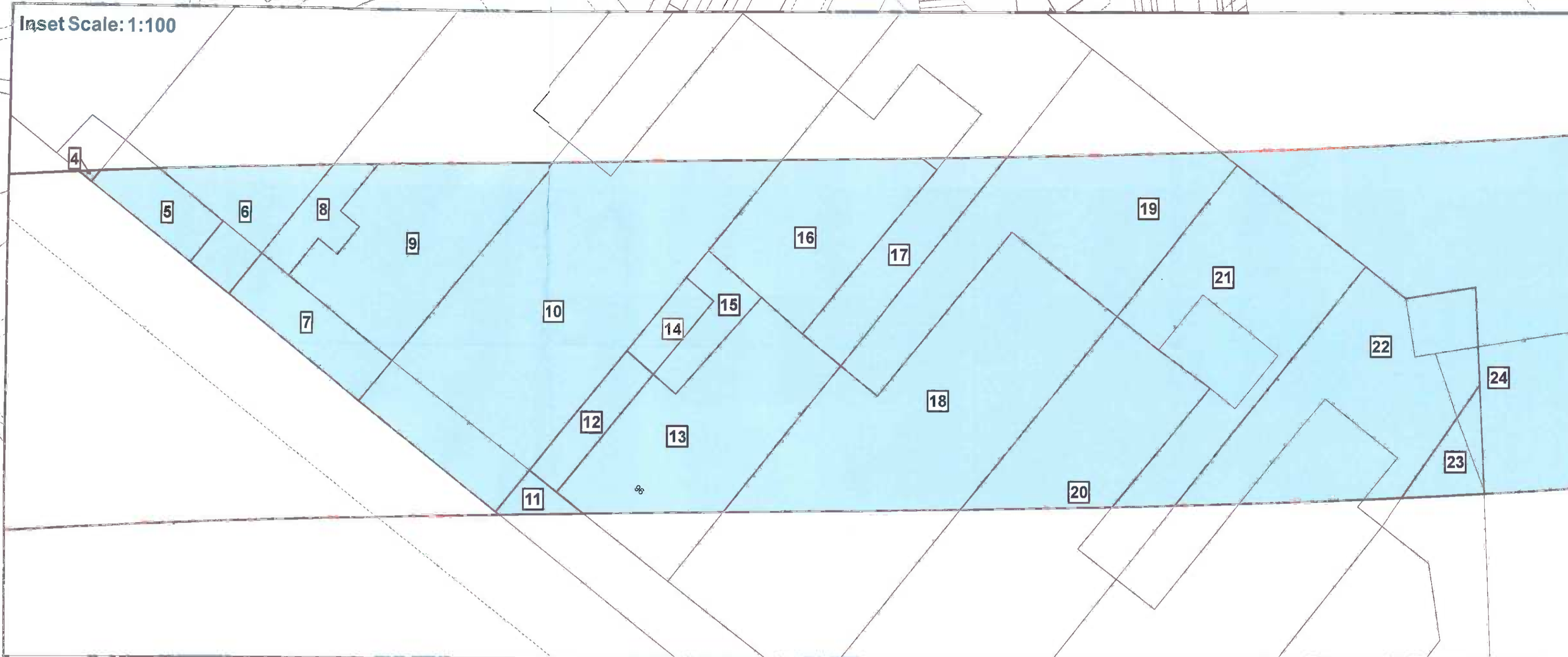
Rev	Date	Description
-	14.10.2021	First Issue

Drawn:	PR
Approved:	DJ/OK
Sheet No:	1 of 5
Sheet Size:	A1



**nationalgrid**

The information contained in this document is confidential and protected by copyright. The use, copying or disclosure to a third party, either wholly or in part, except with the written permission of, and in the manner prescribed by National Grid (Electricity) constitutes an infringement of copyright. Dalcour MacLaren does not warrant that this document is definitive nor free of error and does not accept liability for any loss caused or arising from reliance upon information provided herein. Although our best efforts have been made to ensure the accuracy of these plans, all measurements must be confirmed on site. BASED UPON THE ORDINANCE SURVEY MAP WITH THE SANCTION OF THE CONTROLLER OF HM STATIONERY OFFICE. CROWN COPYRIGHT RESERVED. © OS LICENCE No 10002424



Drawing Location: C:\Users\PHILIP\Documents\Bengeworth Road Site - Geomatics\01 DM Plans\20210825\_202135\_PLN\_CPO\_166\_LandPlans\_Sheet1.mxd





- Key:**
- Sheet Extent
  - Project Boundary
  - Land In Respect Of Which Rights Only Are Being Created

**Notes:**  
The common seal of National Grid Electricity Transmission PLC was affixed

on the 14 day of October 2021

in the presence of:  
  
(Member of the Board Sealing Committee and Authorised Signatory)

Dated 14/10/2021

**Location:**  
Land from Herne Hill Road, SE24 0HJ to Coldharbour Industrial Estate, SE5 9RS, London

Coordinate System: British National Grid  
Projection: Transverse Mercator  
Datum: OSGB 1936

**Coords:** 532,245 175,819  
**Drawing No:** 202135\_PLN\_CPO\_166.2

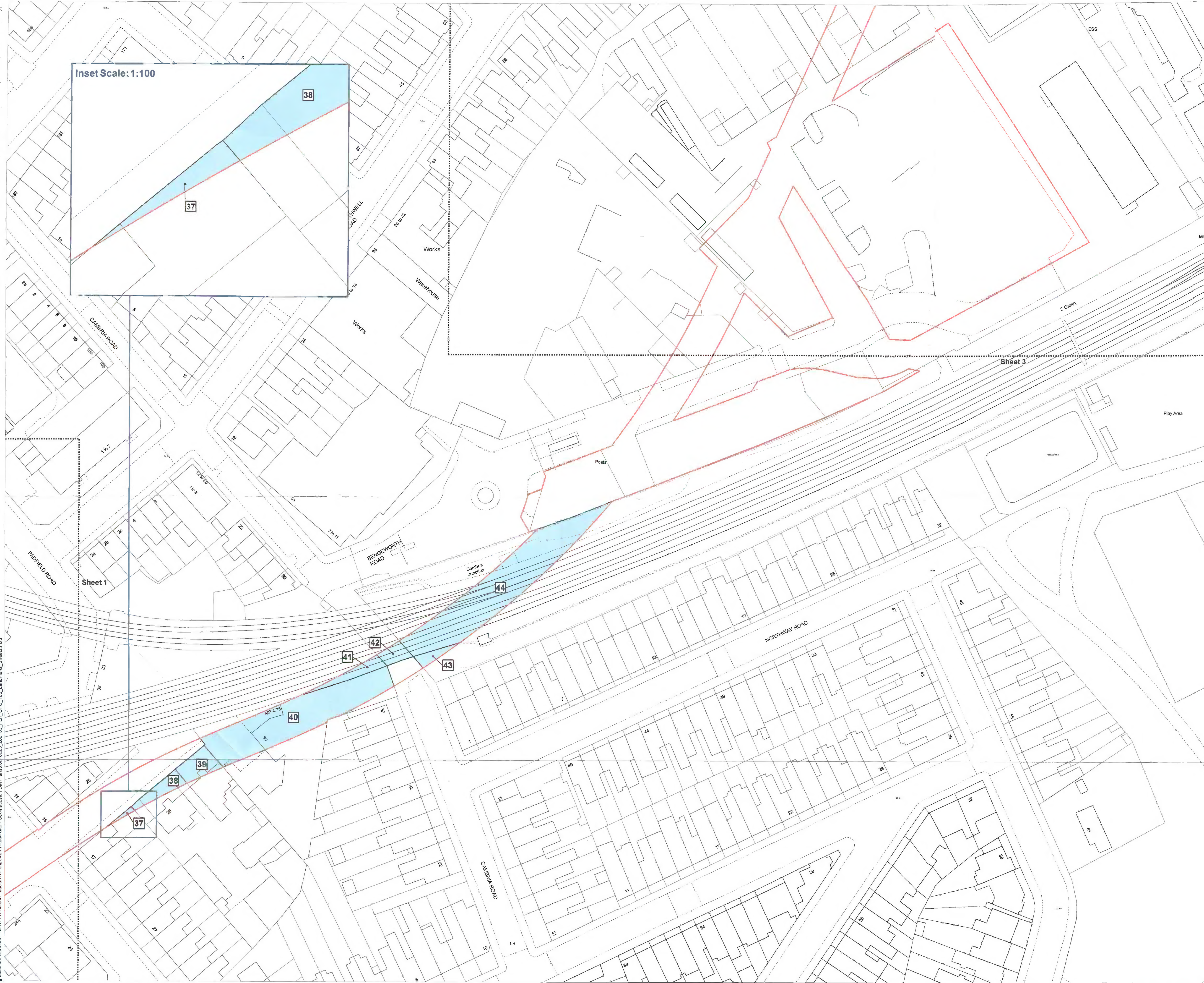
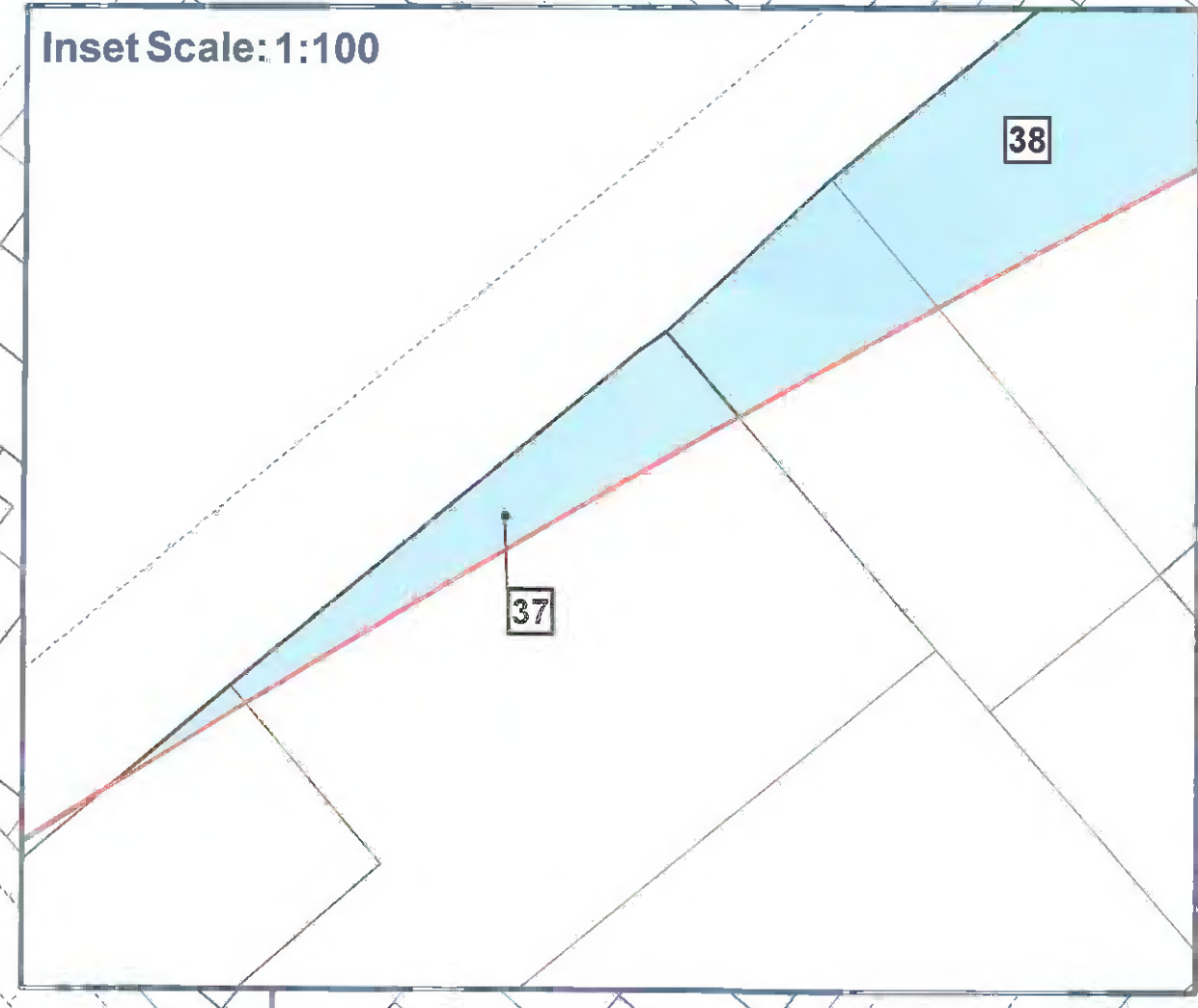
Rev	Date	Description
-	14.10.2021	First Issue

**Drawn:** PR  
**Approved:** DJ/OK  
**Sheet No:** 2 of 5  
**Sheet Size:** A1



**nationalgrid**

The information contained in this document is confidential and protected by copyright. The use, copying or disclosure to a third party, either wholly or in part, except with the written permission of, and in the manner prescribed by National Grid (Electricity) constitutes an infringement of copyright. Dalcour MacLaren does not warrant that this document is definitive nor free of error and does not accept liability for any loss caused or arising from reliance upon information provided herein. Although our best efforts have been made to ensure the accuracy of these plans, all measurements must be confirmed on site. BASED UPON THE ORDNANCE SURVEY MAP WITH THE SANCTION OF THE CONTROLLER OF HM STATIONERY OFFICE. CROWN COPYRIGHT RESERVED. © OS LICENCE NO.10002424



Drawing Location: C:\Users\PHILIP\Documents\Bengeworth Road Site - Geomatics\01 DM Plans\2021\35 PLN\_CPO\_166\_LandPlans\_Sheet2.mxd







- Key:**
- Sheet Extent
  - Project Boundary
  - Land In Respect Of Which Rights Only Are Being Created

**Notes:**  
The common seal of National Grid Electricity Transmission PLC was affixed

on the 14 day of October 2021



in the presence of:  
  
(Member of the Board Sealing Committee and Authorised Signatory)

Dated 14/10/2021

**Location:**  
Land from Coldharbour Industrial Estate, SE5 9RS to Bessemer Road, SE5 9PJ, London

Coordinate System: British National Grid  
Projection: Transverse Mercator  
Datum: OSGB 1936

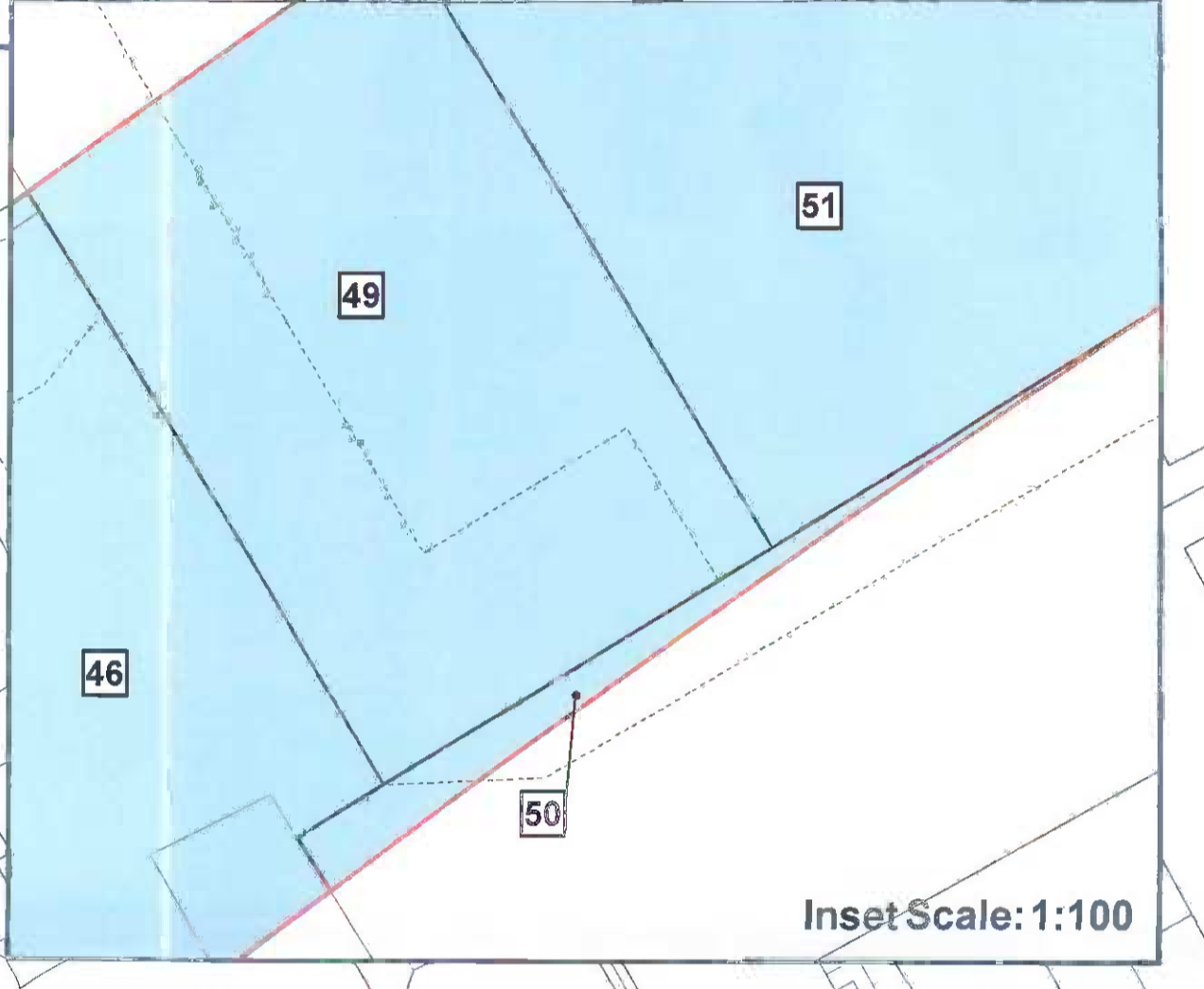
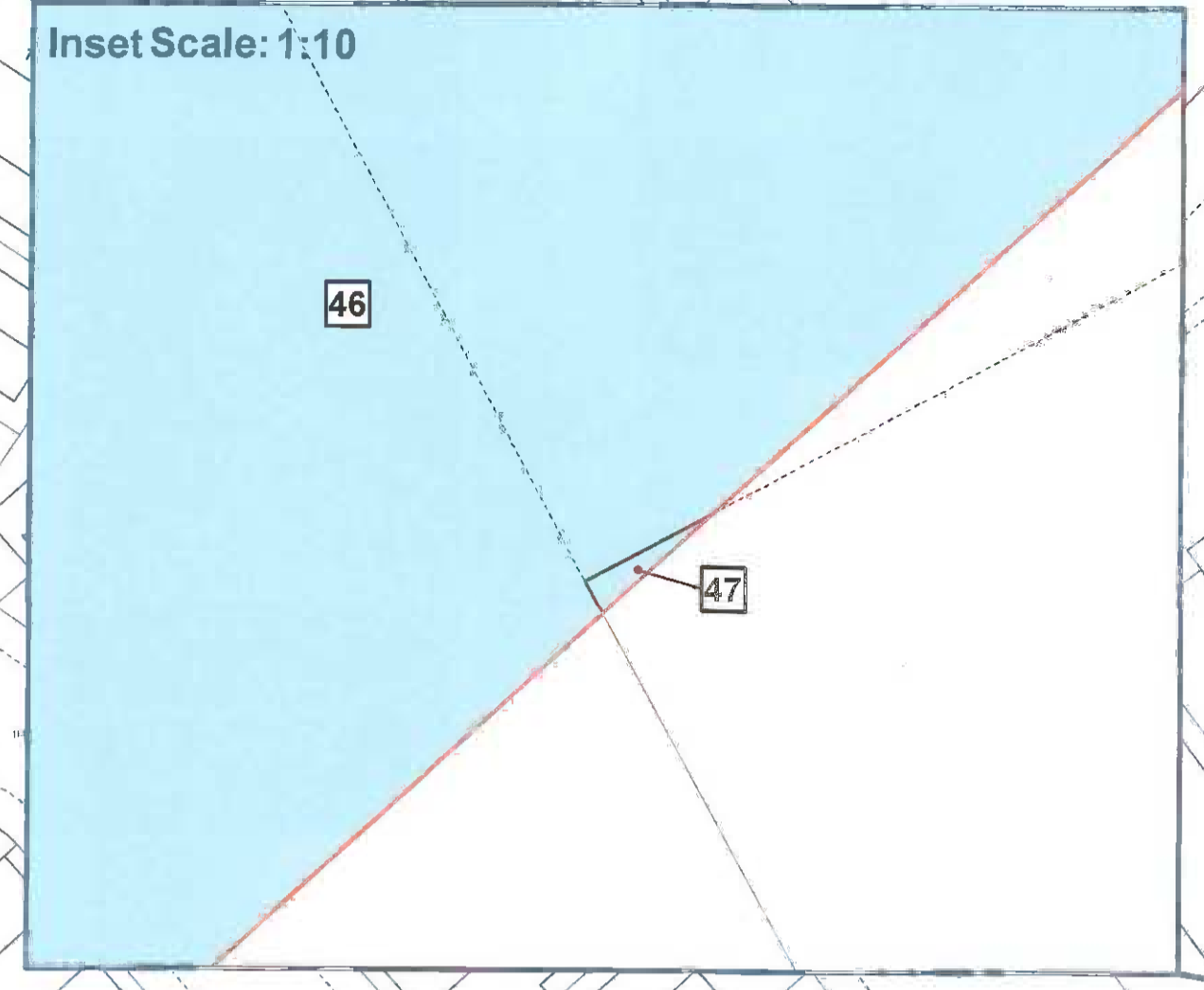
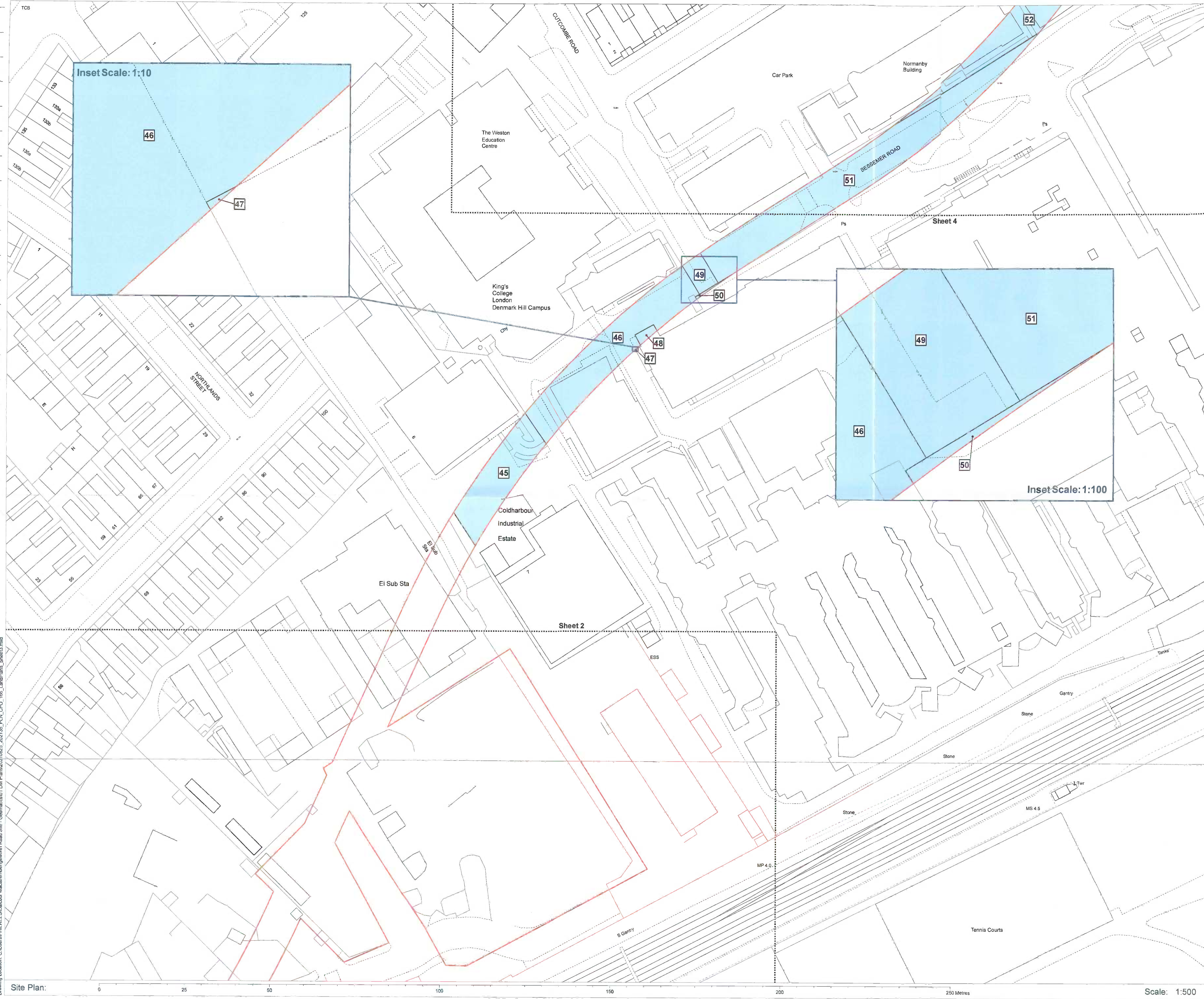
**Coords:** 532,375 176,003  
**Drawing No:** 202135\_PLN\_CPO\_166.3

Rev	Date	Description
-	14.10.2021	First Issue

<b>Drawn:</b>	PR
<b>Approved:</b>	DJ/OK
<b>Sheet No:</b>	3 of 5
<b>Sheet Size:</b>	A1



The information contained in this document is confidential and protected by copyright. The use, copying or disclosure to a third party, either wholly or in part, except with the written permission of, and in the manner prescribed by National Grid (Electricity) constitutes an infringement of copyright. Dalcour MacLaren does not warrant that this document is definitive nor free of error and does not accept liability for any loss caused or arising from reliance upon information provided herein. Although our best efforts have been made to ensure the accuracy of these plans, all measurements must be confirmed on site. BASED UPON THE ORDINANCE SURVEY MAP WITH THE SANCTION OF THE CONTROLLER OF HM STATIONERY OFFICE. CROWN COPYRIGHT RESERVED © OS LICENCE No 10002424



Drawing Location: C:\Users\PHIL\REES\Dalcour MacLaren\Bengeworth Road Site - Geomatics\01 DM Plans\2021\0823\_202135\_PLN\_CPO\_166\_LandPlans\_Sheet3.mxd





**Key:**

- Sheet Extent
- Project Boundary
- Land In Respect Of Which Rights Only Are Being Created

**Notes:**

The common seal of National Grid Electricity Transmission PLC was affixed

on the 14 day of October 2021



in the presence of:

(Member of the Board Sealing Committee and Authorised Signatory)

Dated 14/10/2021

**Location:**  
Land from Bessemer Road, SE5 9PJ to Marina House, Denmark Hill, London

Coordinate System: British National Grid  
Projection: Transverse Mercator  
Datum: OSGB 1936

**Coords:** 532,505 176,229

**Drawing No:** 202135\_PLN\_CPO\_166.4

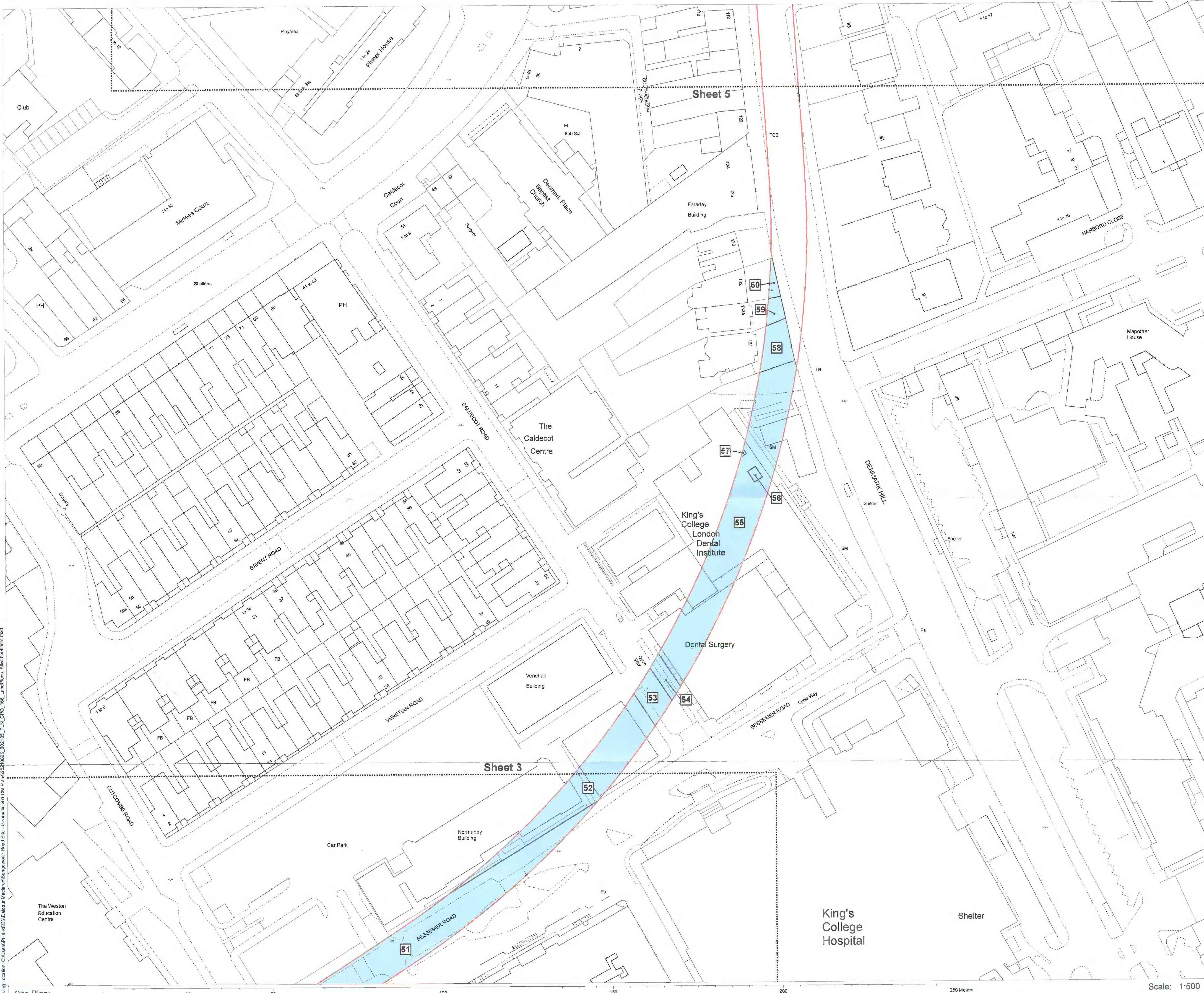
Rev	Date	Description
-	14.10.2021	First Issue

**Drawn:** PR  
**Approved:** DJJOK  
**Sheet No:** 4 of 5  
**Sheet Size:** A1



**nationalgrid**

The information contained in this document is confidential and protected by copyright. The use, copying or disclosure to a third party, either wholly or in part, except with the written permission of, and in the manner prescribed by National Grid (Electricity) constitutes an infringement of copyright. Dalcour Maclaren does not warrant that this document is definitive nor free of error and does not accept liability for any loss caused or arising from reliance upon information provided herein. Although our best efforts have been made to ensure the accuracy of these plans, all measurements must be confirmed on site. BASED UPON THE ORDNANCE SURVEY MAP WITH THE SANCTION OF THE CONTROLLER OF HIS STATIONERY OFFICE. CROWN COPYRIGHT RESERVED. © OS LICENCE No 10002424



Drawing Location: C:\Users\PHILIPRES\Documents\Bengeworth Road Site - Coordinated\01 DM Plans\2021\05 PLN\_CPO\_166\_LandPlans\_A1\Sheet4.dwg





- Key:**
- Sheet Extent
  - Project Boundary
  - Land In Respect Of Which Rights Only Are Being Created

**Notes:**  
The common seal of National Grid Electricity Transmission PLC was affixed

on the 14 day of October 2021

MEMBER OF THE BOARD SEALING COMMITTEE



in the presence of:  
  
(Member of the Board Sealing Committee and Authorised Signatory)

Dated 14/10/2021

**Location:**  
Land from Marina House to Orpheus Street, Denmark Hill, SE5 8RW, London

Coordinate System: British National Grid  
Projection: Transverse Mercator  
Datum: OSGB 1936

**Coords:** 532,537 176,491  
**Drawing No:** 202135\_PLN\_CPO\_166.5

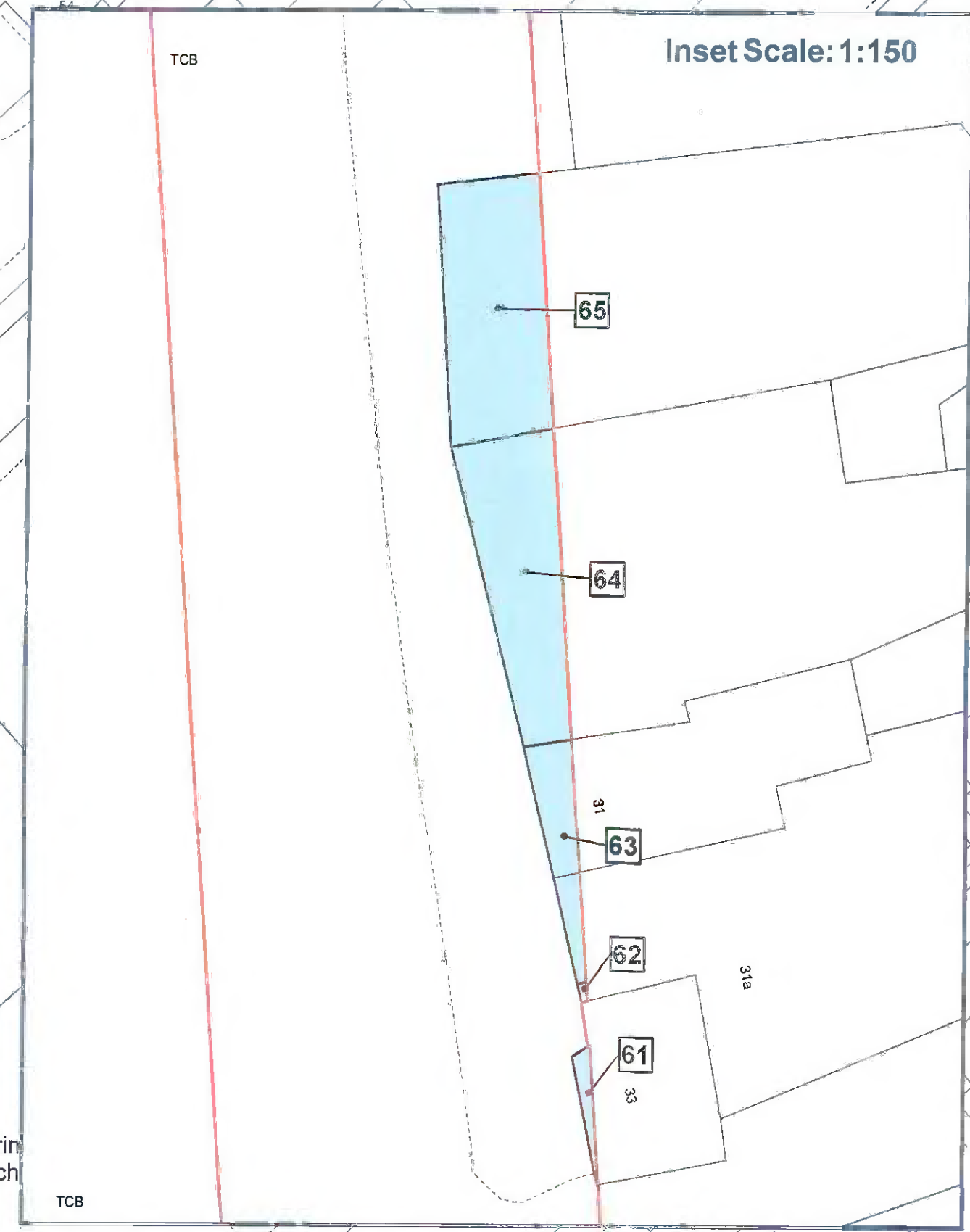
Rev	Date	Description
-	14.10.2021	First Issue

<b>Drawn:</b>	PR
<b>Approved:</b>	DJ/OK
<b>Sheet No:</b>	5 of 5
<b>Sheet Size:</b>	A1



**nationalgrid**

The information contained in this document is confidential and protected by copyright. The use, copying or disclosure to a third party, either wholly or in part, except with the written permission of, and in the manner prescribed by National Grid (Electricity) constitutes an infringement of copyright. Dalcour Maclaren does not warrant that this document is definitive nor free of error and does not accept liability for any loss caused or arising from reliance upon information provided herein. Although our best efforts have been made to ensure the accuracy of these plans, all measurements must be confirmed on site. BASED UPON THE ORDINANCE SURVEY MAP WITH THE SANCTION OF THE CONTROLLER OF HM STATUTORY OFFICE. CROWN COPYRIGHT RESERVED. © OS LICENCE No 10002424



Drawing Location: C:\Users\PHILIP\RES\Dalcour Maclaren\Bengeworth Road Site - Geomatics\01 DM Plans\202135\_PLN\_CPO\_166\_LandPlans\_Sheets.mxd