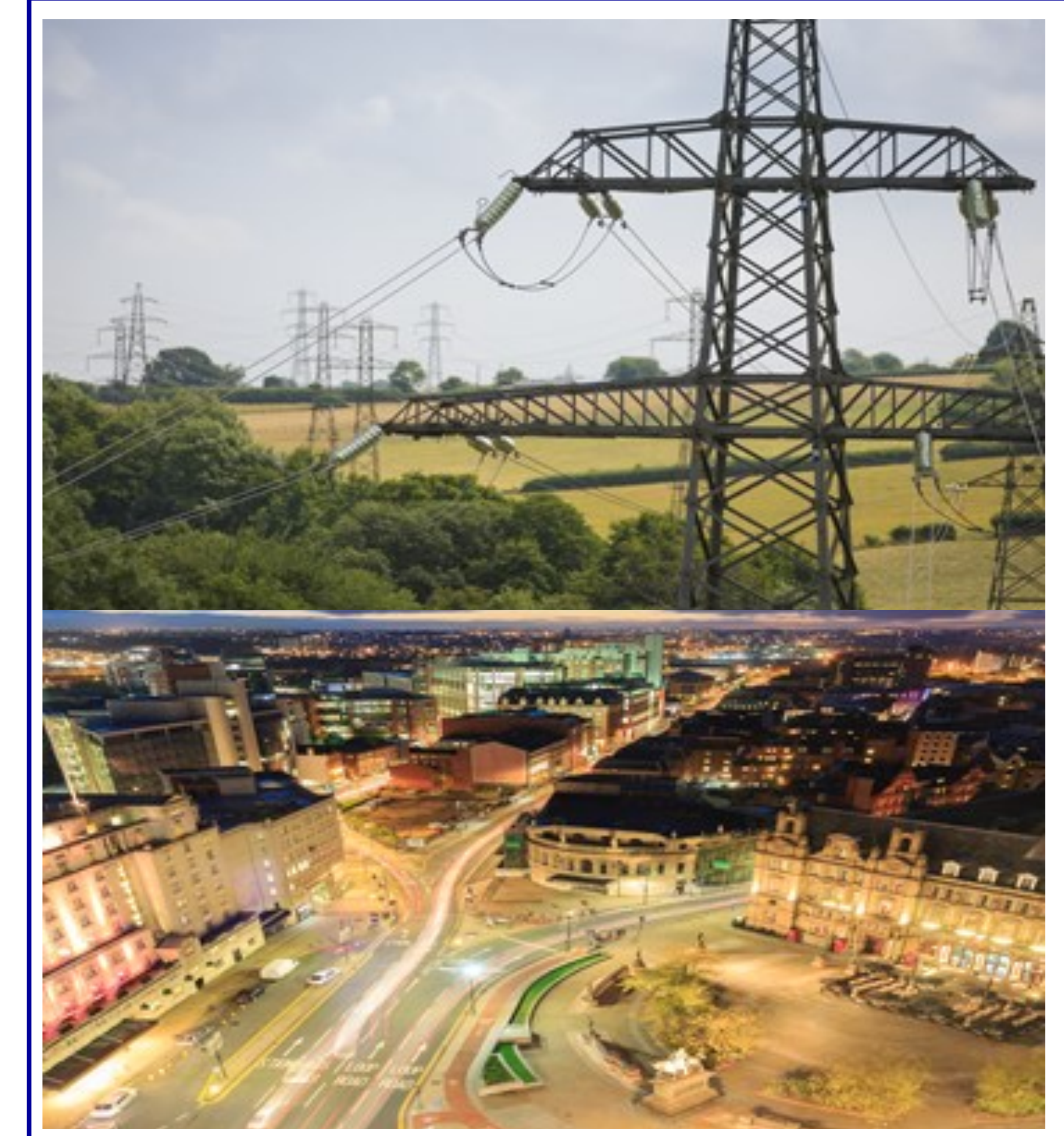
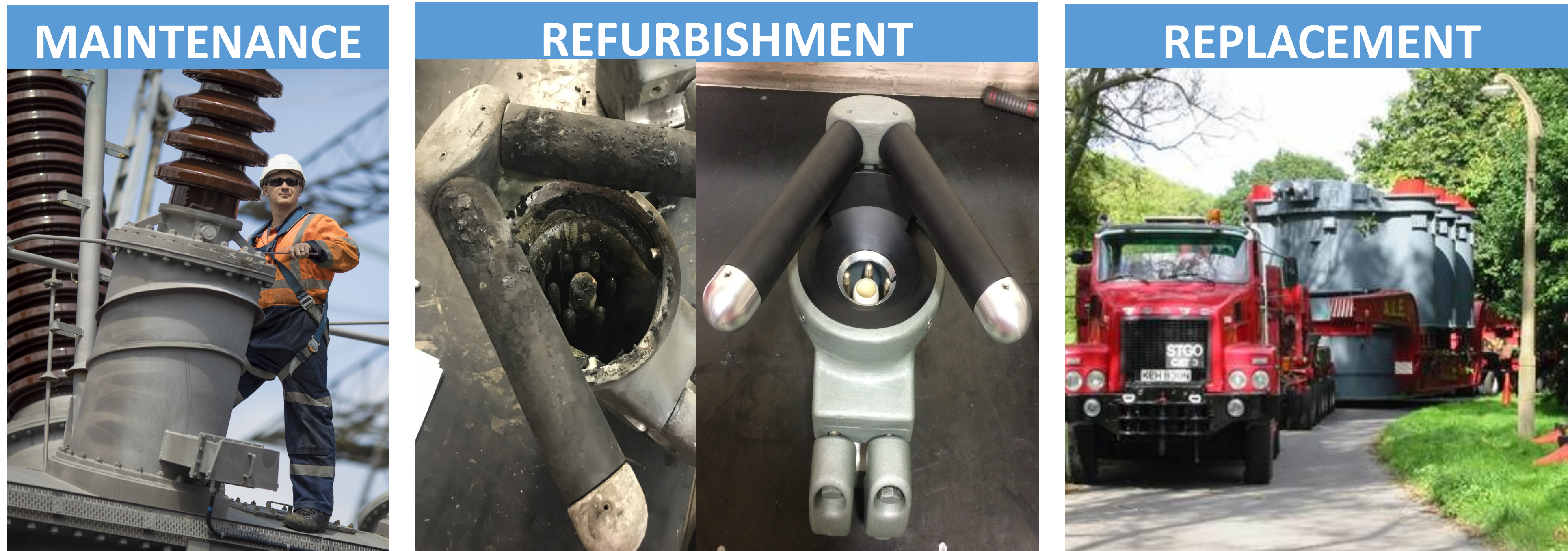
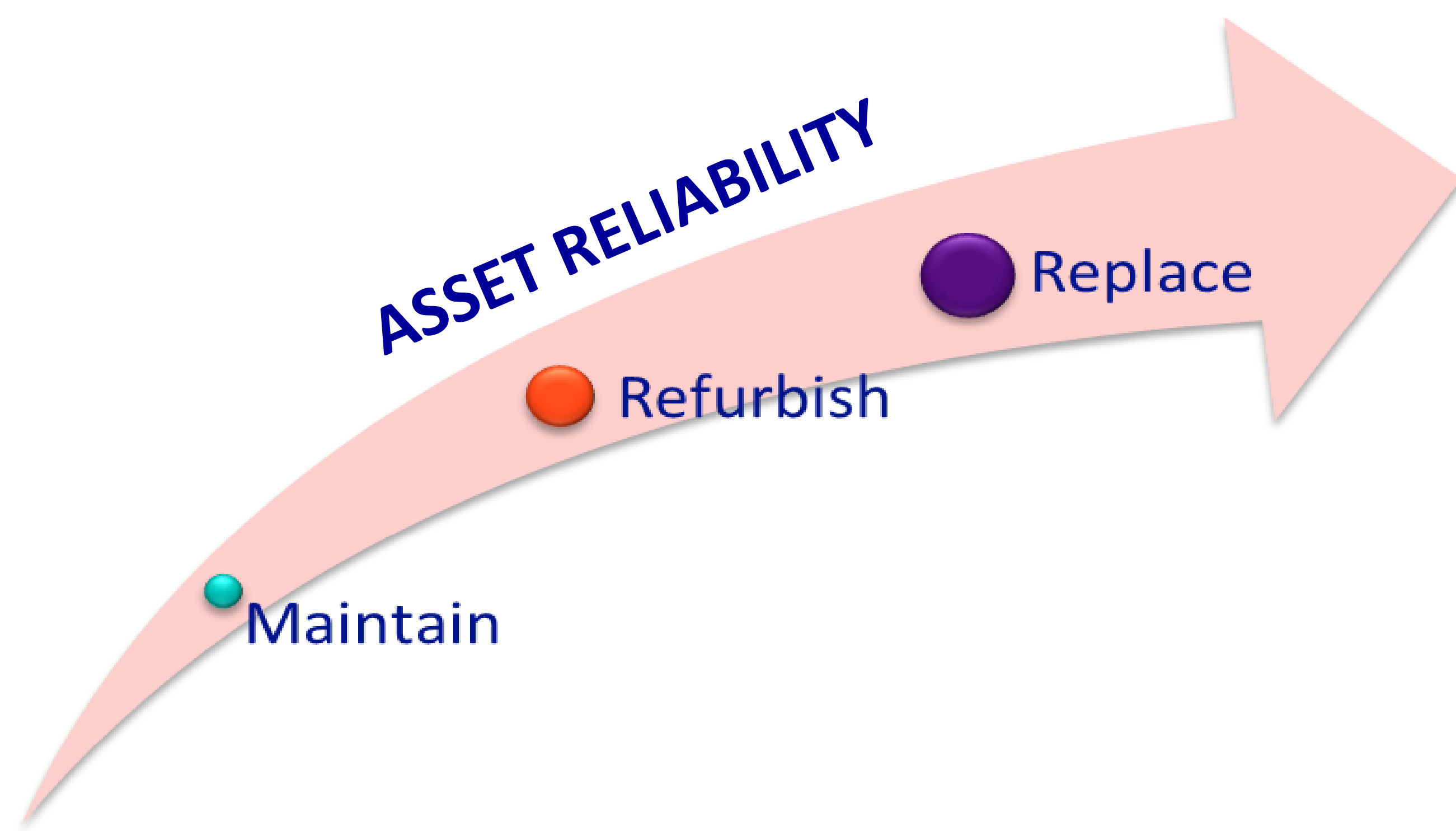


Interventions

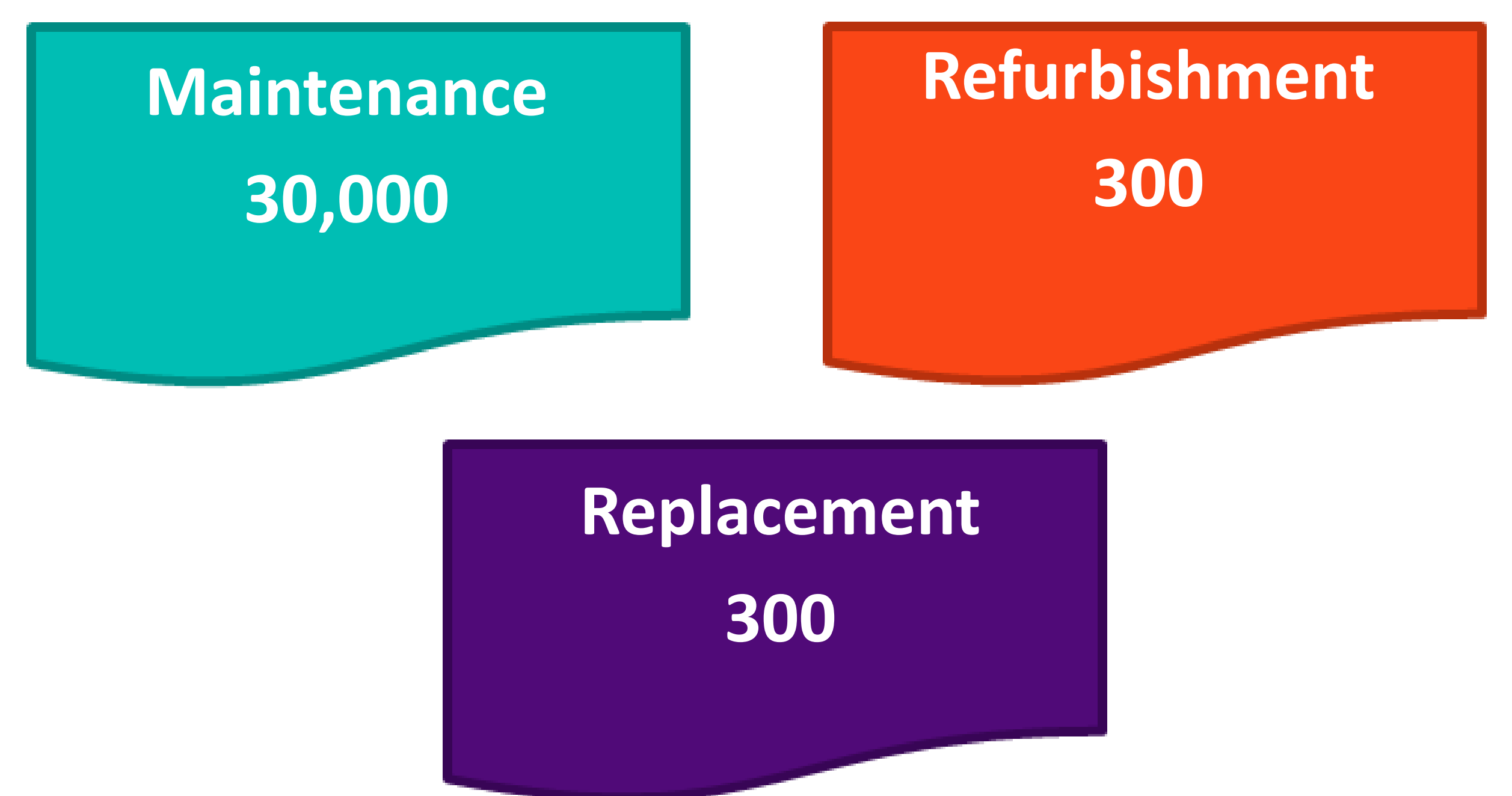
Interventions are some of the activities we undertake to manage our assets, to reduce their risk of failure



How do interventions impact reliability?



How often do we intervene on assets in a year (circa)?



Our approach

Right intervention at the right time

Replace asset before end of life

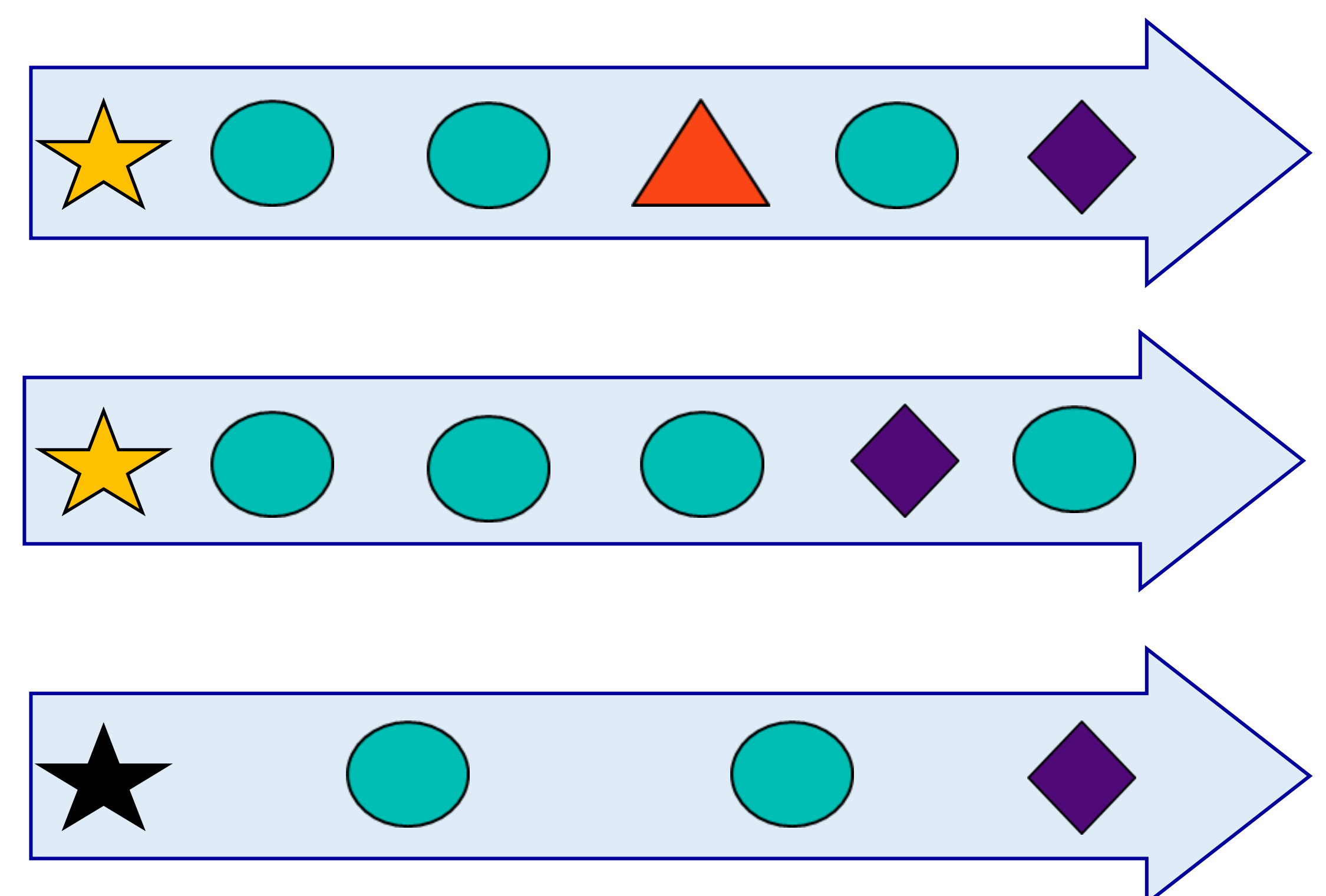
Minimise Whole Life Cost

Gather asset condition information

Continuously improve approach

Account for change in consequence

Illustration of intervention considerations



- Key
- New asset (£££)
 - New asset, alternative technology (££££)
 - Maintenance (£)
 - Refurbishment (££)
 - Replacement (££££)