

LIONLINK:

「A vital step towards an
integrated North Sea grid」

LionLink Project Update Webinar – March 2025

Housekeeping

- ✓ Attendees will be muted
- ✓ Cameras will be turned off
- ✓ Recording used for internal notetaking purposes
- ✓ Post questions via Q&A tab
- ✓ Questions published in Q&A tab



Agenda

Item

Project overview

Landfall decision process

Selected landfall site

Next Steps

Statutory consultation

Project timeline

Q&A

Project overview

What is LionLink?



Link the UK and Dutch electricity grids - connecting to 2GW of energy generated by offshore wind



Lower energy bills – LionLink is expected to save UK consumers almost £300 million in its first ten years



Strengthen the UK's national energy security – supplying enough energy to power approx. 2.5 million homes



Provide clean, green, renewable energy – carbon savings in the first year is equivalent to 600,000 fewer cars on the road

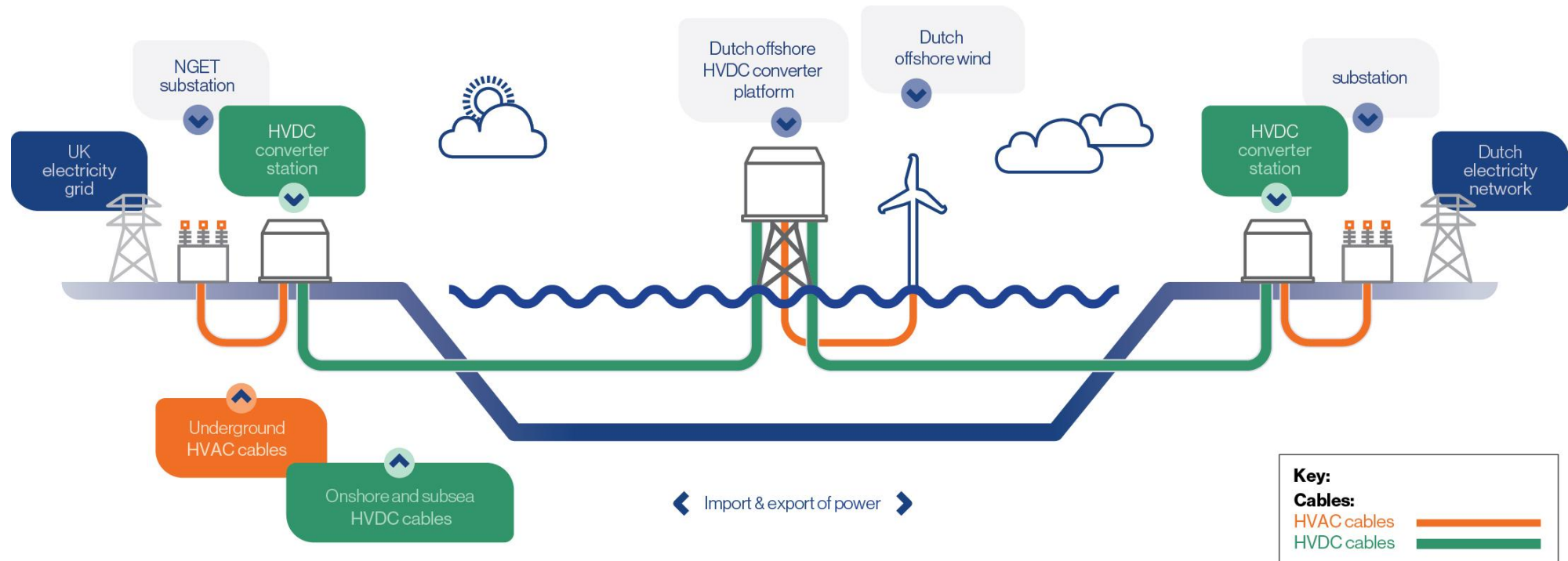


How will LionLink work?

- **Landfall site** - where subsea cables are brought onto land and connected to onshore cables
- **Converter station** - where electricity is transformed so it can feed into the high-voltage grid.
- **Substation** - where connection from the existing electricity grid will be made
- **Underground cabling** - all cables will be subsea or underground

Project overview

Required infrastructure



The landfall decision-making process

Initial site feasibility searches and report 2018 - 2022

First public consultation Late 2022

During this phase, we:

- Identified an alternative landfall Walberswick site
- Identified an alternative onshore cable route north of Southwold

Second public consultation Late 2023

During this phase, we:

- Published Supplementary Non-Statutory Consultation Report
- Summarised our response to feedback, emerging preferences and discounted sites

Preferred option selection February 2025

Ground investigation survey works Summer/Autumn 2024

Seabed surveys Spring/Summer 2024

Shortlisted locations announced March 2024

Selected landfall site

Introducing the selected Landfall Site: Walberswick

After thorough evaluation, Walberswick has been selected as LionLink's landfall site.

The alternative at Southwold has been discounted, meaning no construction will take place in Southwold.

Selected landfall site

Key factors



Reduction in overall disruption to residents, with fewer construction sites and HGV movements. Traffic will also avoid main road into Walberswick, where possible.



Less environmental impact with fewer trees and hedgerows lost, and fewer waterway and utility pipe crossings.

Adverse impacts on Minsmere-Walberswick SPA can be avoided.



Shorter onshore cable route to proposed converter station site (19.9 km) compared to Southwold (32.8km)



Walberswick is **more sustainable coastal location** – less susceptible to coastal erosion and flooding

Selected landfall site

Shortlisted options March 2024

1 converter station search area option

Proposed substation near Friston



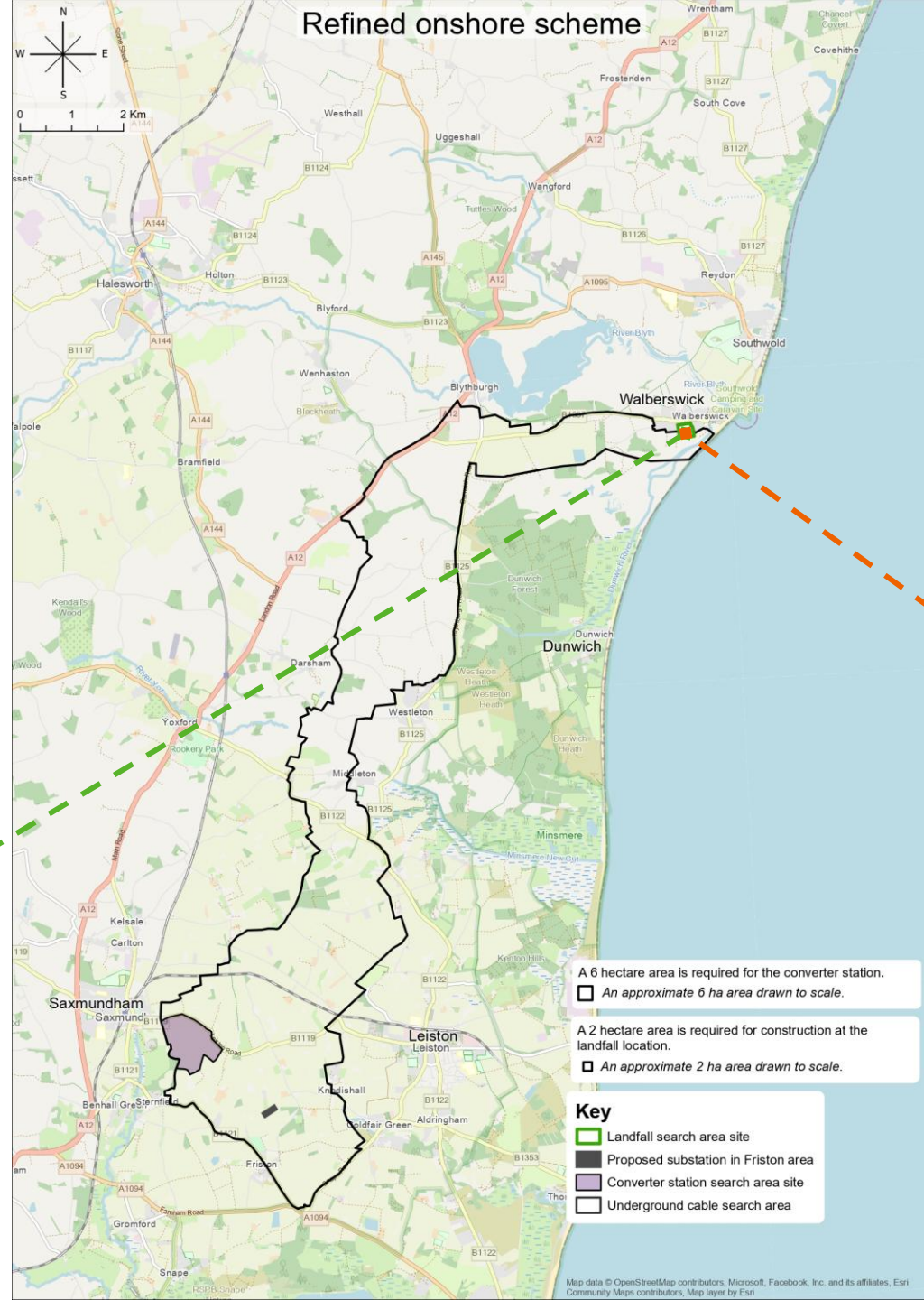
2 landfall options

- A 6 hectare area is required for the converter station.
□ An approximate 6 ha area drawn to scale
 - A 2 hectare area is required for construction at the landfall location.
□ An approximate 2 ha area drawn to scale
- Key**
- Landfall Search Area Sites
 - Proposed Friston Substation
 - Converter Station Search Area Site
 - Onshore Underground Cable Search Area
 - Offshore Subsea Cable Search Area

Map data © OpenStreetMap contributors, Microsoft, Facebook, Inc. and its affiliates, Esri Community Maps contributors, Map layer by Esri

Selected landfall site

Selected landfall February 2025



Selected landfall site

- A 6 hectare area is required for the converter station.
□ An approximate 6 ha area drawn to scale.
 - A 2 hectare area is required for construction at the landfall location.
□ An approximate 2 ha area drawn to scale.
- Key**
- Landfall search area site
 - Proposed substations in Friston area
 - Converter station search area site
 - Underground cable search area

Next steps

Next steps

Over the coming months, we will be undertaking the following activity:

- **Archaeological surveys:** works will start along the cable route and preferred sites to assess archaeological potential of the chosen areas and identify any points of interest. The findings will be included as part of the Environmental Statement (ES).
- **Further surveys:** LiDAR, Seismic, Topography and Borehole/Trial Pit and environmental surveys will all be taking place along the cable route. This will have minimal impact on local communities.
- **Summer newsletter:** we will be issuing further project updates this year, including a community newsletter in the Summer, ahead of our statutory consultation in Autumn/Winter.

Preferred landfall site

2025 Statutory Consultation

Our statutory consultation will take place in Autumn/Winter 2025.

This will be the final opportunity for you to share your feedback before we submit our application

This consultation will provide:

- details of our latest proposals and design
- the findings of our Preliminary Environmental Information Report and proposed mitigation measures
- proposed construction methodology and timetable
- information on community benefits and local initiatives

More information on our statutory consultation will be shared online and via our community newsletter closer to the time.

Looking forward

Project timeline



Getting in touch



0800 083 1787



info@LionLink.nationalgrid.com



Freepost NGV LionLink



nationalgrid.com/LionLink



nationalgrid.com/LionLink

Questions

LIONLINK:

「 A vital step towards an
integrated North Sea grid 」