

## The Great Grid Upgrade

North Humber to High Marnham

# Community newsletter

February 2025



## National Grid is seeking your feedback on our developed proposals for North Humber to High Marnham.

The way we generate electricity in the UK is changing rapidly, and we are transitioning to cheaper, cleaner and more secure forms of energy, like new offshore wind farms. We therefore need to adapt and develop the electricity network to connect new sources of low-carbon energy to homes and businesses.

North Humber to High Marnham is a proposal for a new high voltage overhead electricity transmission line. This would add much-needed capacity, upgrading the electricity transmission network between a new substation to the north of Hull and a new substation at High Marnham in Nottinghamshire.

We are now consulting on our latest proposals, which are part of The Great Grid Upgrade, the largest overhaul of the grid in generations. The Great Grid Upgrade will play a big part in the UK Government's plans to boost homegrown power.

It will help to reduce carbon emissions and make sure our electricity network is fit for the future by carrying more clean, secure energy from where it's generated to where you need it.

After two years of development and listening to public feedback, we would like to hear your views about our latest proposals.

**Our consultation will run from 12:00 noon on Tuesday 18 February to 11:59pm on Tuesday 15 April 2025.** The consultation is an opportunity to see how our proposals have developed and how previous feedback has been considered as we have evolved our plans. We want to hear your views on our updated proposals.

**The deadline for providing feedback is 11:59pm on Tuesday 15 April 2025.**

## View our statutory consultation proposals

Scan the QR code to visit our website, where you can view all of our consultation materials (including our interactive map) and submit your feedback.



# What are we asking for your views on?

**We'd like to hear your thoughts about our detailed proposals, including the preferred route for the new overhead line, possible pylon positions and how we are proposing to avoid, minimise and address any potentially significant environmental effects.**

A full summary of our proposals is as follows:

- approximately 90 km of new 400 kilovolt (kV) overhead line between the new Birkhill Wood and High Marnham substations
- replacement and realignment of a section of the existing overhead line between Brantingham and east of Broomfleet
- replacement and realignment of a section of the existing overhead line between Ealand and west of Keadby
- a new 400 kV gas insulated switchgear substation with a new permanent access at Birkhill Wood
- replacement and realignment of a section of existing overhead line, to allow for connection into the new Birkhill Wood substation
- a new air insulated switchgear substation with a new permanent access at High Marnham
- replacement and realignment of sections of existing overhead lines, to allow for connection into the new High Marnham substation
- other required works, including temporary overhead line diversions and access roads, highway works, temporary construction areas, utility diversions, drainage works and other ancillary activities
- environmental mitigation, compensation and enhancement works, including for biodiversity net gain (BNG).

**BNG explained:** We will be required to deliver a minimum of 10 per cent biodiversity net gain (known as BNG). This means our work needs to result in more, or better quality, natural environment than before development. This opens up real opportunities to use development to enhance our wild spaces and provide new habitats.



**Substation types:** There are primarily two different types of substation – one uses air to insulate the electrical components (air insulated switchgear) and the other uses gas to insulate the electrical components (gas insulated switchgear).

The decision on which type of substation we construct depends on several factors including availability of space, potential environmental impacts, cost, safety and maintenance requirements.

## New substations

North Humber to High Marnham would connect to two new substations – one at Creyke Beck near Cottingham in the East Riding of Yorkshire (known as Birkhill Wood substation), and one at High Marnham in Nottinghamshire (part of a project called Brinsworth to High Marnham).

We are submitting planning applications for each of these new 400 kV substations to the relevant local planning authorities under the Town and Country Planning Act. We will also seek permission to build both substations as part of our development consent order application for North Humber to High Marnham.

You can provide comments on the proposed substations as part of this consultation, or you can provide comments directly to the relevant local planning authorities when the planning applications for the substations are submitted.

## Temporary construction requirements

Building a new overhead line would involve some temporary construction activities. These would include preparing land and creating temporary haul roads to access work areas, as well as providing temporary areas to store materials and vehicles, and for staff welfare facilities. These temporary construction areas would be removed and the land returned to its original condition once the construction works are completed. You can find animations with more information on how we undertake construction on our website at [nationalgrid.com/nh-hm](https://nationalgrid.com/nh-hm).

## What is a statutory consultation?

The amount of overhead line in our current proposals means North Humber to High Marnham is classed as a nationally significant infrastructure project under the Planning Act 2008. This means we need to apply for a type of planning consent called a development consent order (DCO) to build and operate it.

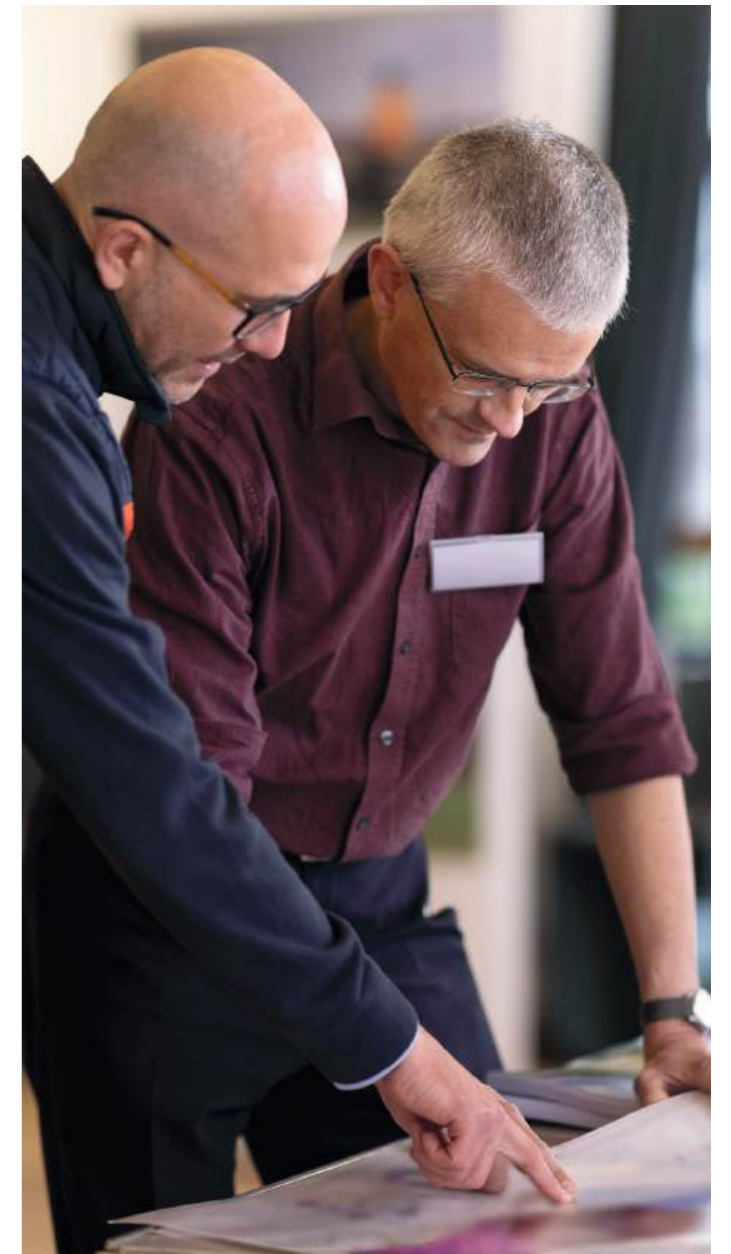
This is our next stage of public consultation on proposals for North Humber to High Marnham. It is a statutory consultation, which means that it is being carried out in line with the formal requirements of the Planning Act 2008.

Consultation is an important part of the DCO process as it enables everyone to comment on the proposals. All feedback we receive as part of this latest consultation will be carefully considered alongside the results of technical assessments and environmental surveys, as we finalise our proposals before submitting our DCO application.

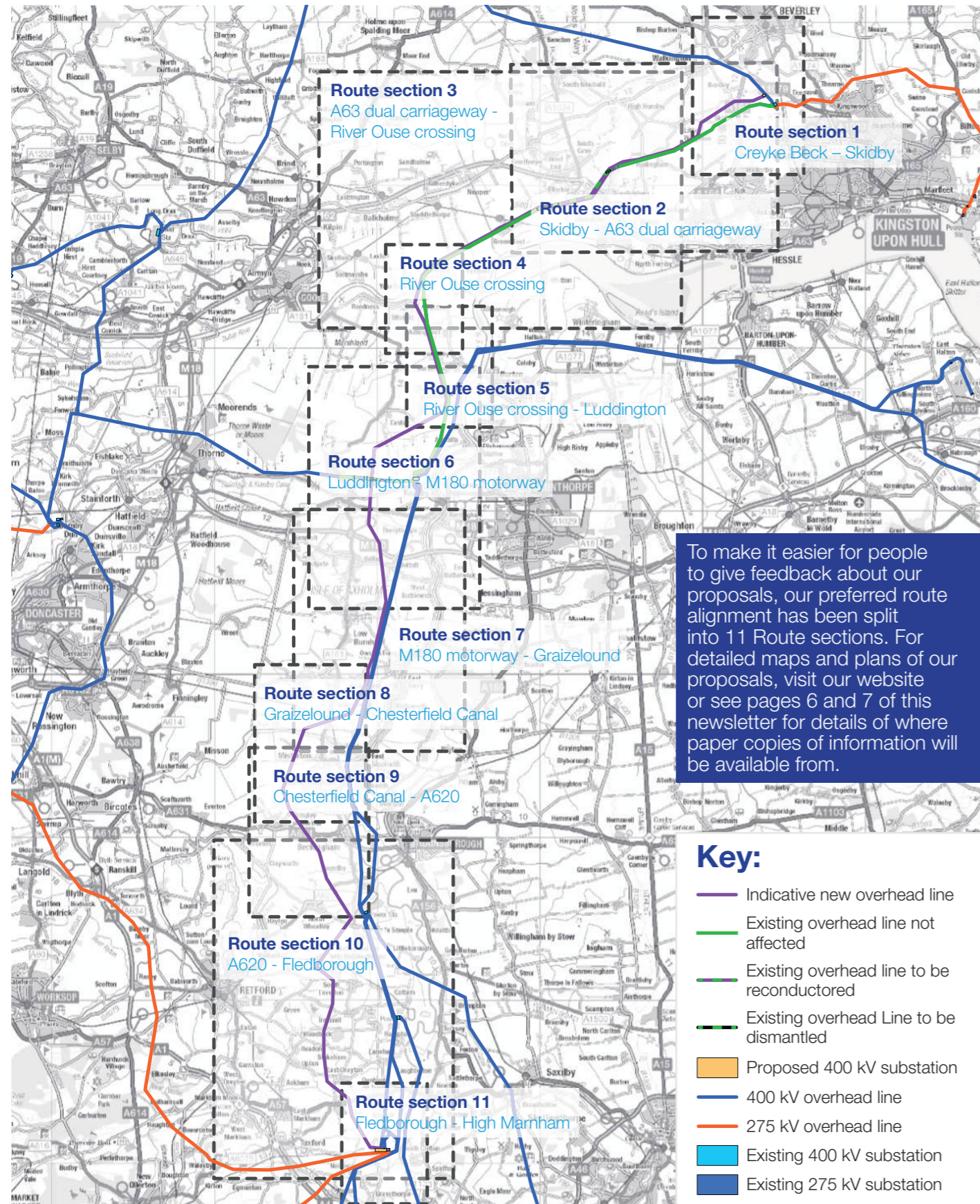
If our DCO application is accepted, the Planning Inspectorate will appoint what is called an 'Examining Authority' to independently review and examine our application, including encouraging the submission of views from communities and other interested parties.

The Examining Authority will then make a recommendation to the Secretary of State for Energy Security and Net Zero, who will decide whether to grant consent for a DCO.

To find out more about the DCO process, please see the Planning Inspectorate's website at [infrastructure.planninginspectorate.gov.uk](https://infrastructure.planninginspectorate.gov.uk).



# Overview of our proposals



To make it easier for people to give feedback about our proposals, our preferred route alignment has been split into 11 Route sections. For detailed maps and plans of our proposals, visit our website or see pages 6 and 7 of this newsletter for details of where paper copies of information will be available from.

# Consultation materials

We encourage you to provide feedback after reading our Project background document, which outlines our proposals and early environmental studies. More detailed information, including preliminary environmental information, is available on our website.

Our statutory consultation will run for eight weeks from 12:00 noon on Tuesday 18 February to 11:59pm on Tuesday 15 April 2025. It is open to anyone with an interest in our proposals. You can take part in the consultation by:

- Attending a public information event** – come to one of our events to view our proposals, speak to members of the project team and read all of our consultation materials, including our Project background document, which outlines our plans.
- Attending a webinar** – we are holding six online webinar sessions where you can learn more about our proposals. Two of the webinars will provide a general overview of our proposals, whilst the remaining four webinars will focus on different geographic sections of the project. Details on how to sign up for a webinar are available on our website, by contacting us on 0808 189 1346 or by email at [contact@nh-hm.nationalgrid.com](mailto:contact@nh-hm.nationalgrid.com).
- Visiting our website** – [nationalgrid.com/nh-hm](http://nationalgrid.com/nh-hm), where you will find all of our consultation materials, including maps, technical documents, the Preliminary environmental information report and our Feedback questionnaire.

Please get in touch if you would like a paper copy of the documents.



How to submit your feedback

- Complete an online feedback questionnaire** – the easiest way to submit your feedback is by completing our online feedback questionnaire, which is available on our website at [nationalgrid.com/nh-hm](http://nationalgrid.com/nh-hm), or by scanning the QR code.
- Email us your comments** – you can submit your feedback via email to [contact@nh-hm.nationalgrid.com](mailto:contact@nh-hm.nationalgrid.com).
- Write to us** – you can download and print a paper copy of the Feedback questionnaire from our website. Paper copies are also available at public information events and at local information points. Completed paper feedback questionnaires or letters can then be sent to us at **Freepost NH TO HM** (no stamp required).

## Public information events



Date and time	Venue
Saturday 1 March 2025 11am–4pm	Dunham on Trent Village Hall, Low Street, Dunham, NG22 0FJ
Monday 3 March 2025 1–7pm	Gringley on the Hill Community Centre, W Wells Lane, Gringley on the Hill, DN10 4QY
Tuesday 4 March 2025 1–7pm	North and South Wheatley Village Hall, Sturton Road, South Wheatley, DN22 9DL
Monday 10 March 2025 1–7pm	Crowle Community Hall, Woodland Avenue, Crowle, DN17 4LL
Friday 14 March 2025 1–7pm	All Saints Community Centre, Church Hill, South Cave, HU15 2EU
Saturday 15 March 2025 11am–4pm	Gilberdyke Memorial Hall, 11 Clementhorpe Road, Gilberdyke, HU15 2UB
Wednesday 19 March 1–7pm	Garthorpe Village Hall, Shore Road, Garthorpe, DN17 4AD
Friday 21 March 1–7pm	Epworth Imperial Hall, Chapel Street, Epworth, DN9 1HJ
Wednesday 26 March 1–7pm	Cottingham Civic Hall, Market Green, Cottingham, HU16 5QF

## Webinars



Date and time	Topic
Tuesday 25 February 2025 6:30–7:30pm	General overview of our proposals
Thursday 6 March 2025 6:30–7:30pm	Route sections 1, 2 and 3: Creyke Beck – River Ouse crossing
Tuesday 11 March 2025 6:30–7:30pm	Route sections 4, 5, 6 and 7: River Ouse crossing – Graizelound
Thursday 13 March 2025 6:30–7:30pm	Route sections 8 and 9: Graizelound – A620 east of North Wheatley
Tuesday 18 March 2025 6:30pm–7:30pm	Route sections 10 and 11: A620 east of North Wheatley – High Marnham
Thursday 27 March 2025 2–3pm	General overview of our proposals

## Local information points



Information about North Humber to High Marnham is available to view and collect from the following locations from Tuesday 18 February 2025. For opening hours, please contact the venue directly or contact our Community relations team using the details on the back of this newsletter.

### Location

Beverley Library, Champney Treasure House, Champney Road, Beverley, HU17 8HE

South Cave Library, 97 Church Street, South Cave, HU15 2EP

Goole Library, Carlisle Street, Goole, DN14 5DS

Cottingham Library and Customer Service Centre, Market Green, Cottingham, HU16 5QG

Crowle Library, The Market Hall, Crowle, DN17 4LA

Epworth Library, Live Well Isle of Axholme, Burnham Road, Epworth, DN9 1BZ

Haxey Library, The Memorial Hall, Haxey, DN9 2HH

Misterton Library, High Street, Misterton, DN10 4BU

Retford Library, Churchgate, Retford, DN22 6PE

Bassetlaw District Council (Retford Office), 17B The Square, Retford, DN22 6DB\*

Gainsborough Library, Cobden Street, Gainsborough, DN21 2NG

All Saints Parish Church Misterton, High Street, Misterton, DN10 4AL

Nottinghamshire Mobile Libraries (North Route 11). To find out when the mobile library is in your area, email [ask@inspireculture.co.uk](mailto:ask@inspireculture.co.uk) or call **01623 677 200**

\* Bassetlaw District Council's Retford Office is operating from a temporary location until late-February 2025. For more information, visit the Council's website.





## Why can't the project be routed underground?

When we need to add capacity to the electricity network, we look at all the options, including overhead lines and underground cables. Underground cables have different environmental impacts and cost much more than overhead lines. Government expects us to keep costs on electricity bills as low as possible.

For those reasons, the national policy statement for new electricity infrastructure (EN-5) explains that government expect overhead lines to be appropriate in many cases, but not in sensitive locations like National Landscapes.

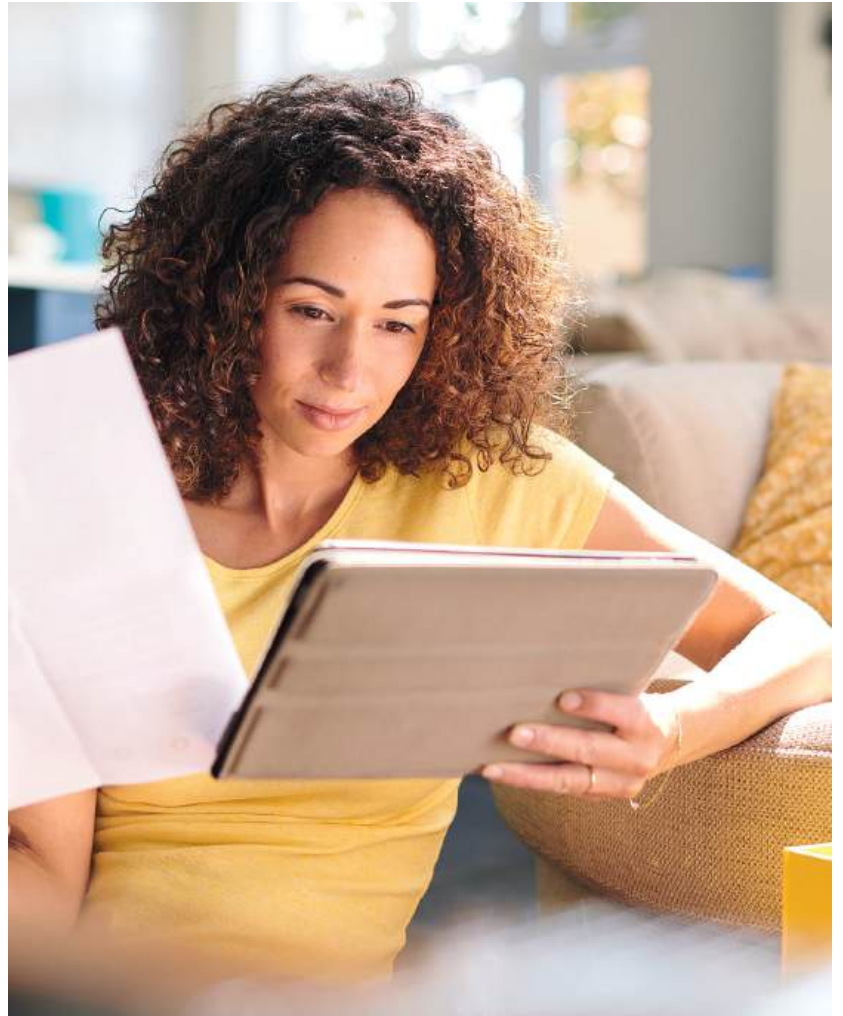
## Have you considered environmental impacts?

Yes. As part of the consultation, we are seeking views on the potential environmental effects of the proposals and whether consultees have suggestions for reducing these effects (for example, through mitigation measures). This information is detailed in the Preliminary environmental information report (PEIR). The PEIR explains how we propose to reduce these effects and how we propose to maximise the benefits of the Project. A non-technical summary of the PEIR is also available to read.

## Information for landowners

If you feel your land may be affected by the proposals, please contact the North Humber to High Marnham Lands team at Dalcour Maclaren by emailing us at [NH-HM@dalcourmaclaren.com](mailto:NH-HM@dalcourmaclaren.com) or by calling us on **0333 188 3511**.

Alternatively, you can write to the North Humber to High Marnham Lands team at **Dalcour Maclaren, Unit 1, Staplehurst Farm, Weston on the Green, OX25 3QU**.



## Contact us

If you would like to contact the Community relations team, please get in touch via:

[contact@nh-hm.nationalgrid.com](mailto:contact@nh-hm.nationalgrid.com)

0808 189 1346

Freepost NH TO HM

[nationalgrid.com/nh-hm](https://nationalgrid.com/nh-hm)



nationalgrid