

The Great Grid Upgrade

North Humber to High Marnham

Statement of Community Consultation

February 2025



nationalgrid

Contents

1.	Introduction	5
1.1	Purpose of the document	5
1.2	Nationally Significant Infrastructure Projects	6
1.3	Environmental Impact Assessment (EIA)	6
1.4	About National Grid Group plc	6
1.5	National Grid's duties	7
2.	The Project	9
2.1	Project background and need	9
2.2	New substations	9
2.3	Inclusion of the new substations in the North Humber to High Marnham statutory consultation	10
2.4	Project description	11
3.	Consultation and engagement to date	12
3.1	Approach	12
3.2	Non-statutory consultation 2023	12
3.3	Localised non-statutory consultation 2024	13
3.4	Previous consultation on Birkhill Wood substation	14
3.5	Previous public consultation on High Marnham substation	14
4.	Project timeline	16
5.	Consulting on the proposed application	18
5.1	When will the statutory consultation take place?	18
5.2	What will be consulted on?	18
5.3	Who will be consulted?	19
5.4	Consultation materials	20
5.5	Promoting the consultation	27
5.6	Public information events	29
5.7	Webinars	30
5.8	Stakeholder briefings and meetings	31
5.9	Underrepresented and local interest groups	31

6.	Responding to the consultation	35
6.1	Methods of responding	35
6.2	Providing consultation feedback on the substations	35
6.3	Reporting on consultation feedback received	36
6.4	Further consultation	36
7.	Other developers' consultations	37

Table 4.1 – Stages of the DCO consenting process	16
Table 5.1 – Consultation materials	20
Table 5.2 – Methods to make consultation documents available	25
Table 5.3 – Promotion methods	27
Table 5.4 – Public information events	30
Table 5.5 – Webinars	31
Table 5.6 – Underrepresented group engagement tools	32

Figure 4.1 – DCO consenting process	16
-------------------------------------	----

Appendix A Primary consultation zone and secondary consultation zone	
Appendix B Local interest groups	

PAGE INTENTIONALLY BLANK

1. Introduction

1.1 Purpose of the document

- 1.1.1 This document is a Statement of Community Consultation (SoCC) and relates to the North Humber to High Marnham Project (the Project), which is being promoted by National Grid Electricity Transmission plc (National Grid). We are promoting the Project to provide an upgrade to the electricity transmission network between a new substation at Creyke Beck, Cottingham in the East Riding of Yorkshire and a new substation at High Marnham in Nottinghamshire. The SoCC sets out how we propose to consult people living in the vicinity of the land who would be affected by National Grid's application for the Project, including residents, businesses and the local community. This would take place alongside our consultation with statutory bodies and stakeholders.
- 1.1.2 National Grid expects the Project to be classified as a Nationally Significant Infrastructure Project (NSIP) and requires consent from the Secretary of State for Energy Security and Net Zero (the SoS) via a Development Consent Order (DCO).
- 1.1.3 Engagement with the local community is an important part of the development of the Project and has been ongoing with the community and other stakeholders since 2023. This document has been prepared in accordance with Section 47(1) of the Planning Act 2008 (the Act), which requires applicants to prepare a statement explaining how they will consult with people living in the vicinity of the land where the Project is to be located (from here called 'the local community') about the proposed DCO application, and to carry out pre-application consultation in accordance with this statement.
- 1.1.4 The Project is an Environmental Impact Assessment (EIA) development. This SoCC therefore also sets out how National Grid intends to publicise and consult on the preliminary environmental information, in accordance with Regulation 12 of the Infrastructure Planning (Environmental Impact Assessment) Regulations 2017 (the EIA Regulations).
- 1.1.5 National Grid has already undertaken an earlier phase of non-statutory consultation in relation to the Project. Having engaged with local authorities, we produced the North Humber to High Marnham public consultation strategy¹ for the non-statutory consultation. In accordance with section 47(2) of the Act, in developing the SoCC National Grid has consulted with and had regard to comments from the following local authorities:
- East Riding of Yorkshire Council
 - North Lincolnshire Council
 - Bassetlaw District Council
 - Newark and Sherwood District Council
 - Nottinghamshire County Council.

¹ <https://www.nationalgrid.com/electricity-transmission/document/148911/download>

1.2 Nationally Significant Infrastructure Projects

- 1.2.1 The Project is expected to be classified as an NSIP under Section 14(1)(b) and Section 16(1)(a) of the Act, because it comprises a new above-ground electric line of more than 2 kilometres (km), with an operating voltage of above 132 kilovolts (kV). National Grid intends to submit an application for a DCO to the Planning Inspectorate under Section 37 of the Act.
- 1.2.2 The application for development consent will be submitted to, and examined by, the Planning Inspectorate, who appoints an Examining Authority to examine the application on behalf of the SoS. The Examining Authority will provide a recommendation to the SoS, who will ultimately decide whether to grant development consent for the Project.
- 1.2.3 Before submitting an application, we are required by the Act to carry out consultation with people living in the vicinity of the land where the Project is proposed to be located, and with other prescribed consultees. This early involvement of communities, host local authorities and other stakeholders helps to ensure that we identify valuable information about the potential impacts of the Project so that mitigation measures can be considered and, where appropriate, built into our design before an application for development consent is submitted.

1.3 Environmental Impact Assessment (EIA)

- 1.3.1 The Project is an “EIA Development”. On 21 August 2023, National Grid submitted a Scoping Report to the SoS to inform the EIA proposed for the Project.
- 1.3.2 Within the Scoping Report, National Grid gave formal written notification under Regulation 8(1)(b) of the EIA Regulations that it considers the Project will (and that National Grid will in due course provide) an environmental statement in respect of the project, and that it is considered to be an EIA Development.
- 1.3.3 A scoping opinion for the Project was adopted by the Planning Inspectorate (on behalf of the SoS) on 29 September 2023.

1.4 About National Grid Group plc

- 1.4.1 National Grid sits at the heart of Great Britain’s energy system, connecting millions of people and businesses to the energy they use every day. We bring energy to life: in the heat, light and power we bring to our customers’ homes and businesses, in the way that we support our communities and help them to grow, and in the way we show up in the world. It is our vision to be at the heart of a clean, fair and affordable energy future.
- 1.4.2 Within the wider National Grid plc group of companies, there are three separate legal entities, each with their own roles and responsibilities.
- 1.4.3 National Grid Electricity Transmission (referred to here as National Grid) holds the transmission licence for England and Wales under the Electricity Act 1989. National Grid owns, builds and maintains the high voltage electricity transmission system in England and Wales – the overhead lines, buried cables and substations that carry power around the country. It is National Grid that is developing the proposals for the Project.
- 1.4.4 National Grid Electricity Distribution owns and operates the distribution networks for the Midlands, the southwest of England and south Wales.

- 1.4.5 National Grid Electricity System Operator (ESO), which has recently been replaced by the National Energy System Operator (NESO), operates the transmission network in Great Britain, including the networks in Scotland owned by Scottish Power Transmission and Scottish and Southern Electricity Networks. NESO manages the network, ensuring the right amount of energy is provided where it is needed.
- 1.4.6 In April 2019, ESO became a legally separate business within the National Grid plc group and is regulated independently by Ofgem.
- 1.4.7 The Energy Act 2023 legislated for the creation of a Future Systems Operator to replace ESO. In January 2024, ESO announced that the Future Systems Operator would be called the National Energy Systems Operator (NESO), which would be founded on the current activities of ESO and take a whole-system approach to strengthen energy security, help deliver the Government’s Net Zero legislative agenda and ensure that household bills are affordable in the long term.
- 1.4.8 National Grid Ventures (NGV) is the unregulated commercial arm of National Grid plc. It invests in technologies and partnerships that help accelerate our move to a clean-energy future. This includes interconnectors, which connect the UK with countries across the North Sea, allowing trade between energy markets and efficient use of renewable energy resources.

1.5 National Grid’s duties

- 1.5.1 National Grid has a statutory duty to develop and maintain an efficient, coordinated and economical system of electricity transmission under the Electricity Act 1989. This includes a statutory obligation to offer to connect any new generating stations or interconnectors applying to connect to the transmission system.
- 1.5.2 In developing proposals that affect the transmission system (including proposals to reinforce the network to accommodate new connections), National Grid is required to consider relevant National Policy Statements (NPSs). The NPSs relevant to the Project are the Overarching National Policy Statement for Energy (EN-1) and the National Policy Statement for Electricity Networks Infrastructure (EN-5). The National Policy Statement for Renewable Energy (EN-3) also includes support for the onshore infrastructure required to deliver new offshore wind development. These NPSs came into force in January 2024.
- 1.5.3 National Grid is also required, under Section 38 of the Electricity Act 1989, to comply with the provisions of Schedule 9 of the Electricity Act 1989. Schedule 9 requires licence holders, in the formulation of proposals to transmit electricity, to preserve amenity, as outlined below:

“Schedule 9(1)(a): “...have regard to the desirability of preserving natural beauty, of conserving flora, fauna and geological or physiographical features of special interest and of protecting sites, buildings and objects of architectural, historic or archaeological interest”,

“Schedule 9(1)(b): “...do what [it] reasonably can to mitigate any effect which the proposals would have on the natural beauty of the countryside or on any such flora, fauna, features, sites, buildings or objects.”

- 1.5.4 How we set out to meet these environmental responsibilities, and our commitments relating to engagement and consultation about proposals, is explained in our Stakeholder, Community and Amenity Policy².

² <https://www.nationalgrid.com/electricity-transmission/document/81026/download>

2. The Project

2.1 Project background and need

- 2.1.1 The way we generate electricity in the UK is changing rapidly, and we are transitioning to cheaper, cleaner and more secure forms of energy like new offshore windfarms. National Grid needs to make changes to the network of overhead lines, pylons, cables and other infrastructure that transports electricity around the country so that everyone has access to clean electricity from these new renewable sources.
- 2.1.2 The Project is required to increase the capability of the electricity transmission network between the north of England and the Midlands. It is needed to facilitate the connection of proposed new offshore wind that is planned to connect in the Creyke Beck area in the next decade. Should all of these be built, this would amount to just under 12 gigawatts (GW) of generation capacity by the early 2030s. The existing network serving the Creyke Beck area can export just under 7 GW of electricity while remaining compliant with the Security and Quality of Supply Standards to which the network is operated.
- 2.1.3 With around 18.7 GW of contracted generation and interconnector capacity by 2035, the network as it is today, notwithstanding local demand, would not have the capacity needed to export that amount of electricity out of the area or to accommodate the north–south power flows that are expected on the network.
- 2.1.4 The Project is a proposal by National Grid to reinforce the electricity transmission network through the construction and operation of approximately 90 km of new 400,000 volt (400 kV) overhead electricity transmission line from a new substation at Creyke Beck, Cottingham in the East Riding of Yorkshire, and a new substation in High Marnham, Nottinghamshire.
- 2.1.5 The Project is one of a number of network upgrades that needs to be accelerated to help meet increased Government targets for offshore wind. All of this work forms part of The Great Grid Upgrade – National Grid’s programme to deliver over five times the amount of electricity transmission infrastructure in the next seven years than has been built in the past 30 years.
- 2.1.6 The Great Grid Upgrade will play a big part in the UK government’s plan to boost homegrown power. It will help the UK switch to clean energy and make sure our electricity network is fit for the future; carrying more clean, secure energy from where it is generated to where it is needed. North Humber to High Marnham is one of 17 network reinforcements identified as ‘essential’ and which need to be accelerated to meet 2030 targets.

2.2 New substations

- 2.2.1 The Project would need to connect to two new substations – one at Creyke Beck, Cottingham, (known as Birkhill Wood Substation) in the East Riding of Yorkshire and a new substation at High Marnham in Nottinghamshire (part of a project called ‘Brinsworth to High Marnham’). National Grid is applying for planning permission for the two new 400 kV substations from the relevant local planning authorities under the Town and Country Planning Act.

- 2.2.2 In 2025, a planning application is intended to be submitted to East Riding of Yorkshire Council for the new Birkhill Wood substation. In 2025, a planning application is also intended to be submitted to Bassetlaw District Council for the new High Marnham substation. Separate pre-application public consultations have been undertaken for the substation applications ahead of these planning applications being submitted. Further information on these consultations is provided in Section 3.
- 2.2.3 In addition to connecting the new overhead line reinforcement which this Project will provide, the substations are also needed to provide a connection point for third-party developments to connect into the transmission network in the Cottingham and High Marnham areas.
- 2.2.4 Further information on the pre-application consultations held for each of these substations is set out in Section 3 of this SoCC.
- 2.2.5 Once the planning applications for each substation have been submitted to the local planning authorities, members of the public and stakeholders may submit comments on the planning applications directly to the relevant local planning authority. Once planning application reference numbers have been provided by the local planning authorities, we will provide an update on the Project website.

2.3 Inclusion of the new substations in the North Humber to High Marnham statutory consultation

- 2.3.1 While the new substations did not form part of our proposals for North Humber to High Marnham during our non-statutory consultation 2023 and localised non-statutory consultation 2024, we have made the decision to include both substations within this statutory consultation for the Project. This approach allows National Grid to demonstrate that the Project can be delivered and that it can connect to the national transmission network.
- 2.3.2 National Grid is obligated to meet certain timescales for the delivery of the network reinforcement through the proposed new 400 kV overhead line, and the substations are integral to this. The inclusion of the substations within the Project does not change our intention to continue to progress with the separate planning applications for each substation, and it does not affect our continuing discussions and negotiations with relevant landowners and interested parties. We are committed to, and fully intend to pursue and deliver, the substations pursuant to those permissions and land agreements.
- 2.3.3 National Grid will continue to keep this approach under review as the Project progresses. The new proposed substations will play an important role in building a more secure and resilient future energy system.
- 2.3.4 Information on how feedback on the substations included as part of this statutory consultation will be analysed, is set out in Section 6 of this SoCC. In addition, substation feedback will also be shared with our teams responsible for the separate planning applications for both substations.
- 2.3.5 As set out in section 2.4 (project description) the works at the new High Marnham substation also include the replacement and realignment of the existing 4ZV and XE 275kV overhead line routes and existing 400kV ZDA and ZDF overhead line routes, to allow for connection into the new High Marnham substation. The uprating works

associated with the existing 4ZV route (between Chesterfield and High Marnham) extend into Newark and Sherwood District Council boundary for approximately 1.4 km.

- 2.3.6 Newark and Sherwood District Council were consulted during our localised non-statutory consultation in 2024, however, at that point they were not a host local authority. Due to the inclusion of the works to the existing overhead lines associated with High Marnham substation in our statutory consultation, Newark and Sherwood District Council have now been identified as a host local authority for the purposes of our statutory consultation.

2.4 Project description

- 2.4.1 North Humber to High Marnham ('the Project') is a proposal by National Grid to upgrade the electricity transmission system between new substations near Cottingham and High Marnham. The Project includes a new 400 kV electricity transmission connection of an overall length of approximately 90 km between two proposed new substations, Birkhill Wood 400 kV substation and High Marnham 400 kV substation. National Grid will consult on all aspects of the proposed development for the Project, including:

- approximately 90 km of new overhead line between the new Birkhill Wood and High Marnham 400 kV substations
- replacement and realignment of a section of the existing 400 kV 4ZQ overhead line route between Brantingham and east of Broomfleet
- replacement and realignment of a section of the existing 400 kV ZDA overhead line route between Ealand and west of Keadby
- a new 400 kV Birkhill Wood substation with a new permanent access. This is proposed to be a gas insulated switchgear substation
- replacement and realignment of a section of the existing 400 kV 4ZR route to allow for connection into the new Birkhill Wood substation
- a new 400 kV High Marnham substation, with a new permanent access. This is proposed to be an air insulated switchgear substation
- replacement and realignment of the existing 4ZV and XE 275 kV overhead line routes and existing 400 kV ZDA and ZDF overhead line routes, to allow for connection into the new High Marnham substation
- other required works, for example, temporary diversions for works on existing overhead line routes, temporary access roads, highway works, temporary works compounds, work sites and ancillary works. The Project will also include utility diversions and drainage works. There would also be land required for mitigation, compensation and enhancement of the environment, including for biodiversity net gain.

3. Consultation and engagement to date

3.1 Approach

3.1.1 National Grid is committed to engaging and consulting with communities and stakeholders at an early stage of the Project, giving local communities the opportunity to provide feedback and insight at a formative stage ahead of more detailed design work being carried out. The approach to engagement has been to carry out both non-statutory and statutory consultation, guided by the requirements of the Act.

3.2 Non-statutory consultation 2023

3.2.1 The non-statutory consultation was held between 1 June and 27 July 2023. This consultation aimed to:

- introduce National Grid and the early-stage proposals
- explain the needs case for the Project and the requirement for building new electricity transmission infrastructure in the area
- outline the work carried out to identify the emerging preferred route corridor and graduated swathe
- ensure all stakeholders had the opportunity to provide feedback on the work to date
- outline next steps and programme for how the proposals would be developed further.

3.2.2 The consultation provided stakeholders and the local community with digital and non-digital opportunities to engage with the early-stage proposals, including a dedicated website, face-to-face public events and online webinar sessions, as well as via email, phone and Freepost.

3.2.3 At this stage, National Grid presented a graduated swathe within which new infrastructure could be located in the corridor.

3.2.4 We consulted with a range of stakeholders, including local councils, elected representatives, local residents, seldom heard groups and local interest groups.

3.2.5 To raise awareness of the launch of the consultation, National Grid sent newsletters to all properties within the primary consultation zone (PCZ). The PCZ included all properties situated within 1 km of the edge of the emerging preferred route corridor. Where appropriate, the PCZ was extended to include whole streets rather than the 1 km boundary dissecting streets, hamlets or neighbourhoods. For the non-statutory consultation 2023, the PCZ amounted to 11,919 properties.

3.2.6 A secondary consultation zone (SCZ) was also established, which extended to 5 km from the edge of the emerging preferred route corridor. To raise awareness of the Project and consultation amongst communities and stakeholders in the SCZ, advertisements were placed in local newspapers and on social media.

- 3.2.7 Following the conclusion of this consultation, feedback was analysed. A backcheck and review of the Corridor Preliminary Routeing and Site Study (CPRSS) 2023 took place, taking into account new information received within the consultation feedback and further design and assessment work.
- 3.2.8 As a result, the Project identified a potential alternative corridor in the southernmost section of the route between the villages of South Wheatley and High Marnham. This is referred to as the 'eastern corridor'.
- 3.2.9 Due to the location of the alternative corridor, a localised non-statutory consultation took place between 9 July and 6 August 2024 to ensure all local communities were consulted.

3.3 Localised non-statutory consultation 2024

- 3.3.1 The localised non-statutory consultation was held between 9 July 2024 and 6 August 2024. This consultation aimed to:
- introduce and consult on the potential alternative corridor, referred to as the 'eastern corridor'
 - outline the work carried out since the non-statutory consultation 2023 and why an alternative was being considered
 - ensure all stakeholders (both previous and newly consulted) had the opportunity to provide feedback on the eastern corridor ahead of a more detailed design being developed and presented at during this statutory consultation
 - outline next steps and programme for how the proposals would be developed further.
- 3.3.2 The consultation provided stakeholders and the local community with digital and non-digital opportunities to engage with the early-stage proposals, including a dedicated website, face-to-face public events and online webinar sessions, as well as via email, phone and Freepost.
- 3.3.3 We continued to use digital methods for consultation, including an online interactive map (with removable layers to show the 2023 and 2024 proposals), searchable frequently asked questions (FAQs), a document library with interactive PDFs and an online feedback questionnaire for people to provide comments.
- 3.3.4 As with the non-statutory consultation 2023, we consulted with a range of stakeholders, including local councils, elected representatives, local residents, seldom heard groups and local interest groups.
- 3.3.5 To raise awareness of the launch of the consultation, National Grid sent newsletters to all properties within the primary consultation zone (PCZ). The PCZ for the localised non-statutory consultation 2024 extended 1 km from the 'eastern corridor' that was the focus of the consultation. Where appropriate, the PCZ was extended to include whole streets rather than the 1 km boundary dissecting hamlets or neighbourhoods. For the localised non-statutory consultation 2024, the PCZ amounted to 2,108 properties.
- 3.3.6 A secondary consultation zone (SCZ) was also established, which extended to 5 km from the edge of the eastern corridor. To raise awareness of the Project and consultation amongst communities and stakeholders in the SCZ, advertisements were placed in local newspapers and on social media.

- 3.3.7 Paper copies of key consultation documents were placed at information points in publicly accessible venues – libraries and, where possible, council offices – along the route of the eastern corridor. Alternative formats of documents were available on request.
- 3.3.8 Feedback from both the non-statutory consultation 2023 and the localised non-statutory consultation 2024, together with further technical assessments and environmental surveys, has been important to consider when deciding on the overall preferred corridor and identification of the route alignment ahead of this statutory consultation.
- 3.3.9 More information on both non-statutory consultations and how the feedback helped influence and shape the proposals to date can be found in the Non-statutory consultation feedback report which is available on the Project website.

3.4 Previous consultation on Birkhill Wood substation

- 3.4.1 Consultation was carried out in July 2023 for a new substation located approximately 700 metres to the north of the existing Creyke Beck substation, which we are now calling Birkhill Wood substation. The consultation in July 2023 also included proposals to extend to the existing Creyke Beck substation, which we are now referring to as Wanlass Beck Substation (also known as the Creyke Beck extension and new substation project). Wanlass Beck substation does not form part of this Project's proposals.
- 3.4.2 Consultation was held between 29 June and 27 July 2023. Consultation activities included a launch letter and leaflet sent to addresses within 1 km of the proposed works, offers of briefings to local MPs, ward councillors and parish councillors within 1 km, and a public consultation event on 8 July 2023.
- 3.4.3 Since consulting in July 2023, the project team has been reviewing feedback and has continued to develop and refine the proposed design.
- 3.4.4 As the Birkhill Wood substation is also now included in this Project, there is also the opportunity to provide feedback in response to this statutory consultation. Any feedback about the Birkhill Wood substation received in response to this statutory consultation will be analysed and reviewed in the same way as all other feedback (see Section 6 of this SoCC for further details). In addition, feedback about the Birkhill Wood substation will be shared with the project team responsible for the separate planning application for this substation.
- 3.4.5 More information about the Creyke Beck extension and new substation project, previous consultation details for Birkhill Wood substation and the latest updates can be found at the dedicated project website: nationalgrid.com/creyke-beck.

3.5 Previous public consultation on High Marnham substation

- 3.5.1 Consultation on the proposals for a new substation at High Marnham, Nottinghamshire, took place in April and May 2024 as part of a project called Brinsworth to High Marnham.
- 3.5.2 Consultation was held between 22 April and 20 May 2024. Consultation activities included two in-person events, held on 26 April and 27 April 2024, one webinar, a letter sent to more than 300 addresses in the area around the proposed site, and editorial and press advertisements.

- 3.5.3 Since consulting in May 2024, the project team has been reviewing feedback and has continued to develop and refine the proposed design.
- 3.5.4 As the High Marnham substation is also now included in this Project, there is also the opportunity to provide feedback in response to this statutory consultation. Any feedback about the High Marnham substation received in response to this statutory consultation will be analysed and reviewed in the same way as all other feedback (see Section 6 of this SoCC for further detail). In addition, feedback about the High Marnham substation will be shared with the project team responsible for the separate planning application for this substation.
- 3.5.5 More information about the Brinsworth to High Marnham project, previous consultation details and latest updates can be found at the dedicated project website: nationalgrid.com/b-hm.

4. Project timeline

4.1.1 The Project is currently in the pre-application stage of the DCO consenting process. Figure 4.1 sets out the DCO consenting process. Table 4.1 sets out the milestones for each stage of the consenting process for the Project and indicative dates from pre-application consultation through to construction.

Figure 4.1 – DCO consenting process

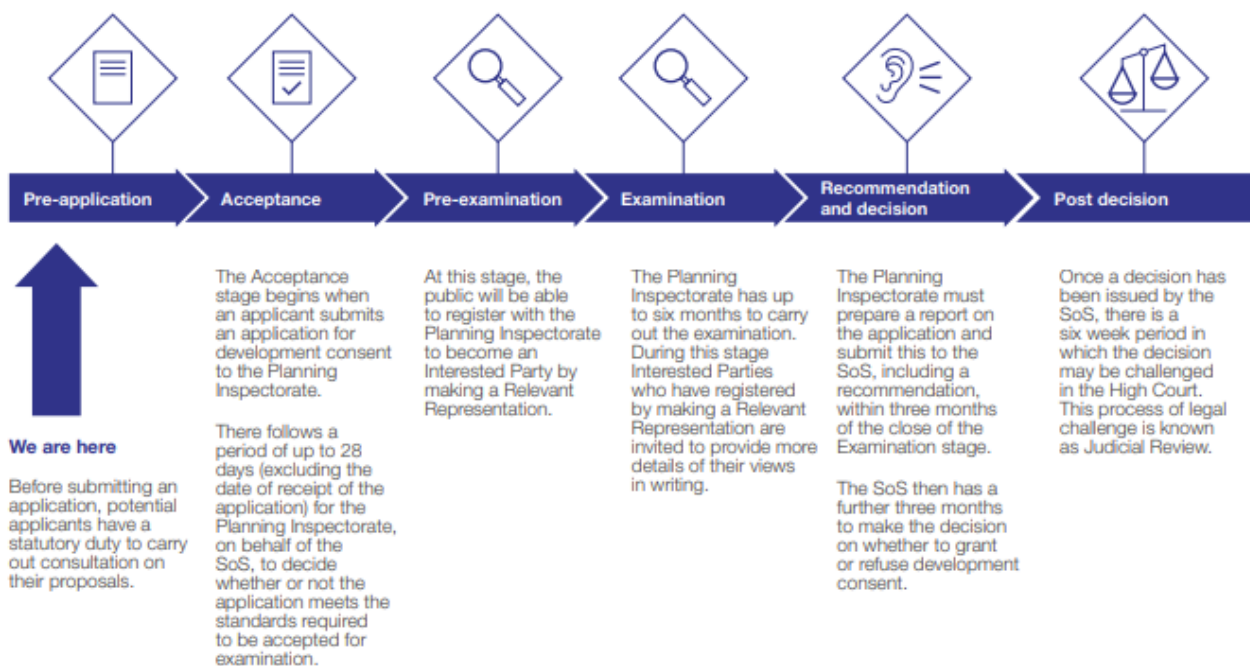


Table 4.1 – Stages of the DCO consenting process

Stage
Non-statutory consultation – We held an initial stage of non-statutory consultation from 1 June to 27 July 2023 on our emerging preferred corridor route between Creyke Beck, north of Hull, and High Marnham in Nottinghamshire.
Consideration of non-statutory consultation feedback – We reviewed and considered the feedback received during non-statutory consultation to inform the design of the Project. We identified a potential alternative eastern corridor between South Wheatley and High Marnham.
Localised non-statutory consultation – We held a localised non-statutory consultation from 9 July to 6 August 2024 on a potential alternative eastern corridor between South Wheatley and High Marnham.
Consideration of localised non-statutory consultation feedback – We continued to consider the feedback from our non-statutory consultation and reviewed feedback from our localised non-statutory consultation. Both non-statutory consultations helped to inform the development of our proposed alignment as presented during statutory consultation.

Stage

Statutory consultation – We will consult the public and statutory consultees (as outlined in Sections 42, 47 and 48 of the Act) on the more developed proposals, including a preferred overhead line alignment.

Consideration of statutory consultation feedback – We will review and have regard to the feedback from the statutory consultation and further refine and finalise the proposed design. We will also continue to engage with stakeholders prior to the submission of our DCO application.

DCO application submission – We will submit our DCO application to the Planning Inspectorate. The Planning Inspectorate, on behalf of the SoS, has up to 28 days to decide whether or not the application meets the standards required to be accepted for examination.

Examination – If the application is accepted, it will go through a six-month examination period. Prior to the examination period, stakeholders can register with the Planning Inspectorate to become an 'Interested Party' by making what is called a 'Relevant Representation'. Interested parties are invited to provide more details about their views in writing during this phase. Careful consideration is given by the Examining Authority to all relevant and written representations and supporting evidence. The Examining Authority is the Inspector or the Panel of Inspectors appointed to conduct the examination of the application for the DCO.

Recommendation and decision – Within three months of the close of the examination, the Examining Authority that conducted the examination must prepare a report on the examination, including a recommendation for the SoS. The SoS has a further three months to make a decision on whether to grant or refuse the application.

Post-decision – Once a decision has been issued by the SoS, there is a six-week period in which the decision may be challenged in the High Court. This is known as Judicial Review. If the application is granted development consent, construction can begin.

If our application is granted development consent, we expect construction of the Project to begin in 2027, with the Project becoming fully operational from 2031.

5. Consulting on the proposed application

5.1 When will the statutory consultation take place?

5.1.1 The statutory consultation (under Sections 42 and 47 of the Planning Act) will run for eight weeks from 18 February to 15 April 2025.

5.2 What will be consulted on?

5.2.1 We will seek views and feedback on the following elements of the Project, which comprises a major reinforcement and upgrade of the electricity transmission network between a new substation at Creyke Beck, Cottingham, (known as Birkhill Wood Substation) in the East Riding of Yorkshire and a new substation at High Marnham in Nottinghamshire:

- the proposed route of the new, approximately 90 km, 400 kV electricity line
- the location of new steel lattice pylons (approximately 50 m in height), some of which would be gantries (typically up to 15 m in height), for existing or proposed substations
- works to build new substations at Creyke Beck, Cottingham, (known as Birkhill Wood Substation) in the East Riding of Yorkshire and High Marnham, in Nottinghamshire, to connect and support the operation of the new transmission line for North Humber to High Marnham
- third-party utility diversions and/or modifications required to facilitate the construction of the Project, along with land required for mitigation, compensation and enhancement of the environment including Biodiversity Net Gain (BNG)
- land temporarily required for construction activities, including, for example, working areas for construction equipment and machinery, site offices, welfare, storage and temporary construction access
- construction methodology for preliminary locations for BNG and/or wider environmental gains.

5.2.2 The Project is classified as an EIA development and therefore we will also consult on preliminary environmental information as part of this statutory consultation, in the form of a Preliminary Environmental Information Report (PEIR). We will make the PEIR available on the Project website during statutory consultation, together with a non-technical summary of the PEIR. We will seek views on the information in those documents.

5.2.3 For the purposes of statutory consultation – and as presented during our non-statutory consultation – we have split the Project into 11 Route Sections to assist consultees in providing feedback:

- Route Section 1: Creyke Beck–Skidby
- Route Section 2: Skidby–A63 dual carriageway

- Route Section 3: A63 dual carriageway–River Ouse crossing
- Route Section 4: River Ouse crossing
- Route Section 5: River Ouse crossing–Luddington
- Route Section 6: Luddington–M180 motorway
- Route Section 7: M180 motorway–Graizelound
- Route Section 8: Graizelound–Chesterfield Canal
- Route Section 9: Chesterfield Canal–A620 east of North Wheatley
- Route Section 10: A620 east of North Wheatley–Fledborough
- Route Section 11: Fledborough–High Marnham.

5.2.4 Overall location plans will be used to describe these sections of the Project and will be provided during the statutory consultation, which is consistent with how the Project has previously been presented.

5.2.5 The Project would be designed, constructed and operated in accordance with applicable health and safety legislation. The Project would also need to comply with design safety standards, including the National Electricity Transmission System Security and Quality of Supply Standard (SQSS), which sets out the criteria and methodology for planning and operating the national electricity transmission system (NETS). This informs a suite of National Grid policies and processes that contain details on design standards required to be met when designing, constructing and operating assets such as those proposed for the Project.

5.3 Who will be consulted?

5.3.1 The consultation will be open to anyone who is interested in the Project. National Grid will have regard to all consultation feedback received by the relevant statutory consultation deadline when developing the design of the Project.

5.3.2 Under Section 47 of the Act, we have a duty to consult the local community. A geographic consultation zone has been created for this consultation (as seen in Appendix A). The consultation zone includes all addresses with property postcodes within 1 km of the Project’s red line boundary (which represents the anticipated extent of land in which the Project may take place).

5.3.3 The zone has changed since the non-statutory consultation as a result of feedback and environmental studies, as well as the inclusion of information such as construction accesses, laydown areas and the traffic route we propose to use during construction. The latest primary consultation zone (PCZ) includes approximately 10,000 addresses. Where appropriate, the PCZ has been extended to include whole streets and postcodes rather than the 1 km extents that dissected hamlets or neighbourhoods.

5.3.4 An additional wider secondary consultation zone (SCZ) has been developed, comprising a 5 km buffer around the red line boundary, in which wider publicity of the Project will take place. The SCZ can be found in Appendix A.

5.3.5 Communities within the PCZ and SCZ will be notified about the consultation via the methods outlined in section 5.5 of the SoCC.

- 5.3.6 We will also consult the following groups and individuals:
- parish councils representing parishes within the PCZ
 - local residents and businesses falling within the PCZ
 - resident, community, tourism and business organisations and groups, such as residents' associations, community groups and groups with specialisms, such as in local heritage or wildlife, that have been drawn to our attention by local authorities and engagement work to date
 - 'seldom heard groups' within either consultation zone that have been drawn to our attention by local authorities and other stakeholders, representing people who are unlikely to respond to traditional consultation techniques and may need additional support to access materials
 - local elected representatives who represent wards and constituencies within the PCZ
 - Members of Parliament (MPs) representing constituencies within either consultation zone.
- 5.3.7 In addition to the local community, we will consult prescribed bodies and local authorities under Section 42(1)(a), (b) and Section 43 of the Act. We will also consult persons with an interest in land under sections 42(1)(d) and 44 of the Act. Individuals and groups include:
- statutory stakeholders as set out by the Planning Act 2008 (such as National Highways, Natural England and the Environment Agency)
 - commercial stakeholders, including asset owners
 - local authorities (including host and neighbouring local authorities)
 - owners, tenants and occupiers of land potentially affected by the proposed DCO application.

5.4 Consultation materials

- 5.4.1 The consultation materials described in **Table 5.1** will be developed to help people understand the proposals for the Project and provide their feedback.

Table 5.1 – Consultation materials

Material	Description	Target audience
Project background document (2025)	<p>This document will provide a summary of the Project, including:</p> <ul style="list-style-type: none"> • the background to the Project • information about design changes as a result of the non-statutory consultation 	<p>All those interested in the consultation (see Section 5.3 for detail).</p> <p>This document will be published on the Project website and be available in paper copy on request, at the local information points listed in Table 5.2 and at public information events.</p>

Material	Description	Target audience
	<p>and localised non-statutory consultation</p> <ul style="list-style-type: none"> information about potential benefits and impacts of the Project how we might propose to mitigate any significant effects signposts for readers to find more detailed information and reports, and how to provide feedback on the Project. 	<p>National Grid will consider requests for copies of the document in alternative formats on a case-by-case basis, taking into account individual circumstances.</p>
<p>Community newsletter (February 2025)</p>	<p>A newsletter setting out the proposed Project information, details about the consultation, an overview map of the Project area and how to provide feedback, along with a list of engagement activities to be held throughout the consultation period.</p>	<p>All residents and businesses with property postcodes within the PCZ.</p> <p>The Community newsletter (February 2025) will be posted to all properties within the PCZ. It will be published on the Project website and be available as a paper copy on request, at the local information points listed in Table 5.2 and at public information events.</p> <p>National Grid will consider requests for copies of the document in alternative formats on a case-by-case basis, taking into account individual circumstances.</p>
<p>Preliminary environmental information report (PEIR)</p>	<p>The PEIR will contain a description of the Project, and a preliminary assessment of the likely significant environmental effects of the proposed Project, based on the initial information available at that time. It will also set out how we propose to reduce these effects and how we propose to maximise the benefits of the proposed Project.</p>	<p>All those interested in the consultation (see Section 5.3 for detail).</p> <p>The PEIR will be available on the Project website and be available to view in paper copy at public information events. It will also be available to view electronically via USB sticks available at local information points.</p> <p>The NTS will be available on the Project website and be available as a paper copy on</p>

Material	Description	Target audience
	A non-technical summary (NTS) of the PEIR will also be made available.	request, at the local information points listed in Table 5.2 and at public information events. Paper copies of the PEIR can be provided on request. This may be subject to a charge to cover printing and postage fees.
Design development report (2025)	An in-depth technical document detailing the work we have undertaken to date, focusing on work since the non-statutory consultation and localised non-statutory consultation.	All those interested in the consultation (see Section 5.3 for detail). This document will be available on the Project website, and be available to view in paper copy at public information events. Paper copies of the Design development report (2025) can be provided on request. This may be subject to a charge to cover printing and postage fees.
Strategic options report update (2025)	An updated overview of the appraisal approach we have used to date to consider strategic options. These are reviewed and backchecked as part of the ongoing strategic options assessment and decision-making process.	All those interested in the consultation (see Section 5.3 for detail). This document will be available on the Project website, and available to view in paper copy at public information events. Paper copies of the Strategic options report update (2025) can be provided on request. This may be subject to a charge to cover printing and postage fees
Non-statutory consultation feedback report (2025)	A summary of the feedback we received during the non-statutory consultation and localised non-statutory consultation stages which explains how we have had regard to comments.	All those interested in the consultation (see Section 5.3 for detail). This document will be available on the Project website. Paper copies of the Non-statutory consultation feedback report (2025) can be provided on request. This may

Material	Description	Target audience
Project maps and location plans	A series of maps and plans showing the extent of the Project, as per the 11 sections listed in Section 5.2 of this document.	<p>be subject to a charge to cover printing and postage fees.</p> <p>All those interested in the consultation (see Section 5.3 for detail).</p> <p>These will be made available on the Project website and at public information events.</p>
Consultation banners	A series of exhibition banners with information relating to the Project, which will be used at public information events.	<p>All those interested in the consultation (see Section 5.3 for detail). The consultation banners are primarily intended for use at public information events and will also be made available on the Project website.</p>
Interactive Project map	An interactive map of the Project.	<p>All those interested in the consultation (see Section 5.3 for detail).</p> <p>The interactive Project map will be made available on the Project website and on screen at the public information events, subject to technical constraints.</p>
Consultation notices	We will publish notices with details of the consultation, provided to statutory consultees as required under Section 47, 48 of the Act.	<p>All those interested in the consultation (see Section 5.3 for detail).</p> <p>These will be available on the Project website, in paper copy on request and at the local information points listed in Table 5.2.</p> <p>As required under Sections 47 and 48 of the Planning Act, the statutory notices will be published in local and national newspapers, along with the London Gazette, as necessary.</p>
Statement of Community Consultation (SoCC)	The SoCC sets out how National Grid intends to consult statutory consultees, stakeholders, affected residents, businesses and local	<p>All those interested in the consultation (see Section 5.3 for detail).</p> <p>The SoCC will be published on the Project website and be</p>

Material	Description	Target audience
	communities ahead of its application for development consent for the Project.	available in paper copy on request, at the local information points (for inspection only) listed in Table 5.2 and at public information events.
Feedback questionnaire	An online and paper feedback questionnaire to gather responses to the statutory consultation.	All those interested in the consultation (see Section 5.3 for detail). The feedback questionnaire will be available on the Project website, and be available in paper copy on request, at the local information points listed in Table 5.2 and at public information events. Paper copies can be returned free of charge using a Freepost address: Freepost NH TO HM.
Guide to Interacting with our Consultation Plans	A guide outlining the consultation maps and plans, and how to use them.	All those interested in the consultation (see Section 5.3 for detail). This document will be available on the Project website and in paper copy on request and at public information events.
Project website	An online site hosting all our Project information, including downloadable versions of all the above documents.	All those interested in the consultation (see Section 5.3 for detail). The Project website will be updated at key milestones throughout the pre-application stage.

- 5.4.2 National Grid will consider requests for copies of selected consultation materials identified in **Table 5.1** in alternative formats on a case-by-case basis, taking into account individual circumstances.
- 5.4.3 All consultation materials will also be available on the Project website. Information will be easy to access and will be presented in a variety of ways to suit user requirements.
- 5.4.4 **Table 5.2** sets out how we will make consultation documents available.

Table 5.2 – Methods to make consultation documents available

Activity	Detail
Project website	<p>All consultation documents will be hosted on the Project website throughout the consultation period. We will provide the following local authorities with a website link to all the consultation documents:</p> <ul style="list-style-type: none"> • East Riding of Yorkshire Council • North Lincolnshire Council • Bassetlaw District Council • Newark and Sherwood District Council • Nottinghamshire County Council. <p>Paper copies of selected consultation documents will also be available on request, free of charge. Paper copies of the PEIR can be provided on request. This may be subject to a charge to cover printing and postage fees.</p>
Local information points	<p>While it is no longer a statutory requirement, in addition to being available online, we will seek to ensure that paper copies of the Community newsletter (February 2025), Project background document (2025), NTS of the PEIR, SoCC and Feedback questionnaire are available to view at the locations listed below throughout the consultation period (subject to availability and agreement). Additionally, the full PEIR will be available to view electronically via USB sticks available at the local information points.</p> <ul style="list-style-type: none"> • Beverley Library, Champney Treasure House, Champney Road, Beverley, HU17 8HE. Opening hours: Monday, Wednesday and Friday (9:30am–4:30pm), Tuesday (9:30am–6:30pm), Saturday (9am–4pm), Thursday and Sunday (Closed) • South Cave Library, 97 Church Street, South Cave, HU15 2EP. Opening hours: Tuesday (2–5pm), Thursday (2–7pm), Saturday (10am–12pm) and Monday, Wednesday, Friday and Sunday (Closed) • Goole Library, Carlisle Street, Goole, DN14 5DS. Opening hours: Monday and Wednesday (9:30am–7pm), Tuesday, Thursday and Friday (9:30am–5pm), Saturday (9am–4pm) and Sunday (Closed) • Cottingham Library and Customer Service Centre, Market Green, Cottingham, HU16 5QG. Opening hours: Monday and Tuesday (9:30am–4pm), Thursday (9:30am–6:30pm), Friday (9:30am–1pm), Saturday (9:30am–12:30pm), Wednesday and Sunday (Closed) • Crowle Library, The Market Hall, Market Place, Crowle, DN17 4LA. Opening hours: Monday to Friday (9:30am–

Activity	Detail
	<p>12:30pm and 1–5pm), Saturday (9am–12pm) and Sunday (Closed)</p> <ul style="list-style-type: none"> • Haxey Library, The Memorial Hall, Haxey, DN9 2HH. Opening hours: Monday (2–5pm), Tuesday and Friday (9am–12pm), Thursday (2–4pm), Saturday (10am–1pm), Wednesday and Sunday (Closed) • Misterton Library, High Street, Misterton, DN10 4BU. Opening hours: Tuesday to Thursday (2–5pm), Saturday (9:30am–12:30pm), Monday, Friday and Sunday (Closed) • Retford Library, Churchgate, Retford, DN22 6PE. Opening hours: Monday to Friday (9am–6pm), Saturday (9am–3:30pm) and Sunday (Closed) • Bassetlaw District Council (Retford Office), 17B The Square, Retford, DN22 6DB³. Opening hours: Monday to Friday (9am–5pm), Saturday and Sunday (Closed) • Epworth Library, Live Well Isle of Axholme, Burnham Road, Epworth, DN9 1BZ. Opening hours: Monday to Friday (9am–5pm), Saturday (9am–4pm) and Sunday (12–6pm) • Gainsborough Library, Cobden Street, Gainsborough, DN21 2NG. Opening hours: Monday, Tuesday, Wednesday and Friday (9am–5pm), Thursday (9am–6pm), Saturday (9am–1pm) and Sunday (Closed) • All Saints Parish Church, High Street, Misterton, DN10 4AL. Opening hours: Monday to Sunday (10am–4pm) • Nottinghamshire Mobile Libraries (North Route 11). To find out when the mobile library is in your area, email ask@inspireculture.co.uk or call 01623 677 200. <p>It is advised that opening hours are checked in advance of visiting. We will check that consultation documentation remains at the local information points throughout the consultation period.</p> <p>We will also try to use local websites to act as local information points, by asking them to host a link to the Project website.</p> <p>These may include:</p> <ul style="list-style-type: none"> • local authority websites • local library websites • parish websites • MPs' websites.
Document requests	Following the launch of the statutory consultation, consultees will be able to request paper copies of consultation documents.

³ Bassetlaw District Council's Retford Office is operating from a temporary location until late-February 2025. For more information, visit the Council's website.

Activity	Detail
	<p>The documents that will be made available on request, free of charge, will be the:</p> <ul style="list-style-type: none"> • Community newsletter (February 2025) • Project background document (2025) • Feedback questionnaire • NTS of the PEIR. Requests for paper copies of the technical documents forming the PEIR will be reviewed on a case-by-case basis • SoCC. <p>Paper copies of other consultation documents will also be available on request. To cover printing costs a reasonable charge may apply, to be paid by the recipient, to a maximum value of £500 for the whole suite of consultation documents. Requests can be made by contacting us using the details provided in Section 6.1. We will also consider requests for alternative formats of documents on a case-by-case basis.</p>
Public information events	<p>Paper copies of the consultation documents will be available for review at public information events.</p> <p>More detail on the public events is available in Section 5.6.</p>

5.5 Promoting the consultation

- 5.5.1 Residents, local businesses and community organisations within the PCZ will be notified of the start of the consultation in a variety of ways, including through a Community newsletter, as outlined in Table 5.1. A map showing the PCZ (approximately 10,000 addresses) can be found in Appendix A.
- 5.5.2 A range of other methods will be used to promote the consultation to local communities, as set out in Table 5.3.

Table 5.3 – Promotion methods

Method	Detail
Press release	<p>A press release publicising the upcoming consultation and how the community can get involved will be issued ahead of the consultation. The distribution list is likely to include the following media:</p> <ul style="list-style-type: none"> • BBC East Yorkshire and Lincolnshire • ITV Calendar • BBC Radio Humberside • Hull Daily Mail

Method	Detail
Newspaper advertisements	<ul style="list-style-type: none"> • East Riding Mail • Yorkshire Post • BBC Radio Nottingham • Nottingham Post • BBC Radio Lincolnshire • Lincolnshire Echo/Live • The Lincolnite • The Goole Times • Worksop Guardian • Retford Times • Nottinghamshire Live. <p>We will advertise the statutory consultation, including how to access information about the proposals, how to provide feedback, and how people can take part in the consultation, in locally circulated newspapers and online.</p> <p>Advertisements will be placed in the following publications, to ensure coverage within and beyond the PCZ and SCZ:</p> <ul style="list-style-type: none"> • Hull Daily Mail • Yorkshire Post • Lincolnshire Echo/Live.
Emails and letters	<p>We will send, via email, letters details about the consultation and how to get involved to:</p> <ul style="list-style-type: none"> • MPs, where all or part of their constituencies lie within the PCZ and/or the SCZ • elected representatives within the PCZ, including at East Riding of Yorkshire Council, North Lincolnshire Council, Bassetlaw District Council, Newark and Sherwood District Council and Nottinghamshire County Council • parish councils within the PCZ and SCZ.
Statutory notices	<p>We will publish the section 47 notice in locally circulating newspapers and the section 48 notice once in a national newspaper and the London</p>

Method	Detail
Information posters	Gazette, and twice in locally circulating newspapers.
Social media	<p>We will produce posters that include details of the consultation, how to access Project information and how to get involved. These will be available online and a digital copy will be shared with stakeholders, including parish councils in the PCZ, to help raise awareness of consultation via their channels.</p> <p>We will promote the consultation on National Grid UK's X (formerly Twitter) account and on Facebook, @NationalGridUK.</p> <p>We will also develop a social media guide for local authorities to use on their social media channels which will include links to the Project website.</p> <p>We are unable to accept feedback through social media channels, however we will monitor comments or questions received through our own channels and respond where practicable. We will aim to point people towards sources of information, including the Project website and the interactive Project map, and to formal feedback channels.</p>

5.5.3 Any activity (or activities) that cannot be undertaken due to circumstances beyond our control will, where possible, be substituted with a similar activity (or activities) and advertised in local newspapers (via a press release) that circulate in the vicinity of the Project.

5.5.4 Any activity changes will also be published on the Project website and on National Grid UK's X (formerly Twitter) accounts and on Facebook @NationalGridUK.

5.6 Public information events

5.6.1 Public information events will be held for communities to find out about the Project and the consultation and to talk to representatives from the Project team. The events will be held at suitable, publicly accessible venues that are within or near the PCZ.

5.6.2 Details of where and when the public information events are proposed to be held are included in Table 5.4. This information will also be published on the Project website, in newspaper adverts, on social media and in the Community newsletter (February 2025) sent to all properties within the PCZ and available at local information points.

5.6.3 The events will be held during afternoons and early evenings in the week and at least one will be held on a weekend, where feasible.

- 5.6.4 Copies of all relevant consultation materials will be made available at each exhibition, including a series of boards to present the proposals for the Project, including maps.
- 5.6.5 Those attending the events will be encouraged to provide their feedback on the proposals for the Project via the online or paper feedback questionnaire.
- 5.6.6 Should any events (whether in person or webinars) need to be altered or cancelled for any reason, the most appropriate mitigation would be identified on a case-by-case basis in consultation with the relevant local planning authority or authorities.

Table 5.4 – Public information events

Date	Time	Venue
Saturday 1 March 2025	11am-4pm	Dunham on Trent Village Hall, Low Street, Dunham, NG22 0FJ
Monday 3 March 2025	1-7pm	Gringley on the Hill Community Centre, W Wells Lane, Gringley on the Hill, DN10 4QY
Tuesday 4 March 2025	1-7pm	North and South Wheatley Village Hall, Sturton Road, South Wheatley, DN22 9DL
Monday 10 March 2025	1-7pm	Crowle Community Hall, Woodland Avenue, Crowle, DN17 4LL
Friday 14 March 2025	1-7pm	All Saints Community Centre, Church Hill, South Cave, HU15 2EU
Saturday 15 March 2025	11am-4pm	Gilberdyke Memorial Hall, 11 Clementhorpe Road, Gilberdyke, HU15 2UB
Wednesday 19 March 2025	1-7pm	Garthorpe Village Hall, Shore Road, Garthorpe, DN17 4AD
Friday 21 March 2025	1-7pm	Epworth Imperial Hall, Chapel Street, Epworth, DN9 1HJ
Wednesday 26 March 2025	1-7pm	Cottingham Civic Hall, Market Green, Cottingham, HU16 5QF

5.7 Webinars

- 5.7.1 We will aim to hold six webinars during the consultation period. Some webinars will provide a general overview of the proposals, whilst others will be location-specific, allowing attendees to choose the session(s) of most interest. Details of the proposed webinars are included in Table 5.5.
- 5.7.2 Those interested will be able to sign up to the webinars via the Project website or by contacting National Grid by using the contact details set out in Section 6.1.
- 5.7.3 The sessions will cover the proposals in detail and provide an opportunity for attendees to ask questions of the project team.

- 5.7.4 National Grid will endeavour to make British Sign Language interpretation available for one of the general overview webinars, which will be recorded and published on the Project website.

Table 5.5 – Webinars

Date	Time	Topic
Tuesday 25 February 2025	6:30-7:30pm	General – Overview of the proposals
Thursday 6 March 2025	6:30-7:30pm	Route sections 1, 2 and 3
Tuesday 11 March 2025	6:30-7:30pm	Route sections 4, 5, 6 and 7
Thursday 13 March 2025	6:30-7:30pm	Route sections 8 and 9
Tuesday 18 March 2025	6:30-7:30pm	Route sections 10 and 11
Thursday 27 March 2025	2-3pm	General – Overview of the proposals

5.8 Stakeholder briefings and meetings

5.8.1 National Grid will offer briefings and/or meetings with the following stakeholders in the run-up to, or during the consultation:

- MPs, where all or part of their constituencies lie within either consultation zone
- elected representatives of district and county councils within the PCZ
- parish councils, where all or part of the parish falls within the PCZ
- host local authorities and neighbouring local authorities
- key prescribed consultees, such as Natural England and the Environment Agency
- persons with an interest in land (PILs) under Section 42(1)(d) of the Act.

5.8.2 National Grid will consider meetings with other organisations and individuals upon request.

5.9 Underrepresented and local interest groups

5.9.1 Our approach to consultation will be to reach out to groups that are underrepresented for the purposes of the Project and the organisations that represent them, as identified in discussions with local authorities and other stakeholders.

5.9.2 Our approach to engaging with underrepresented and local interest groups will consider the local requirements of identified groups.

5.9.3 A list of local interest groups, and organisations representing underrepresented groups, can be found in Appendix B.

5.9.4 In the first instance, all identified underrepresented groups and local interest groups will be contacted by letter at the launch of the consultation. They will be encouraged to request alternative formats of consultation materials, where appropriate.

- 5.9.5 We will maintain and update the list of underrepresented groups and local interest groups as the consultation progresses to ensure that we have the correct contact details and that we can engage with any newly identified groups.

Table 5.6 – Underrepresented group engagement tools

Group category	Methods to be used
Older people	<ul style="list-style-type: none"> • Directly mailing the Community newsletter (2025) to all properties within the PCZ, providing details of how to access digital and paper copies of other documents and how to provide feedback by post, if needed • providing options to submit feedback through conventional communication channels, including by post and telephone if necessary • face-to-face events at a variety of locations and times across the route • holding webinars for people unable to attend in-person events • considering alternative formats on a case-by-case basis • engaging with community groups serving the demographic • providing paper copies of materials at local information points, along with contact details of the Project team, who will be able to provide further assistance and send selected consultation documents to those who are unable to access the material online.
People with visual impairments	<ul style="list-style-type: none"> • Providing, on request, an audio guide of consultation banners • considering alternative formats on a case-by-case basis • providing options to enlarge text on the Project’s website.
People with limited mobility/disability	<ul style="list-style-type: none"> • Providing options to submit feedback through conventional communication channels, including by post and telephone if necessary • directly mailing the Community newsletter (February 2025) to all properties within the PCZ, and providing details of how to access digital and paper copies of other documents and how to provide feedback by post, if needed • providing online engagement opportunities through the Project website and webinars to negate the need for travel • considering alternative formats on a case-by-case basis • holding accessible face-to-face public information events at a variety of locations and times, across the route of the Project • running virtual webinar sessions for those with further questions, featuring a booking system which will take into consideration individual needs

Group category	Methods to be used
Youth groups	<ul style="list-style-type: none"> endeavouring to provide a British Sign Language interpreter at one of our webinars. Providing online engagement and providing access to the Project website ensuring social media and newspaper advertising across the PCZ, SCZ and further afield holding face-to-face public information events at a variety of locations and times across the route of the Project contacting local centres of education to offer engagement opportunities.
Carers and families with young children	<ul style="list-style-type: none"> Directly mailing the Community newsletter (February 2025) to all properties within the PCZ, and providing details of how to access digital and paper copies of other documents and how to provide feedback by post if needed providing options to engage through conventional and digital channels, to provide flexibility holding face-to-face public information events at a variety of locations and times across the route of the Project providing online engagement opportunities through the Project website and webinars to negate the need for travel ensuring social media and newspaper advertising across the PCZ, SCZ and further afield.
Economically inactive individuals	<ul style="list-style-type: none"> Encouraging online engagement ensuring social media and newspaper advertising across the PCZ, SCZ and further afield offering options to engage through conventional and digital channels, to provide flexibility.
Geographically isolated individuals or communities	<ul style="list-style-type: none"> Directly mailing the Community newsletter (February 2025) to all properties within the PCZ, and providing details of how to access digital and paper copies of other documents and how to provide feedback by post if needed holding face-to-face public information events at a variety of locations and times across the route of the Project providing online engagement opportunities through the Project website and webinars to negate the need for travel ensuring social media and newspaper advertising across the PCZ, SCZ and further afield.

Group category	Methods to be used
Locally underrepresented minority ethnic groups (such as black, Asian and minority ethnicity)	<ul style="list-style-type: none"> • Emailing community groups representing underrepresented minority ethnic groups to offer engagement opportunities.
People with English as an additional language (EAL)	<ul style="list-style-type: none"> • Endeavouring to provide consultation materials in alternative languages, upon reasonable request.
Travellers	<ul style="list-style-type: none"> • Contacting community groups representing travellers to offer engagement opportunities • trying to engage with traveller communities through the local authorities, should liaison officers be available • ensuring social media and newspaper advertising across the PCZ, SCZ and further afield.
Digitally isolated	<ul style="list-style-type: none"> • Reaching out by email or telephone to community groups representing digitally isolated groups to offer engagement opportunities • directly mailing the Community newsletter (February 2025) to all properties within the PCZ, and providing details of how to access digital and paper copies of other documents and how to provide feedback by post if needed • advertising the consultation in traditional media such as local newspapers circulating in the PCZ and SCZ • providing paper copies of materials at local information points, along with contact details for the Project team, who will be able to provide further assistance and send selected consultation documents to those who are unable to access the material online.

6. Responding to the consultation

6.1 Methods of responding

6.1.1 People will be able to submit their feedback on the proposals for the Project across the eight-week statutory consultation period.

This can be done by:

- completing the feedback questionnaire online via the Project website (www.nationalgrid.com/nh-hm)
- providing feedback by email (contact@hn-hm.nationalgrid.com)
- completing a paper feedback questionnaire, which can be provided on request, at one of the designated public information points or completed in person at the face-to-face events. The questionnaire can be returned free of charge using the Freepost address: Freepost NH TO HM (no stamp required).

6.1.2 Consultation responses received via any other method than those listed above, such as through social media, may not be formally recorded as part of the consultation.

6.1.3 Responses given orally, such as via telephone (0808 189 1346), will be considered in exceptional circumstances on a case-by-case basis, if someone may not otherwise be able to respond to the consultation.

6.1.4 All responses must be submitted by **11.59pm** on the closing date. Feedback submissions sent via post will be accepted for up to five working days after this date.

6.1.5 All feedback will be handled in accordance with all applicable laws concerning the protection of personal data, including the UK General Data Protection Regulation (GDPR).

6.1.6 Responses may also be made public as part of the Consultation report submitted as part of our DCO application.

6.1.7 More information on how National Grid will use the information collected about respondents will be made available in the consultation feedback questionnaire and on the Project website during the consultation period.

6.2 Providing consultation feedback on the substations

6.2.1 As the Birkhill Wood and High Marnham substations are included in the statutory consultation for the Project, there will be the opportunity to provide feedback in response to this statutory consultation. Where feedback regarding the substations is received in response to this statutory consultation, this will be analysed and reviewed in the same way as all other feedback. In addition, feedback received about the substations will also be shared with the relevant substation teams responsible for preparing the separate planning applications for these substations.

6.2.2 In terms of the separate planning applications for each of the substations, once the planning applications have been submitted to the relevant local planning authorities, members of the public and stakeholders may submit comments directly to the relevant

local planning authority. Once planning application reference numbers have been provided by the local planning authorities, we will provide an update on the Project website.

6.3 Reporting on consultation feedback received

- 6.3.1 After the consultation closes, the feedback will be reviewed and analysed to understand key themes and concerns. A summary of the feedback will be presented in a Consultation report submitted as part of the DCO application.
- 6.3.2 The proposed DCO application will be finalised, taking into consideration the feedback received from the consultation in accordance with Section 49 of the Planning Act.
- 6.3.3 A Consultation report will be produced as part of the application for a DCO, as required by Section 37(3)(c) of the Act. The report will include a summary of the consultation process undertaken in accordance with this SoCC, and will set out how the feedback from the consultation has shaped and influenced the proposals as submitted within the application for a DCO.
- 6.3.4 Responses to the consultation and extracts of responses may be published as part of the report. Any responses that are published will have all personal details redacted.
- 6.3.5 Upon receipt of an application for a DCO, the Planning Inspectorate will decide whether the application meets the required standards to proceed to examination and will determine whether the statutory consultation process has been adequate. As part of this process, local authorities will be invited to provide an 'adequacy of the consultation response' to the Planning Inspectorate.
- 6.3.6 The Consultation report will be available online, alongside other application documents, once an application for a DCO has been accepted. Paper copies will be available from the Project team on request and may be subject to a charge to cover printing and postage fees.

6.4 Further consultation

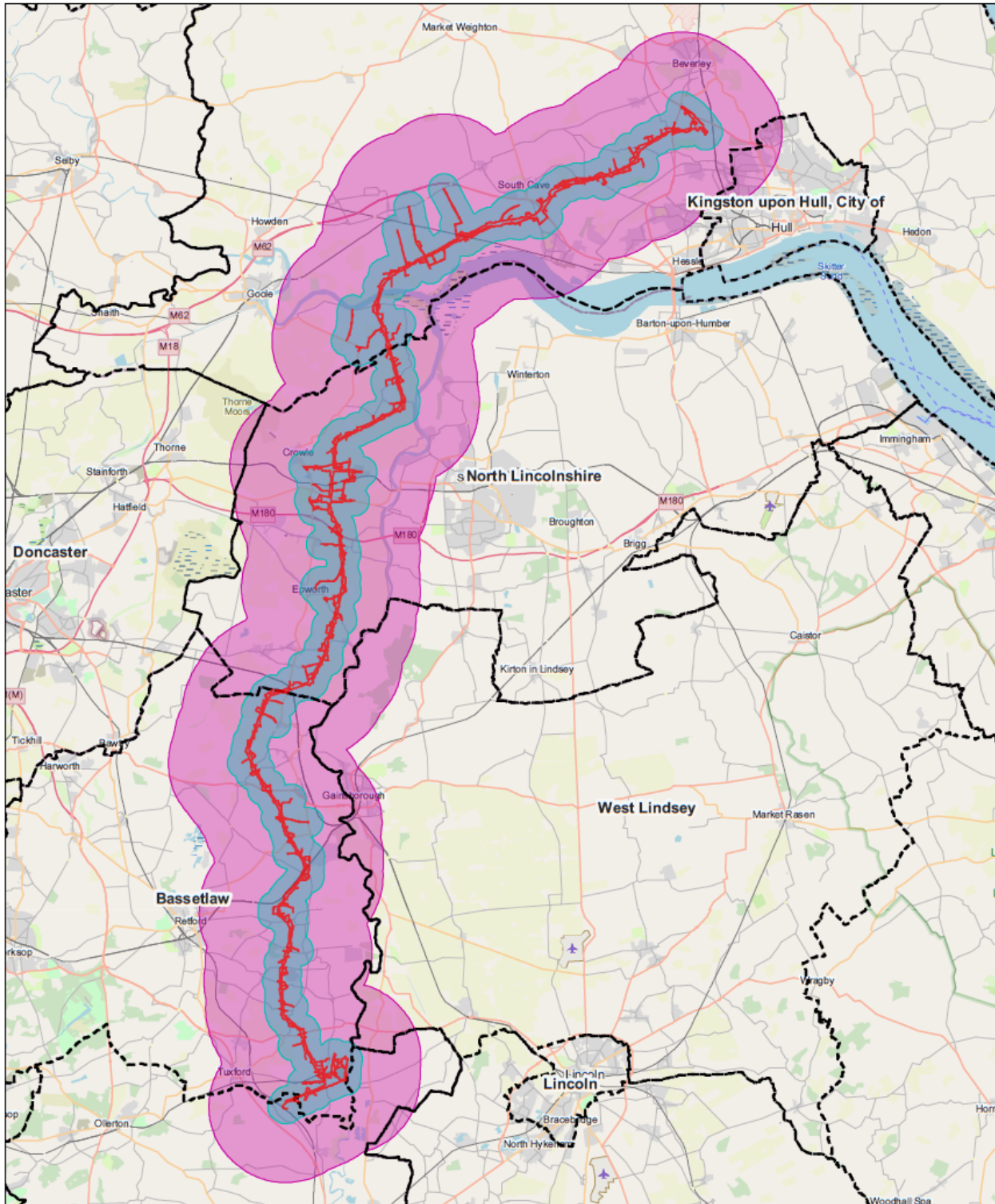
- 6.4.1 If, following the statutory consultation, National Grid considers it is necessary to undertake further statutory consultation, this would be undertaken, so far as relevant, practicable and proportionate, in accordance with the principles and methods set out in this SoCC or any update to it.

7. Other developers' consultations

- 7.1.1 The Project team is aware of a number of other planned and proposed developments in the area and continues to monitor and engage with these.
- 7.1.2 The PEIR published as part of the statutory consultation will identify relevant existing and/or approved developments which will be considered for cumulative impact assessment through the EIA process.
- 7.1.3 You can find out more about National Grid's proposed separate planning applications for the new Birkhill Wood and High Marnham National Grid substations in Section 2 of this SoCC.
- 7.1.4 National Grid will continue to work to understand other local projects to ensure that the scope and context of this proposed Project is clear in relation to the other consultations.

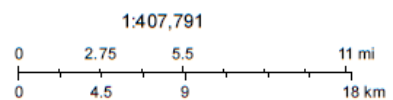
Appendix A

Primary consultation zone and secondary consultation zone



17/01/2025

- Draft order limits
- Local authority boundaries
- Primary consultation zone
- Secondary consultation zone



Map data © OpenStreetMap contributors, Microsoft, Facebook, Inc. and its affiliates, Esri Community Maps contributors, Map layer by Esri

Appendix B

Local interest groups

Windmill Walkers (Ramblers)
Beverly Ramblers
Ramblers Lincolnshire
Haxey Walkers
Guided Rides North Lincs
Retford & District Wheelers
Walking the Way to Health (East Riding of Yorkshire Council)
East Yorkshire Long Distance Walkers
East Yorkshire CTC
The Ramblers Group
Sustrans
Lincolnshire Ramblers
Scunthorpe Ramblers
Gainsborough Ramblers
Lincolnshire Walking Group
East Yorkshire Cycling UK
Retford Ramblers
Yorkshire Wolds Way Partnership
North Lincs Riding Club
South Humber Riding Club
Sport England
Cycling UK Lincolnshire
Darlton Gliding Club
Retford Golf Club
Milfield Golf Complex
Hessle Golf Club
Beverly RUFC
Beckingham and Saundby History Group
Retford u3a
Crowle Peatland Railway
Swanland u3a
Cottingham Local History Society
North Leverton Windmill
Swanland Village Organisations
We Live Here – Haxey
Eastoft Community Information
Epworth Community Wellbeing Hub
East Riding Leisure: South Cave
Bassetlaw Action Centre
Bassetlaw Community and Voluntary Service
Rural Action Community Action Nottinghamshire

Fledgelings Pre-School
Dot Spiritual Centre
Bassetlaw Youth Council
Manor Holiday Park, Retford
Open Spaces Society
Microflight Aviation
University of Hull
Hull College
East Riding College
North Lindsey College
Gainsborough College
Humber Education Trust
Humber Learning Consortium
EDTEC Humber
National Education Union (North Lincs District)
North Lincs Council Adult Education and Community Learning
Engineering UTC Northern Lincolnshire
Rampton Primary School
Sundown Adventureland
North Leverton Boarding Kennels & Cattery
Leverton CofE Academy
Sturton CofE School
Dunham-on-Trent CofE Primary School
North Clifton Primary School
Hull and Humber Chamber of Commerce – Northern Lincolnshire
Federation of Small Businesses
Confederation of British Industry
Hull and East Yorkshire Local Enterprise Partnership
Greater Lincolnshire LEP
Social Enterprise Yorkshire and Humber
Invest in North Lincolnshire
Invest Humber
Invest Gainsborough
Cottingham and District Traders Association
Invest East Riding
Business Lincolnshire
D2N2 Local Enterprise Partnership (Nottinghamshire)
Visit North Lincolnshire
Visit East Yorkshire
Lindsey AgeUK
SSAFA Lincolnshire
Supporting Older People
East Riding Health and Wellbeing
Beverley Leisure Group
The Countryside Charity Nottinghamshire
MySight Notts

Lincoln and Lindsey Blind Society
North Lincolnshire Youth Council
North Lincolnshire Special Educational Needs and Disability (SEND)
North Lincolnshire Autism Spectrum Education Team (ASET)
North Lincolnshire Dementia Action Alliance
Alzheimer's Society – North and North East Lincolnshire
Lincolnshire Jewish Community
Hull Mosque and Islamic Centre
Hull Hebrew Congregation
Lincolnshire Autistic Society
Hull and East Riding LGBTQIA+ Forum
CARE
Lincolnshire Jewish Community
JUST Lincolnshire
Humber, Coast and Vale Health and Care Partnership
Humber Transforming Care Partnership (TCP)
Gainsborough Healthcare Group

PAGE INTENTIONALLY BLANK

National Grid plc
National Grid House,
Warwick Technology Park,
Gallows Hill, Warwick.
CV34 6DA United Kingdom

Registered in England and Wales
No. 4031152
nationalgrid.com