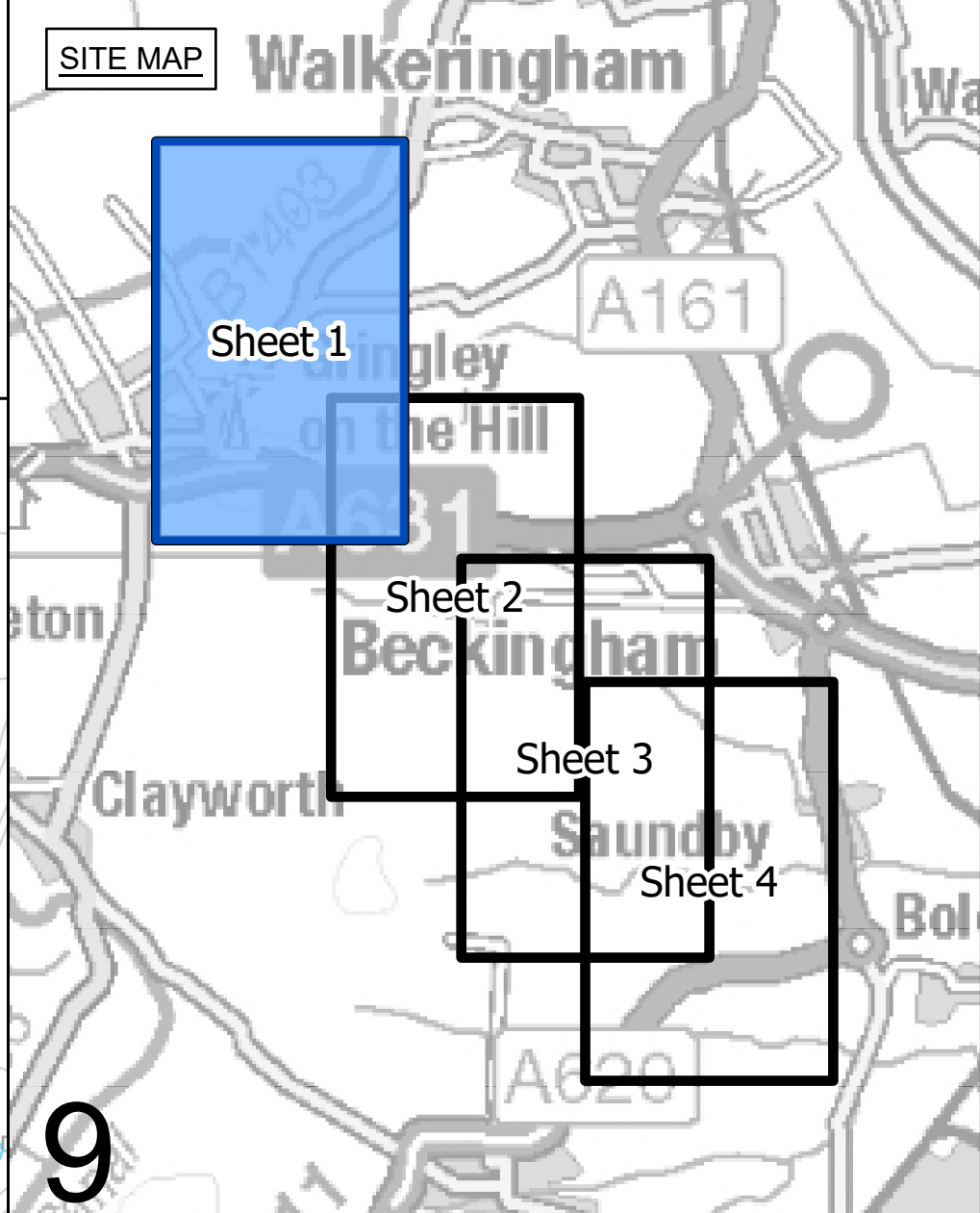
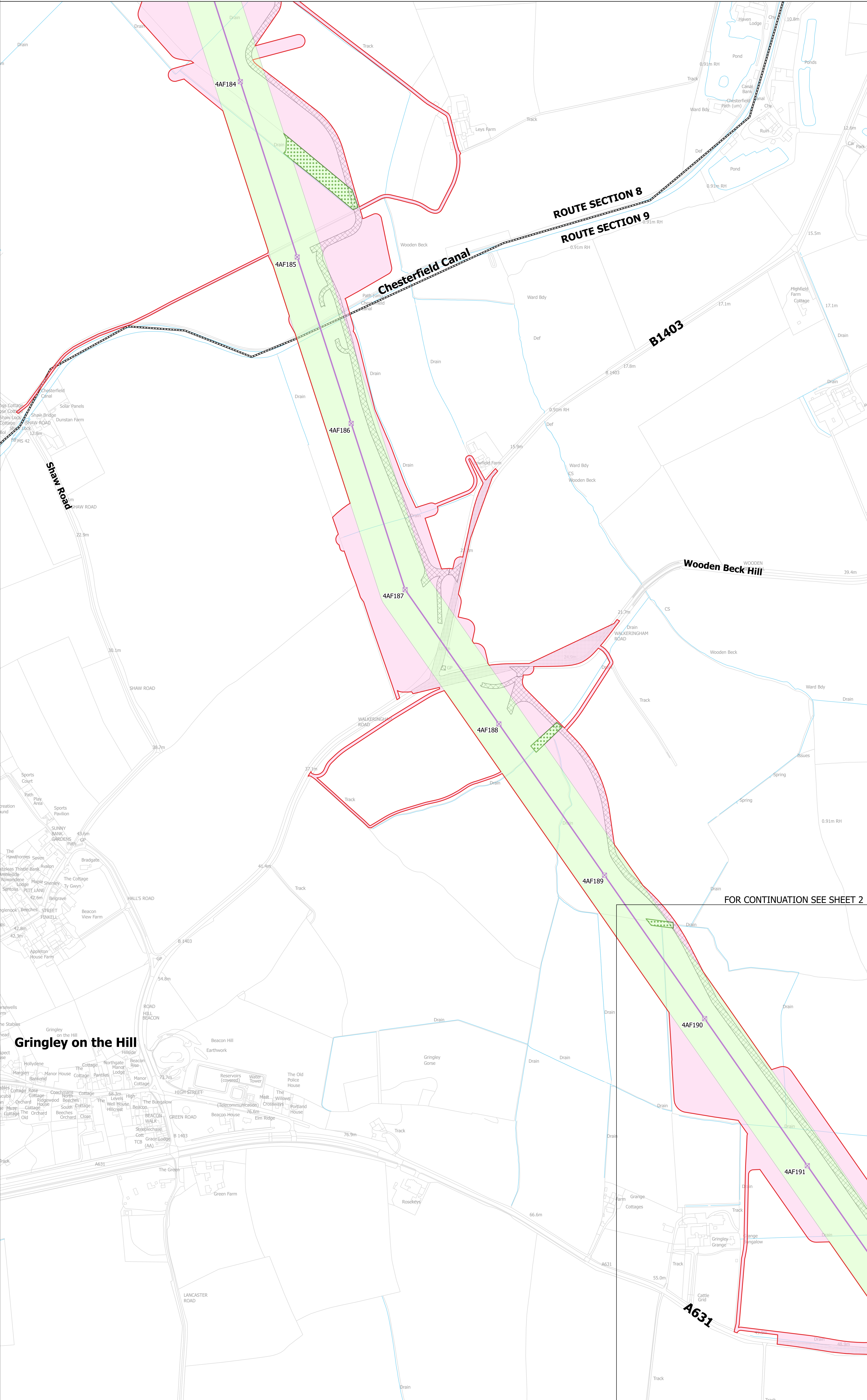


NATIONAL GRID
 NORTH HUMBER TO HIGH MARNHAM
 S.42 CONSULTATION PLAN SERIES
 ROUTE SECTION 9 (SHEET 1 OF 4)
 BASSETLAW DISTRICT COUNCIL

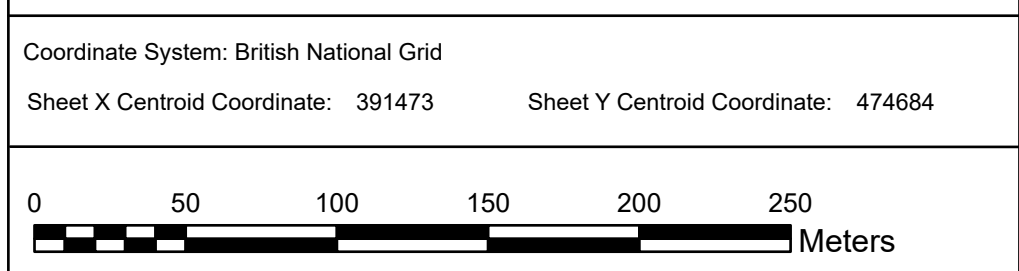


- LEGEND**
- ROUTE SECTION BOUNDARY
 - SHEET INDEX CUTLINES
 - INDICATIVE ZONE FOR PERMANENT ASSETS
 - INDICATIVE ZONE FOR CONSTRUCTION, OPERATION & MAINTENANCE
 - INDICATIVE NEW LATTICE PYLON
 - INDICATIVE NEW OVERHEAD LINE (OHL)
 - DRAFT ORDER LIMITS
 - INDICATIVE ACCESS ROUTE
 - INDICATIVE VISIBILITY SPREAD
 - INDICATIVE CONSTRUCTION COMPOUND
 - INDICATIVE ENVIRONMENTAL PLANTING



FOR CONTINUATION SEE SHEET 2

Notes
 This drawing is scaled at paper size A0, therefore any prints taken at smaller sizes will affect accuracy of the measurement units and should not be scaled against.



BACKGROUND MAPPING INFORMATION HAS BEEN REPRODUCED FROM THE ORDNANCE SURVEY BY PERMISSION OF ORDNANCE SURVEY OF THE CONTROLLER OF HIS MAJESTY'S STATIONERY OFFICE. CROWN COPYRIGHT ORDNANCE SURVEY ©. BLUESKY INTERNATIONAL LTD ©. NATIONAL GRID ELECTRICITY - 100024241.

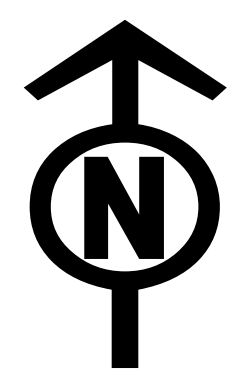
Issue	Date	Remarks	Drawn	Checked	Approved
A	FEBRUARY 2025	FOR STATUTORY CONSULTATION	MG	MH	TF

Title
 NATIONAL GRID
 NORTH HUMBER TO HIGH MARNHAM
 S.42 CONSULTATION PLAN SERIES
 ROUTE SECTION 9 (SHEET 1 OF 4)
 BASSETLAW DISTRICT COUNCIL

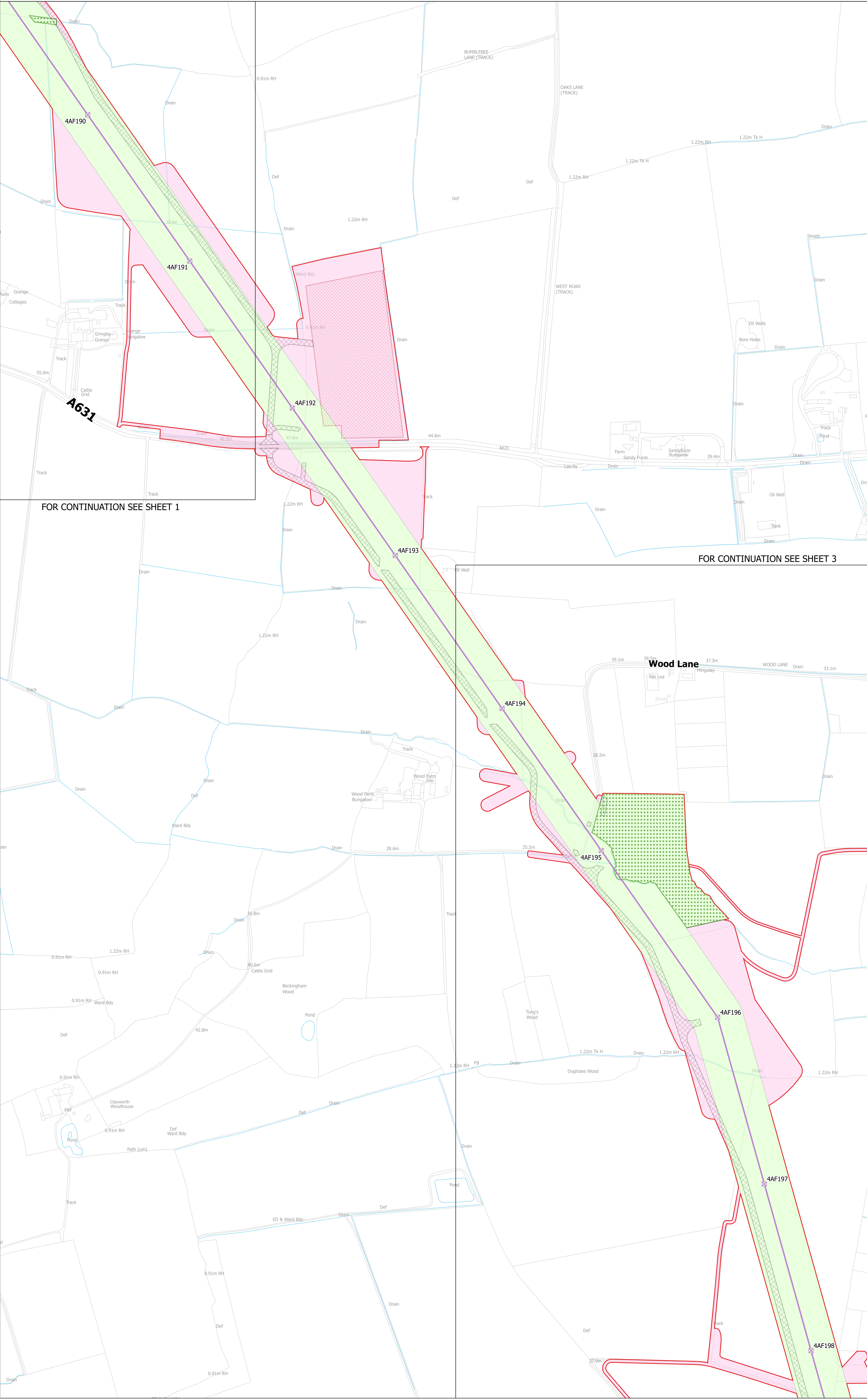
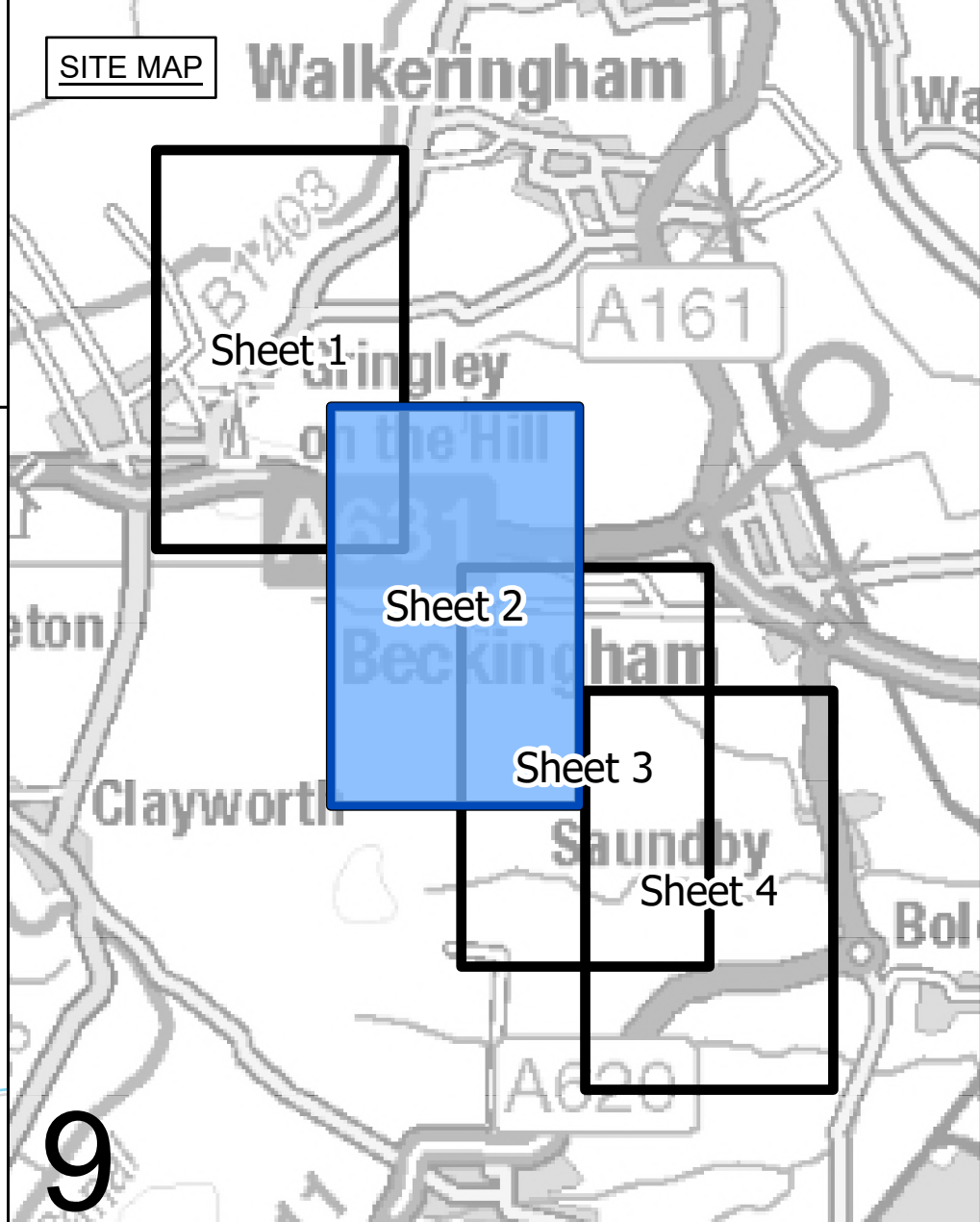
nationalgrid
 Application Number: EN020034

National Grid Drawing Reference: NHHM-NG-ENG-PLN-0020

Scale	Sheet Size	Sheet	Issue
1:2,500	A0	SHEET 1 OF 4	A



NATIONAL GRID
 NORTH HUMBER TO HIGH MARNHAM
 S.42 CONSULTATION PLAN SERIES
 ROUTE SECTION 9 (SHEET 2 OF 4)
 BASSETLAW DISTRICT COUNCIL

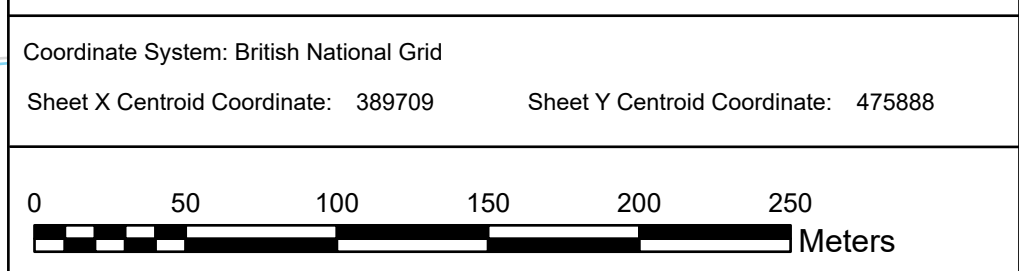


- LEGEND**
- ROUTE SECTION BOUNDARY
 - SHEET INDEX CUTLINES
 - INDICATIVE ZONE FOR PERMANENT ASSETS
 - INDICATIVE ZONE FOR CONSTRUCTION, OPERATION & MAINTENANCE
 - INDICATIVE NEW LATTICE PYLON
 - INDICATIVE NEW OVERHEAD LINE (OHL)
 - DRAFT ORDER LIMITS
 - INDICATIVE ACCESS ROUTE
 - INDICATIVE VISIBILITY SPLAY
 - INDICATIVE CONSTRUCTION COMPOUND
 - INDICATIVE ENVIRONMENTAL PLANTING

FOR CONTINUATION SEE SHEET 1

FOR CONTINUATION SEE SHEET 3

Notes
 This drawing is scaled at paper size A0, therefore any prints taken at smaller sizes will affect accuracy of the measurement units and should not be scaled against.



BACKGROUND MAPPING INFORMATION HAS BEEN REPRODUCED FROM THE ORDNANCE SURVEY BY PERMISSION OF ORDNANCE SURVEY OF THE CONTROLLER OF HIS MAJESTY'S STATIONERY OFFICE. CROWN COPYRIGHT ORDNANCE SURVEY © BLUESKY INTERNATIONAL LTD © NATIONAL GRID ELECTRICITY - 100024241.

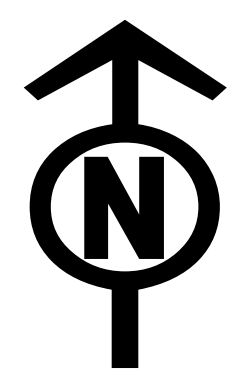
A	Issue Date	FOR STATUTORY CONSULTATION	MG	MH	TF

Title
 NATIONAL GRID
 NORTH HUMBER TO HIGH MARNHAM
 S.42 CONSULTATION PLAN SERIES
 ROUTE SECTION 9 (SHEET 2 OF 4)
 BASSETLAW DISTRICT COUNCIL

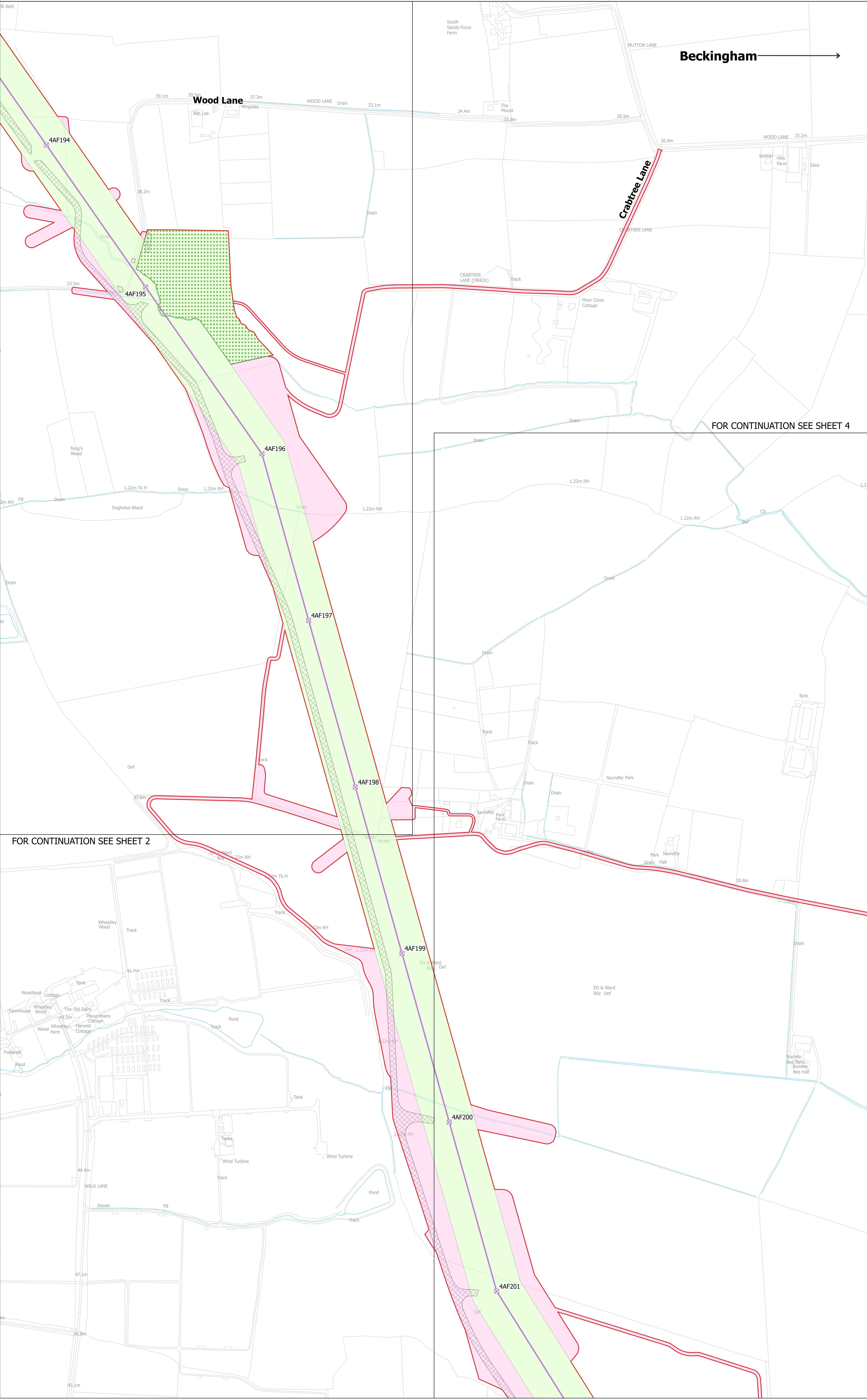
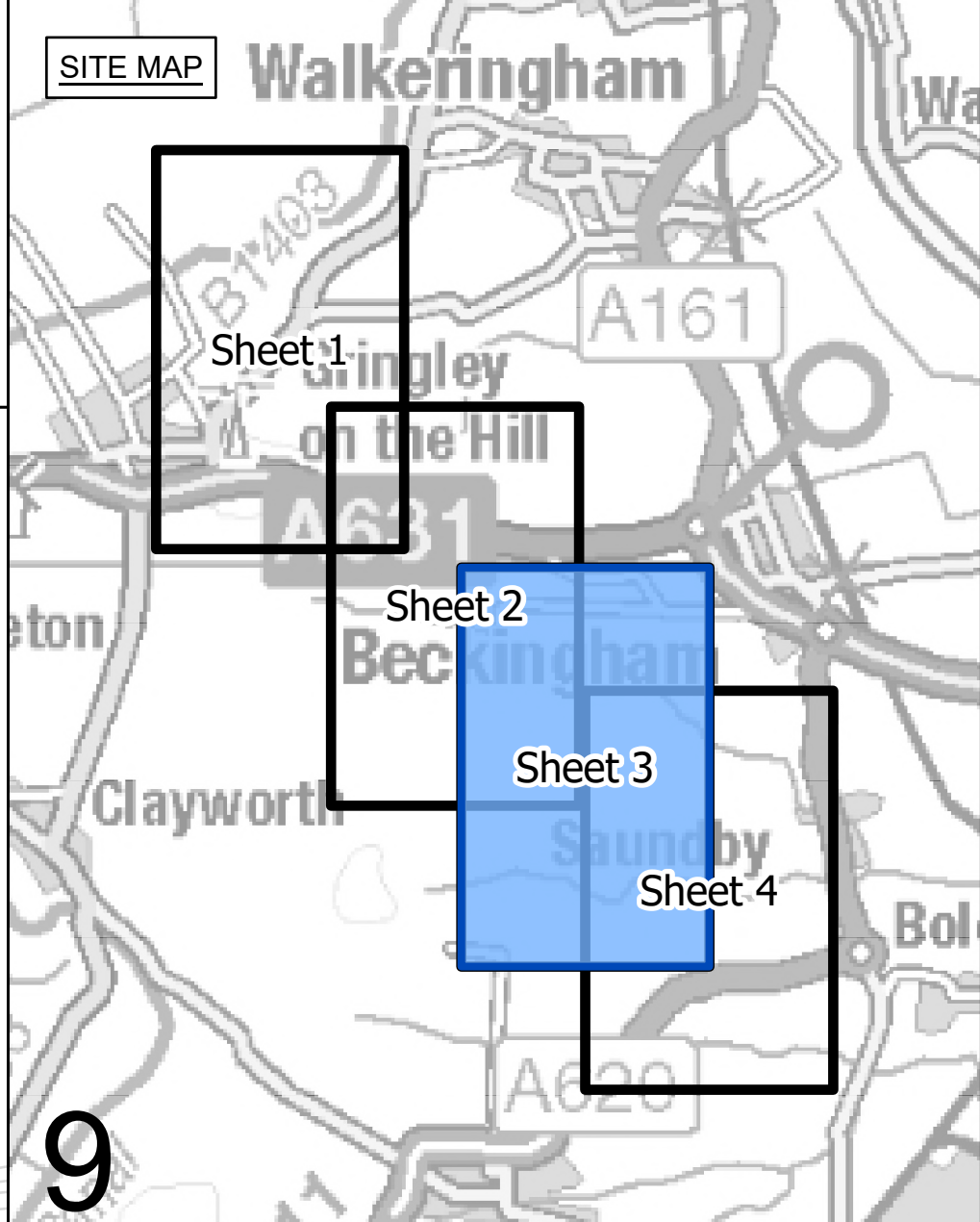
nationalgrid
 Application Number: EN020034

National Grid Drawing Reference: NHHM-NG-ENG-PLN-0020

Scale	Sheet Size	Sheet	Issue
1:2,500	A0	SHEET 2 OF 4	A



NATIONAL GRID
 NORTH HUMBER TO HIGH MARNHAM
 S.42 CONSULTATION PLAN SERIES
 ROUTE SECTION 9 (SHEET 3 OF 4)
 BASSETLAW DISTRICT COUNCIL



Beckingham →

FOR CONTINUATION SEE SHEET 4

FOR CONTINUATION SEE SHEET 2

- LEGEND**
- ROUTE SECTION BOUNDARY
 - SHEET INDEX CUTLINES
 - INDICATIVE ZONE FOR PERMANENT ASSETS
 - INDICATIVE ZONE FOR CONSTRUCTION, OPERATION & MAINTENANCE
 - INDICATIVE NEW LATTICE PYLON
 - INDICATIVE NEW OVERHEAD LINE (OHL)
 - DRAFT ORDER LIMITS
 - INDICATIVE ACCESS ROUTE
 - INDICATIVE VISIBILITY SPLAY
 - INDICATIVE CONSTRUCTION COMPOUND
 - INDICATIVE ENVIRONMENTAL PLANTING

Notes
 This drawing is scaled at paper size A0, therefore any prints taken at smaller sizes will affect accuracy of the measurement units and should not be scaled against.

Coordinate System: British National Grid
 Sheet X Centroid Coordinate: 388602 Sheet Y Centroid Coordinate: 476784

0 50 100 150 200 250 Meters

BACKGROUND MAPPING INFORMATION HAS BEEN REPRODUCED FROM THE ORDNANCE SURVEY BY PERMISSION OF ORDNANCE SURVEY OF THE CONTROLLER OF HIS MAJESTY'S STATIONERY OFFICE. CROWN COPYRIGHT ORDNANCE SURVEY © BLUESKY INTERNATIONAL LTD © NATIONAL GRID ELECTRICITY - 100024241.

A	FEBRUARY 2025	FOR STATUTORY CONSULTATION	MG	MH	TF
Issue	Date	Remarks	Drawn	Checked	Approved

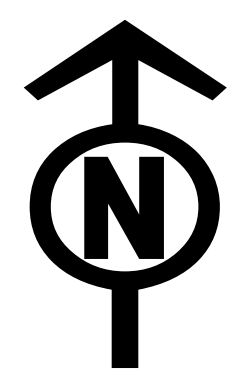
Title
 NATIONAL GRID
 NORTH HUMBER TO HIGH MARNHAM
 S.42 CONSULTATION PLAN SERIES
 ROUTE SECTION 9 (SHEET 3 OF 4)
 BASSETLAW DISTRICT COUNCIL

nationalgrid

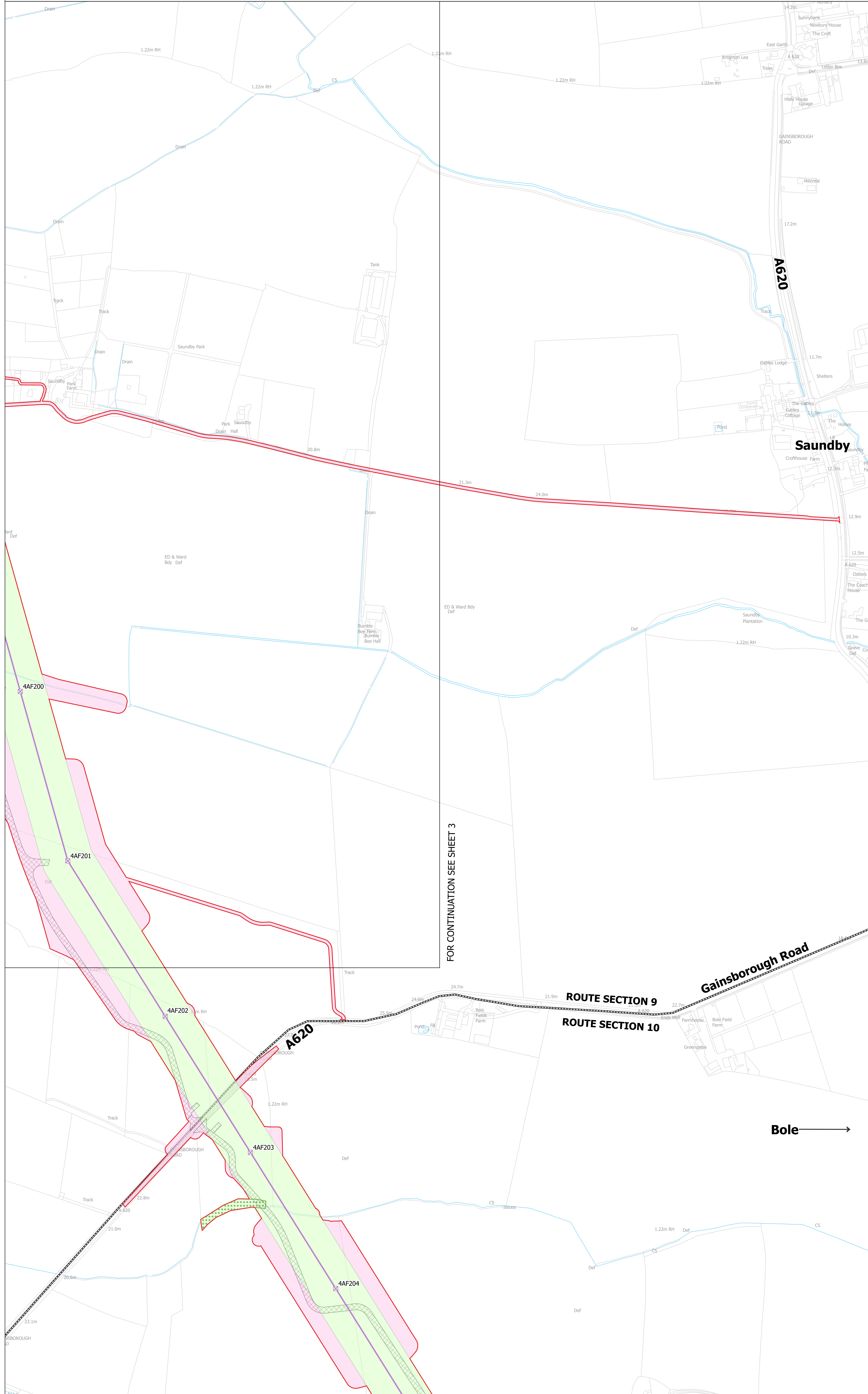
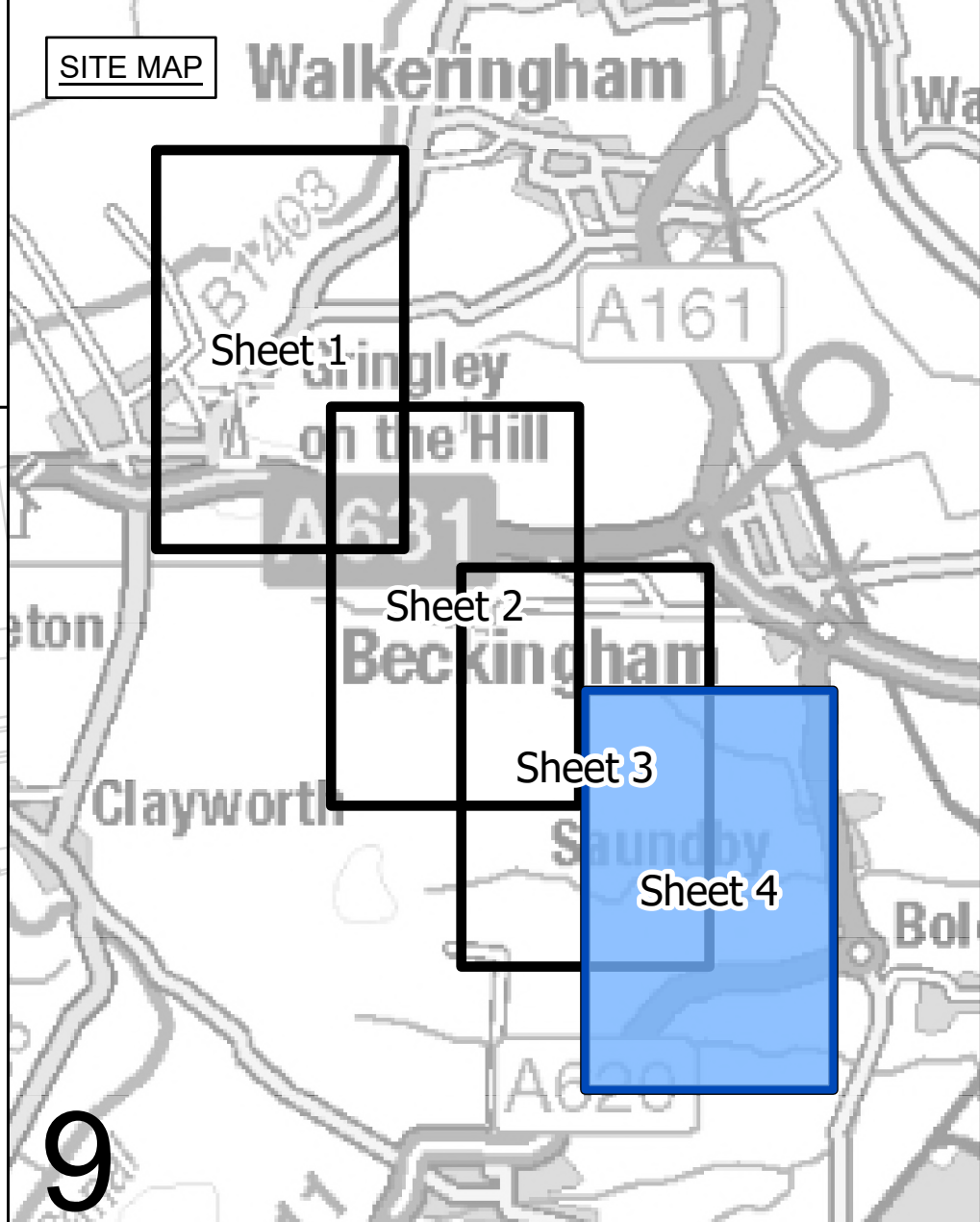
Application Number: EN020034

National Grid Drawing Reference: NHHM-NG-ENG-PLN-0020

Scale	Sheet Size	Sheet	Issue
1:2,500	A0	SHEET 3 OF 4	A



NATIONAL GRID
 NORTH HUMBER TO HIGH MARNHAM
 S.42 CONSULTATION PLAN SERIES
 ROUTE SECTION 9 (SHEET 4 OF 4)
 BASSETLAW DISTRICT COUNCIL



- LEGEND**
- ROUTE SECTION BOUNDARY
 - SHEET INDEX CUTLINES
 - INDICATIVE ZONE FOR PERMANENT ASSETS
 - INDICATIVE ZONE FOR CONSTRUCTION, OPERATION & MAINTENANCE
 - INDICATIVE NEW LATTICE PYLON
 - INDICATIVE NEW OVERHEAD LINE (OHL)
 - DRAFT ORDER LIMITS
 - INDICATIVE ACCESS ROUTE
 - INDICATIVE VISIBILITY SPLAY
 - INDICATIVE CONSTRUCTION COMPOUND
 - INDICATIVE ENVIRONMENTAL PLANTING

FOR CONTINUATION SEE SHEET 3

ROUTE SECTION 9
 ROUTE SECTION 10

Gainsborough Road

Bole →

Notes
 This drawing is scaled at paper size A0, therefore any prints taken at smaller sizes will affect accuracy of the measurement units and should not be scaled against.

Coordinate System: British National Grid
 Sheet X Centroid Coordinate: 387755 Sheet Y Centroid Coordinate: 477636



BACKGROUND MAPPING INFORMATION HAS BEEN REPRODUCED FROM THE ORDNANCE SURVEY BY PERMISSION OF ORDNANCE SURVEY OF THE CONTROLLER OF HIS MAJESTY'S STATIONERY OFFICE. CROWN COPYRIGHT ORDNANCE SURVEY ©. BLUESKY INTERNATIONAL LTD ©. NATIONAL GRID ELECTRICITY - 100024241.

A	FEBRUARY 2025	FOR STATUTORY CONSULTATION	MG	MH	TF
Issue	Date	Remarks	Drawn	Checked	Approved

Title
 NATIONAL GRID
 NORTH HUMBER TO HIGH MARNHAM
 S.42 CONSULTATION PLAN SERIES
 ROUTE SECTION 9 (SHEET 4 OF 4)
 BASSETLAW DISTRICT COUNCIL

nationalgrid
 Application Number: EN020034

National Grid Drawing Reference: NHHM-NG-ENG-PLN-0020

Scale	Sheet Size	Sheet	Issue
1:2,500	A0	SHEET 4 OF 4	A