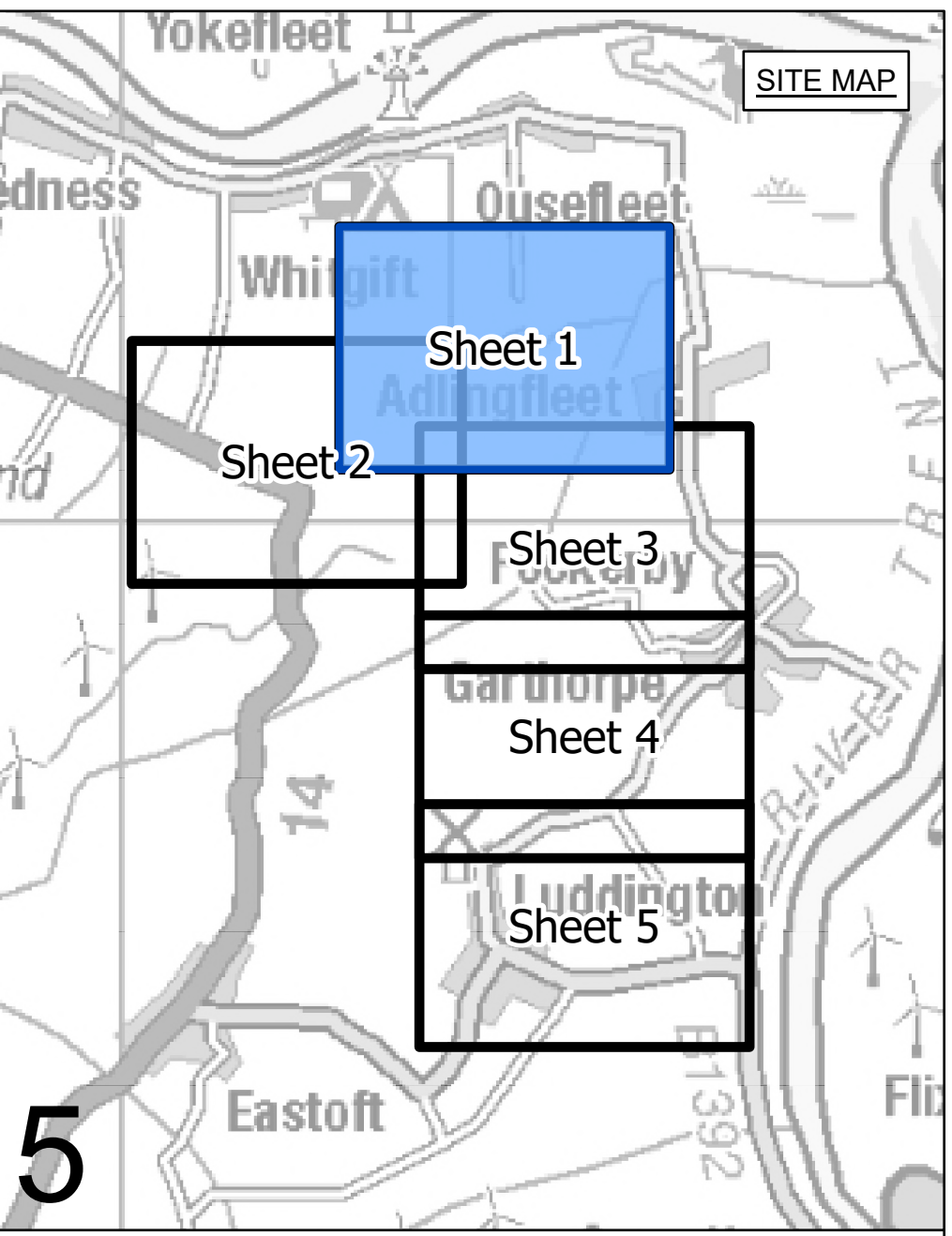
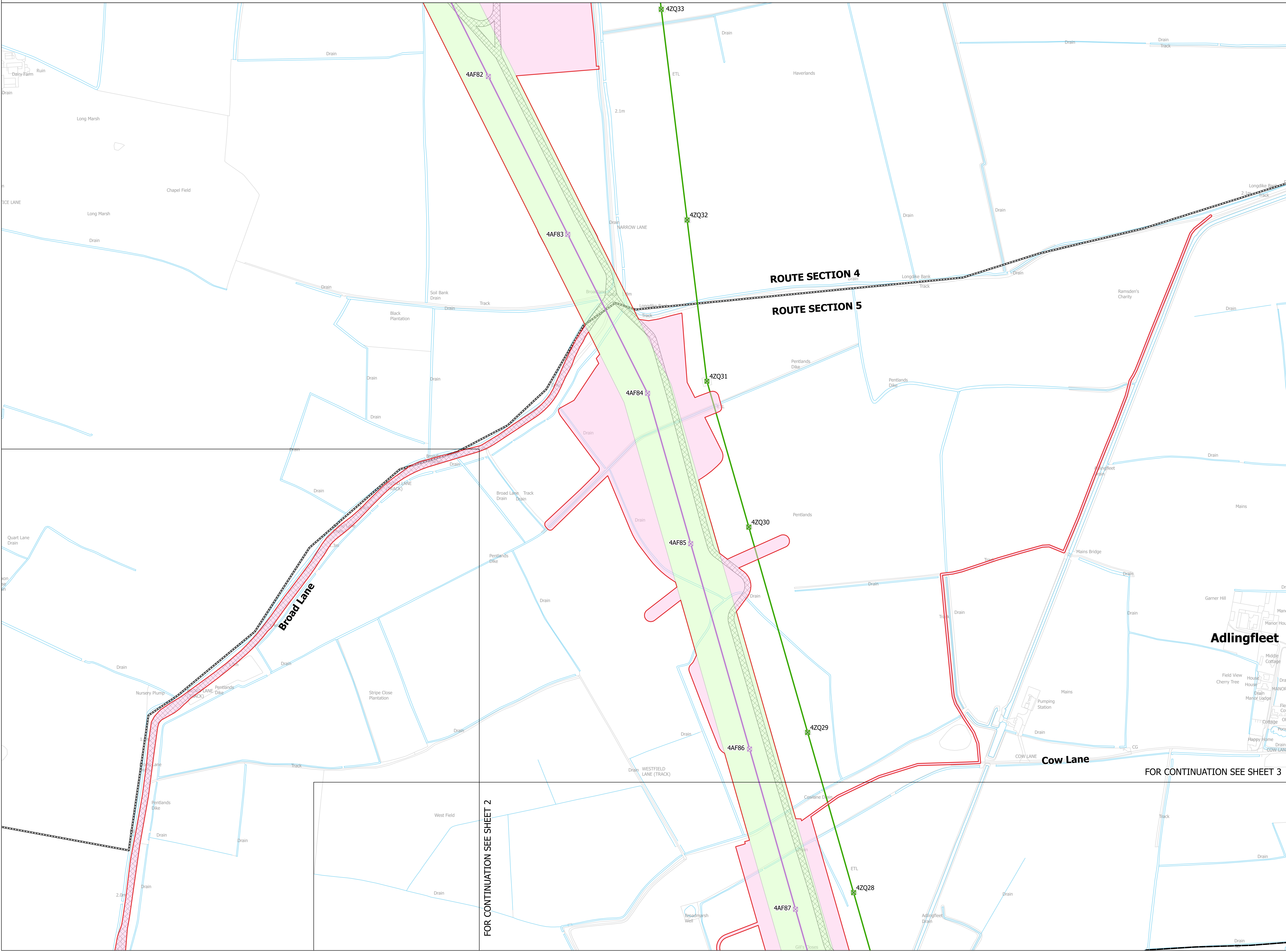


NATIONAL GRID  
 NORTH HUMBER TO HIGH MARNHAM  
 S.42 CONSULTATION PLAN SERIES  
 ROUTE SECTION 5 (SHEET 1 OF 5)  
 EAST RIDING OF YORKSHIRE COUNCIL



- 5**
- LEGEND**
- LOCAL AUTHORITY BOUNDARY
  - ROUTE SECTION BOUNDARY
  - SHEET INDEX CUTLINES
  - INDICATIVE ZONE FOR PERMANENT ASSETS
  - INDICATIVE ZONE FOR CONSTRUCTION, OPERATION & MAINTENANCE
  - INDICATIVE NEW LATTICE PYLON
  - EXISTING LATTICE PYLON - NOT AFFECTED
  - INDICATIVE NEW OVERHEAD LINE (OHL)
  - EXISTING OVERHEAD LINE (OHL) - NOT AFFECTED
  - DRAFT ORDER LIMITS
  - INDICATIVE ACCESS ROUTE
  - INDICATIVE VISIBILITY SPY
  - INDICATIVE ENVIRONMENTAL PLANTING



**Notes**  
 This drawing is scaled at paper size A0, therefore any prints taken at smaller sizes will affect accuracy of the measurement units and should not be scaled against.

Coordinate System: British National Grid  
 Sheet X Centroid Coordinate: 421355 Sheet Y Centroid Coordinate: 462964

BACKGROUND MAPPING INFORMATION HAS BEEN REPRODUCED FROM THE ORDNANCE SURVEY BY PERMISSION OF ORDNANCE SURVEY OF THE CONTROLLER OF HIS MAJESTY'S STATIONERY OFFICE. CROWN COPYRIGHT ORDNANCE SURVEY ©. BLUESKY INTERNATIONAL LTD ©. NATIONAL GRID ELECTRICITY - 100024241.

Issue	Date	Remarks	Drawn	Checked	Approved
A	FEBRUARY 2025	FOR STATUTORY CONSULTATION	MTH	MG	TF

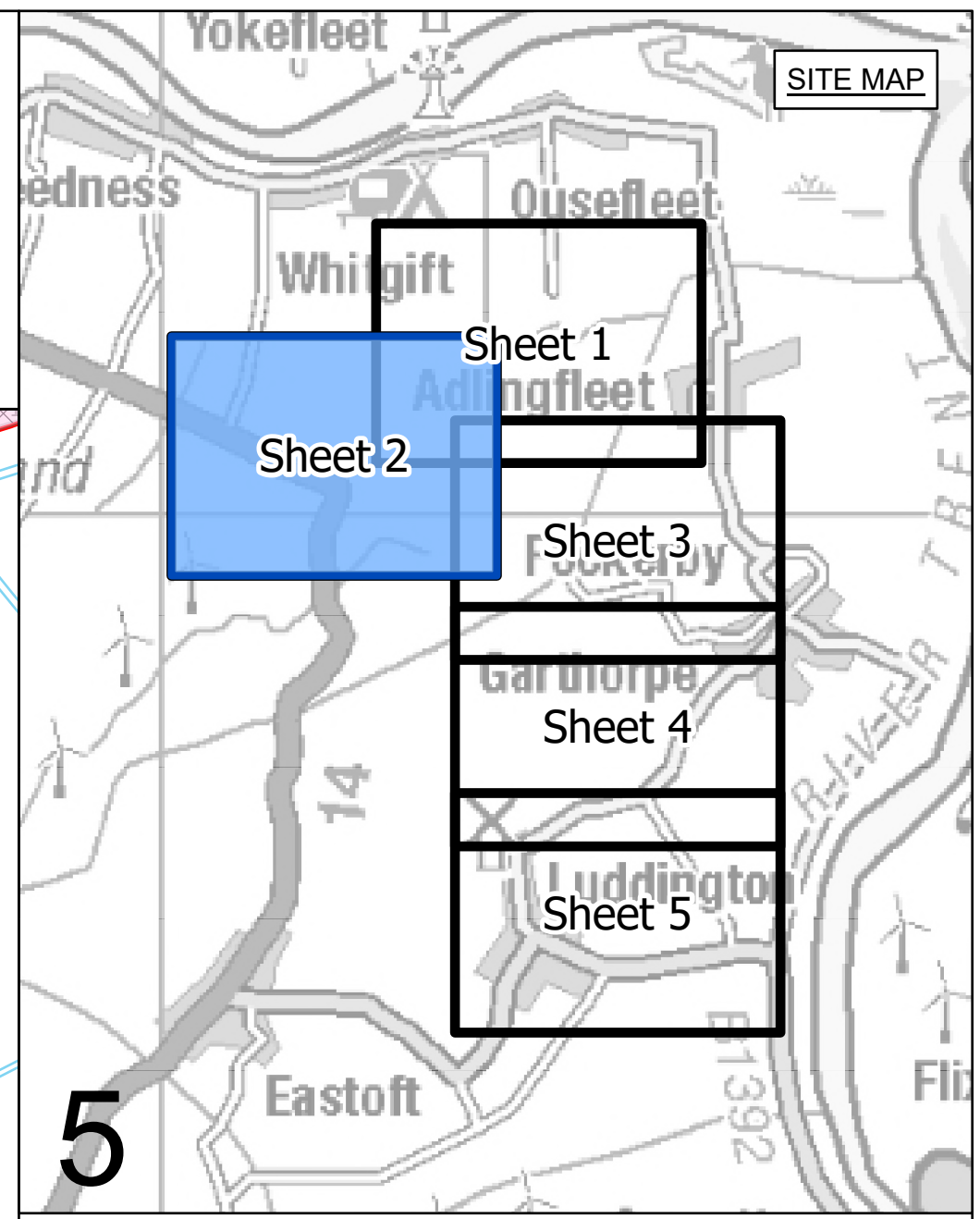
**Title**  
 NATIONAL GRID  
 NORTH HUMBER TO HIGH MARNHAM  
 S.42 CONSULTATION PLAN SERIES  
 ROUTE SECTION 5 (SHEET 1 OF 5)  
 EAST RIDING OF YORKSHIRE COUNCIL

**nationalgrid**  
 Application Number: EN020034  
 National Grid Drawing Reference: NHHM-NG-ENG-PLN-0012  
 Scale: 1:2,500 Sheet Size: A0 Sheet: SHEET 1 OF 5 Issue: A





NATIONAL GRID  
 NORTH HUMBER TO HIGH MARNHAM  
 S.42 CONSULTATION PLAN SERIES  
 ROUTE SECTION 5 (SHEET 2 OF 5)  
 EAST RIDING OF YORKSHIRE COUNCIL



5

- LEGEND**
- LOCAL AUTHORITY BOUNDARY
  - ROUTE SECTION BOUNDARY
  - SHEET INDEX CUTLINES
  - INDICATIVE ZONE FOR PERMANENT ASSETS
  - INDICATIVE ZONE FOR CONSTRUCTION, OPERATION & MAINTENANCE
  - ✚ INDICATIVE NEW LATTICE PYLON
  - ✚ EXISTING LATTICE PYLON - NOT AFFECTED
  - INDICATIVE NEW OVERHEAD LINE (OHL)
  - EXISTING OVERHEAD LINE (OHL) - NOT AFFECTED
  - ▭ DRAFT ORDER LIMITS
  - ▭ INDICATIVE ACCESS ROUTE
  - ▭ INDICATIVE VISIBILITY SPREAD
  - ▭ INDICATIVE ENVIRONMENTAL PLANTING

**Notes**  
 This drawing is scaled at paper size A0, therefore any prints taken at smaller sizes will affect accuracy of the measurement units and should not be scaled against.

Coordinate System: British National Grid  
 Sheet X Centroid Coordinate: 426468 Sheet Y Centroid Coordinate: 481353



BACKGROUND MAPPING INFORMATION HAS BEEN REPRODUCED FROM THE ORDNANCE SURVEY BY PERMISSION OF ORDNANCE SURVEY OF THE CONTROLLER OF HIS MAJESTY'S STATIONERY OFFICE. CROWN COPYRIGHT ORDNANCE SURVEY ©. BLUESKY INTERNATIONAL LTD ©. NATIONAL GRID ELECTRICITY - 100024241.

Issue	Date	Remarks	Drawn	Checked	Approved
A	FEBRUARY 2025	FOR STATUTORY CONSULTATION	MTH	MG	TF

Title

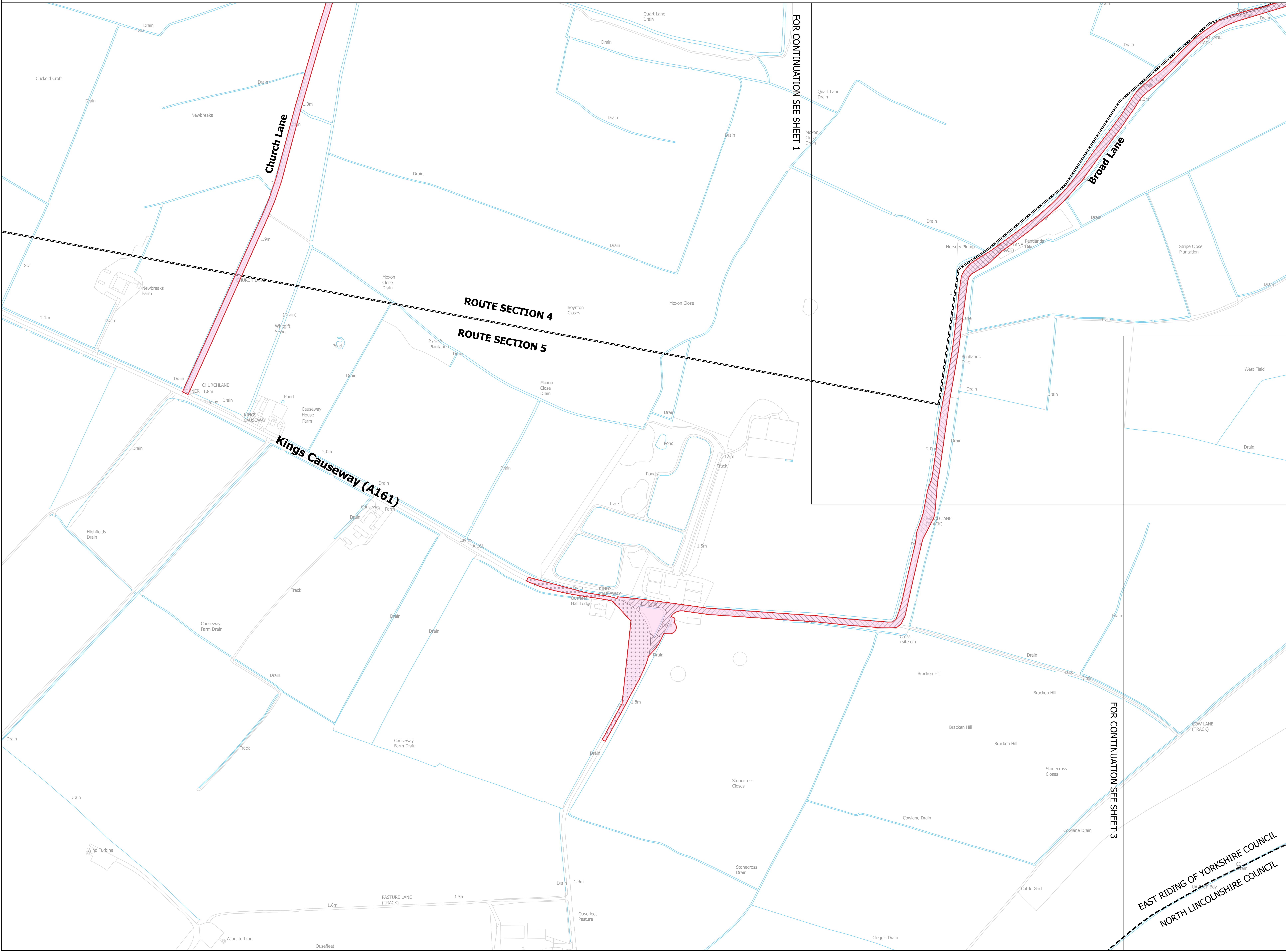
NATIONAL GRID  
 NORTH HUMBER TO HIGH MARNHAM  
 S.42 CONSULTATION PLAN SERIES  
 ROUTE SECTION 5 (SHEET 2 OF 5)  
 EAST RIDING OF YORKSHIRE COUNCIL



Application Number EN020034

National Grid Drawing Reference  
 NHHM-NG-ENG-PLN-0012

Scale	Sheet Size	Sheet	Issue
1:2,500	A0	SHEET 2 OF 5	A



FOR CONTINUATION SEE SHEET 1

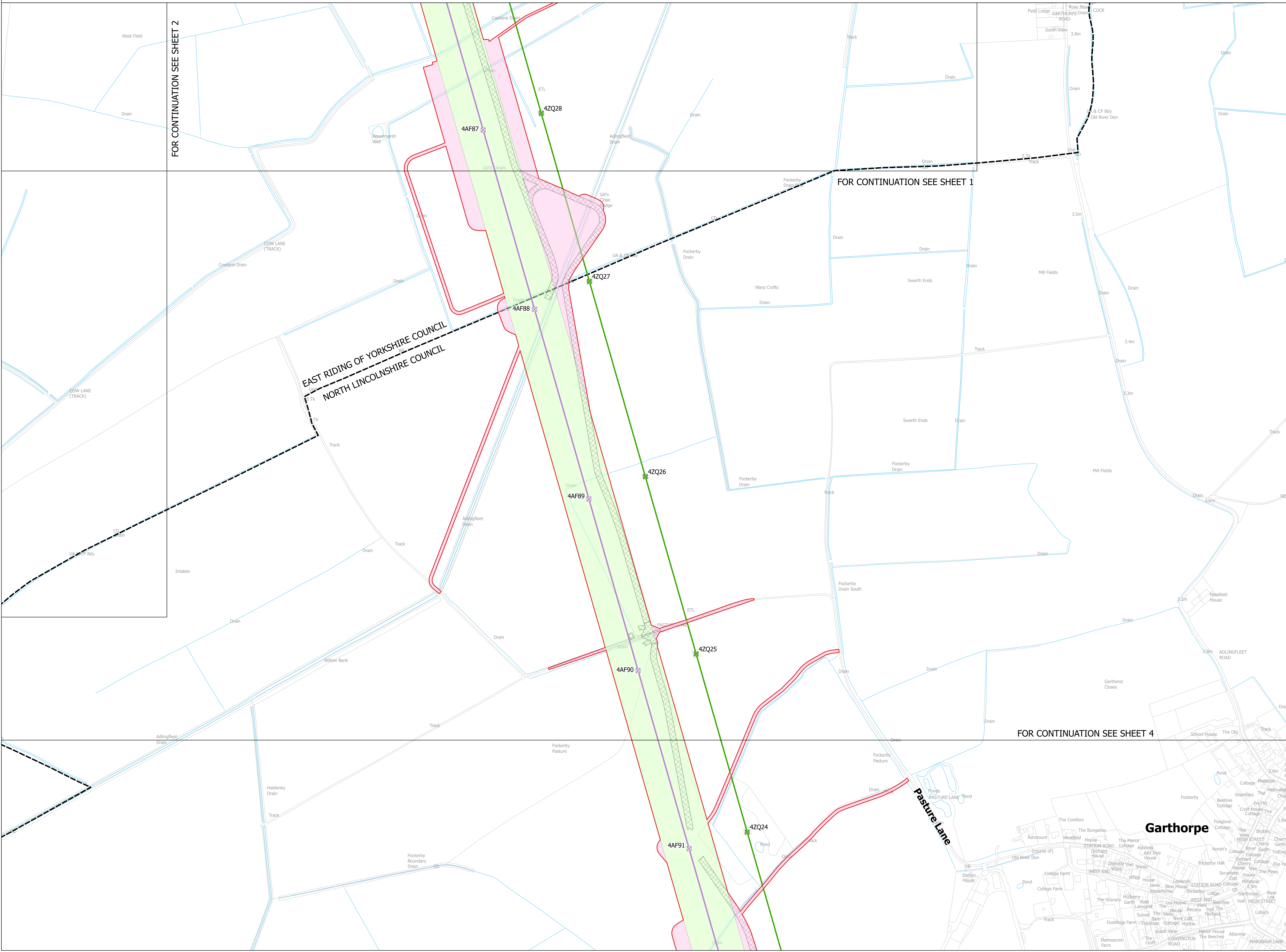
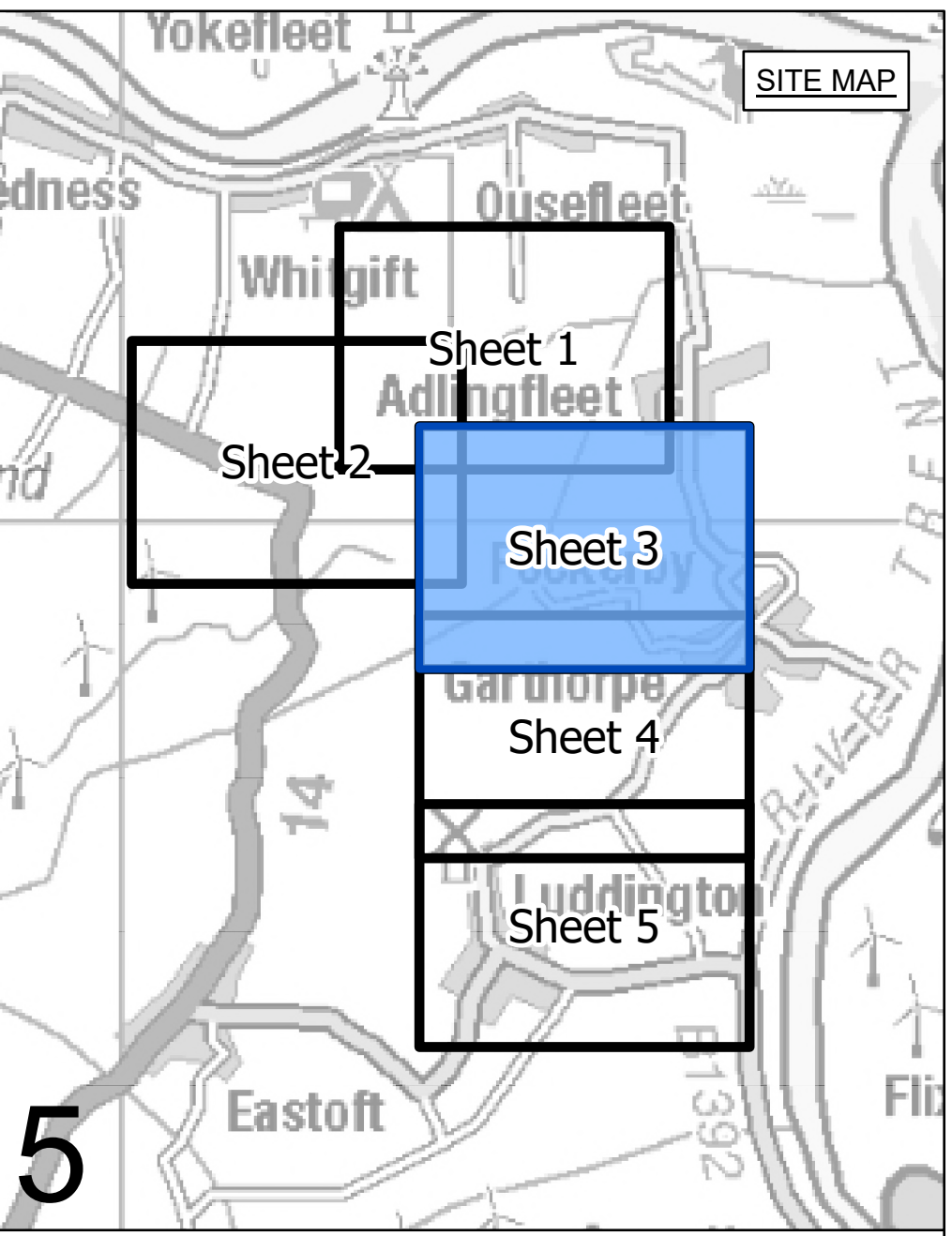
FOR CONTINUATION SEE SHEET 3

EAST RIDING OF YORKSHIRE COUNCIL  
 NORTH LINCOLNSHIRE COUNCIL





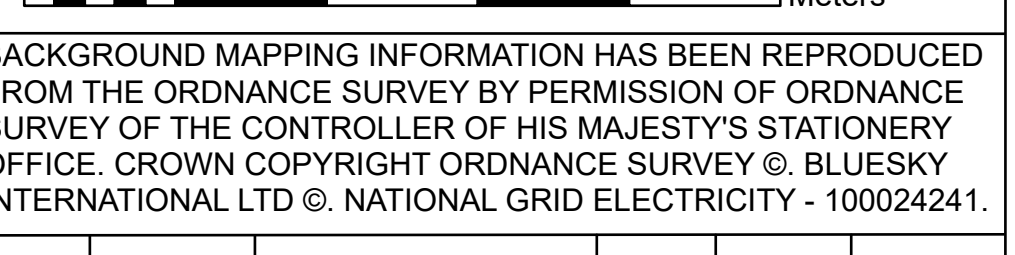
NATIONAL GRID  
 NORTH HUMBER TO HIGH MARNHAM  
 S.42 CONSULTATION PLAN SERIES  
 ROUTE SECTION 5 (SHEET 3 OF 5)  
 EAST RIDING OF YORKSHIRE COUNCIL AND NORTH LINCOLNSHIRE COUNCIL



- LEGEND**
- LOCAL AUTHORITY BOUNDARY
  - ROUTE SECTION BOUNDARY
  - SHEET INDEX CUTLINES
  - INDICATIVE ZONE FOR PERMANENT ASSETS
  - INDICATIVE ZONE FOR CONSTRUCTION, OPERATION & MAINTENANCE
  - INDICATIVE NEW LATTICE PYLON
  - EXISTING LATTICE PYLON - NOT AFFECTED
  - INDICATIVE NEW OVERHEAD LINE (OHL)
  - EXISTING OVERHEAD LINE (OHL) - NOT AFFECTED
  - DRAFT ORDER LIMITS
  - INDICATIVE ACCESS ROUTE
  - INDICATIVE VISIBILITY SPREAD
  - INDICATIVE ENVIRONMENTAL PLANTING

**Notes**  
 This drawing is scaled at paper size A0, therefore any prints taken at smaller sizes will affect accuracy of the measurement units and should not be scaled against.

Coordinate System: British National Grid  
 Sheet X Centroid Coordinate: 419805 Sheet Y Centroid Coordinate: 483585



BACKGROUND MAPPING INFORMATION HAS BEEN REPRODUCED FROM THE ORDNANCE SURVEY BY PERMISSION OF ORDNANCE SURVEY OF THE CONTROLLER OF HIS MAJESTY'S STATIONERY OFFICE. CROWN COPYRIGHT ORDNANCE SURVEY ©. BLUESKY INTERNATIONAL LTD ©. NATIONAL GRID ELECTRICITY - 100024241.

Issue	Date	Remarks	Drawn	Checked	Approved
A	FEBRUARY 2025	FOR STATUTORY CONSULTATION	MTH	MG	TF

**Title**  
 NATIONAL GRID  
 NORTH HUMBER TO HIGH MARNHAM  
 S.42 CONSULTATION PLAN SERIES  
 ROUTE SECTION 5 (SHEET 3 OF 5)  
 EAST RIDING OF YORKSHIRE COUNCIL  
 AND NORTH LINCOLNSHIRE COUNCIL

**nationalgrid**

Application Number: EN020034

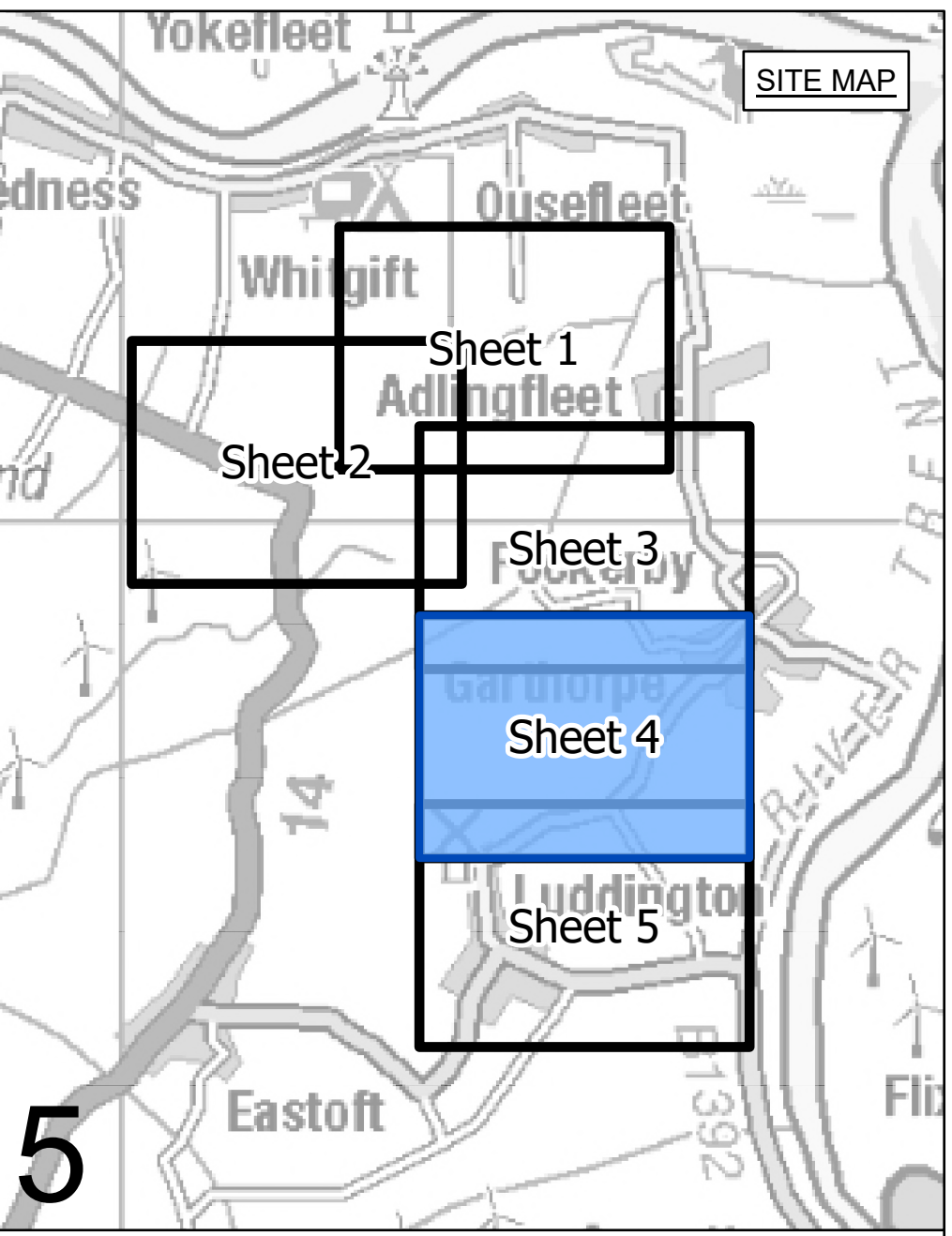
National Grid Drawing Reference: NHHM-NG-ENG-PLN-0012

Scale	Sheet Size	Sheet	Issue
1:2,500	A0	SHEET 3 OF 5	A

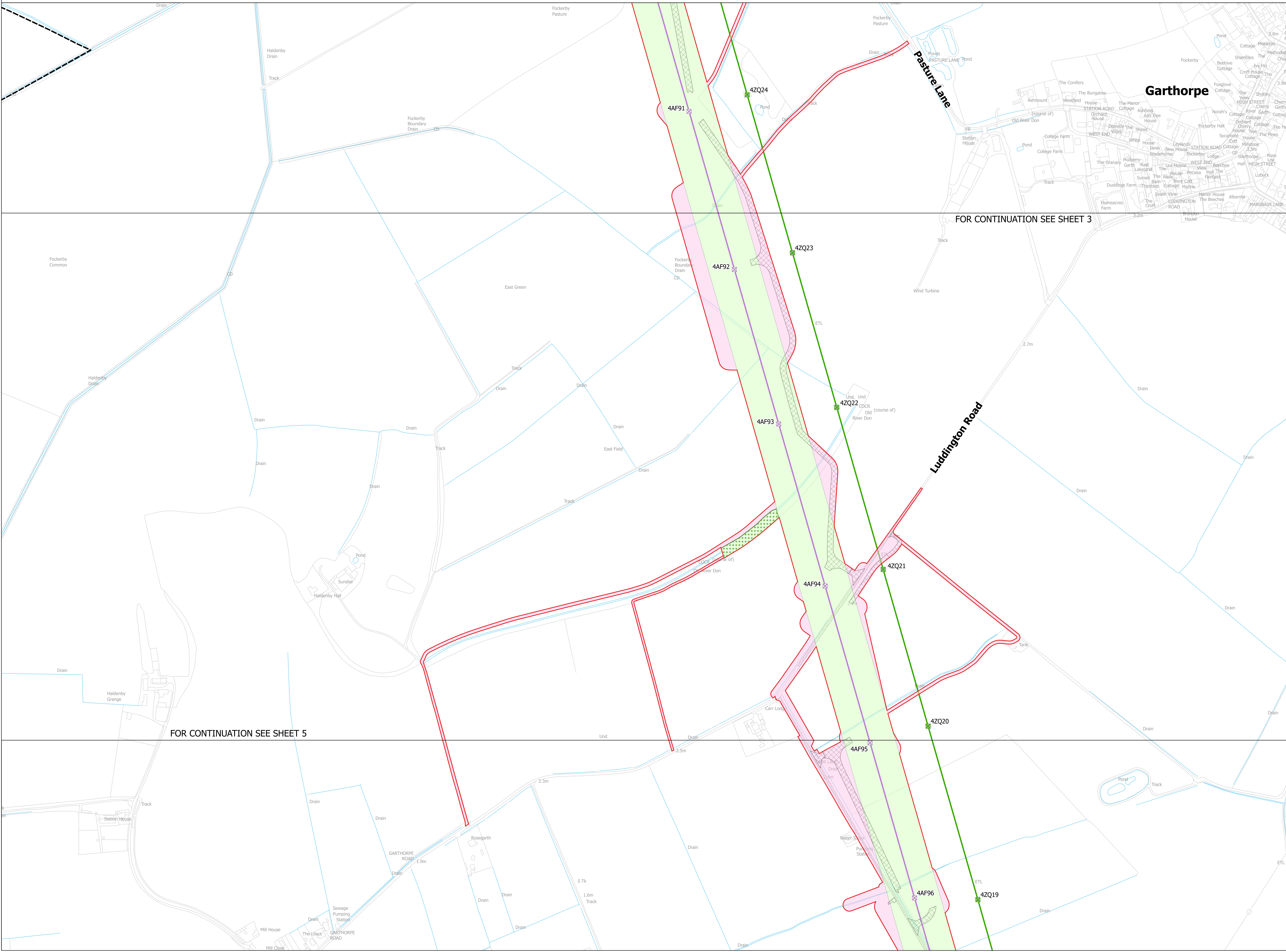




NATIONAL GRID  
 NORTH HUMBER TO HIGH MARNHAM  
 S.42 CONSULTATION PLAN SERIES  
 ROUTE SECTION 5 (SHEET 4 OF 5)  
 NORTH LINCOLNSHIRE COUNCIL



- LEGEND**
- LOCAL AUTHORITY BOUNDARY
  - ROUTE SECTION BOUNDARY
  - SHEET INDEX CUTLINES
  - INDICATIVE ZONE FOR PERMANENT ASSETS
  - INDICATIVE ZONE FOR CONSTRUCTION, OPERATION & MAINTENANCE
  - INDICATIVE NEW LATTICE PYLON
  - EXISTING LATTICE PYLON - NOT AFFECTED
  - INDICATIVE NEW OVERHEAD LINE (OHL)
  - EXISTING OVERHEAD LINE (OHL) - NOT AFFECTED
  - DRAFT ORDER LIMITS
  - INDICATIVE ACCESS ROUTE
  - INDICATIVE VISIBILITY SPREAD
  - INDICATIVE ENVIRONMENTAL PLANTING



FOR CONTINUATION SEE SHEET 3

FOR CONTINUATION SEE SHEET 5

**Notes**  
 This drawing is scaled at paper size A0, therefore any prints taken at smaller sizes will affect accuracy of the measurement units and should not be scaled against.

Coordinate System: British National Grid  
 Sheet X Centroid Coordinate: 418340 Sheet Y Centroid Coordinate: 483585

0 50 100 150 200 250 Meters

BACKGROUND MAPPING INFORMATION HAS BEEN REPRODUCED FROM THE ORDNANCE SURVEY BY PERMISSION OF ORDNANCE SURVEY OF THE CONTROLLER OF HIS MAJESTY'S STATIONERY OFFICE. CROWN COPYRIGHT ORDNANCE SURVEY ©. BLUESKY INTERNATIONAL LTD ©. NATIONAL GRID ELECTRICITY - 100024241.

A	FEBRUARY 2025	FOR STATUTORY CONSULTATION	MTH	MG	TF

Issue	Date	Remarks	Drawn	Checked	Approved

**Title**

NATIONAL GRID  
 NORTH HUMBER TO HIGH MARNHAM  
 S.42 CONSULTATION PLAN SERIES  
 ROUTE SECTION 5 (SHEET 4 OF 5)  
 NORTH LINCOLNSHIRE COUNCIL

**nationalgrid**

Application Number: EN020034

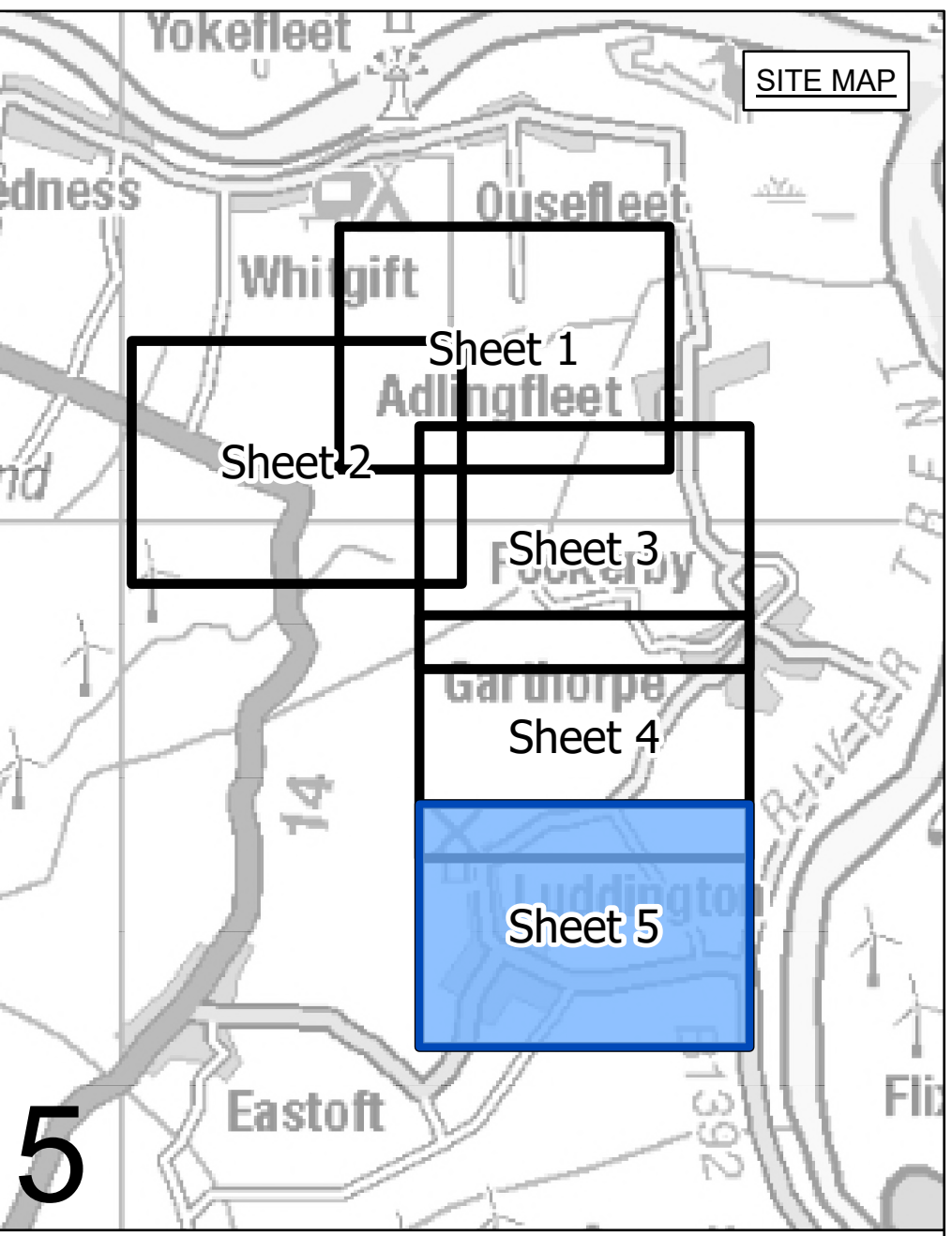
National Grid Drawing Reference: NHHM-NG-ENG-PLN-0012

Scale: 1:2,500	Sheet Size: A0	Sheet: SHEET 4 OF 5	Issue: A
----------------	----------------	---------------------	----------





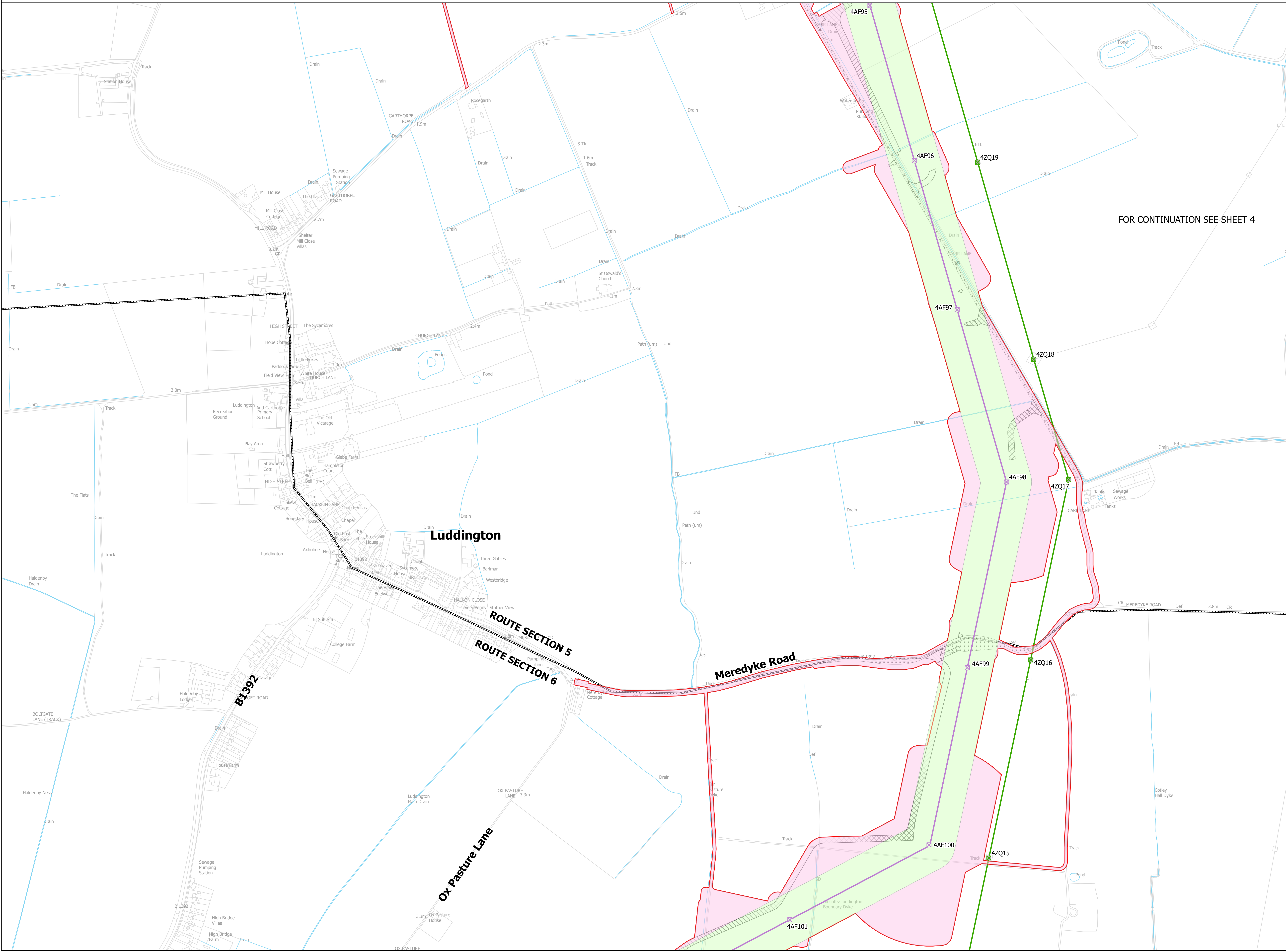
NATIONAL GRID  
 NORTH HUMBER TO HIGH MARNHAM  
 S.42 CONSULTATION PLAN SERIES  
 ROUTE SECTION 5 (SHEET 5 OF 5)  
 NORTH LINCOLNSHIRE COUNCIL



5

- LEGEND**
- LOCAL AUTHORITY BOUNDARY
  - ROUTE SECTION BOUNDARY
  - SHEET INDEX OUTLINES
  - INDICATIVE ZONE FOR PERMANENT ASSETS
  - INDICATIVE ZONE FOR CONSTRUCTION, OPERATION & MAINTENANCE
  - INDICATIVE NEW LATTICE PYLON
  - EXISTING LATTICE PYLON - NOT AFFECTED
  - INDICATIVE NEW OVERHEAD LINE (OHL)
  - EXISTING OVERHEAD LINE (OHL) - NOT AFFECTED
  - DRAFT ORDER LIMITS
  - INDICATIVE ACCESS ROUTE
  - INDICATIVE VISIBILITY SPREAD
  - INDICATIVE ENVIRONMENTAL PLANTING

FOR CONTINUATION SEE SHEET 4



**Notes**  
 This drawing is scaled at paper size A0, therefore any prints taken at smaller sizes will affect accuracy of the measurement units and should not be scaled against.

Coordinate System: British National Grid  
 Sheet X Centroid Coordinate: 416874 Sheet Y Centroid Coordinate: 463585

0 50 100 150 200 250  
 Meters

BACKGROUND MAPPING INFORMATION HAS BEEN REPRODUCED FROM THE ORDNANCE SURVEY BY PERMISSION OF ORDNANCE SURVEY OF THE CONTROLLER OF HIS MAJESTY'S STATIONERY OFFICE. CROWN COPYRIGHT ORDNANCE SURVEY © BLUESKY INTERNATIONAL LTD © NATIONAL GRID ELECTRICITY - 100024241.

Issue	Date	Remarks	Drawn	Checked	Approved
A	FEBRUARY 2025	FOR STATUTORY CONSULTATION	MTH	MG	TF

**Title**

NATIONAL GRID  
 NORTH HUMBER TO HIGH MARNHAM  
 S.42 CONSULTATION PLAN SERIES  
 ROUTE SECTION 5 (SHEET 5 OF 5)  
 NORTH LINCOLNSHIRE COUNCIL

**nationalgrid**

Application Number: EN020034

National Grid Drawing Reference: NHHM-NG-ENG-PLN-0012

Scale: 1:2,500	Sheet Size: A0	Sheet: SHEET 5 OF 5	Issue: A
----------------	----------------	---------------------	----------