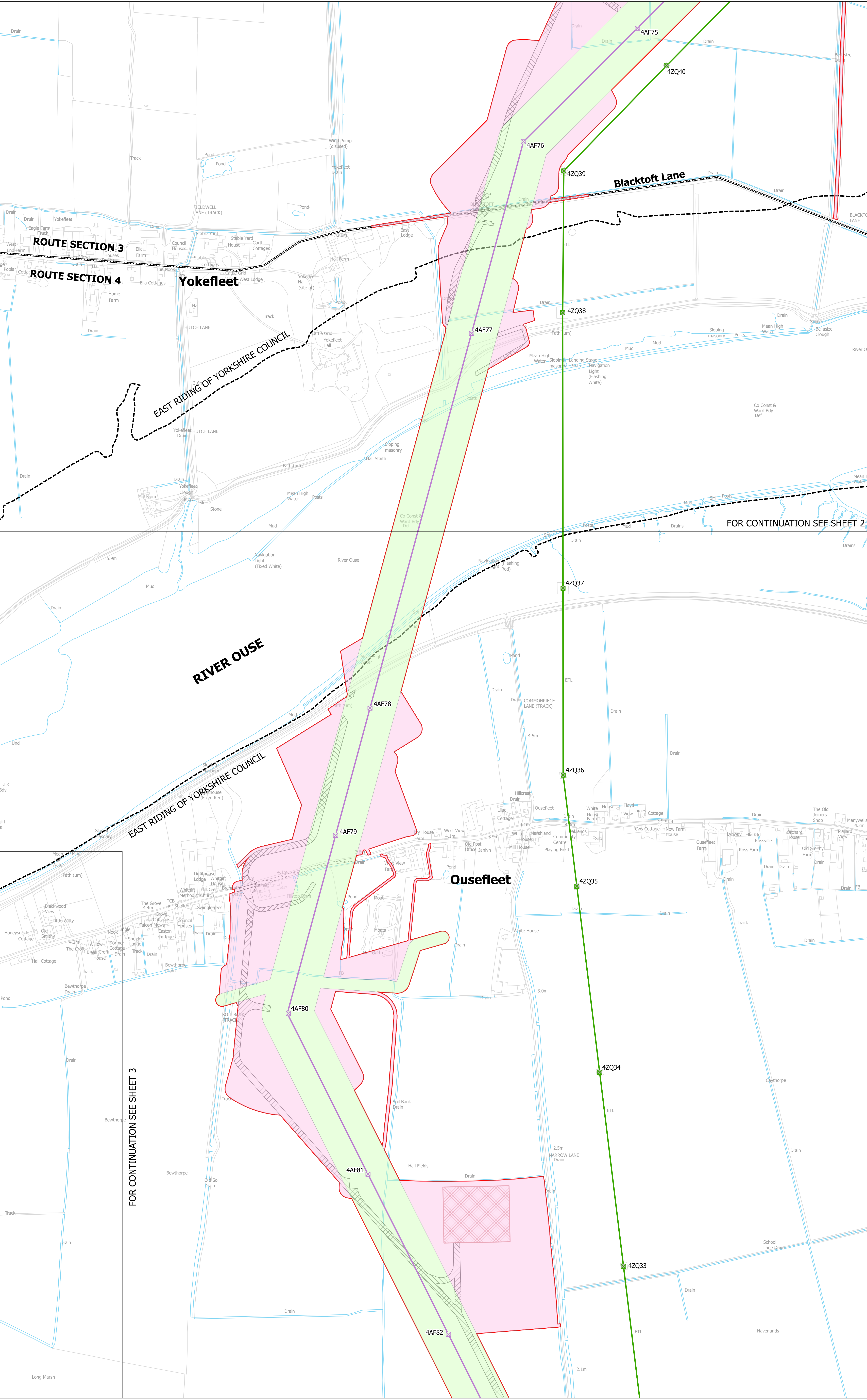
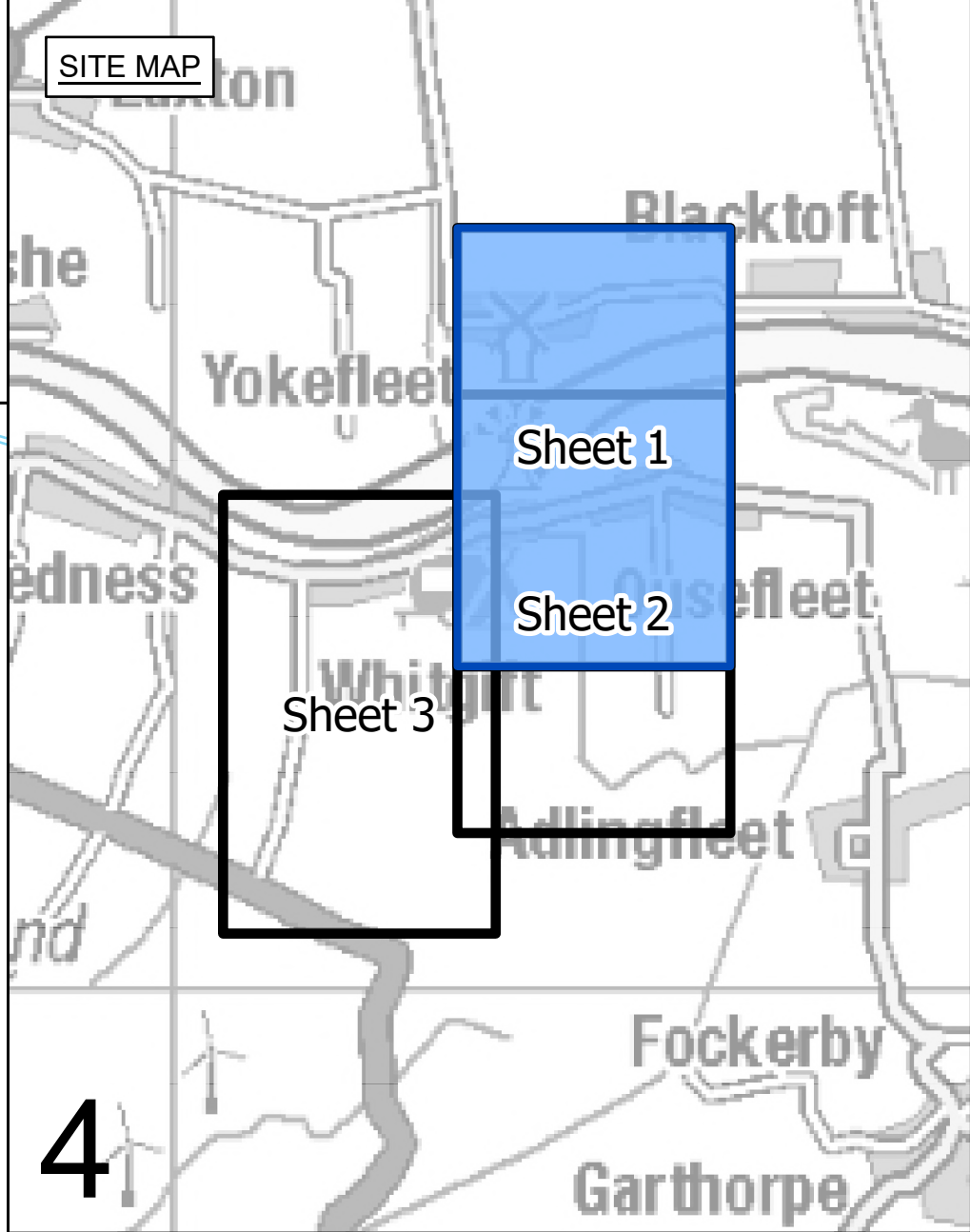


NATIONAL GRID  
 NORTH HUMBER TO HIGH MARNHAM  
 S.42 CONSULTATION PLAN SERIES  
 ROUTE SECTION 4 (SHEET 1 OF 3)  
 EAST RIDING OF YORKSHIRE COUNCIL



- LEGEND**
- ▬ LOCAL AUTHORITY BOUNDARY
  - ▬ ROUTE SECTION BOUNDARY
  - ▬ SHEET INDEX CUTLINES
  - ▬ INDICATIVE ZONE FOR PERMANENT ASSETS
  - ▬ INDICATIVE ZONE FOR CONSTRUCTION, OPERATION & MAINTENANCE
  - ⊗ INDICATIVE NEW LATTICE PYLON
  - ⊗ EXISTING LATTICE PYLON - NOT AFFECTED
  - ▬ INDICATIVE NEW OVERHEAD LINE (OHL)
  - ▬ EXISTING OVERHEAD LINE (OHL) - NOT AFFECTED
  - ▬ DRAFT ORDER LIMITS
  - ▬ INDICATIVE ACCESS ROUTE
  - ▬ INDICATIVE VISIBILITY SPLAY
  - ▬ INDICATIVE CONSTRUCTION COMPOUND

FOR CONTINUATION SEE SHEET 2

FOR CONTINUATION SEE SHEET 3

**Notes**  
 This drawing is scaled at paper size A0, therefore any prints taken at smaller sizes will affect accuracy of the measurement units and should not be scaled against.

Coordinate System: British National Grid  
 Sheet X Centroid Coordinate: 423387 Sheet Y Centroid Coordinate: 482623

BACKGROUND MAPPING INFORMATION HAS BEEN REPRODUCED FROM THE ORDNANCE SURVEY BY PERMISSION OF ORDNANCE SURVEY OF THE CONTROLLER OF HIS MAJESTY'S STATIONERY OFFICE. CROWN COPYRIGHT ORDNANCE SURVEY © BLUESKY INTERNATIONAL LTD © NATIONAL GRID ELECTRICITY - 100024241.

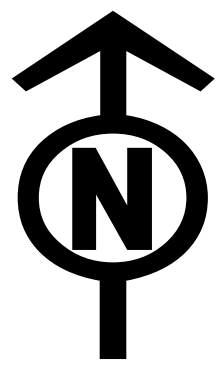
A	Issue	Date	Remarks	MTH	MG	TF

**nationalgrid**

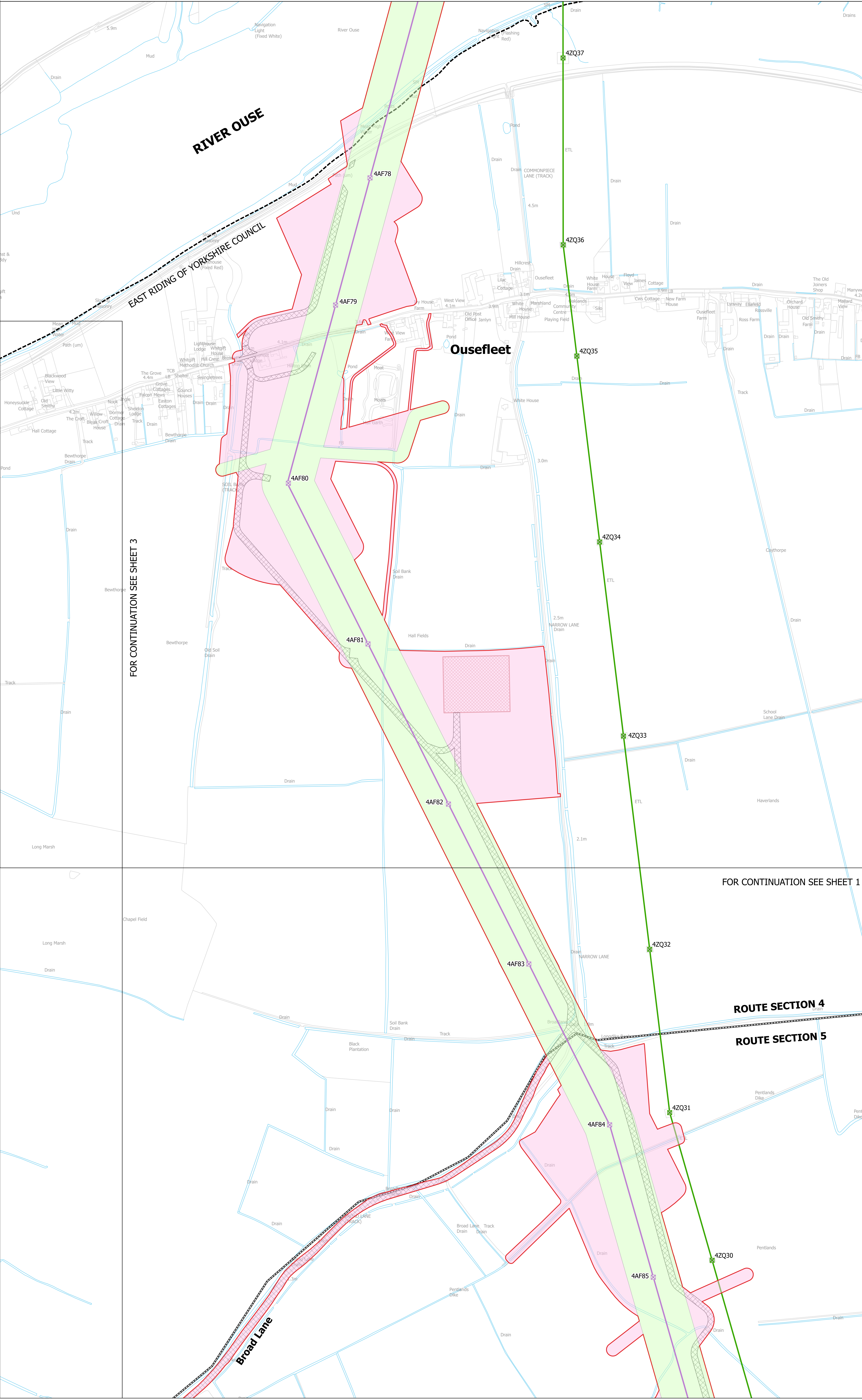
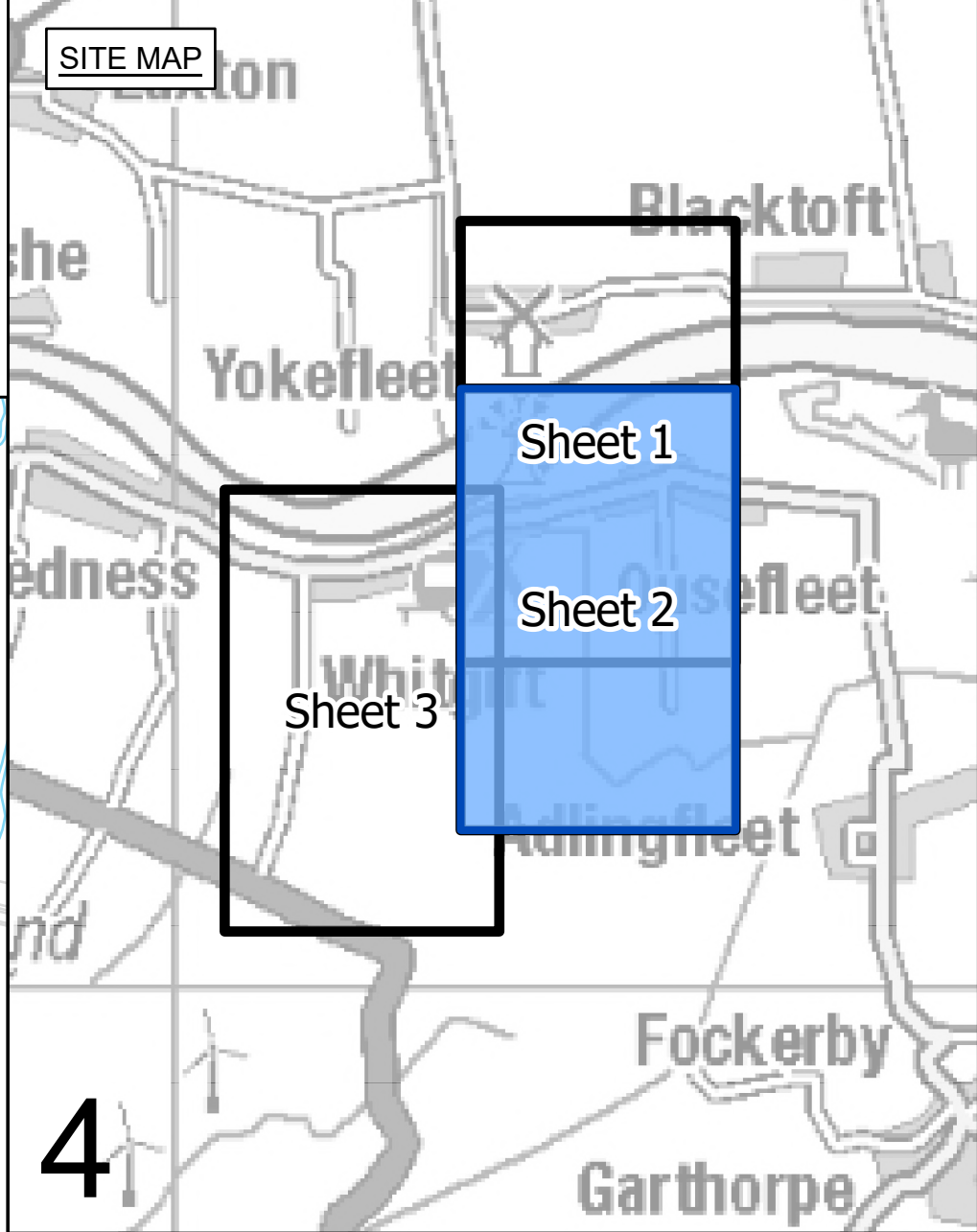
Application Number: EN020034

National Grid Drawing Reference: NHHM-NG-ENG-PLN-0010

Scale	Sheet Size	Sheet	Issue
1:2,500	A0	SHEET 1 OF 3	A



NATIONAL GRID  
 NORTH HUMBER TO HIGH MARNHAM  
 S.42 CONSULTATION PLAN SERIES  
 ROUTE SECTION 4 (SHEET 2 OF 3)  
 EAST RIDING OF YORKSHIRE COUNCIL



- LEGEND**
- ▬ LOCAL AUTHORITY BOUNDARY
  - ▬ ROUTE SECTION BOUNDARY
  - ▬ SHEET INDEX CUTLINES
  - ▬ INDICATIVE ZONE FOR PERMANENT ASSETS
  - ▬ INDICATIVE ZONE FOR CONSTRUCTION, OPERATION & MAINTENANCE
  - ⊗ INDICATIVE NEW LATTICE PYLON
  - ⊗ EXISTING LATTICE PYLON - NOT AFFECTED
  - ▬ INDICATIVE NEW OVERHEAD LINE (OHL)
  - ▬ EXISTING OVERHEAD LINE (OHL) - NOT AFFECTED
  - ▬ DRAFT ORDER LIMITS
  - ▬ INDICATIVE ACCESS ROUTE
  - ▬ INDICATIVE VISIBILITY SPLAY
  - ▬ INDICATIVE CONSTRUCTION COMPOUND

FOR CONTINUATION SEE SHEET 3

FOR CONTINUATION SEE SHEET 1

**ROUTE SECTION 4**  
**ROUTE SECTION 5**

**Notes**  
 This drawing is scaled at paper size A0, therefore any prints taken at smaller sizes will affect accuracy of the measurement units and should not be scaled against.

Coordinate System: British National Grid  
 Sheet X Centroid Coordinate: 422355 Sheet Y Centroid Coordinate: 482623

0 50 100 150 200 250  
 Meters

BACKGROUND MAPPING INFORMATION HAS BEEN REPRODUCED FROM THE ORDNANCE SURVEY BY PERMISSION OF ORDNANCE SURVEY OF THE CONTROLLER OF HIS MAJESTY'S STATIONERY OFFICE. CROWN COPYRIGHT ORDNANCE SURVEY © BLUESKY INTERNATIONAL LTD © NATIONAL GRID ELECTRICITY - 100024241.

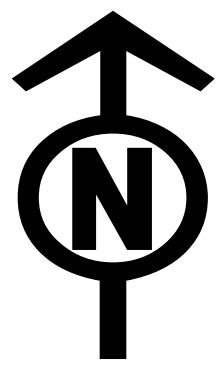
A	Issue	Date	Remarks	MTH	MG	TF

**Title**  
 NATIONAL GRID  
 NORTH HUMBER TO HIGH MARNHAM  
 S.42 CONSULTATION PLAN SERIES  
 ROUTE SECTION 4 (SHEET 2 OF 3)  
 EAST RIDING OF YORKSHIRE COUNCIL

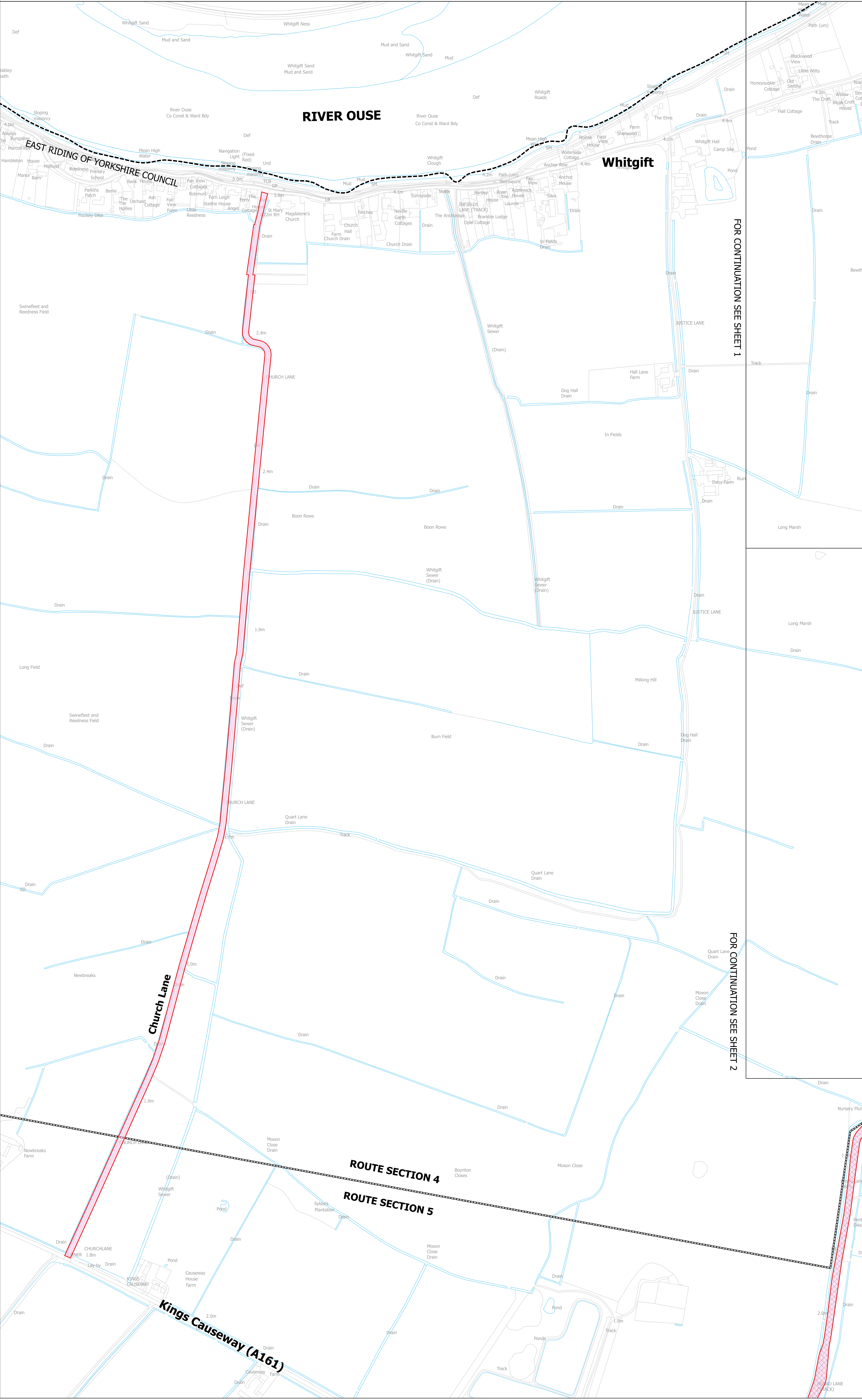
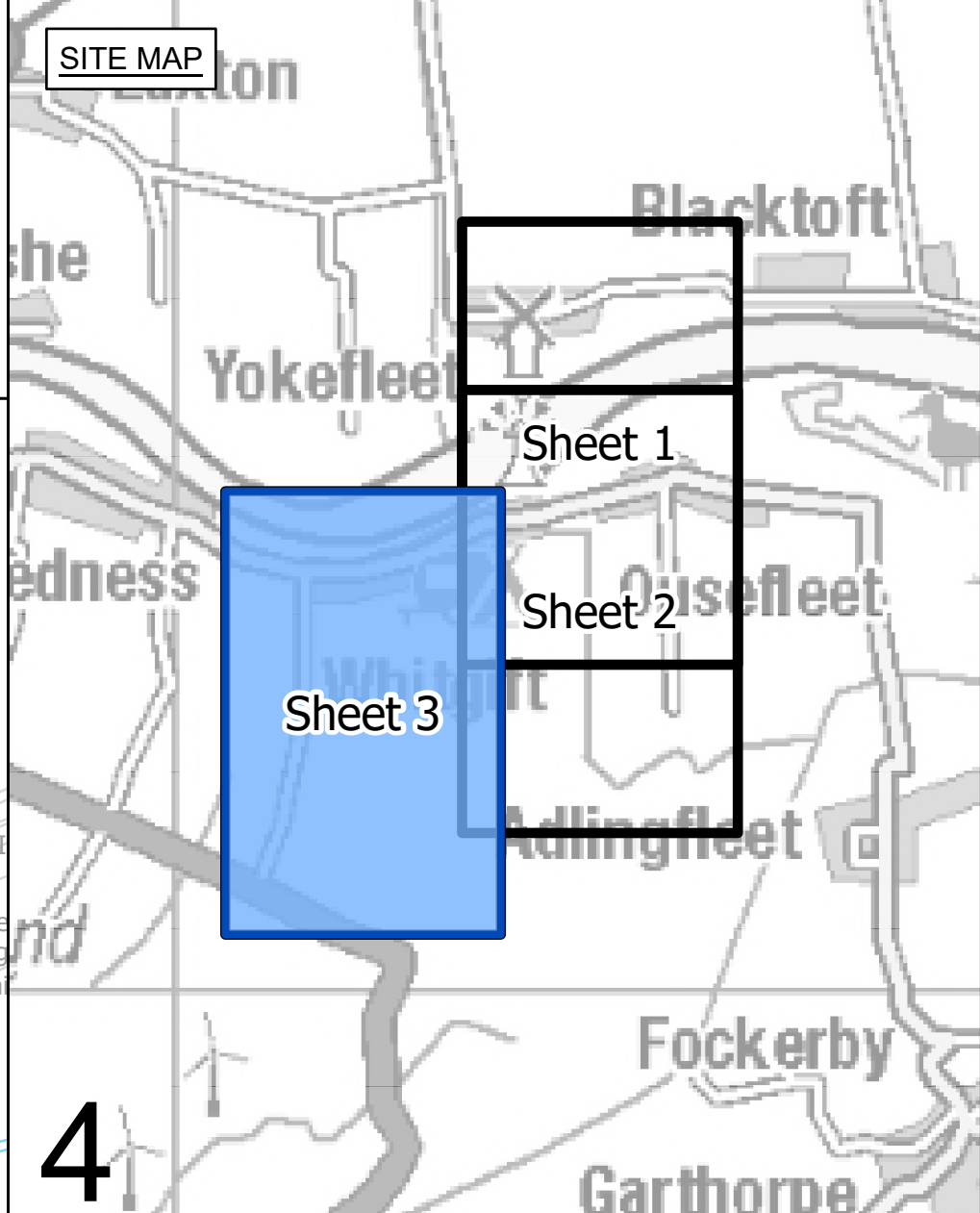
**nationalgrid**  
 Application Number: EN020034

National Grid Drawing Reference: NHHM-NG-ENG-PLN-0010

Scale	Sheet Size	Sheet	Issue
1:2,500	A0	SHEET 2 OF 3	A



NATIONAL GRID  
 NORTH HUMBER TO HIGH MARNHAM  
 S.42 CONSULTATION PLAN SERIES  
 ROUTE SECTION 4 (SHEET 3 OF 3)  
 EAST RIDING OF YORKSHIRE COUNCIL



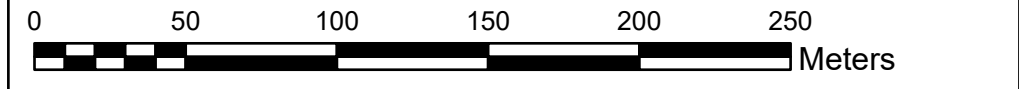
- LEGEND**
- ▬ LOCAL AUTHORITY BOUNDARY
  - ▬ ROUTE SECTION BOUNDARY
  - ▬ SHEET INDEX CUTLINES
  - ▬ INDICATIVE ZONE FOR PERMANENT ASSETS
  - ▬ INDICATIVE ZONE FOR CONSTRUCTION, OPERATION & MAINTENANCE
  - ✕ INDICATIVE NEW LATTICE PYLON
  - ✕ EXISTING LATTICE PYLON - NOT AFFECTED
  - ▬ INDICATIVE NEW OVERHEAD LINE (OHL)
  - ▬ EXISTING OVERHEAD LINE (OHL) - NOT AFFECTED
  - ▬ DRAFT ORDER LIMITS
  - ▬ INDICATIVE ACCESS ROUTE
  - ▬ INDICATIVE VISIBILITY SPLAY
  - ▬ INDICATIVE CONSTRUCTION COMPOUND

FOR CONTINUATION SEE SHEET 1

FOR CONTINUATION SEE SHEET 2

**Notes**  
 This drawing is scaled at paper size A0, therefore any prints taken at smaller sizes will affect accuracy of the measurement units and should not be scaled against.

Coordinate System: British National Grid  
 Sheet X Centroid Coordinate: 421728 Sheet Y Centroid Coordinate: 481158



BACKGROUND MAPPING INFORMATION HAS BEEN REPRODUCED FROM THE ORDNANCE SURVEY BY PERMISSION OF ORDNANCE SURVEY OF THE CONTROLLER OF HIS MAJESTY'S STATIONERY OFFICE. CROWN COPYRIGHT ORDNANCE SURVEY © BLUESKY INTERNATIONAL LTD © NATIONAL GRID ELECTRICITY - 100024241.

Issue	Date	Remarks	Drawn	Checked	Approved
A	FEBRUARY 2025	FOR STATUTORY CONSULTATION	MTH	MG	TF

**Title**  
 NATIONAL GRID  
 NORTH HUMBER TO HIGH MARNHAM  
 S.42 CONSULTATION PLAN SERIES  
 ROUTE SECTION 4 (SHEET 3 OF 3)  
 EAST RIDING OF YORKSHIRE COUNCIL

**nationalgrid**  
 Application Number: EN020034

National Grid Drawing Reference: NHHM-NG-ENG-PLN-0010

Scale	Sheet Size	Sheet	Issue
1:2,500	A0	SHEET 3 OF 3	A