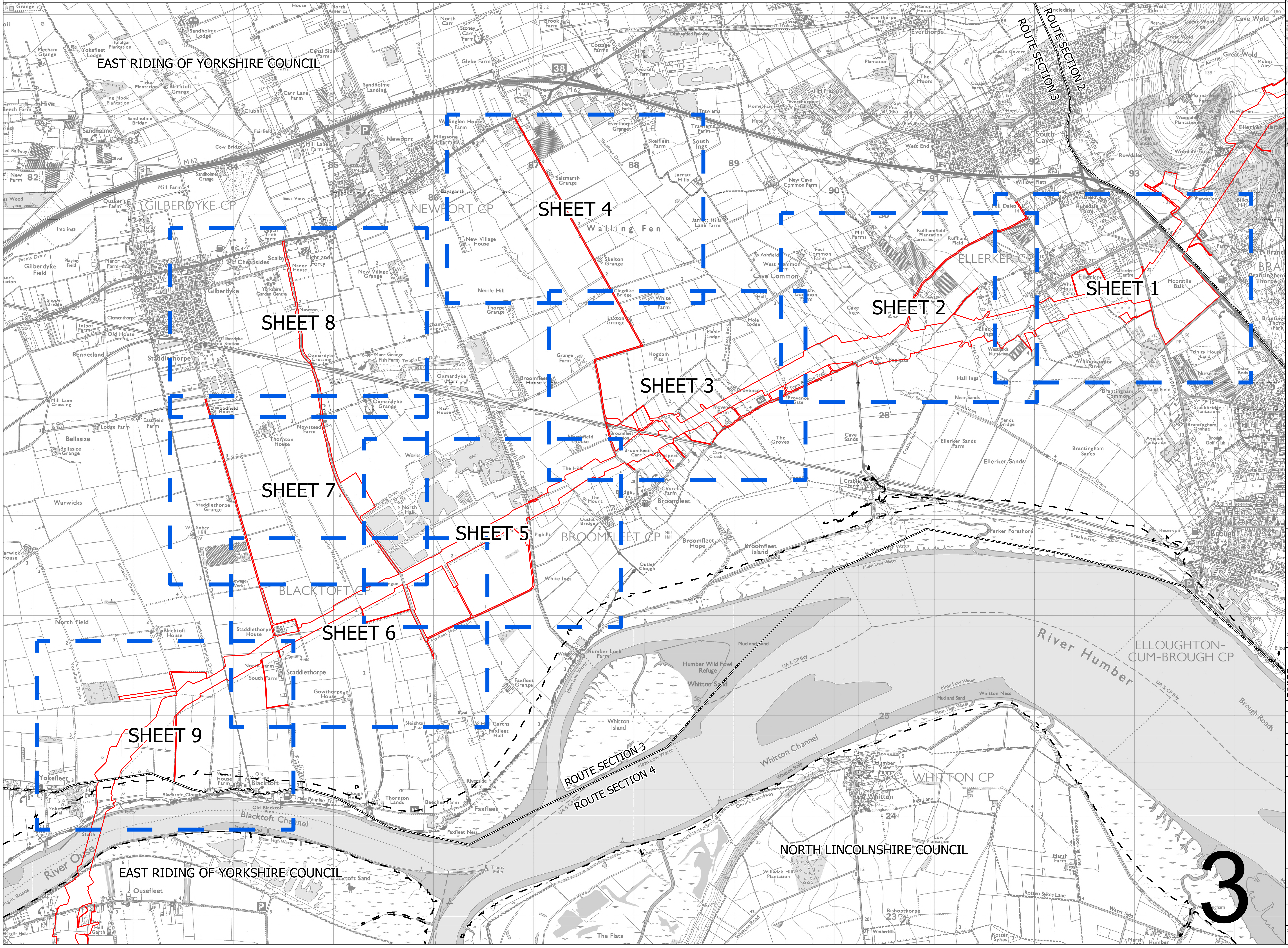
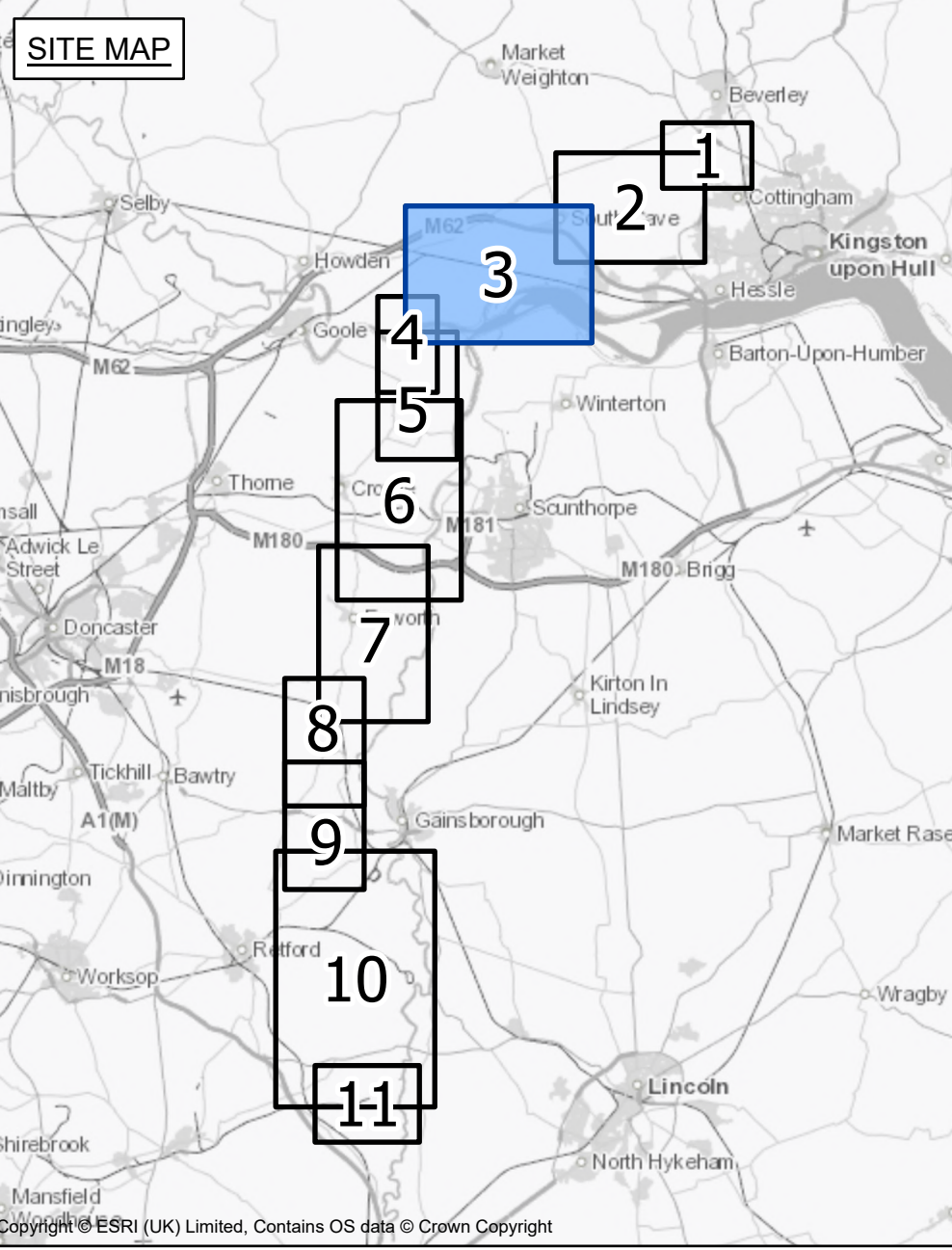


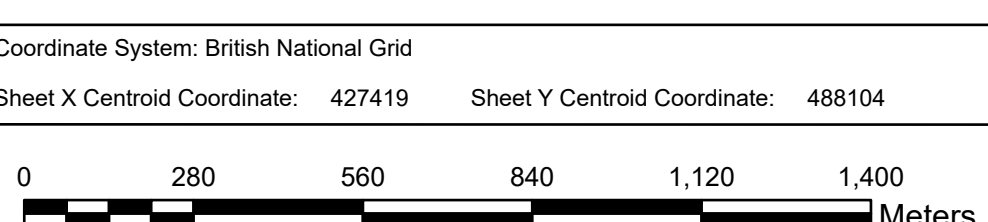


NATIONAL GRID
 NORTH HUMBER TO HIGH MARNHAM
 S.42 CONSULTATION KEY PLAN
 ROUTE SECTION 3 (SHEET 1 OF 1)
 EAST RIDING OF YORKSHIRE COUNCIL



- LEGEND**
- LOCAL AUTHORITY BOUNDARY
 - - - ROUTE SECTION BOUNDARY
 - SHEET INDEX
 - DRAFT ORDER LIMITS

Notes
 This drawing is scaled at paper size A0, therefore any prints taken at smaller sizes will affect accuracy of the measurement units and should not be scaled against.



Coordinate System: British National Grid
 Sheet X Centroid Coordinate: 427419 Sheet Y Centroid Coordinate: 488104
 BACKGROUND MAPPING INFORMATION HAS BEEN REPRODUCED FROM THE ORDNANCE SURVEY BY PERMISSION OF ORDNANCE SURVEY OF THE CONTROLLER OF HIS MAJESTY'S STATIONERY OFFICE. CROWN COPYRIGHT ORDNANCE SURVEY ©. BLUESKY INTERNATIONAL LTD ©. NATIONAL GRID ELECTRICITY - 100024241.

Issue	Date	Remarks	Drawn	Checked	Approved
A	FEBRUARY 2025	FOR STATUTORY CONSULTATION	MTH	MG	TF
Title					

NATIONAL GRID
 NORTH HUMBER TO HIGH MARNHAM
 S.42 CONSULTATION KEY PLAN
 ROUTE SECTION 3 (SHEET 1 OF 1)
 EAST RIDING OF YORKSHIRE COUNCIL

nationalgrid			
Application Number	EN020034		
National Grid Drawing Reference			
NHHM-NG-ENG-PLN-0007			
Scale	Sheet Size	Sheet	Issue
1:12,500	A0	SHEET 1 OF 1	A