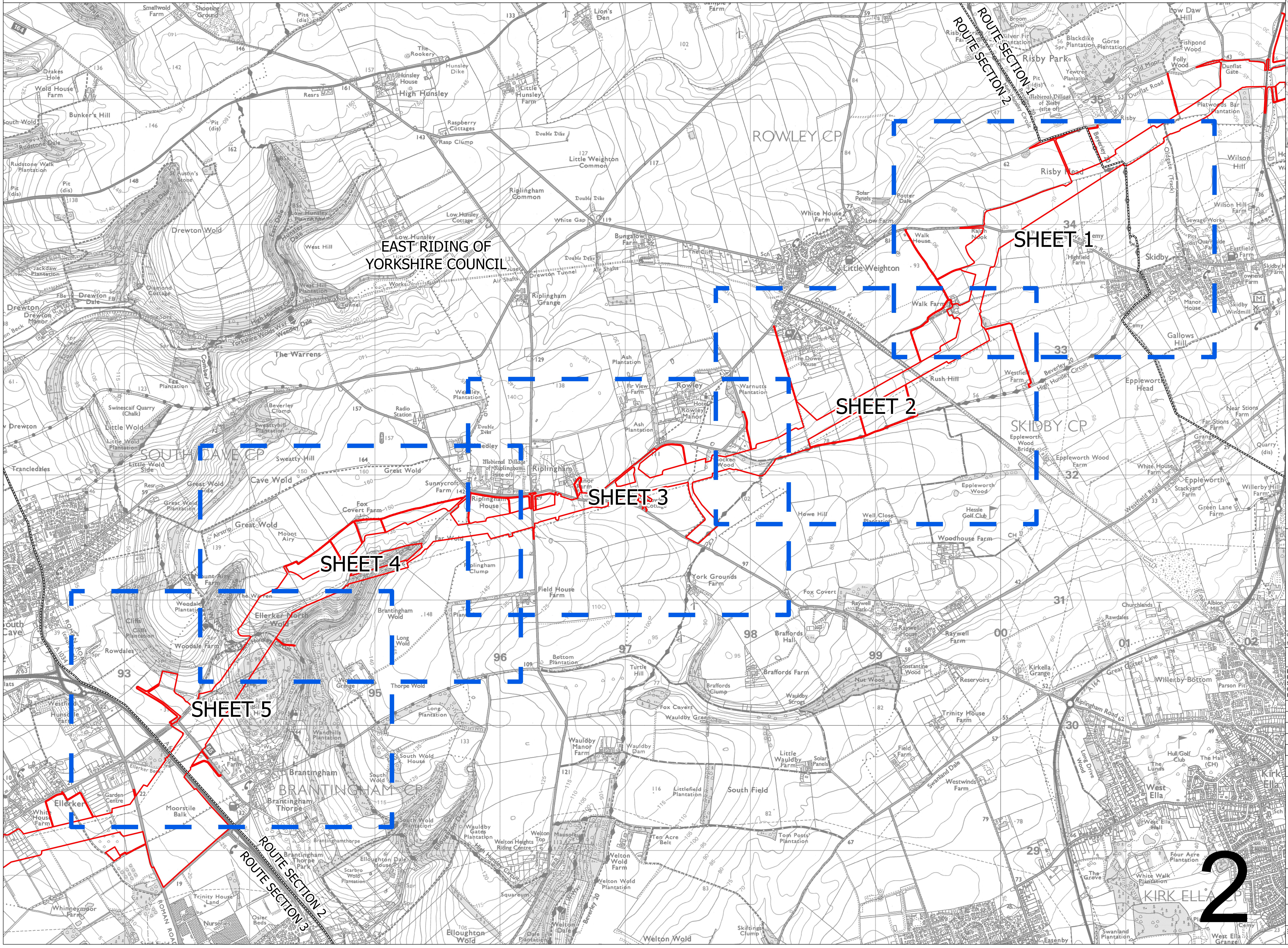
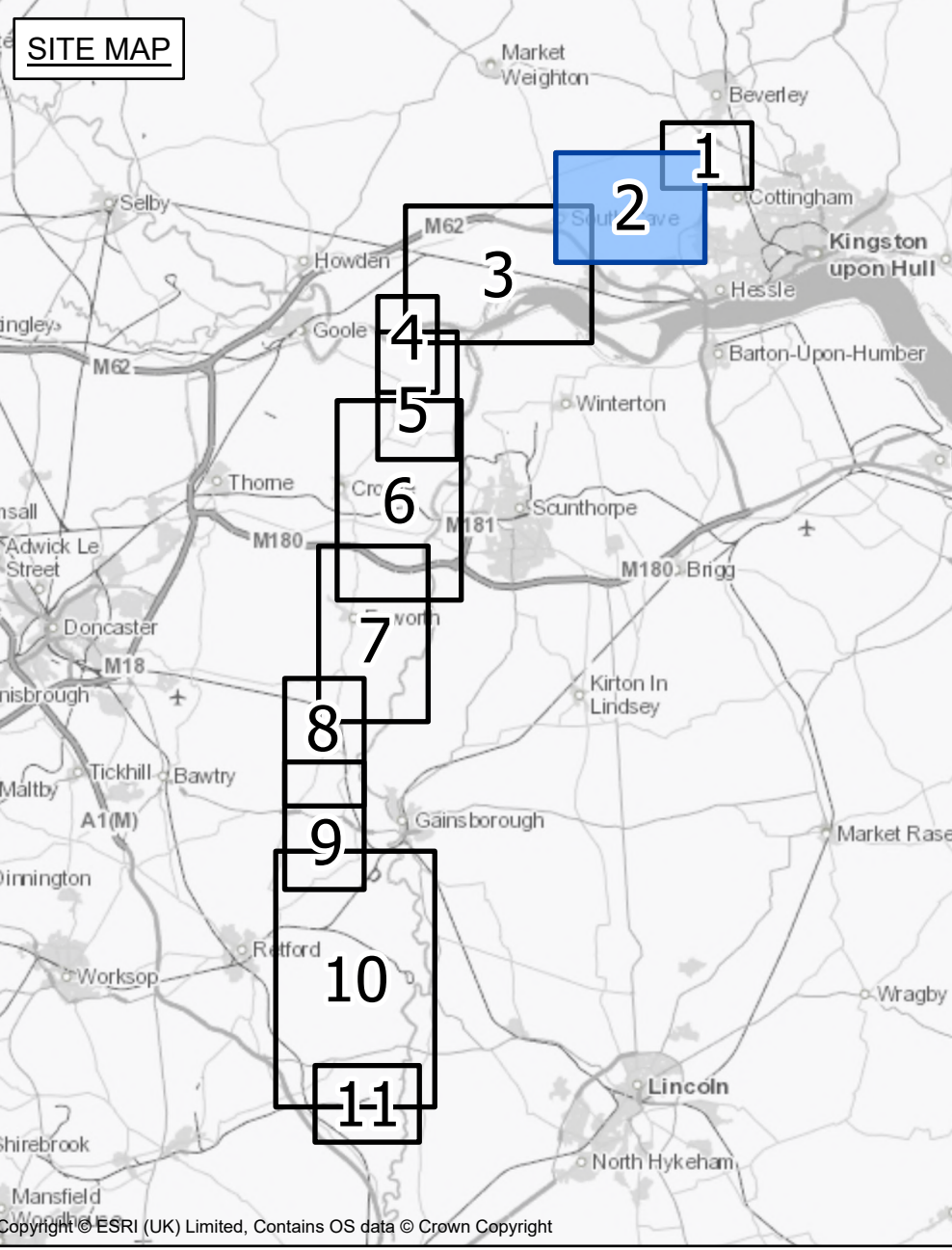


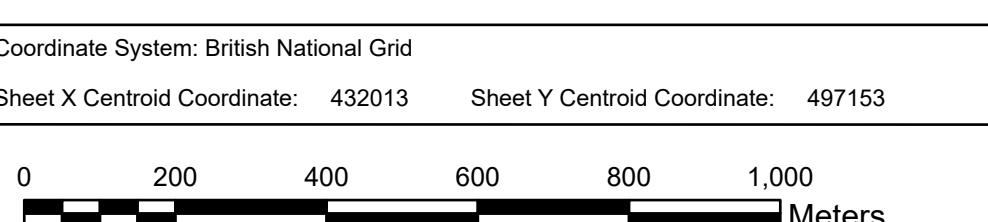


NATIONAL GRID  
 NORTH HUMBER TO HIGH MARNHAM  
 S.42 CONSULTATION KEY PLAN  
 ROUTE SECTION 2 (SHEET 1 OF 1)  
 EAST RIDING OF YORKSHIRE COUNCIL



- LEGEND**
- ROUTE SECTION BOUNDARY
  - SHEET INDEX
  - DRAFT ORDER LIMITS

**Notes**  
 This drawing is scaled at paper size A0, therefore any prints taken at smaller sizes will affect accuracy of the measurement units and should not be scaled against.



BACKGROUND MAPPING INFORMATION HAS BEEN REPRODUCED FROM THE ORDNANCE SURVEY BY PERMISSION OF ORDNANCE SURVEY OF THE CONTROLLER OF HIS MAJESTY'S STATIONERY OFFICE. CROWN COPYRIGHT ORDNANCE SURVEY ©. BLUESKY INTERNATIONAL LTD ©. NATIONAL GRID ELECTRICITY - 100024241.

A	Issue	Date	Remarks	MTH	MG	TF

NATIONAL GRID  
 NORTH HUMBER TO HIGH MARNHAM  
 S.42 CONSULTATION KEY PLAN  
 ROUTE SECTION 2 (SHEET 1 OF 1)  
 EAST RIDING OF YORKSHIRE COUNCIL

Application Number	EN020034
National Grid Drawing Reference	NHM-NG-ENG-PLN-0005
Scale	1:10,000
Sheet Size	A0
Sheet	SHEET 1 OF 1
Issue	A

2