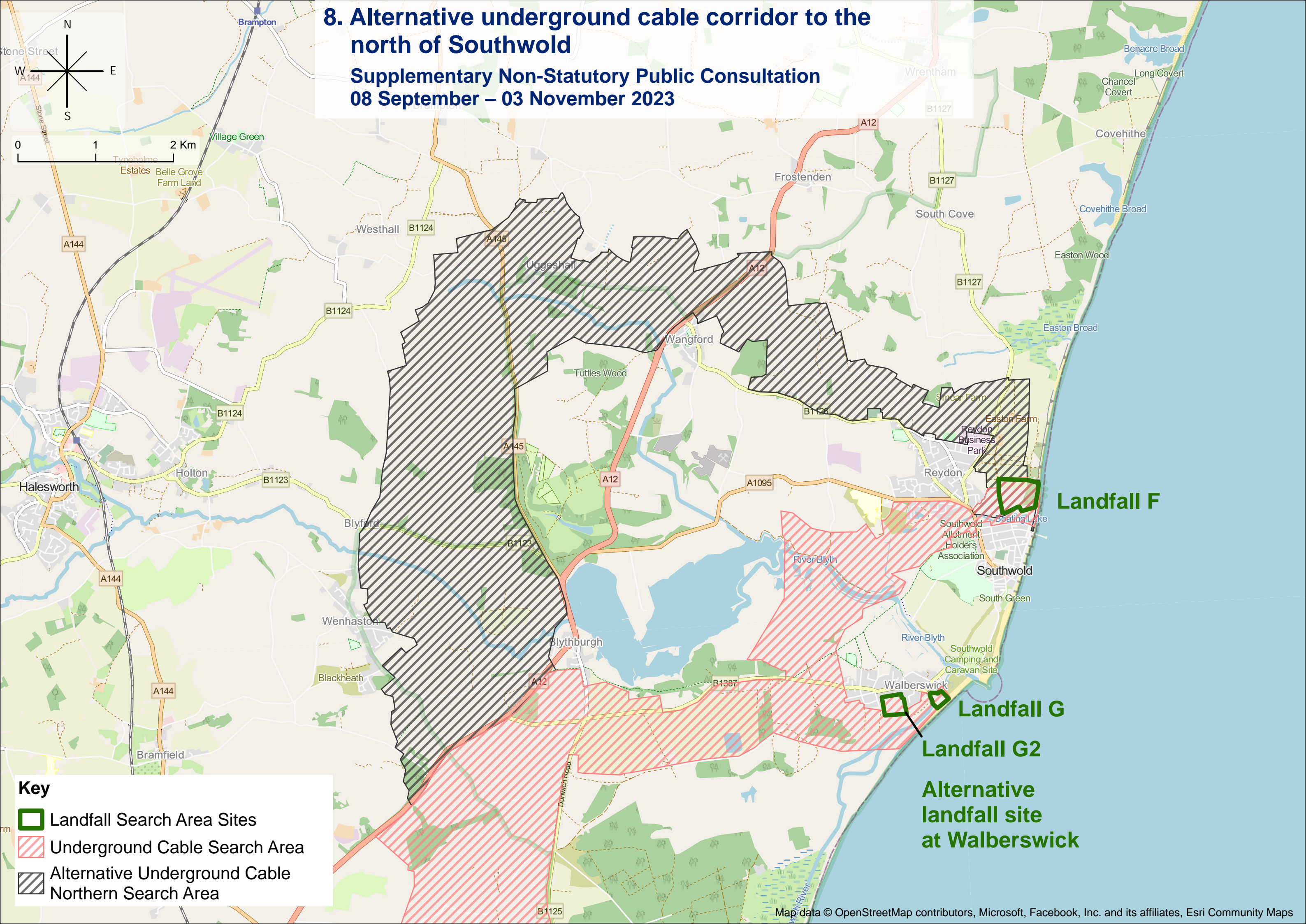


8. Alternative underground cable corridor to the north of Southwold

Supplementary Non-Statutory Public Consultation
08 September – 03 November 2023



Key

- Landfall Search Area Sites
- Underground Cable Search Area
- Alternative Underground Cable Northern Search Area

Landfall F

Landfall G

Landfall G2

Alternative landfall site at Walberswick

8. Alternative Landfall Location Options

LionLink Supplementary Non-Statutory Public Consultation

08 September – 03 November 2023



Key

- Landfall Search Area Sites
- Underground Cable Search Area

A 2 hectare area is required for construction at the landfall location.

An approximate 2ha area drawn to scale

