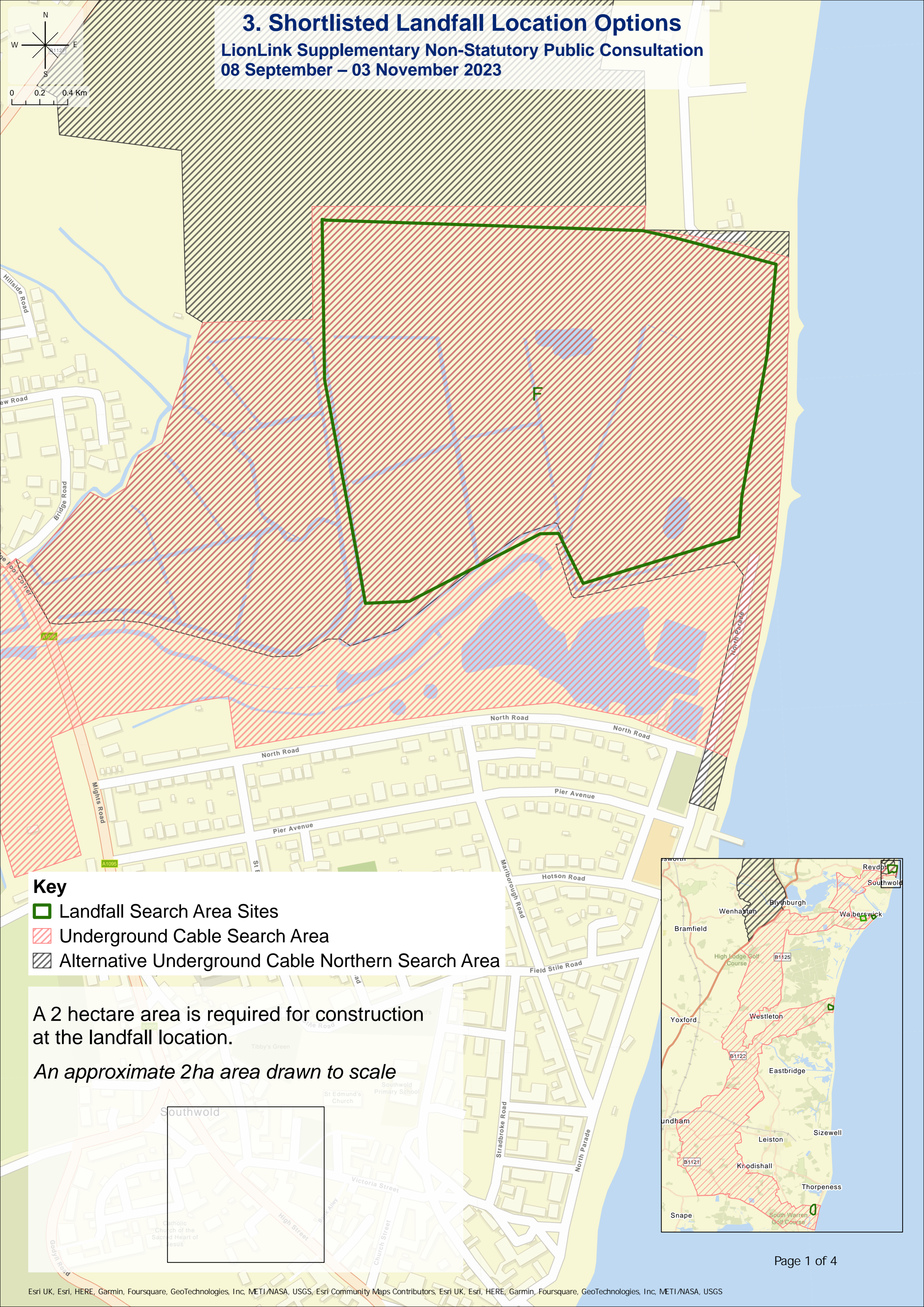
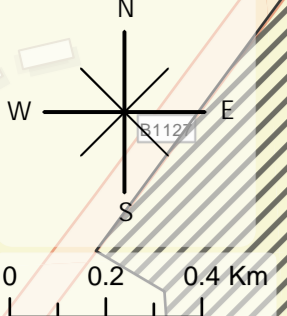


3. Shortlisted Landfall Location Options

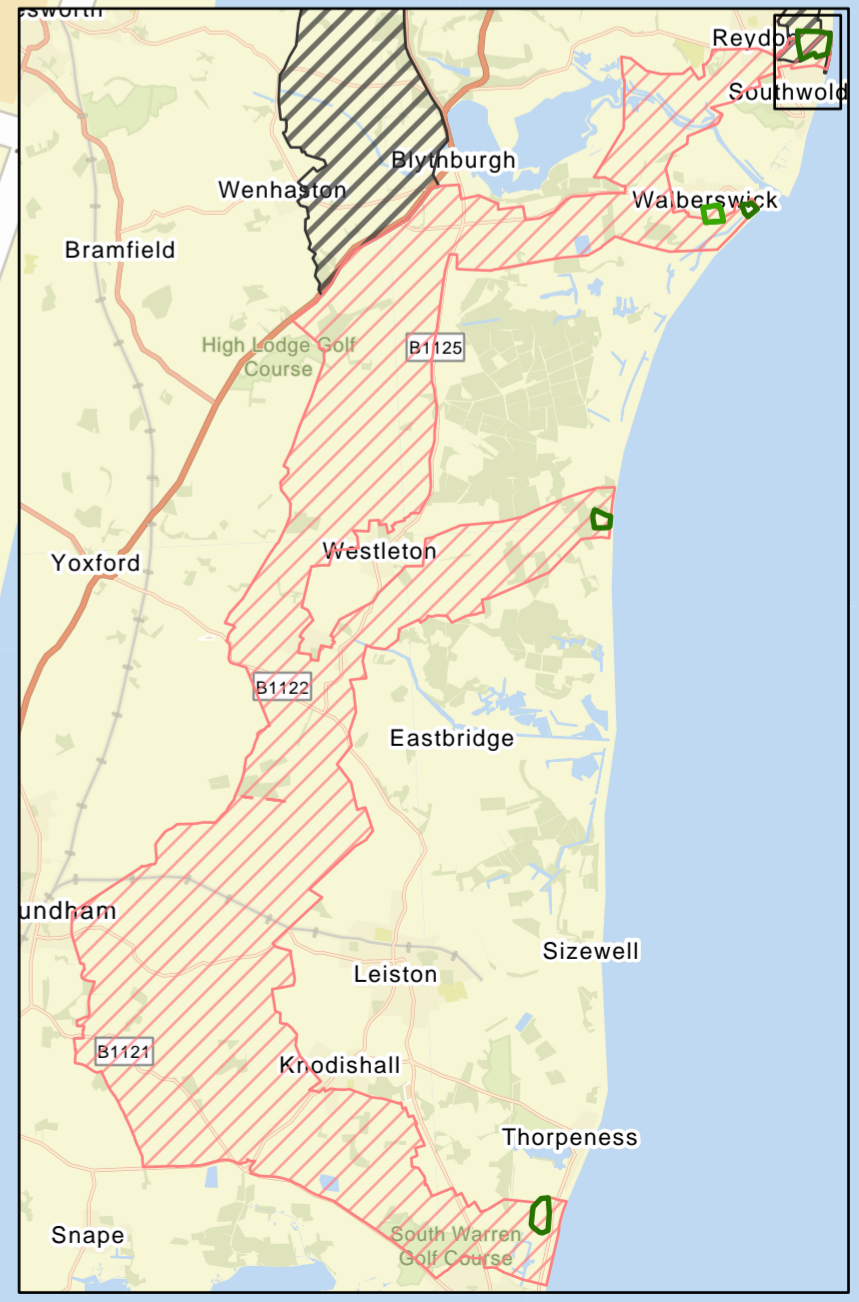
LionLink Supplementary Non-Statutory Public Consultation
08 September – 03 November 2023



- Key**
- Landfall Search Area Sites
 - Underground Cable Search Area
 - Alternative Underground Cable Northern Search Area

A 2 hectare area is required for construction at the landfall location.

An approximate 2ha area drawn to scale



3. Shortlisted Landfall Location Options

LionLink Supplementary Non-Statutory Public Consultation
08 September – 03 November 2023


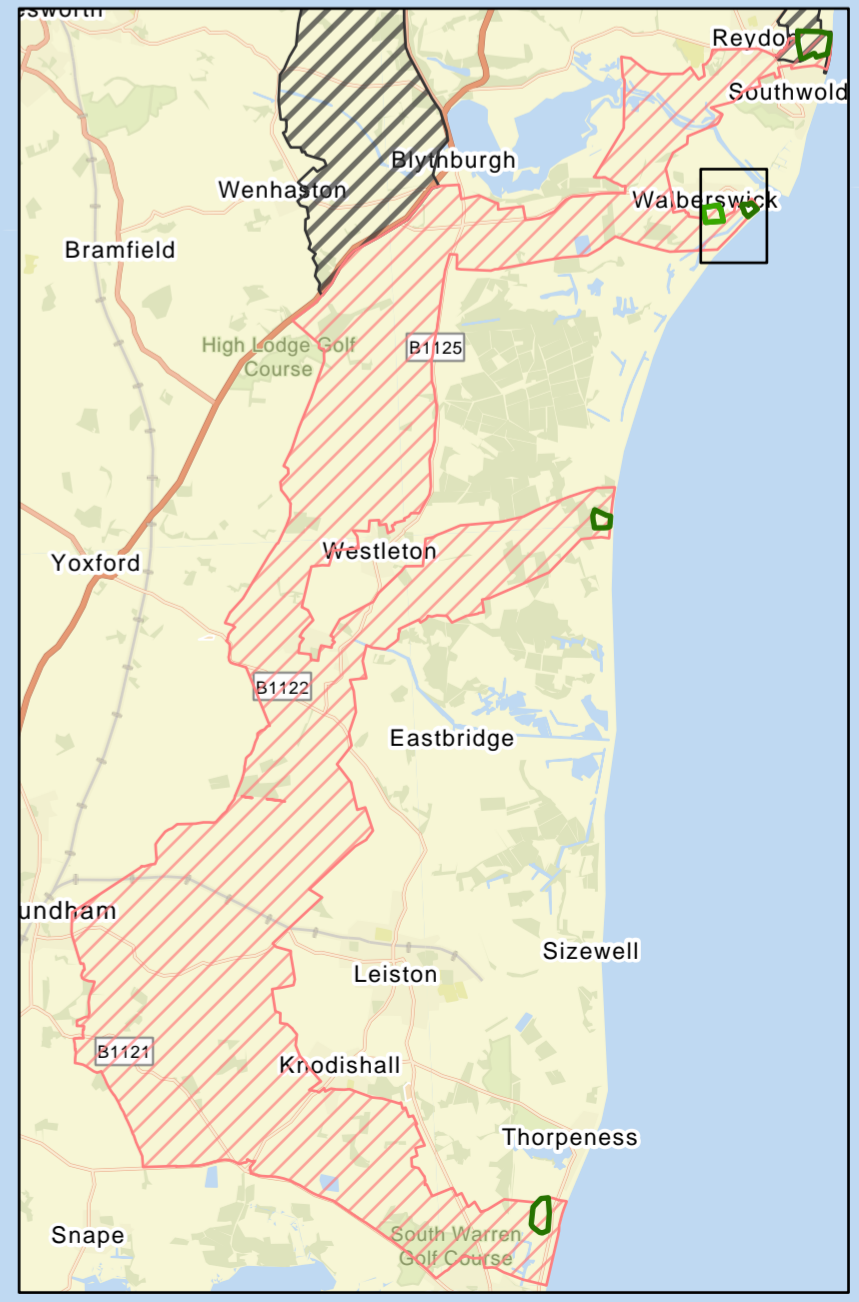


Key

- Landfall Search Area Sites
- Underground Cable Search Area

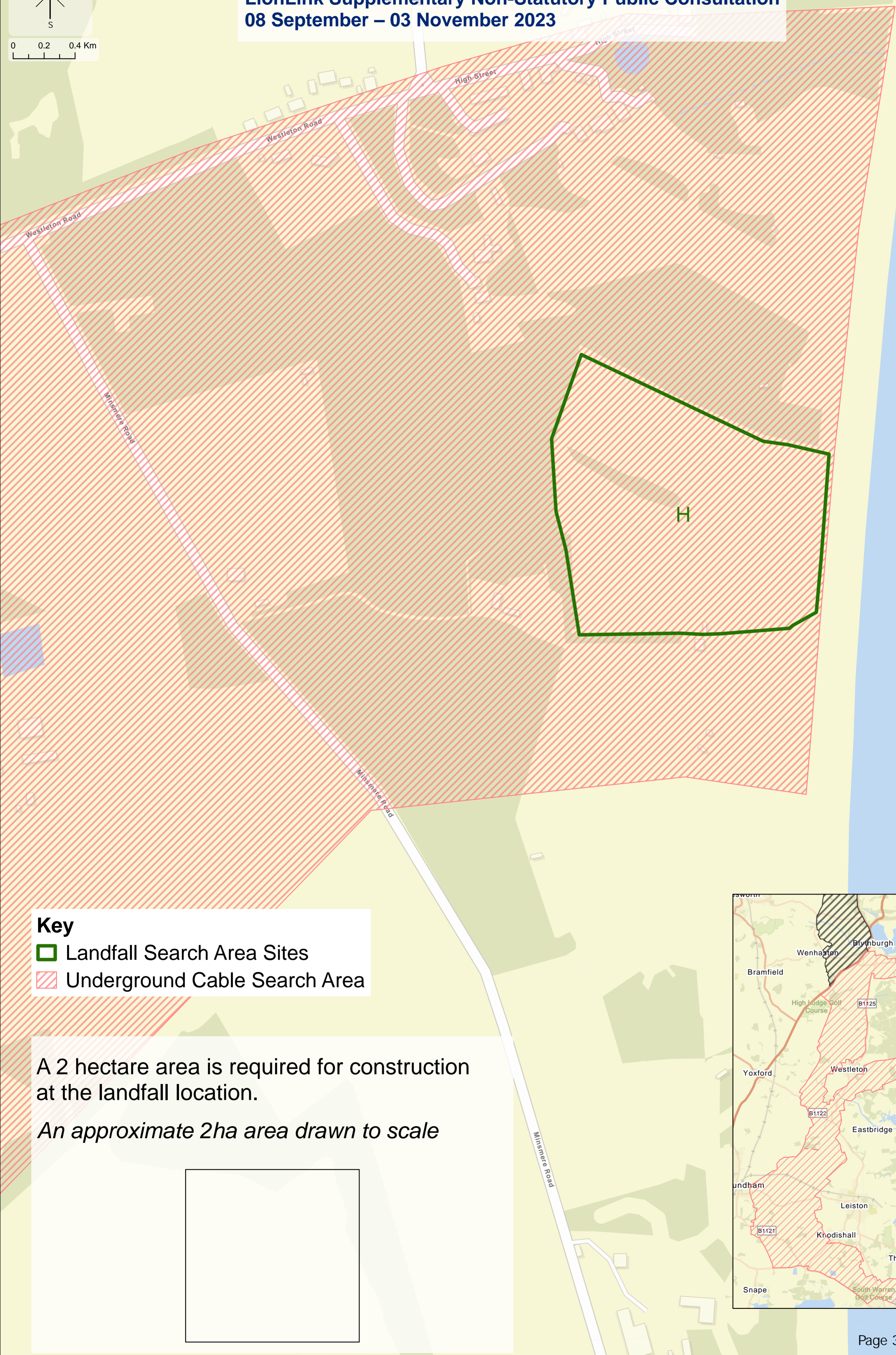
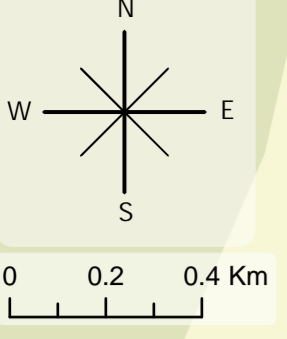
A 2 hectare area is required for construction at the landfall location.

An approximate 2ha area drawn to scale

3. Shortlisted Landfall Location Options

LionLink Supplementary Non-Statutory Public Consultation
08 September – 03 November 2023

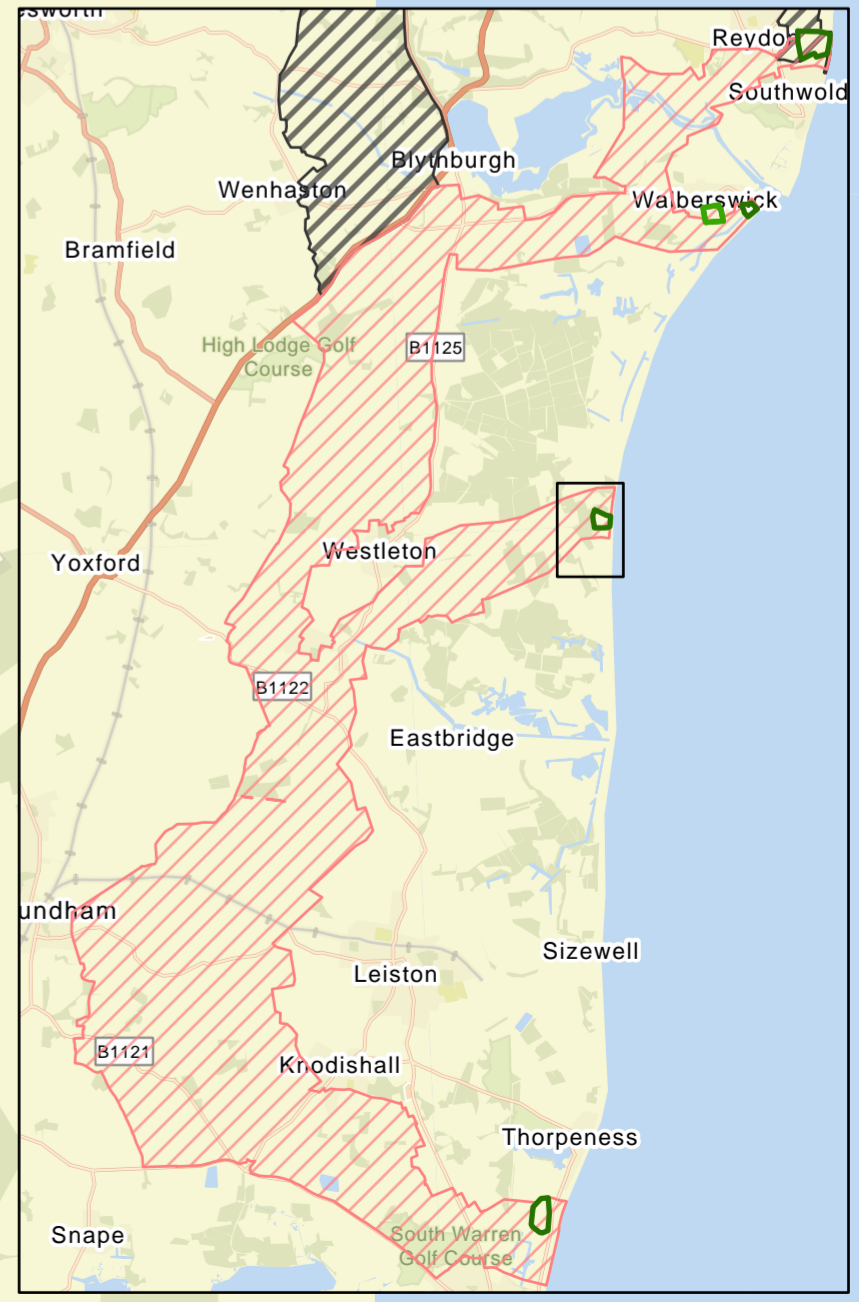
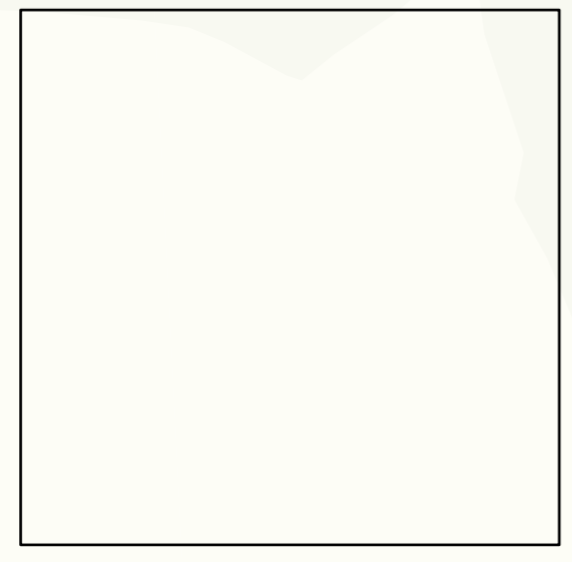


Key

- Landfall Search Area Sites
- Underground Cable Search Area

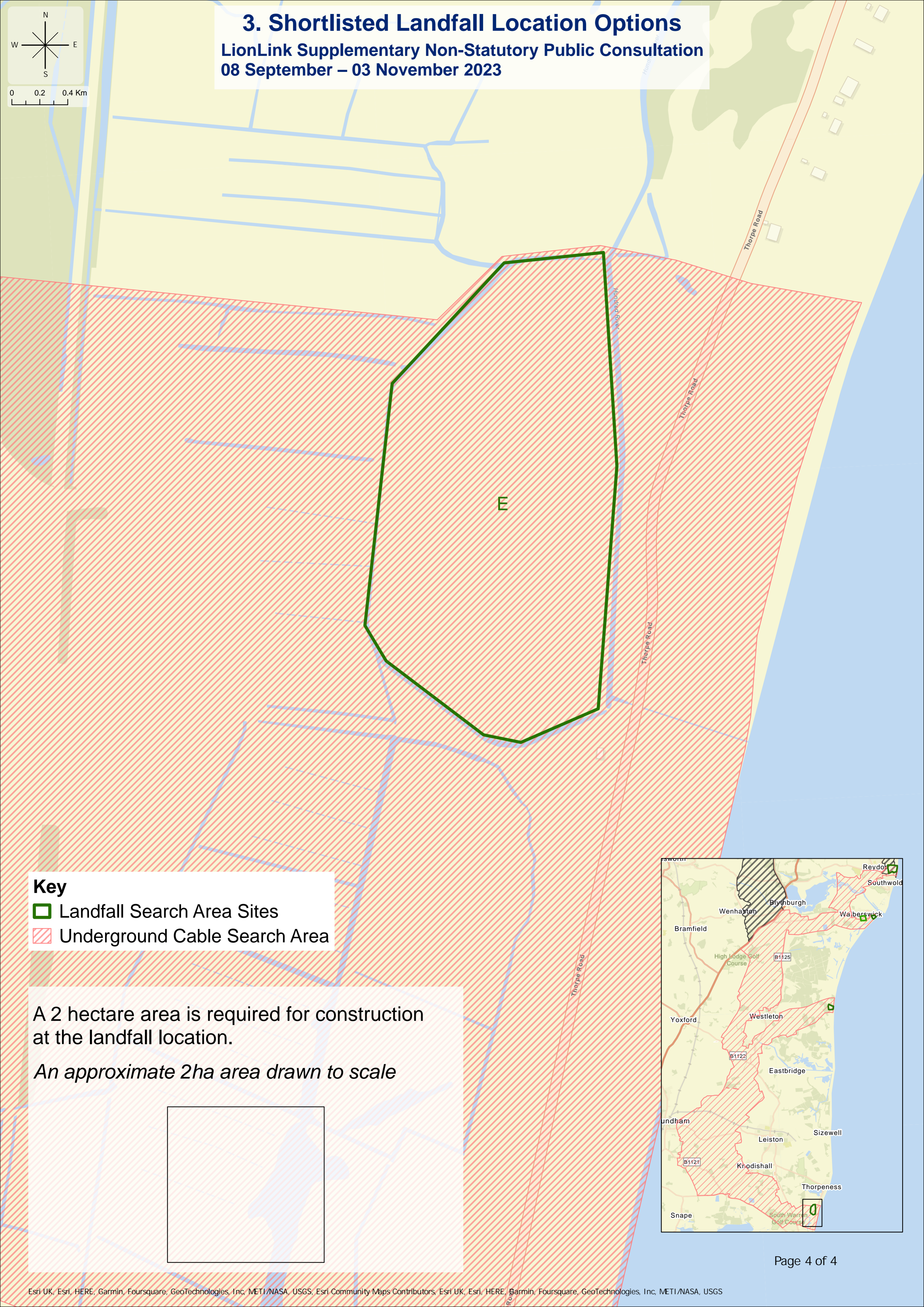
A 2 hectare area is required for construction at the landfall location.

An approximate 2ha area drawn to scale



3. Shortlisted Landfall Location Options

LionLink Supplementary Non-Statutory Public Consultation
08 September – 03 November 2023



Key

- Landfall Search Area Sites
- Underground Cable Search Area

A 2 hectare area is required for construction at the landfall location.

An approximate 2ha area drawn to scale

