

**Q1.**

**State two advantages of generating electricity using nuclear power stations. [2 marks]**

---

---

---



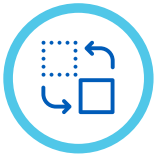
**Q2.**

**State two environmental issues caused by generating electricity using nuclear power stations. [2 marks]**

---

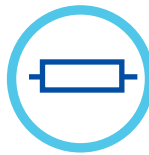
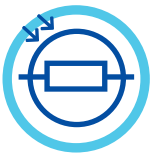
---

---



**Q3.**

**What is the correct circuit symbol for a fuse?**



**Q4.**

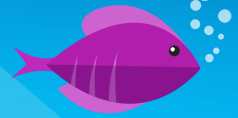
**Coal is a non-renewable energy resource. Name two other non-renewable energy resources. [2 marks]**

---

---

---





**Q5.**

**Electrical power is transferred from power stations to the National Grid. What is the National Grid? Circle one.**



**A system of cables and pylons.**



**A system of cables and transformers.**



**A system of cables, transformers and power stations.**



**Q6.**

**An island has a large number of wind turbines and a coal-fired power station. The island needs to use the electricity generated by the coal-fired power station at certain times. Choose one reason why.**



**Wind is a renewable energy resource.**



**Wind turbine power output is constant.**



**The power output of wind turbines is unpredictable.**



**The fuel cost for wind turbines is very high.**



**Q7.**

**It is important that scientists develop new energy resources. Choose one reason why. Circle one.**



**All energy resources are running out.**

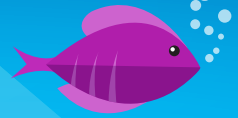


**All energy resources are used to generate electricity.**



**Most energy resources have negative environmental effects.**





**Q8.**

**Match the descriptions with the correct energy source.**

**biofuel**

**coal**

**geothermal**

**nuclear**

**waves**



**Energy from the Earth's core is used to heat water.**



**Fission of uranium nuclei is used to heat water.**



**Gases from rotting plant material are burned to heat water.**



**Q9.**

**Use the correct answer from the box to fill in the blank spaces below. [3 marks]**

**Chemical | Electrical | Kinetic | Nuclear | Sound | Wind | Turbine**

**1**

**A battery stores ..... energy which is transferred into electrical energy.**

**2**

**An electric motor transfers electrical energy usefully into ..... energy.**

**3**

**A motor wastes energy as ..... energy and as energy that heats the surroundings.**



**Q10.**

**Which of these is a non-renewable source of energy?**



**Geothermal.**



**Natural gas.**

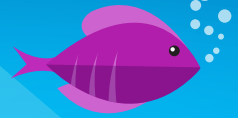


**Tidal.**

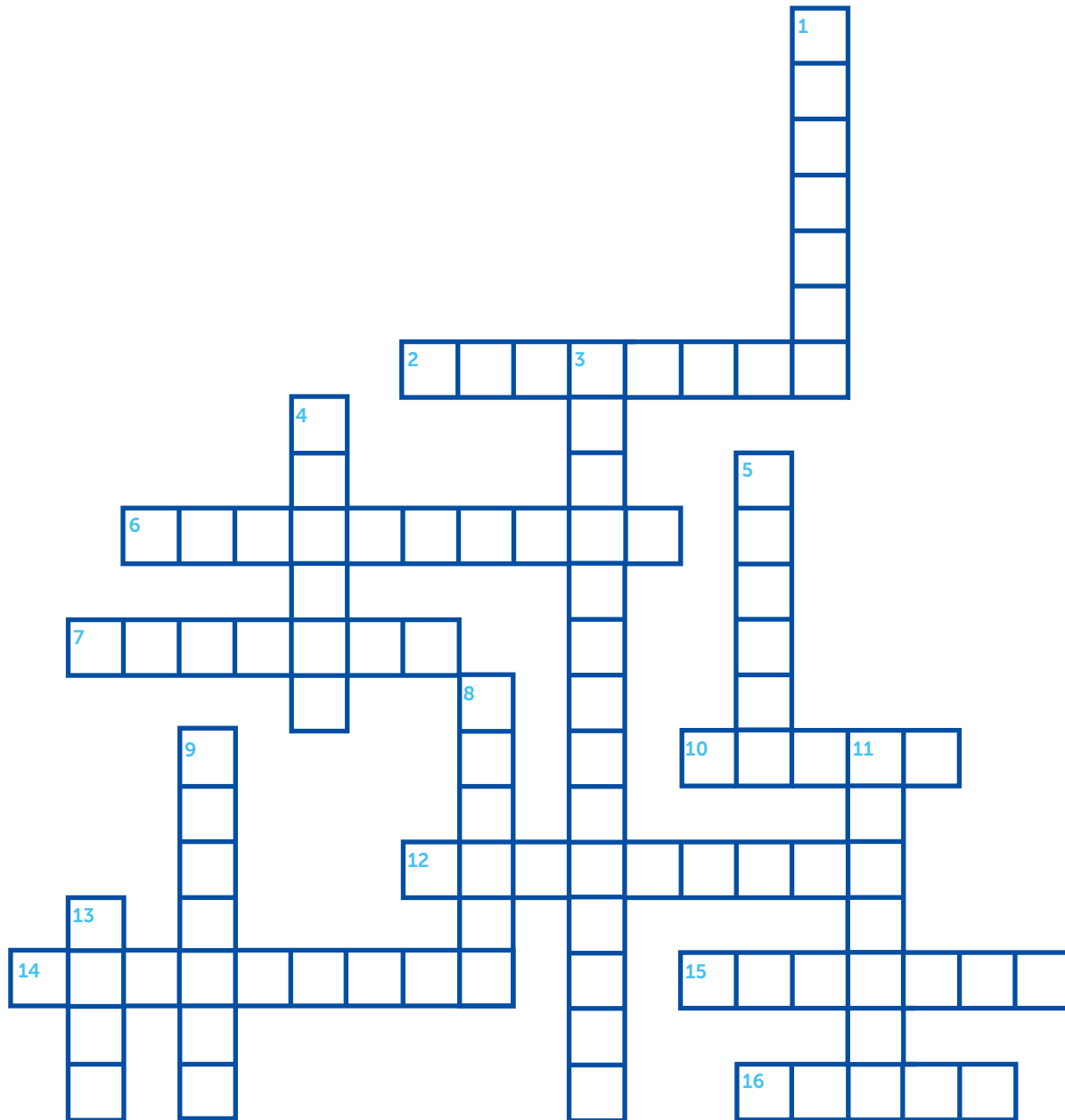


**Solar.**



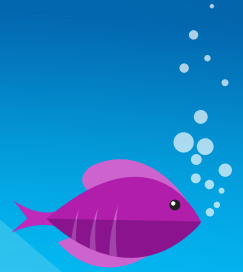


## Energy crossword



# Energy Education Centre

## GCSE Questions



## Energy crossword

### Across

2. A person who designs safe and efficient energy systems

---

6. A type of energy formed by the movement of water

---

7. Rotting garbage produces this type of gas

---

10. The UK North Sea Link site is located in

---

12. Energy that can be replenished is

---

14. Used to measure electricity

---

15. The average weather measurements over a long period of time

---

16. Power from the sun

### Down

1. Energy released during fission or fusion, used mostly to generate electricity

---

3. Links the electricity grids of two countries, allowing both to share energy

---

4. North Sea Link connects the UK to

---

5. Fuels include coal and oil

---

8. Solar can be used to heat up water

---

9. The use of organic matter combusting to create energy

---

11. Heat energy is also known as energy

---

13. A metal pollutant that is generated from coal use

NorthSeaLink

