

Fast Reserve

Market Information for Tenders for January 2008

National Grid publishes this information, in order to inform potential participants for the Fast Reserve tender round for January 2008.

Fast Reserve Availability

Our indicative requirement for Fast Reserve in January 2008 is shown on a Settlement Period basis in Figure 1. This requirement covers weekdays, Saturdays, Sundays and Bank Holidays.

Fast Reserve Daily Requirement for January 2008

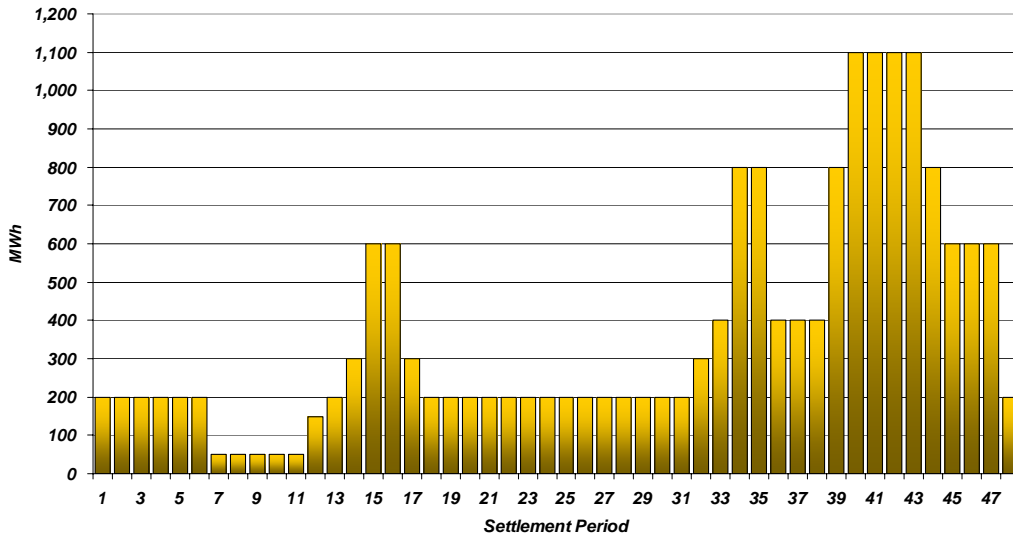


Figure 1

Figure 1 gives an indication of the times of day when Fast Reserve is most useful to National Grid. The actual amount of Fast Reserve "holding" varies from day to day, according to system conditions.

Fast Reserve Utilisation

Figure 2 shows the daily utilisation of Fast Reserve in the BM and elsewhere during October 2007 and November 2007. The BM information is based on the aggregate of Offers plus Bids accepted to provide Fast Reserve or an equivalent service.

Daily Accepted Fast Reserve Volume

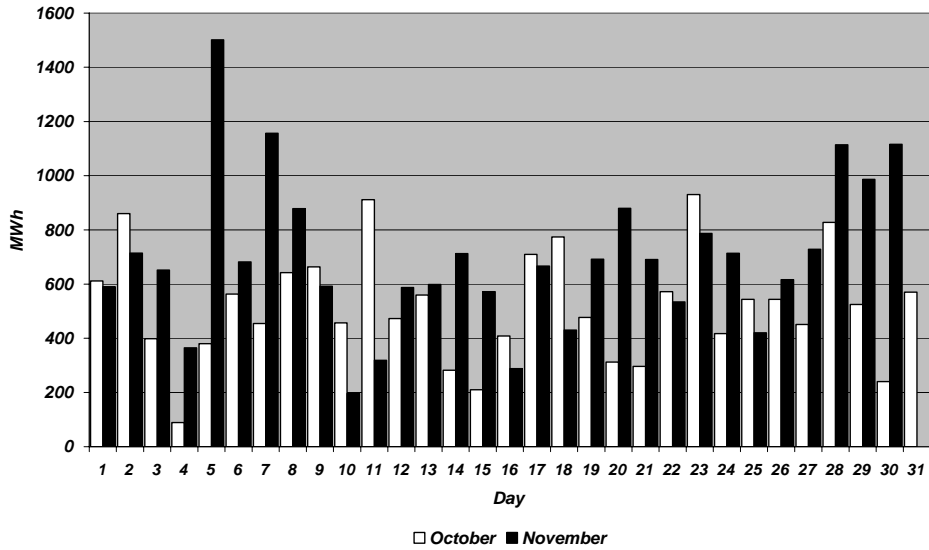


Figure 2

Figure 3 represents this data as total utilisation by Settlement Period across each month. This shows the daily profile of Fast Reserve utilisation.

Period Accepted Fast Reserve Volume

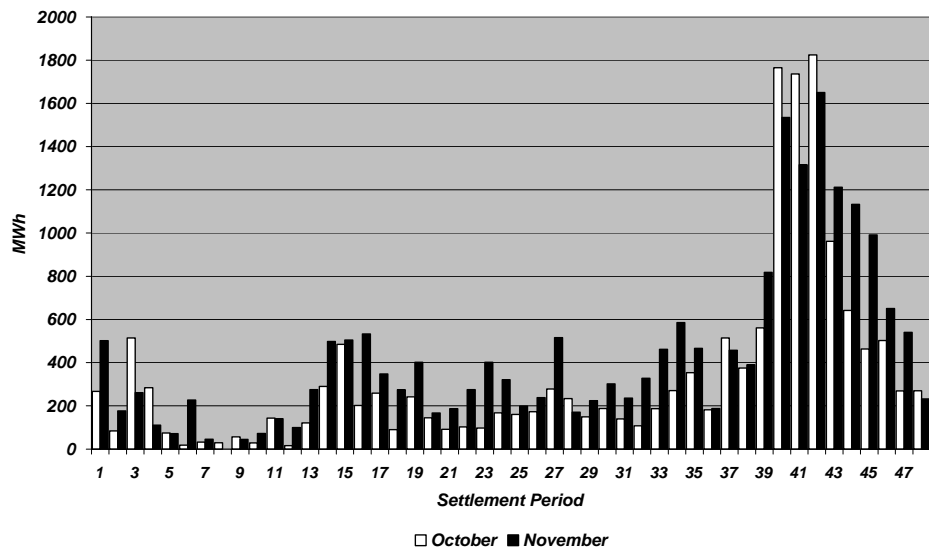


Figure 3

Figure 4 represents the same historical data, as an average utilisation price per Settlement Period for each month.

Period Average Fast Reserve Utilisation Price

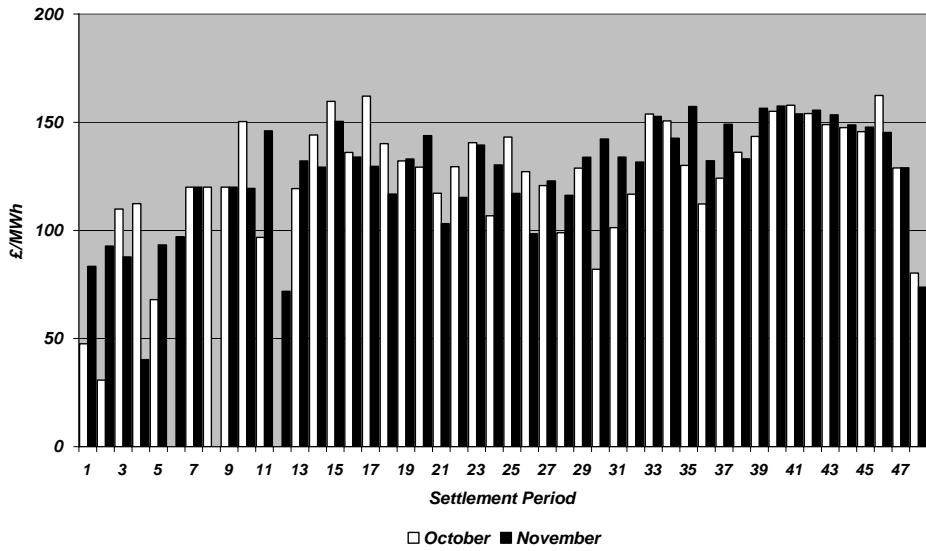


Figure 4

Finally, the same data is used in Figure 5, below, to show the profile of total Fast Reserve utilisation expenditure per Settlement Period for each month.

Period Total Fast Reserve Utilisation Expenditure

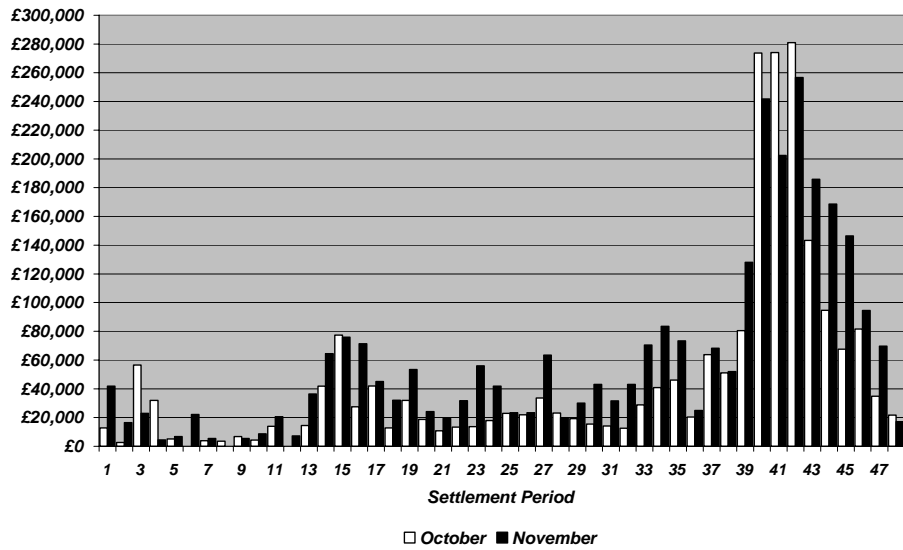


Figure 5

The total volumes of Fast Reserve utilisation of **16.2GWh** for October 2007 and **20.8GWh** for November 2007, broken down into price bands are as follows:

October	Price band (£/MWh range)	Volume (MWh)	Average Price (£/MWh)	Cost (£m)
	2000 to 99999	0	n/a	n/a
OFFERS	1000 to 2000	0	n/a	n/a
	300 to 1000	16	377	0.01
	0 to 300	14,372	147	2.11
Total		14.39GWh		£2.12m
	0 to 300	-1,079	17	-0.02
BIDS	-300 to 0	-656	-180	0.12
	-1000 to -300	-31	-382	0.01
	-2000 to -1000	0	n/a	n/a
	-99999 to -2000	0	n/a	n/a
Total		-1.77GWh		£0.11m
Total		16.15GWh		£2.23m

November	Price band (£/MWh range)	Volume (MWh)	Average Price (£/MWh)	Cost (£m)
	2000 to 99999	0	n/a	n/a
OFFERS	1000 to 2000	0	n/a	n/a
	300 to 1000	83	320	0.03
	0 to 300	19,346	143	2.77
Total		19.43GWh		£2.8m
	0 to 300	-974	13	-0.01
BIDS	-300 to 0	-302	-172	0.05
	-1000 to -300	-77	-458	0.04
	-2000 to -1000	0	n/a	n/a
	-99999 to -2000	0	n/a	n/a
Total		-1.35GWh		£0.07m
Total		20.78GWh		£2.87m

For the month of January 2008, tenders from eligible Service Providers for firm Fast Reserve should be submitted to National Grid by Friday 14th December 2007 (business day 10). National Grid will notify Service Providers of the outcome of the tender assessment by Friday 21st December 2007 (business day 15).

Tenders should be sent for the attention of:

Bea Ennim
Network Operations
National Grid Electricity Transmission plc
National Grid House
Warwick Technology Park
Gallows Hill
Warwick
CV34 6DA

Tenders can be sent by fax to Bea Ennim on 01926 656612.