

Fast Reserve

Market Information for Tenders for April 2003

National Grid publishes the following information, in order to inform participants in the Fast Reserve tender round for April 2003.

Fast Reserve Availability

Our indicative daily requirement for Fast Reserve in April is shown on a Settlement Period basis in Figure 1. This requirement covers weekdays, Saturdays and Sundays.

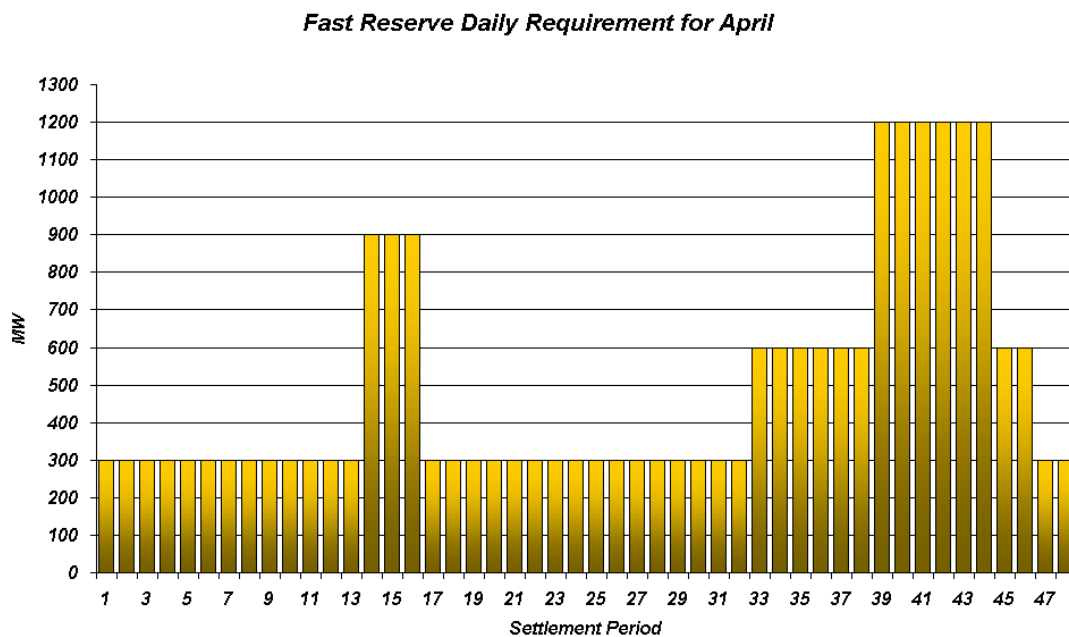


Figure 1

This figure gives an indication of the times of day when Fast Reserve is most useful to us. The actual amount of Fast Reserve "holding" varies from day to day, according to system conditions, but on average amounts to approximately one half of these requirements.

Fast Reserve Utilisation

Figure 2 shows the daily utilisation of Fast Reserve in the BM during January (1st – 31st January 2003) and February (1st – 28th February 2003). This information is based on the aggregate of Offers plus |Bids| accepted to provide Fast Reserve in the BM.

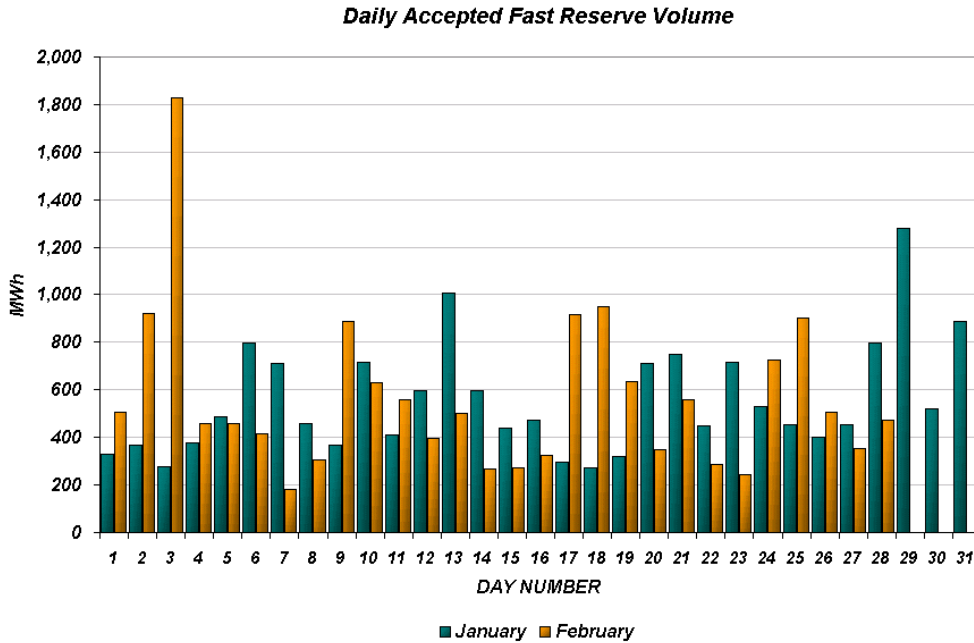


Figure 2

Figure 3 re-presents this data, as an average utilisation per Settlement Period across each month. This shows the daily profile of Fast Reserve utilisation.

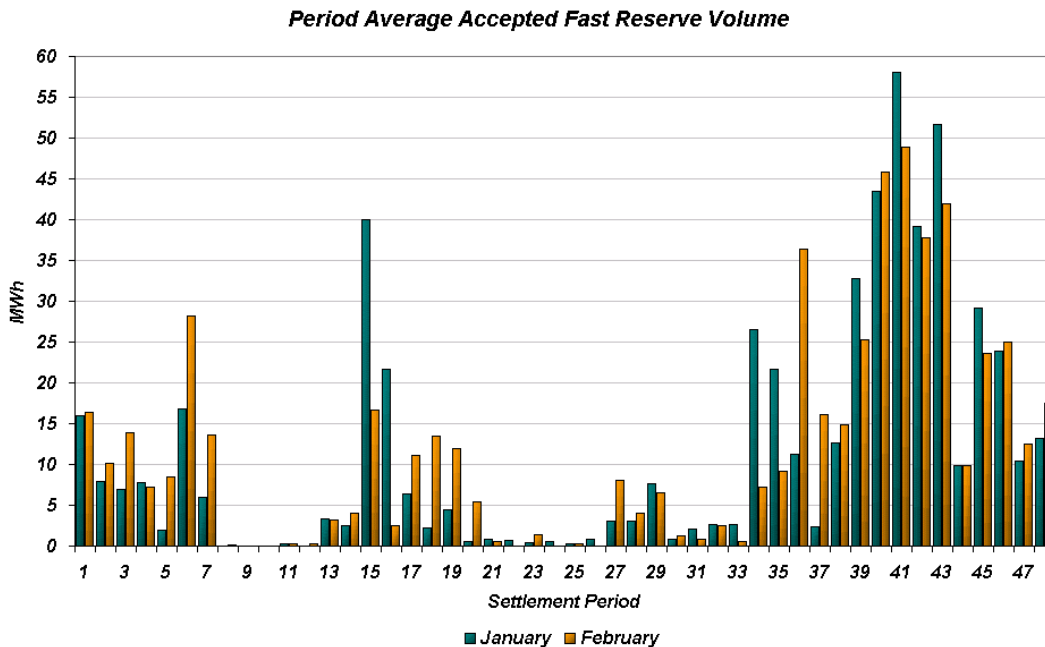


Figure 3

The total volumes of Fast Reserve utilisation of **17.2 GWh** for January and **15.8 GWh** for February break down into price bands as follows:

JANUARY	Price band (£/MWh range)	Volume (MWh)	Average Price (£/MWh)	Cost (£m)
OFFERS	2000 to 10000	0	n/a	n/a
	1000 to 2000	0	n/a	n/a
	300 to 1000	340	525	0.18
	0 to 300	15,243	155	2.36
Total		15.6 GWh		£2.5 m
BIDS	0 to 300	0	n/a	n/a
	-300 to 0	-1,482	-76	0.11
	-1000 to -300	-178	-588	0.10
	-2000 to -1000	0	n/a	n/a
	-10000 to -2000	0	n/a	n/a
Total		-1.7 GWh		£0.2 m
Total		17.2 GWh		£2.8 m

February	Price band (£/MWh range)	Volume (MWh)	Average Price (£/MWh)	Cost (£m)
OFFERS	2000 to 10000	0	n/a	n/a
	1000 to 2000	0	n/a	n/a
	300 to 1000	398	464	0.18
	0 to 300	14,326	148	2.12
Total		14.7 GWh		£2.3 m
BIDS	0 to 300	0	n/a	n/a
	-300 to 0	-761	-96	0.07
	-1000 to -300	-321	-621	0.20
	-2000 to -1000	0	n/a	n/a
	-10000 to -2000	0	n/a	n/a
Total		-1.1 GWh		£0.3 m
Total		15.8 GWh		£2.6 m

The above charts and tables show that from January to February Fast Reserve utilisation fell by ~8%. Overall Fast Reserve spend decreased to £2.6m for February, a ~7% reduction from January. As a daily average February Totals are approximately in line with January.

For April, the demand shape moves towards a summer trend. As such Fast Reserve utilisation patterns for April are expected to be similar to those seen in April/May 2002. Overall Fast Reserve utilisation for April is forecast to fall from levels seen in February and March, particularly for overnight periods.

For the month of **April**, tenders from eligible Service Providers for a firm Fast Reserve service should be submitted to National Grid by close of business on Friday 14th March. National Grid will notify Service Providers of the outcome of the tender assessment by Friday 21st March.