

Gas Monthly Winter Update
December 2011

Gas Supply Build Up.....Page 2

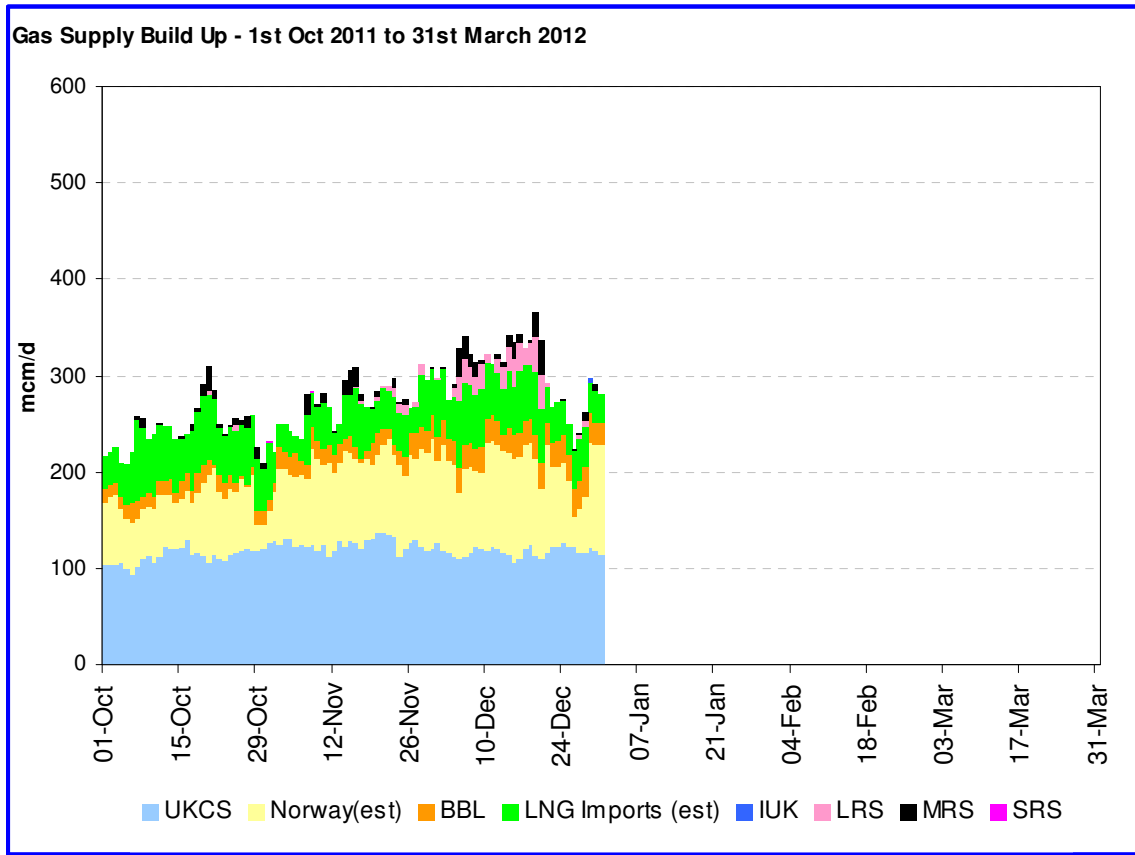
Gas DemandsPage 2

Storage Deliverability against Safety Monitor.....Page 3

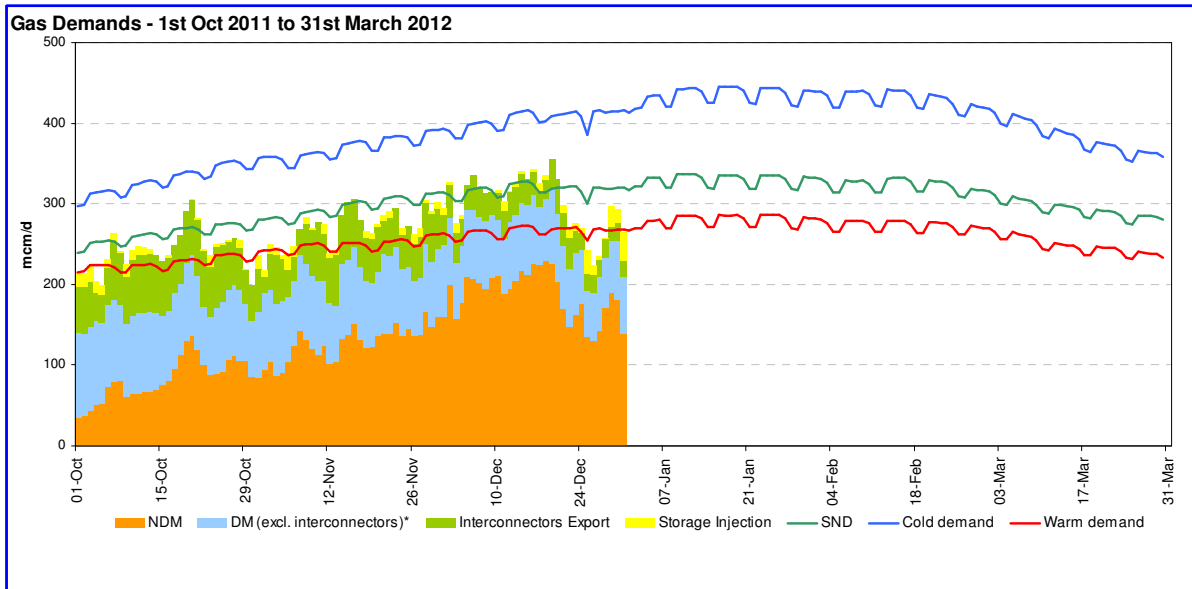
Storage Graphs.....Page 3

Glossary.....Page 4

Gas Supply

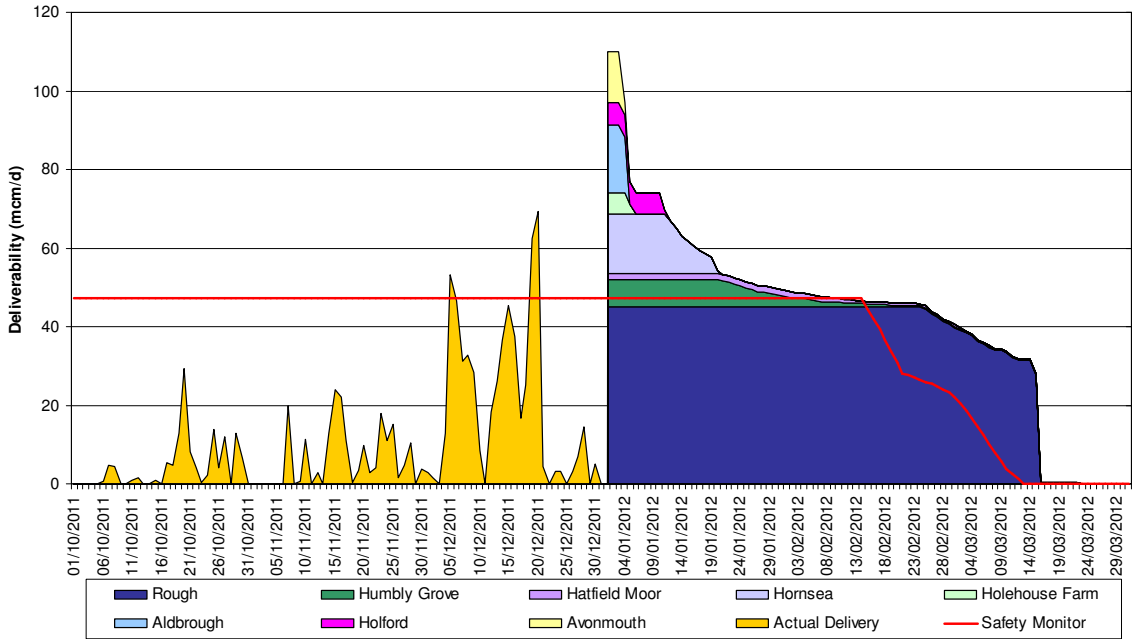


Gas Demands

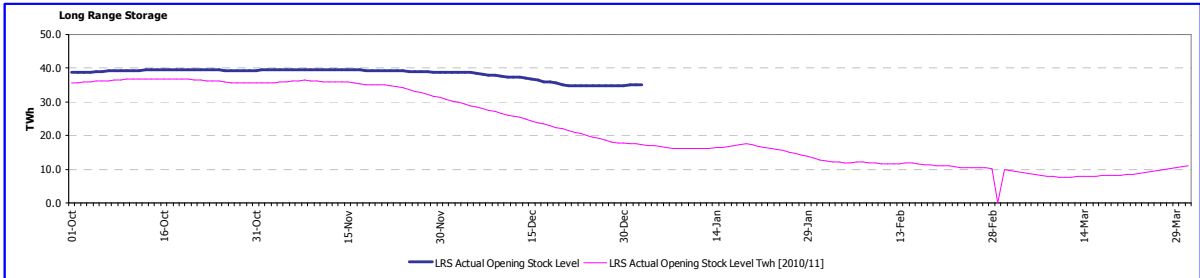


Storage Deliverability against Safety Monitor

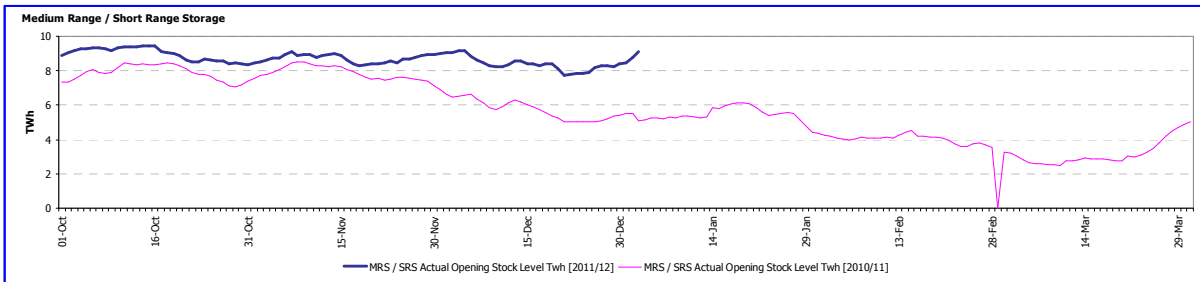
Storage Deliverability Against Safety Monitor



Long Range Storage



Medium Range / Short Range Storage



Glossary

◆ **Gas Supply Build-up**

- ◆ All historic outturn data - from 4 October to present.
- ◆ Gas Supply Build-up: shows UKCS, Norway (Langeled, Vesterled [Estimate] and Tampen/Gjoa via FLAGS [Estimate]), Interconnector supplies (IUK and BBL), LNG imports (IOG, Milford Haven and Teesport [Estimate]) and withdrawal from storage (LRS, MRS and SRS). All in mcm/day. Exports to Europe and injections into storage are not shown.

◆ **Gas Demands (Actual, Normal and 1 in 20 weekly cold and Warm)**

- ◆ Exports to Europe and storage injection are included in the Cold, Warm and Normal curves.
- ◆ Daily seasonal normal demands are the demands that are forecast to occur in seasonal normal weather. The seasonal weather is derived from the Met Office climate forecasts for the Energy Phase 2 (EP2) project.
- ◆ Cold and warm demand profiles are calculated from the demand models and cold and warm composite weather variables calculated from weather data from October 1928 to September 2010.
- ◆ The cold/warm curves are 1 in 20 weekly values.
- ◆ Actual demand is shown broken down into storage injection (LRS, MRS, SRS), Interconnector export (IUK), LDZ Non Daily Metered (LDZ NDM) (smaller Distribution Network demands including domestic, commercial and smaller industrial) and Daily Metered (DM) (mainly large industrials and power station demand).

◆ **Storage Deliverability Safety Monitor**

- ◆ Actual Delivery data reflects actual storage withdrawal volumes since 1st October.
- ◆ Available Storage Deliverability calculations are based on the Max Use methodology. Max Use calculations are based on Max Withdrawal allowing for reductions as stock levels fall. This Available Storage Deliverability is displayed on the graph at site specific level.
- ◆ Current day (D) storage supply is assumed to be the difference between forecast demand and NSS (if any). The red line shows the safety monitor deliverability requirement.
- ◆ The available storage is not expected to be heavily used before December, hence available stocks as reported now will shift considerably to the right. The deliverability relates to a one off daily requirement rather than a sustained requirement.

◆ **Gas Storage Levels**

- ◆ Medium-range/Short-range storage (MRS/SRS) facilities include Hornsea, Hole House Farm, Hatfield Moor, Humbly Grove, Aldbrough and Avonmouth.
- ◆ The long-range storage (LRS) facility is Rough.
- ◆ Storage stock levels refer to the quantities of gas held and represent shipper stock only (no OM stock).
- ◆ Conversion used in figures is: 11.0 GWh = 1 mcm (using a standard CV of 39.6 MJ/m³).