

Fast Reserve

Market Information for Tenders for February 2010

National Grid publishes this information, in order to inform potential participants for the Fast Reserve tender round for February 2010.

Fast Reserve Availability

Our indicative requirement for Fast Reserve in February 2010 is shown on a Settlement Period basis in Figure 1. This requirement covers weekdays, Saturdays, Sundays and Bank Holidays.

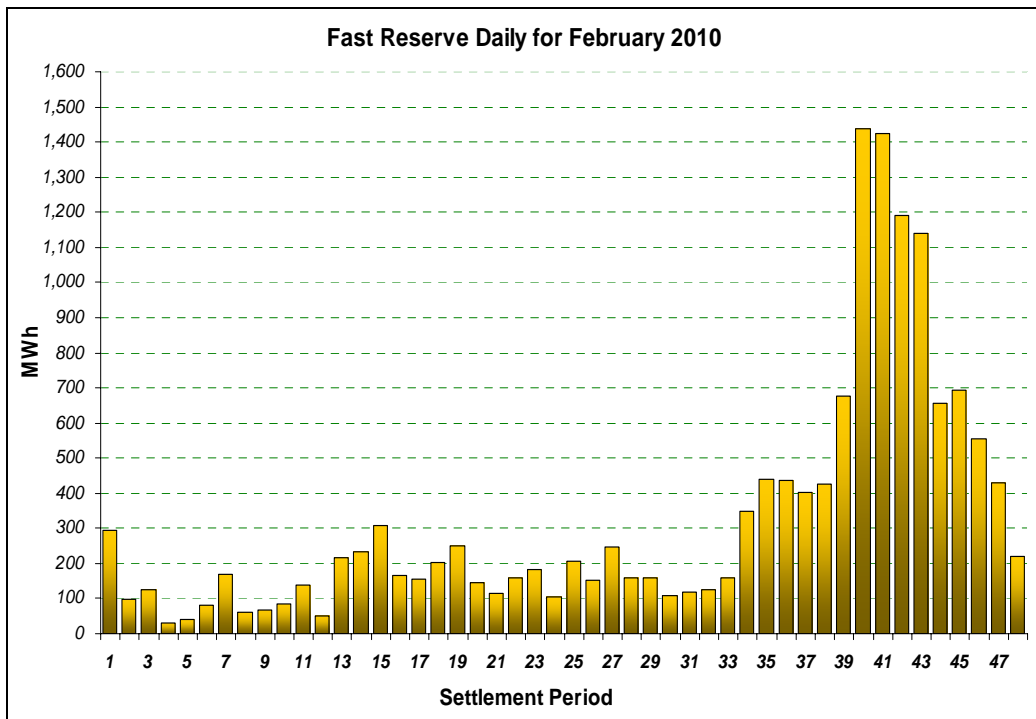


Figure 1

Figure 1 gives an indication of the times of day when Fast Reserve is most useful to National Grid. The actual amount of Fast Reserve "holding" varies from day to day, according to system conditions.

Fast Reserve Utilisation

The following BM information is based on the aggregate of Offers plus Bids accepted to provide Fast Reserve or an equivalent service. Note that the data for December 2009 contains both out-turn and forecast.

Figure 2 shows the daily utilisation of Fast Reserve in the BM and elsewhere during November 2009 and December 2009.

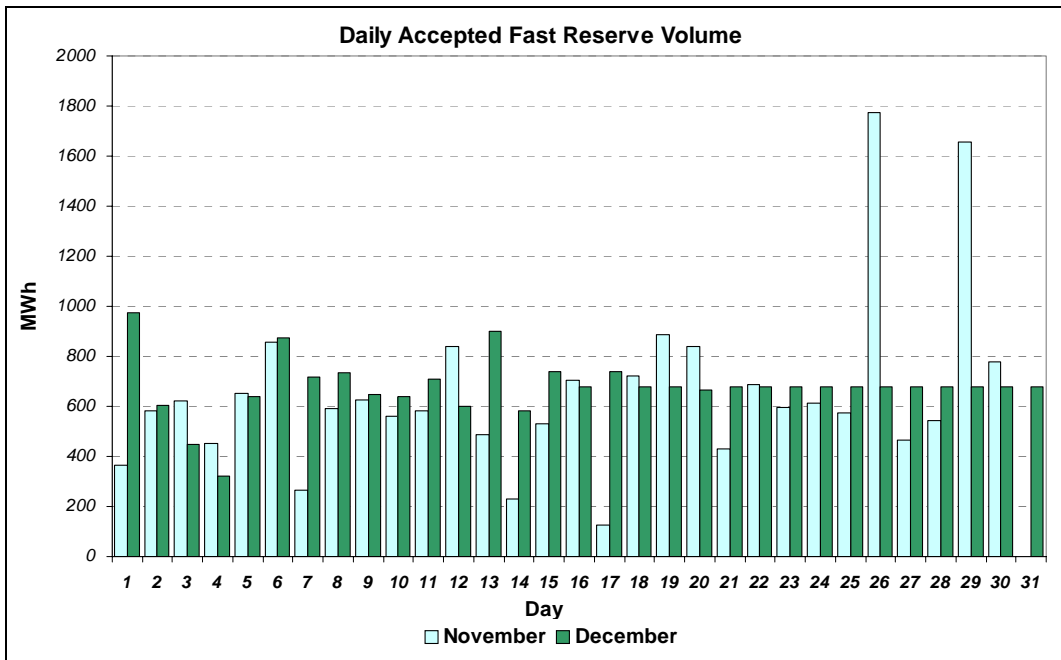


Figure 2

Figure 3 represents this data as total utilisation by Settlement Period across each month. This shows the daily profile of Fast Reserve utilisation.

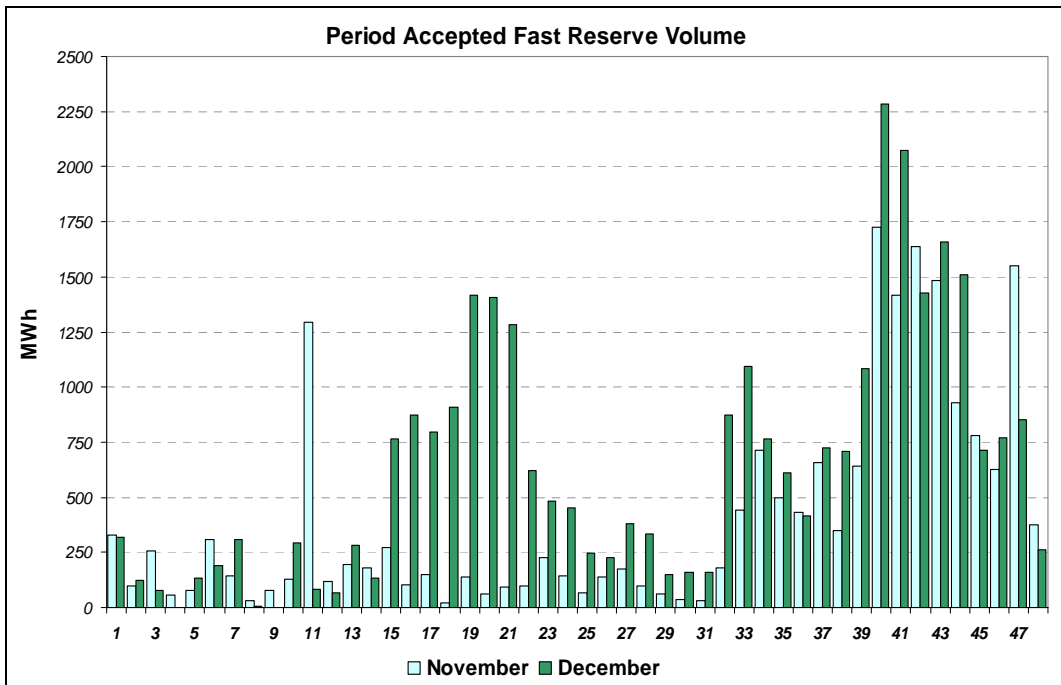


Figure 3

Figure 4 represents the same historical data, as an average utilisation price per Settlement Period for each month.

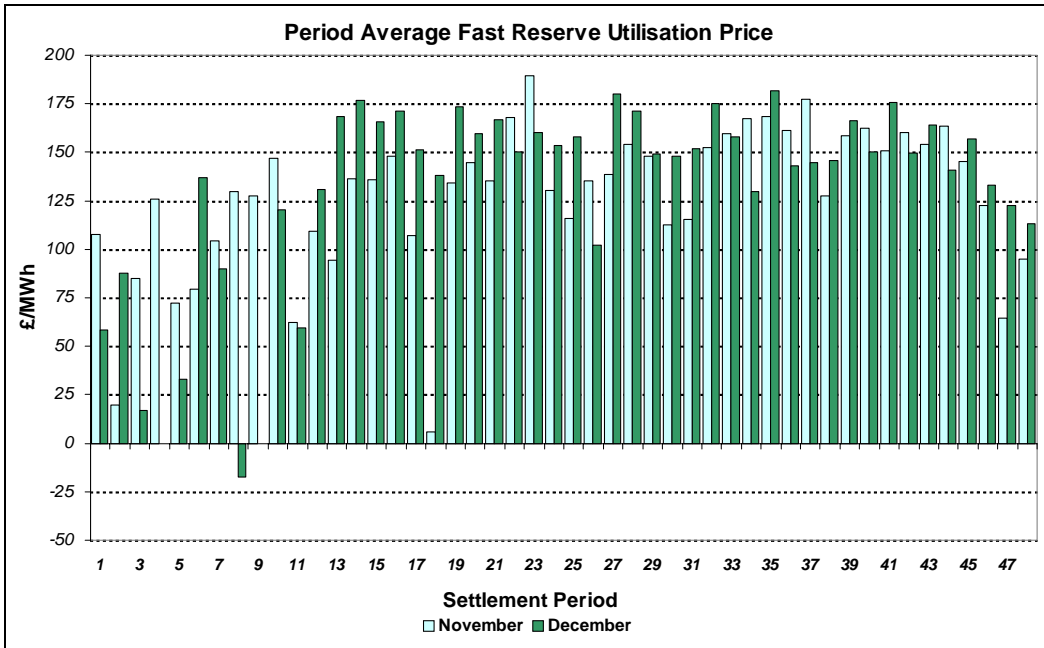


Figure 4

Finally, the same data is used in Figure 5, below, to show the profile of total Fast Reserve utilisation expenditure per Settlement Period for each month.

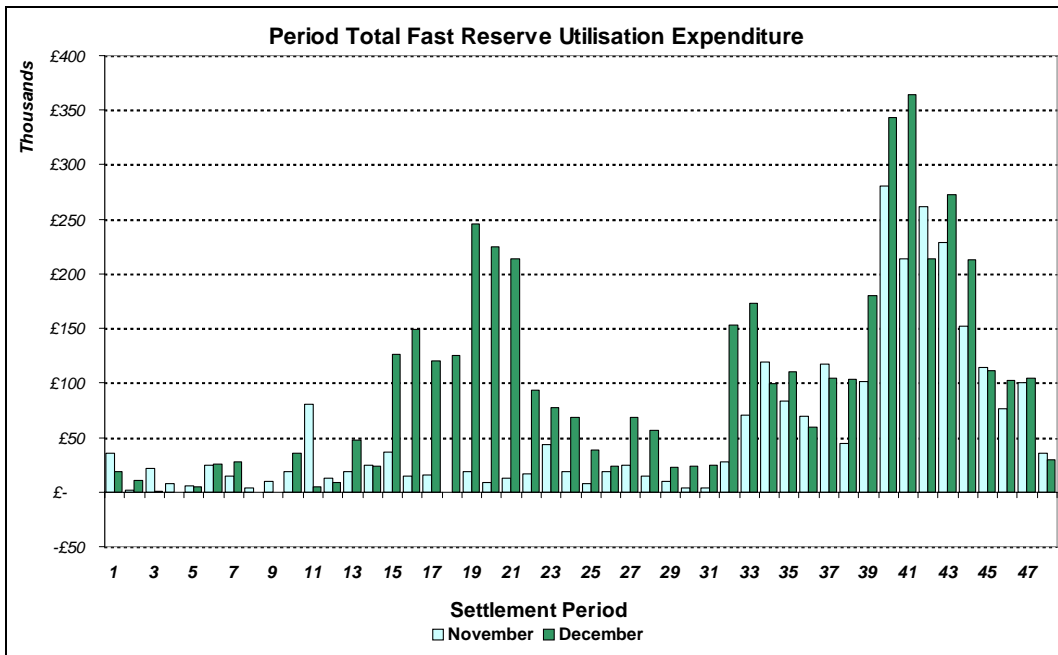


Figure 5

The total volumes of Fast Reserve utilisation of **17.5GWh** for November and **27.6GWh** for December, broken down into price bands are as follows:

November	Price band (£/MWh range)	Volume (MWh)	Average Price (£/MWh)	Cost (£m)
OFFERS	2000 to 99999	0	n/a	n/a
	1000 to 2000	0	n/a	n/a
	300 to 1000	53	338	0.02
	0 to 300	17,446	144	2.52
Total		17.5GWh		£2.54m
BIDS	0 to 300	-1,643	14	-0.02
	-300 to 0	-331	-173	0.06
	-1000 to -300	-165	-465	0.08
	-2000 to -1000	0	n/a	n/a
	-99999 to -2000	0	n/a	n/a
Total		-2.14GWh		£0.11m
Total		19.64GWh		£2.65m

December	Price band (£/MWh range)	Volume (MWh)	Average Price (£/MWh)	Cost (£m)
OFFERS	2000 to 99999	0	n/a	n/a
	1000 to 2000	0	n/a	n/a
	300 to 1000	78	339	0.03
	0 to 300	27,526	164	4.52
Total		27.6GWh		£4.54m
BIDS	0 to 300	-2,477	21	-0.05
	-300 to 0	-122	-167	0.02
	-1000 to -300	-296	-464	0.14
	-2000 to -1000	0	n/a	n/a
	-99999 to -2000	0	n/a	n/a
Total		-2.9GWh		£0.11m
Total		30.5GWh		£4.65m

For the month of February 2010, tenders from eligible Service Providers for firm Fast Reserve should be submitted to National Grid by Monday 4 January 2010 (business day 1) for multi-month tenders, or Wednesday 6 January 2010 (business day 3) for single month tenders. National Grid will notify Service Providers of the outcome of the tender assessment by Friday 15 January 2010 (business day 10).

Tenders should be sent for the attention of:

Bea Ennim
Network Operations
National Grid Electricity Transmission plc
National Grid House
Warwick Technology Park
Gallows Hill
Warwick
CV34 6DA

Tenders can be sent by fax to Bea Ennim on 01926 656612.