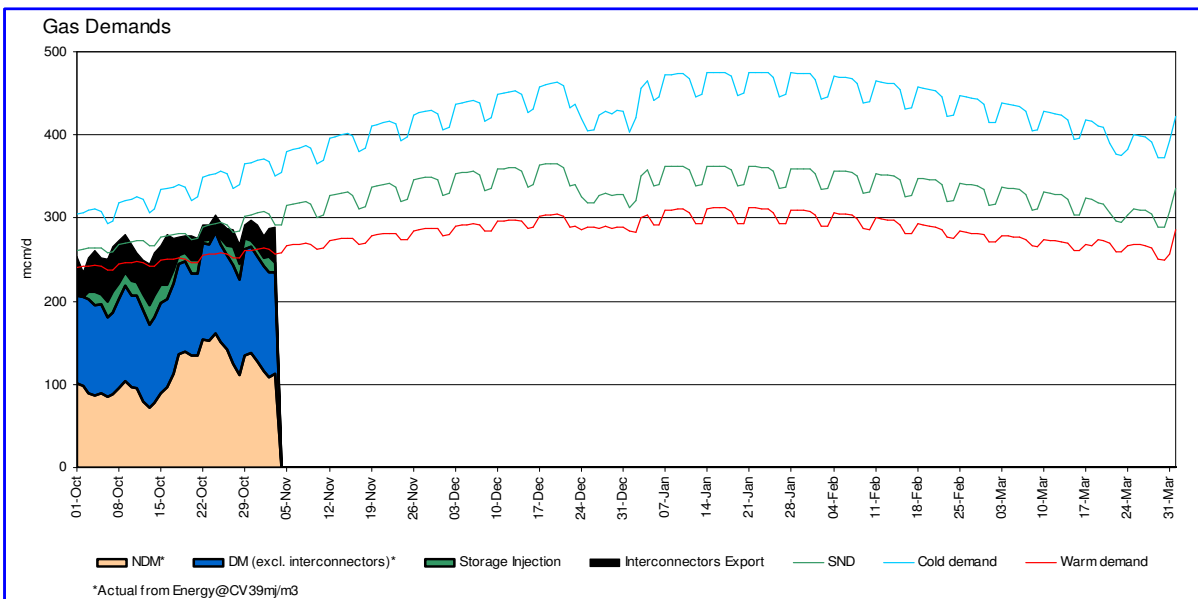
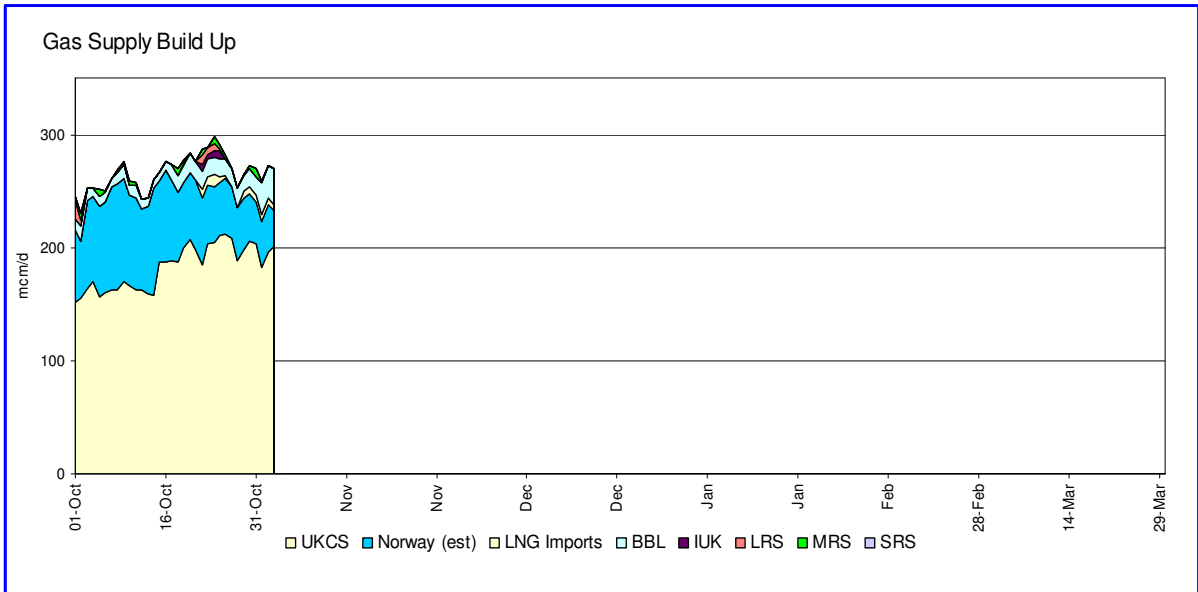
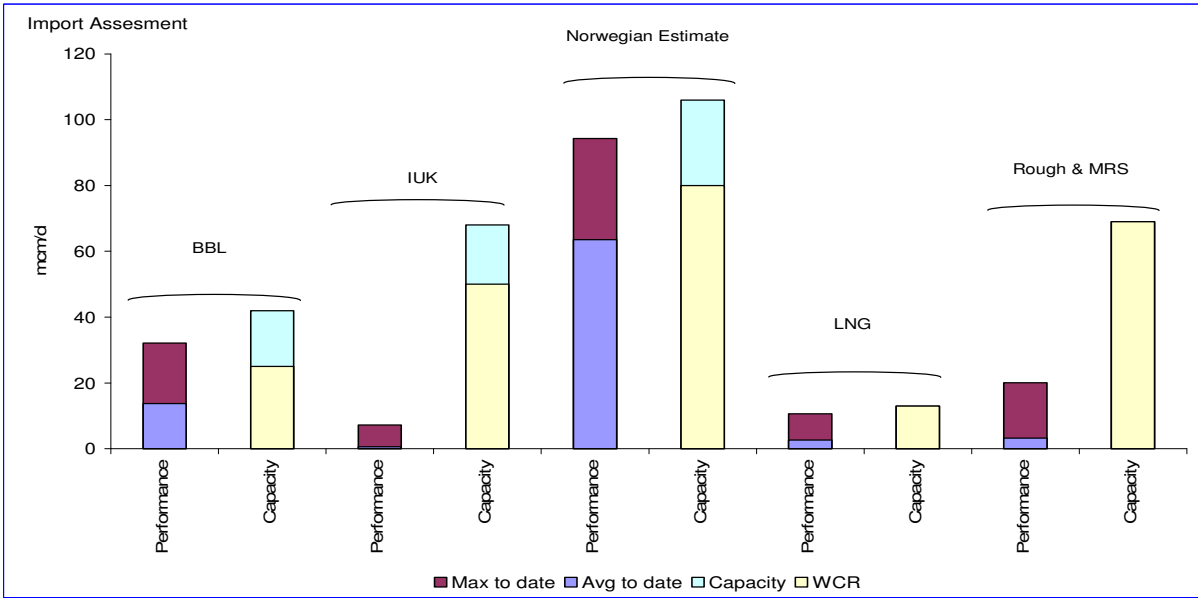
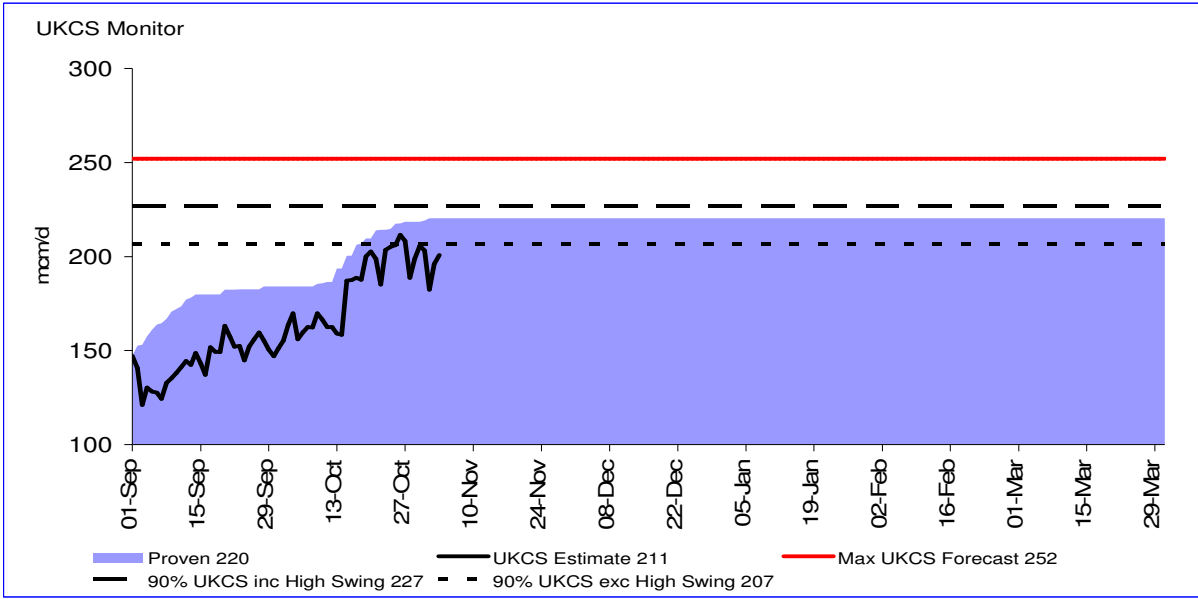
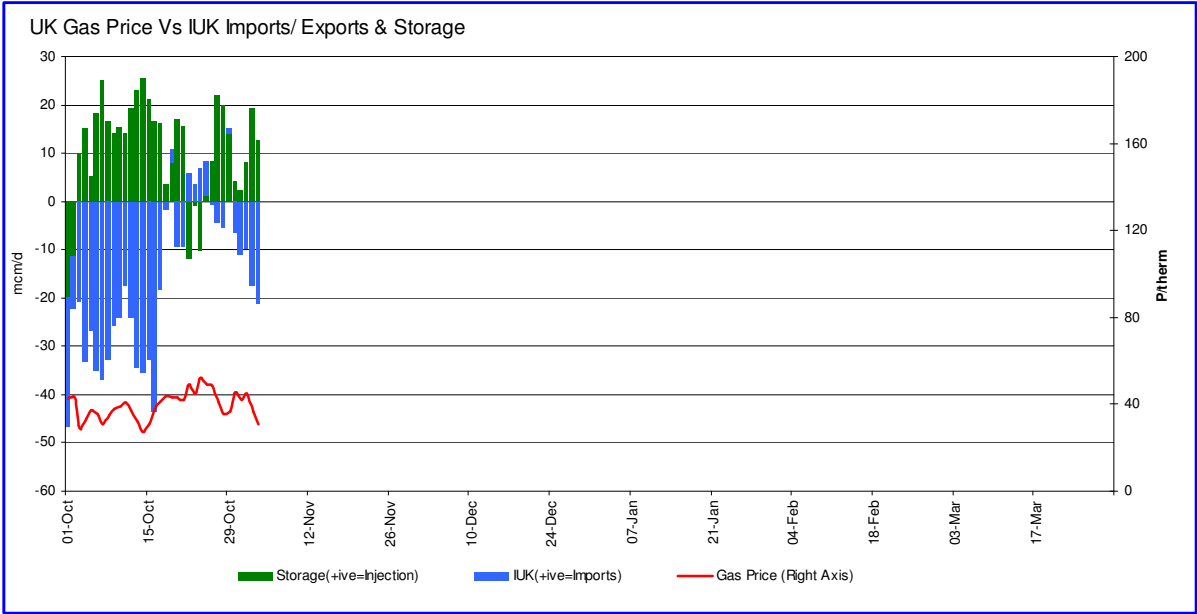


## Gas Monthly Winter Update - November

See glossary on page 5 for guide to all charts:







## **Supply Assumptions**

	Winter Consultation (Sept 2007)	Latest View (5/11/07)	Max to date	Comments
UKCS	227	227	211	All terminals flows broadly in line with forecast except for Bacton where high swing supplies are yet to flow - no change to supply assumptions
Norway	80	80	94	Above forecast but could be lower at higher demands if more gas directed to Continent – no change to supply assumptions
IUK	50	50	7	No demand conditions yet experienced to test assumptions – no change to supply assumptions
BBL	25	25	32	Above forecast but could be lower at higher demands if gas is directed to Continent - no change to supply assumptions
LNG	33	13	11	Due to timing uncertainties and need for prudent approach for SoS analyses, Dragon supplies are now excluded from latest view
Total Non-Storage	415	395	356	
Supply Risk	20	0		Supply risk now utilised
Safety Monitor	395	395		
Other comments - Transfer & Trade may lead to higher flows at Easington with lower flows at donor ASEPs. These in turn and other ASEPs may also be higher due to introduction of Discretionary Interruptible Arrangements. As these are yet to be observed, there is no change to the supply assumptions				

## **Update to Winter Monitors**

Due to timing uncertainties and the need for a prudent approach for security of supply analysis, flows of LNG from Milford Haven for winter 2007/8 are now excluded from our current view. For the demand conditions experienced to date, all other supplies have either met or exceeded our flow forecasts. We are not proposing to modify our view for these flows until they are realised at higher demand conditions.

For further information on the Safety and Firm monitors see 'Safety Monitor Update' on the Storage Information page:

<http://www.nationalgrid.com/uk/Gas/Data/storage/>

## Glossary

### Gas Supply Build-up

- All historic outturn data - from 1 October to present.
- Gas Supply Build-up shows:
  - UKCS
  - Norway (Vesterled (estimate), Langeled and Tampen Link)
  - Interconnector supply (IUK and BBL)
  - LNG imports (IOG and Milford Haven when operational)
  - storage withdrawal (LRS, MRS and SRS)

All in mcm/day.

Exports to Europe and injections into storage are not shown.

### Gas Demand

- Exports to Europe and storage injection are included.
- Daily seasonal normal demands are the demands that are forecast to occur in seasonal normal weather based on the weather between October 1987 and September 2004.
- Cold and warm demand profiles are calculated from the demand models and cold and warm CWVs calculated from weather data from October 1928 to September 2006.
- The cold/warm curves are 1 in 20 weekly values.
- Actual demand shows:
  - storage injection (LRS, MRS, SRS)
  - Interconnector export (IUK)
  - LDZ Non Daily Metered (LDZ NDM) (smaller Distribution Network demands including domestic, commercial and smaller industrial)
  - Daily Metered (DM) (mainly large industrials and power station demand)

All in mcm/day.

### UKCS Monitor

- Shows actual UKCS performance to-date this winter with a view of expected maximum UKCS performance.
- Proven: Aggregate of maximum daily UKCS terminal flows to date.
- UKCS Estimate: Daily UKCS gas flows (Estimated Norwegian flows have been deducted).
- Max UKCS Forecast: Our 100% UKCS forecast (maximum capability).
- 90% UKCS: Gas levels which may be available under high demand or price conditions.
- "High Swing": Additional gas which may be available, if prices or demands are sufficiently high.

### Import Assessment

- Max to date: Maximum flows observed this winter
- Avg to date: Average flows observed this winter
- WCR: Winter Consultation Report view on anticipated supplies.
- Capacity: Maximum theoretical capacity

### UK Gas Prices vs IUK & Storage

- Left axis:
  - stacked bar chart showing pipeline import/export flows to and from UK and storage injection/ withdrawal.
  - Imports shows actual flows to and from UK's only bi-directional interconnector, the Belgian Interconnector IUK:
    - +ve implies imports to UK, -ve implies exports from UK
  - Actual storage includes LRS, MRS and SRS:
    - +ve implies injection from NTS (NTS demand), -ve implies withdrawal into NTS (NTS supply)
- Right axis:
  - UK gas prices showing actual on the day gas price (System Average Price (SAP)) in p/therm.