

Fast Reserve

Market Information for Tenders for January 2010

National Grid publishes this information, in order to inform potential participants for the Fast Reserve tender round for January 2010.

Fast Reserve Availability

Our indicative requirement for Fast Reserve in January 2010 is shown on a Settlement Period basis in Figure 1. This requirement covers weekdays, Saturdays, Sundays and Bank Holidays.

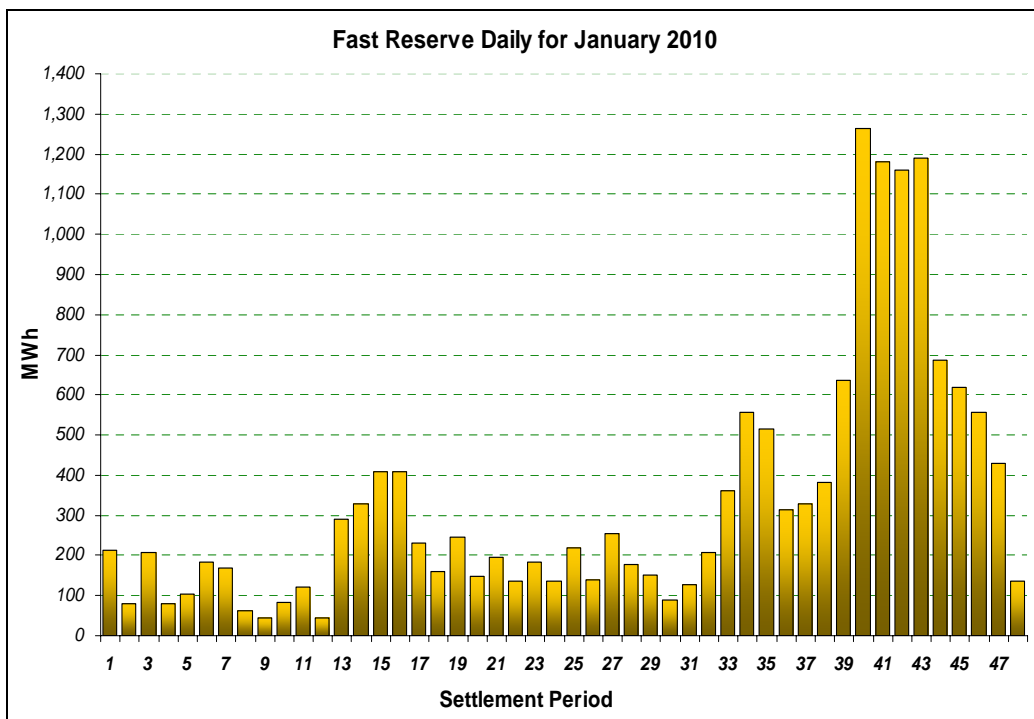


Figure 1

Figure 1 gives an indication of the times of day when Fast Reserve is most useful to National Grid. The actual amount of Fast Reserve "holding" varies from day to day, according to system conditions.

Fast Reserve Utilisation

The following BM information is based on the aggregate of Offers plus Bids accepted to provide Fast Reserve or an equivalent service. Note that the data for November 2009 contains both out-turn and forecast.

Figure 2 shows the daily utilisation of Fast Reserve in the BM and elsewhere during October 2009 and November 2009.

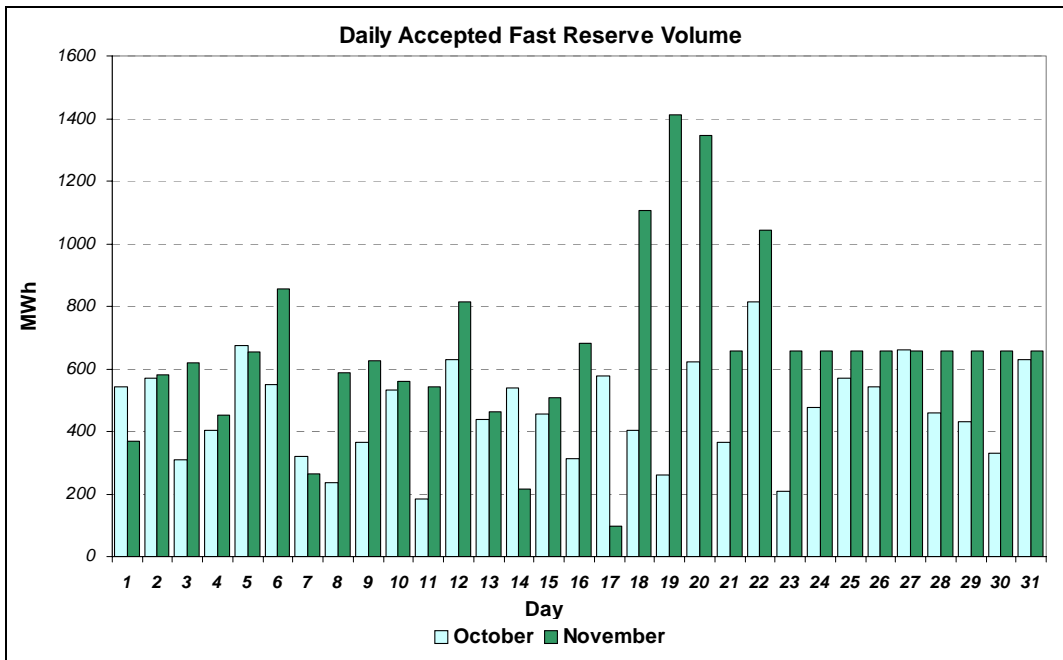


Figure 2

Figure 3 represents this data as total utilisation by Settlement Period across each month. This shows the daily profile of Fast Reserve utilisation.

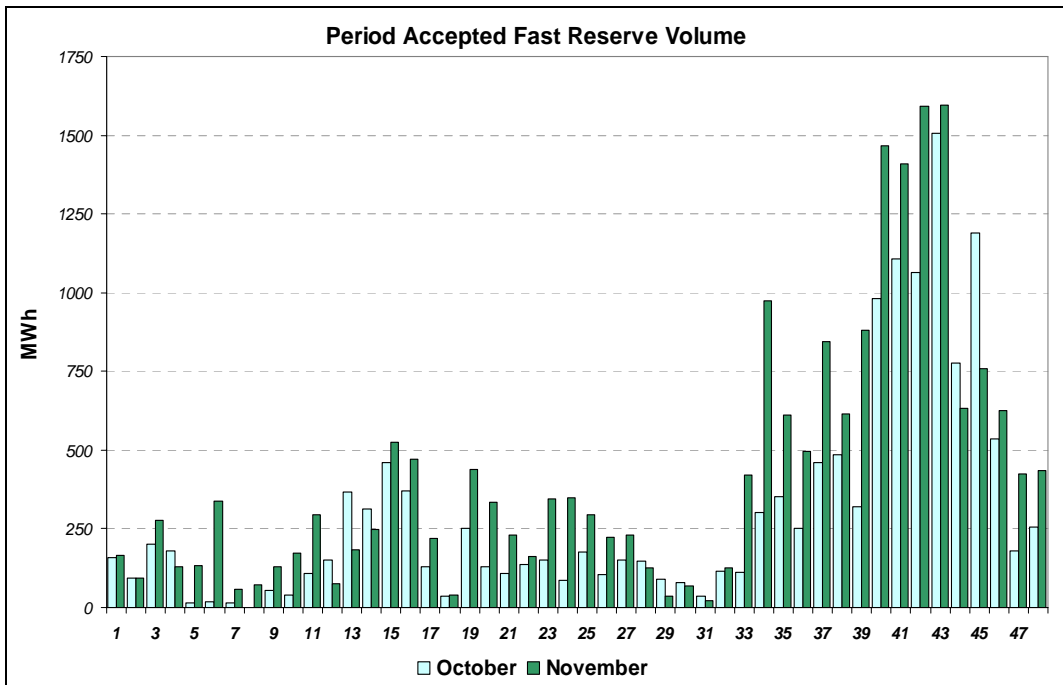


Figure 3

Figure 4 represents the same historical data, as an average utilisation price per Settlement Period for each month.

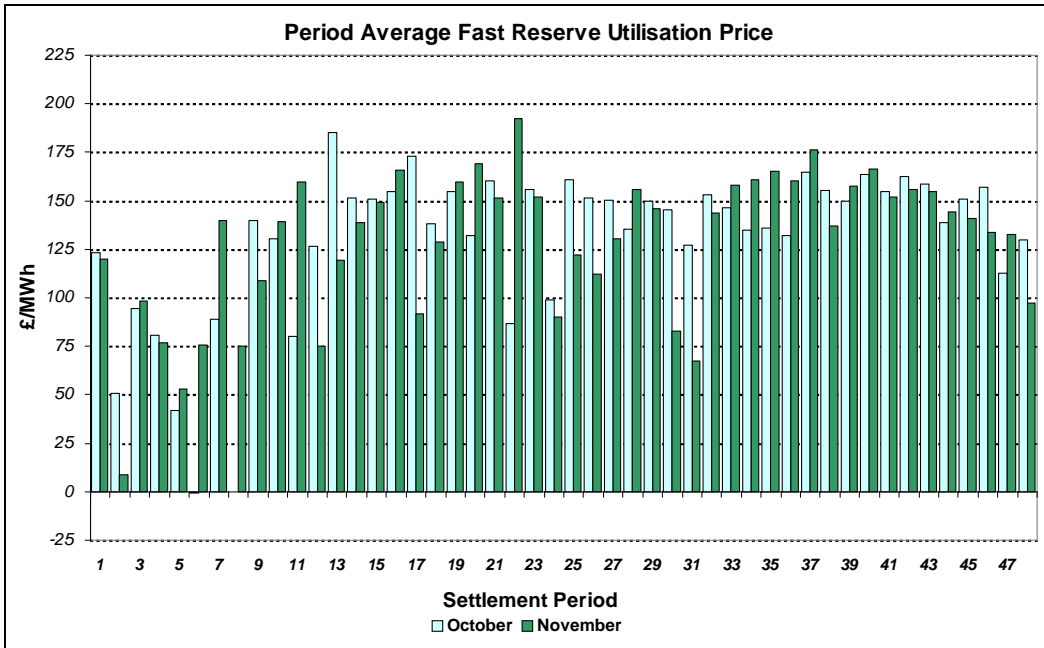


Figure 4

Finally, the same data is used in Figure 5, below, to show the profile of total Fast Reserve utilisation expenditure per Settlement Period for each month.

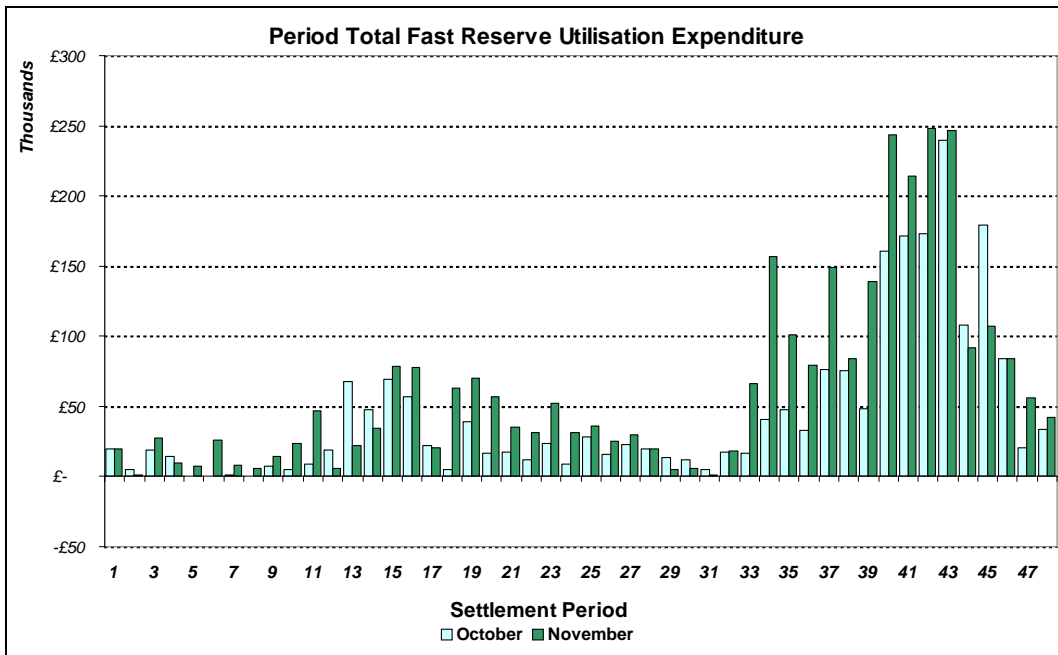


Figure 5

The total volumes of Fast Reserve utilisation of **14.41GWh** for October and **20.39GWh** for November, broken down into price bands are as follows:

October	Price band (£/MWh range)	Volume (MWh)	Average Price (£/MWh)	Cost (£m)
	2000 to 99999	0	n/a	n/a
OFFERS	1000 to 2000	0	n/a	n/a
	300 to 1000	160	343	0.05
	0 to 300	13,120	155	2.03
Total		13.28GWh		£2.08m
	0 to 300	-851	15	-0.01
BIDS	-300 to 0	-208	-176	0.04
	-1000 to -300	-73	-434	0.03
	-2000 to -1000	0	n/a	n/a
	-99999 to -2000	0	n/a	n/a
Total		-1.13GWh		£0.06m
Total		14.41GWh		£2.14m

November	Price band (£/MWh range)	Volume (MWh)	Average Price (£/MWh)	Cost (£m)
	2000 to 99999	0	n/a	n/a
OFFERS	1000 to 2000	0	n/a	n/a
	300 to 1000	36	341	0.01
	0 to 300	17,405	161	2.80
Total		17.44GWh		£2.81m
	0 to 300	-2,290	13	-0.03
BIDS	-300 to 0	-439	-171	0.08
	-1000 to -300	-218	-456	0.10
	-2000 to -1000	0	n/a	n/a
	-99999 to -2000	0	n/a	n/a
Total		-2.95GWh		£0.14m
Total		20.39GWh		£2.95m

For the month of January 2010, tenders from eligible Service Providers for firm Fast Reserve should be submitted to National Grid by **Wednesday 1st December 2009** (business day 1) for multi-month tenders, or **Friday 3rd December 2009** (business day 3) for single month tenders. National Grid will notify Service Providers of the outcome of the tender assessment by Tuesday 14th December 2009 (business day 10).

Tenders should be sent for the attention of:

Bea Ennim
Network Operations
National Grid Electricity Transmission plc
National Grid House
Warwick Technology Park
Gallows Hill
Warwick
CV34 6DA

Tenders can be sent by fax to Bea Ennim on 01926 656612.