

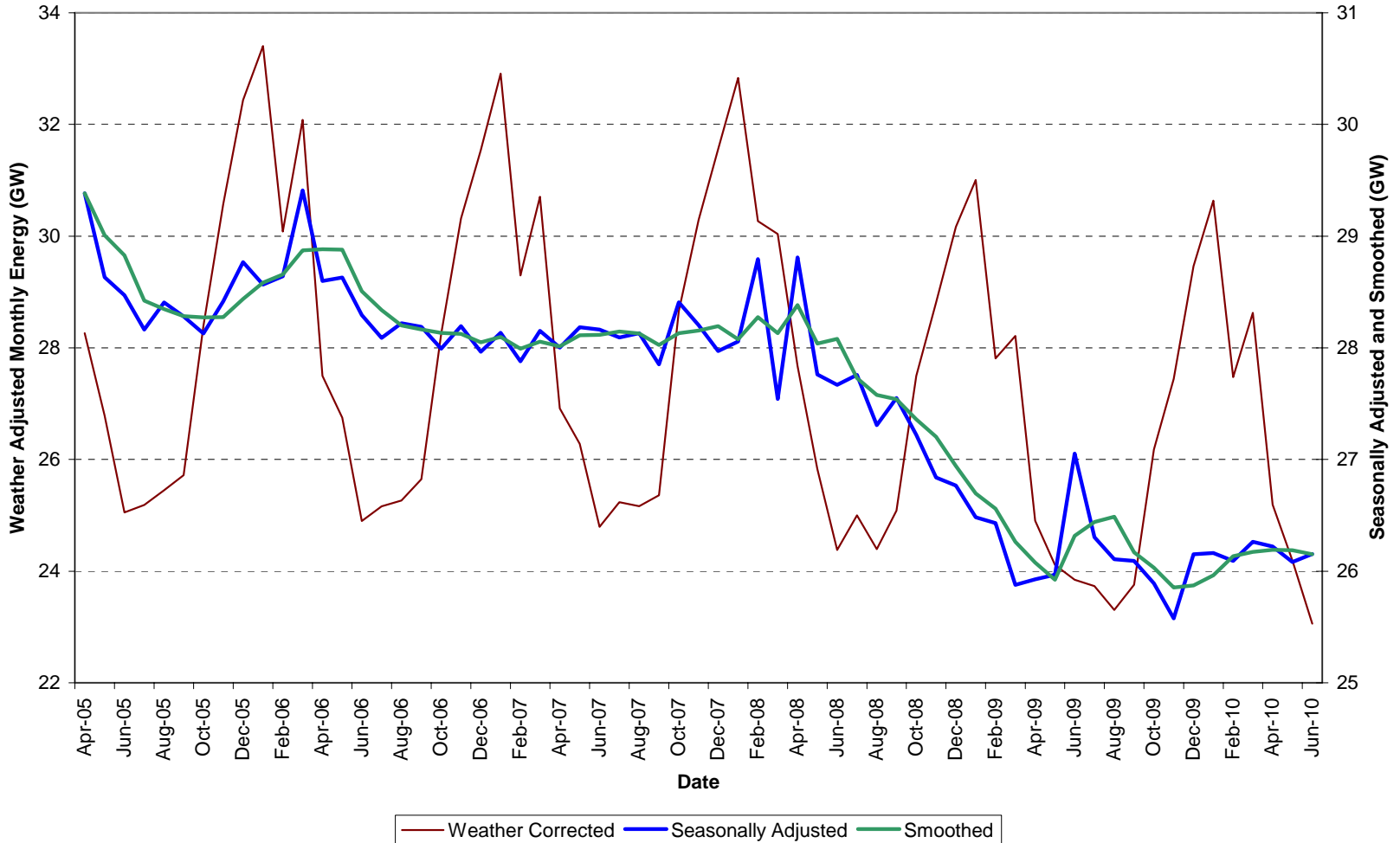


# Preliminary Winter Outlook 2010/11

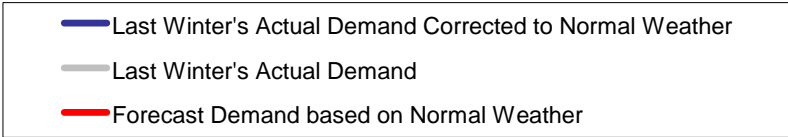
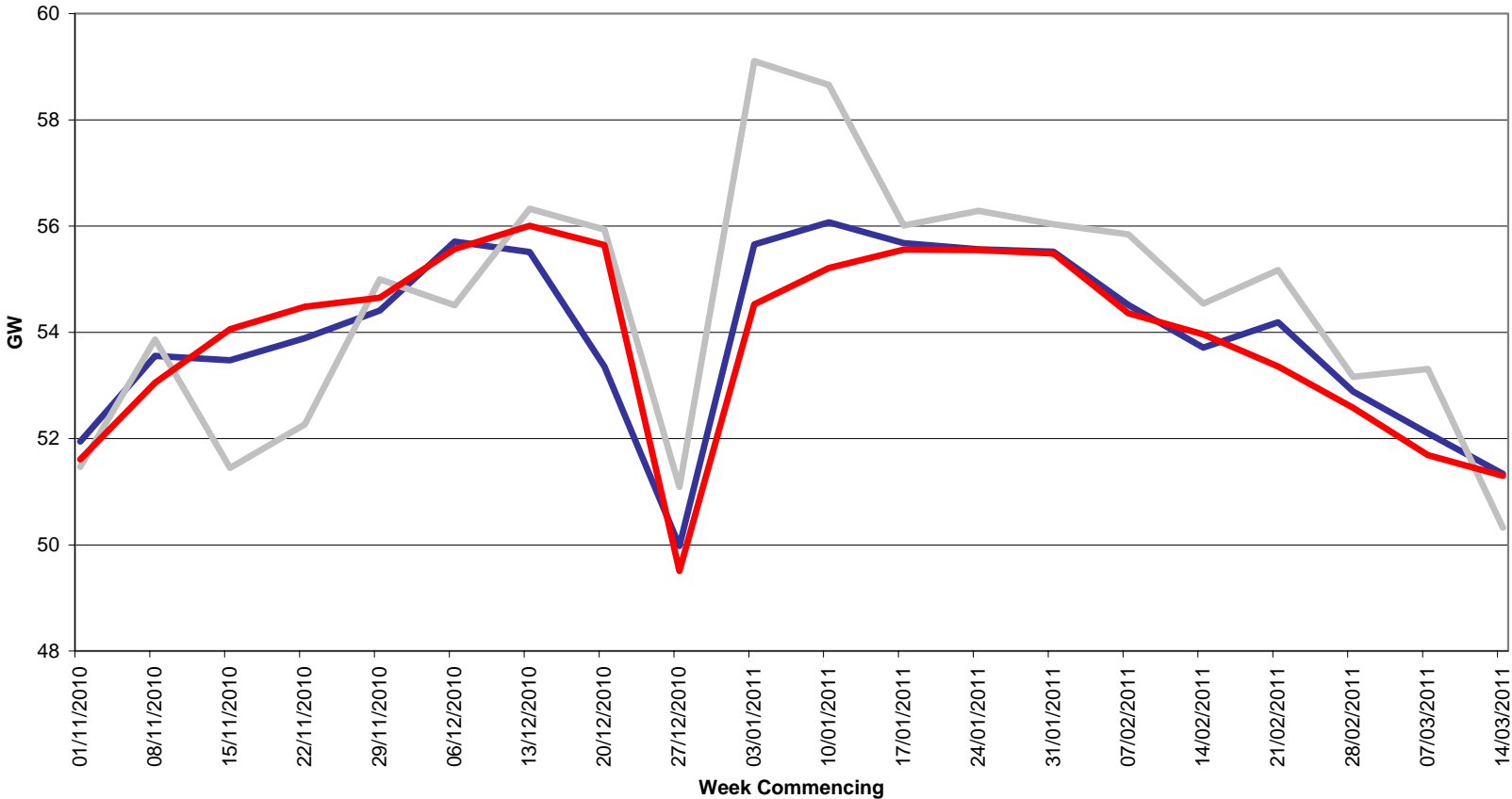


Matthew Magill - Energy Requirements Team

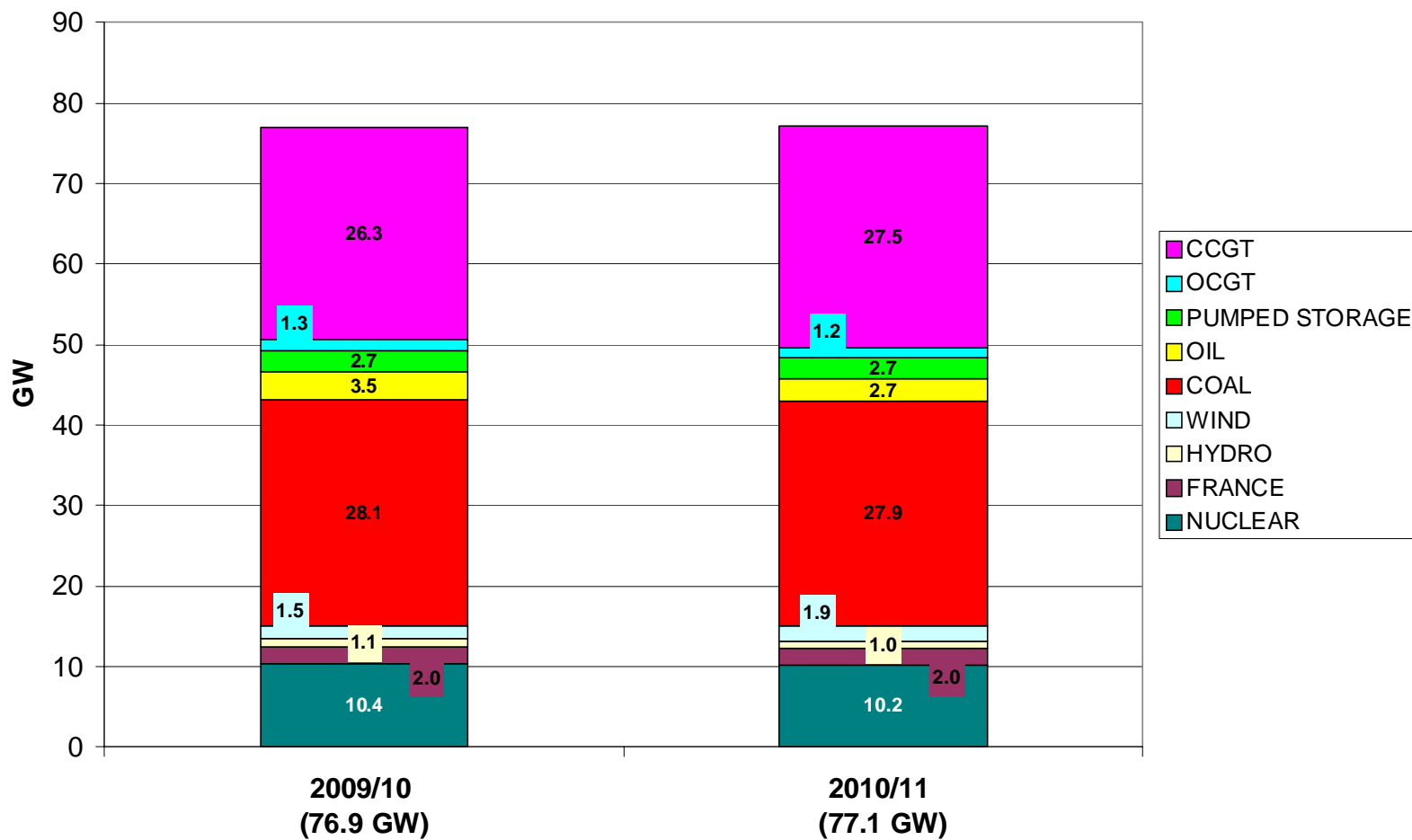
# Demand Forecast Uncertainty has Increased



# Winter 2010/11 Forecast Demand



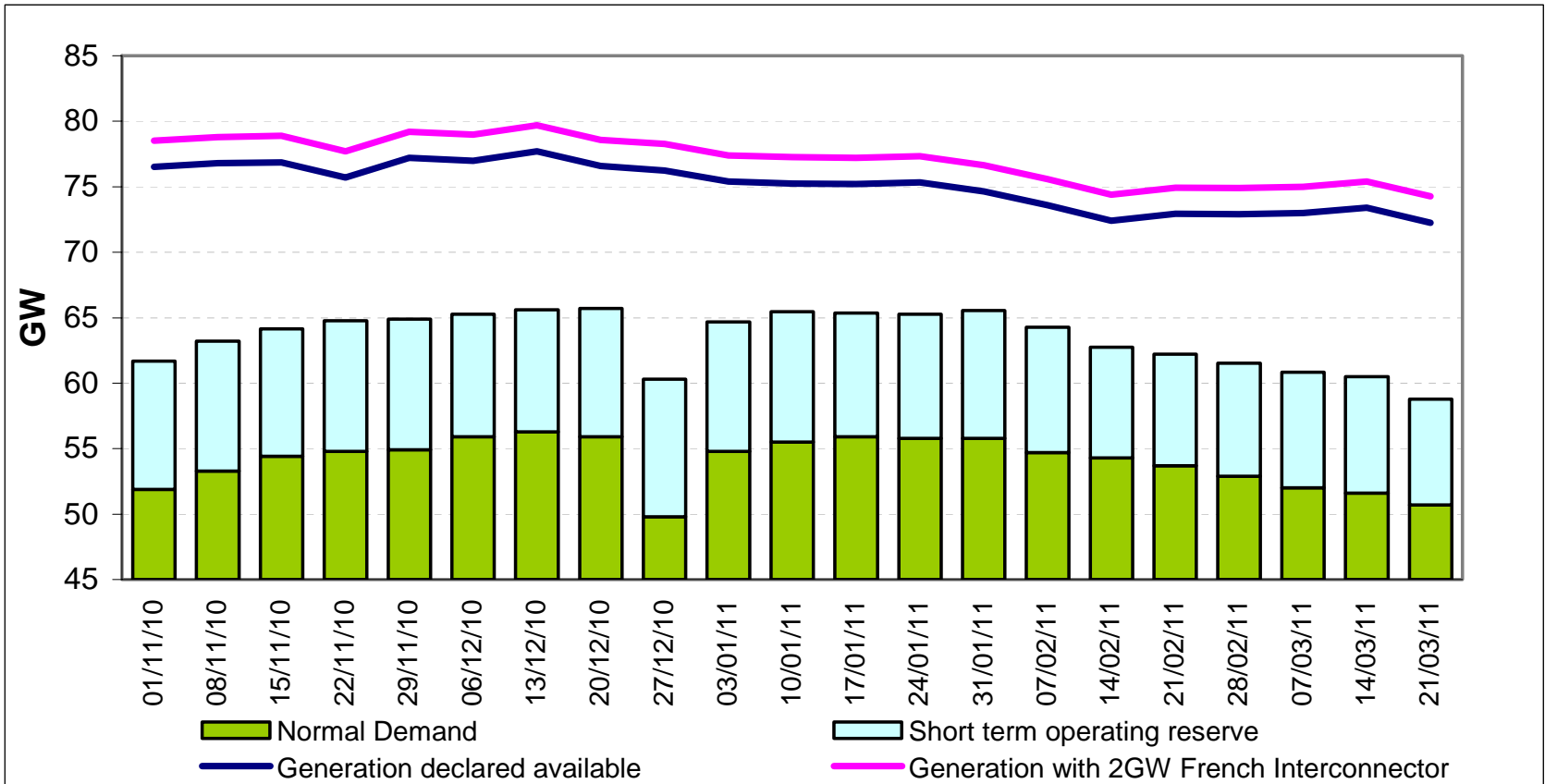
# Generation Mix Winter 2009/10 and 2010/11



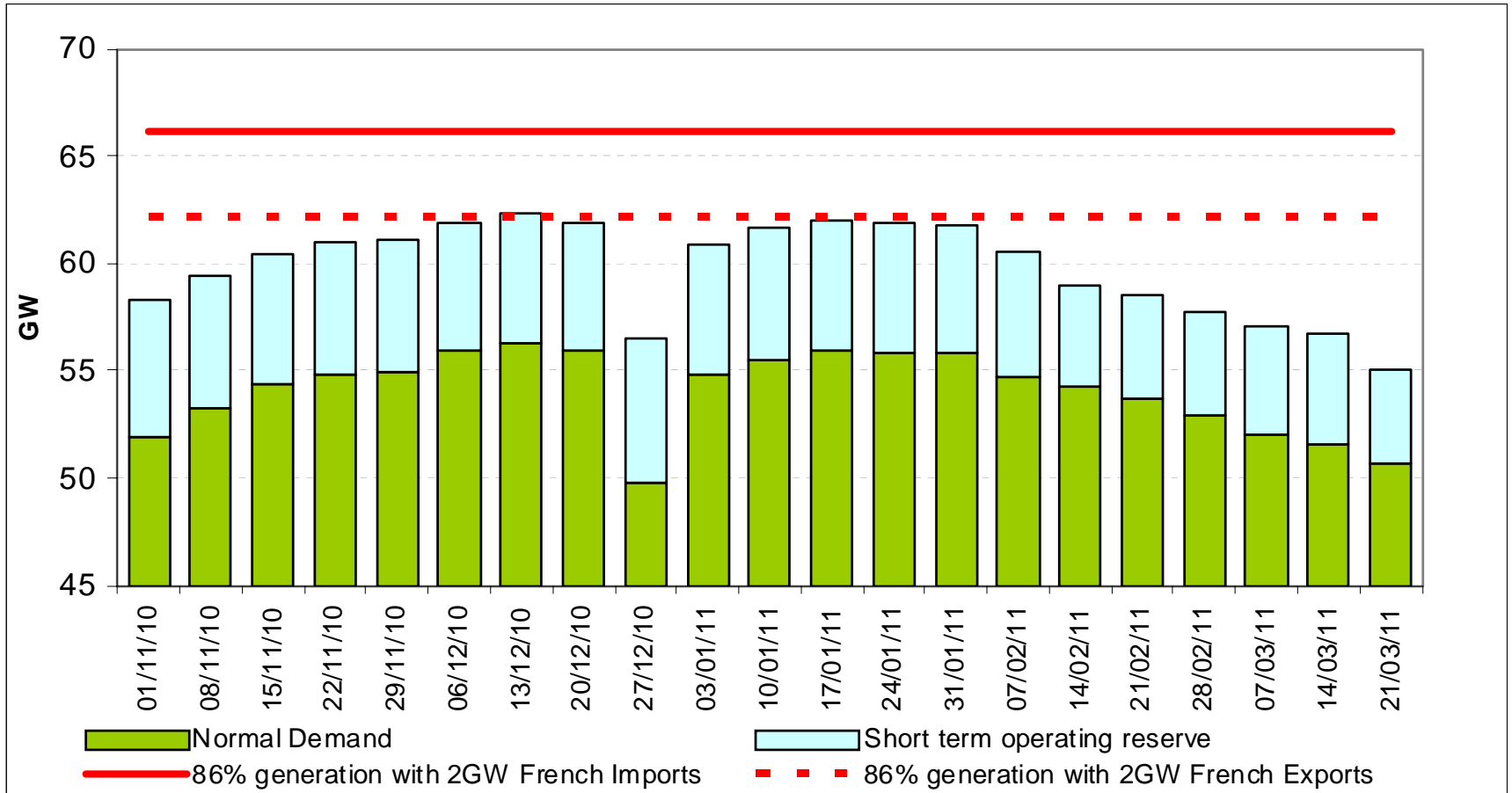
# Assumed Availability

Power Station Type	Full Metered Capacity (GW)	Assumed Availability	Assumed Availability (GW)
<b>Nuclear</b>	<b>10.2</b>	<b>75%</b>	<b>7.6</b>
<b>French Interconnector</b>	<b>2.0</b>	<b>100%</b>	<b>2.0</b>
<b>Hydro generation</b>	<b>1.0</b>	<b>60%</b>	<b>0.6</b>
<b>Wind generation</b>	<b>1.9</b>	<b>10%</b>	<b>0.2</b>
<b>Coal</b>	<b>27.9</b>	<b>90%</b>	<b>25.1</b>
<b>Oil</b>	<b>2.7</b>	<b>80%</b>	<b>2.2</b>
<b>Pumped storage</b>	<b>2.7</b>	<b>100%</b>	<b>2.7</b>
<b>OCGT</b>	<b>1.2</b>	<b>90%</b>	<b>1.1</b>
<b>CCGT</b>	<b>27.5</b>	<b>90%</b>	<b>24.7</b>
Total	77.1		66.2
Overall availability		86%	

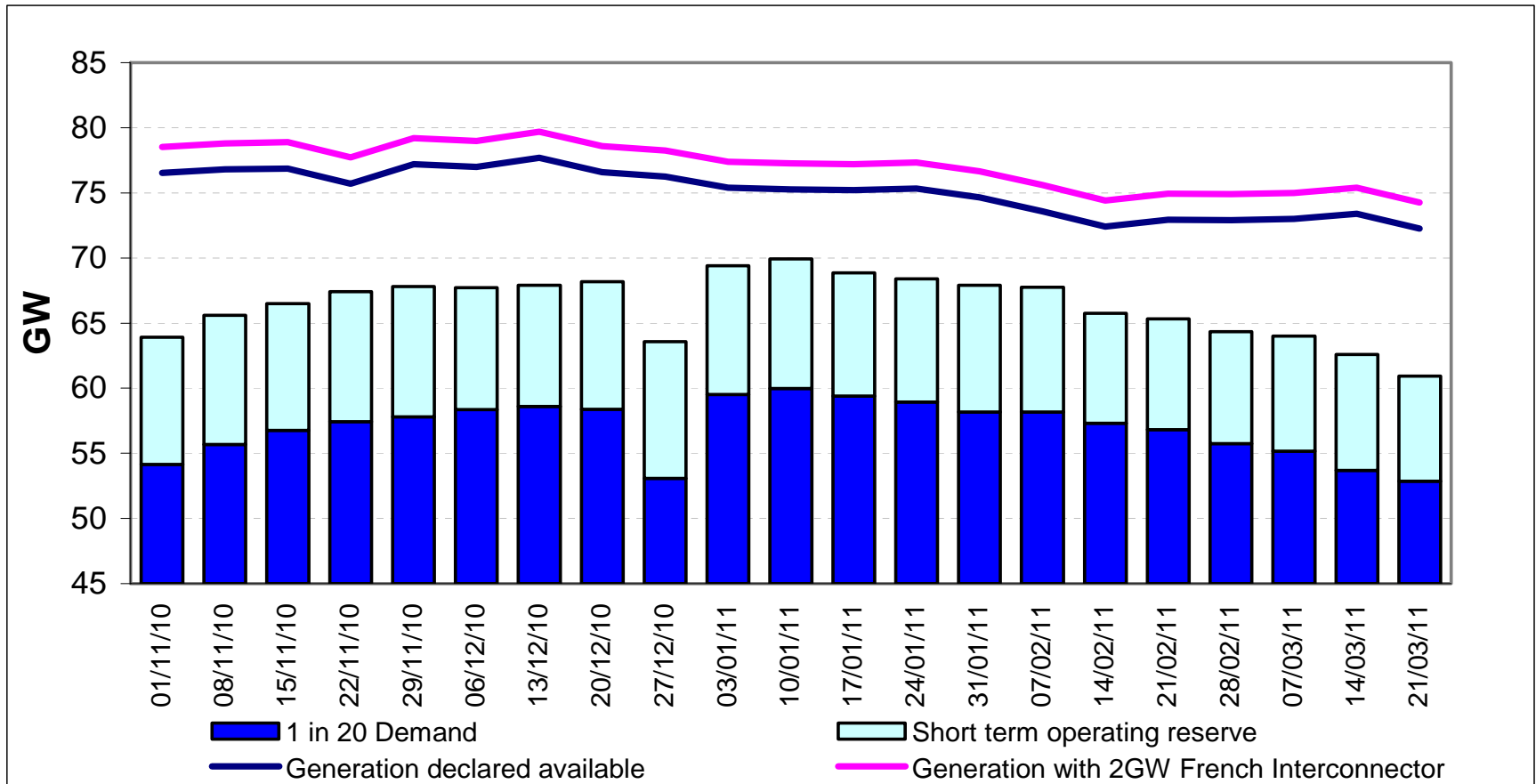
# Normal Demand and Notified Generation Availability



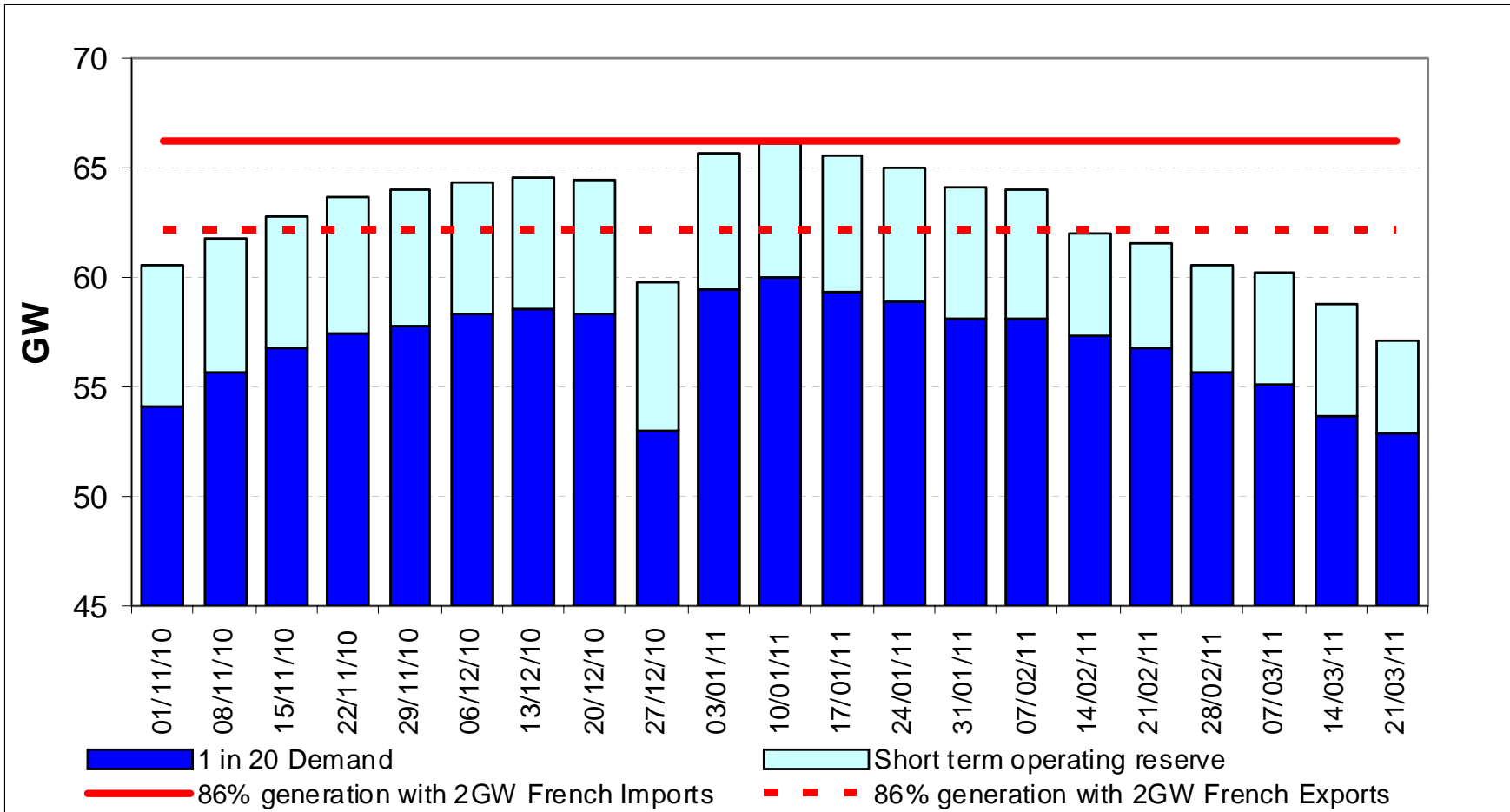
# Normal Demand and Assumed Generation Availability



# 1 in 20 Demand and Notified Generation Availability



# 1 in 20 Demand and Assumed Generation Availability



# Looking ahead to Winter 2010/11 - Summary

---

- **The overall electricity demand/supply balance for winter to come looks comfortable at this stage**
  - The potential we saw for last winter (pre recession) for a larger than usual number of system warnings being issued if we had 1 in 20 cold weather has gone away
- **Electricity demands are expected to be much lower (2 GW) than a pre-recession winter**
- **There is significant upside in generation availability with a number of CCGTs expected to start commissioning**
- **Information on demands, generation surpluses and other operational information is regularly updated (outside of the outlook report cycle) and can be found on [www.bmreports.com](http://www.bmreports.com)**

## Winter outlook 2010/11 timeline

---

- **Preliminary report published – 1st July 2010**
  - Invites views on key issues and assumptions made for 2010/11;
  - <http://www.nationalgrid.com/uk/Electricity/SYS/outlook/>
  
- **Consultation responses – 23rd August 2010;**
  - Responses should be emailed to [energy.operations@uk.ngrid.com](mailto:energy.operations@uk.ngrid.com)
  
- **Final winter report published - w/c 4th October 2010**

*Question?*

**E-mail – [energy.operations@uk.ngrid.com](mailto:energy.operations@uk.ngrid.com)**