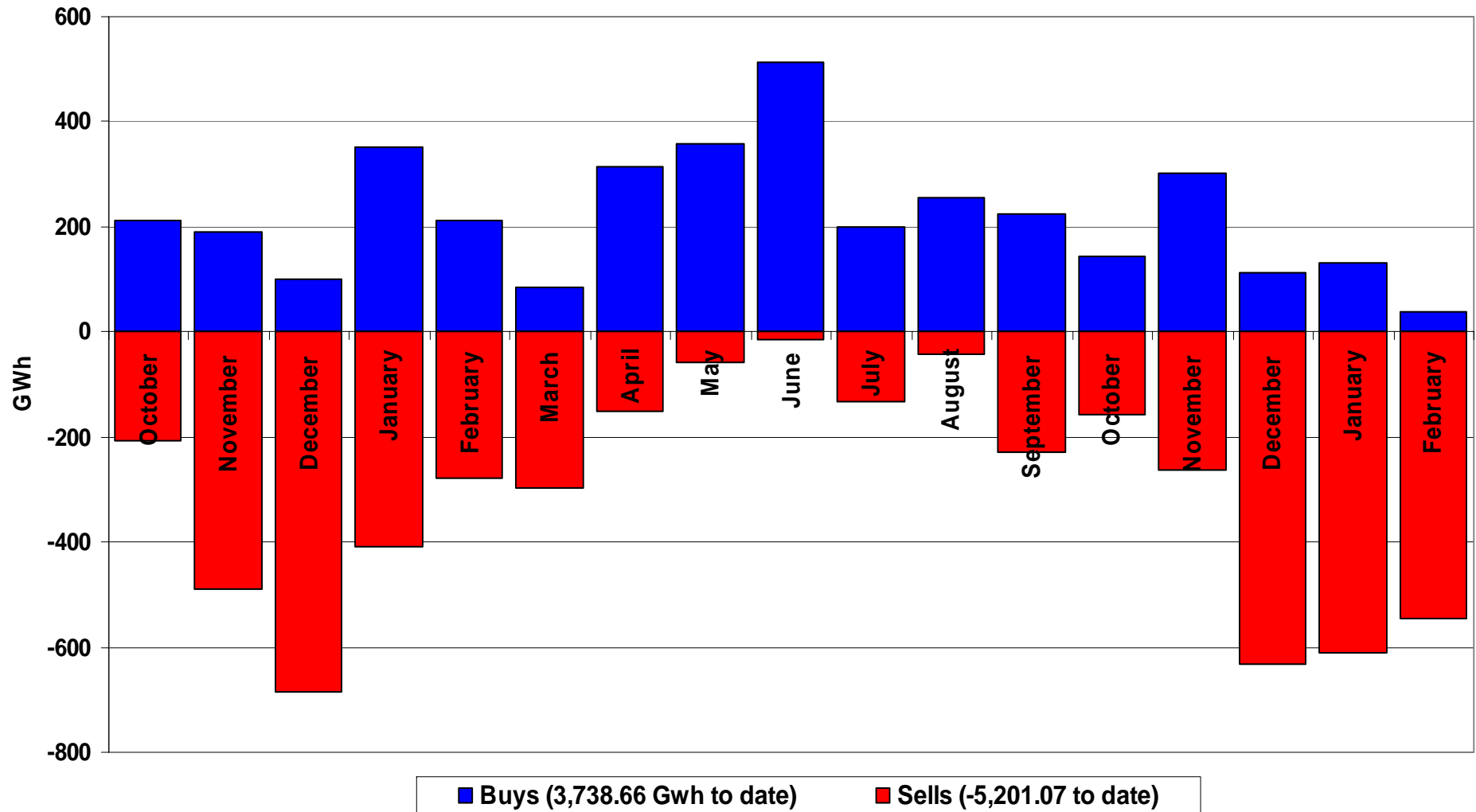


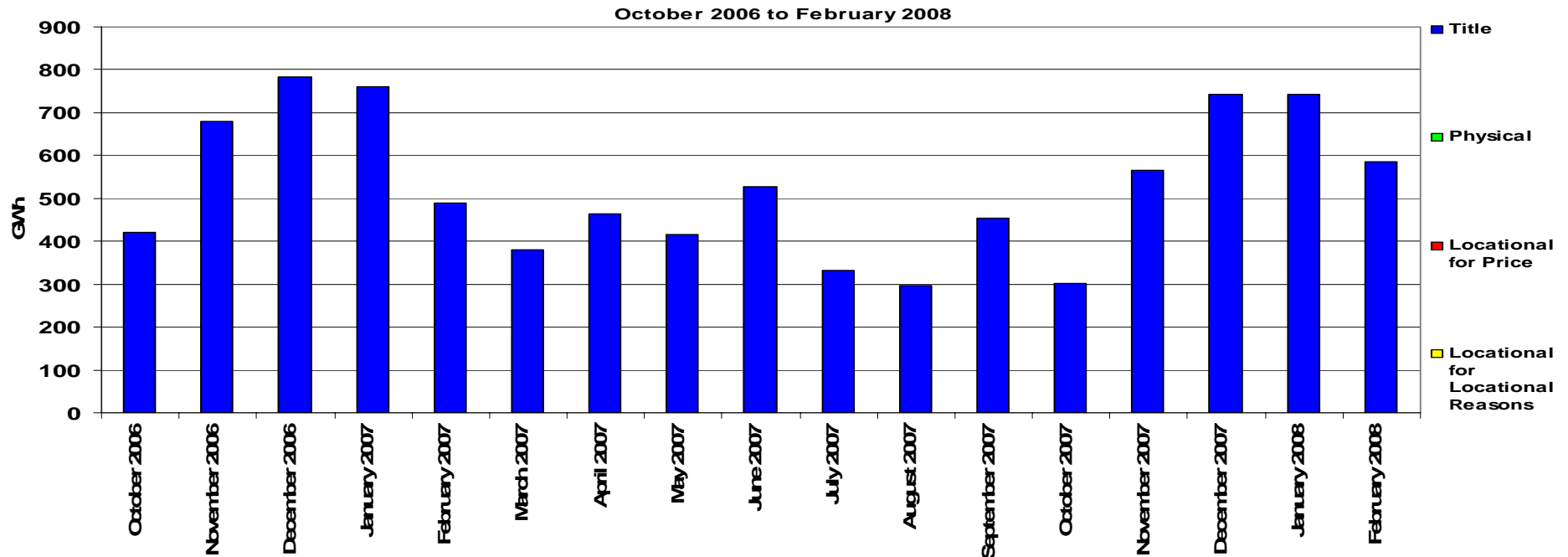
Performance of the Energy Regime

February 2008

Transporter Energy Traded Per Month



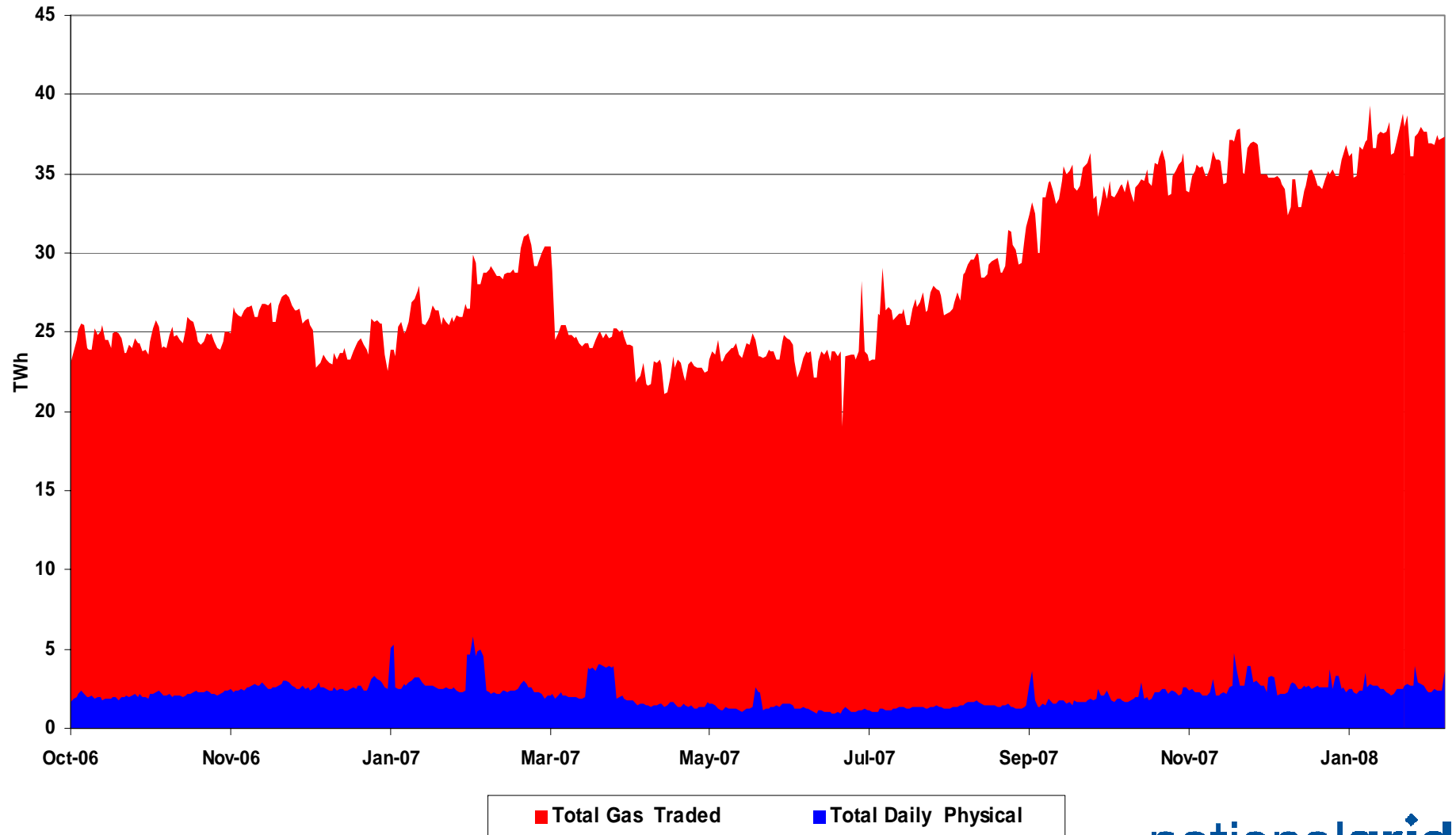
Monthly Energy Traded by Transporter on the OCM



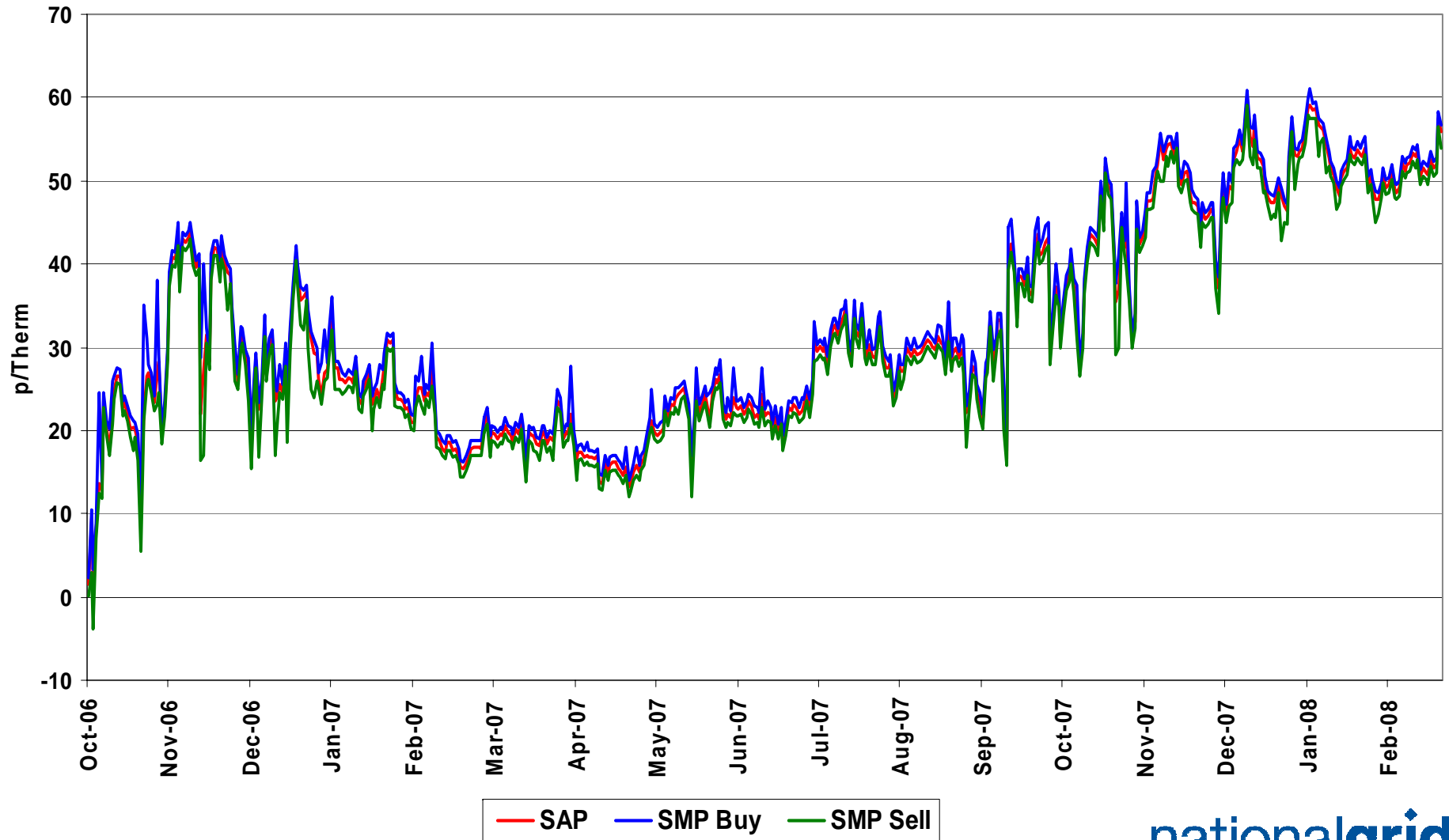
March all Markets = 381.08 Gwh
 April all Markets = 463.23 Gwh
 May all Markets = 414.52 Gwh
 June all Markets = 526.71 Gwh
 July all Markets = 332.66 Gwh
 August all Markets = 296.56 Gwh

September all Markets = 454.58 Gwh
 October all Markets = 302.27 Gwh
 November all Markets = 564.84 Gwh
 December all Markets = 742.88 Gwh
 January all Markets = 742.09 Gwh
 February all Markets = 585.85 Gwh

NBP Gas Trades

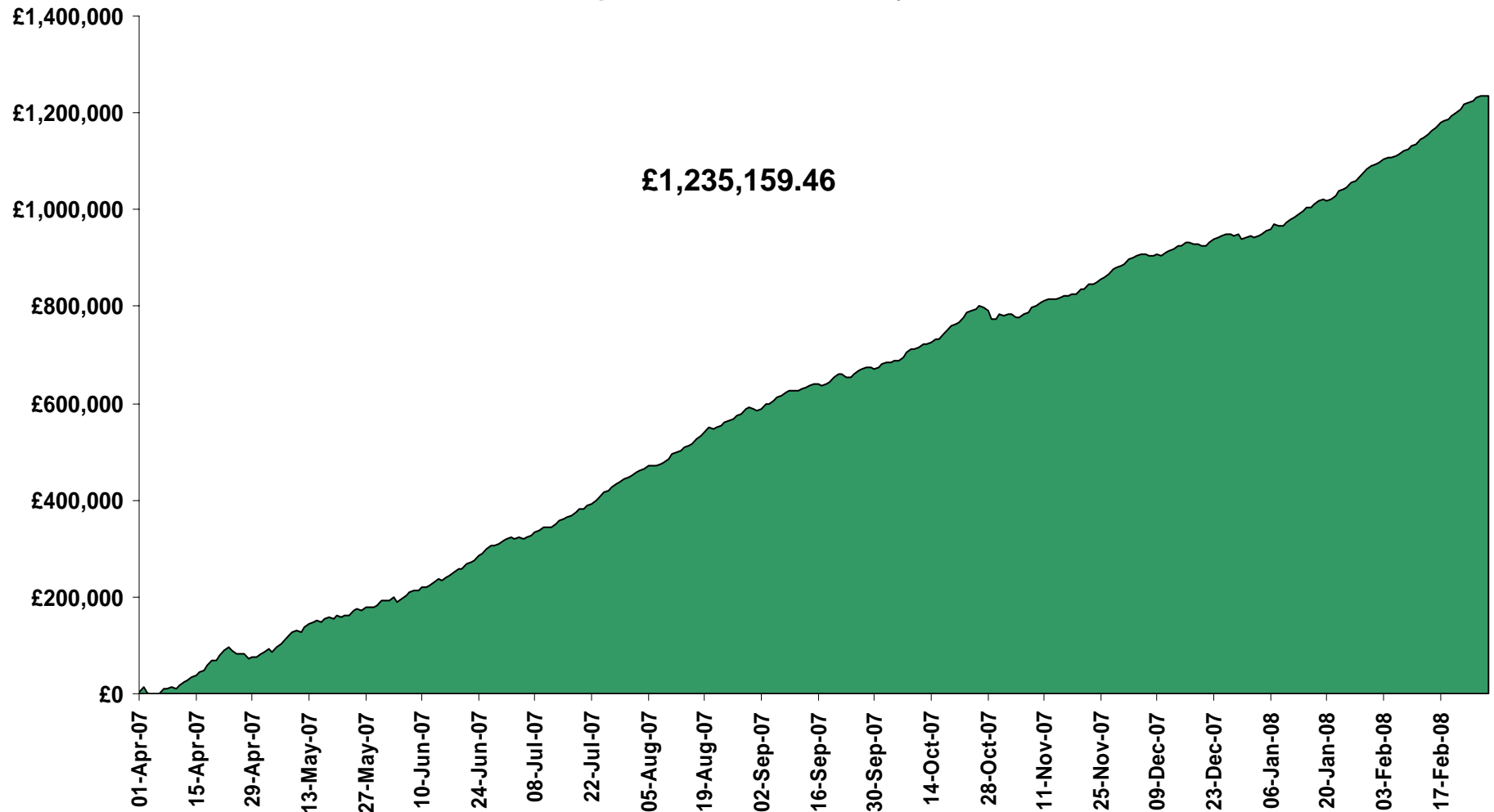


Gas Prices



Energy Balancing Incentive

1st April 2007 to 28th February 2008



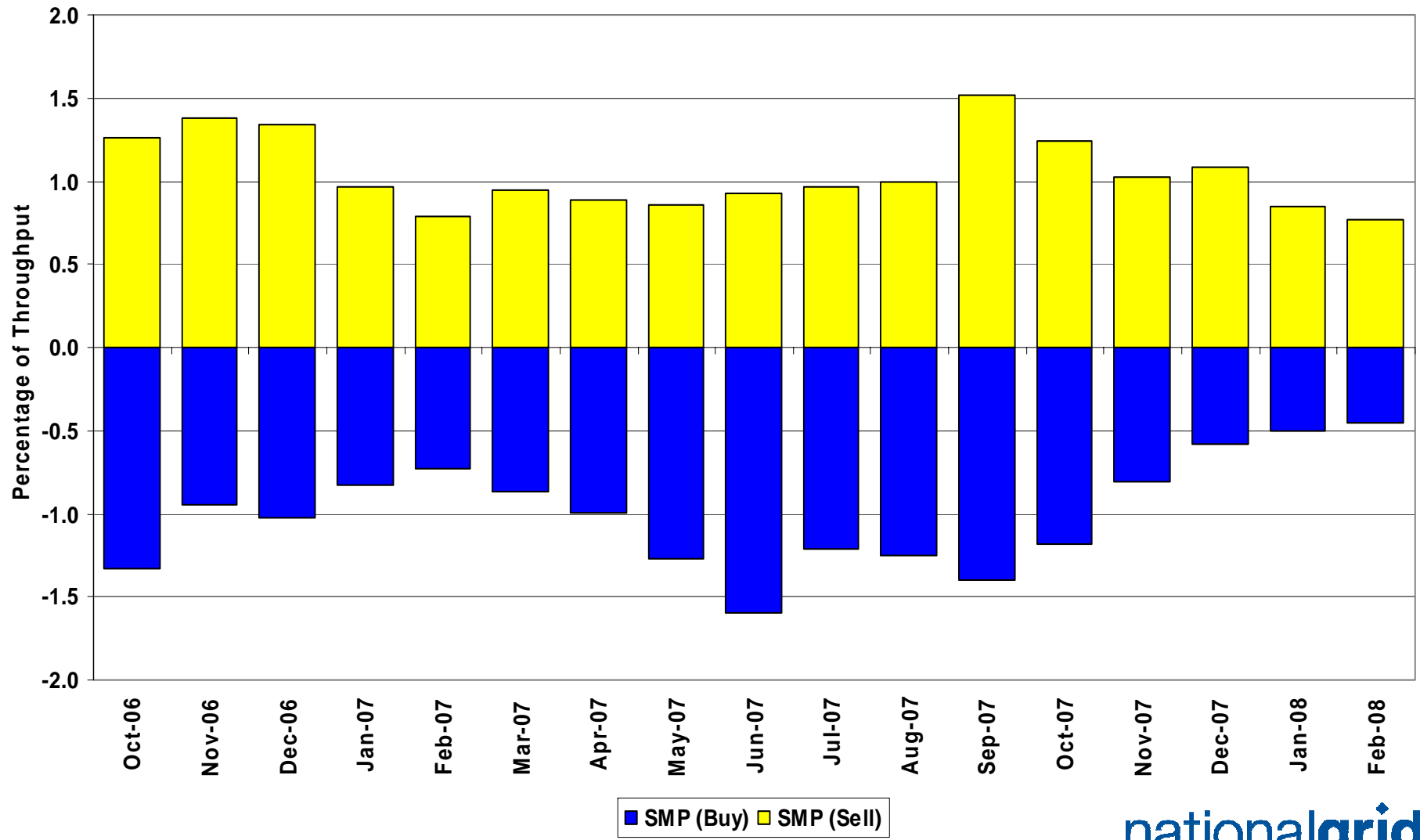
Days of Default SMP Prices

1st October 2007 to 28th February 2008

Percentage of Days of Default SMP

SMP Buy	SMP Sell	Both
78.9%	67.8%	53.9%

System Level Imbalance as a % of Throughput



Transporter Actions on OCM Mechanism

Revenues / Costs

1st October 2007 to 28th February 2008

	Quantity (TWh)	Average (p/kWh)	Price (Therms)	Cost (£m)
System Buy	0.728	1.6504	48.35	£12.01
System Sell	-2.210	1.6755	49.09	-£37.03
Net Position	-1.482 Sell			-£25.02

Imbalance Gas

Revenues / Costs

1st October 2007 to 28th February 2008

System	Quantity (TWh)	Average (p/kWh)	Price (p/therm)	Cost £m
System Buy	5.47	1.5903	46.59	£86.95
System Sell	-3.77	1.6605	48.65	-£62.65
Net Position	1.70 Buy			£24.30

Scheduling Revenues

1st October 2007 to 28th February 2008

	Cost £m
Input	-£2.92
Output	-£1.05
<hr/>	
Total	-£3.97

Balancing Costs

1st October 2007 to 28th February 2008

	£m
OCM/Flex Gas	-25.02
Imbalance Gas	24.30
Scheduling	-3.97
<hr/>	
Balancing Cost	-4.69

(-0.0008p/kWh or -0.0247p/Therm of Throughput)

Neutrality : Gas Year Comparison

(for October to February)

	Gas Year 2006/07	Gas Year 2007/08
Neutrality by Throughput (p/therm)	-0.1297	-0.0247