

Operational and SO Cost Update

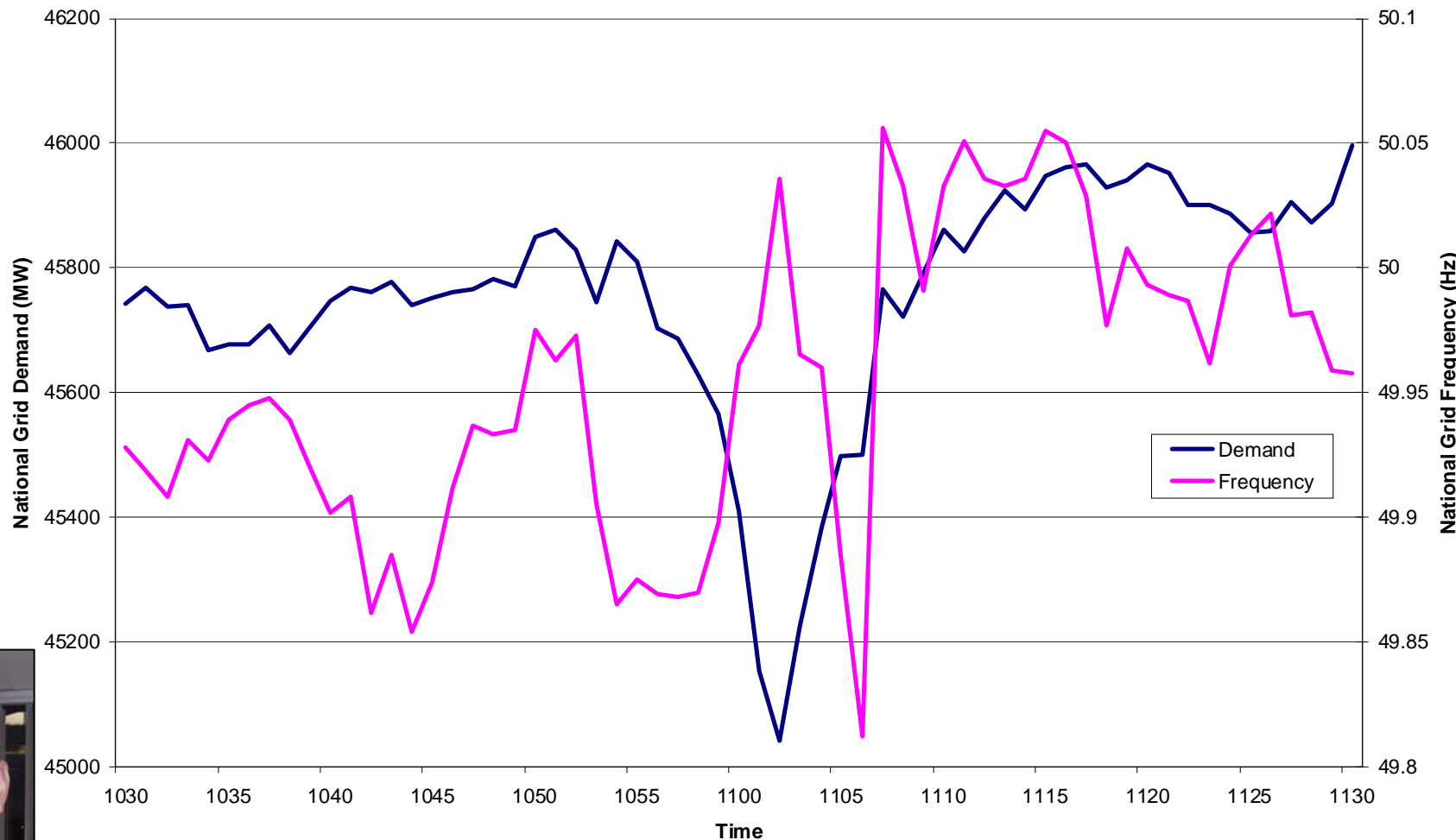
Stuart Bailey, Operational Forum, 2nd December 2009



nationalgrid

The power of action.™

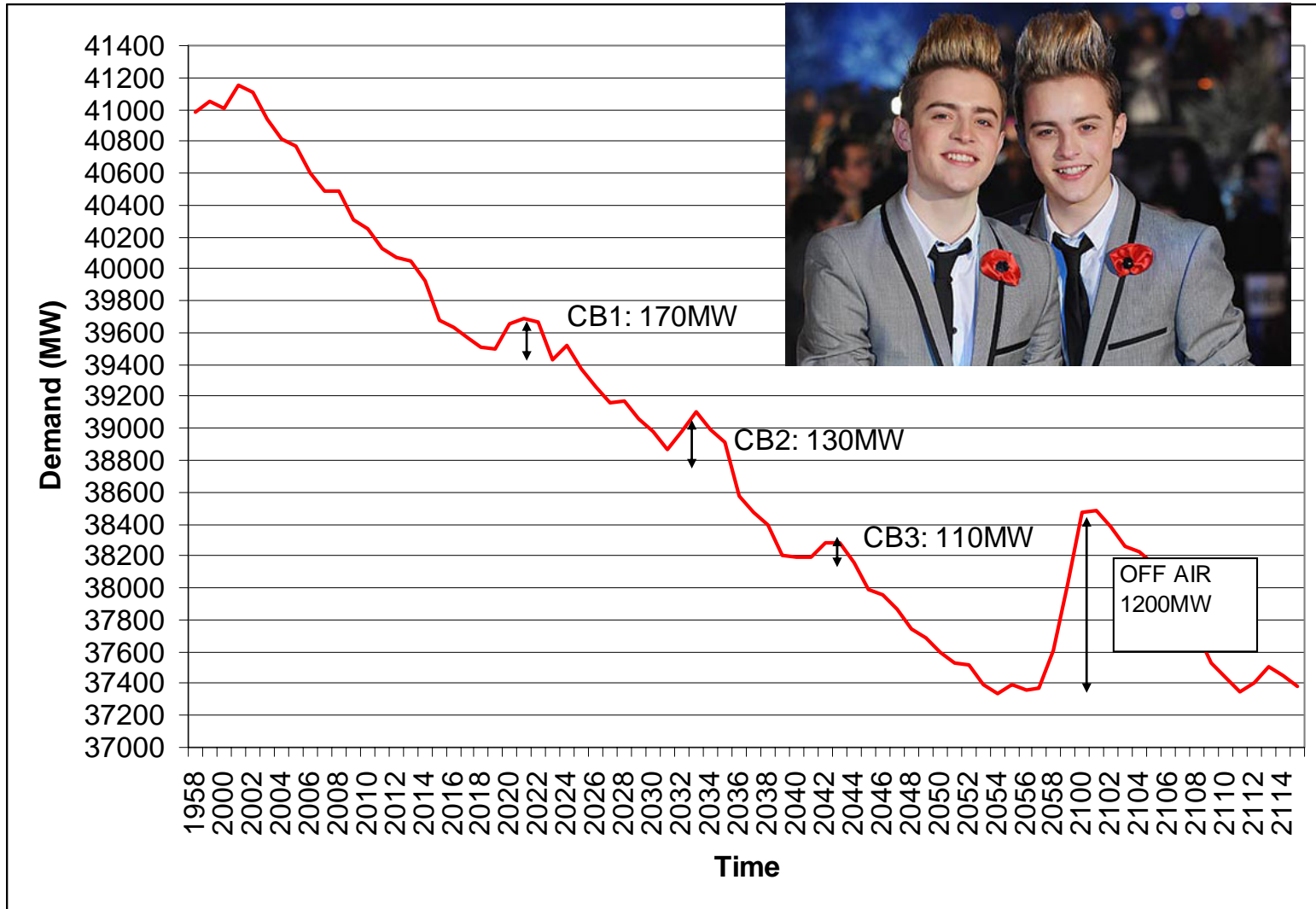
The effect of the 2 minute silence on 11/11/2009 at 11:00HRS



Stuart Bailey

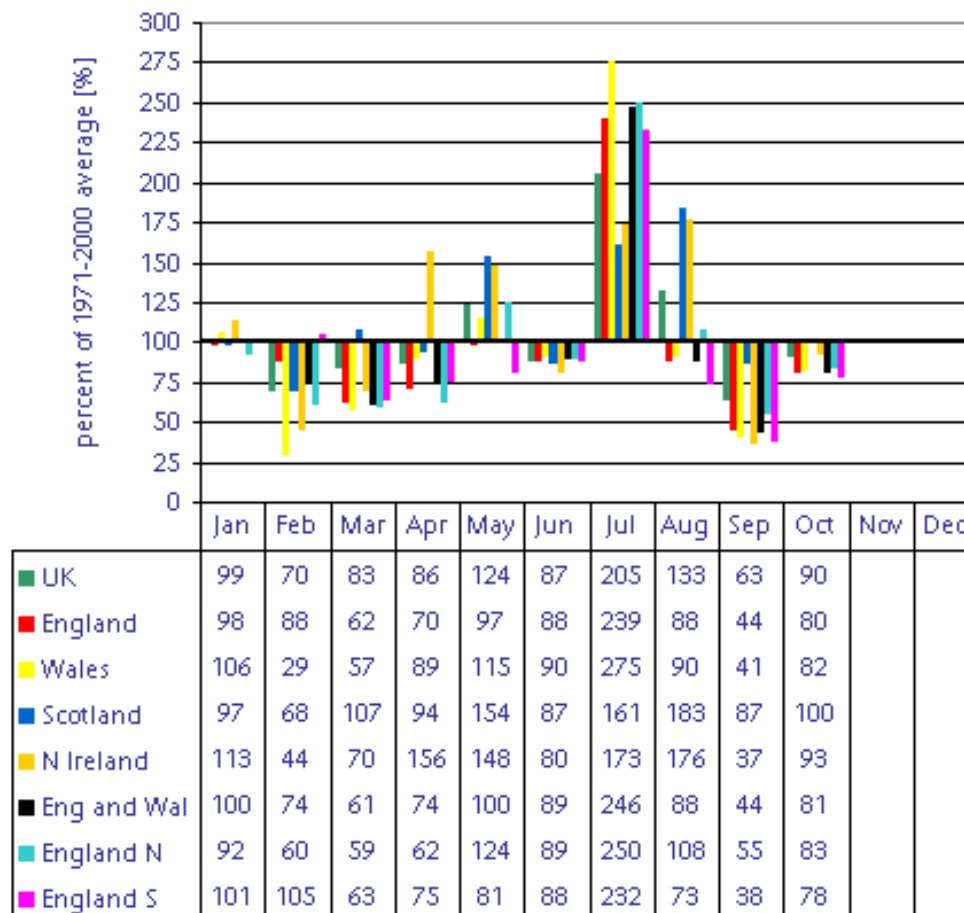
Interim Operational Forum December 2009

X-Factor Results 22/11/2009



Rain Fall in 2009

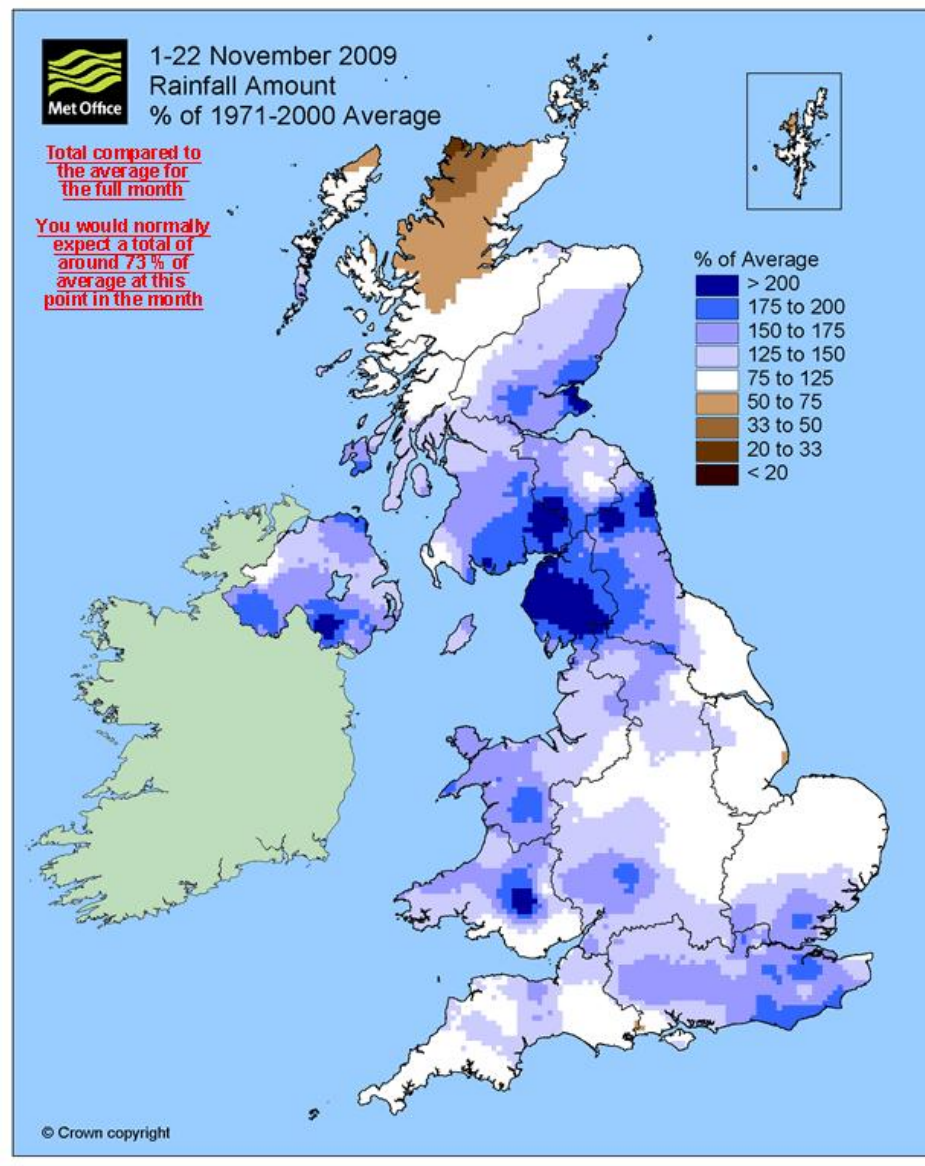
Rainfall (1971-2000) anomalies for 2009



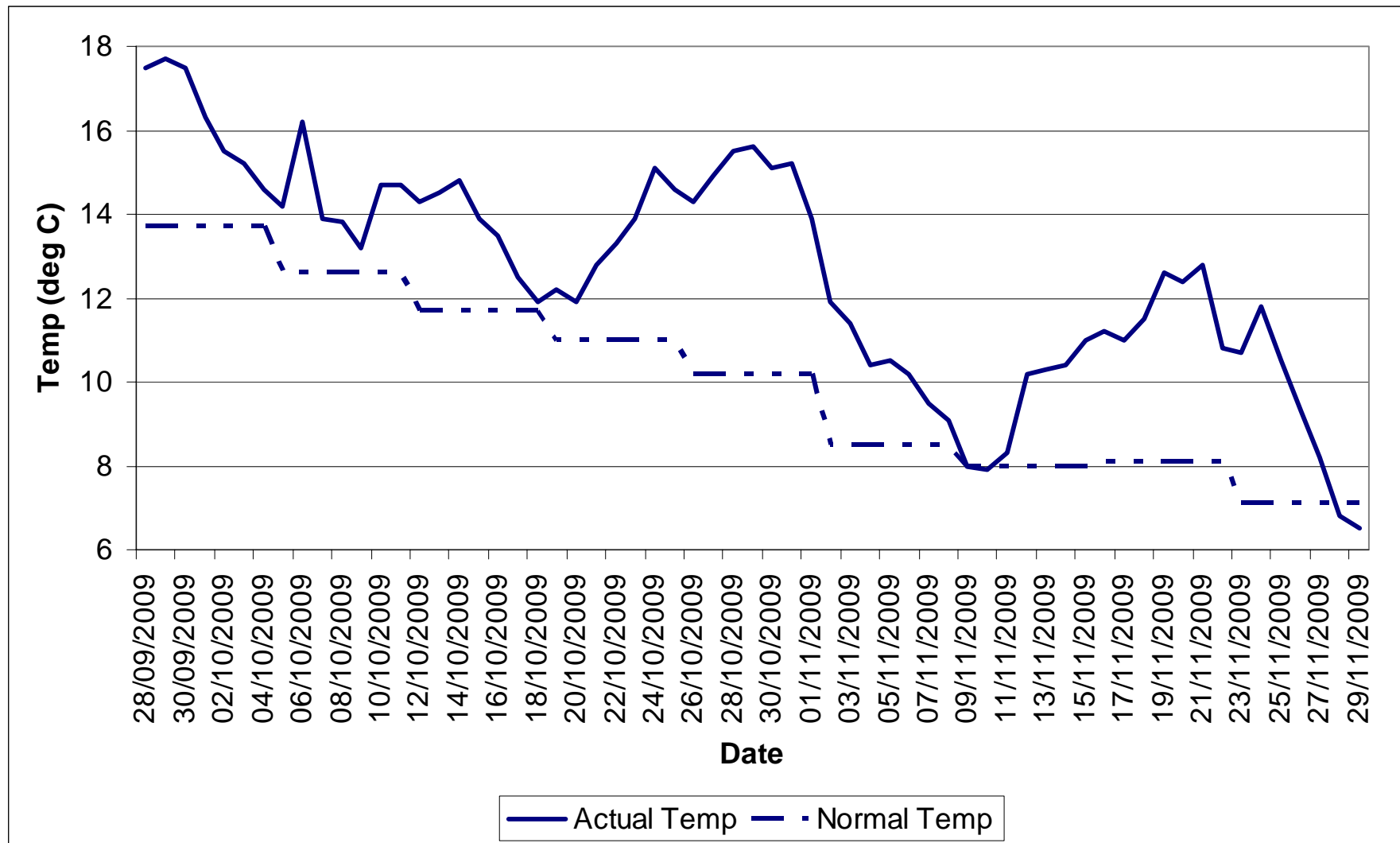
Stuart Bailey

Interim Operational Forum December 2009

November Rainfall

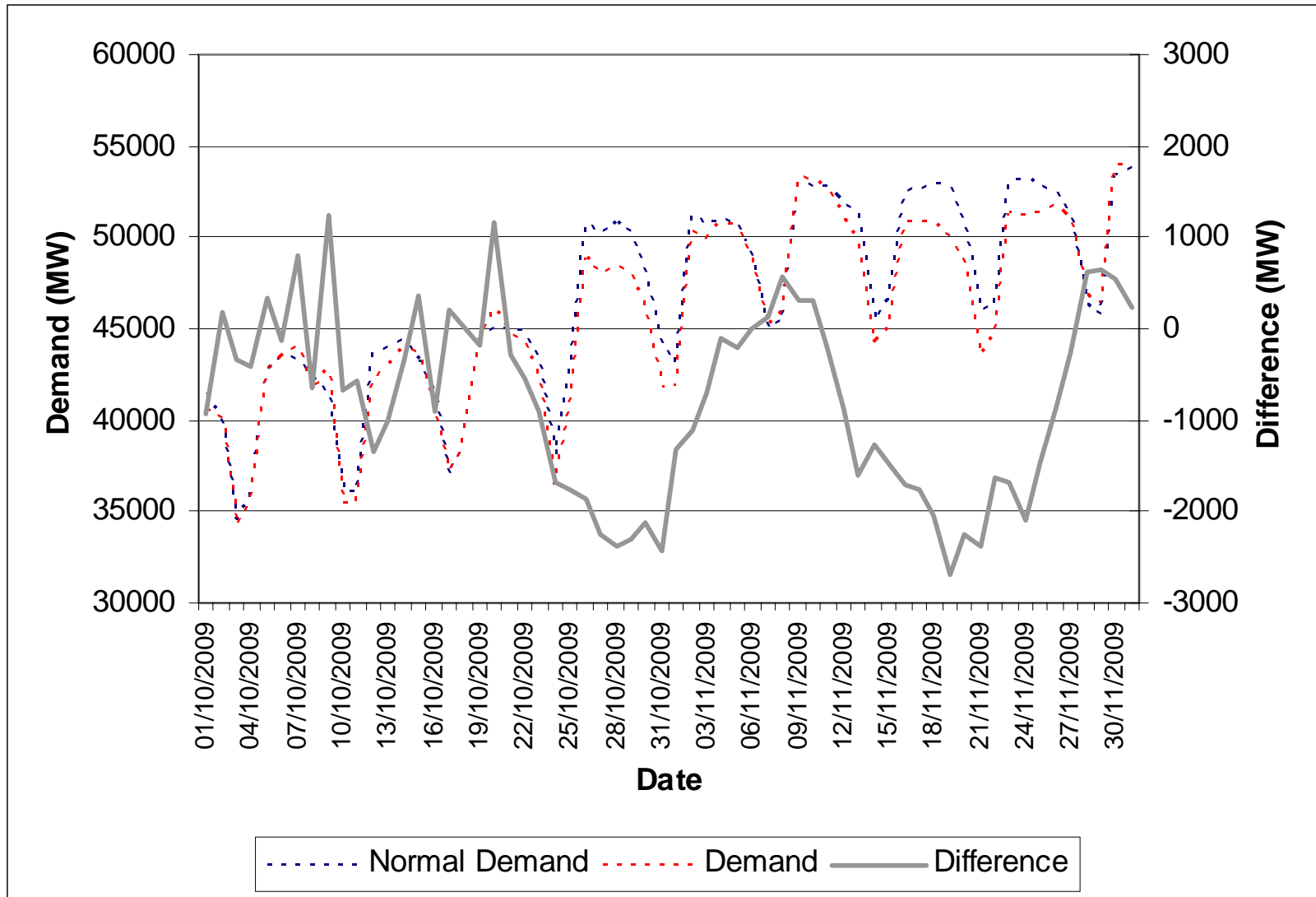


Normal Vs Actual Temperatures 17:00hrs October 2009 onwards

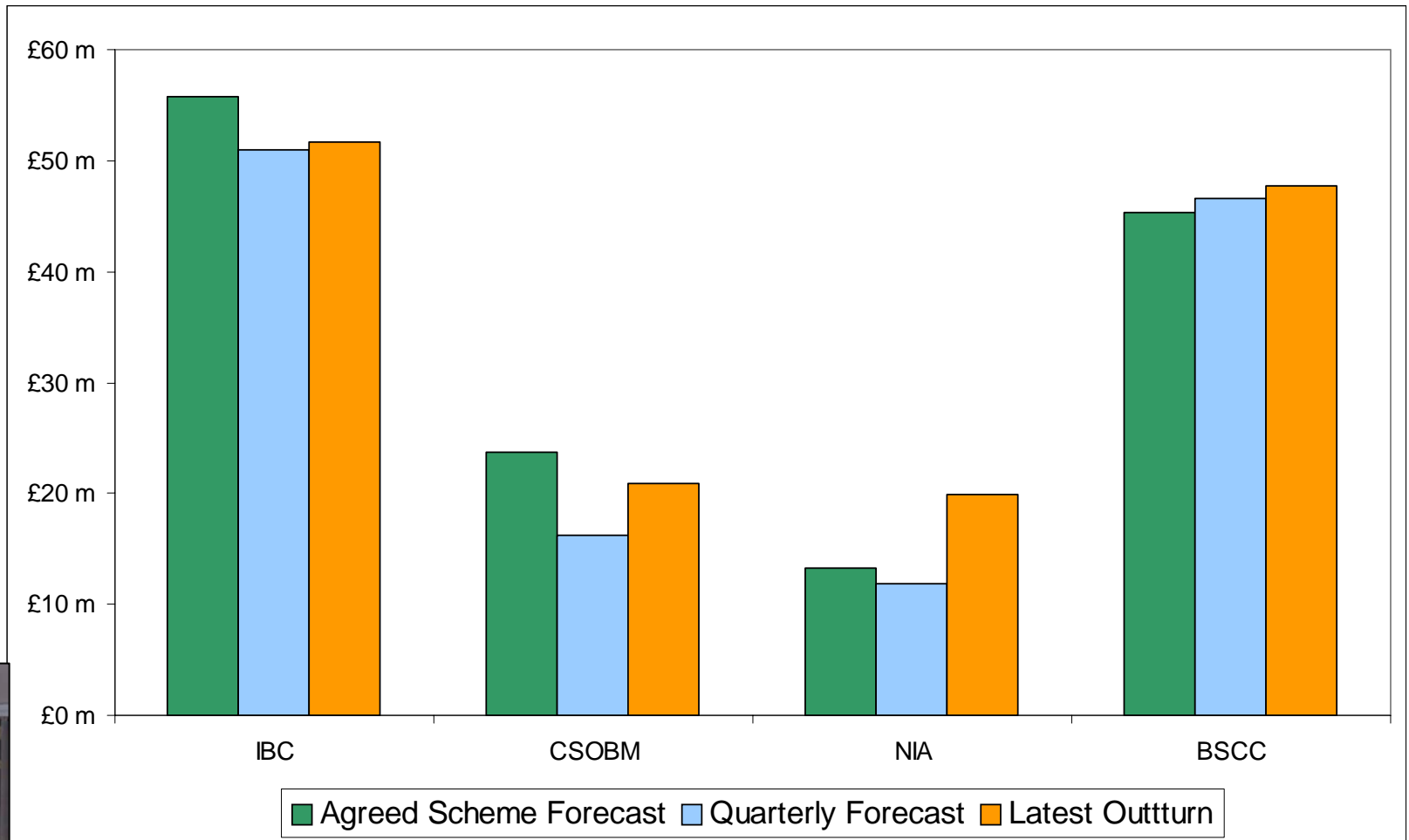


Peak Demand October 2009 onwards

Actual v Normal



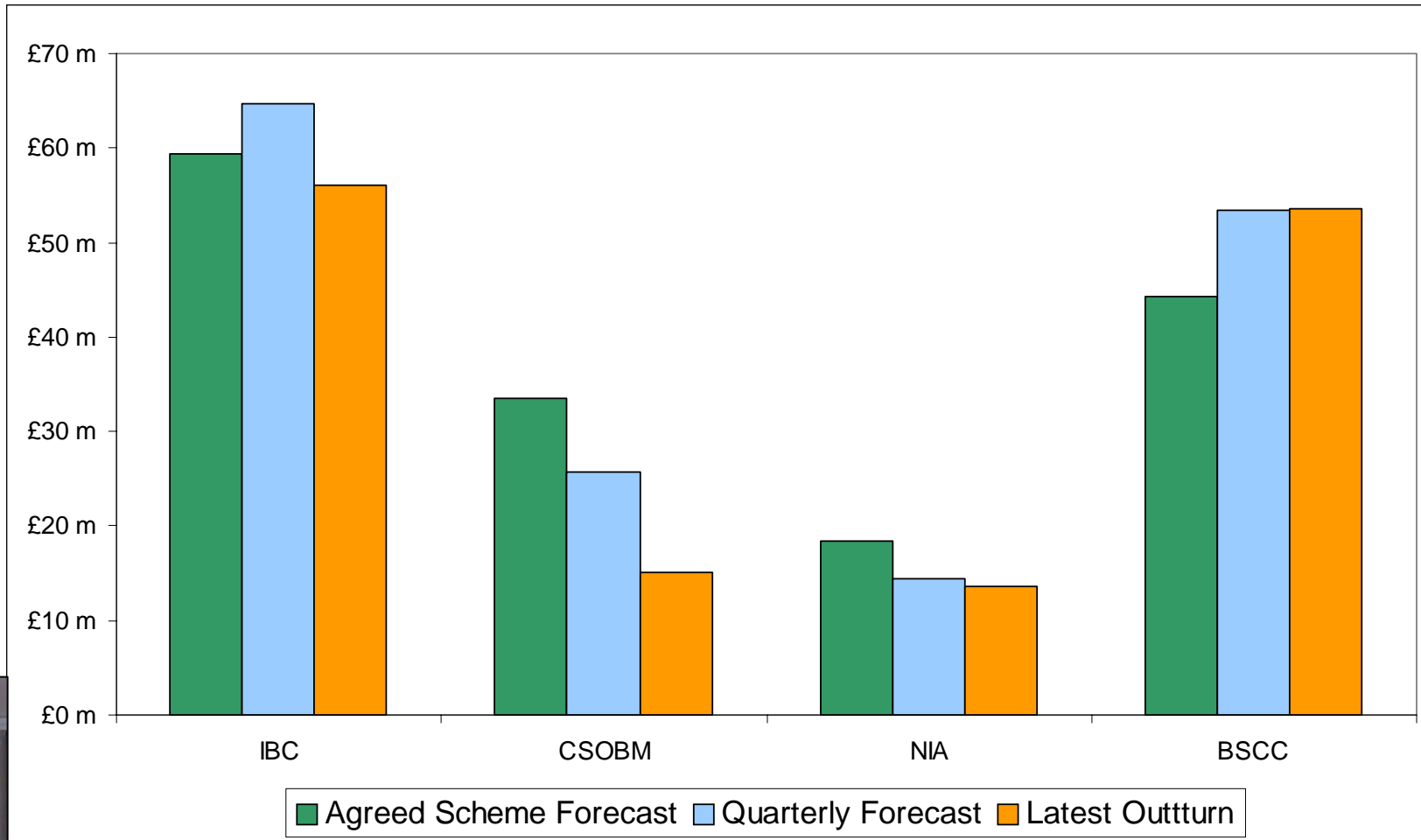
IBC component comparison – October 2009



Stuart Bailey

Interim Operational Forum December 2009

IBC component comparison - November 2009

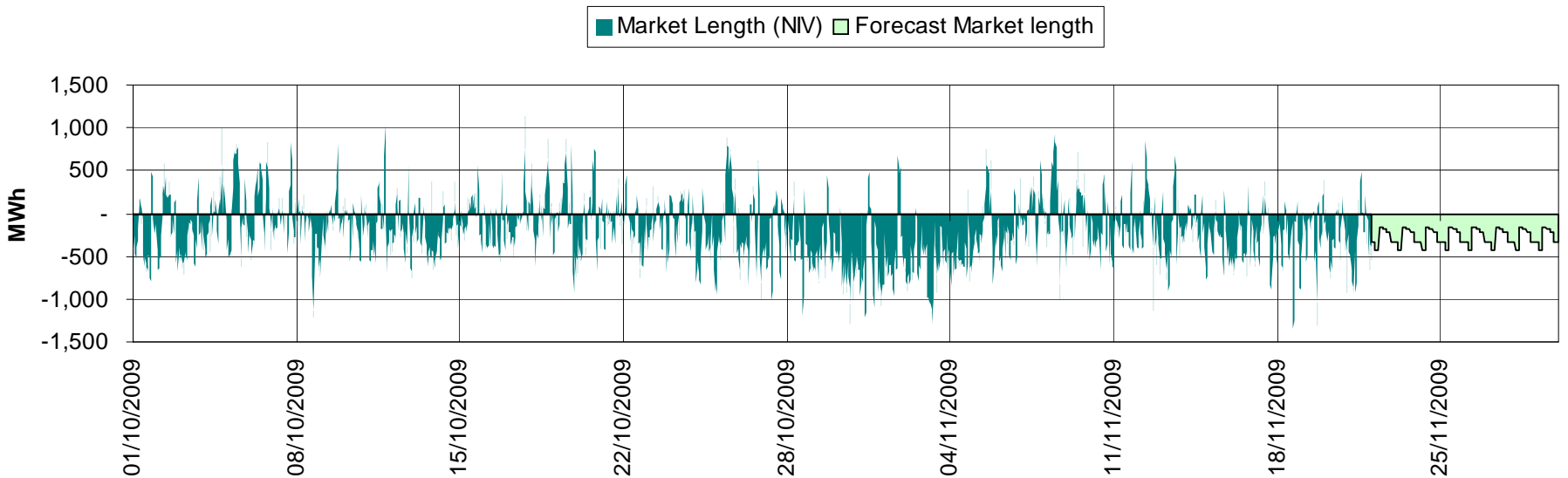


Stuart Bailey

Interim Operational Forum December 2009

Market Length – October & November

Market Length (NIV) Oct - Nov 2009



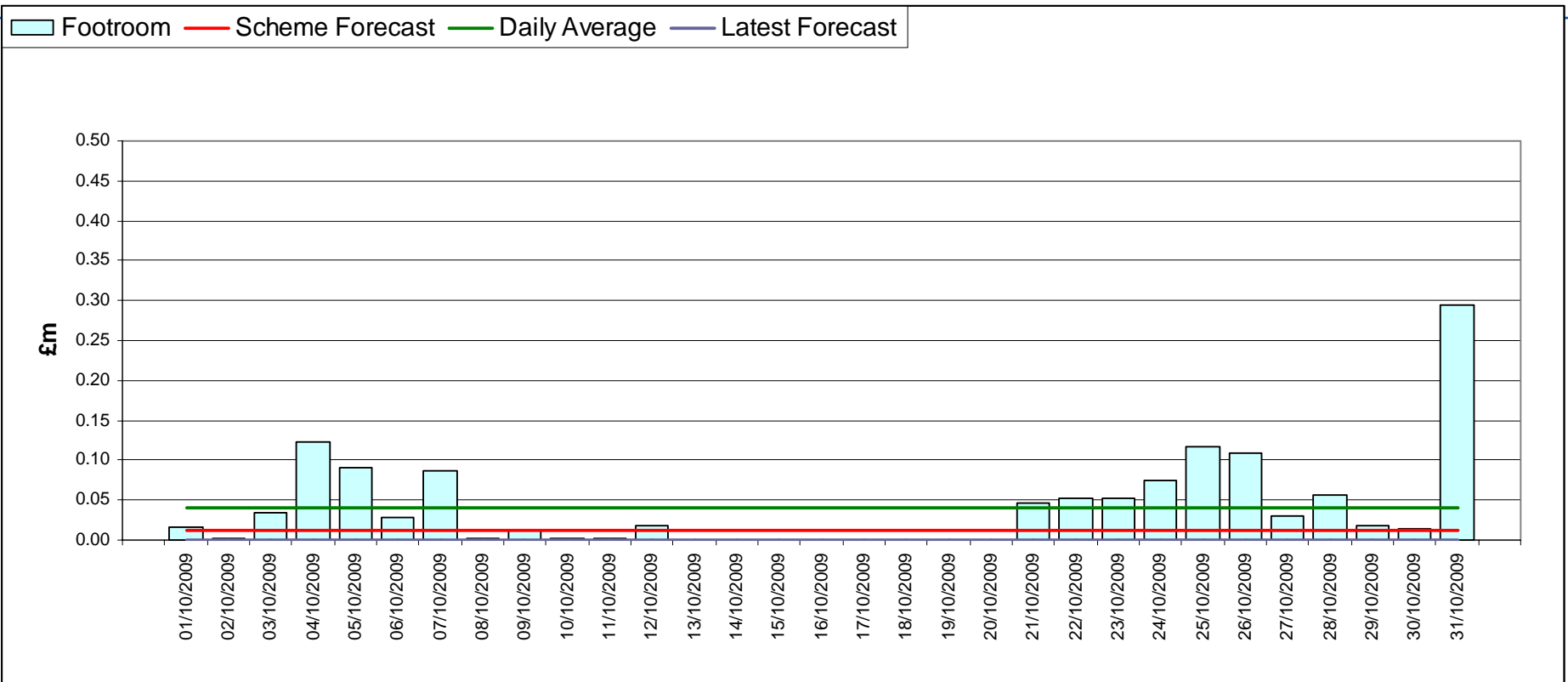
Stuart Bailey

Interim Operational Forum December 2009

nationalgrid

The power of action.

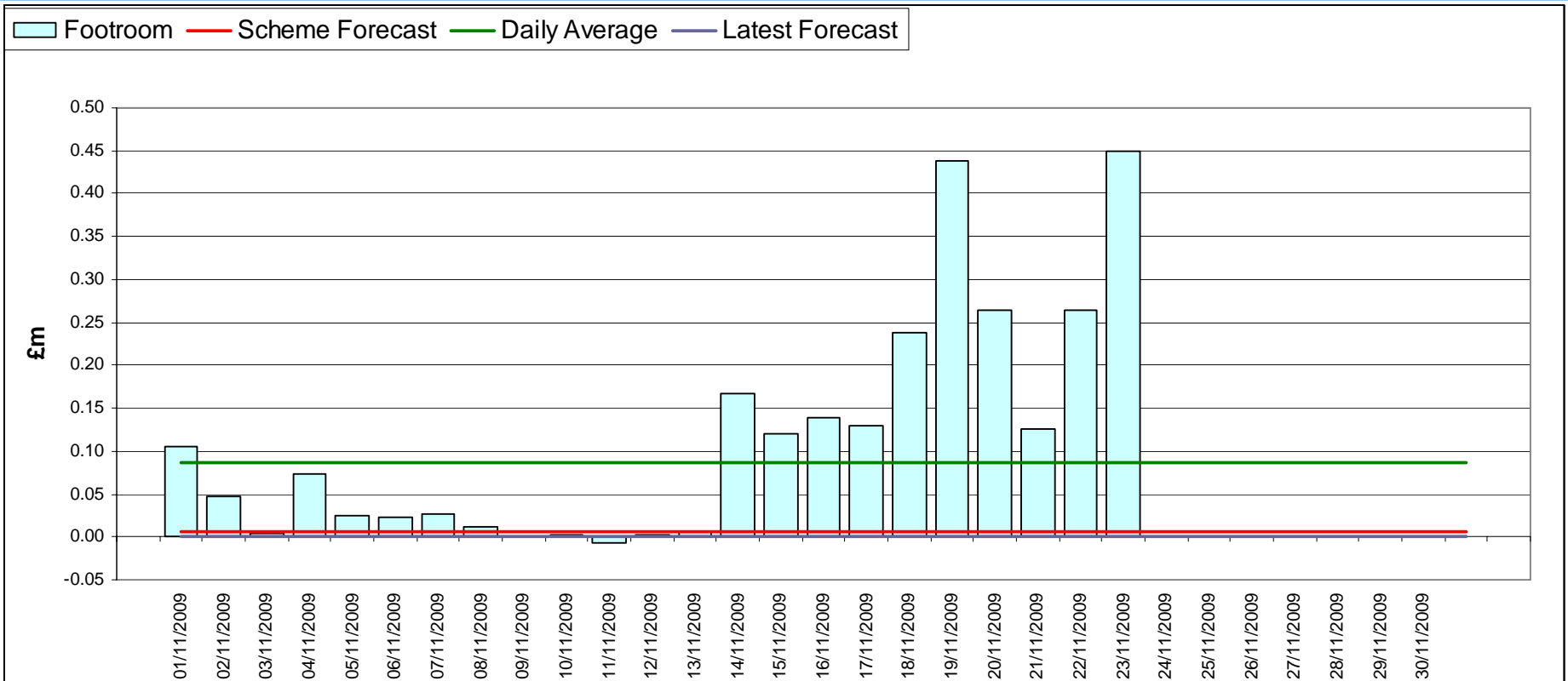
Footroom Costs - October



Stuart Bailey

Interim Operational Forum December 2009

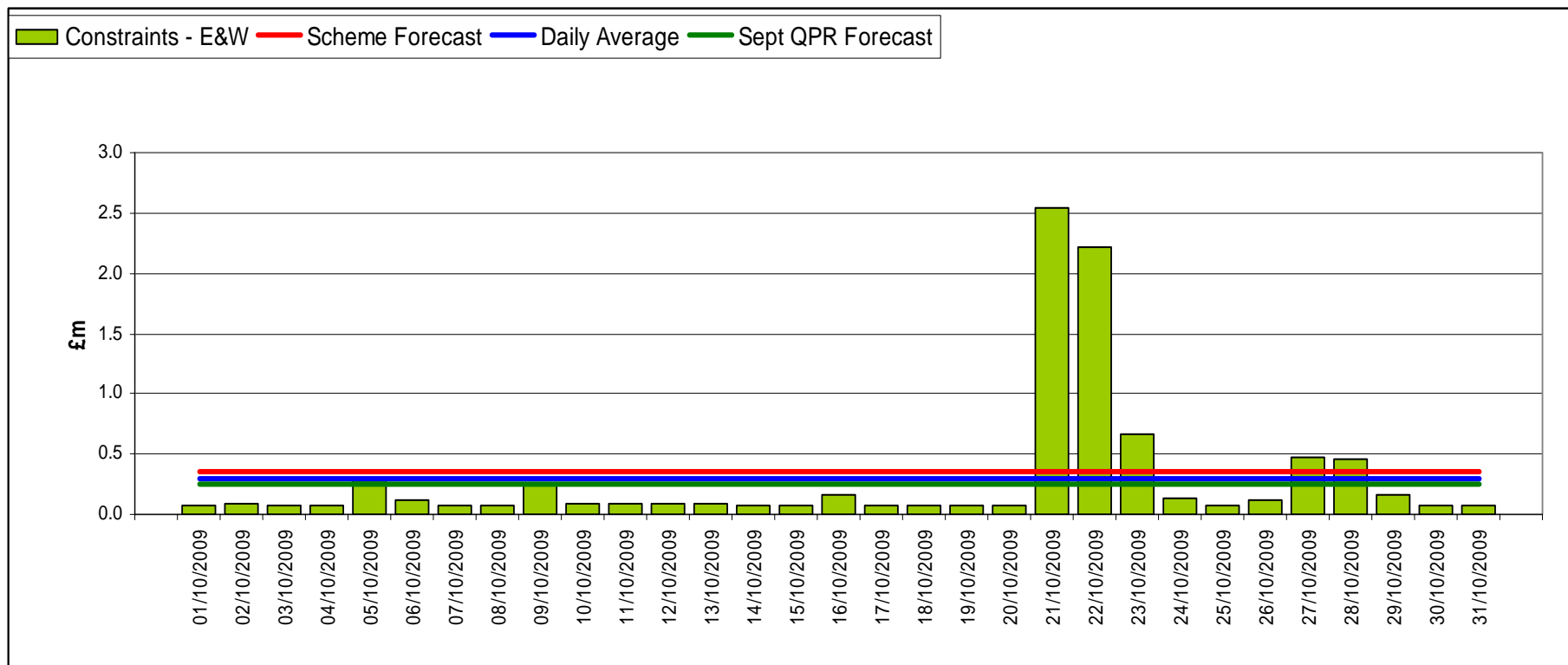
Footroom Costs - November



Stuart Bailey

Interim Operational Forum December 2009

E&W Constraint costs – October



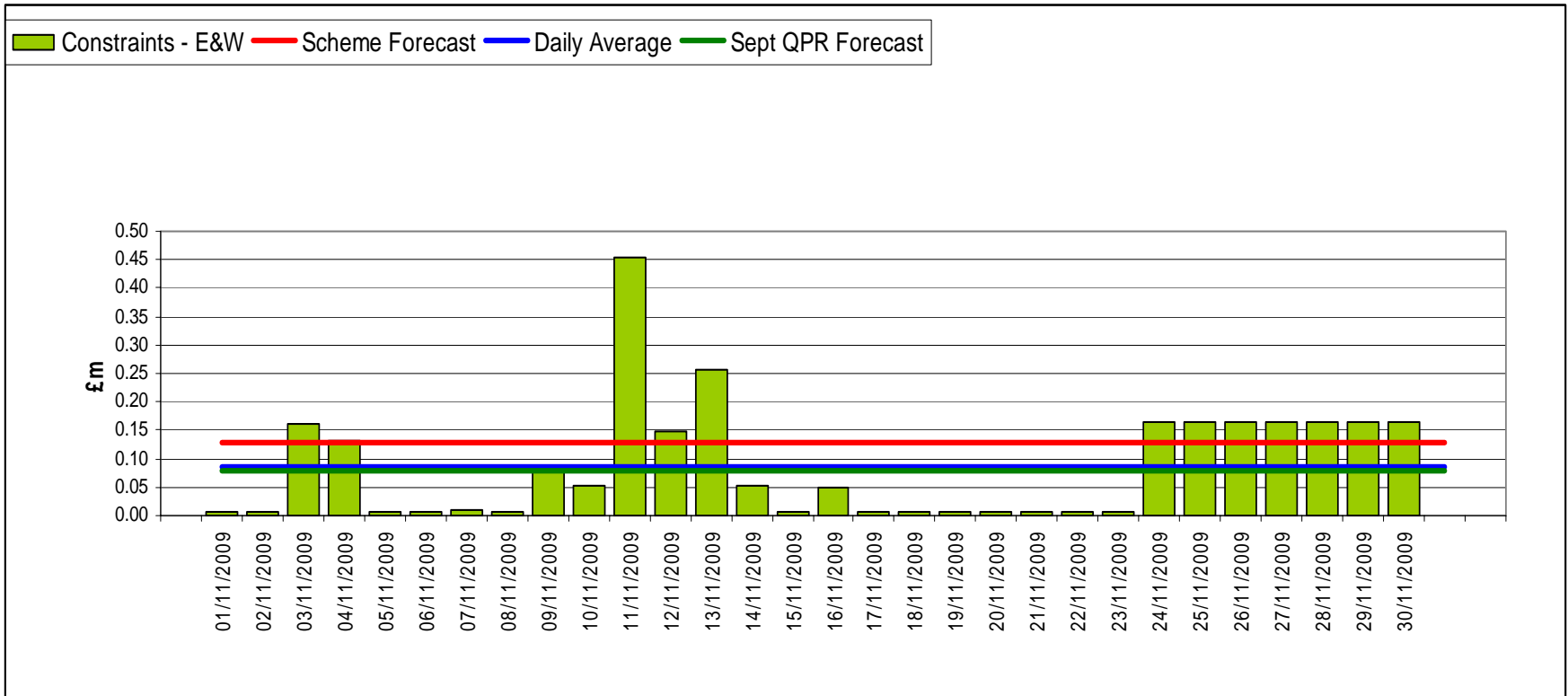
Stuart Bailey

Interim Operational Forum December 2009

nationalgrid

The power of action.

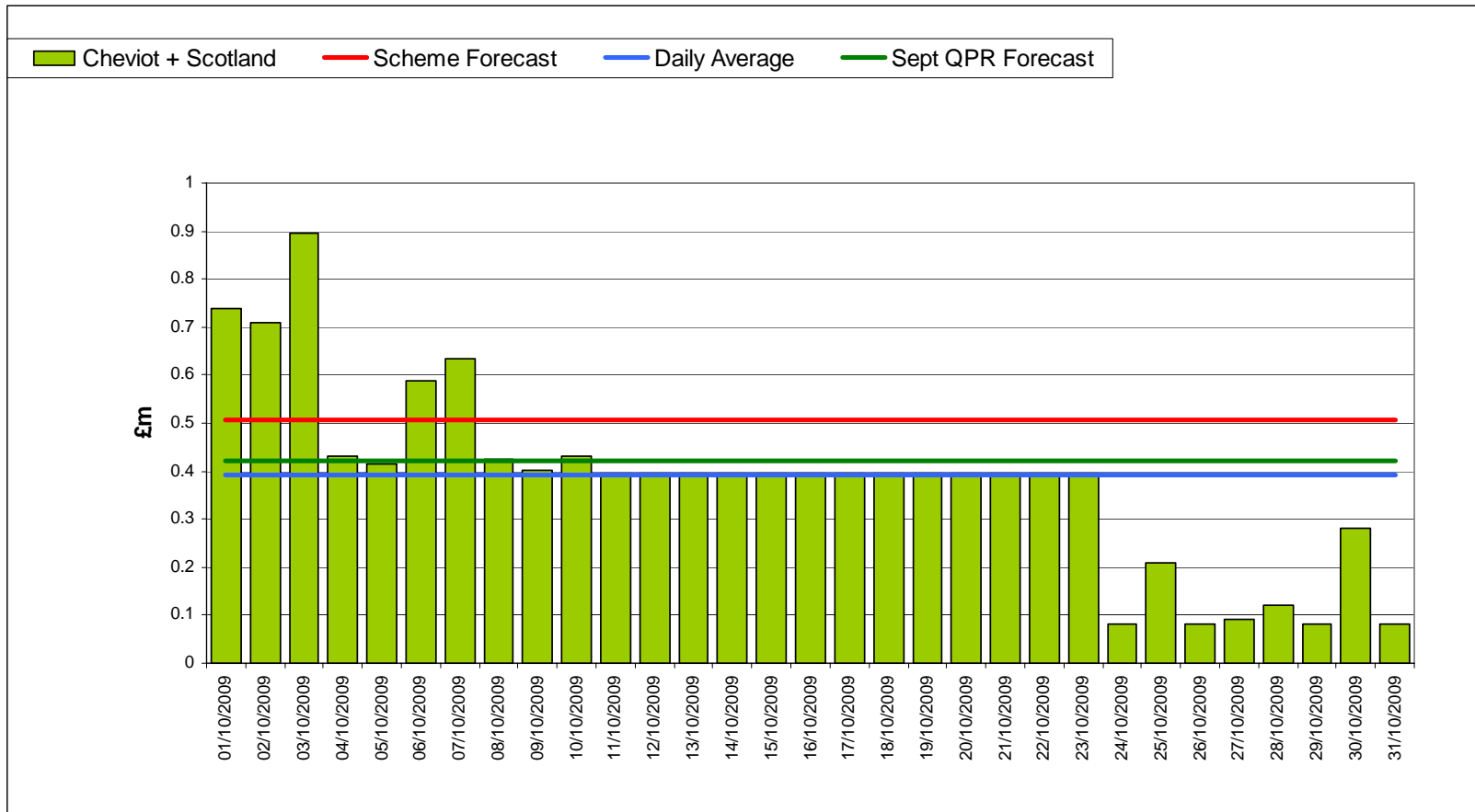
E&W Constraint costs – November



Stuart Bailey

Interim Operational Forum December 2009

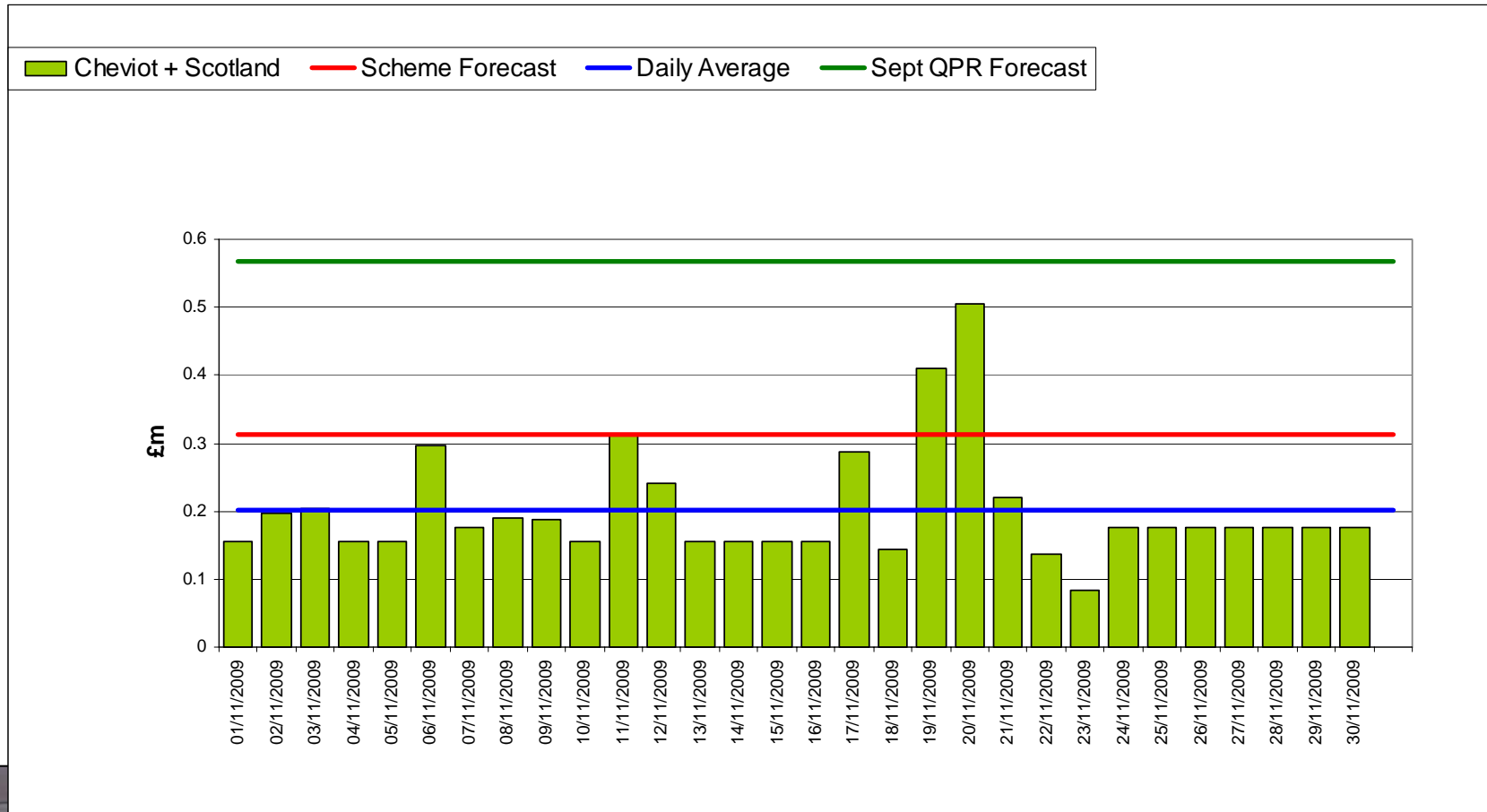
Scotland & Cheviot Constraint costs – October



Stuart Bailey

Interim Operational Forum December 2009

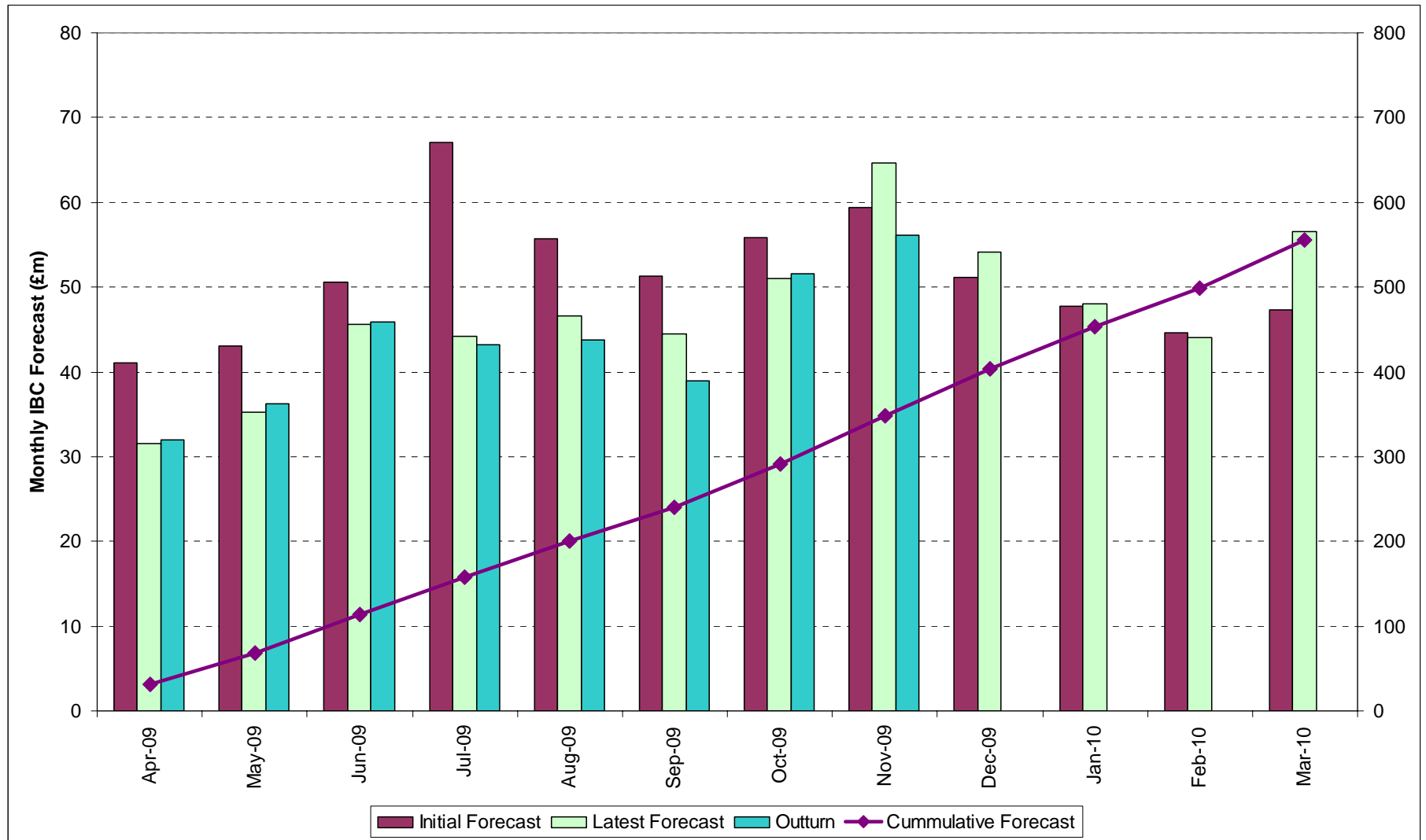
Scotland & Cheviot Constraint costs – November



Stuart Bailey

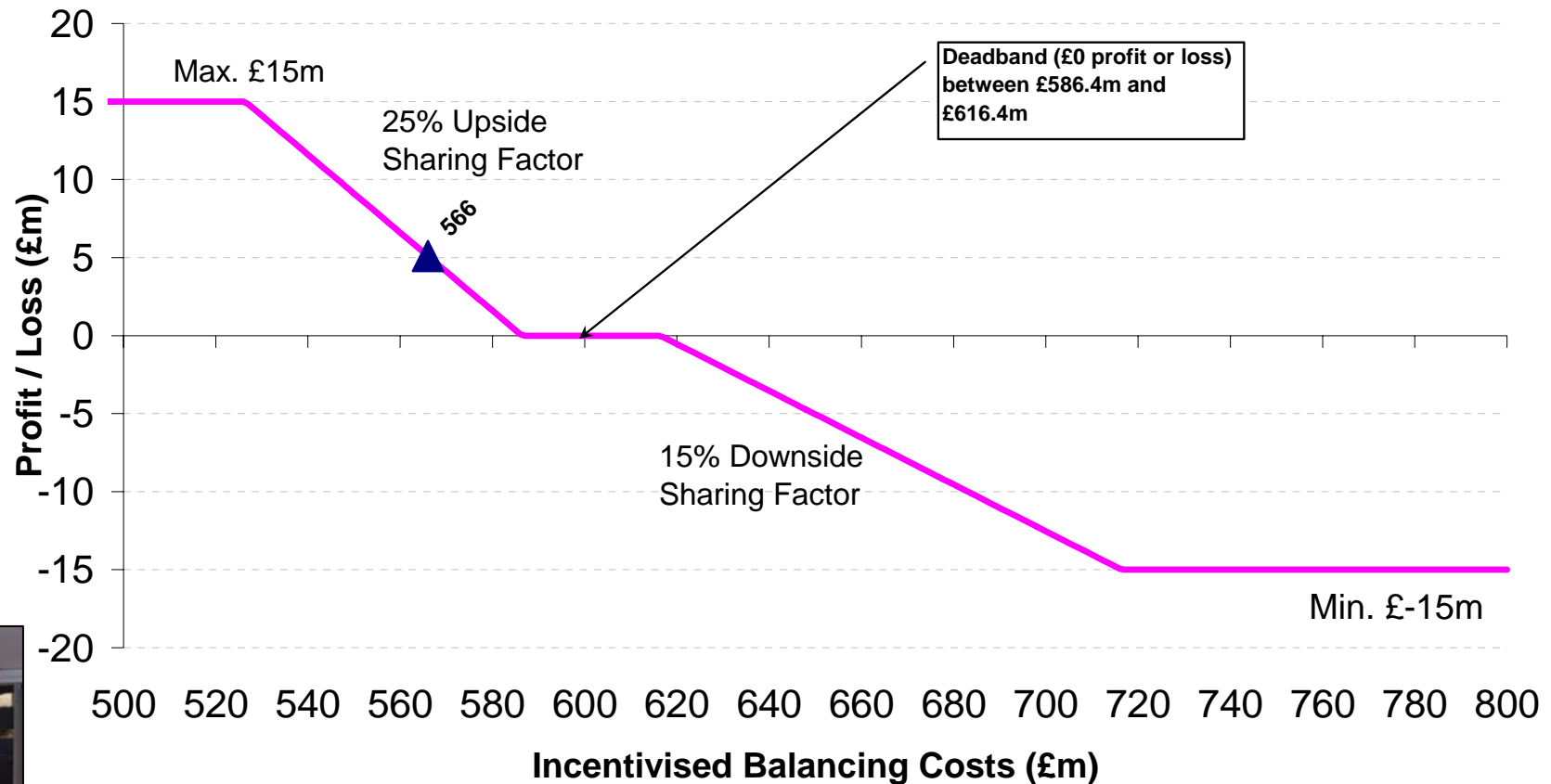
Interim Operational Forum December 2009

Monthly IBC 2009/10 forecasts and outturn



2009/10 Scheme Parameters

2009/10 Balancing Services Incentive Scheme



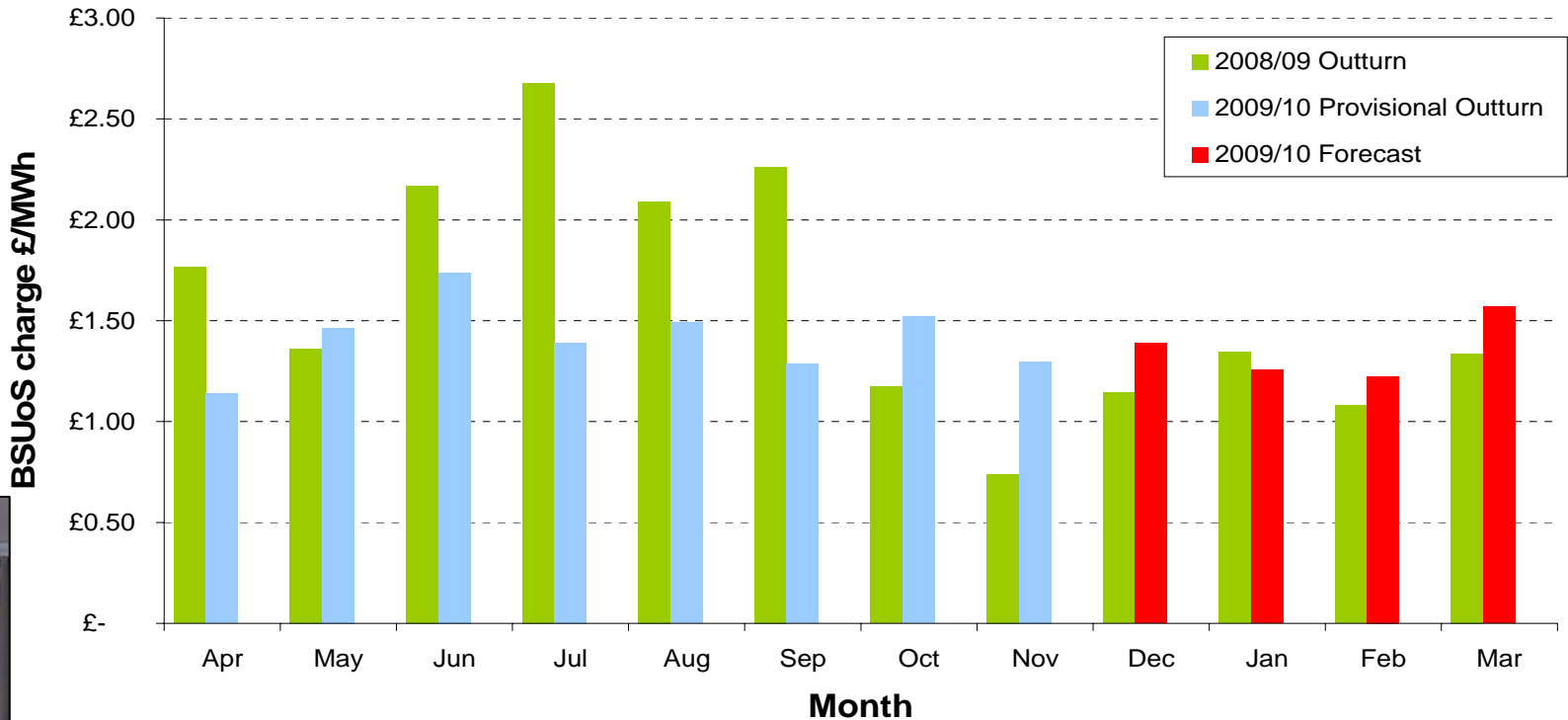
Stuart Bailey

Interim Operational Forum December 2009

Provisional BSUoS outturn / forecasts 2009/10

- ◆ Current BSUoS central forecast £1.39 MWh
- ◆ Overall forecast range £1.30/MWh to £1.50/MWh

Provisional Monthly BSUoS outturn / forecasts 2009/10



Stuart Bailey

Interim Operational Forum December 2009