

STOR Market Information Report: TR 10 (Short-Term Operating Reserve)

Introduction

This market report is produced after each tender round and is designed to give existing and potential STOR participants an overall view of the tenders received in tender round 10. The report provides details of tendered utilisation and availability prices and National Grid's resultant forward contracted position; together with further details on the type, size and dynamics of the tendered plant. For further information regarding this product or how and when to tender please consult the tender and reports section on found on the National Grid Balancing Services information website:

<http://www.nationalgrid.com/uk/Electricity/Balancing/services/reserveservices/STOR/>

Furthermore, information on the use of the STOR service can be seen at monthly resolution in the Monthly Balancing Services Statement or annually in the Procurement Guidelines Report, found on the National Grid Balancing Services information website:

<http://www.nationalgrid.com/uk/Electricity/Balancing/Summary/>
<http://www.nationalgrid.com/uk/Electricity/Balancing/transmissionlicensestatements/PG/>

In assessing the benefit of a STOR tender, the value and costs of that tender are considered. The forecast cost of an accepted tender will reflect expected availability costs and utilisation costs which incorporate the MNZT of the unit. The tender assessment further considers the reliability, the location and the response times of the tendered unit. The latest assessment principles can be found on the STOR section of the Balancing Services website.

The report is divided into 3 sections:

- Section 1 provides a summary of tendered and accepted volumes and price information across seasons. The data is broken down by response time and flexible or committed service providers.
- Section 2 provides an overview of long term tenders received.
- Section 3 provides an overview of the total contracted position for each season from TR10 and previous tender rounds.

Disclaimer of liability

The information contained or referred to in this market report and all other information relating to Short Term Operating Reserve which is provided by National Grid at any time whether before or after the date of publication of this market report is provided in good faith. Although National Grid makes reasonable efforts to ensure the accuracy and integrity of such information, no warranty or representation or other obligation or commitment of any kind is given by National Grid, its employees or advisors as to the accuracy, completeness, timeliness or fitness for any purpose of any such information. Neither National Grid nor its employees or advisors shall be under any liability for any error nor misstatement contained in this market report and will not be liable for any loss caused as a result of the reader doing or not doing anything as a result of reading this market report or any part of it.

Copyright

Any and all copyright and all other intellectual property rights contained in this document belong to National Grid. To the extent that you re-use the document, in its original form and without making any modifications or adaptations thereto, you must reproduce, clearly and prominently, the following copyright statement in your own documentation:

© National Grid plc, all rights reserved.

Section 1.1 Submitted and Accepted Volumes

At the close of TR10 National Grid had received 496 individual tenders from 35 companies for STOR contracts for 2010/11, 24 tenders for contracts in 2011/12 and 4 'all or nothing' tenders for contracts covering April 2011 to 2015. The longer term tenders are described in **section 2**.

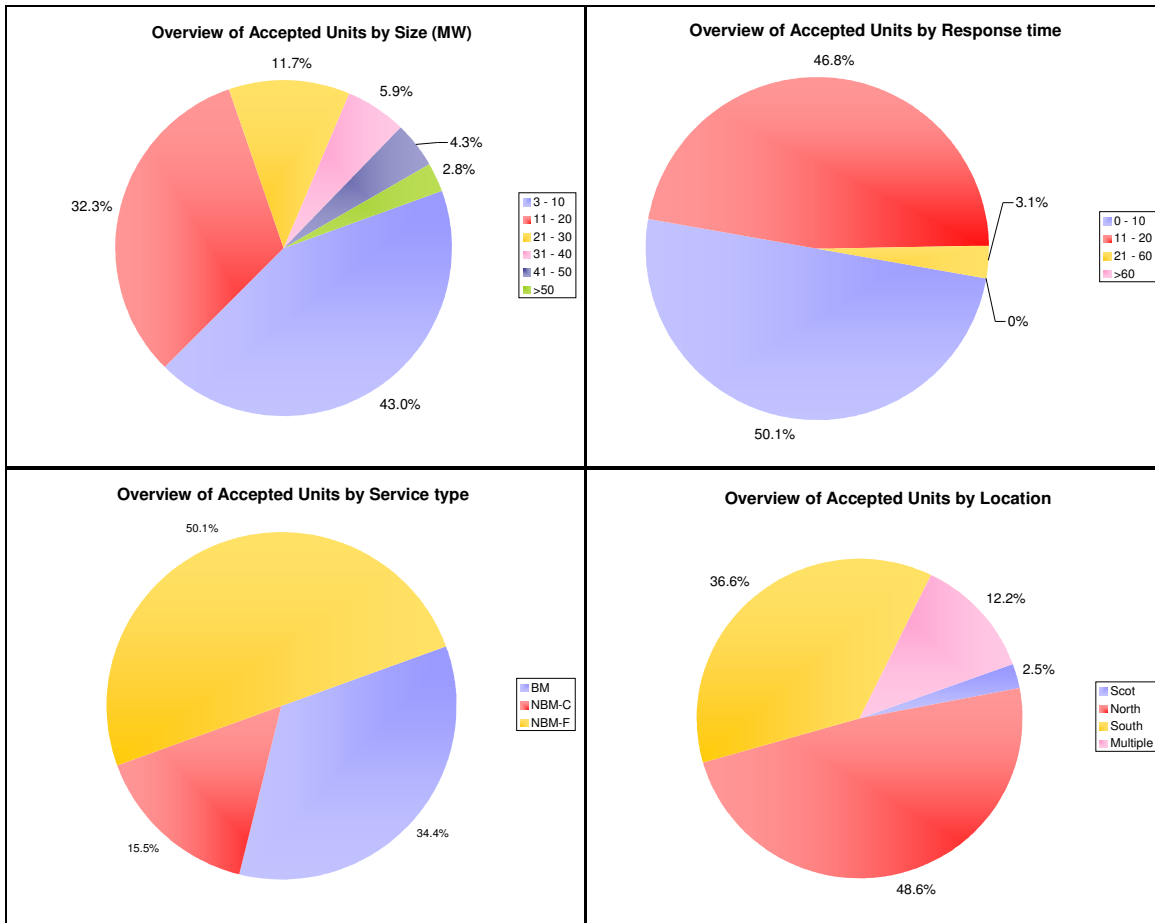
A total of 393 tenders were accepted for 2010/11, the remaining tenders were rejected due to high availability prices, high utilisation costs, slow response times, reliability and location or a combination of two or more of these factors.

Table 1 below shows the total number of MWs tendered and accepted together with their respective availability and utilisation prices.

Season	Service Type	4.1			4.2			4.3			4.4			4.5			4.6		
		BM - C	NBM - C	NBM - F	BM - C	NBM - C	NBM - F	BM - C	NBM - C	NBM - F	BM - C	NBM - C	NBM - F	BM - C	NBM - C	NBM - F	BM - C	NBM - C	NBM - F
	TR 8 Tendered MW	532	-	-	532	-	-	532	-	-	532	-	-	532	-	-	532	-	-
	TR 8 Accepted MW	-	-	-	-	-	-	-	-	-	-	-	-	-	-	-	-	-	-
	TR 9 Tendered MW	922	332		922	315		922	272		887	285		887	21		887	21	
	TR 9 Accepted MW	922	55		922	51		922	8		887	8		887	8		887	8	
	TR 10 Tendered MW	788	496	574	782	482	579	786	411	292	706	405	319	677	61	257	676	63	257
	TR 10 Accepted MW	788	349	519	782	342	524	634	84	215	554	67	227	645	27	224	644	29	224
	sub Total Tendered MW	2242	828	574	2236	797	579	2240	683	292	2125	690	319	2096	82	257	2095	84	257
	sub Total Accepted MW	1710	404	519	1704	393	524	1556	92	215	1441	75	227	1532	35	224	1531	37	224
	Total Accepted MW	2633			2621			1863			1743			1791			1792		
Average Submitted Availability Price (£MWh)	TR8	10.75	-	-	10.75	-	-	10.75	-	-	10.93	-	-	10.93	-	-	10.93	-	-
	TR9	£10.15	£9.25	-	£10.15	£9.27	-	£10.15	£10.24	-	£10.23	£10.24	-	£10.94	£10.75	-	£10.94	£10.75	-
	TR10	£9.63	£8.74	£7.83	£9.62	£8.77	£7.86	£9.83	£8.89	£8.41	£9.75	£8.90	£8.57	£9.72	£10.72	£8.65	£9.72	£10.65	£8.73
Average Accepted Availability Price (£MWh)	TR8	-	-	-	-	-	-	-	-	-	-	-	-	-	-	-	-	-	-
	TR9	£10.15	£9.25		£10.15	£9.27		£10.15	£10.24		£10.23	£10.24		£10.94	£10.75		£10.94	£10.75	£10.75
	TR10	£9.63	£8.91	£7.77	£9.62	£8.95	£7.81	£9.55	£9.46	£7.82	£9.40	£9.72	£8.03	£9.61	£8.94	£8.52	£9.61	£8.91	£8.60
Average Submitted Utilisation Price (£MWh)	TR8	£305.72	-	-	£305.72	-	-	£305.72	-	-	£305.72	-	-	£305.72	-	-	£305.72	-	-
	TR9	£272.72	£244.36	-	£272.72	£244.18	-	£272.72	£242.49	-	£271.52	£242.55	-	£271.52	£285.29	-	£271.52	£285.29	-
	TR10	£303.25	£221.81	£250.68	£303.30	£222.28	£252.32	£305.27	£217.12	£252.39	£315.86	£217.60	£238.93	£318.45	£246.07	£256.71	£318.52	£249.37	£254.77
Average Accepted Utilisation Price (£MWh)	TR8	-	-	-	-	-	-	-	-	-	-	-	-	-	-	-	-	-	-
	TR9	£272.72	£254.47	-	£272.72	£254.04	-	£272.72	£249.50	-	£271.52	£249.50	-	£271.52	£269.50	-	£271.52	£269.50	-
	TR10	£303.25	£222.41	£242.08	£303.30	£222.63	£243.87	£320.91	£249.23	£255.99	£336.68	£246.42	£241.81	£321.35	£270.74	£258.93	£321.43	£276.21	£257.01

* Average Prices are Weighted by MW Volume and Hours Tendered

Figure 1 gives an overview of the number of accepted STOR units, broken down by unit size and by response times, service type and location. The charts demonstrate that 97% of units accepted can provide STOR within 20 minutes however only 13% of units can provide over 40 MW per instruction. **Please note the size of a unit is not a factor in the assessment of tenders and is presented here for information purposes only.**



Section 1.2 Prices

Figures 2 & 3 below show the range of accepted and rejected prices by response time categories for availability and utilisation prices respectively. Each tender is represented by a point and the horizontal red bars represent the median for the respective groups. Please note these plots do not show the relationship that exists between a unit's availability and its utilisation price. To see more detailed data see Figure 4 and Appendix 3.

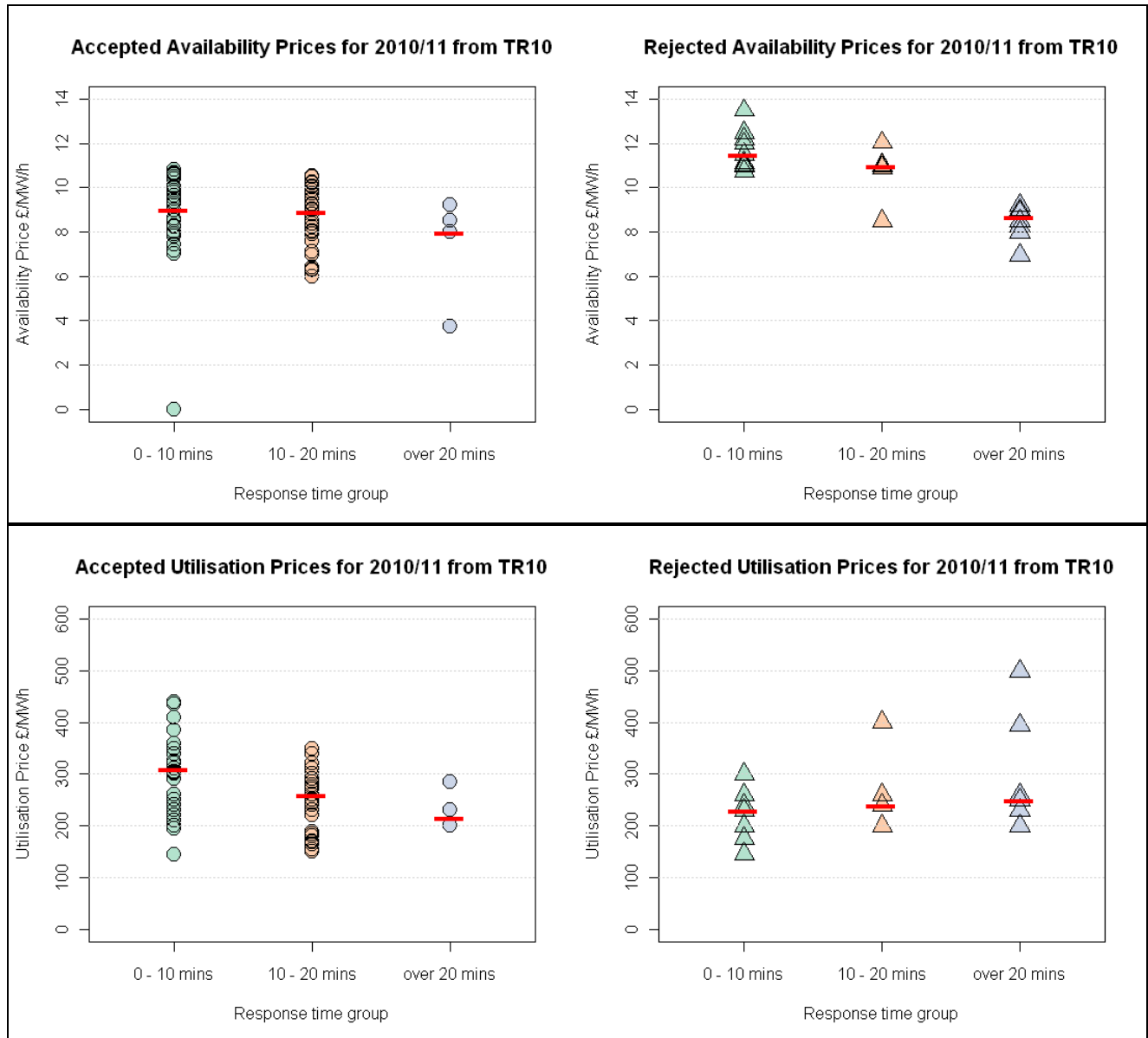
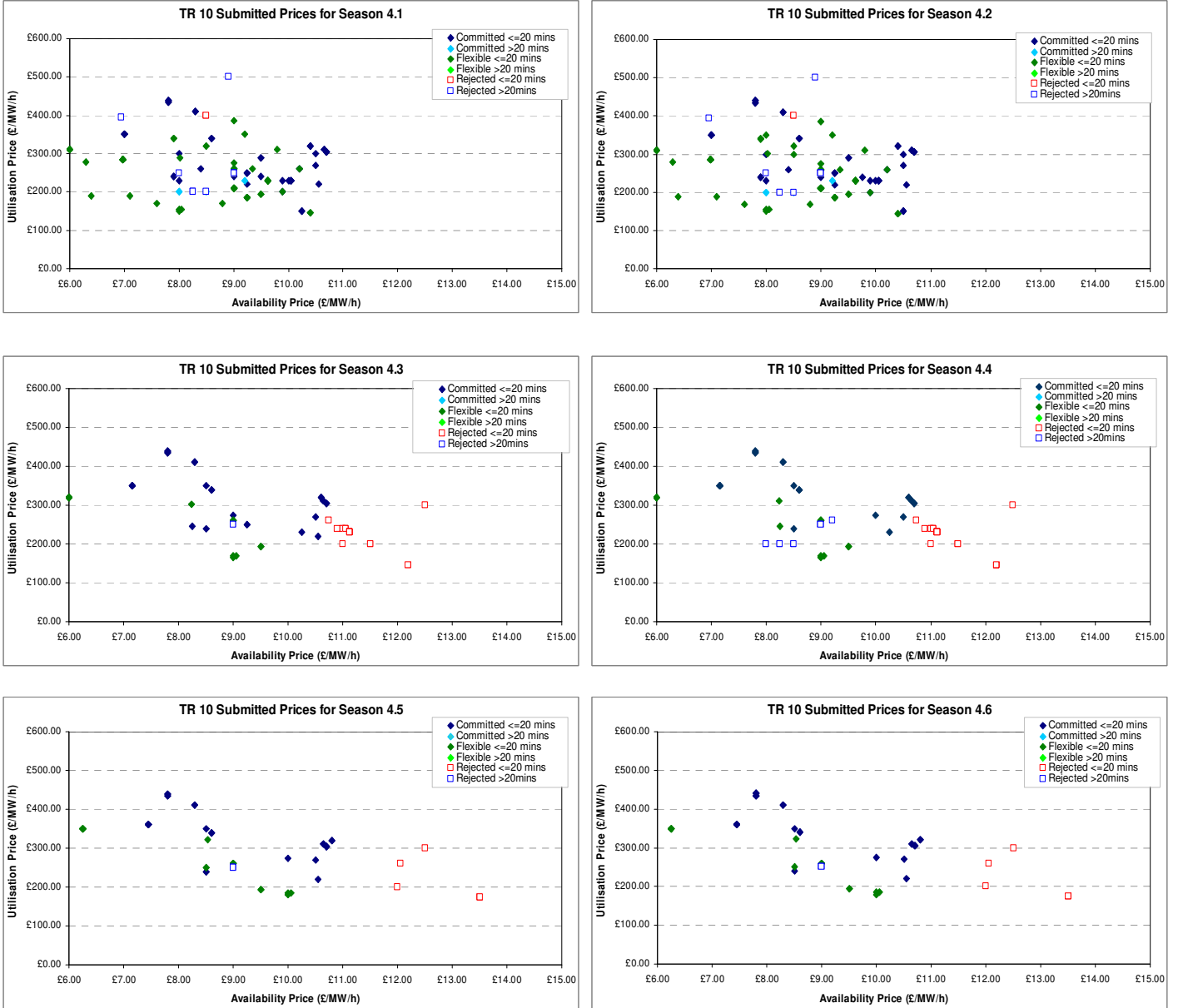
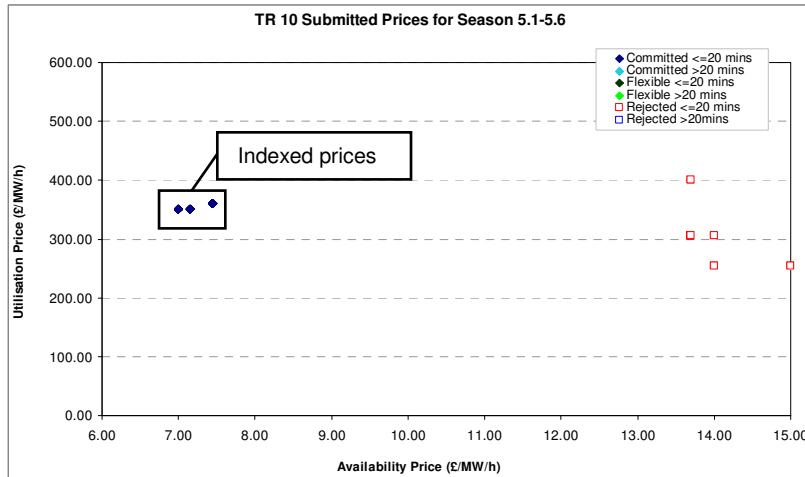


Figure 4 below shows scatter plots of availability and utilisation price for each season. The data is broken down into response time groups, flexible or committed service and accepted or rejected tenders.



Section 2 Long Term Tenders

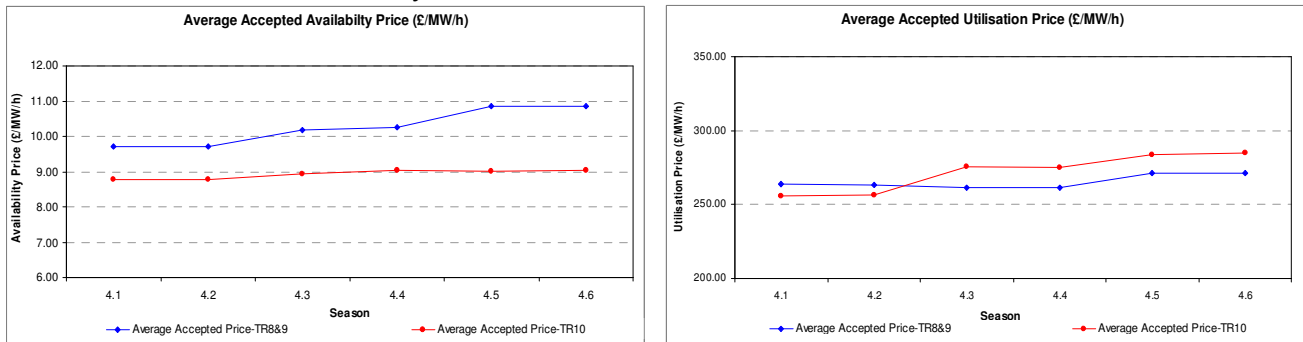
National Grid received 24 tenders for STOR contracts for 2011-12 on four existing STOR units and a further 4 “all or nothing” tenders for four existing STOR units for contracts from 2011 to 2015 with index linked prices. All tenders had response times less than 20 minutes and were committed service contracts. The availability prices were in the range of £7 - £15.00 /MW/h and the utilisation prices were in the range of £220 - £350/MWh. The 5 year index linked tenders were accepted all others were rejected. **Figure 5** below shows the accepted and rejected tenders for year 5.



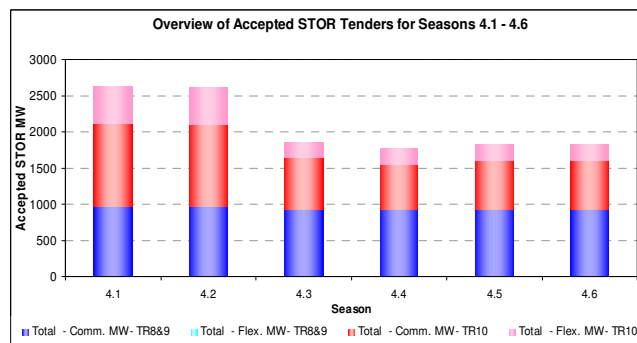
See **Appendix 4** for more detailed information on long term tenders.

Section 3 Total Contracted Position

Figure 6 below shows the average accepted availability and utilisation† prices for this and previous tender rounds. The last graph shows the breakdown of accepted volumes by committed and flexible services across the seasons of year 4.



*Average Prices are Weighted by Volume and Availability Time



* A list of currently agreed indexation methodologies are available on the STOR website.

† Average prices are weighted by volume and availability hours but do not include indexation where applicable.

Appendix 1: Terminology and Definitions

Term	Definition
STOR	Short-Term Operational Reserve
STORR	Short-Term Operational Reserve Requirement
Unit	As described within a STOR framework agreement as constituting a STOR site
Year4	Equivalent to Financial Year 2010/11 commencing on 1st April 2010
Year 5	Equivalent to Financial Year 2011/12 commencing on 1st April 2011
Average Availability (£/MW/h) / Utilisation Price (£/MWh)	The average price weighted by Volume and Availability Hours for the specified period.
TR	Tender Round

High level description of STOR:

STOR is designed to give National Grid sufficient short term operating reserve to replace sudden generation losses, or unpredictable changes in demand at real time and requires a large proportion of units to be available within 20 minutes. STOR also recognises that other potential reserve providers who cannot meet the 20 minute response time criteria can still be of value in meeting our reserve requirement. Hence a key aspect of the definition of the STOR product is that it extends the maximum response time to 240 minutes to allow new providers to participate. A lower value however is placed on these units as they are likely to compete with alternative options available in the Balancing Mechanism with equivalent response times. Location, reliability size and utilisation parameters are also important elements of the STOR assessment.

The committed service applies to all providers who wish to make themselves available for all required windows nominated by National Grid. Both BM and NBM providers can tender for this service. The flexible service applies only to NBM providers and allows the provider to make the unit available or unavailable for particular windows. This availability is assessed on a week-ahead basis and providers are notified if their service is required or not. It is at the discretion of National Grid to whether a unit is accepted or rejected at the week ahead stage and this decision will be determined based on the same factors which influence a tender assessment. Both Services attract an availability payment paid on a £/MW/h basis when available within defined windows and an utilisation payment on delivery of STOR MW when instructed by National Grid paid on a £/MWh basis.

Appendix 2: Season Reference

The following tables summarise the seasons for the current year (Year 4) and the year. For Tender dates etc see the National Grid website as mentioned on page 1 of this report. For further Years please see tender sheets on the National Grid website

Seasons 2010/11									
Season	Dates	Wdow	WD		NWD		Hours/Day Type		Total
			Start Time	End Time	Start Time	End Time	WD	NWD	
1	05:00 Thursday 1st Apr 2010 05:00 Monday 26th Apr 2010	I	07:00	13:30	10:00	14:00	190	32.5	222.5
		II	19:00	22:00	19:30	22:00			
2	05:00 Monday 26th Apr 2010 - 05:00 Monday 16th Aug 2010	I	07:30	14:00	09:30	13:30	1081	126	1207
		II	16:00	18:00	19:30	22:30			
			19:30	22:30					
3	05:00 Monday 16th Aug 2010 05:00 Monday 20th Sep 2010	I	07:30	14:00	10:30	13:30	348	36	384
		II	16:00	21:30	19:00	22:00			
4	05:00 Monday 20th Sep 2010 05:00 Monday 1st Nov 2010	I	07:00	13:30	10:30	13:30	396	39	435
		II	16:30	21:00	17:30	21:00			
5	05:00 Monday 1st Nov 2010 - 05:00 Monday 31st Jan 2011	I	07:00	13:30	10:30	13:30	839.5	135	974.5
		II	16:00	21:00	16:00	20:30			
6	05:00 Monday 31st Jan 2011 - 05:00 Friday 1st Apr 2011	I	07:00	13:30	10:30	13:30	572	60	632
		II	16:30	21:00	16:30	21:00			
						3426.5	428.5	3855	
						Total Hours		3855	
Season	WD	NWD							
1	20	5							
2	94	18							
3	29	6							
4	36	6							
5	73	18							
6	52	8							

Seasons 2011/12									
Season	Dates	Wdow	WD		NWD		Hours/Day Type		Total
			Start Time	End Time	Start Time	End Time	WD	NWD	
1	05:00 on Friday 1st Apr 2011 -	I	07:00	13:30	10:00	14:00	190	26	216
		II	19:00	22:00	19:30	22:00			
2	05:00 on Monday 25th Apr	I	07:30	14:00	09:30	13:30	1069.5	133	1202.5
		II	16:00	18:00	19:30	22:30			
			19:30	22:30					
3	05:00 on Monday 15th Aug	I	07:30	14:00	10:30	13:30	348	36	384
		II	16:00	21:30	19:00	22:00			
4	05:00 on Monday 19th Sep	I	07:00	13:30	10:30	13:30	396	39	435
		II	16:30	21:00	17:30	21:00			
5	05:00 on Monday 31 Oct 2011 -	I	07:00	13:30	10:30	13:30	862.5	120	982.5
		II	16:00	21:00	16:00	20:30			
6	05:00 on Monday 30th Jan	I	07:00	13:30	10:30	13:30	594	60	654
		II	16:30	21:00	16:30	21:00			
						3460	414	3874	
						Total Hours		3874	
Season	WD	NWD							
1	20	4							
2	93	19							
3	29	6							
4	36	6							
5	75	16							
6	54	8							

TR 10 Accepted Tenders - Season 4.2

Flexible/Committed	Response Time	Availability Price	Utilisation Price	Location	Flexible/Committed	Response Time	Availability Price	Utilisation Price	Location
C	5	£10.70	£305.00	North	F	1	£0.00	£220.00	South
C	5	£10.70	£305.00	North	F	5	£9.80	£310.00	North
C	5	£10.70	£305.00	North	F	6	£9.00	£210.00	North
C	7	£7.00	£350.00	North	F	6	£9.00	£210.00	North
C	7	£7.00	£350.00	North	F	6	£9.00	£210.00	North
C	7	£7.00	£350.00	North	F	6	£9.00	£210.00	North
C	7	£7.00	£350.00	North	F	6	£9.00	£210.00	North
C	8	£9.90	£200.00	North	F	6	£9.00	£210.00	North
C	8	£10.40	£320.00	North	F	6	£9.00	£210.00	North
C	8	£10.40	£320.00	North	F	6	£9.00	£210.00	North
C	8	£10.65	£310.00	North	F	8	£9.63	£230.00	North
C	8	£10.65	£310.00	North	F	8	£9.63	£230.00	North
C	10	£8.60	£340.00	North	F	8	£9.63	£230.00	North
C	10	£8.60	£340.00	North	F	8	£9.63	£230.00	North
C	10	£9.00	£240.00	North	F	8	£9.63	£230.00	North
C	10	£10.50	£300.00	North	F	8	£9.63	£230.00	North
C	10	£10.00	£230.00	Scot	F	8	£9.63	£230.00	North
C	10	£10.05	£230.00	Scot	F	8	£9.90	£200.00	North
C	10	£7.80	£435.00	South	F	9	£10.40	£145.00	South
C	10	£7.80	£435.00	South	F	9	£10.40	£145.00	South
C	10	£7.80	£440.00	South	F	10	£8.50	£320.00	North
C	10	£7.80	£440.00	South	F	10	£9.00	£385.00	North
C	10	£8.30	£410.00	South	F	10	£9.35	£260.00	North
C	10	£8.30	£410.00	South	F	10	£9.50	£194.00	North
C	10	£9.25	£250.00	South	F	10	£9.50	£194.00	North
C	10	£9.25	£250.00	South	F	10	£7.90	£340.00	South
C	12	£10.05	£230.00	Scot	F	10	£8.02	£302.00	South
C	12	£10.05	£230.00	Scot	F	15	£9.25	£185.00	North
C	12	£8.00	£230.00	South	F	15	£9.25	£185.00	North
C	12	£9.25	£250.00	South	F	15	£9.25	£185.00	North
C	14	£8.00	£300.00	South	F	15	£9.25	£185.00	North
C	15	£9.90	£230.00	Scot	F	15	£9.25	£185.00	North
C	16	£10.55	£220.00	North	F	15	£10.20	£260.00	North
C	16	£10.50	£270.00	South	F	15	£6.00	£310.00	South
C	20	£9.25	£220.00	North	F	15	£6.00	£310.00	South
C	20	£9.75	£240.00	North	F	19	£6.00	£310.00	South
C	20	£10.20	£260.00	North	F	19	£6.00	£310.00	South
C	20	£10.50	£150.00	North	F	19	£6.00	£310.00	South
C	20	£10.50	£150.00	North	F	20	£6.30	£279.00	North
C	20	£7.90	£240.00	South	F	20	£6.40	£189.00	North
C	20	£7.90	£240.00	South	F	20	£7.60	£169.00	North
C	20	£8.40	£260.00	South	F	20	£8.00	£350.00	North
C	20	£9.50	£290.00	South	F	20	£8.00	£155.00	North
C	20	£9.50	£290.00	South	F	20	£8.00	£150.00	North
C	30	£8.50	£200.00	South	F	20	£8.50	£300.00	North
C	35	£9.20	£230.00	South	F	20	£9.00	£275.00	North
C	60	£8.00	£200.00	South	F	20	£7.10	£189.00	South
C	60	£8.00	£200.00	South	F	20	£7.90	£339.00	South
					F	20	£8.05	£155.00	South
					F	20	£8.80	£169.00	South
					F	20	£9.20	£350.00	South
					F	20	£6.98	£285.00	Various
					F	20	£6.98	£285.00	Various
					F	20	£6.98	£285.00	Various
					F	20	£6.98	£285.00	Various
					F	20	£6.98	£285.00	Various
					F	20	£6.98	£285.00	Various
					F	20	£6.98	£285.00	Various
					F	20	£6.98	£285.00	Various
					F	20	£6.98	£285.00	Various
					F	20	£6.98	£285.00	Various
					F	20	£9.00	£260.00	Various
					F	20	£9.00	£260.00	Various
					F	20	£9.00	£260.00	Various
					F	60	£3.75	£285.00	Various
					F	60	£3.75	£285.00	Various

TR 10 Accepted Tenders - Season 4.5

Flexible/Committed	Response Time	Availability Price	Utilisation Price	Location	Flexible/Committed	Response Time	Availability Price	Utilisation Price	Location
C	5	£10.70	£305.00	North	F	10	£8.54	£321.00	
C	5	£10.70	£305.00	North	F	10	£9.50	£194.00	
C	5	£10.70	£305.00	North	F	10	£9.50	£194.00	
C	7	£7.45	£360.00	North	F	15	£6.25	£350.00	
C	7	£7.45	£360.00	North	F	15	£6.25	£350.00	
C	7	£7.45	£360.00	North	F	19	£6.25	£350.00	
C	7	£7.45	£360.00	North	F	19	£6.25	£350.00	
C	8	£10.65	£310.00	North	F	19	£6.25	£350.00	
C	8	£10.65	£310.00	North	F	20	£8.50	£250.00	
C	8	£10.80	£320.00	North	F	20	£9.00	£260.00	
C	8	£10.80	£320.00	North	F	20	£9.00	£260.00	
C	10	£8.60	£340.00	North	F	20	£9.00	£260.00	
C	10	£8.60	£340.00	North	F	20	£9.00	£260.00	
C	10	£7.80	£440.00	South	F	20	£10.00	£180.00	
C	10	£7.80	£435.00	South	F	20	£10.00	£185.00	
C	10	£7.80	£440.00	South	F	20	£10.05	£185.00	
C	10	£8.30	£410.00	South					
C	10	£8.30	£410.00	South					
C	12	£8.50	£240.00	South					
C	14	£8.50	£350.00	South					
C	16	£10.55	£220.00	North					
C	16	£10.50	£270.00	South					
C	20	£10.00	£275.00	North					

TR 10 Accepted Tenders - Season 4.6

Flexible/Committed	Response Time	Availability Price	Utilisation Price	Location	Flexible/Committed	Response Time	Availability Price	Utilisation Price	Location
C	5	£10.70	£305.00	North	F	10	£9.50	£194.00	North
C	5	£10.70	£305.00	North	F	10	£9.50	£194.00	North
C	5	£10.70	£305.00	North	F	10	£8.54	£324.00	South
C	7	£7.45	£360.00	North	F	15	£6.25	£350.00	South
C	7	£7.45	£360.00	North	F	15	£6.25	£350.00	South
C	7	£7.45	£360.00	North	F	19	£6.25	£350.00	South
C	7	£7.45	£360.00	North	F	19	£6.25	£350.00	South
C	8	£10.65	£310.00	North	F	19	£6.25	£350.00	South
C	8	£10.65	£310.00	North	F	20	£10.00	£180.00	North
C	8	£10.80	£320.00	North	F	20	£10.00	£185.00	North
C	8	£10.80	£320.00	North	F	20	£8.50	£250.00	South
C	10	£8.60	£340.00	North	F	20	£10.05	£185.00	South
C	10	£8.60	£340.00	North	F	20	£9.00	£260.00	Various
C	10	£7.80	£435.00	South	F	20	£9.00	£260.00	Various
C	10	£7.80	£440.00	South	F	20	£9.00	£260.00	Various
C	10	£7.80	£440.00	South					
C	10	£8.30	£410.00	South					
C	10	£8.30	£410.00	South					
C	12	£8.50	£240.00	South					
C	14	£8.50	£350.00	South					
C	16	£10.55	£220.00	North					
C	16	£10.50	£270.00	South					
C	20	£10.00	£275.00	North					

Year 4: Rejected Tender Prices TR 10 – Data of availability & utilisation prices.

TR 10 Rejected Tenders - Season 4.1

Flexible/Committed	Response Time	Availability Price	Utilisation Price	Location	Flexible/Committed	Response Time	Availability Price	Utilisation Price	Location
C	20	£8.50	£400.00	North	F	20	£8.50	£400.00	North
C	30	£8.50	£200.00	North	F	25	£6.95	£395.00	North
C	40	£8.25	£200.00	North	F	25	£8.90	£500.00	North
C	40	£8.25	£200.00	North	F	35	£9.00	£250.00	North
					F	35	£9.00	£250.00	North
					F	35	£9.00	£250.00	North
					F	40	£8.00	£250.00	North

TR 10 Rejected Tenders - Season 4.4

Flexible/Committed	Response Time	Availability Price	Utilisation Price	Location	Flexible/Committed	Response Time	Availability Price	Utilisation Price	Location
C	8	£11.50	£200.00	North	F	6	£12.20	£145.00	South
C	10	£11.00	£240.00	North	F	6	£12.20	£145.00	South
C	10	£12.50	£300.00	North	F	6	£12.20	£145.00	South
C	10	£11.00	£240.00	Scot	F	8	£11.12	£230.00	North
C	10	£11.05	£240.00	Scot	F	8	£11.12	£230.00	North
C	12	£11.05	£240.00	Scot	F	8	£11.12	£230.00	North
C	12	£11.05	£240.00	Scot	F	8	£11.12	£230.00	North
C	15	£10.90	£240.00	Scot	F	8	£11.12	£230.00	North
C	20	£11.00	£200.00	South	F	8	£11.12	£230.00	North
C	30	£8.50	£200.00	North	F	8	£11.12	£230.00	North
C	30	£8.50	£200.00	South	F	8	£11.50	£200.00	North
C	35	£9.20	£260.00	South	F	9	£12.20	£145.00	South
C	40	£8.25	£200.00	North	F	9	£12.20	£145.00	South
C	40	£8.25	£200.00	North	F	10	£10.74	£260.00	North
C	60	£8.00	£200.00	South	F	35	£9.00	£250.00	North
C	60	£8.00	£200.00	South	F	35	£9.00	£250.00	North
					F	35	£9.00	£250.00	North

TR 10 Rejected Tenders - Season 4.2

Flexible/Committed	Response Time	Availability Price	Utilisation Price	Location	Flexible/Committed	Response Time	Availability Price	Utilisation Price	Location
C	20	£8.50	£400.00	North	F	20	£8.50	£400.00	North
C	30	£8.50	£200.00	North	F	25	£6.95	£395.00	North
C	40	£8.25	£200.00	North	F	25	£8.90	£500.00	North
C	40	£8.25	£200.00	North	F	35	£9.00	£250.00	North
					F	35	£9.00	£250.00	North
					F	35	£9.00	£250.00	North
					F	40	£8.00	£250.00	North

TR 10 Rejected Tenders - Season 4.5

Flexible/Committed	Response Time	Availability Price	Utilisation Price	Location	Flexible/Committed	Response Time	Availability Price	Utilisation Price	Location
C	10	£12.00	£200.00	North	F	6	£13.50	£175.00	South
C	10	£12.50	£300.00	North	F	6	£13.50	£175.00	South
C	12	£12.05	£260.00	Scot	F	6	£13.50	£175.00	South
					F	35	£9.00	£250.00	North
					F	35	£9.00	£250.00	North
					F	35	£9.00	£250.00	North

TR 10 Rejected Tenders - Season 4.3

Flexible/Committed	Response Time	Availability Price	Utilisation Price	Location	Flexible/Committed	Response Time	Availability Price	Utilisation Price	Location
C	8	£11.50	£200.00	North	F	8	£11.12	£230.00	North
C	10	£11.00	£240.00	North	F	8	£11.12	£230.00	North
C	10	£12.50	£300.00	North	F	8	£11.12	£230.00	North
C	10	£11.00	£240.00	Scot	F	8	£11.12	£230.00	North
C	10	£11.05	£240.00	Scot	F	8	£11.12	£230.00	North
C	12	£11.05	£240.00	Scot	F	8	£11.12	£230.00	North
C	12	£11.05	£240.00	Scot	F	8	£11.12	£230.00	North
C	15	£10.90	£240.00	Scot	F	8	£11.50	£200.00	North
C	20	£11.00	£200.00	South	F	9	£12.20	£145.00	South
C	30	£8.50	£200.00	North	F	9	£12.20	£145.00	South
C	30	£8.50	£200.00	South	F	10	£10.74	£260.00	North
C	35	£9.20	£230.00	South	F	35	£9.00	£250.00	North
C	40	£8.25	£200.00	North	F	35	£9.00	£250.00	North
C	40	£8.25	£200.00	North	F	35	£9.00	£250.00	North
C	60	£8.00	£200.00	South					
C	60	£8.00	£200.00	South					

TR 10 Rejected Tenders - Season 4.6

Flexible/Committed	Response Time	Availability Price	Utilisation Price	Location	Flexible/Committed	Response Time	Availability Price	Utilisation Price	Location
C	10	£12.00	£200.00	North	F	6	£13.50	£175.00	South
C	10	£12.50	£300.00	North	F	6	£13.50	£175.00	South
C	12	£12.05	£260.00	Scot	F	6	£13.50	£175.00	South
					F	35	£9.00	£250.00	North
					F	35	£9.00	£250.00	North
					F	35	£9.00	£250.00	North

Appendix 4:

Overview of Long Term Tender prices

Accepted & Rejected STOR MW by UNIT TYPE

Season	Total Accepted MW for Season	Number of Units Accepted	Average Accepted Availability Price*	Average Accepted Utilisation Price*	TR 8-9				TR10								
					Rejected BM <=20 mins	Rejected NBM >20 mins	Accepted BM <=20 mins	Accepted NBM <=20 mins	Total MW Tendered	Average Rejected Availability Price*	Average Rejected Utilisation Price*	Rejected BM <=20 mins	Rejected NBM <=20 mins	Rejected NBM >20 mins	Accepted BM <=20 mins	Accepted NBM <=20 mins	Accepted NBM >20 mins
5.1	158	5	£7.57	£281.65			90		188	£13.76	£295.00	96	24		68		
5.2	158	5	£7.57	£281.65			90		186	£13.76	£295.68	96	22		68		
5.3	158	5	£7.63	£281.65			90		187	£13.76	£295.34	96	23		68		
5.4	158	5	£7.63	£281.65			90		188	£13.76	£295.00	96	24		68		
5.5	158	5	£11.86	£285.95			90		189	£13.97	£287.44	96	25		68		
5.6	158	5	£11.86	£285.95			90		189	£13.97	£287.44	96	25		68		
6.1	68	4	£7.00	£350.00					68						68		
6.2	68	4	£7.00	£350.00					68						68		
6.3	68	4	£7.15	£350.00					68						68		
6.4	68	4	£7.15	£350.00					68						68		
6.5	68	4	£7.45	£360.00					68						68		
6.6	68	4	£7.45	£360.00					68						68		
7.1	68	4	£7.00	£350.00					68						68		
7.2	68	4	£7.00	£350.00					68						68		
7.3	68	4	£7.15	£350.00					68						68		
7.4	68	4	£7.15	£350.00					68						68		
7.5	68	4	£7.45	£360.00					68						68		
7.6	68	4	£7.45	£360.00					68						68		
8.1	68	4	£7.00	£350.00					68						68		
8.2	68	4	£7.00	£350.00					68						68		
8.3	68	4	£7.15	£350.00					68						68		
8.4	68	4	£7.15	£350.00					68						68		
8.5	68	4	£7.45	£360.00					68						68		
8.6	68	4	£7.45	£360.00					68						68		

* Average Prices are Weighted by Volume and Availability Hours and **do not** include indexation