

Operational Performance

February 2005

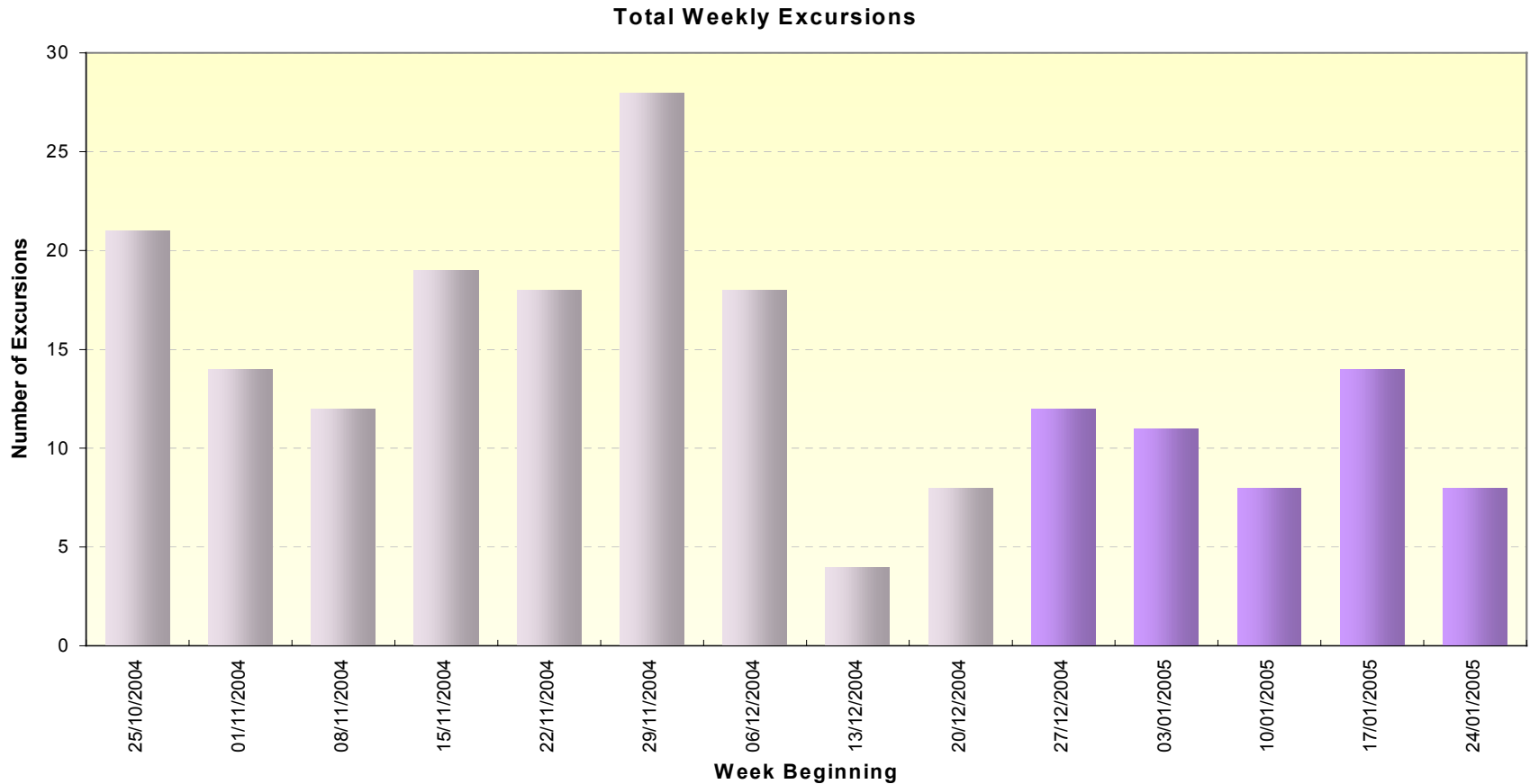
Richard Price

Operations and Trading

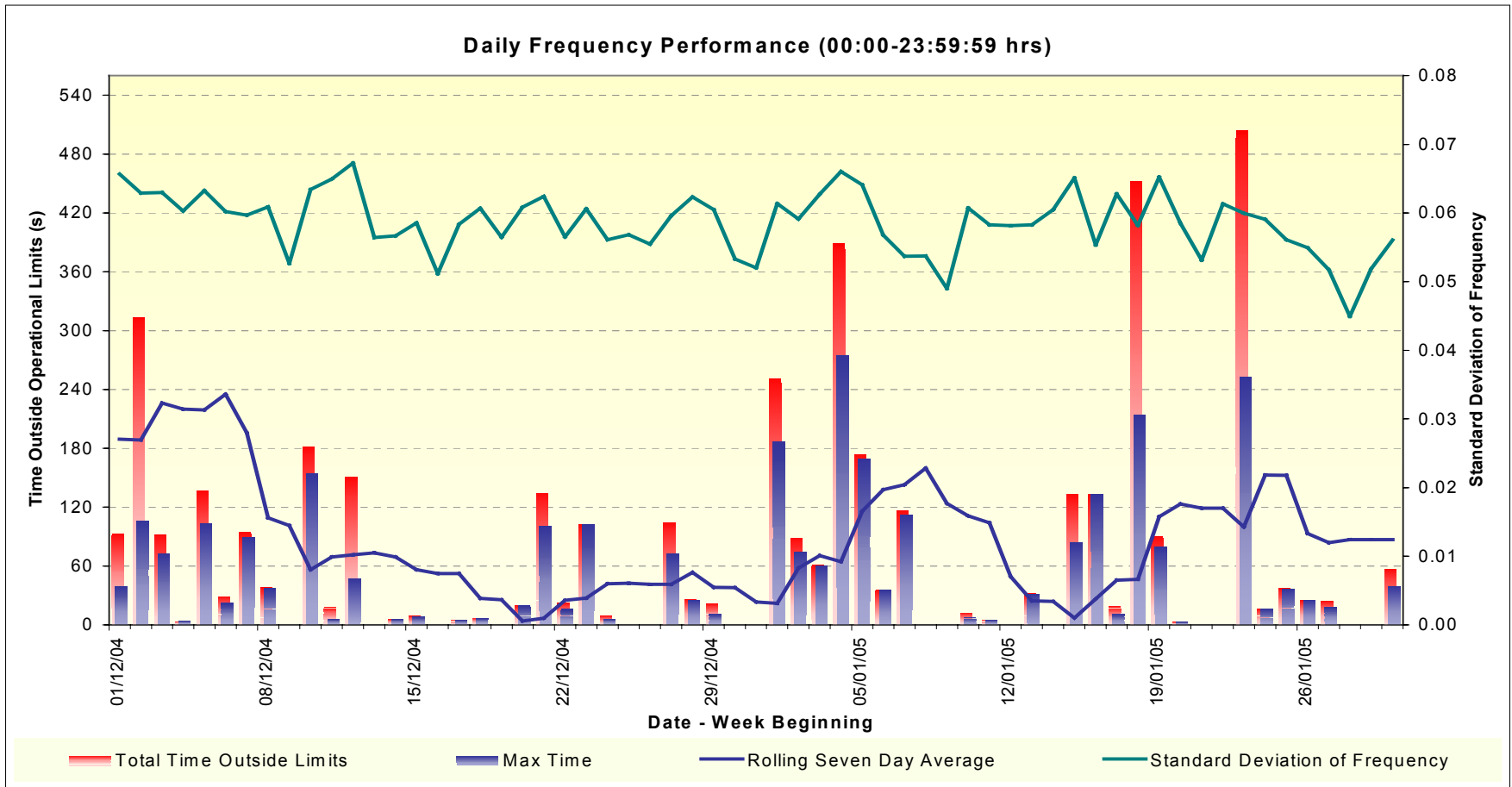
Agenda

- Frequency Performance inc. excursion 4 Jan
- Other Operational Performance
- Generator Performance
- Recent Demand / Temperature correlation
- Demand profile for 3 minute silence

Frequency Performance Weekly Excursions



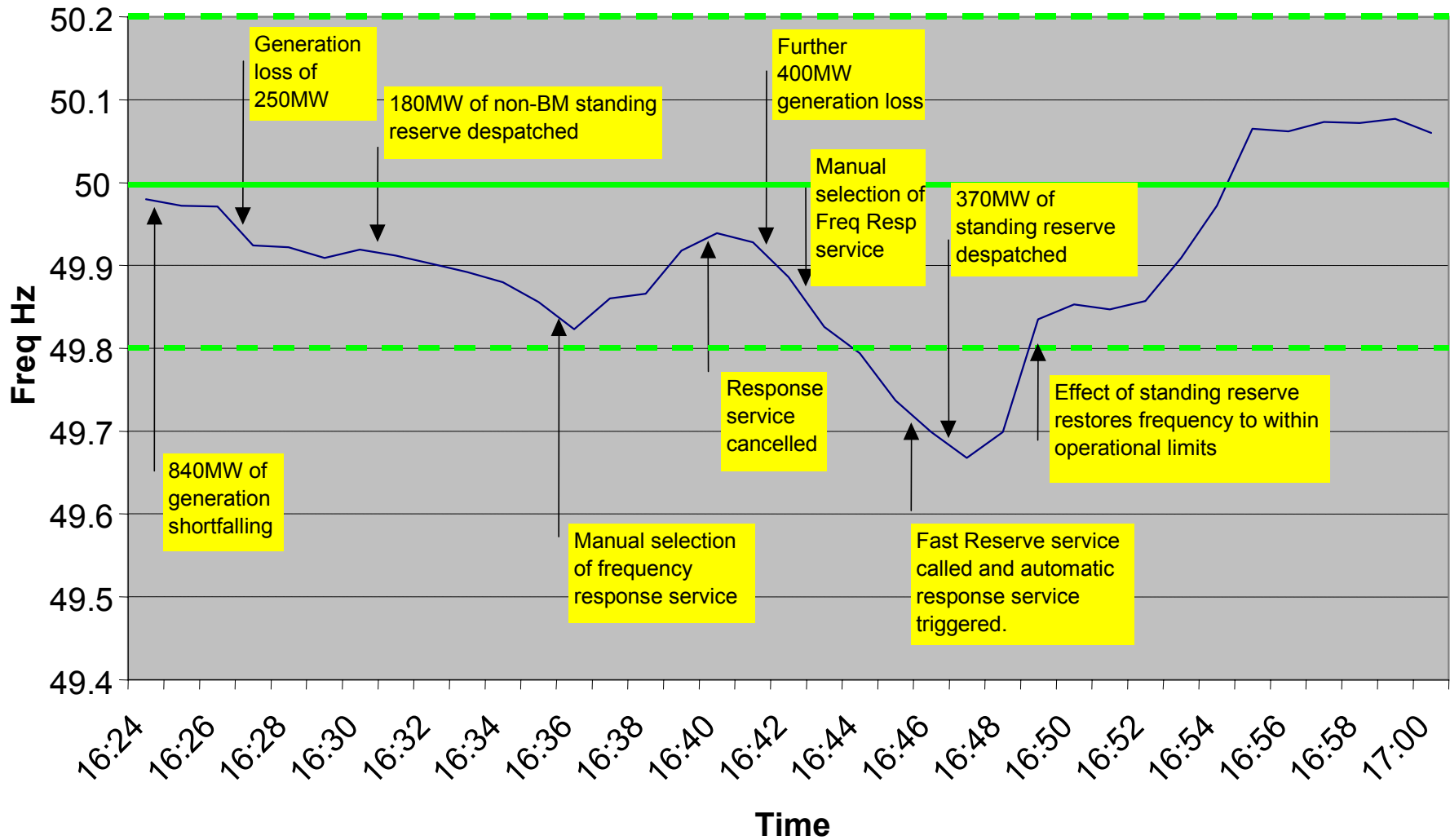
Daily Frequency Performance



Frequency Excursion - 4 January

- At around 16:30 in the lead up to the darkness peak, there was around 800MW of generation shortfalling against expected FPN levels.
- Between 16:30 and 16:45, a further 800MW of generation was lost from the system.
- 500MW of standing reserve was despatched to replace the lost generation
- Commercial frequency response services were activated manually and automatically via LF relay. System frequency reached a low of 49.657Hz at 16:47 (still well within statutory limits).
- At this point some standing reserve on 15 minutes notice had not yet arrived and so a fast reserve service was also used to arrest the frequency fall.
- The combined effect of all the corrective actions recovered the frequency to 49.8Hz by 16:49 and to 50Hz by 16:55.

Frequency Trace - Tuesday 4 January 2005 16:00-17:00



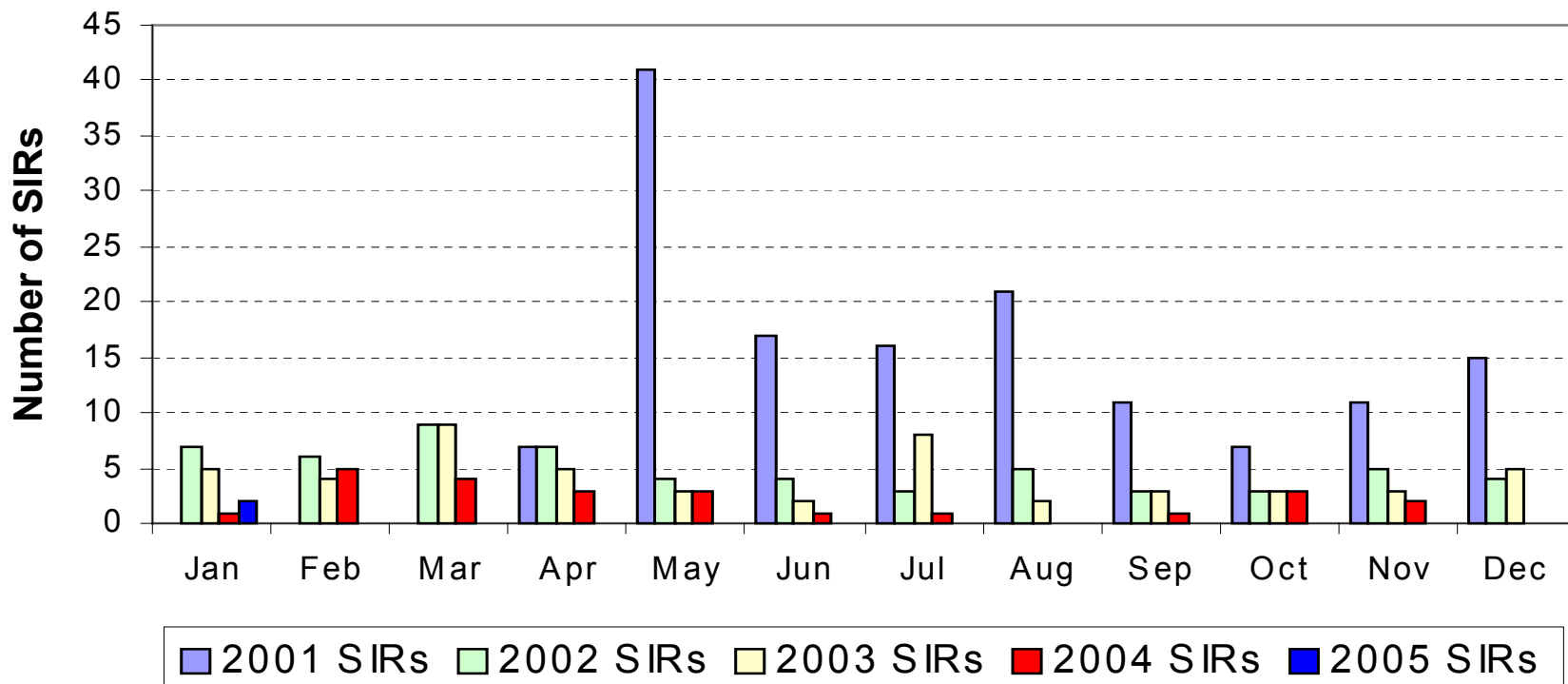
Other Operational Performance

- Self despatch CCL following performance generally good since last forum. This has contributed to the good frequency performance.
- Most plant on outage returned in December and availability levels have generally been high over the past two months. Winter peak demand 13 Dec 53.8GW so far.
- 2 SIRs since last Forum. None in December, two in January.
- No System Warnings issued in December and January. One in February so far - Tue 8 Feb. Previous one was 14 October 2004.
- No PGBTs agreed since last Forum. Last one was 18 Nov.

Generator Performance (1)

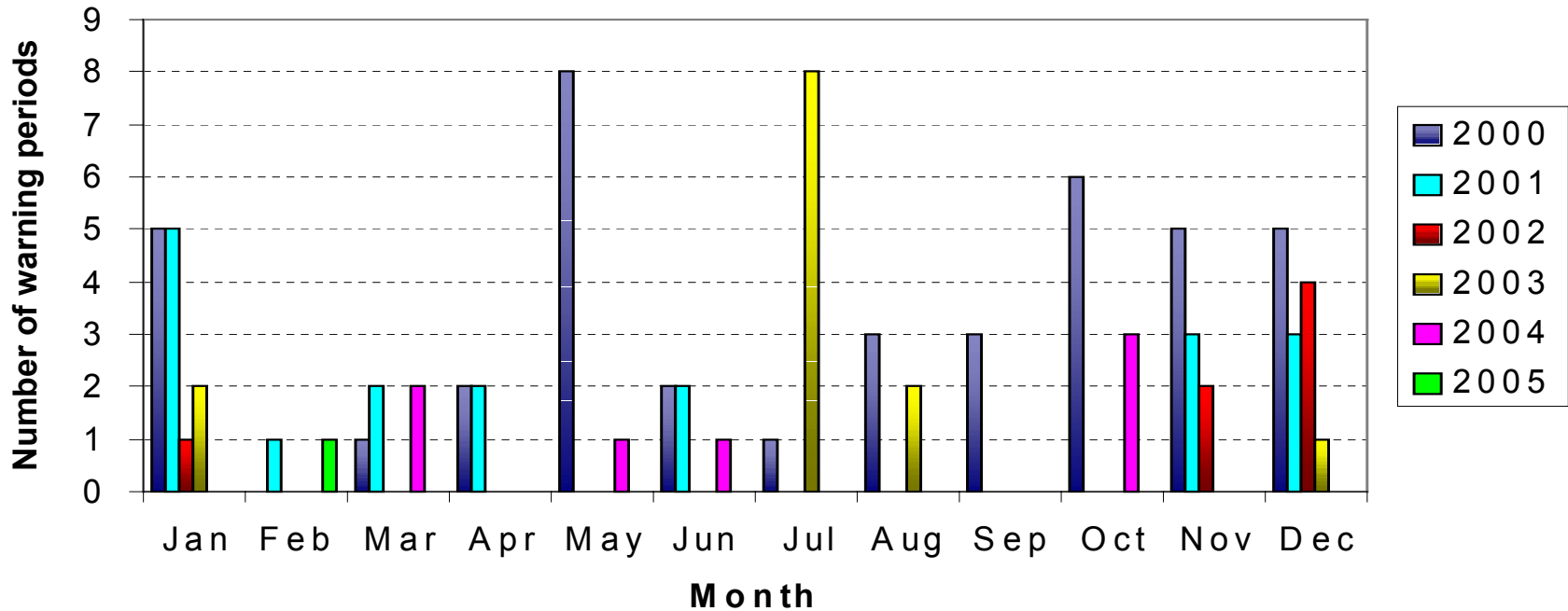
SIR performance

Number of SIRs requested



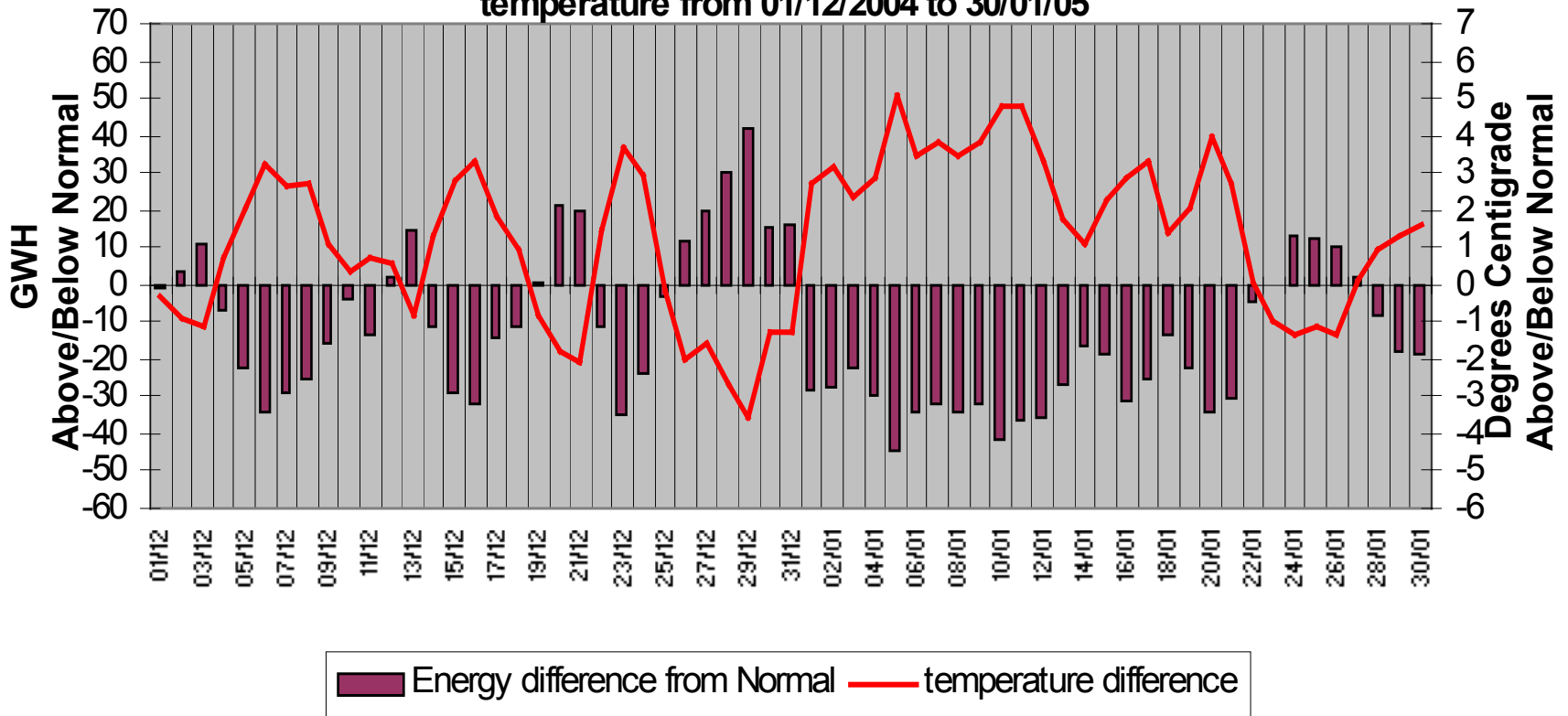
System Warnings

NGC System Warnings - Inadequate System Margin or High Risk of Demand Reduction

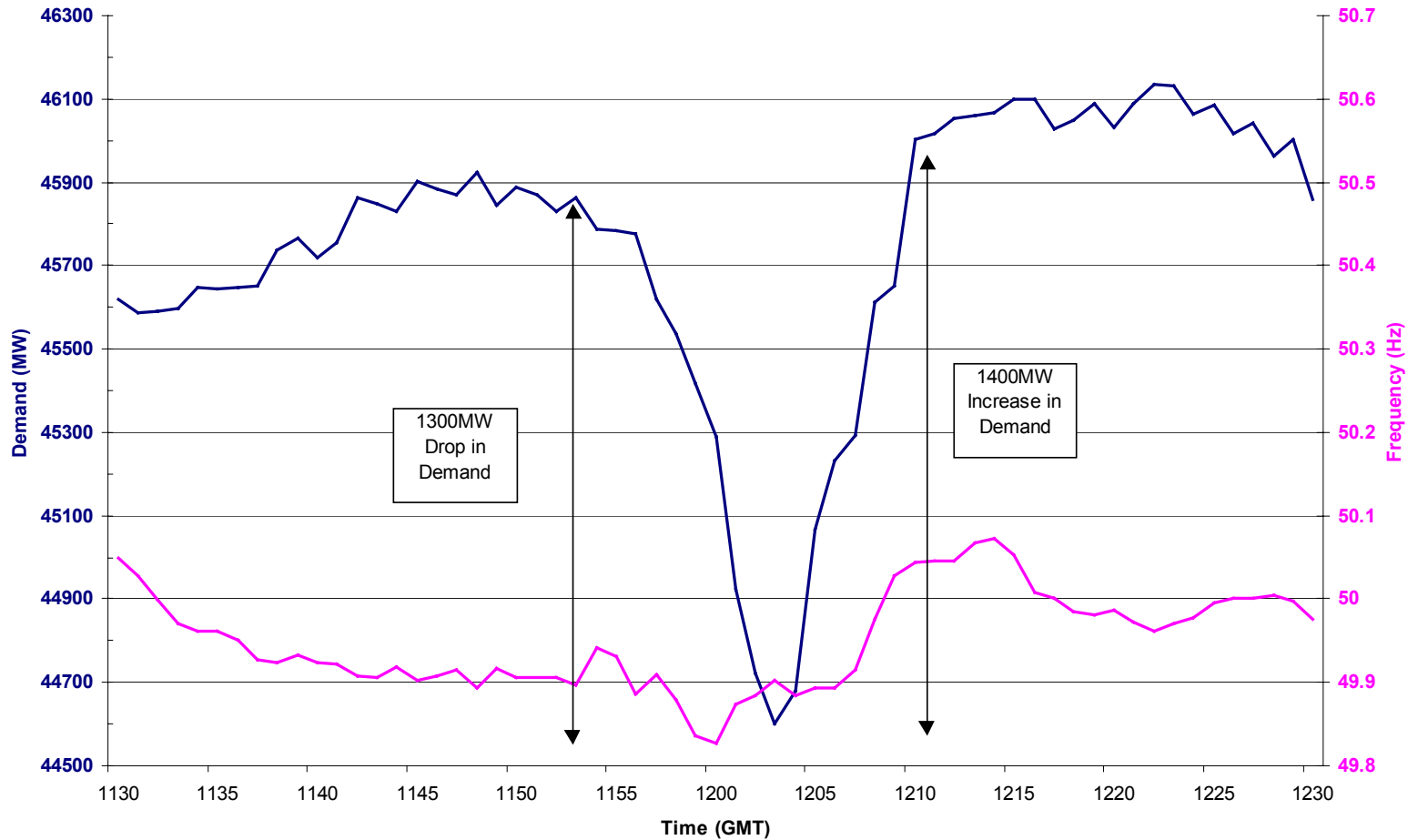


Recent Demand / Temperature correlation

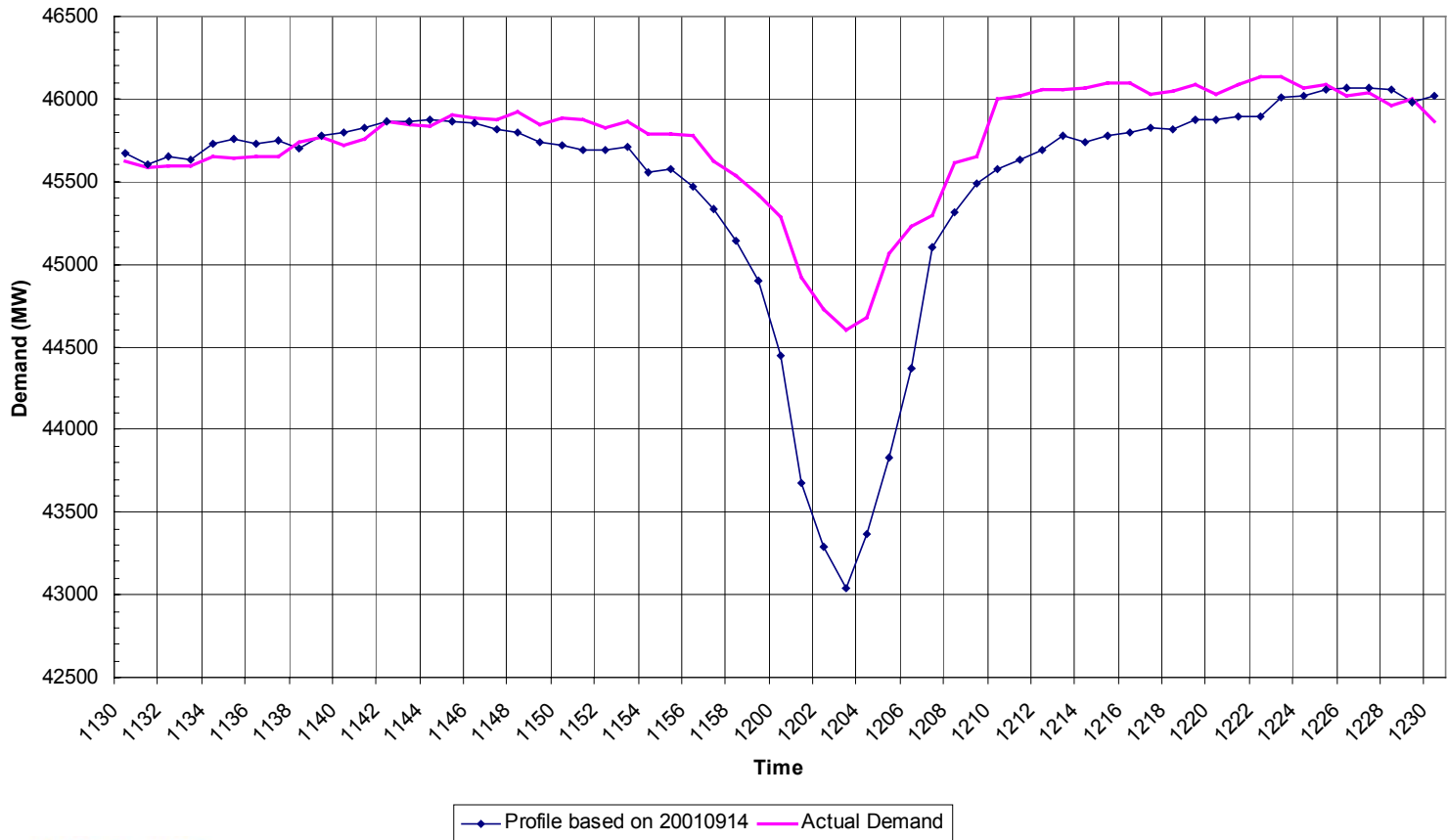
Daily comparison between normal & actual energy requirements and temperature from 01/12/2004 to 30/01/05



Three minutes silence for Boxing Day Tsunami Disaster 5th January 2005



Three minutes silence for Boxing Day Tsunami Disaster 5th January 2005 Comparison with Superimposed 14th September 2001





Any questions?