

# Operational Update



Jo Faulkner, Balancing Services Manager

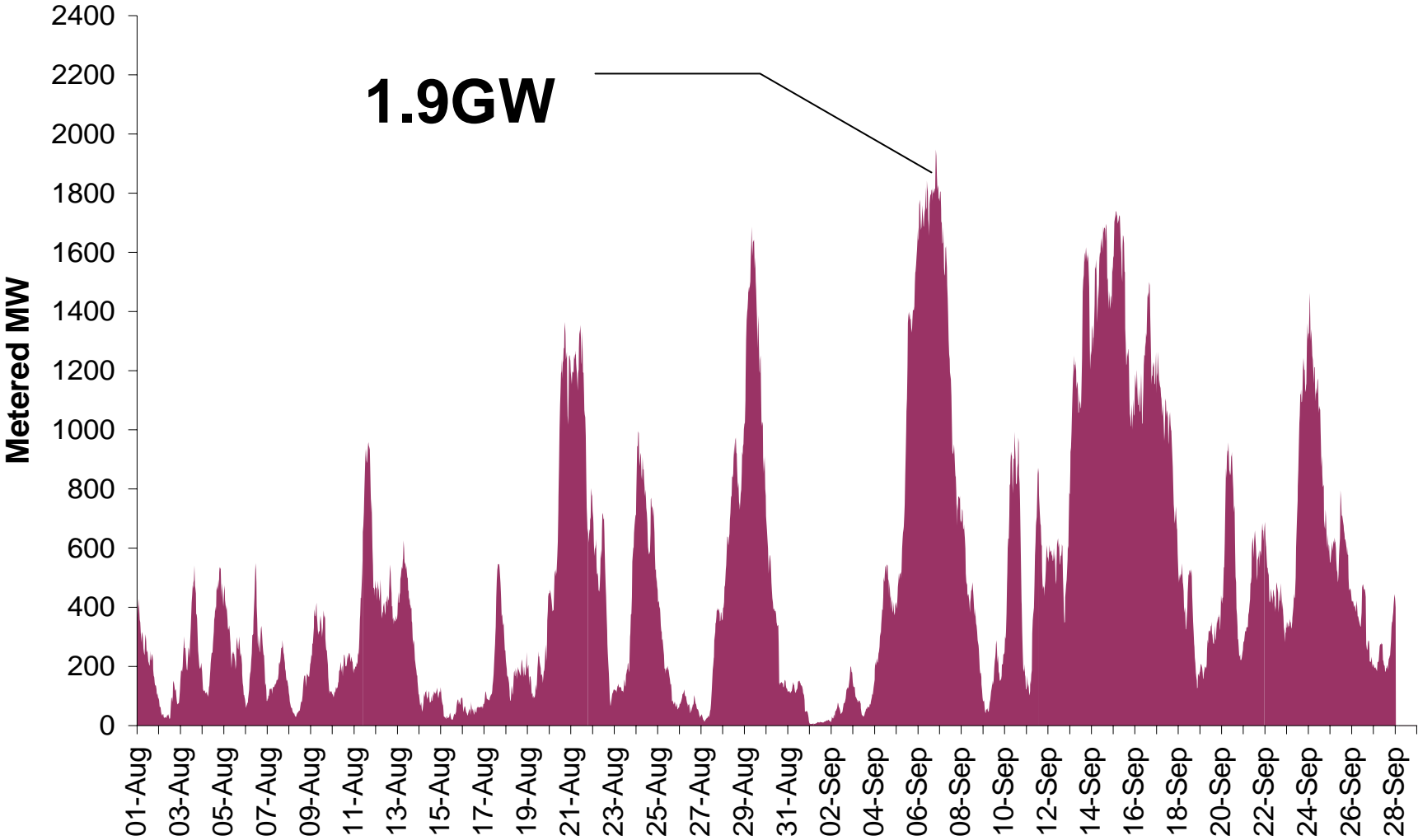
Operational Forum, October 2010

# Agenda

---

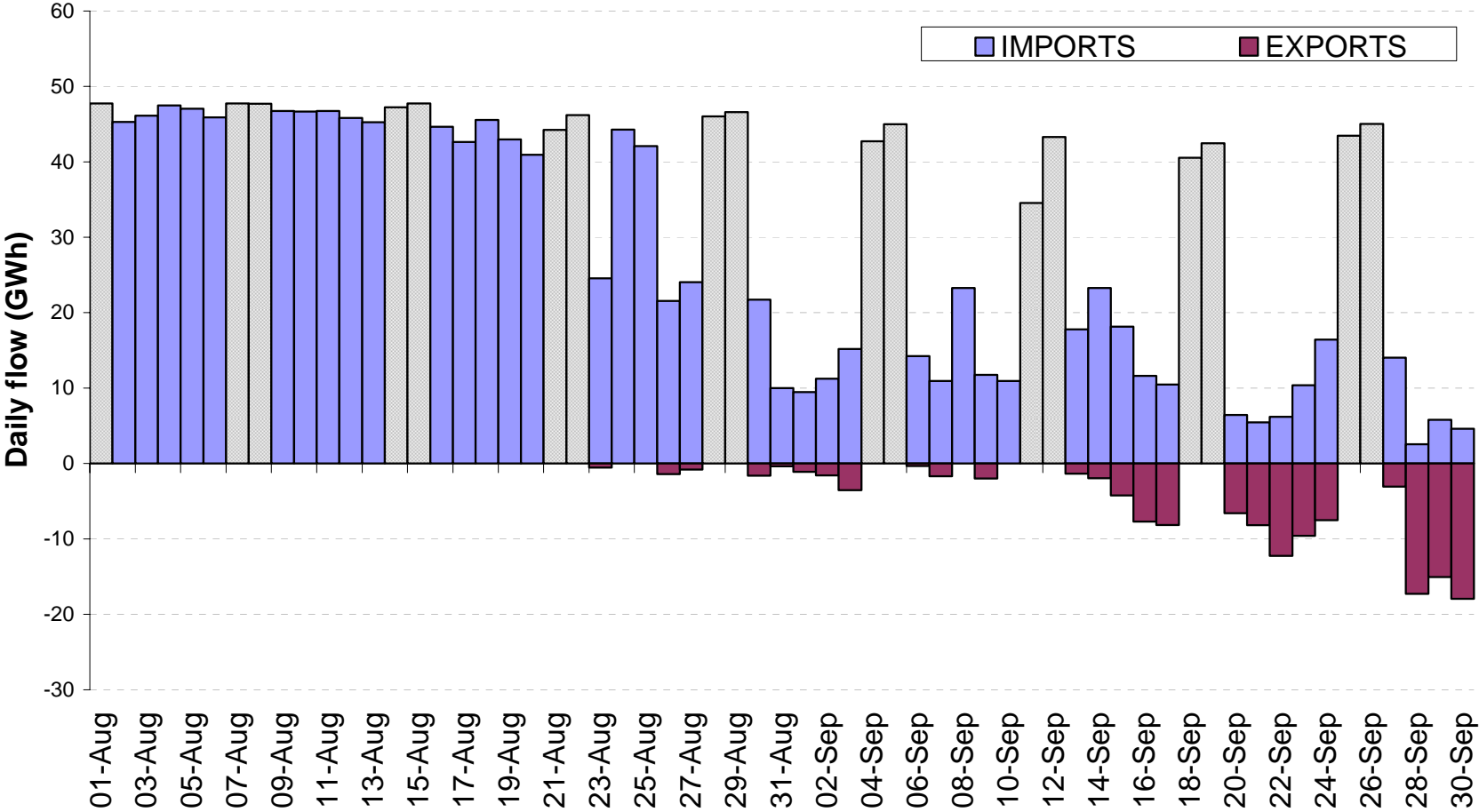
- Highest Ever Wind Output
- French Interconnector
- Winter Outlook
- SO Cost Update

# Metered Wind Output



# French Interconnector Flows – August/September 2010

Flows over the French English Interconnector August - September 2010



# Winter Outlook Consultation 2010/11



## Winter Outlook 2010/11 Timeline

---

- Winter Outlook Consultation – Published 1<sup>st</sup> July
- Consultation Responses – Received 23<sup>rd</sup> August
  - 4 Consultation responses received
- Ofgem Winter Outlook Consultation Seminar – 28<sup>th</sup> September
- Winter Outlook Report – Published 7<sup>th</sup> October

# Electricity – Potential upsides – New CCGTs

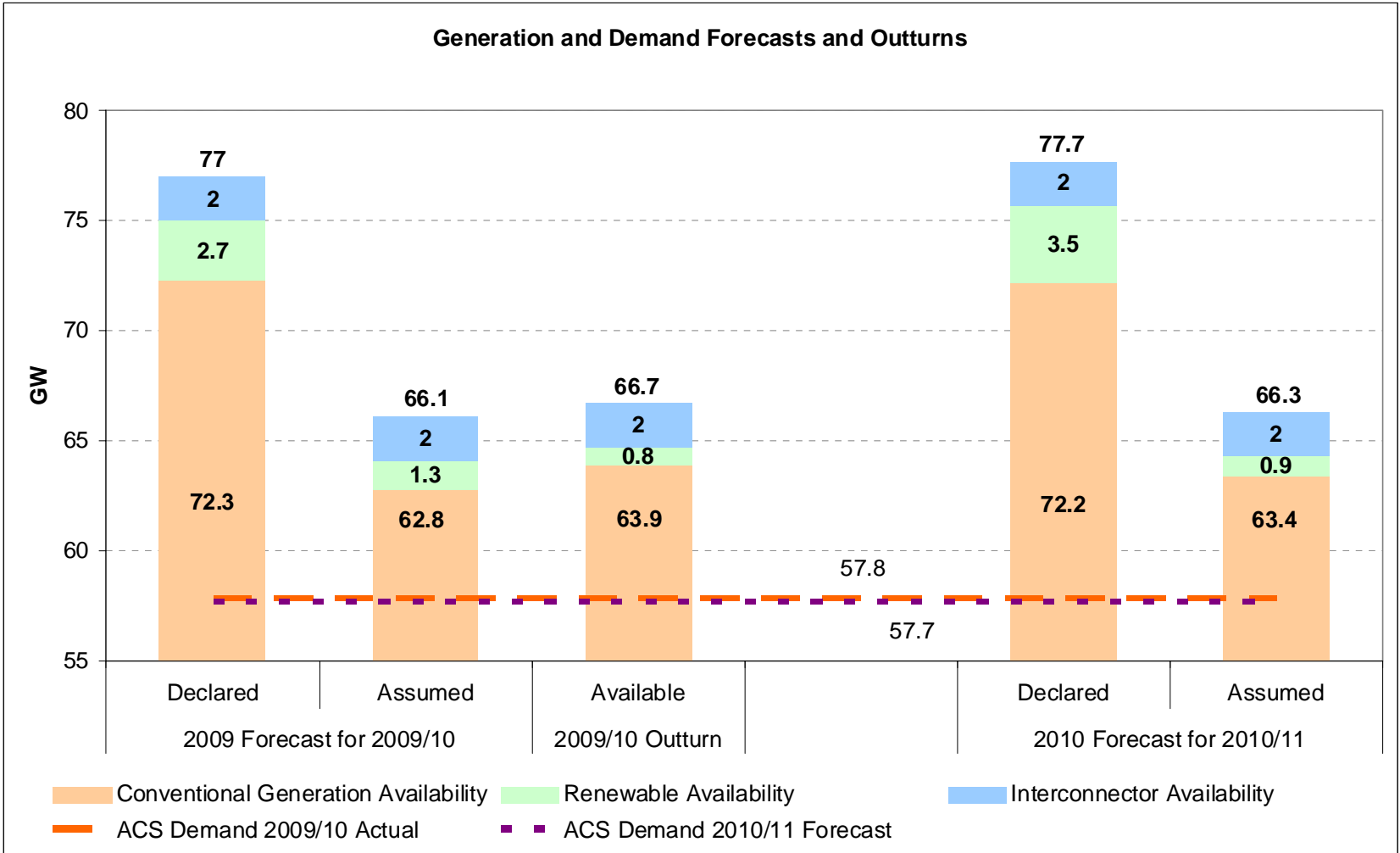
- Staythorpe
  - 1700MW
- Severn Power
  - 850MW
- Grain units 6,7 and 8
  - 1200 MW
- West Burton B
  - 1300 MW



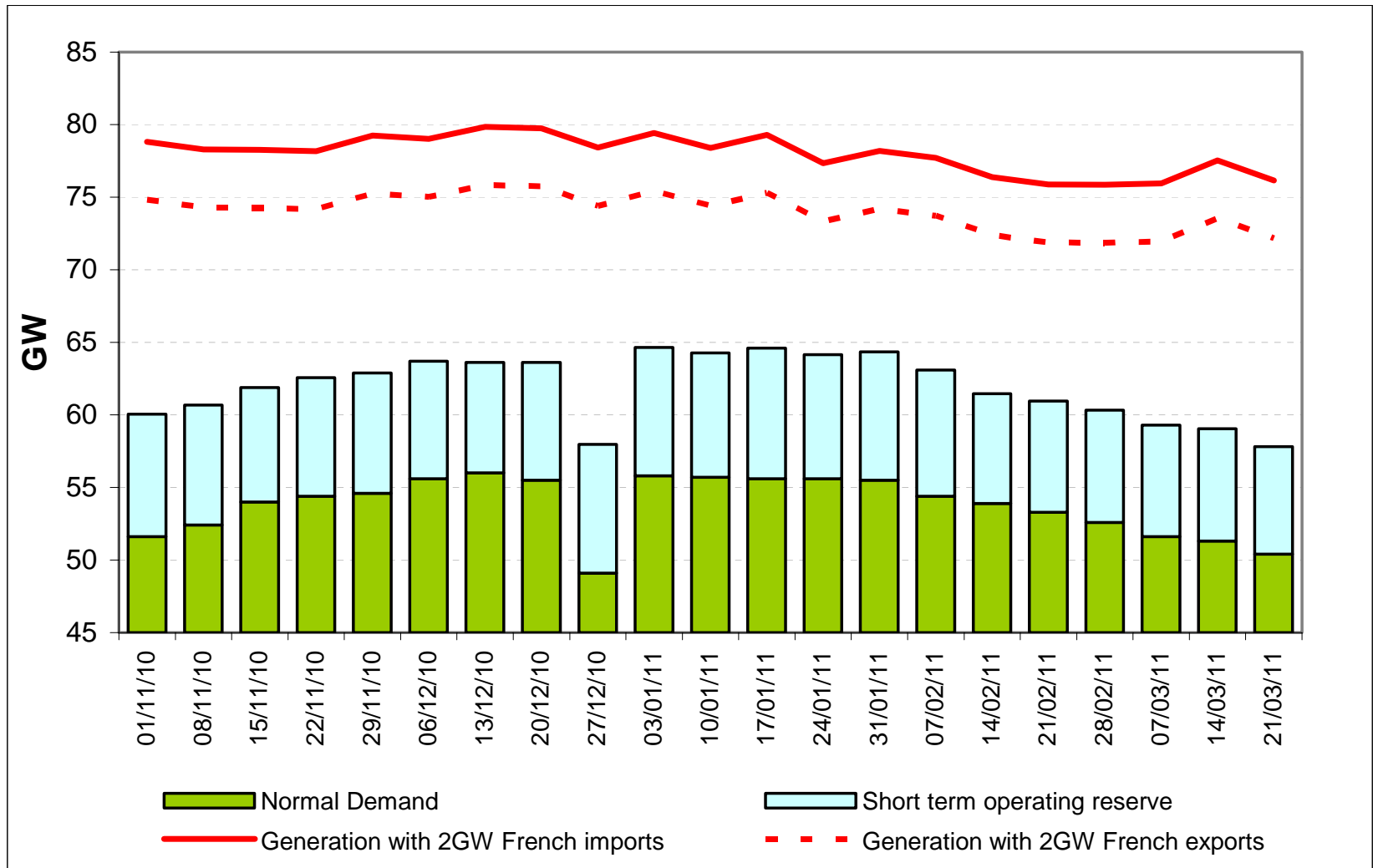
Severn Power

# Electricity – Generation and Demand nationalgrid

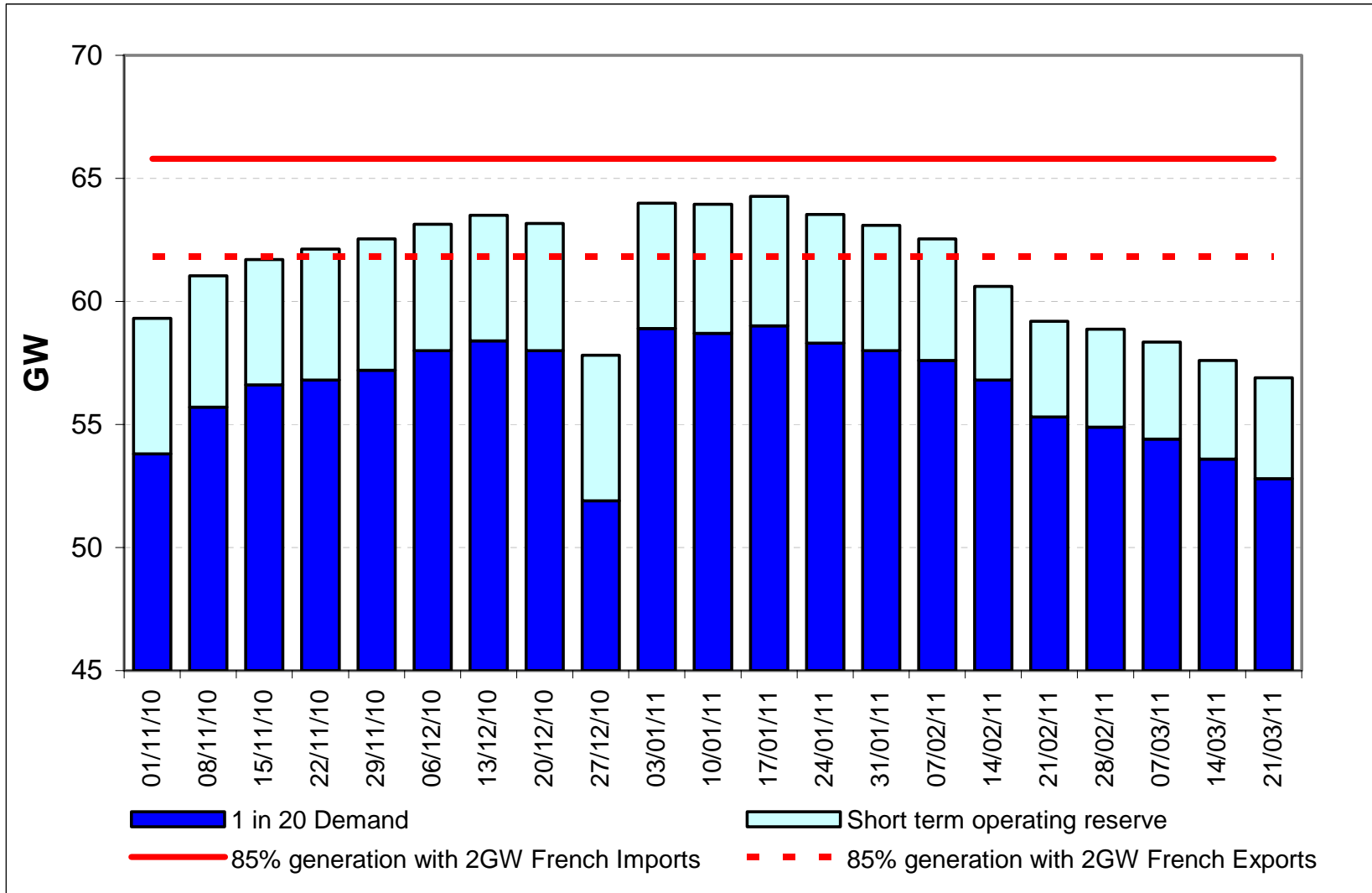
THE POWER OF ACTION



# Electricity - Normal Demand and Notified Generation Availability



# Electricity - 1 in 20 Demand and Assumed Generation Availability



# Winter Outlook 2010/11 - Summary

---

## ■ Gas

- Peak day demand forecast is higher than last year
- Forecast non storage supplies are higher than last year with potential upsides in LNG
- Storage deliverability is reduced due to less LNGS and a review of the actual deliverability from all storage sites
- Forecast spreads between Gas or Coal as base load fuel source for Electricity Generation is very small

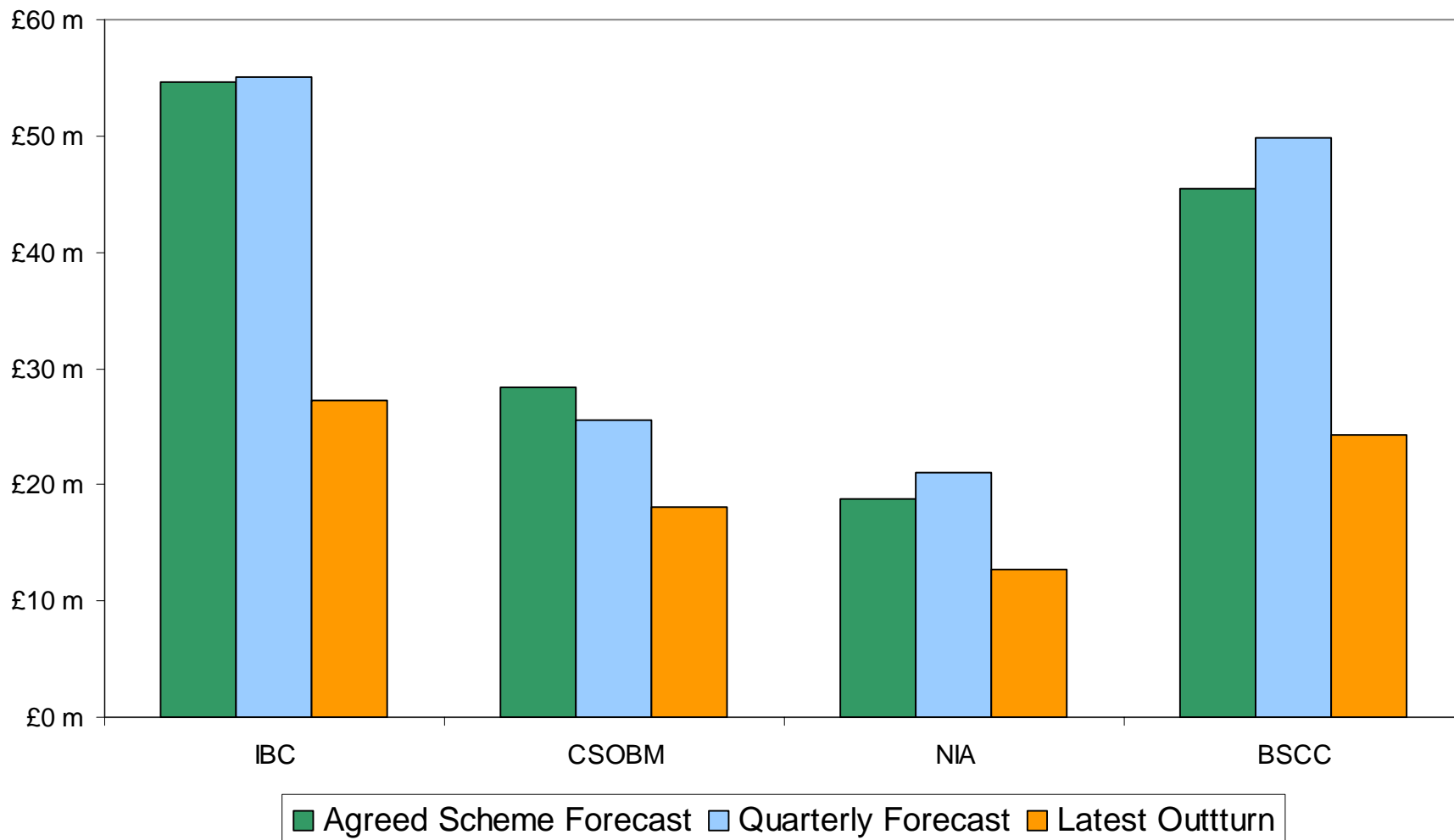
## ■ Electricity

- Average Cold Spell Demand forecast is the same as last year
  - Notified and Assumed Generation availability is close to last years figures
  - Large potential upside in new CCGT commissioning during the winter
- **Even with the uncertainties the forecast indicate the winter should be manageable**

# SO Cost Update

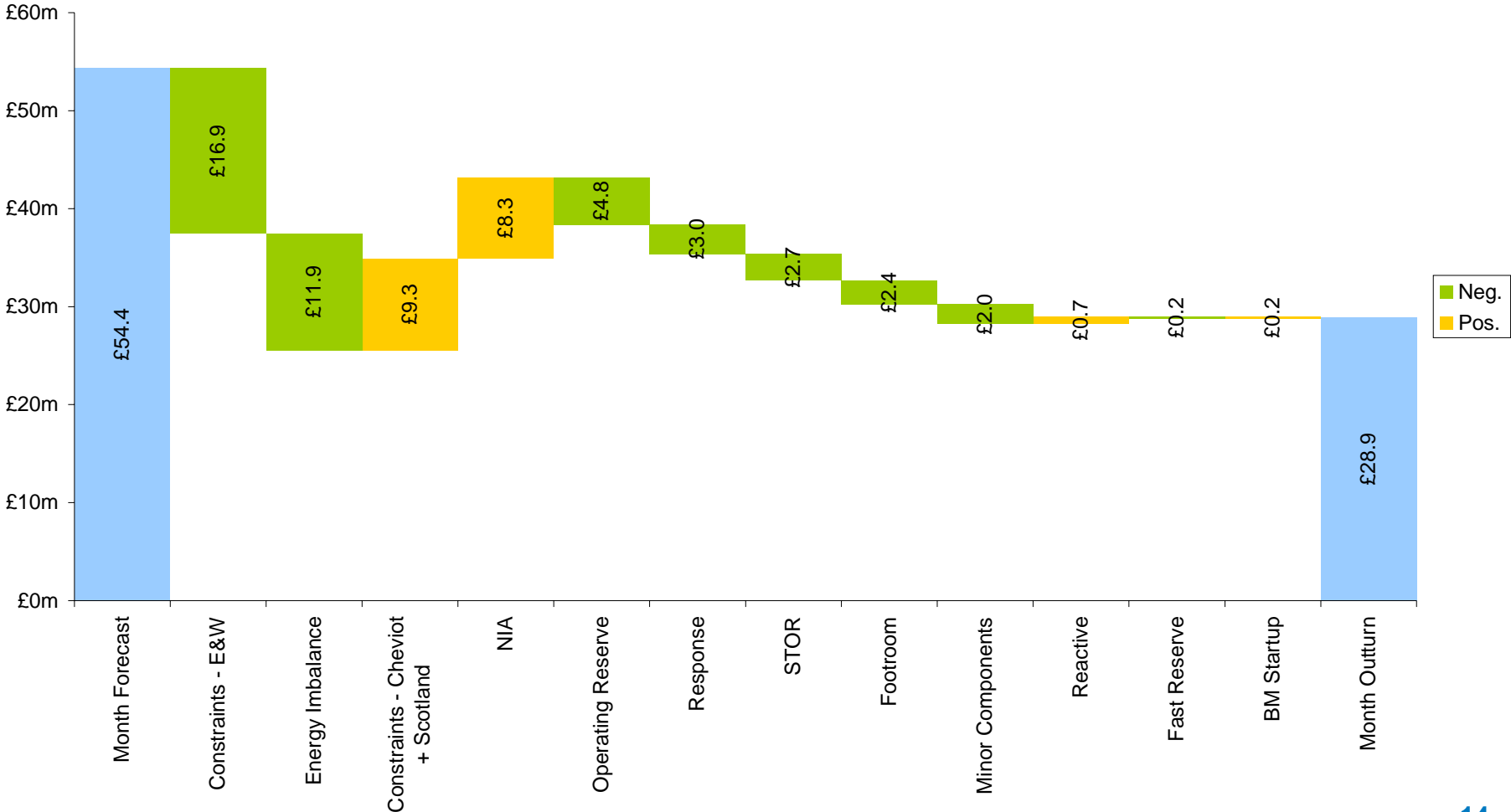


# IBC component comparison – August 2010



# Variance in August

August 2010 vs Forecast



# Reforecast

---

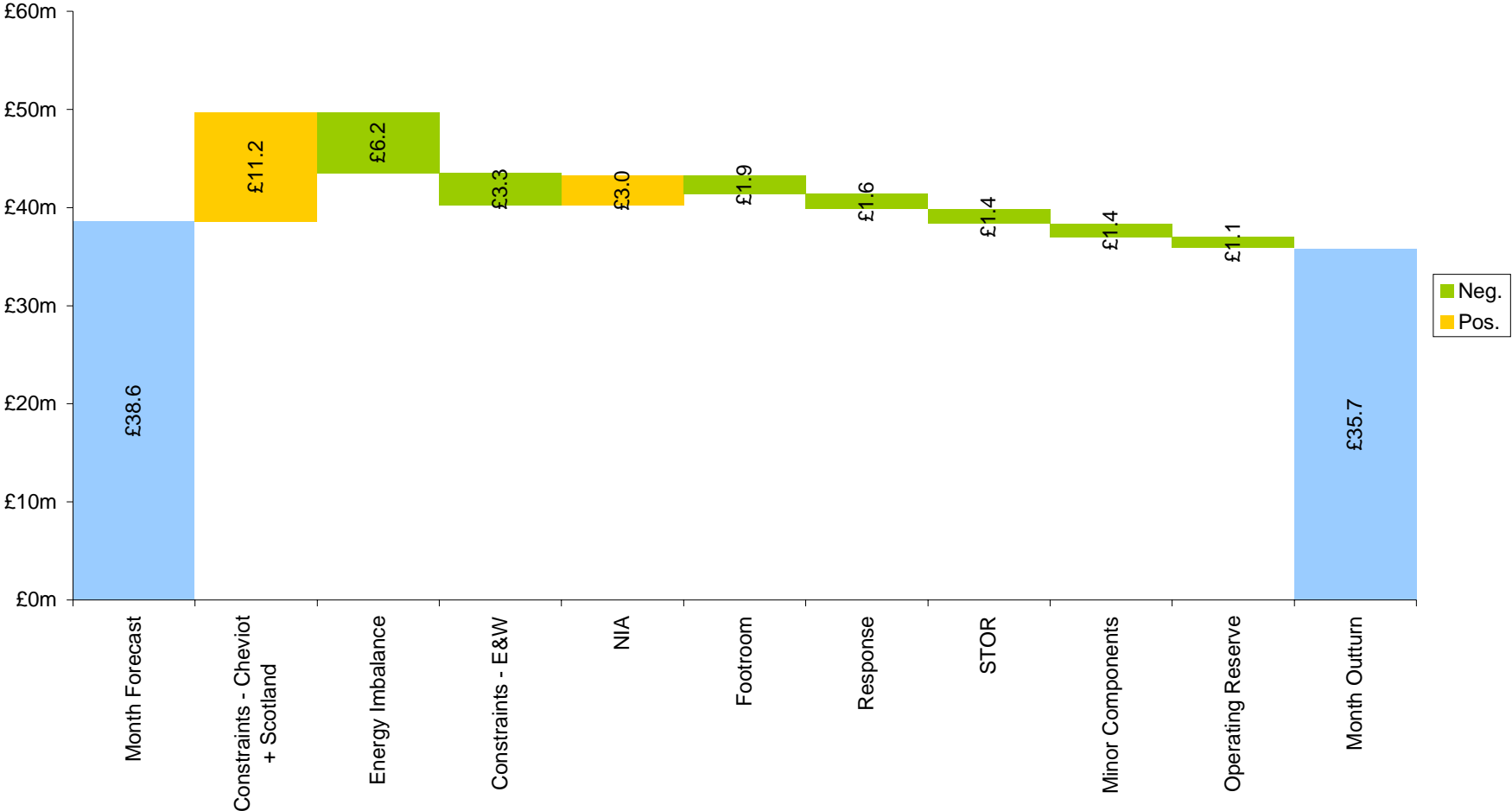
- A revised forecast was made for 2010/11 commencing from 1<sup>st</sup> September
  - EW Constraints now expected to be £28m lower based on updated price differentials between the UK and Continental markets
  - Outages in Scotland extended increasing costs some £12m
  - Other changes due to updated prices
- New forecast is for an IBC of 424m

# IBC component comparison – September 2010

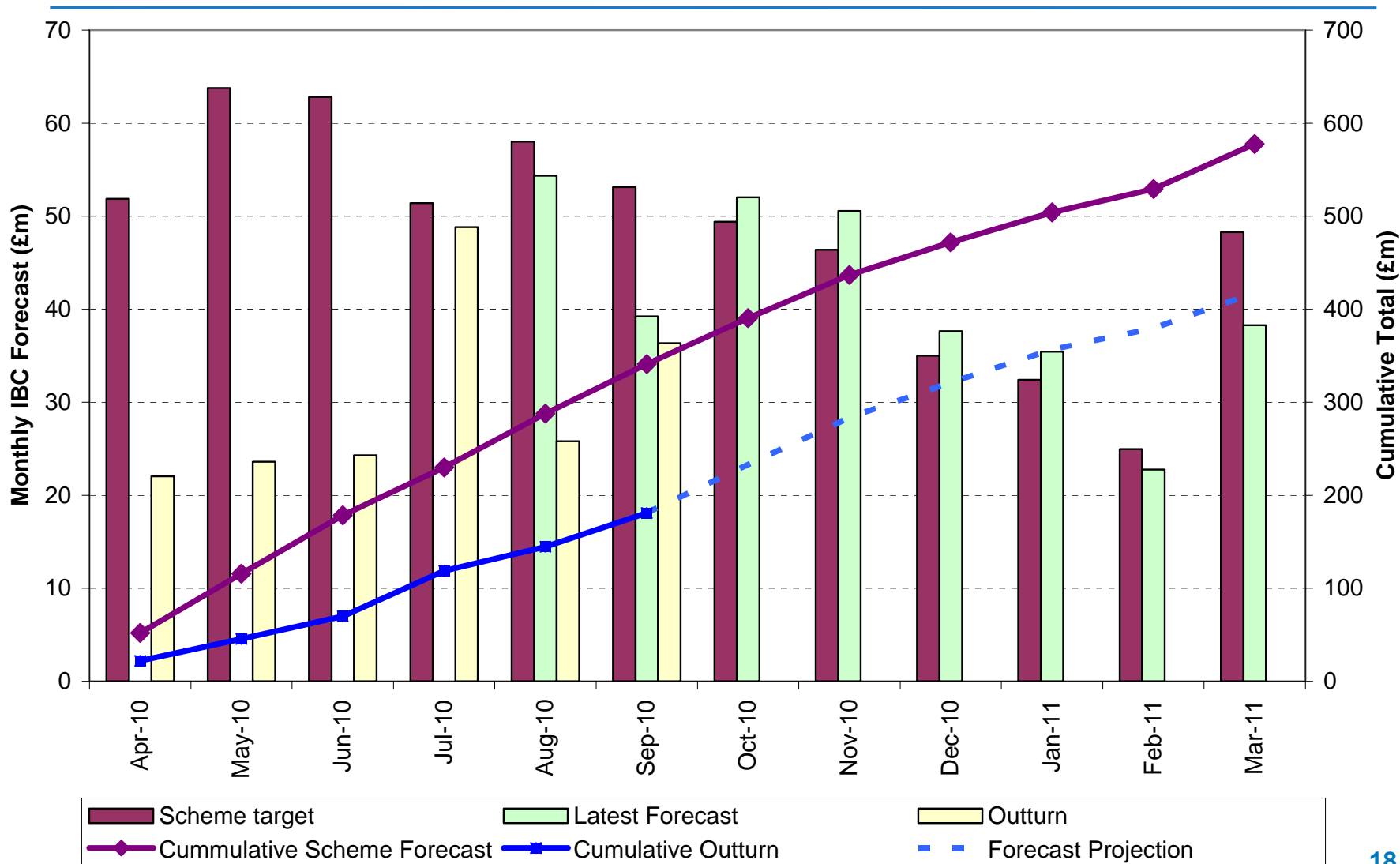


# Variance in September

September 2010 vs September Forecast

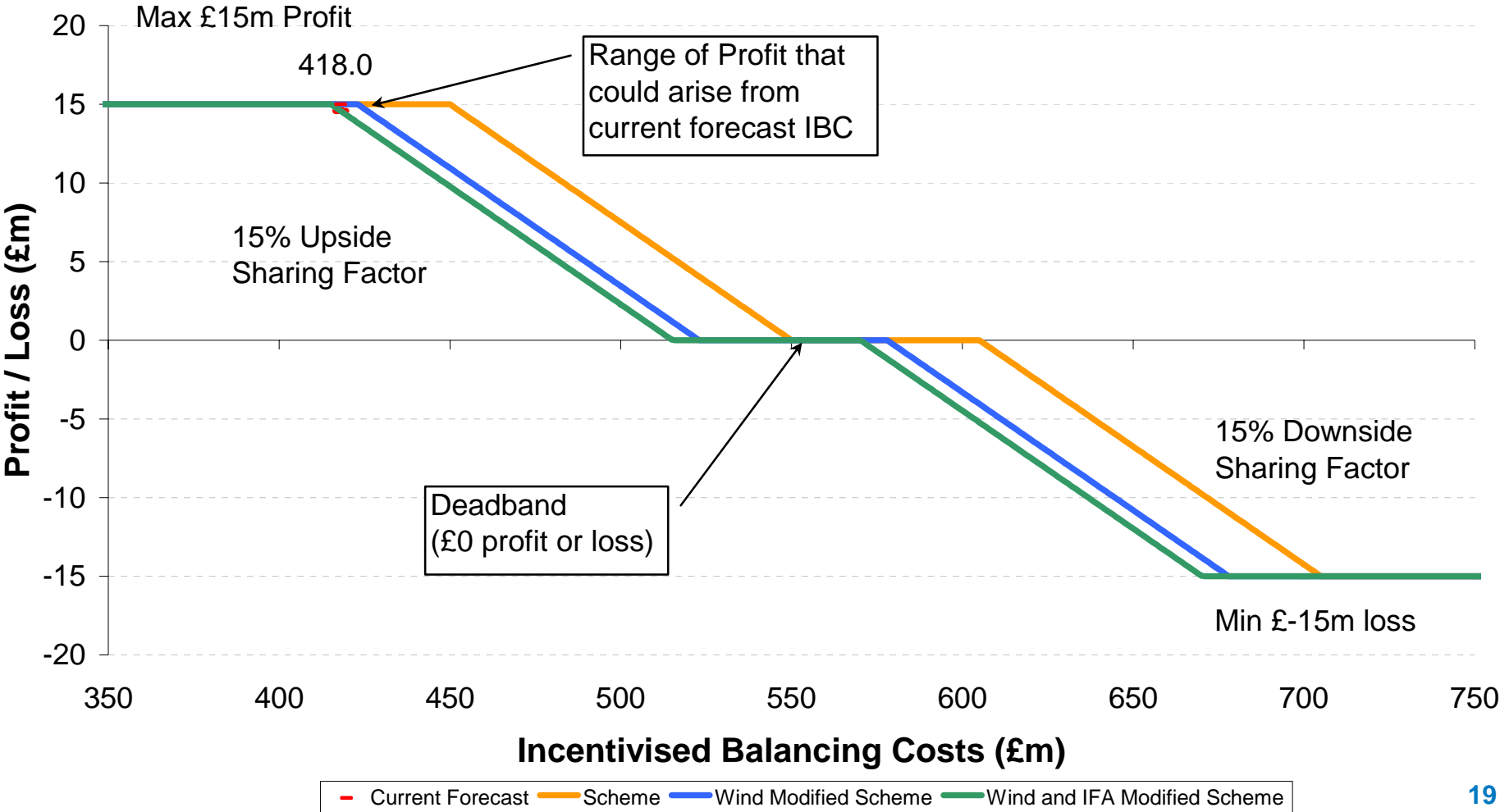


# Monthly IBC 2010/11 forecasts and outturn



# Forecast BSIS 2010/11

## 2010/11 Balancing Services Incentive Scheme



# Forecast BSUoS 2010/11

- Current BSUoS charge forecast for 2010/11 £1.23/MWh (Range £1.10 - £1.37)

