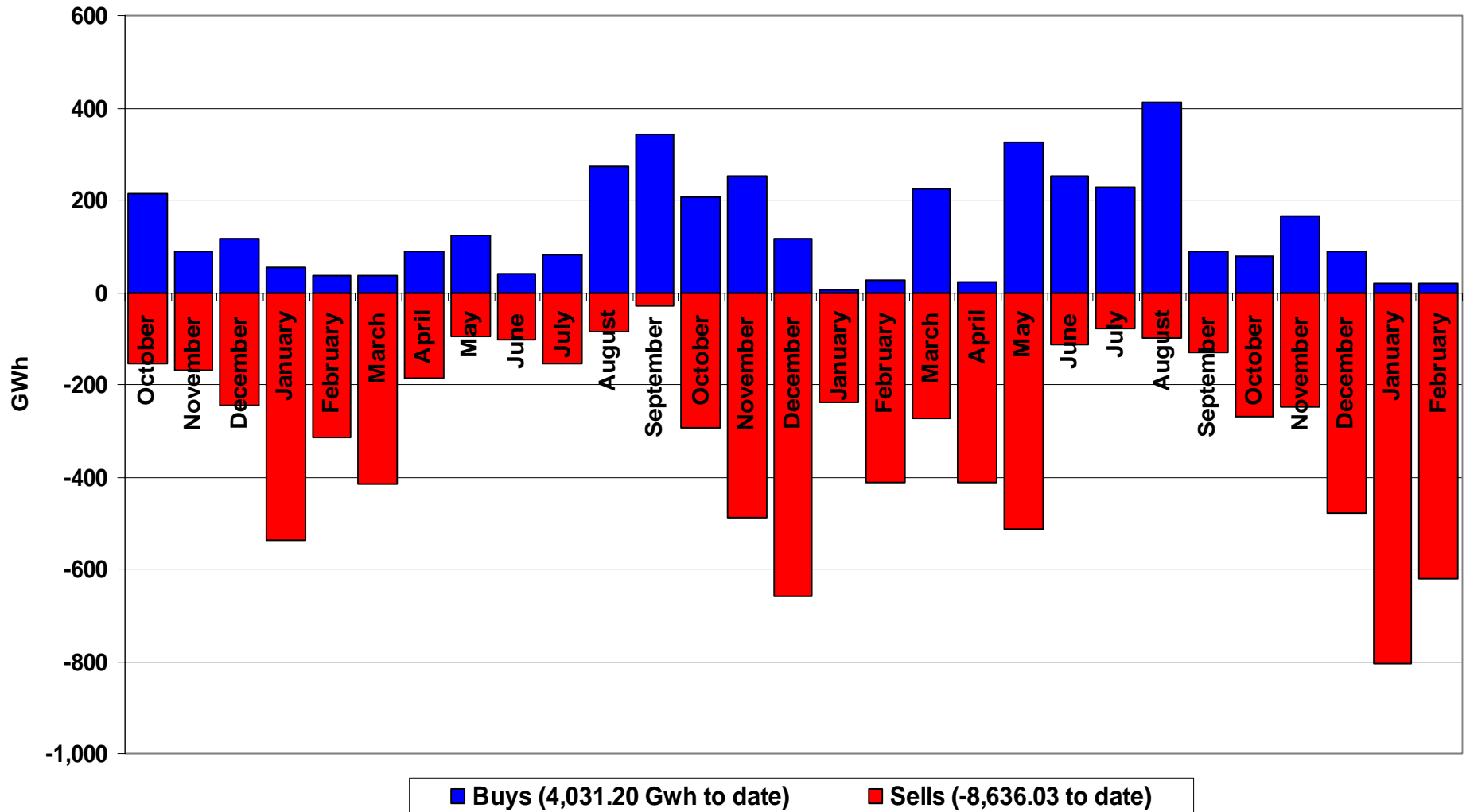


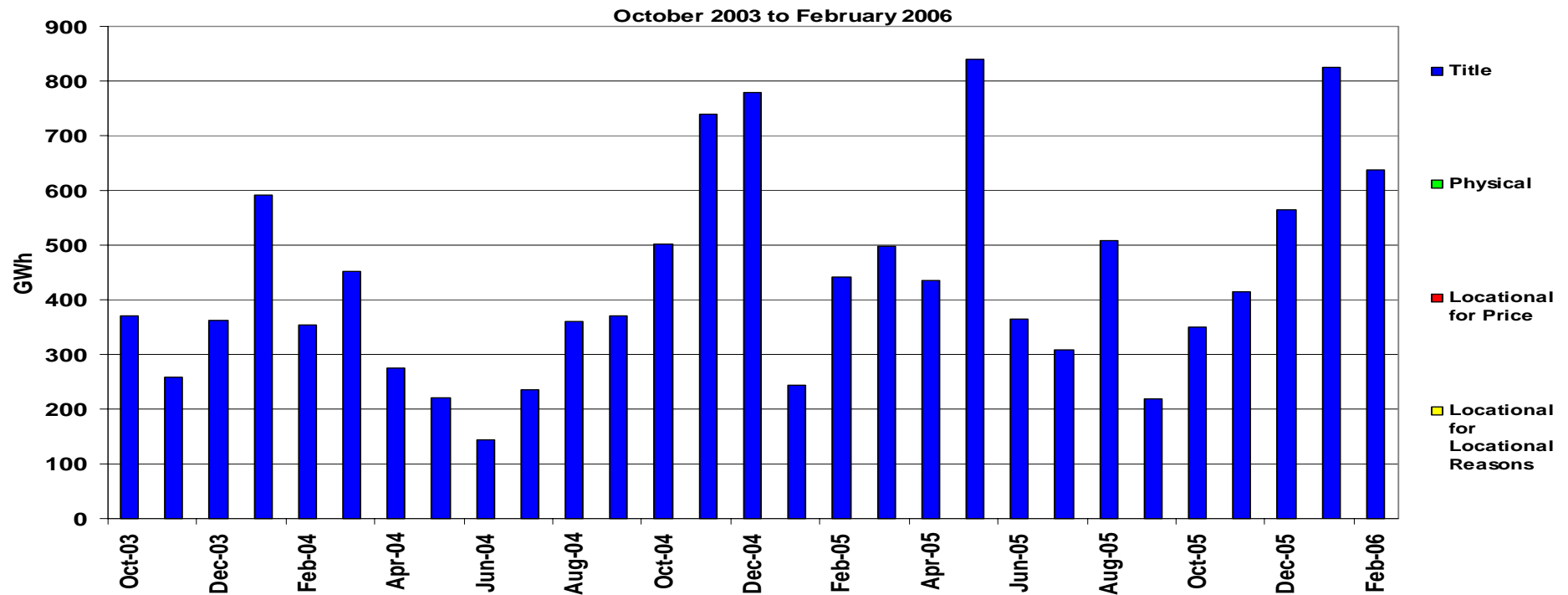
Performance of the Energy Regime

February 2006

Transporter Energy Traded Per Month



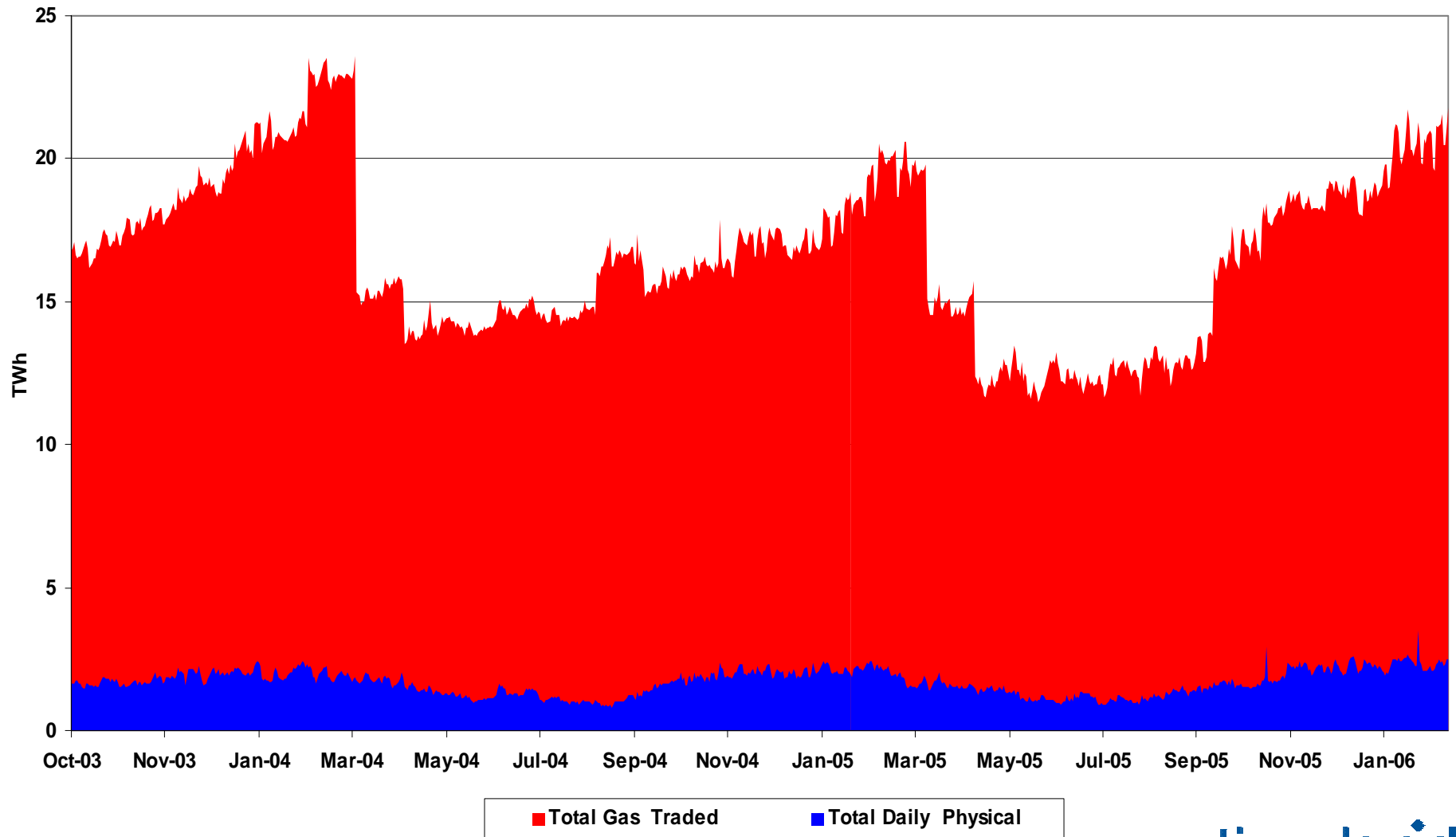
Monthly Energy Traded by Transporter on the OCM



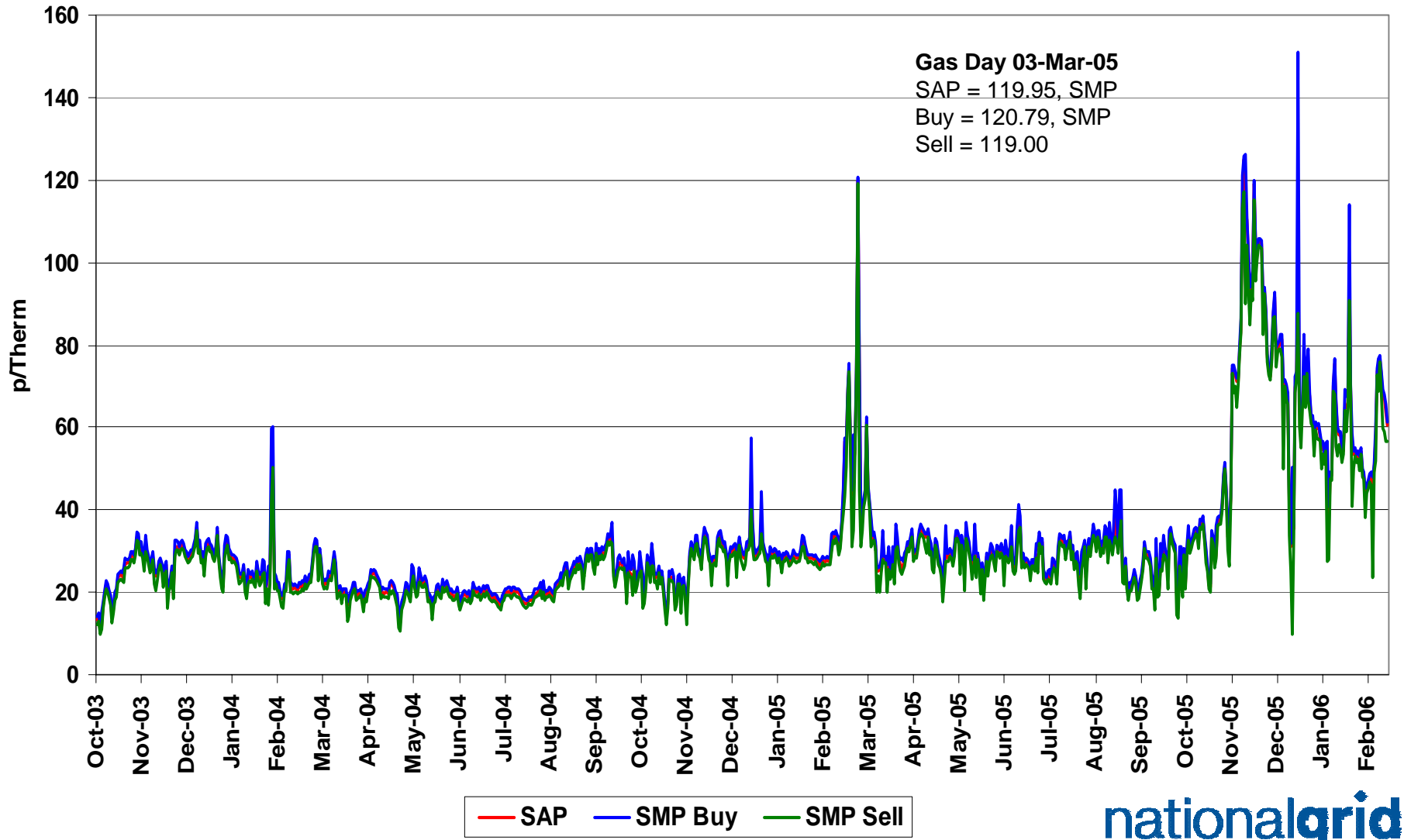
March all Markets = 497.49 Gwh
 April all Markets = 435.42 Gwh
 May all Markets = 840.56 Gwh
 June all Markets = 364.23 Gwh
 July all Markets = 308.78 Gwh
 August all Markets = 508.24 Gwh

September all Markets = 218.40 Gwh
 October all Markets = 350.19 Gwh
 November all Markets = 414.58 Gwh
 December all Markets = 564.95 Gwh
 January all Markets = 825.17 Gwh
 February all Markets = 638.34 Gwh

NBP Gas Trades

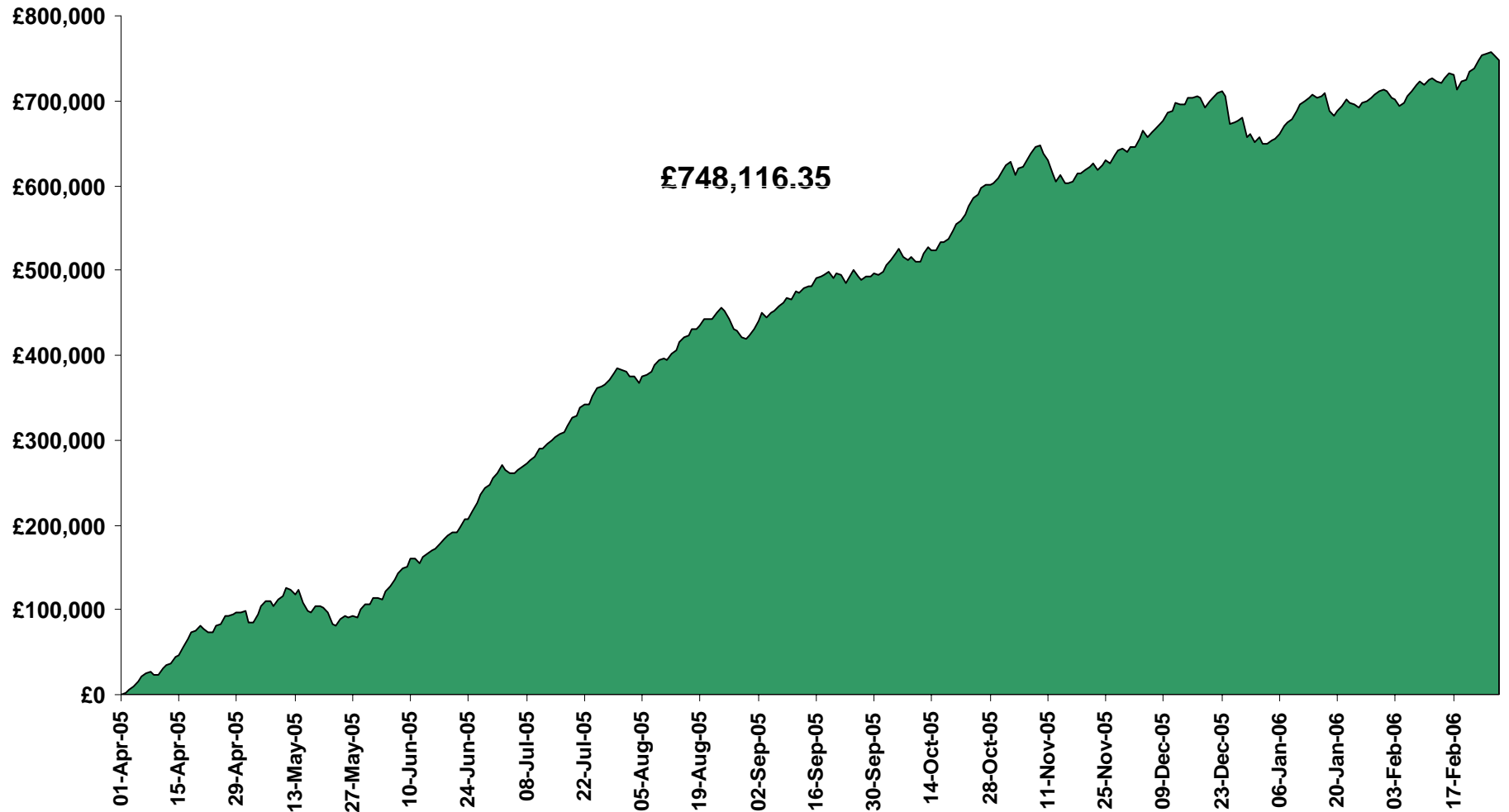


Gas Prices

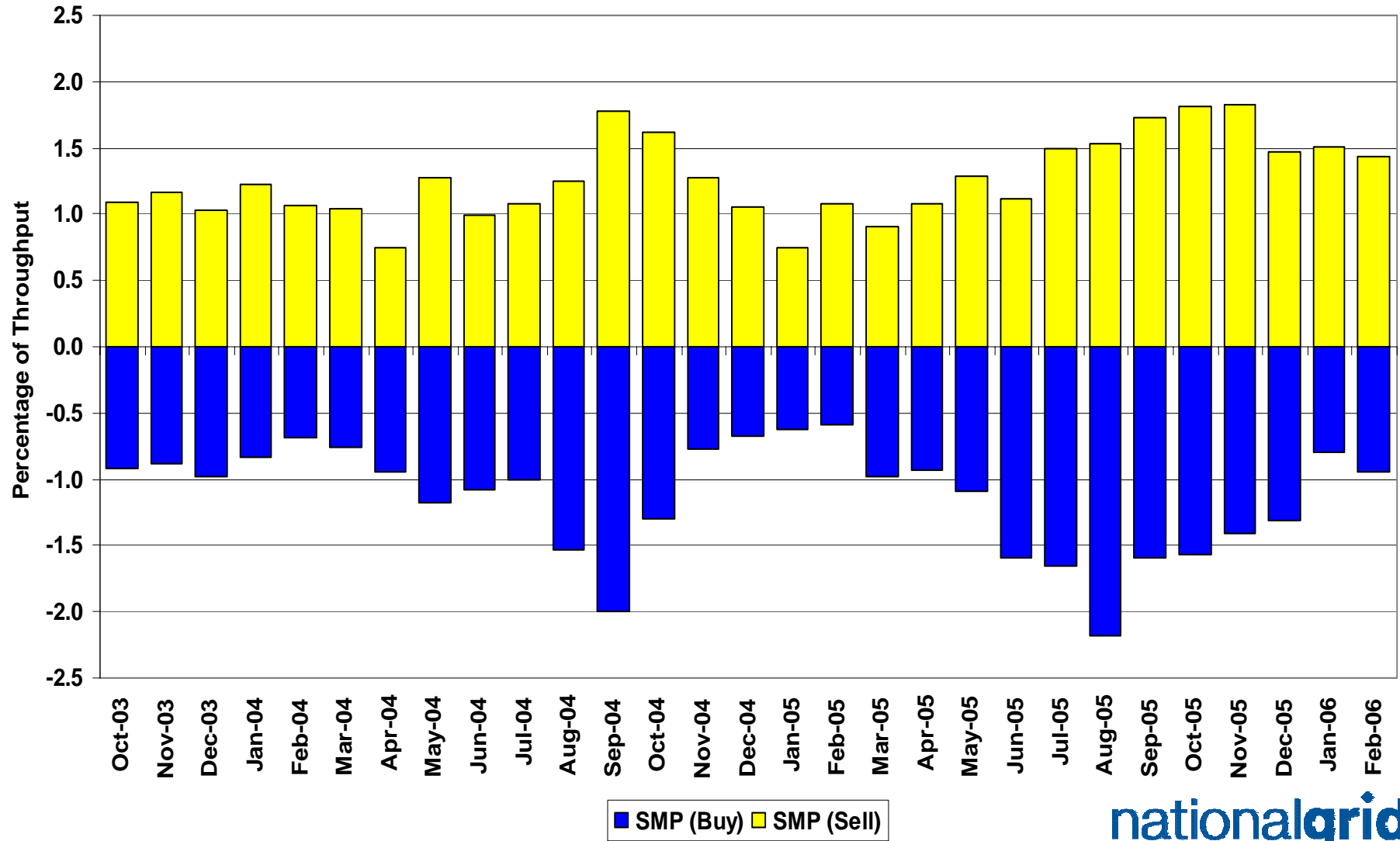


Energy Balancing Incentive

1st April 2005 to 28th February 2006



System Level Imbalance as a % of Throughput



Days of Default SMP Prices

1st October 2005 to 28th February 2006

Percentage of Days of Default SMP

SMP Buy	SMP Sell	Both
73.5%	52.3%	43.0%

Transporter Actions on OCM Mechanism

Revenues / Costs

(1st October 2005 to 28th February 2006)

	Quantity (TWh)	Average (p/kWh)	Price (Therms)	Cost (£m)
System Buy	0.370	1.8476	54.13	£6.84
System Sell	-2.423	1.8716	54.83	-£45.35
Net Position	-2.053 Sell			-£38.51

Imbalance Gas

Revenues / Costs

(1st October 2005 to 28th February 2006)

System	Quantity (TWh)	Average (p/kWh)	Price (p/therm)	Cost £m
System Buy	8.58	1.8721	54.85	£160.59
System Sell	-6.37	2.0818	60.99	-£132.52
Net Position	2.21 Buy			£28.07

Scheduling Revenues

(1st October 2005 to 28th February 2006)

	Cost £m
Input	-£2.85
Output	-£0.96
<hr/>	
Total	-£3.81

Balancing Costs

(1st October 2005 to 28th February 2006)

£m

OCM/Flex Gas (38.52)

Imbalance Gas 28.07

Scheduling (3.81)

Balancing Cost (14.26)

(-0.0026p/kWh or -0.0776p/Therm of Throughput)

Neutrality : Gas Year Comparison

(for October to February)

	Gas Year 04/05	Gas Year 05/06
Neutrality by Throughput (p/therm)	-0.0069	-0.0776