

# Operational and SO Cost Update

Stuart Bailey, Operational Forum, 24<sup>th</sup> February 2010



**nationalgrid**

The power of action.™

# Agenda

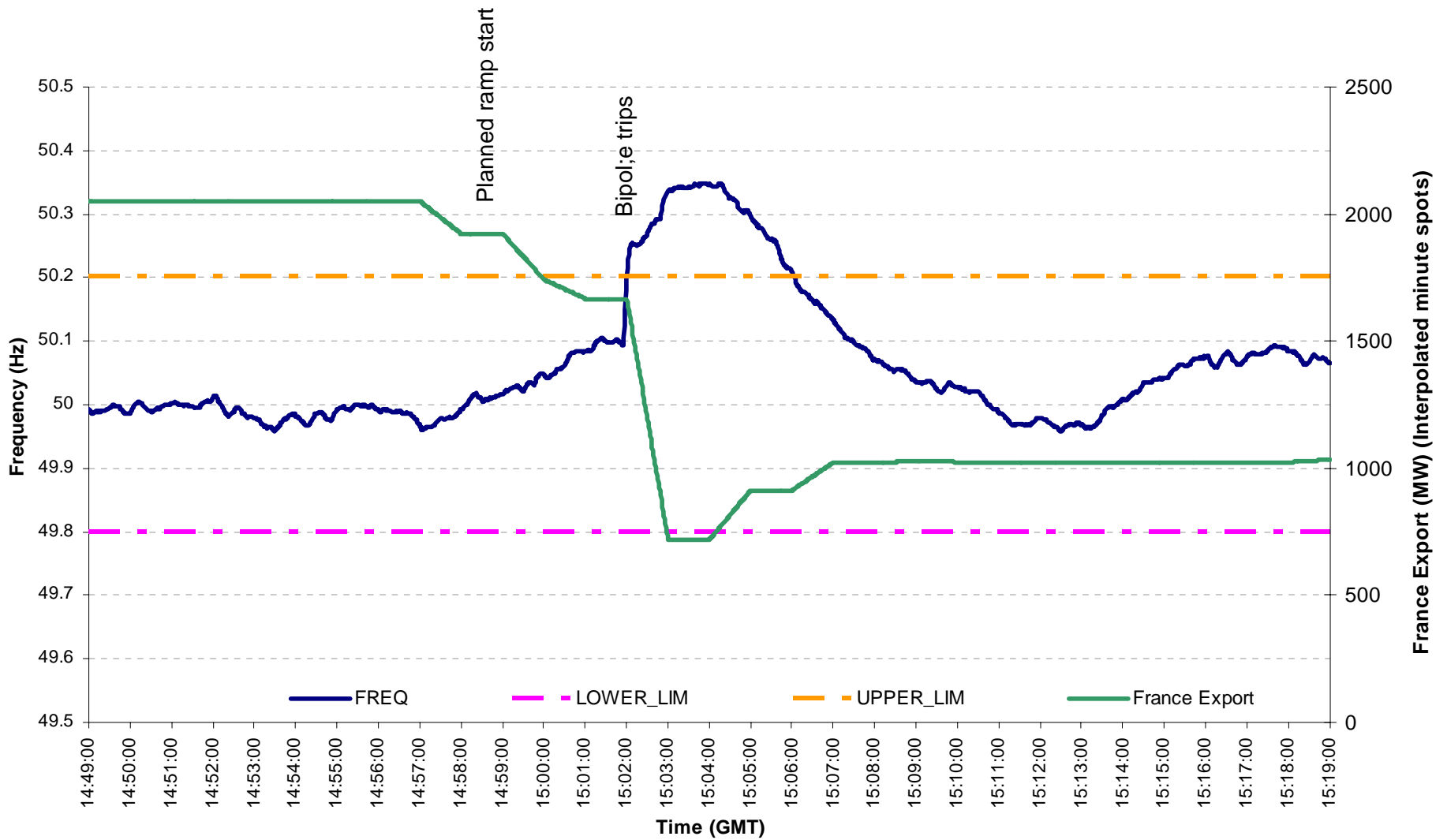
---

- ◆ Operational Update
  - ◆ Frequency events
  - ◆ Winter so far
  
- ◆ SO Cost update
  - ◆ Incentivised balancing costs
  - ◆ Constraint costs
  - ◆ Margin actions
  - ◆ BSUoS forecast

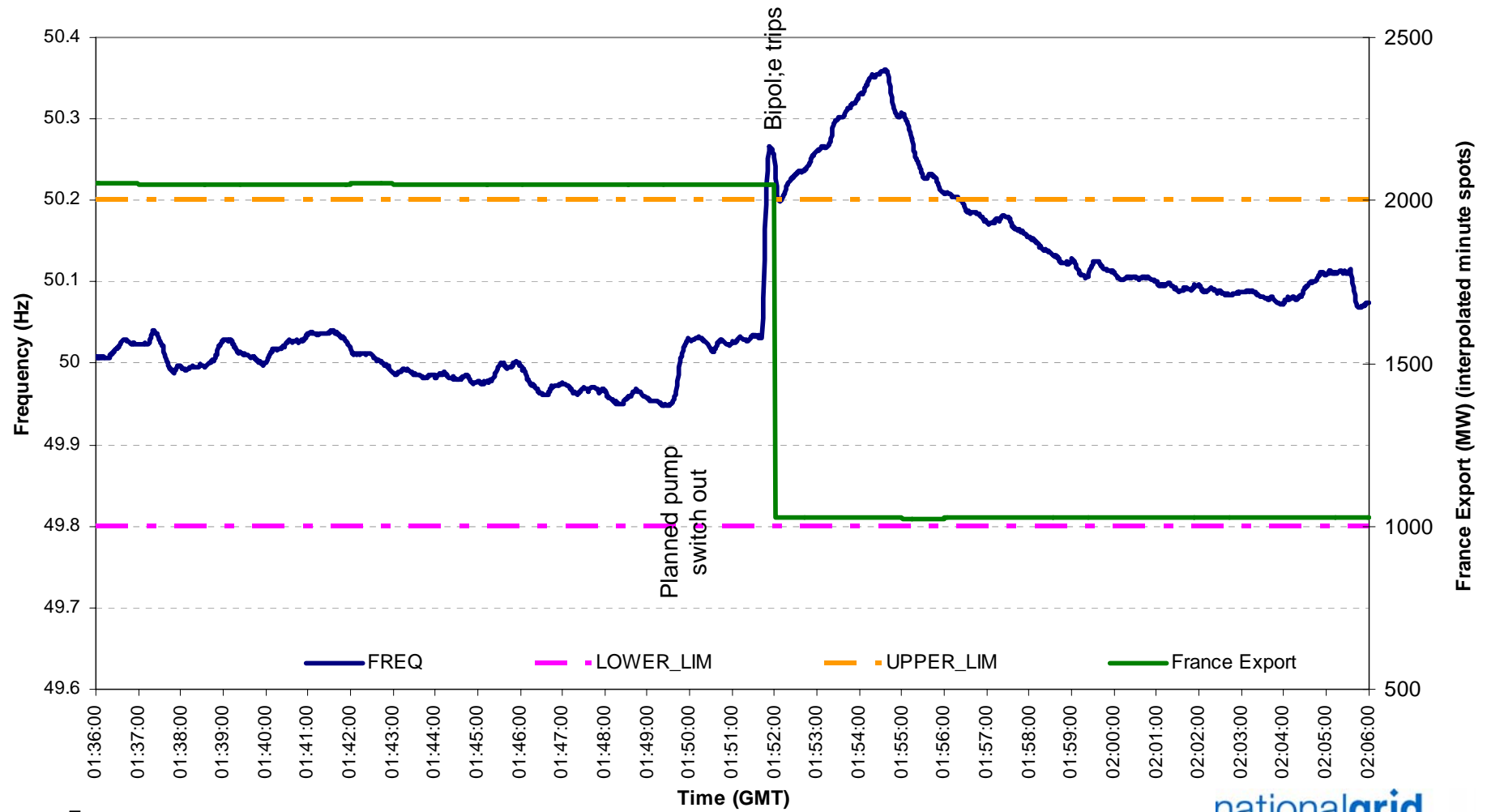
# System Operational Update



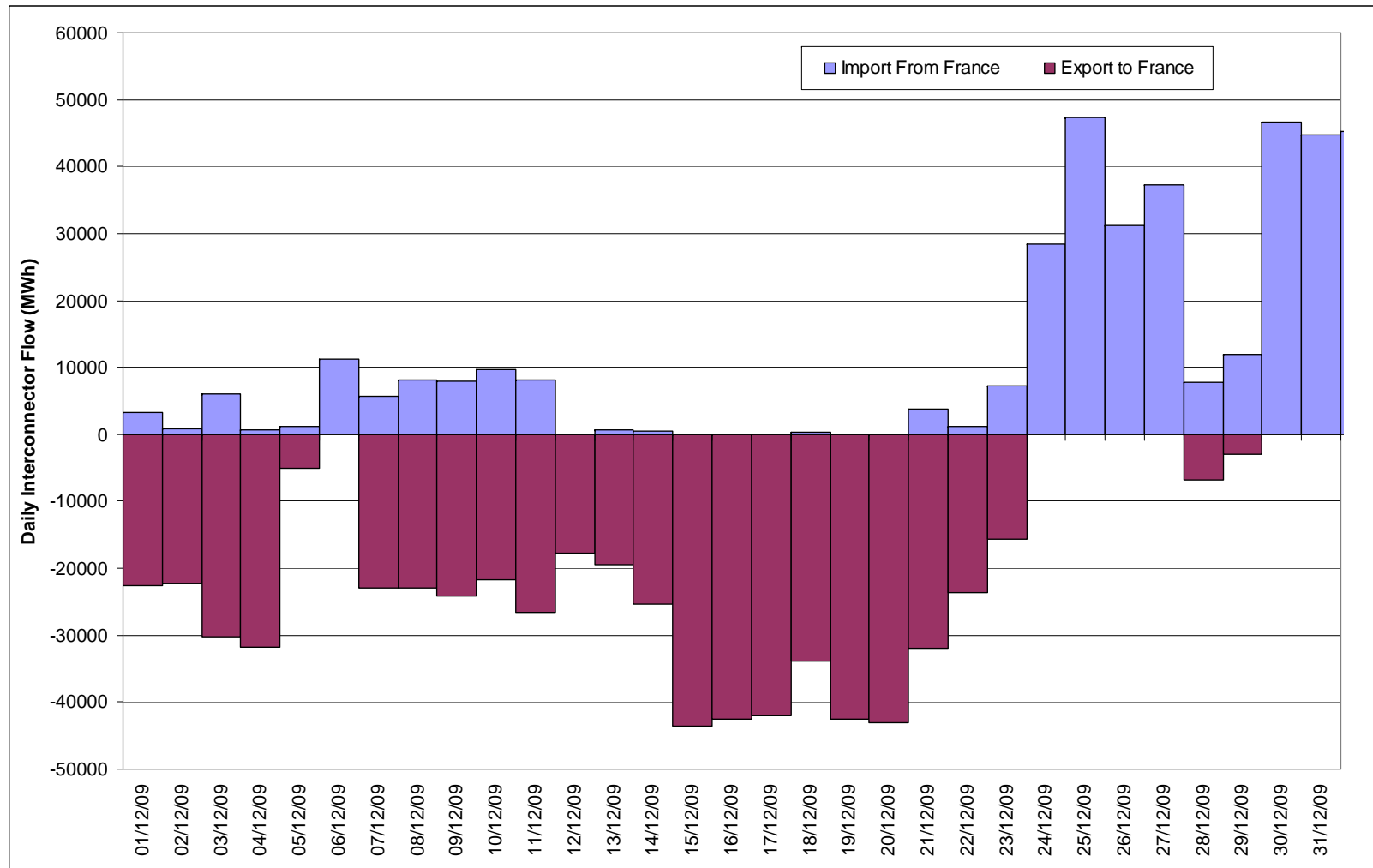
# High Frequency 9<sup>th</sup> December 2009



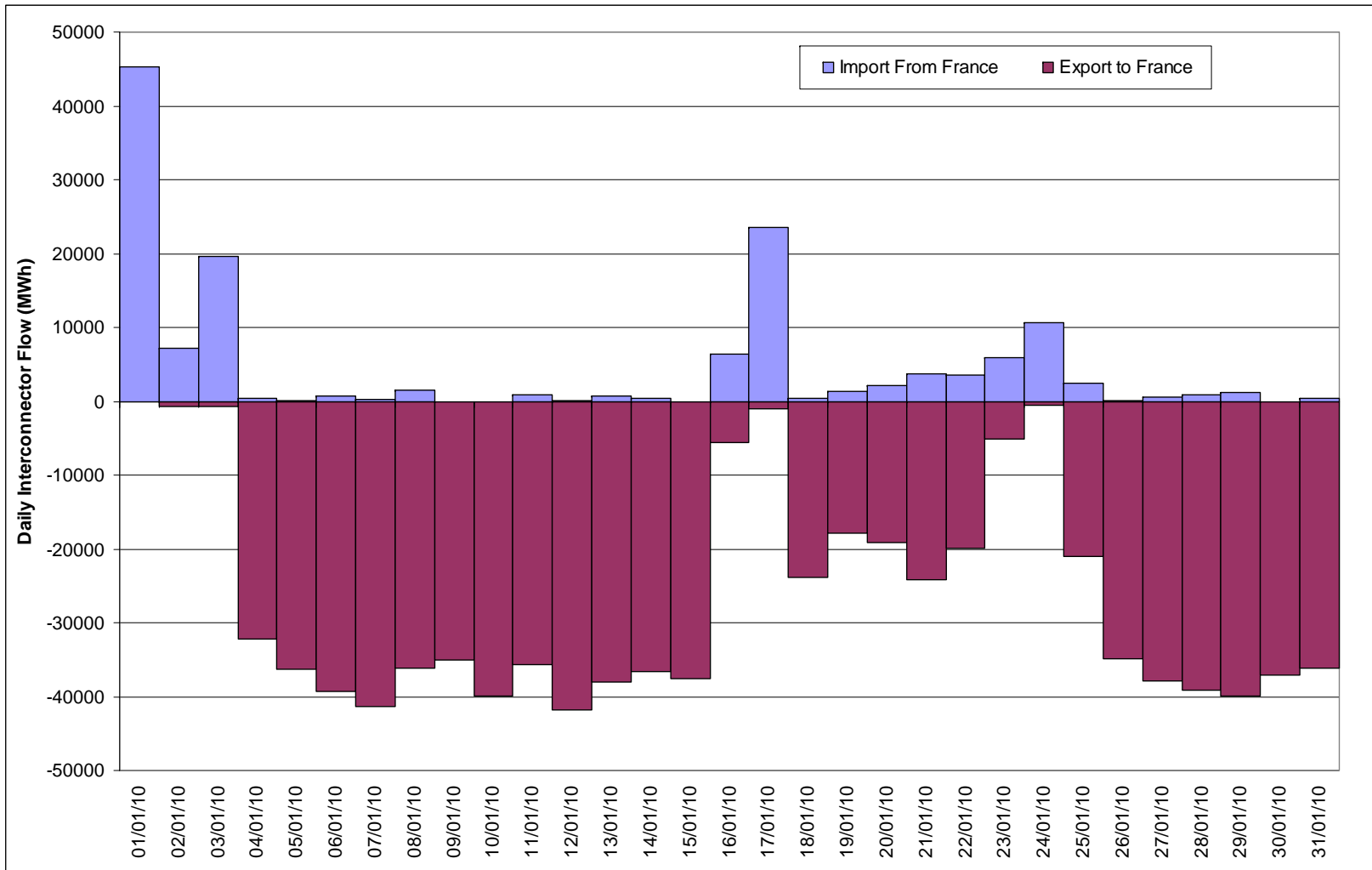
# High Frequency 9<sup>th</sup> January 2010



# French Interconnector Flows – December 2009

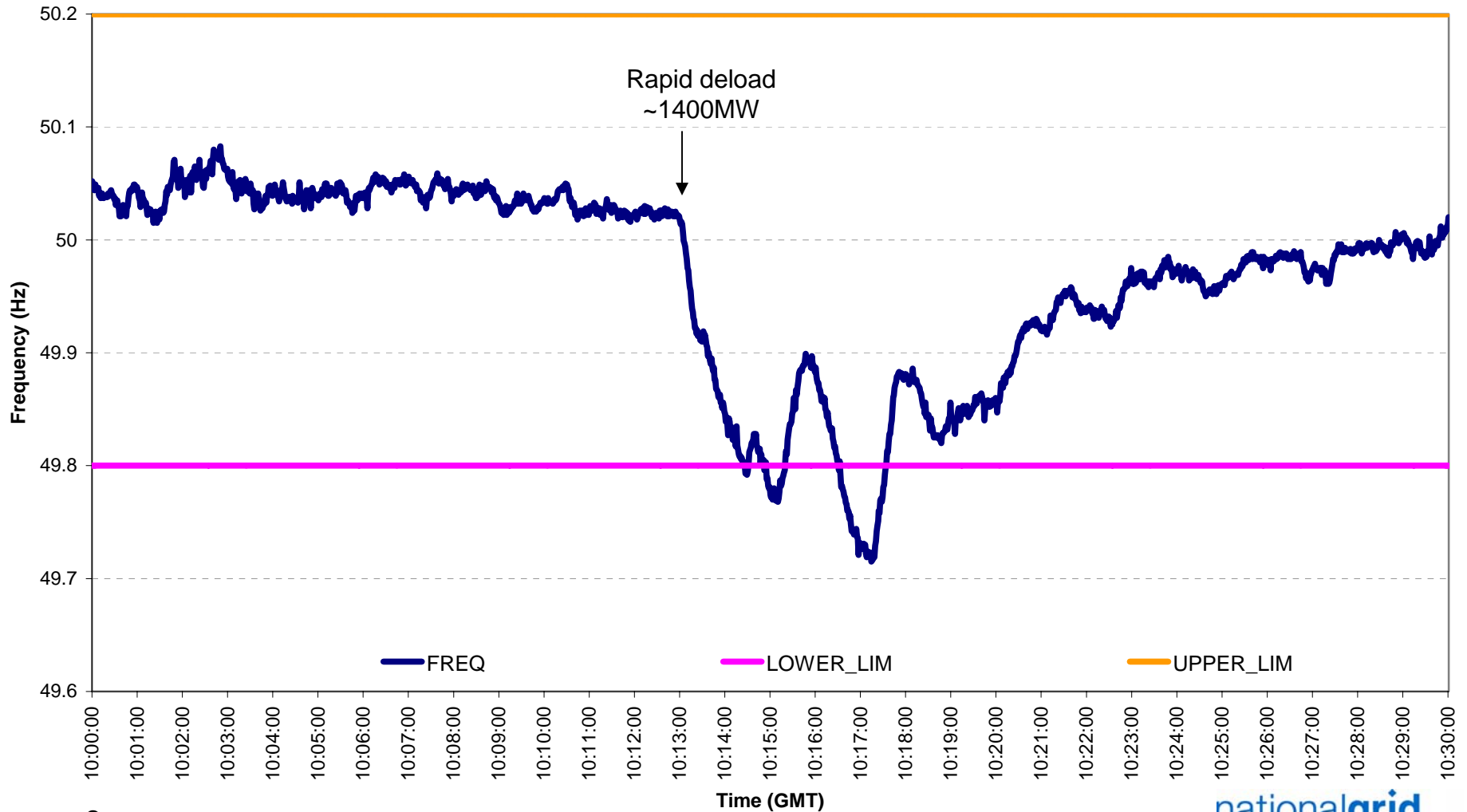


# French Interconnector Flows – January 2010



# Frequency Event 3<sup>rd</sup> February 2010

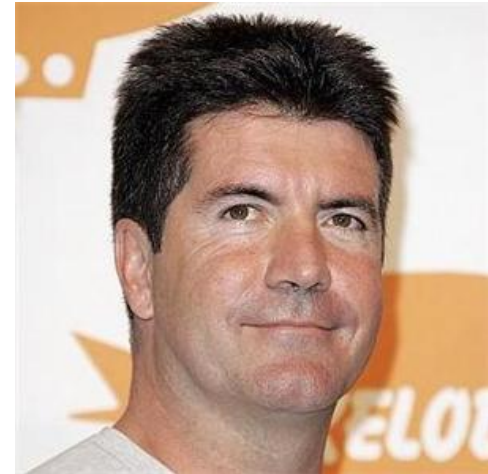
Frequency on 03/02/2010



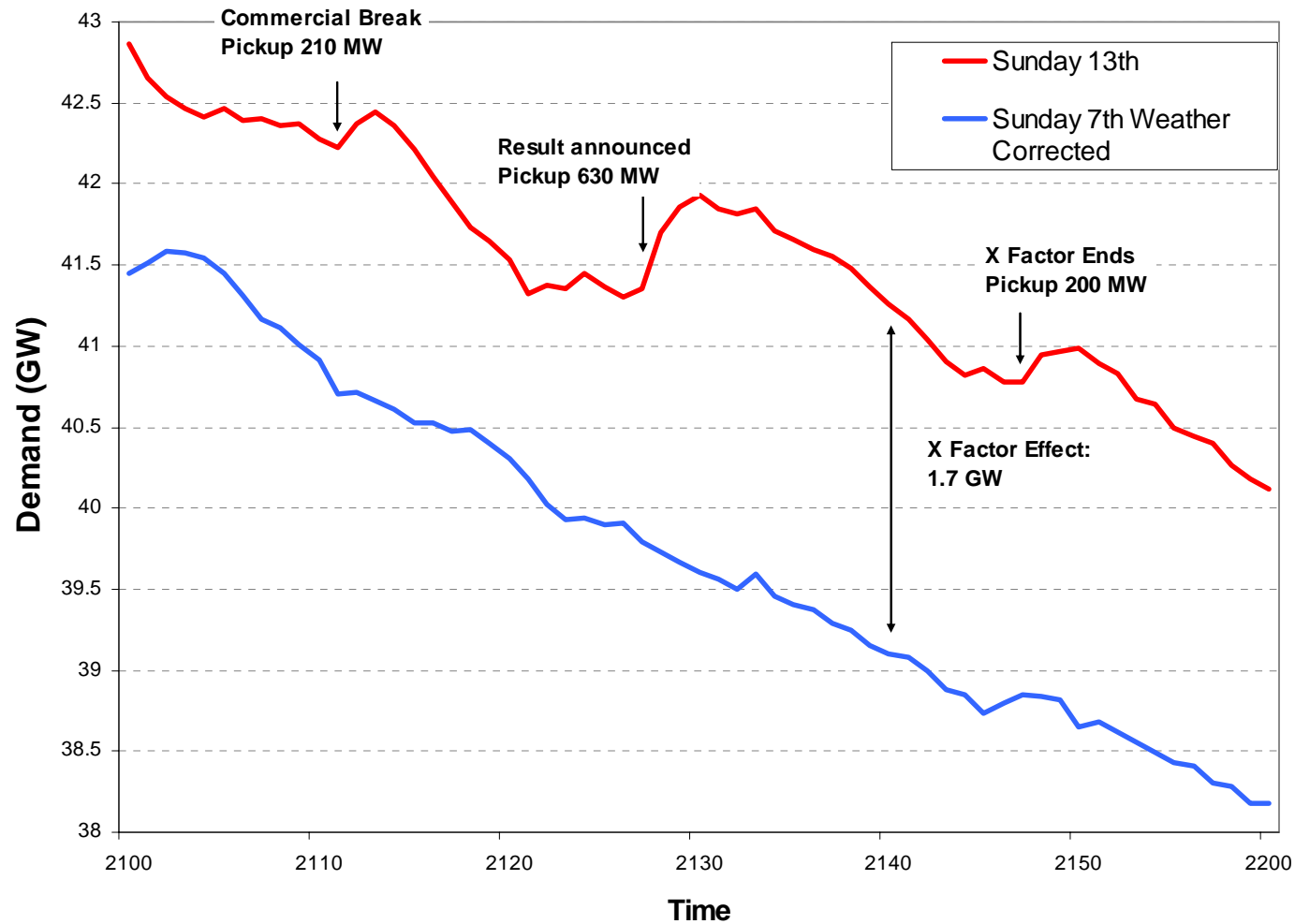
# X Factor TV Pickup 2009

---

- ◆ Final on Sunday 13<sup>th</sup> December
  - ◆ Audience Rating 15.6 million
  - ◆ Peak Audience 19.7 million
- ◆ Winner announced at 21:27
  - ◆ Pickup of **630 MW**
- ◆ Comparison with previous week
  - ◆ Demands for 6<sup>th</sup> December have been weather corrected



# Sunday - comparison with previous week



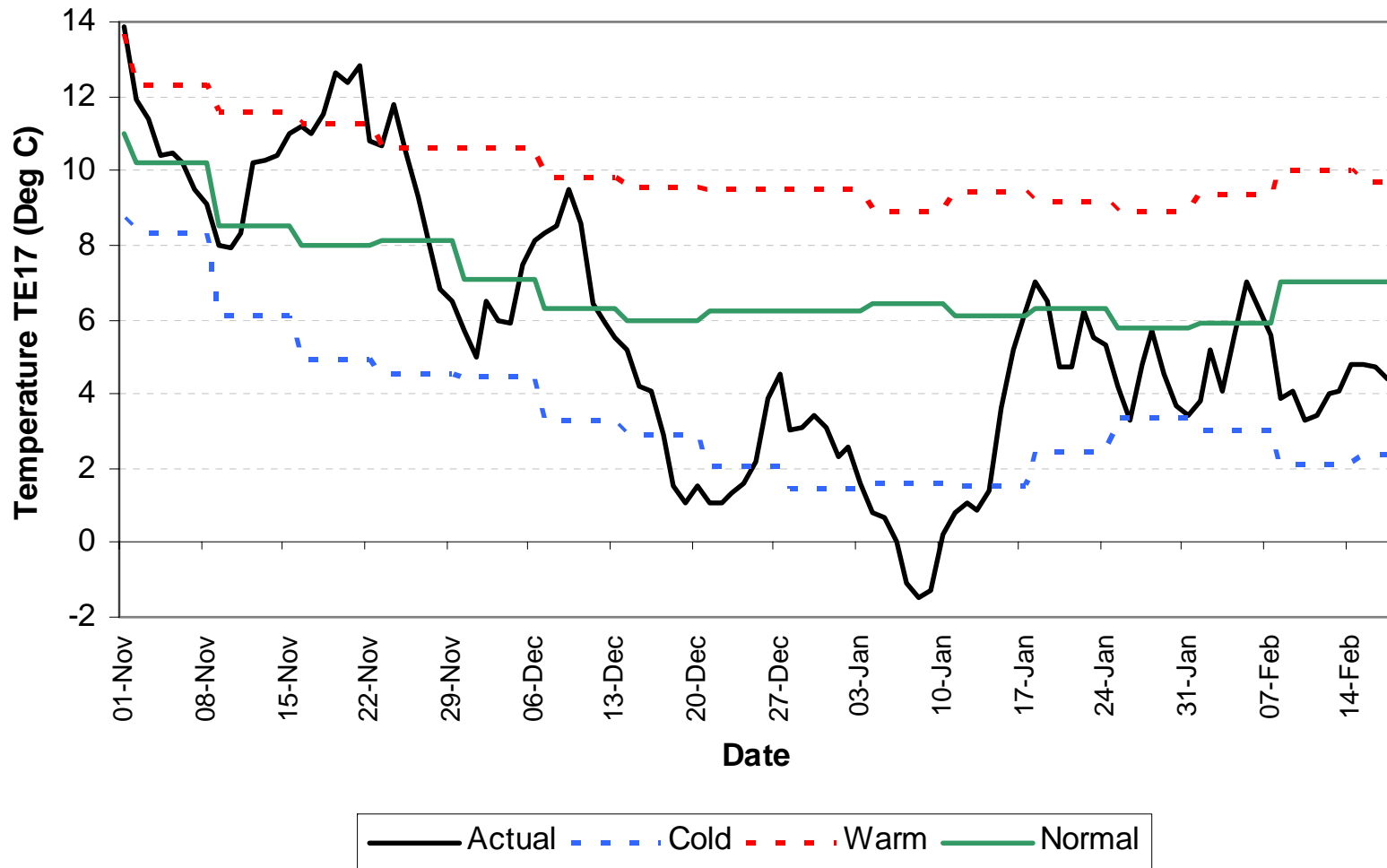
# Winter weather

---

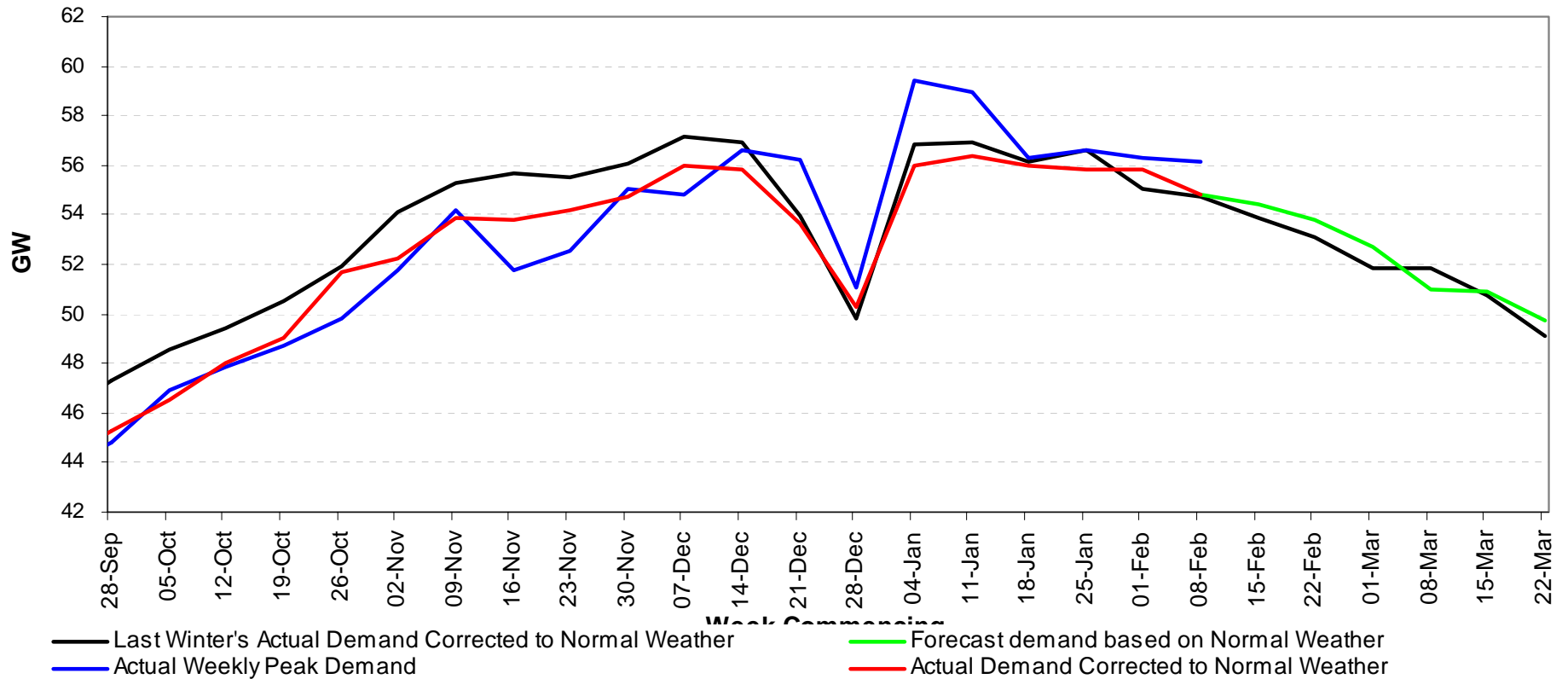


It snowed a lot at Wokingham !!

# Temperatures



# Weekly Peak Demand



# Indicative Triad Information

Address: [http://www.bmreports.com/bsp/bsp\\_home.htm](http://www.bmreports.com/bsp/bsp_home.htm)

General National Data Zonal Data BM Unit Data Help

Date	GB Demand MW	Time of peak
2010-02-08	55370	18:00
2010-02-09	55340	17:30

Information

### Indicative Triad Demand Information

Date	GB Demand MW	Time of peak
3 highest demands so far for winter triad period 1 November 2009 to 28 February 2010		
2009-12-15	56504	17:00
2010-01-07	59310	17:00
2010-02-03	56347	17:00

Week Number	GB Demand MW
3 highest forecast demands for rest of winter triad period 1 November 2009 to 28 February 2010	
6	54600
8	53100
NULL	NULL

Information

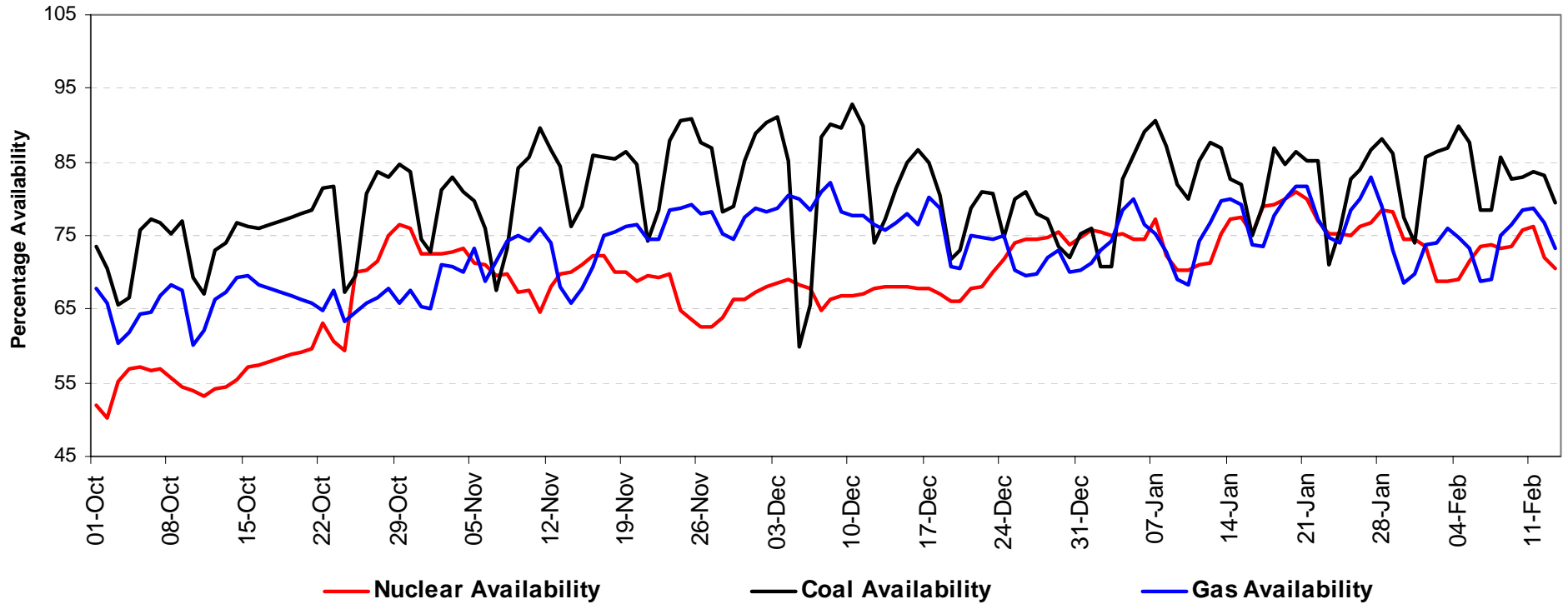
### Recent System Prices

Done Internet

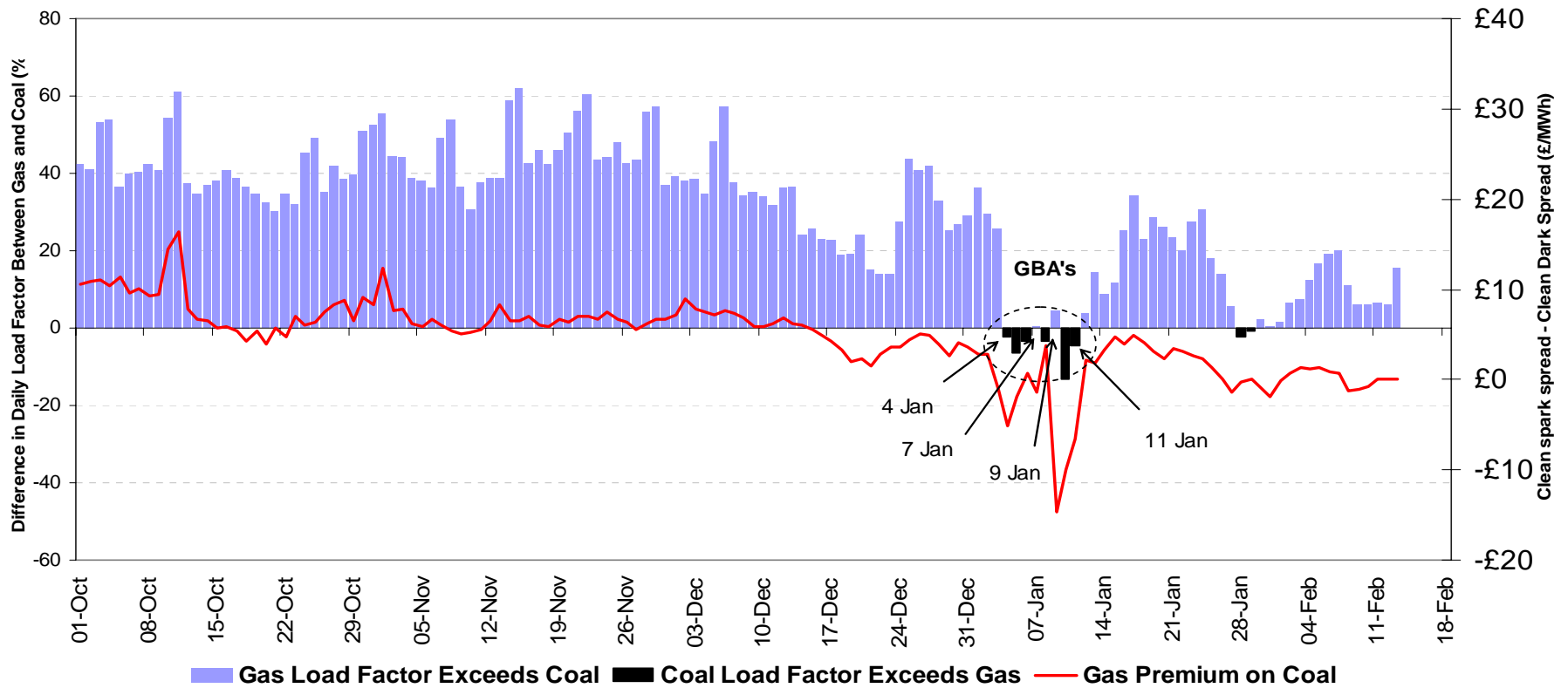
Start Microsoft Office ... Microsoft PowerPoint... Book2 neta | Electricity... 09:05

[http://www.bmreports.com/bsp/bsp\\_home.htm](http://www.bmreports.com/bsp/bsp_home.htm)

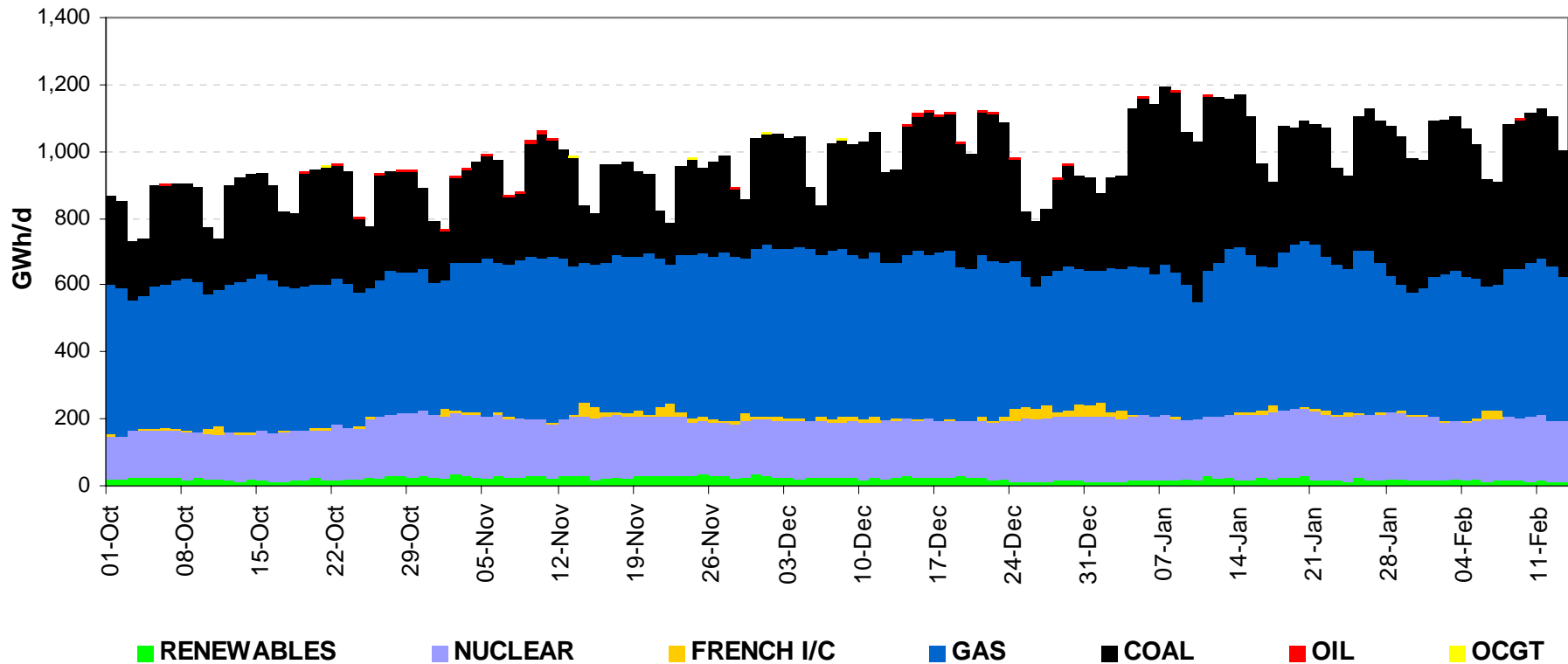
# Generation Availability



# Gas vs Coal Generation Levels



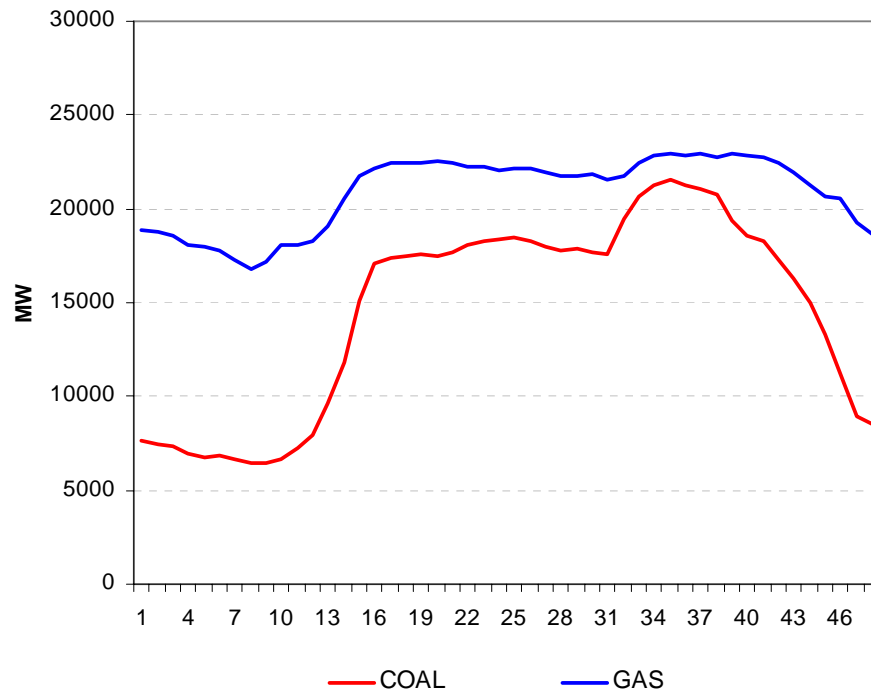
# Generation Mix



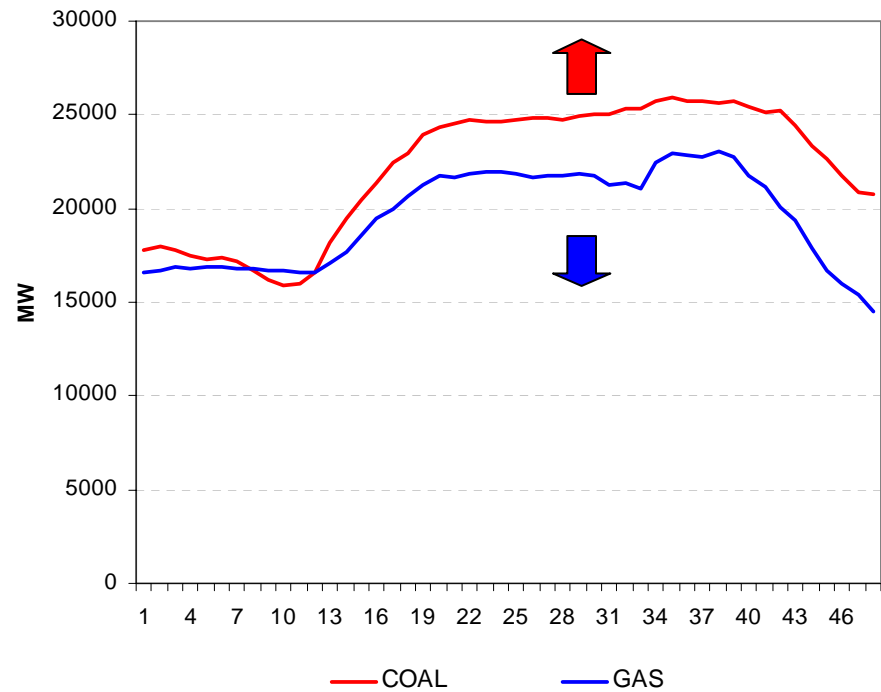
# Switch from gas to coal

Driven by high gas prices

Thursday 10 December

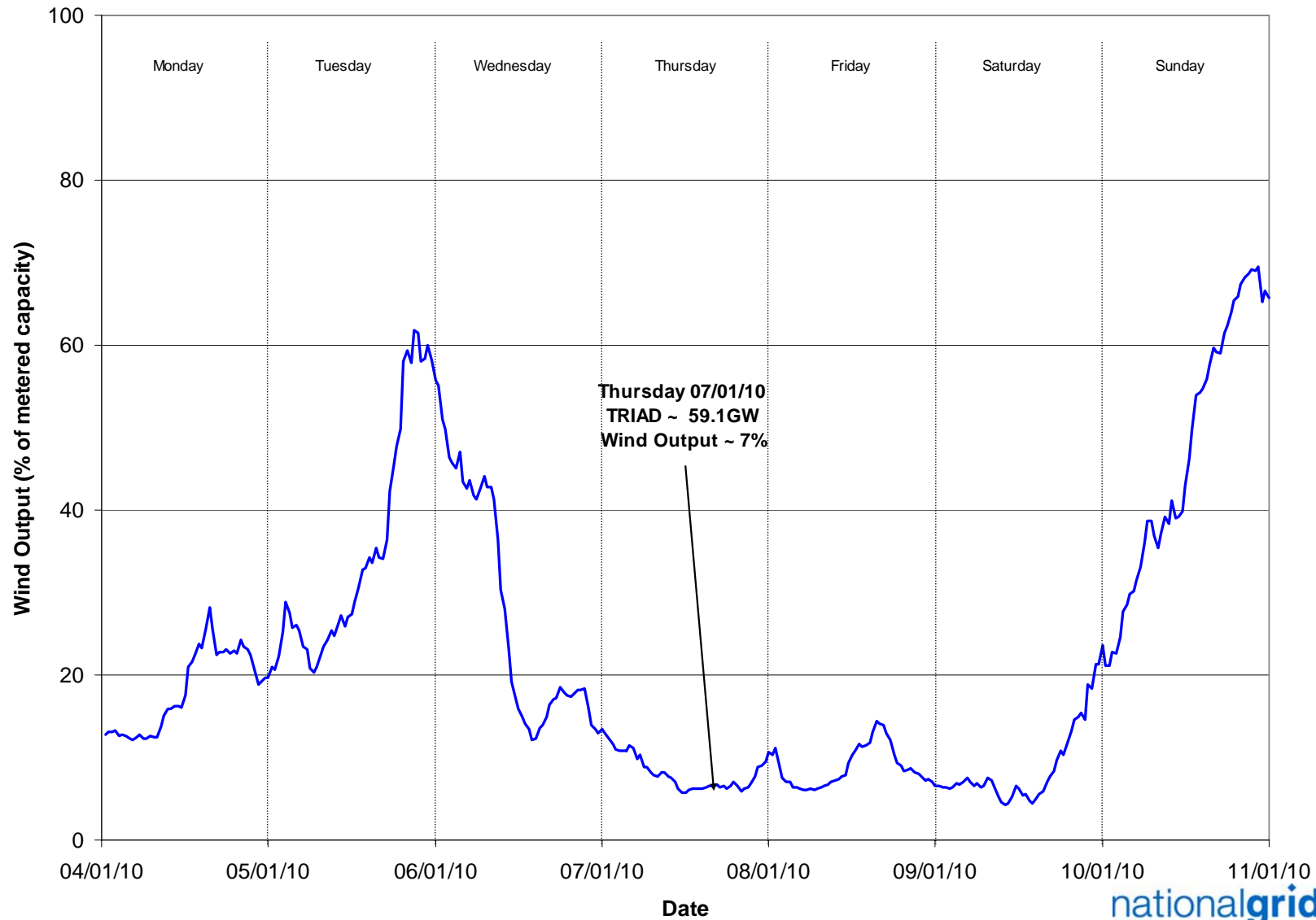


Thursday 7 January



No evidence of any CCGTs switching to distillate  
(comparing gas used to electricity generated)

# Wind output over peak demand

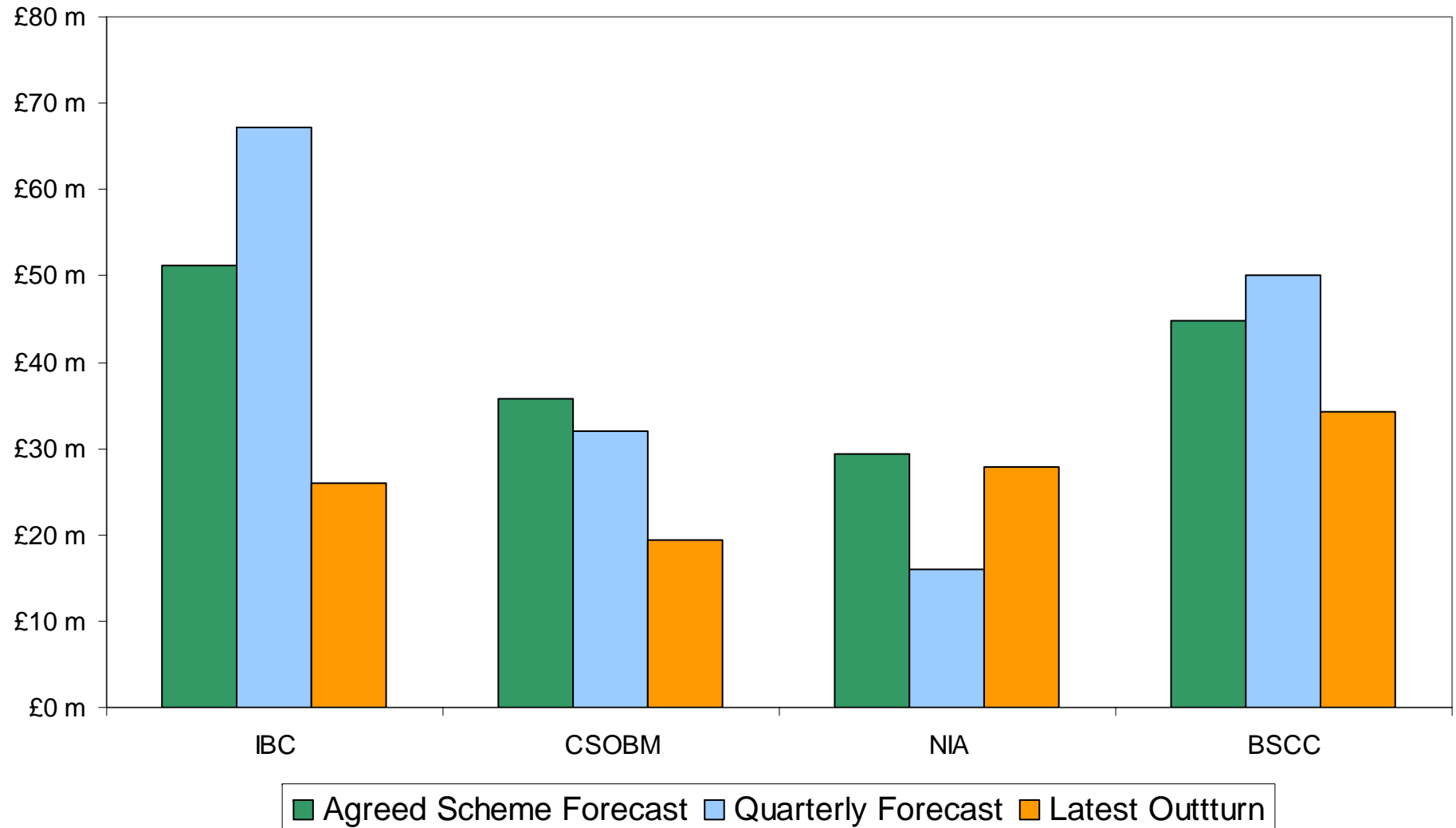


# SO Cost Update

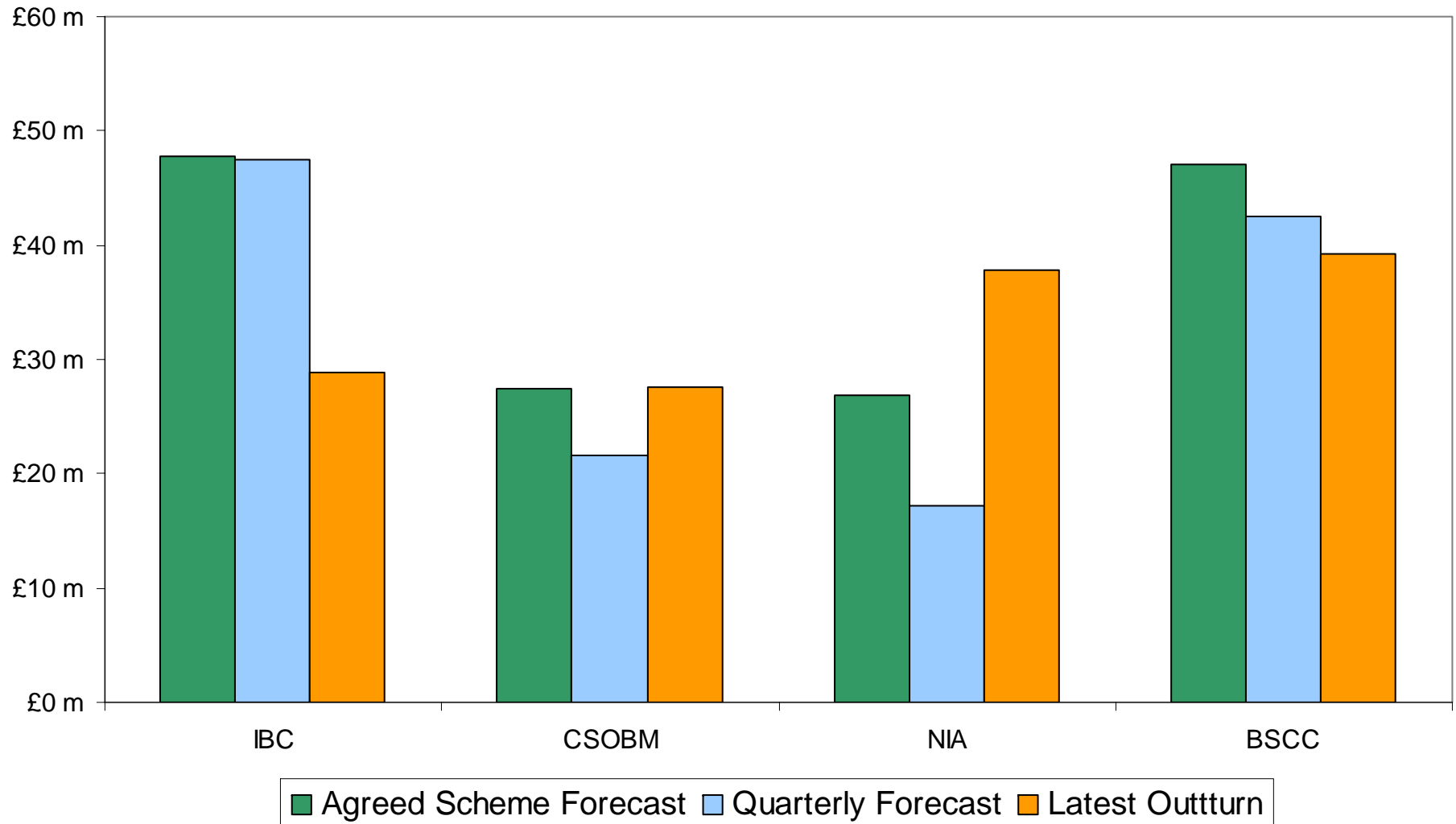
---



# IBC component comparison – December 2009

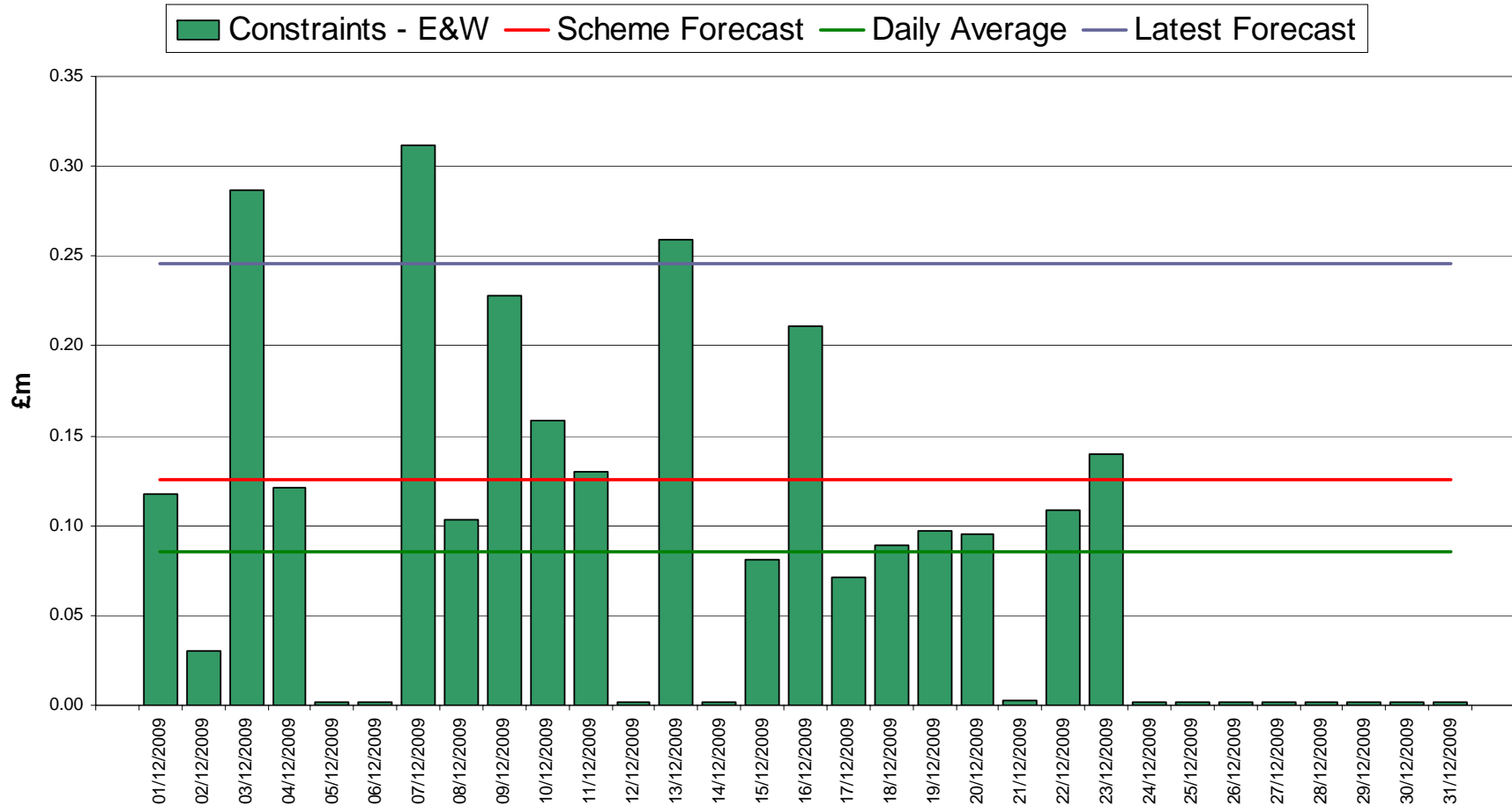


# IBC component comparison – January 2010



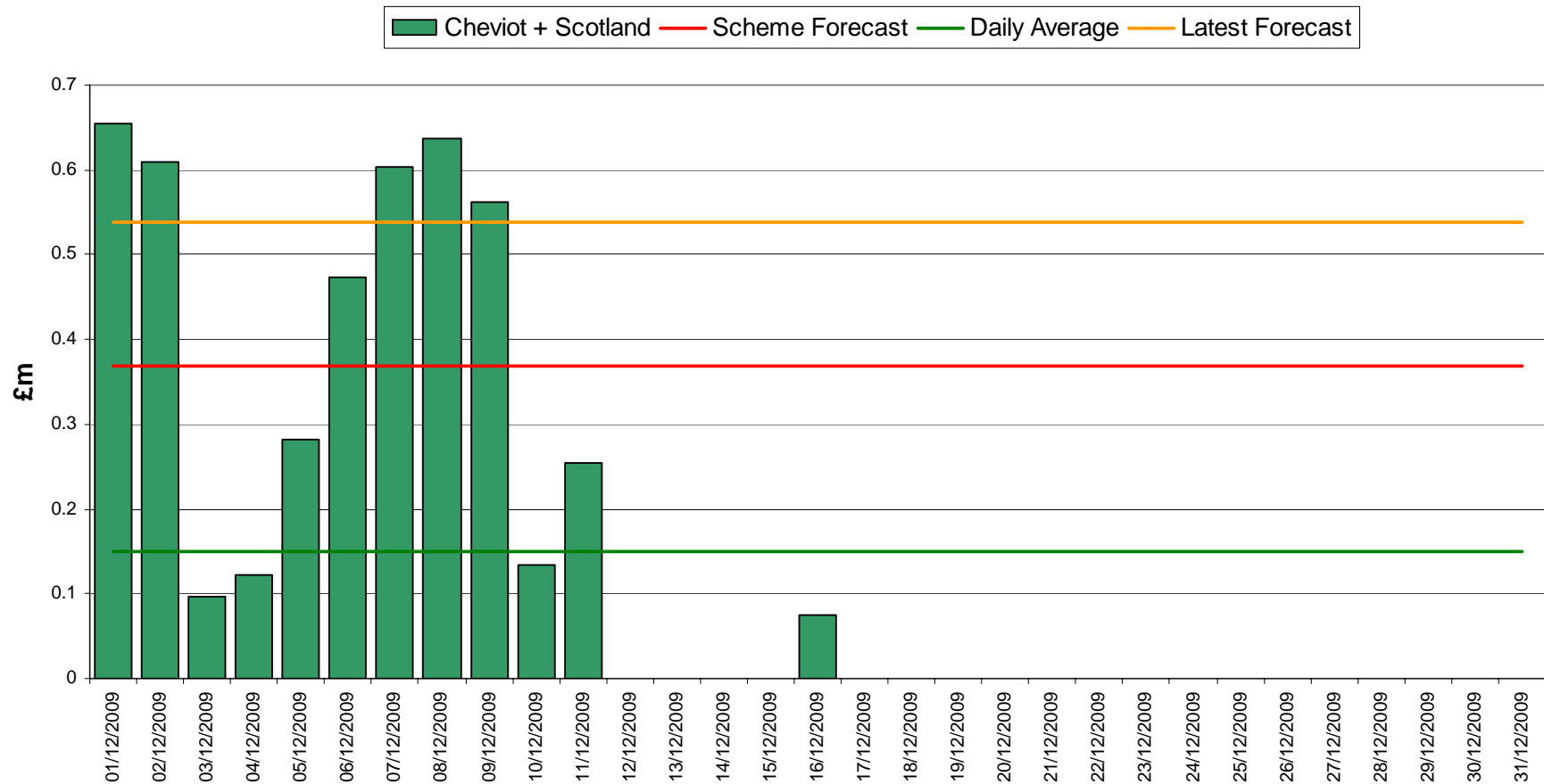
# Constraint costs – December

## ◆ E&W constraint costs: December



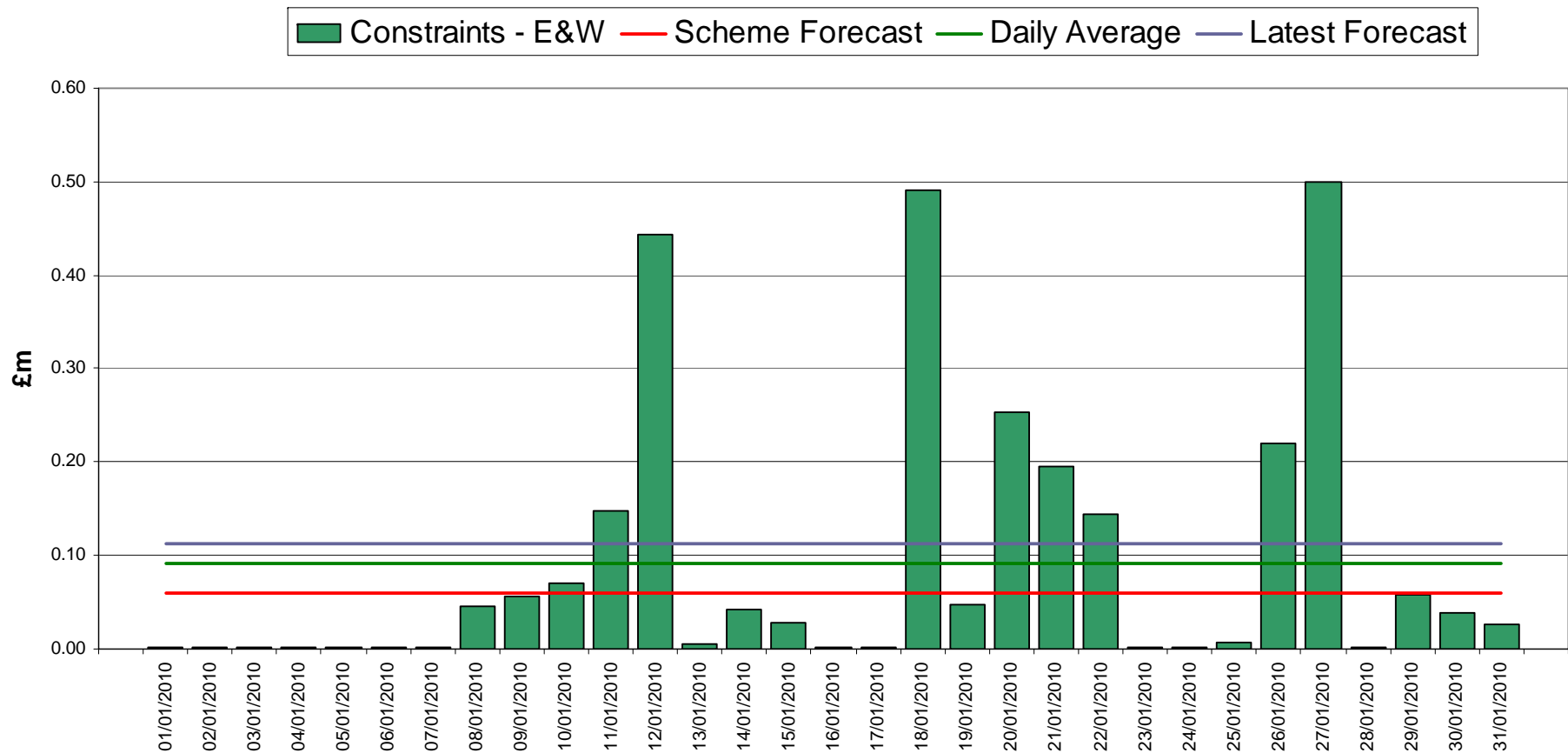
# Constraint costs – December

## ◆ Scotland & Cheviot constraint costs: December



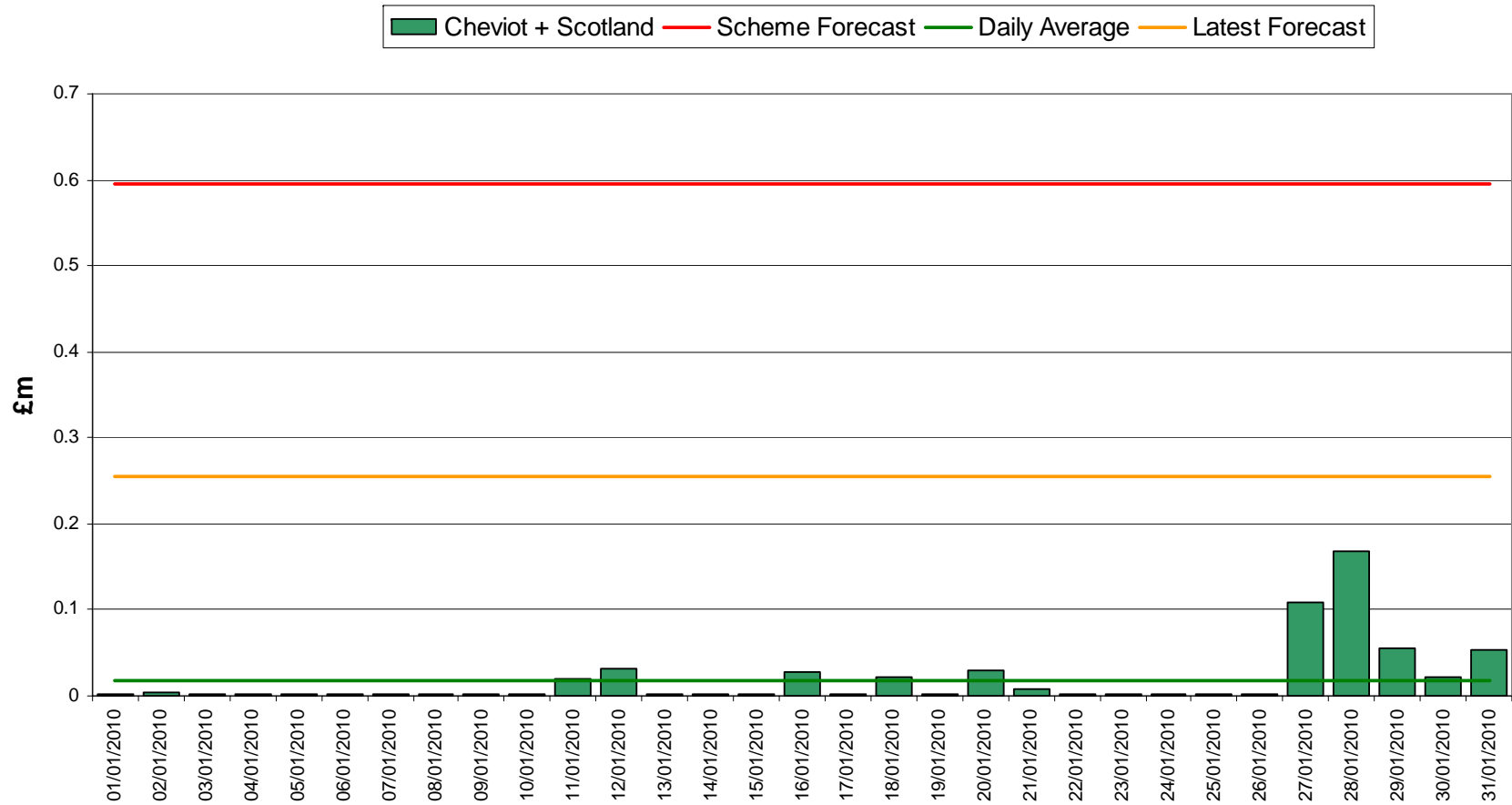
# Constraint costs – January

## ◆ E&W constraint costs: January



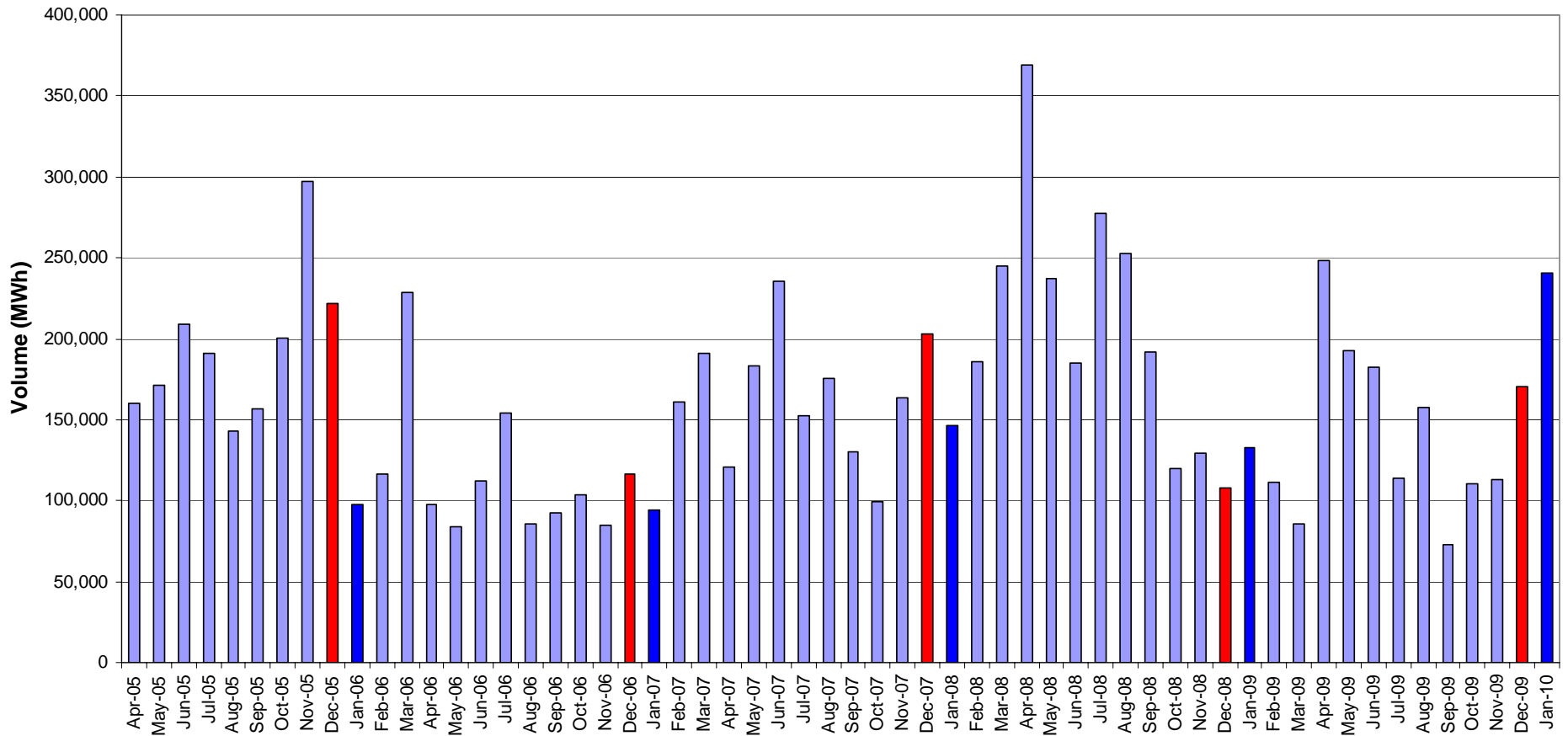
# Constraint costs – January

## ◆ Scotland & Cheviot constraint costs: January

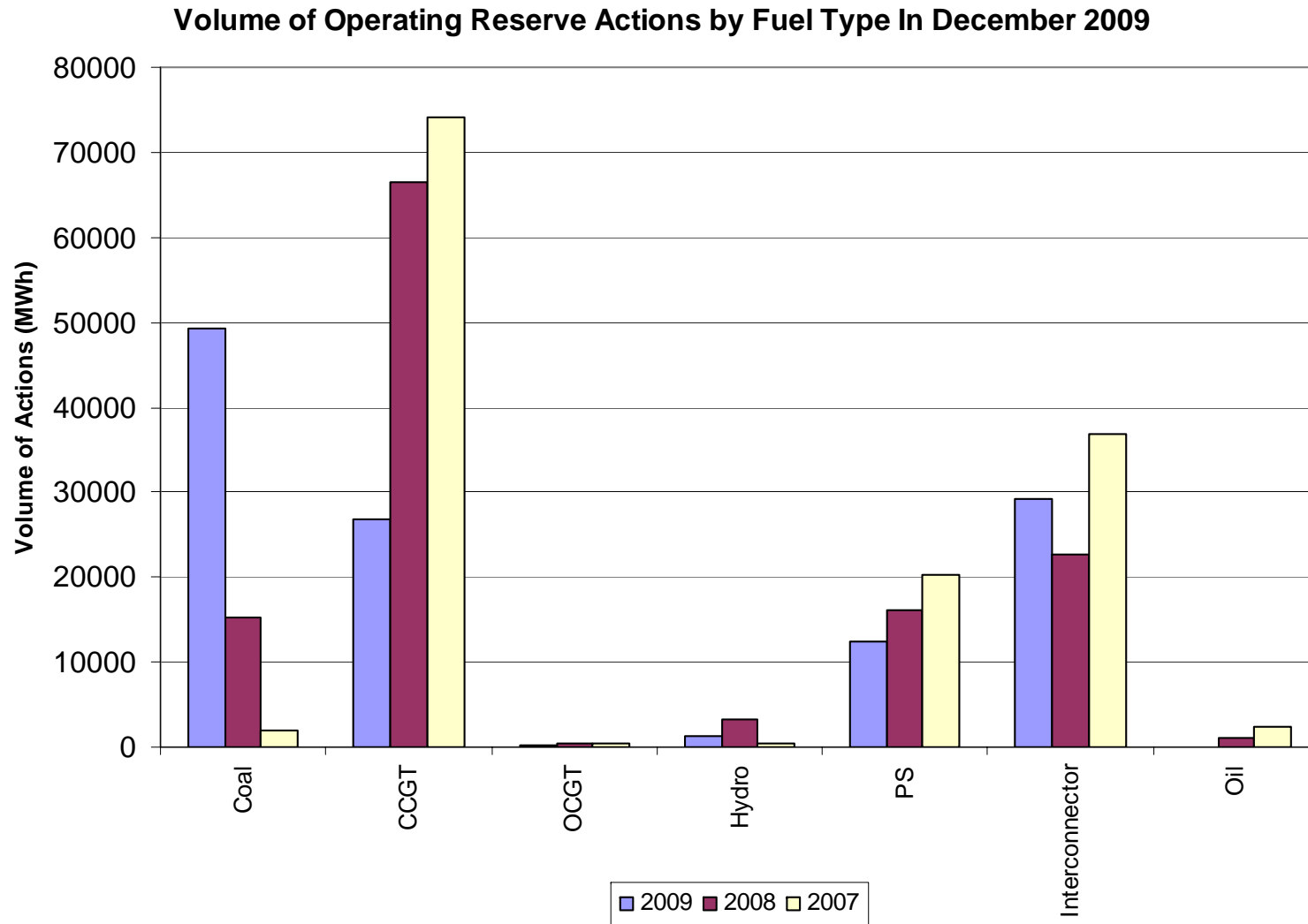


# Margin Actions by Volume

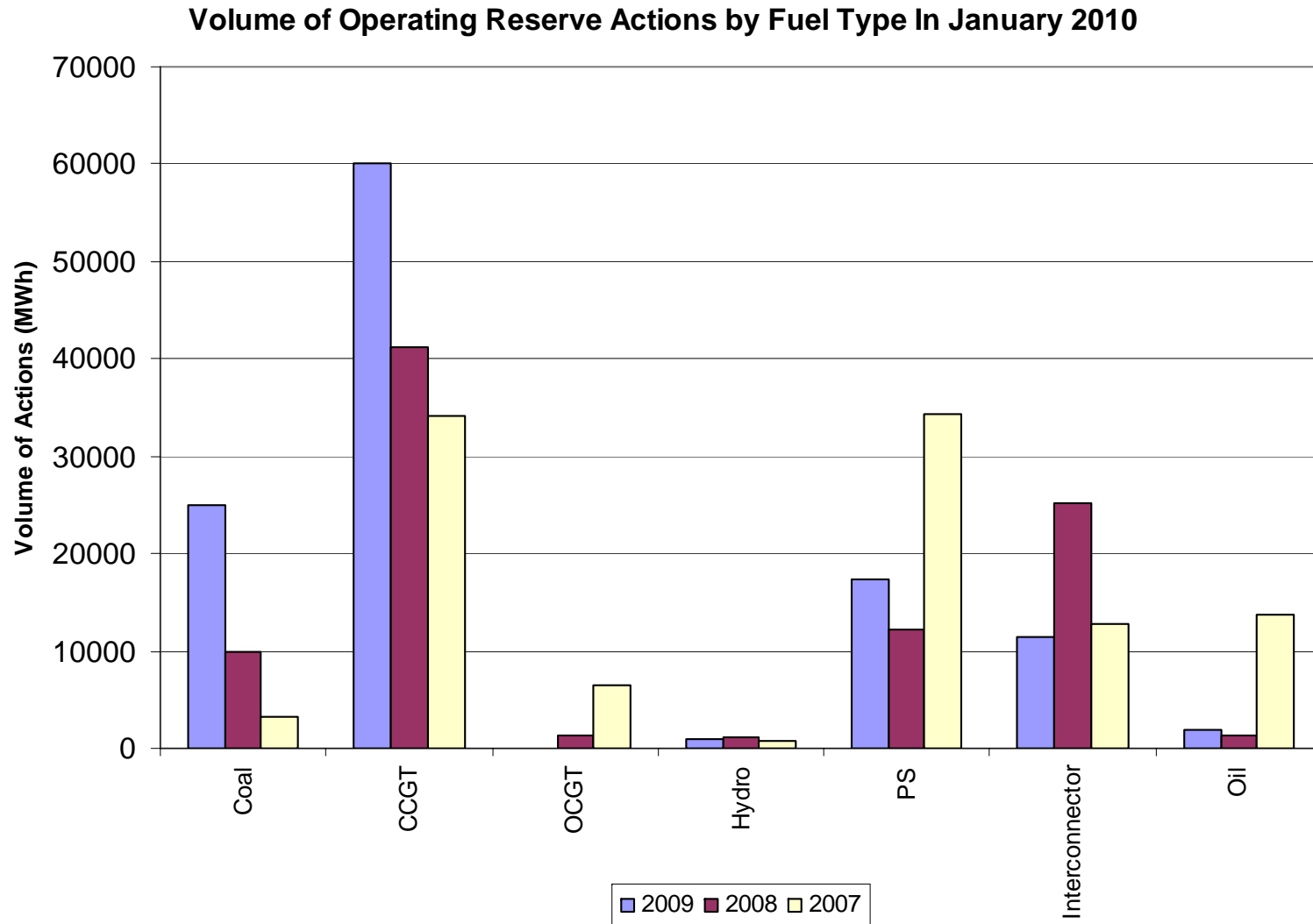
Volume of BM Operating Reserve Actions by Month



# Margin Actions by Fuel Type – December 2009

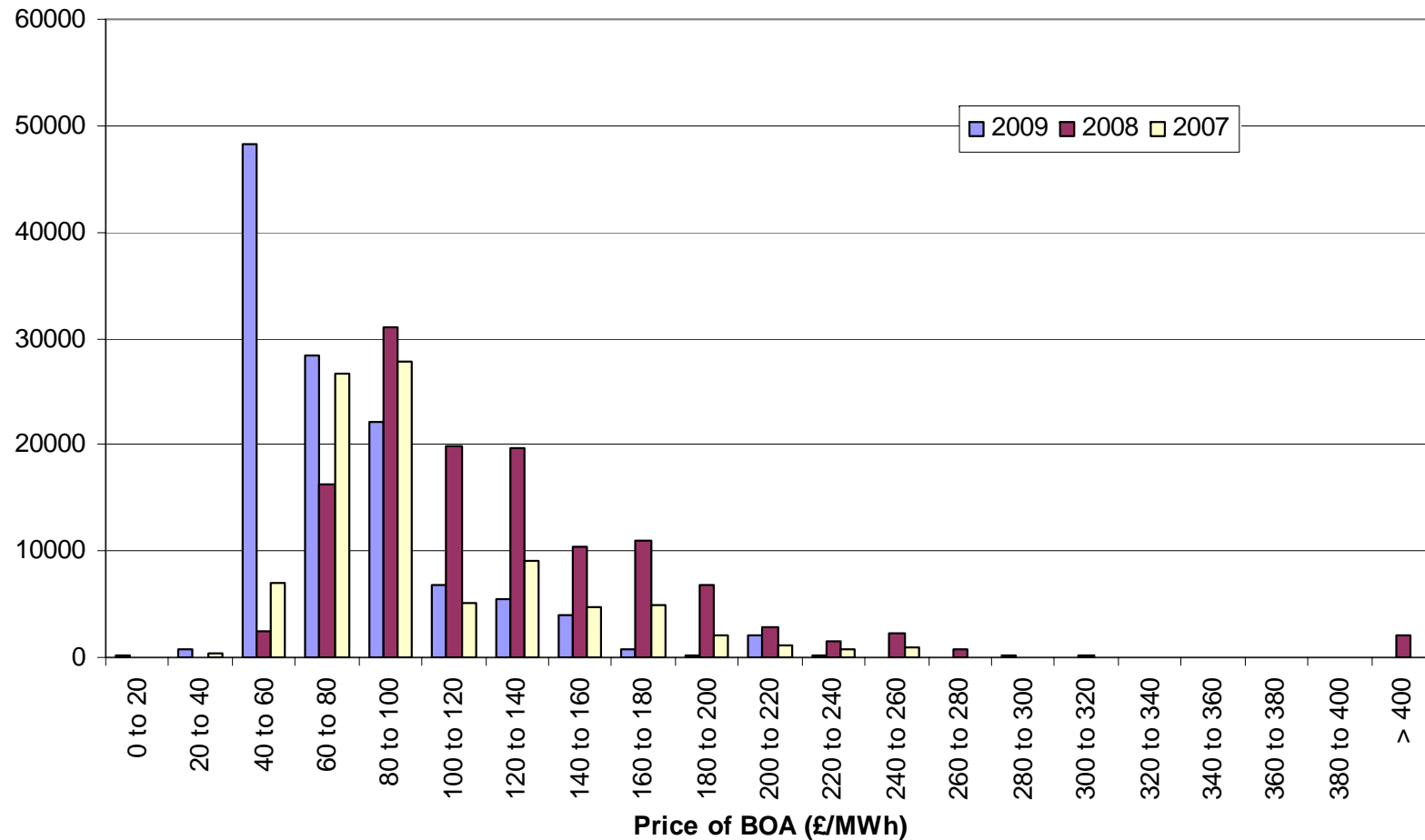


# Margin Actions by Fuel Type – January 2010



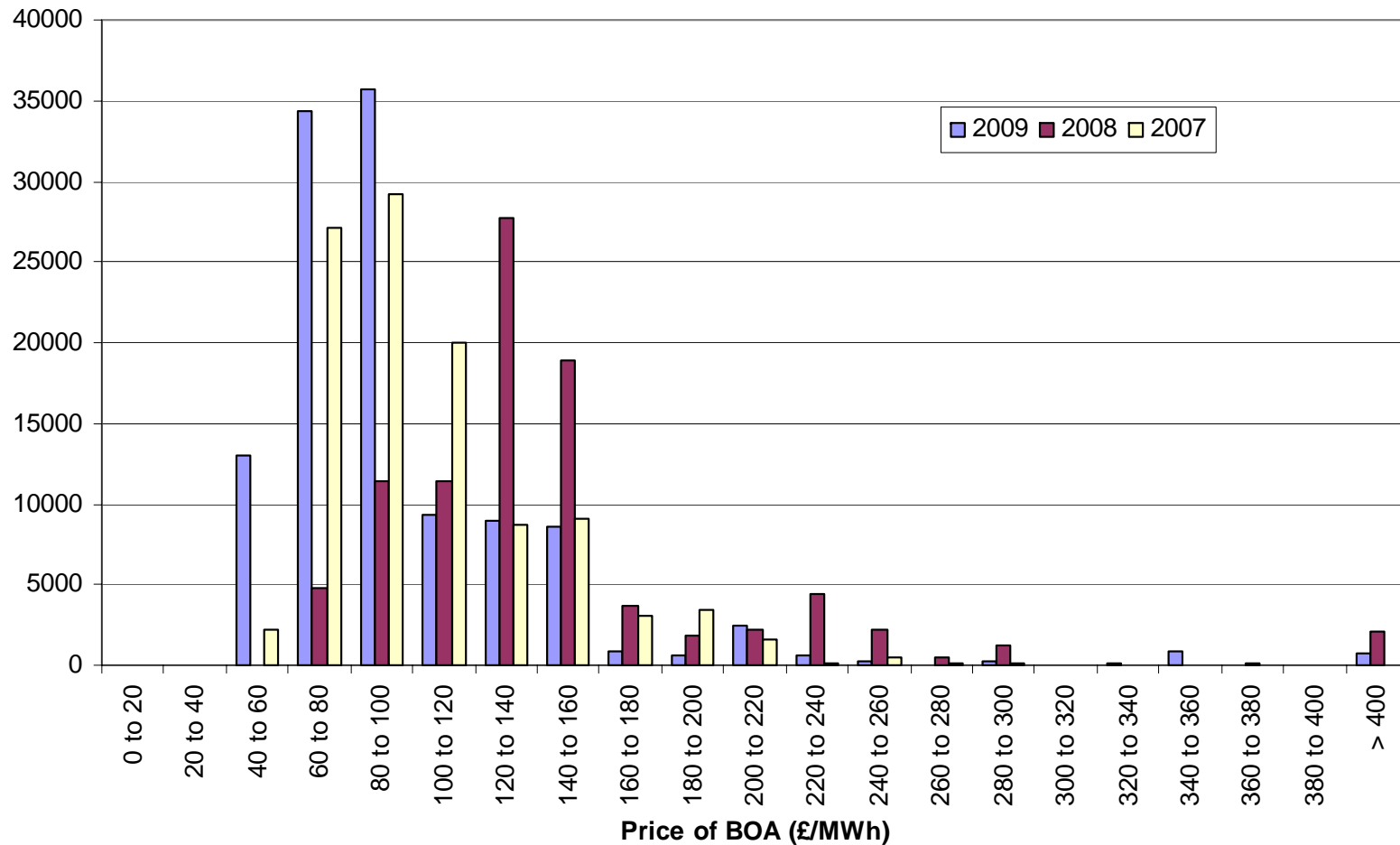
# Margin Actions by Price – December 2009

Volume of Operating Reserve BM Actions in December 2009 by Price



# Margin Actions by Price – January 2010

Volume of Operating Reserve BM Actions in January 2010 by Price



# Monthly IBC 2009/10 forecasts and outturn



# Provisional BSUoS outturn / forecasts 2009/10

- ◆ Current BSUoS central forecast £1.31/MWh
- ◆ Overall forecast range £1.25/MWh to £1.40/MWh

