

Fast Reserve

Market Information for Tenders for August 2008

National Grid publishes this information, in order to inform potential participants for the Fast Reserve tender round for August 2008.

Fast Reserve Availability

Our indicative requirement for Fast Reserve in August 2008 is shown on a Settlement Period basis in Figure 1. This requirement covers weekdays, Saturdays, Sundays and Bank Holidays.

Fast Reserve Daily Requirement for August 2008

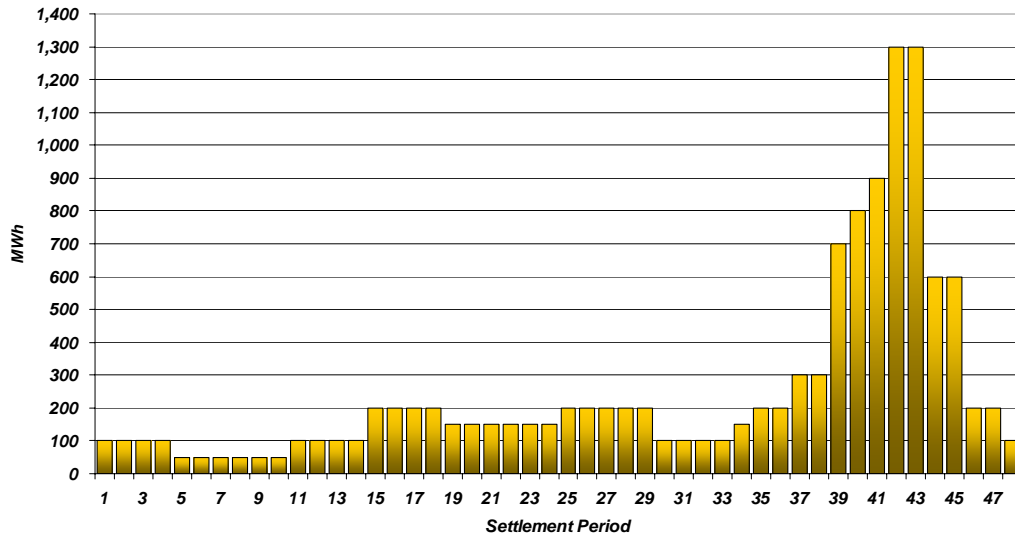


Figure 1

Figure 1 gives an indication of the times of day when Fast Reserve is most useful to National Grid. The actual amount of Fast Reserve "holding" varies from day to day, according to system conditions.

Fast Reserve Utilisation

Figure 2 shows the daily utilisation of Fast Reserve in the BM and elsewhere during May 2008 and June 2008. The BM information is based on the aggregate of Offers plus Bids accepted to provide Fast Reserve or an equivalent service.

Daily Accepted Fast Reserve Volume

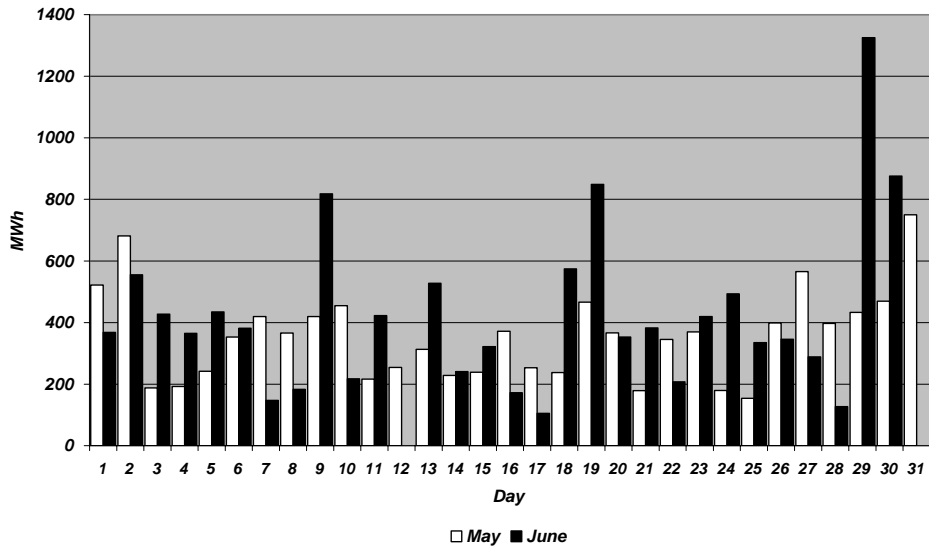


Figure 2

Figure 3 represents this data as total utilisation by Settlement Period across each month. This shows the daily profile of Fast Reserve utilisation.

Period Accepted Fast Reserve Volume

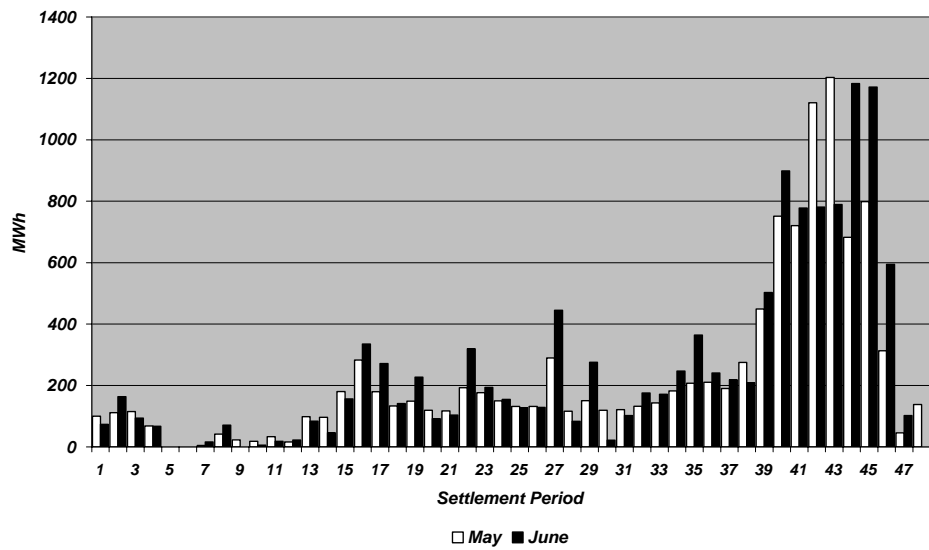


Figure 3

Figure 4 represents the same historical data, as an average utilisation price per Settlement Period for each month.

Period Average Fast Reserve Utilisation Price

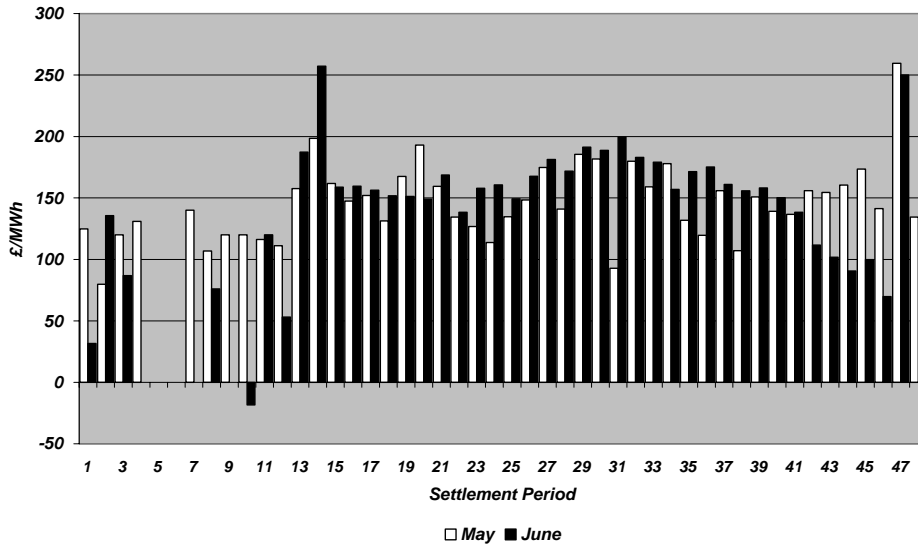


Figure 4

Finally, the same data is used in Figure 5, below, to show the profile of total Fast Reserve utilisation expenditure per Settlement Period for each month.

Period Total Fast Reserve Utilisation Expenditure

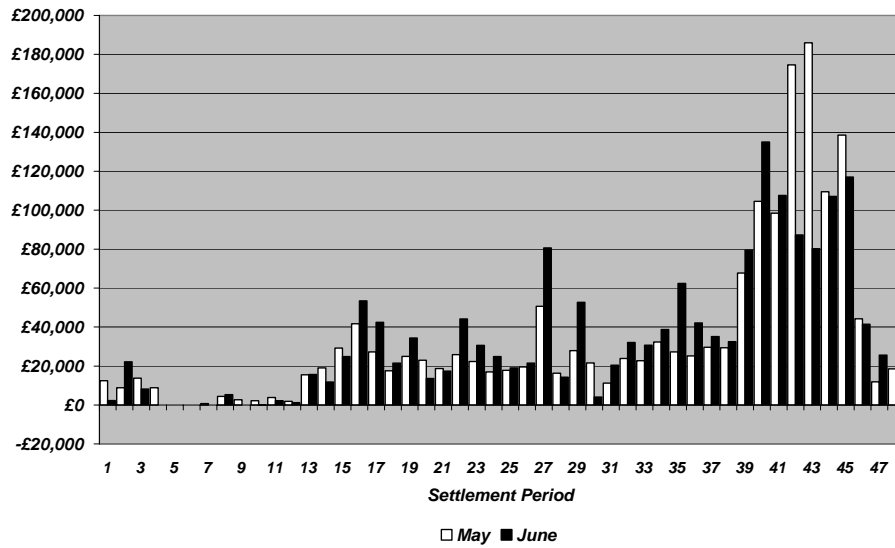


Figure 5

The total volumes of Fast Reserve utilisation of **11.03GWh** for May 2008 and **12.26GWh** for June 2008, broken down into price bands are as follows:

Mag	Price band (£/MWh range)	Volume (MWh)	Average Price (£/MWh)	Cost (£m)
OFFERS	2000 to 99999	0	n/a	n/a
	1000 to 2000	0	n/a	n/a
	300 to 1000	52	420	0.02
	0 to 300	9,640	168	1.62
Total		9.69GWh		£1.64m
BIDS	0 to 300	-1,132	31	-0.03
	-300 to 0	-160	-188	0.03
	-1000 to -300	-42	-392	0.02
	-2000 to -1000	0	n/a	n/a
	-99999 to -2000	0	n/a	n/a
Total		-1.33GWh		£0.01m
Total		11.03GWh		£1.65m

June	Price band (£/MWh range)	Volume (MWh)	Average Price (£/MWh)	Cost (£m)
OFFERS	2000 to 99999	0	n/a	n/a
	1000 to 2000	0	n/a	n/a
	300 to 1000	0	n/a	n/a
	0 to 300	9,630	174	1.68
Total		9.63GWh		£1.68m
BIDS	0 to 300	-2,573	18	-0.05
	-300 to 0	-50	-188	0.01
	-1000 to -300	-10	-400	0.00
	-2000 to -1000	0	n/a	n/a
	-99999 to -2000	0	n/a	n/a
Total		-2.63GWh		£-0.03m
Total		12.26GWh		£1.64m

For the month of August 2008, tenders from eligible Service Providers for firm Fast Reserve should be submitted to National Grid by Monday 14th July 2008 (business day 10). National Grid will notify Service Providers of the outcome of the tender assessment by Monday 21st July 2008 (business day 15).

Tenders should be sent for the attention of:

Bea Ennim
Network Operations
National Grid Electricity Transmission plc
National Grid House
Warwick Technology Park
Gallows Hill
Warwick
CV34 6DA

Tenders can be sent by fax to Bea Ennim on 01926 656612.