

Fast Reserve

Market Information for Tenders for May 2007

National Grid publishes this information, in order to inform potential participants for the Fast Reserve tender round for May 2007.

Fast Reserve Availability

Our indicative requirement for Fast Reserve in May 2007 is shown on a Settlement Period basis in Figure 1. This requirement covers weekdays, Saturdays, Sundays and Bank Holidays.

Fast Reserve Daily Requirement for May 2007

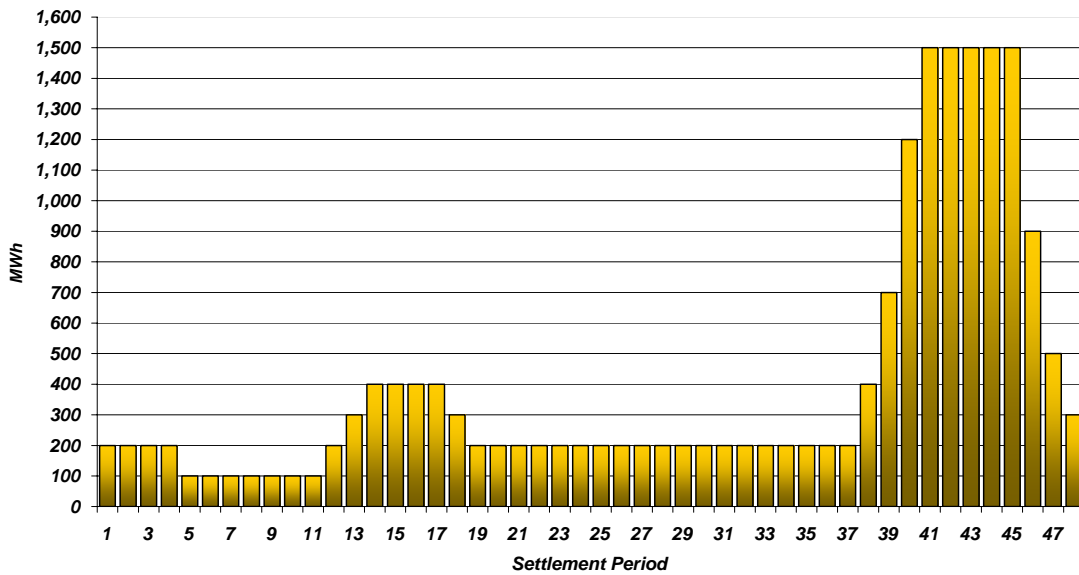


Figure 1

Figure 1 gives an indication of the times of day when Fast Reserve is most useful to National Grid. The actual amount of Fast Reserve "holding" varies from day to day, according to system conditions.

Fast Reserve Utilisation

Figure 2 shows the daily utilisation of Fast Reserve in the BM and elsewhere during February 2007 and March 2007. The BM information is based on the aggregate of Offers plus Bids accepted to provide Fast Reserve or an equivalent service.

Daily Accepted Fast Reserve Volume

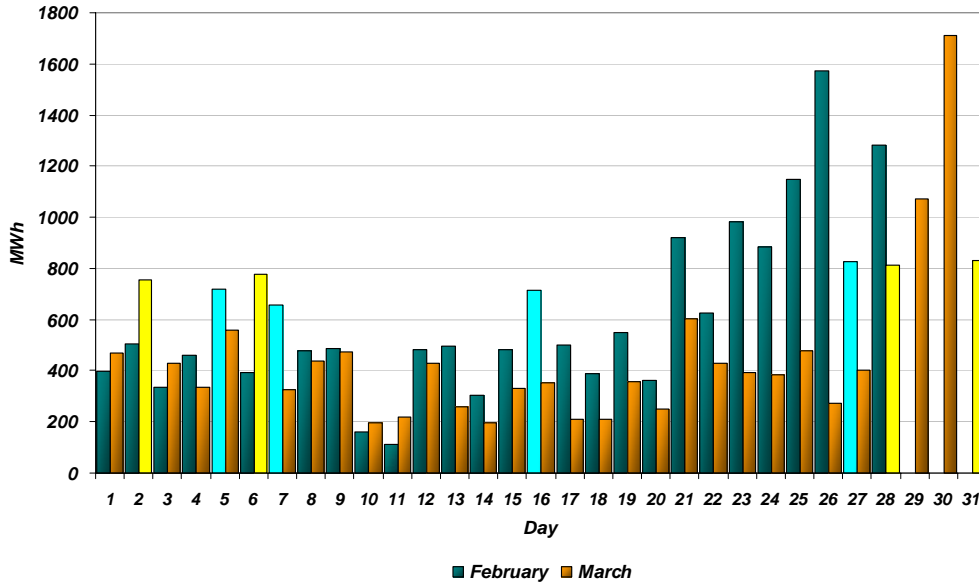


Figure 2

Figure 3 represents this data as total utilisation by Settlement Period across each month. This shows the daily profile of Fast Reserve utilisation.

Period Accepted Fast Reserve Volume

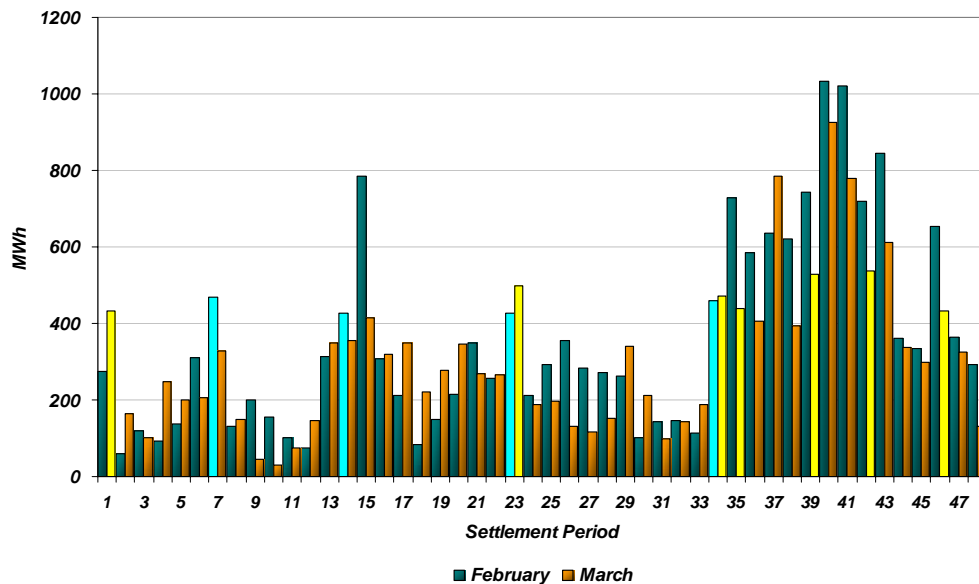


Figure 3

Figure 4 represents the same historical data, as an average utilisation price per Settlement Period for each month.

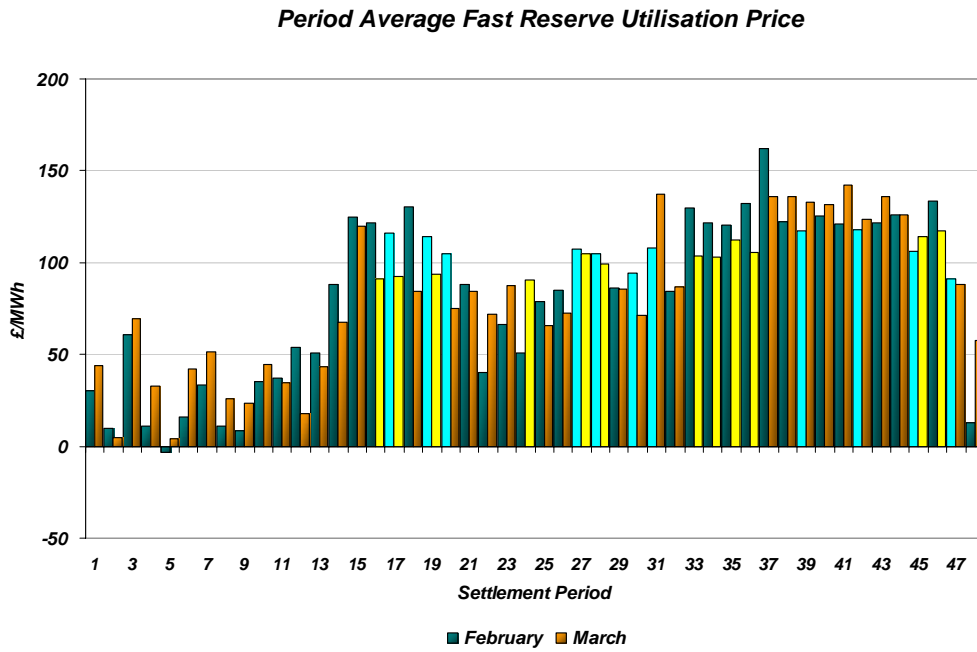


Figure 4

Finally, the same data is used in Figure 5, below, to show the profile of total Fast Reserve utilisation expenditure per Settlement Period for each month.

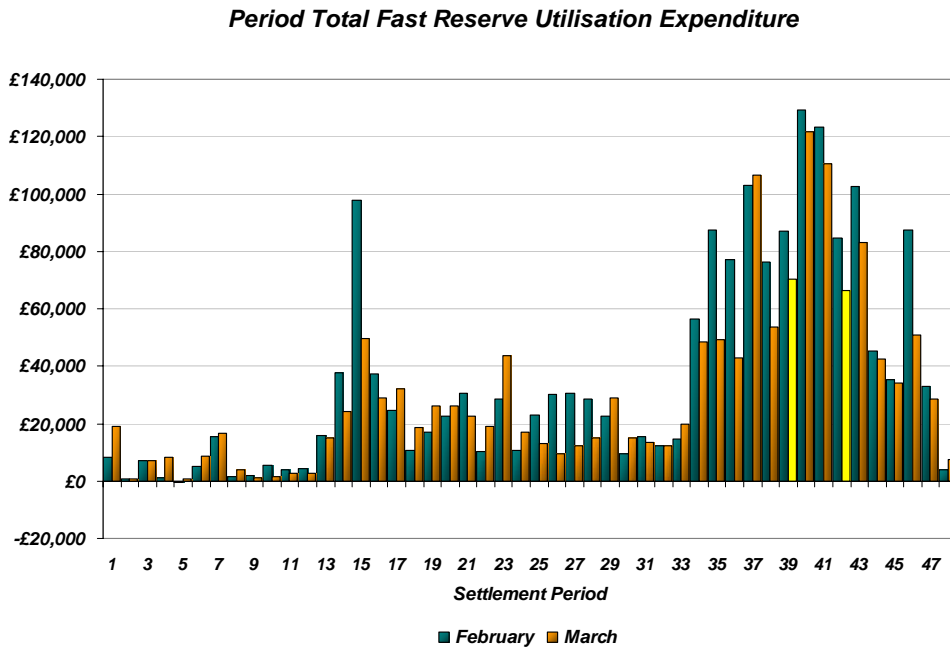


Figure 5

The total volumes of Fast Reserve utilisation of **17.22GWh** for February and **14.98GWh** for March, broken down into price bands are as follows:

February	Price band (£/MWh range)	Volume (MWh)	Average Price (£/MWh)	Cost (£m)
OFFERS	2000 to 99999	0	n/a	n/a
	1000 to 2000	0	n/a	n/a
	300 to 1000	15	350	0.01
	0 to 300	13,665	119	1.63
Total		13.68GWh		£1.63m
BIDS	0 to 300	-2,942	10	-0.03
	-300 to 0	-542	-141	0.08
	-1000 to -300	-60	-600	0.04
	-2000 to -1000	0	n/a	n/a
	-99999 to -2000	0	n/a	n/a
Total		-3.54GWh		£0.08m
Total		17.22GWh		£1.72m

March	Price band (£/MWh range)	Volume (MWh)	Average Price (£/MWh)	Cost (£m)
OFFERS	2000 to 99999	0	n/a	n/a
	1000 to 2000	0	n/a	n/a
	300 to 1000	0	n/a	n/a
	0 to 300	13,165	107	1.41
Total		13.17GWh		£1.41m
BIDS	0 to 300	-1,488	8	-0.01
	-300 to 0	-283	-144	0.04
	-1000 to -300	-24	-589	0.01
	-2000 to -1000	0	n/a	n/a
	-99999 to -2000	0	n/a	n/a
Total		-1.8GWh		£0.04m
Total		14.96GWh		£1.45m

For the month of **May 2007**, tenders from eligible Service Providers for firm Fast Reserve should be submitted to National Grid by Tuesday 17th April 2007 (business day 10). National Grid will notify Service Providers of the outcome of the tender assessment by Tuesday 24th April 2007 (business day 15).

Tenders should be sent for the attention of:

Bea Ennim
Network Operations
National Grid Electricity Transmission plc
National Grid House
Warwick Technology Park
Gallows Hill
Warwick
CV34 6DA

Tenders can be sent by fax to Bea Ennim on 01926 656612.