

Fast Reserve

Market Information for Tenders for December 2007

National Grid publishes this information, in order to inform potential participants for the Fast Reserve tender round for December 2007.

Fast Reserve Availability

Our indicative requirement for Fast Reserve in December 2007 is shown on a Settlement Period basis in Figure 1. This requirement covers weekdays, Saturdays, Sundays and Bank Holidays.

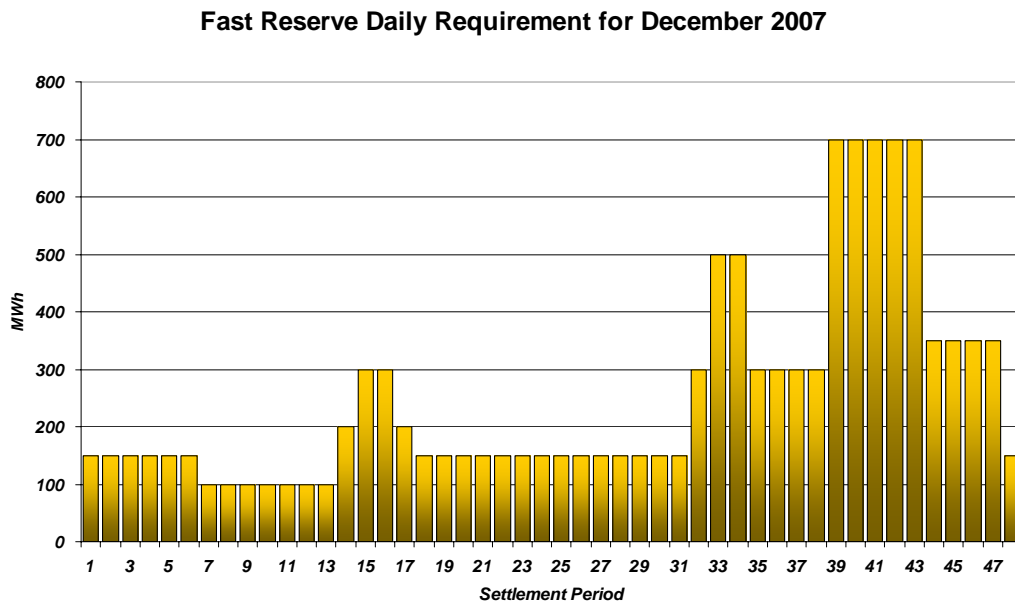


Figure 1

Figure 1 gives an indication of the times of day when Fast Reserve is most useful to National Grid. The actual amount of Fast Reserve "holding" varies from day to day, according to system conditions.

Fast Reserve Utilisation

Figure 2 shows the daily utilisation of Fast Reserve in the BM and elsewhere during September 2007 and October 2007. The BM information is based on the aggregate of Offers plus Bids accepted to provide Fast Reserve or an equivalent service.

Daily Accepted Fast Reserve Volume

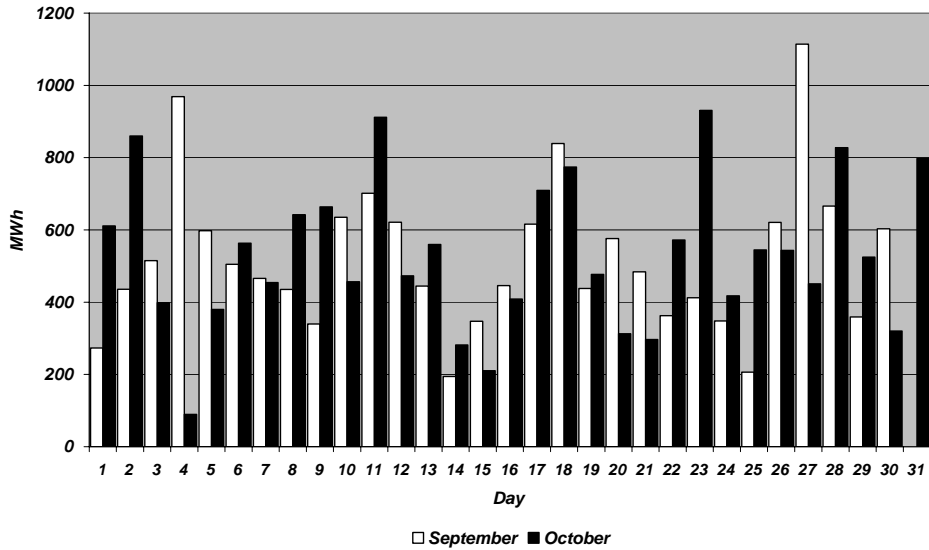


Figure 2

Figure 3 represents this data as total utilisation by Settlement Period across each month. This shows the daily profile of Fast Reserve utilisation.

Period Accepted Fast Reserve Volume

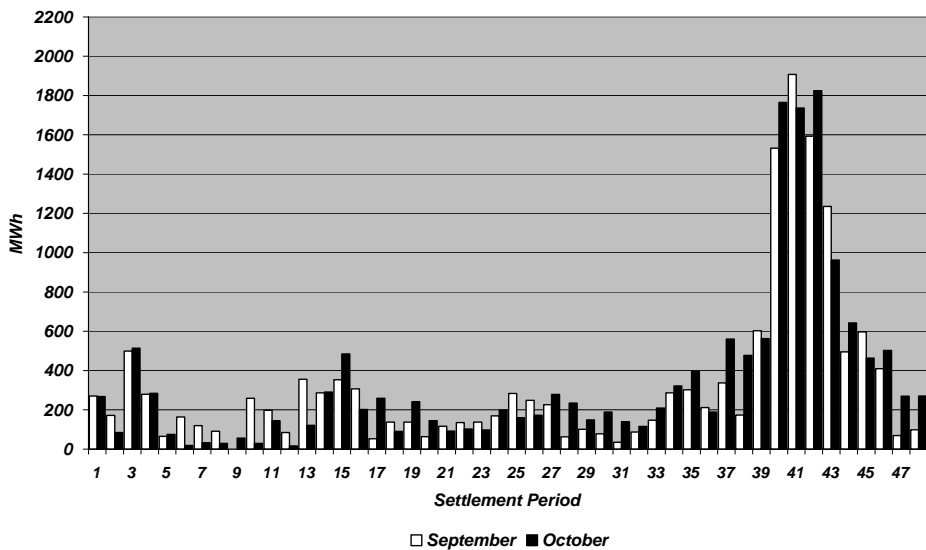


Figure 3

Figure 4 represents the same historical data, as an average utilisation price per Settlement Period for each month.

Period Average Fast Reserve Utilisation Price

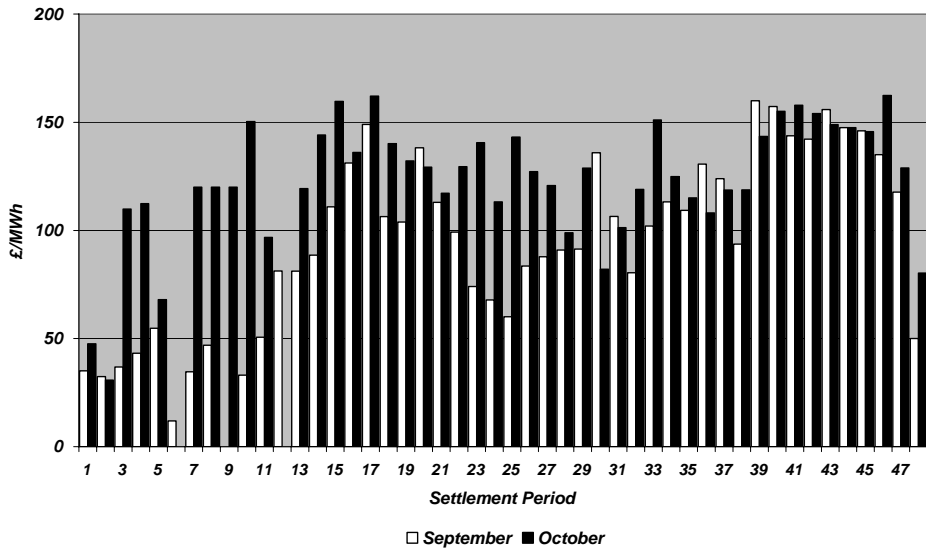


Figure 4

Finally, the same data is used in Figure 5, below, to show the profile of total Fast Reserve utilisation expenditure per Settlement Period for each month.

Period Total Fast Reserve Utilisation Expenditure

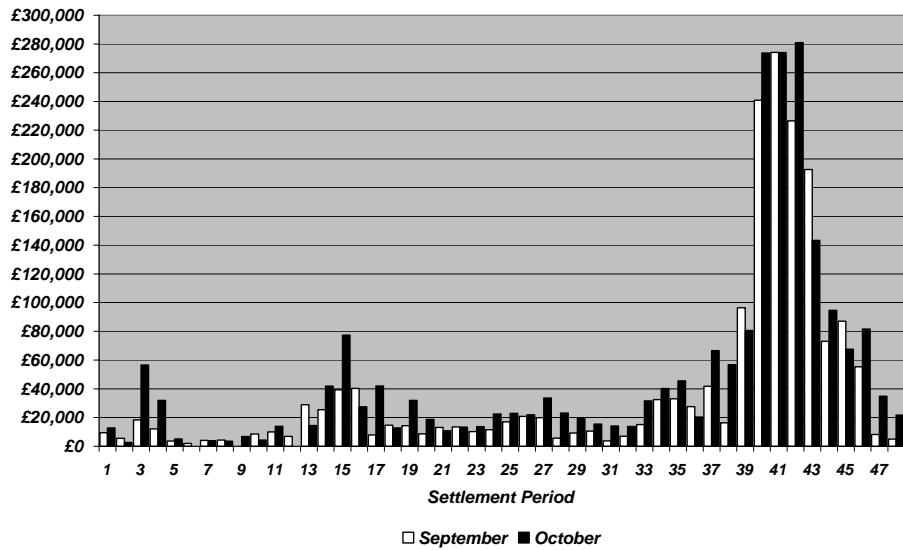


Figure 5

The total volumes of Fast Reserve utilisation of **15.6GWh** for September 2007 and **16.5GWh** for October 2007, broken down into price bands are as follows:

September	Price band (£/MWh range)	Volume (MWh)	Average Price (£/MWh)	Cost (£m)
	2000 to 99999	0	n/a	n/a
OFFERS	1000 to 2000	0	n/a	n/a
	300 to 1000	38	344	0.01
	0 to 300	13,691	123	1.68
Total		13.73GWh		£1.69m
	0 to 300	-1,018	14	-0.01
BIDS	-300 to 0	-806	-181	0.15
	-1000 to -300	-16	-450	0.01
	-2000 to -1000	0	n/a	n/a
	-99999 to -2000	0	n/a	n/a
Total		-1.84GWh		£0.14m
Total		15.57GWh		£1.83m

October	Price band (£/MWh range)	Volume (MWh)	Average Price (£/MWh)	Cost (£m)
	2000 to 99999	0	n/a	n/a
OFFERS	1000 to 2000	0	n/a	n/a
	300 to 1000	16	377	0.01
	0 to 300	14,495	147	2.13
Total		14.51GWh		£2.14m
	0 to 300	-1,263	17	-0.02
BIDS	-300 to 0	-656	-180	0.12
	-1000 to -300	-31	-382	0.01
	-2000 to -1000	0	n/a	n/a
	-99999 to -2000	0	n/a	n/a
Total		-1.95GWh		£0.11m
Total		16.46GWh		£2.25m

For the month of December 2007, tenders from eligible Service Providers for firm Fast Reserve should be submitted to National Grid by Thursday 14th November 2007 (business day 10). National Grid will notify Service Providers of the outcome of the tender assessment by Thursday 21st November 2007 (business day 15).

Tenders should be sent for the attention of:

Bea Ennim
Network Operations
National Grid Electricity Transmission plc
National Grid House
Warwick Technology Park
Gallows Hill
Warwick
CV34 6DA

Tenders can be sent by fax to Bea Ennim on 01926 656612.