

Fast Reserve

Market Information for Tenders for November 2003

National Grid Transco publishes this information, in order to inform potential participants for the Fast Reserve tender round for November 2003.

Fast Reserve Availability

Our indicative daily requirement for Fast Reserve in November is shown on a Settlement Period basis in Figure 1. This requirement covers weekdays, Saturdays and Sundays.

Fast Reserve Daily Requirement for November

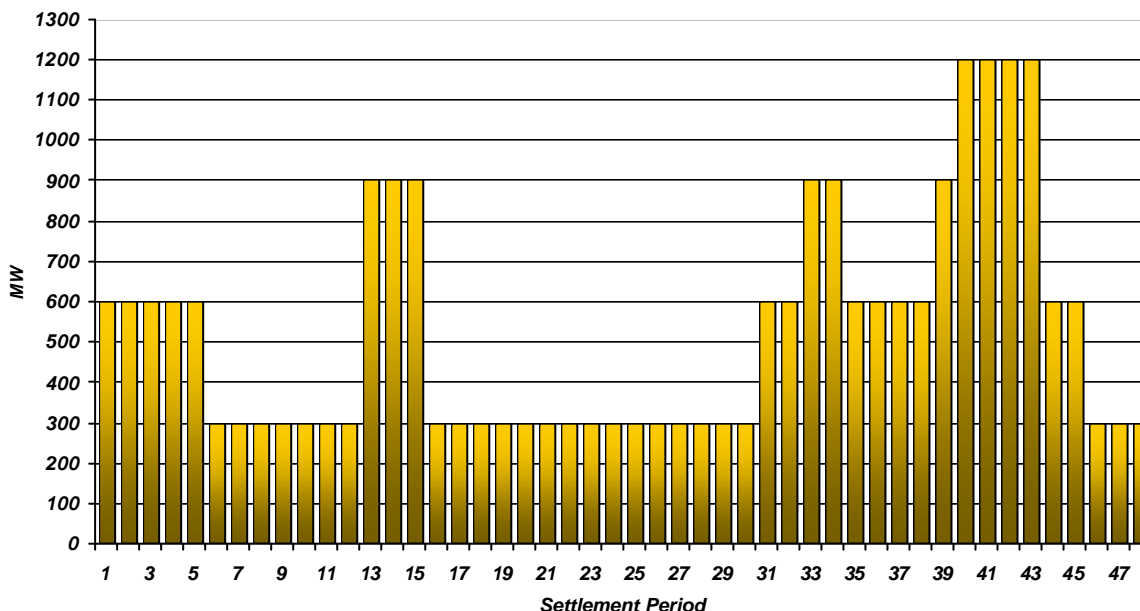


Figure 1

This figure gives an indication of the times of day when Fast Reserve is most useful to us. The actual amount of Fast Reserve "holding" varies from day to day, according to system conditions, but on average amounts to approximately one half of these requirements.

Fast Reserve Utilisation

Figure 2 shows the daily utilisation of Fast Reserve in the BM and elsewhere during August (1st – 31st August 2003) and September (1st – 30th September 2003). The BM information is based on the aggregate of Offers plus |Bids| accepted to provide Fast Reserve.

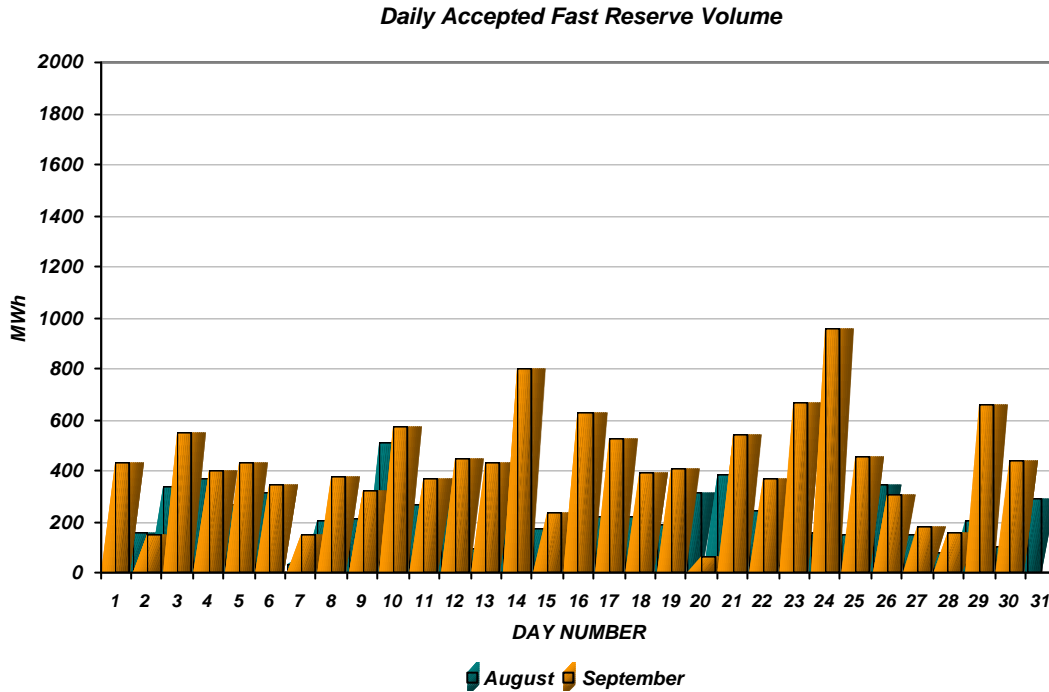


Figure 2

Figure 3 re-presents this data, as an average utilisation per Settlement Period across each month. This shows the daily profile of Fast Reserve utilisation.

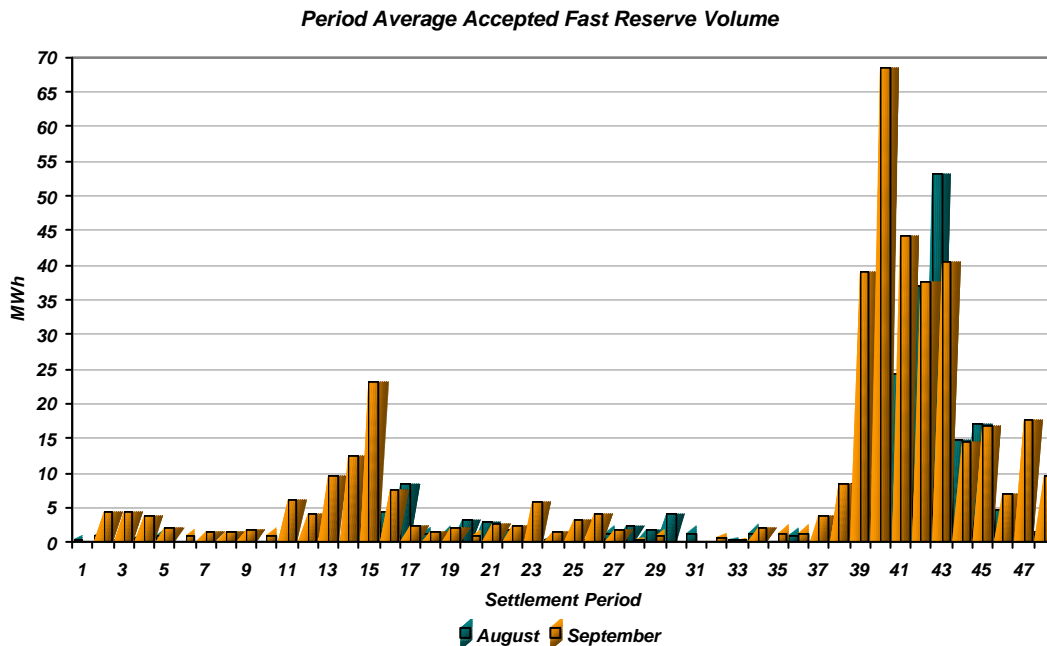


Figure 3

The total volumes of Fast Reserve utilisation of **7.0 GWh** for August and **12.8 GWh** for September break down into price bands as follows:

August	Price band (£/MWh range)	Volume (MWh)	Average Price (£/MWh)	Cost (£m)
OFFERS	2000 to 10000	0	n/a	n/a
	1000 to 2000	43	1,728	0.07
	300 to 1000	153	329	0.05
	0 to 300	6,760	131	0.88
Total		7.0 GWh		£1.01 m
BIDS	0 to 300	0	n/a	n/a
	-300 to 0	-25	-128	0.00
	-1000 to -300	-27	-665	0.02
	-2000 to -1000	-28	-1,728	0.05
	-10000 to -2000	0	n/a	n/a
Total		-0.1 GWh		£0.07 m
Total		7.0 GWh		£1.08 m

September	Price band (£/MWh range)	Volume (MWh)	Average Price (£/MWh)	Cost (£m)
OFFERS	2000 to 10000	0	n/a	n/a
	1000 to 2000	4	1,728	0.01
	300 to 1000	3	500	0.00
	0 to 300	11,344	127	1.44
Total		11.4 GWh		£1.45 m
BIDS	0 to 300	0	n/a	n/a
	-300 to 0	-1,317	-60	0.08
	-1000 to -300	-133	-722	0.10
	-2000 to -1000	-9	-1,728	0.02
	-10000 to -2000	0	n/a	n/a
Total		-1.5 GWh		£0.19 m
Total		12.8 GWh		£1.64 m

The above charts and tables show that from August to September overall Fast Reserve spend rose by ~50% as a result of higher utilisation.

For November, the demand shape will display predominantly winter characteristics. Fast Reserve utilisation patterns for November are expected to be similar to those seen in November 2002. Overall Fast Reserve utilisation is forecast to outturn similar to November/December 2002.

For the month of **November**, tenders from eligible Service Providers for a firm Fast Reserve service should be submitted to National Grid by close of business on Tuesday 14th October 2003. National Grid Transco will notify Service Providers of the outcome of the tender assessment by Tuesday 21st October 2003.

Tenders should be sent for the attention of:

Paul Bagg
Contracts & Trading
National Grid Transco plc
National Grid House
Kirby Corner Road
Coventry
CV4 8JY

Tenders can be sent by fax to Paul Bagg on 024 7642 3114.