

# Winter Review 2005/06

---

Operational Forum

10<sup>th</sup> May 2006

# Significant SO Actions this Winter

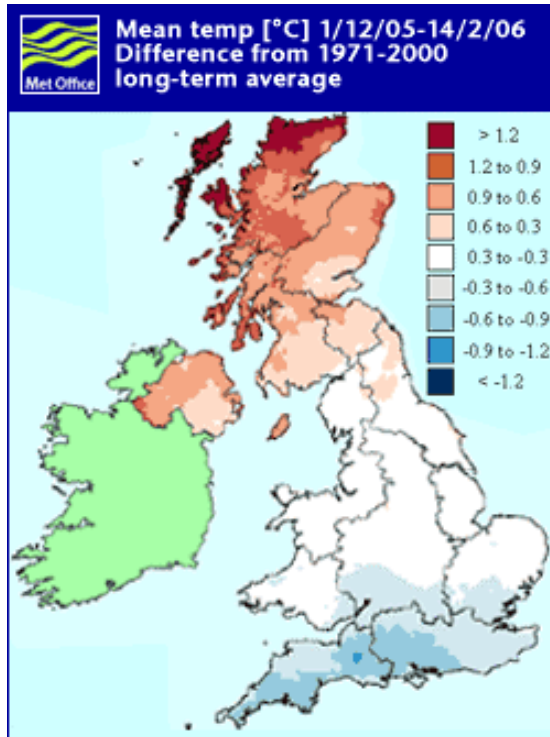
---

- ◆ Two revisions to Gas Safety Monitors
- ◆ First use of Gas Balancing Alert (GBA)
  
- ◆ Root of SO actions
  - ◆ Combination of factors:
    - ◆ Low IUK flows in early part of winter
    - ◆ Loss of Rough on 16<sup>th</sup> February
    - ◆ Cold Snaps in February and March

# Winter 2005/06 - Demand

---

# UK Temperatures – close to average



Winter 2005/06 was 1:4 Warm

The Coldest day in the winter was 29<sup>th</sup> December 2005 which was 1:3 Warm

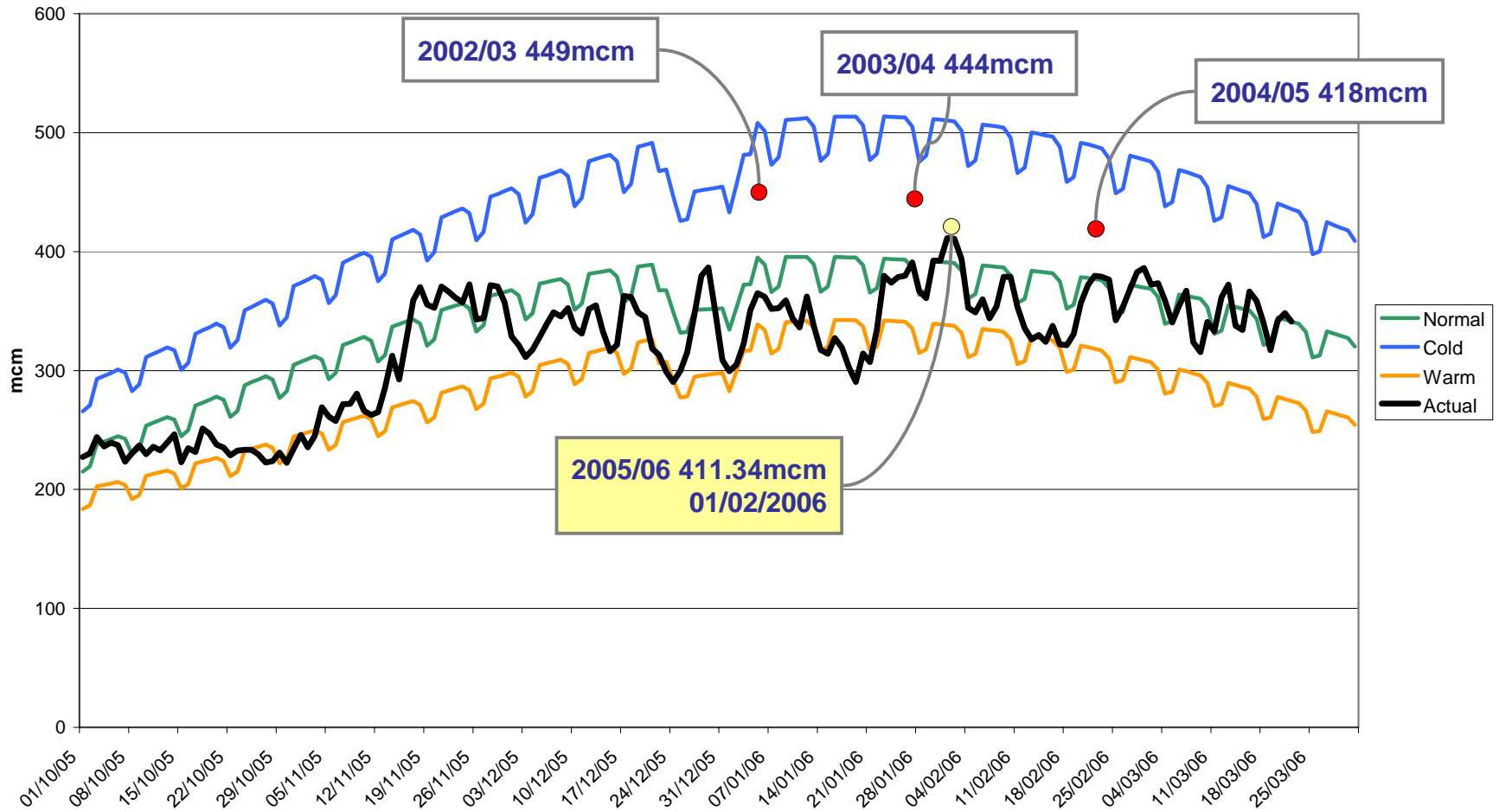
## UK temperatures

As figures for February continue to come in, there remains marked differences in temperature across the country, e.g. from 1 December 2005 to 14 February 2006 the mean temperature for Scotland was **0.9 °C above** average, while across parts of southern England it was **0.4 °C below** average. The mean temperature for the UK was 3.9 °C which is **0.2 °C above** average, but interestingly southern England has experienced its coldest December and January combined since 1996/1997.

Source: Met Office

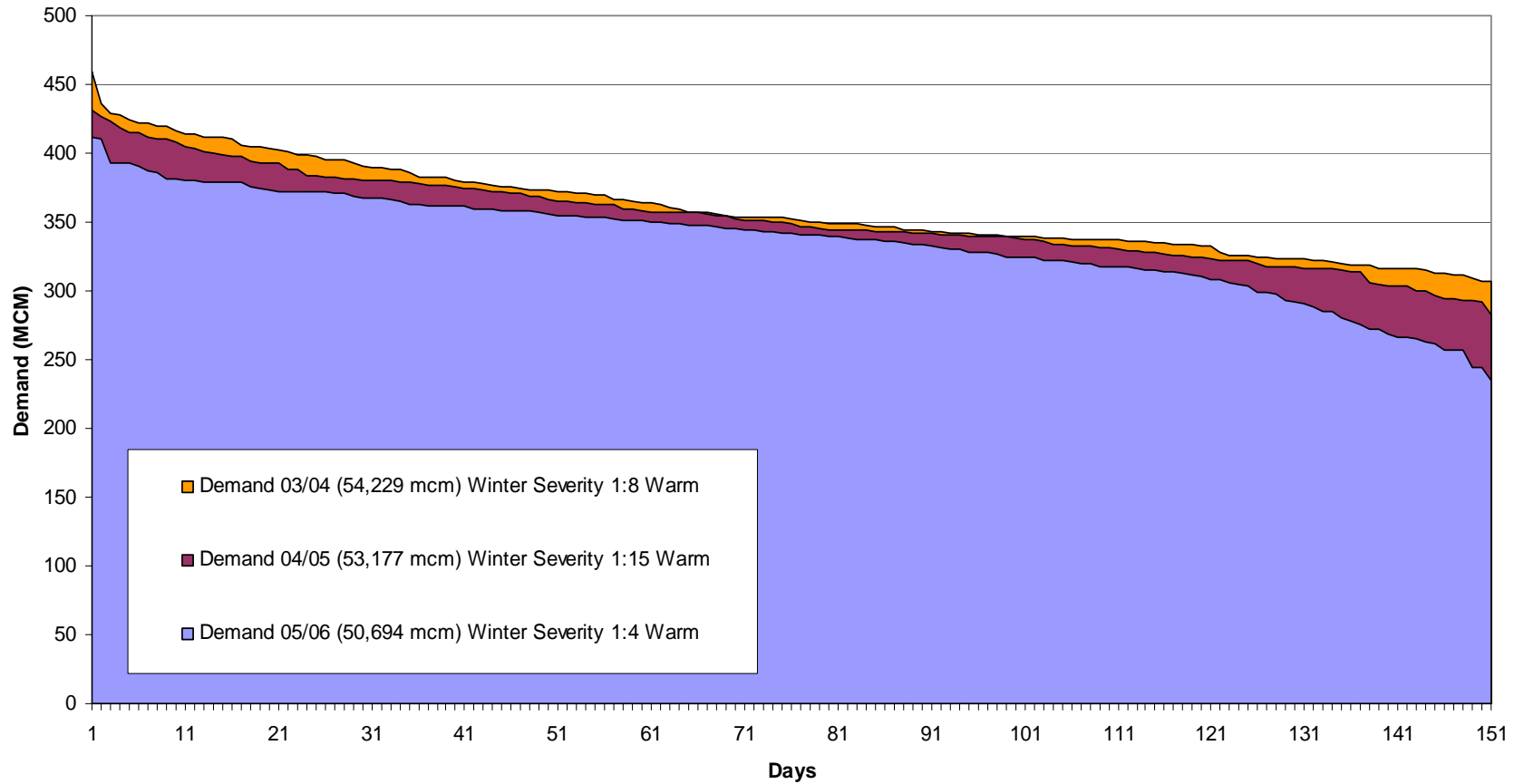
**nationalgrid**

# 2005/06 Demand Curve



# 2005/06 Demand

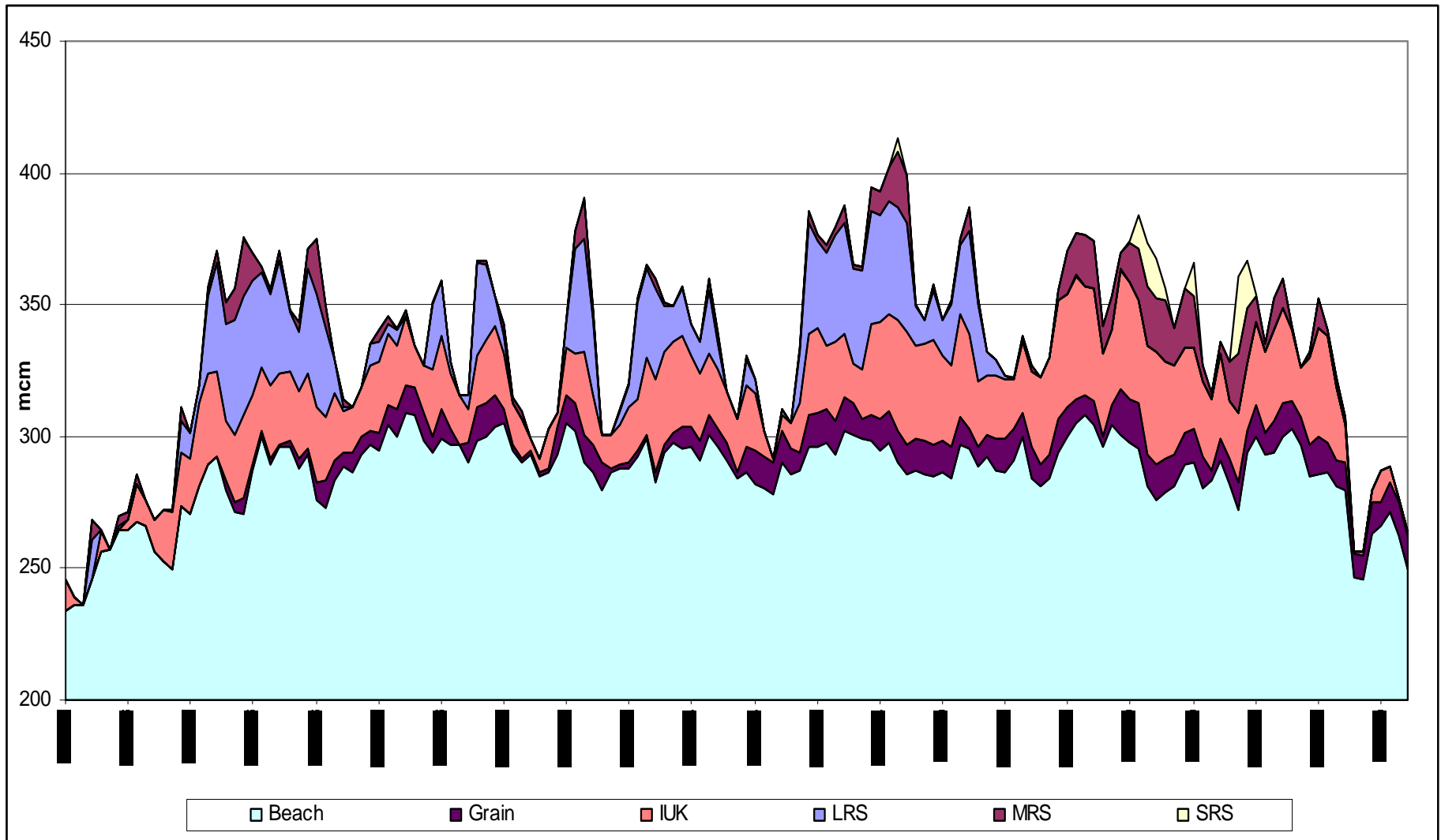
Demand Load Duration 03/04-05/06



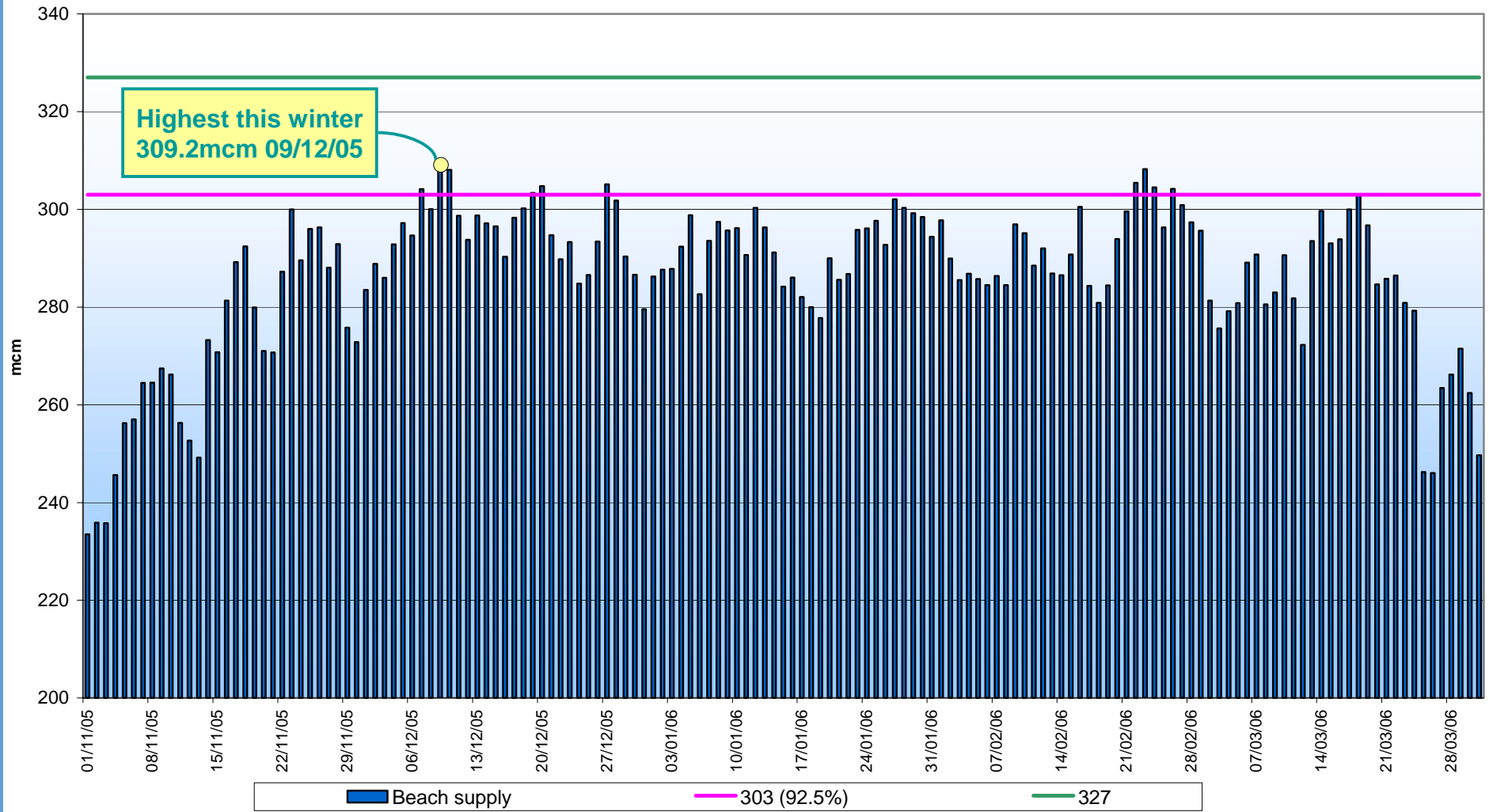
# Winter 2005/06 - Supply

---

# Supply Overview

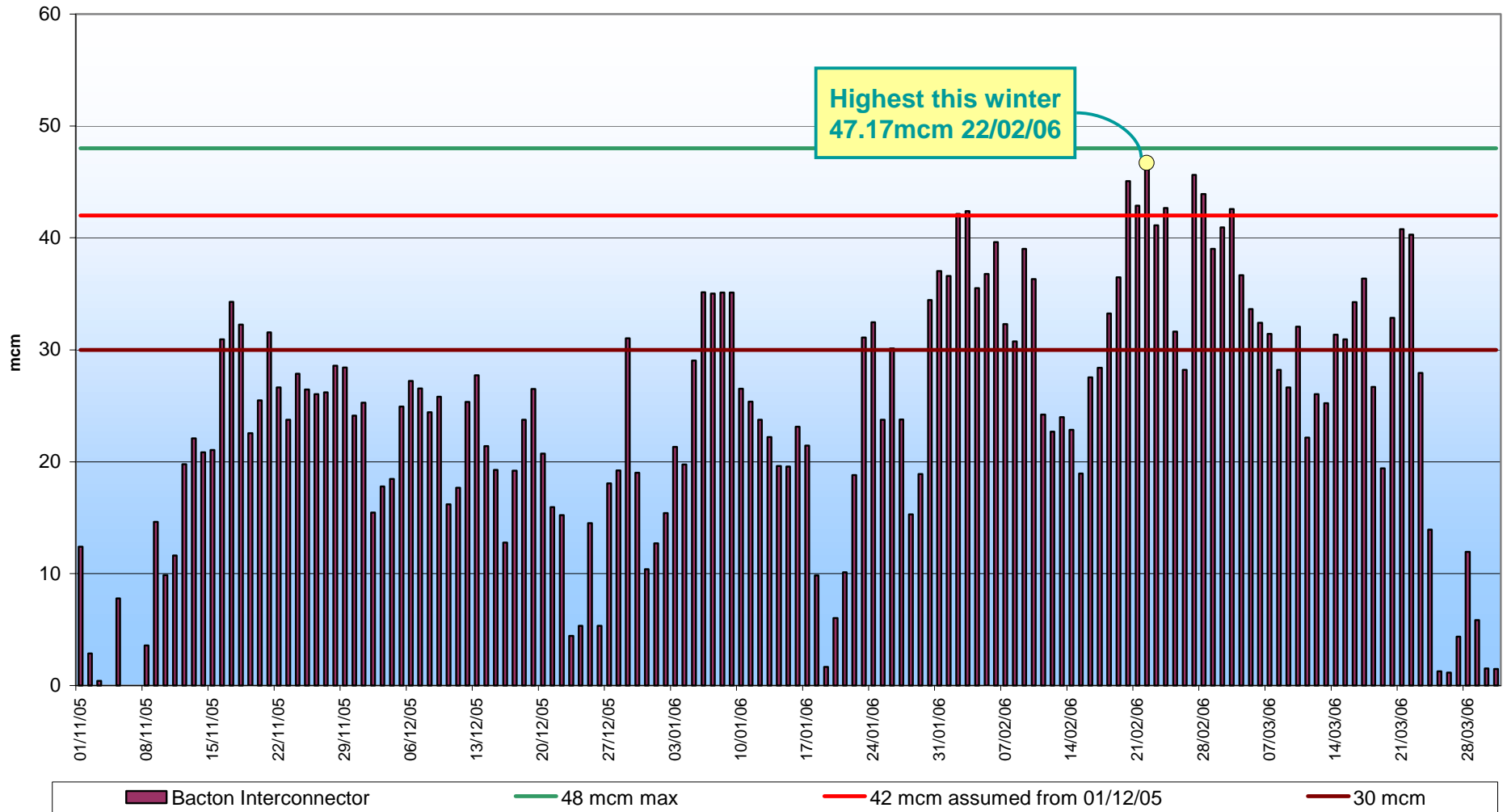


# Beach Supplies



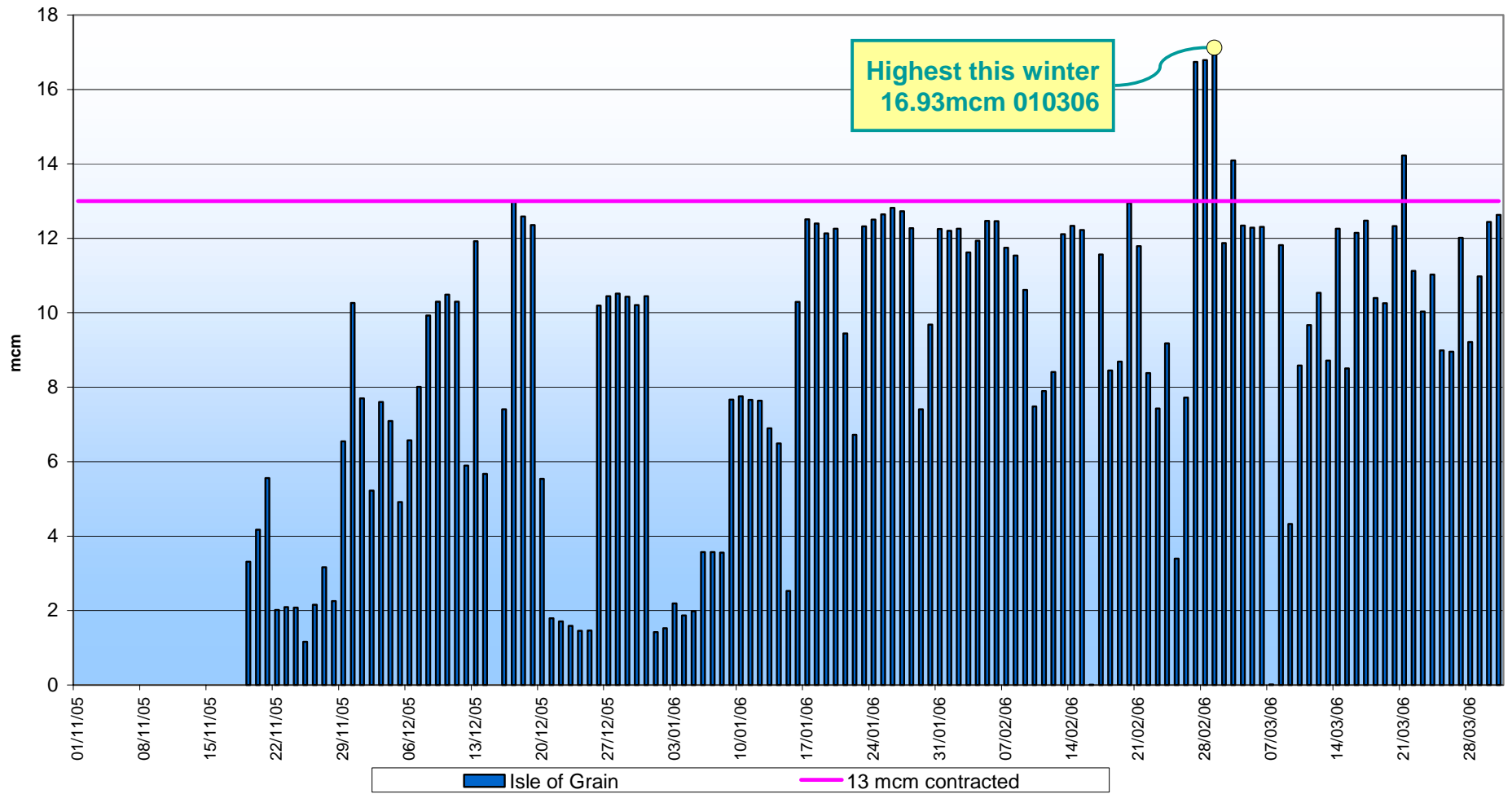
	Nov	Dec	Jan	Feb	Mar
Monthly Ave (mcm)	270.4	295.2	291.8	292.8	280.7

# Interconnector



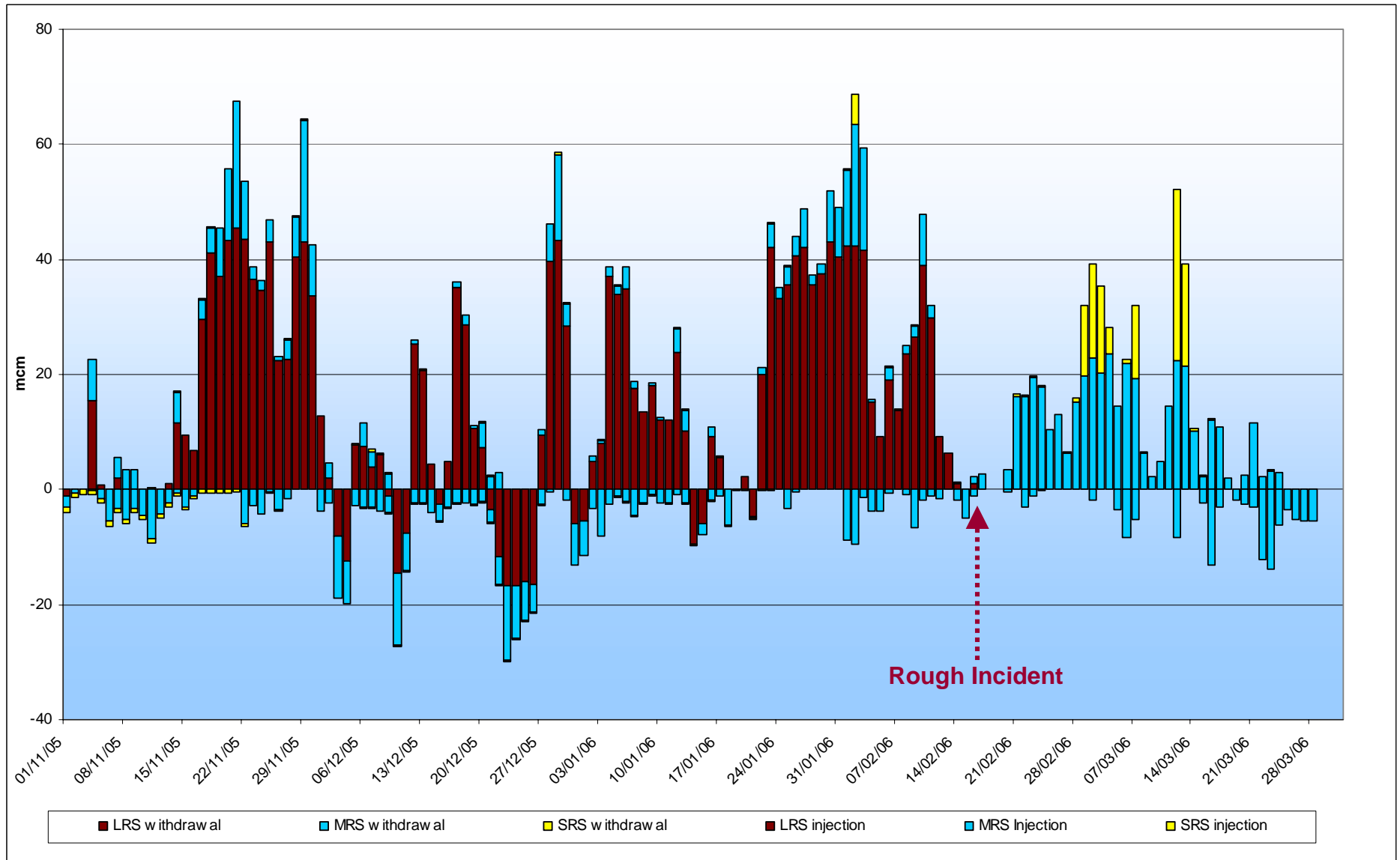
	Nov	Dec	Jan	Feb	Mar
Monthly Ave (mcm)	18.7	19.2	23.0	34.9	25.1

# Isle of Grain



	Nov	Dec	Jan	Feb	Mar
Monthly Ave (mcm)	1.5	7.5	8.0	10.7	11.2

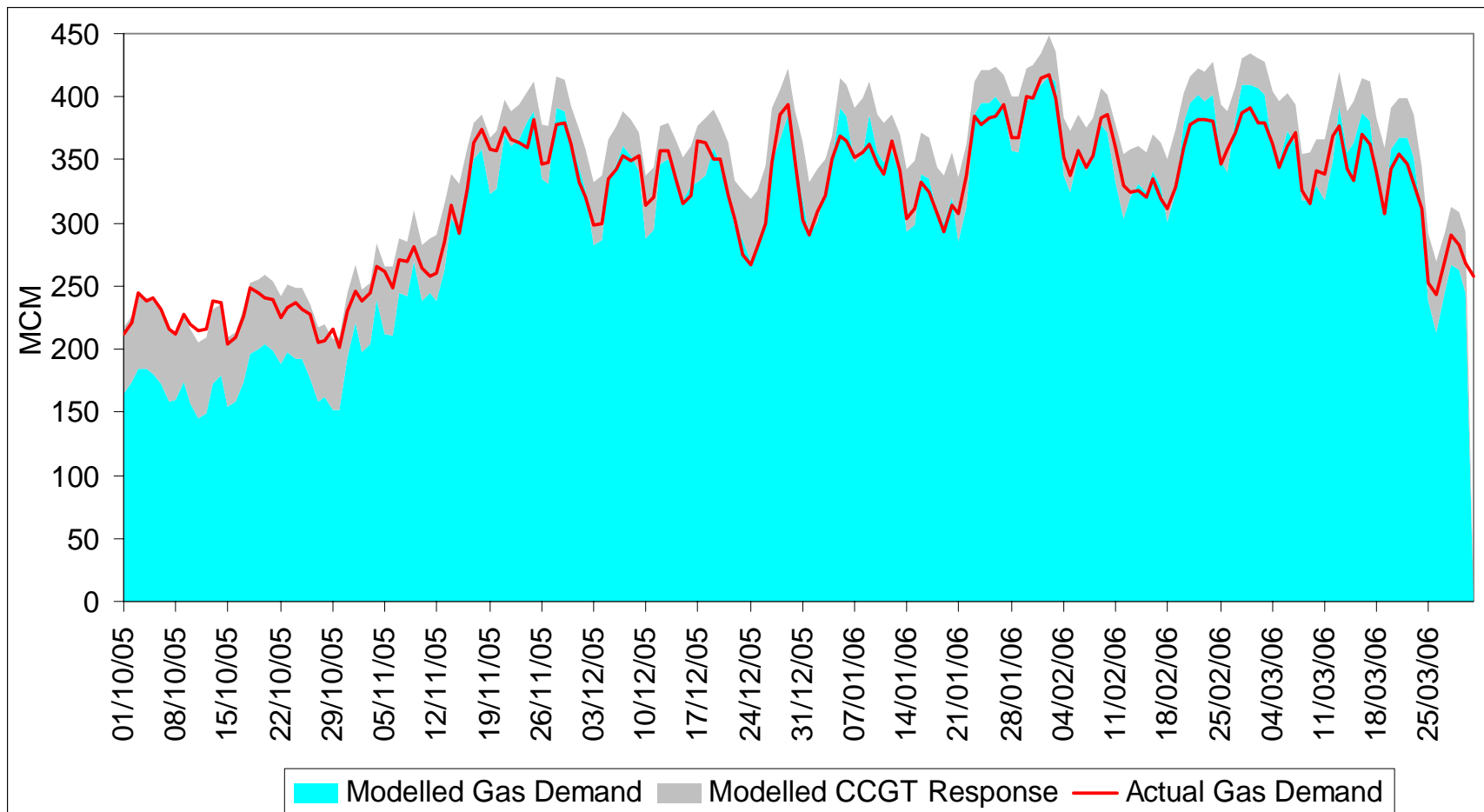
# Storage Behaviour



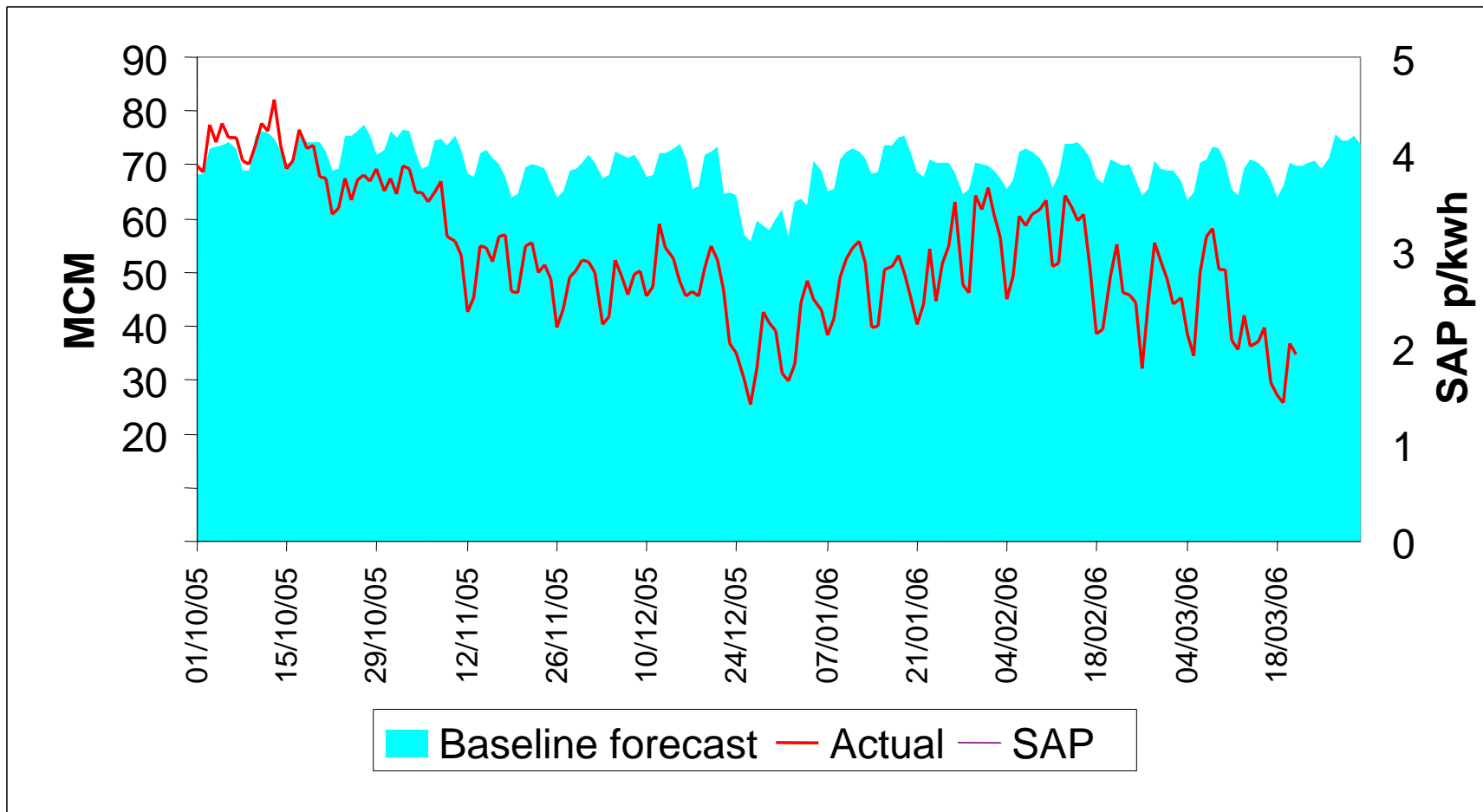
# Demand Response Activity

---

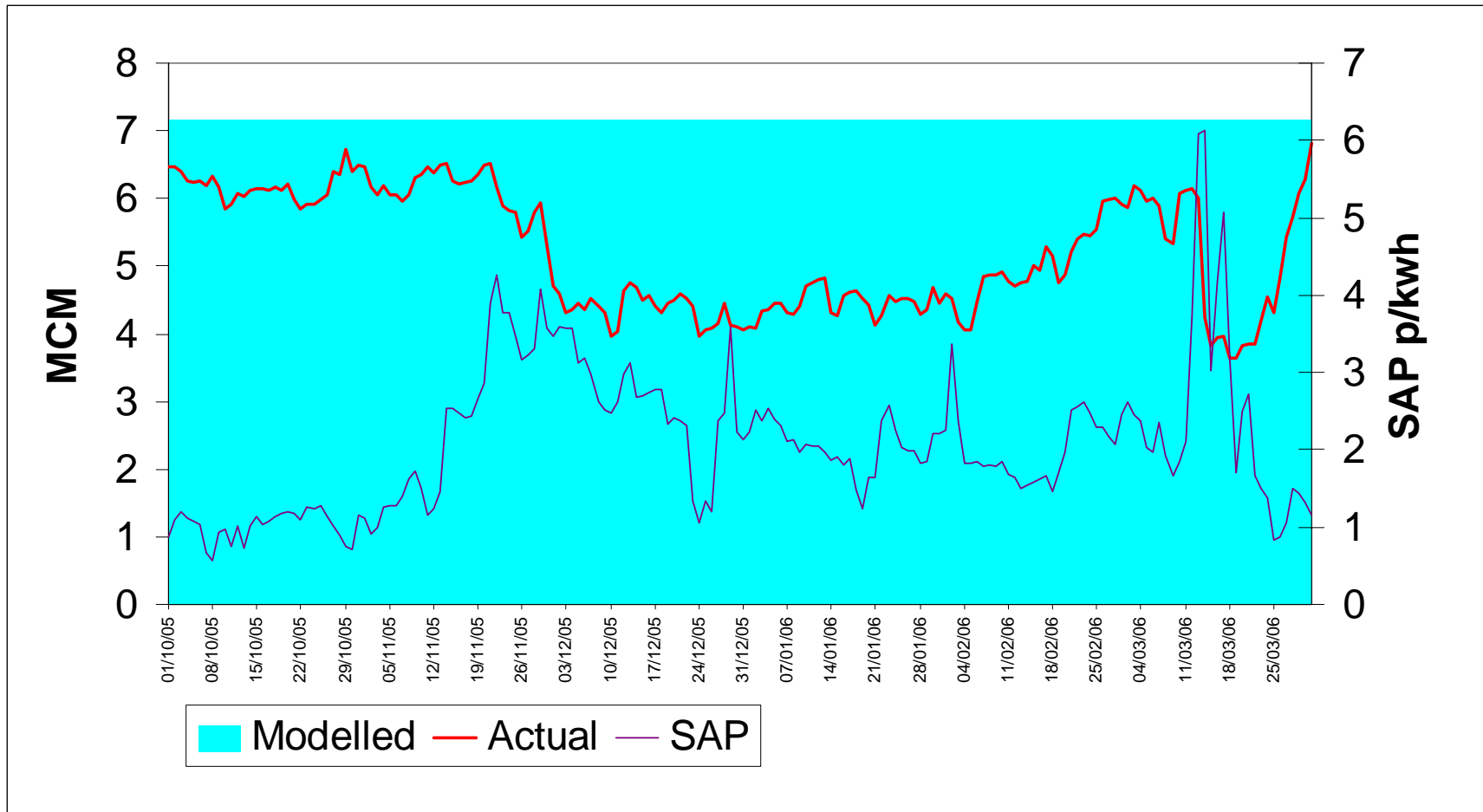
# 2005/06 Actual Demand compared to Winter Outlook Simulation



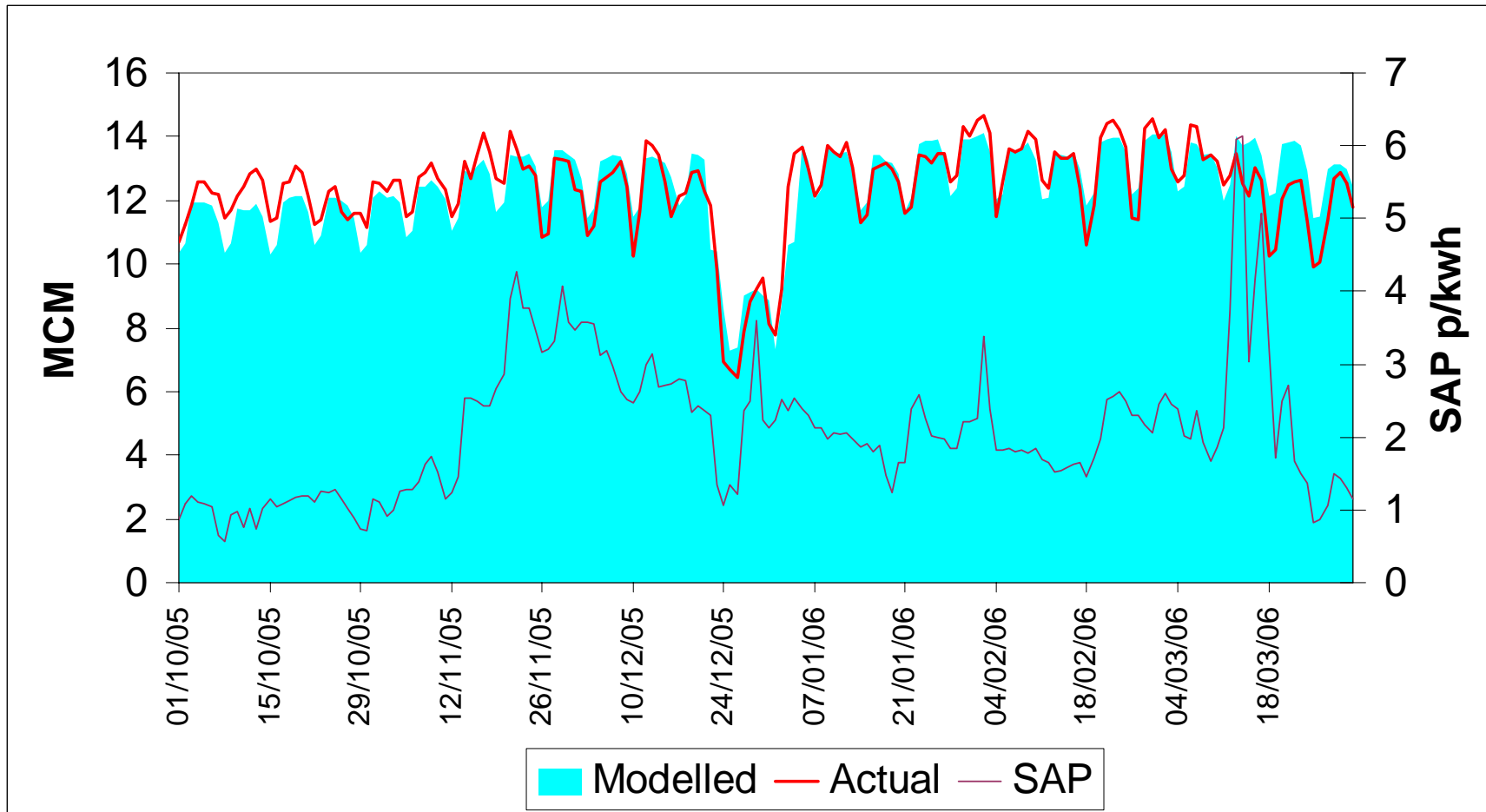
# Gas Power Stations connected to the National Grid Transmission System



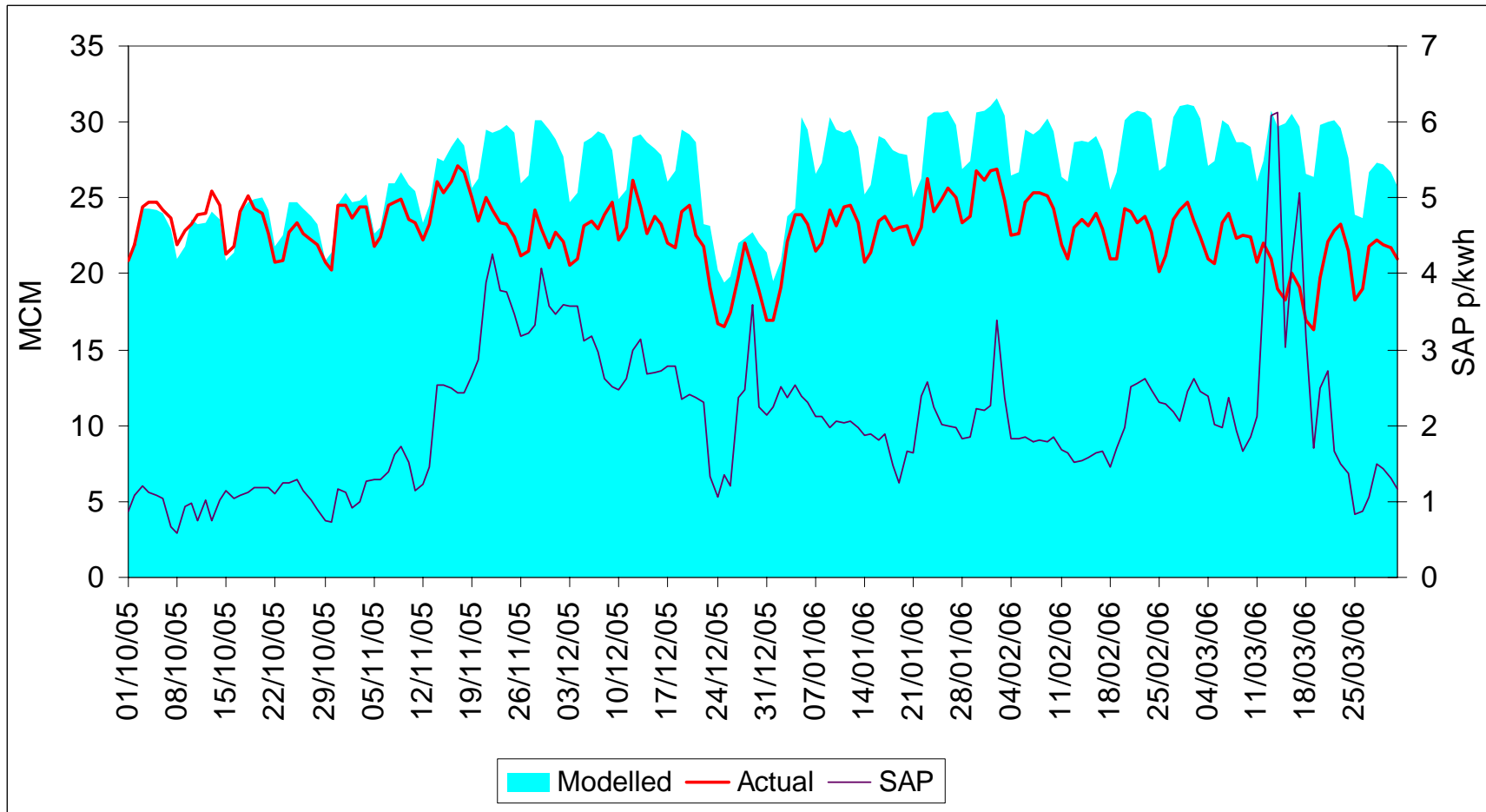
# NTS Industrial Loads



# LDZ Daily Metered (DM) Firm



# LDZ Daily Metered (DM) Interruptible



# Safety Monitors

---

# Safety Monitor Levels this winter

---

- ◆ Monitors originally set in September 2005
- ◆ In December they were updated based on winter experience to date
- ◆ Following observed performance on IUK, National Grid reallocated the supply risk it had built into the September 2005 LRS Monitor
- ◆ Following confirmation of duration of the loss of Rough supplies National Grid again revised the monitors in March 2006.

# Safety Monitor Level Changes

Storage Type	September Requirement		December Requirement		March Requirement*	
	(GWh)	(% of Space)	(GWh)	(% of Space)	(GWh)	(% of Space)
<b>Long</b>	7806	22.9%	6987	20.5%	625.9	1.8%
<b>Medium</b>	933	12.7%	1202	16.4%	447.7	6.0%
<b>Short</b>	459	26.4%	700	40.2%	128.7	7.1%
<b>Total</b>	9198	21.3%	8889	20.6%	1202.3	2.7%

\* - as at 09/03/06

# Incident at Rough Gas Storage Facility

16<sup>th</sup> February 2006



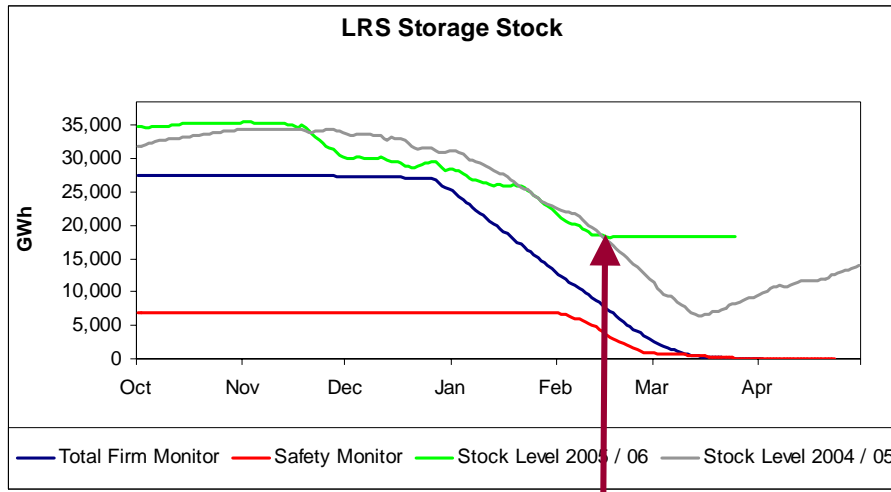
Picture © The Scotsman

**As a result of an incident on the Rough 3B Platform, the Rough Gas Storage Facility has been unavailable since 16<sup>th</sup> February 2006.**

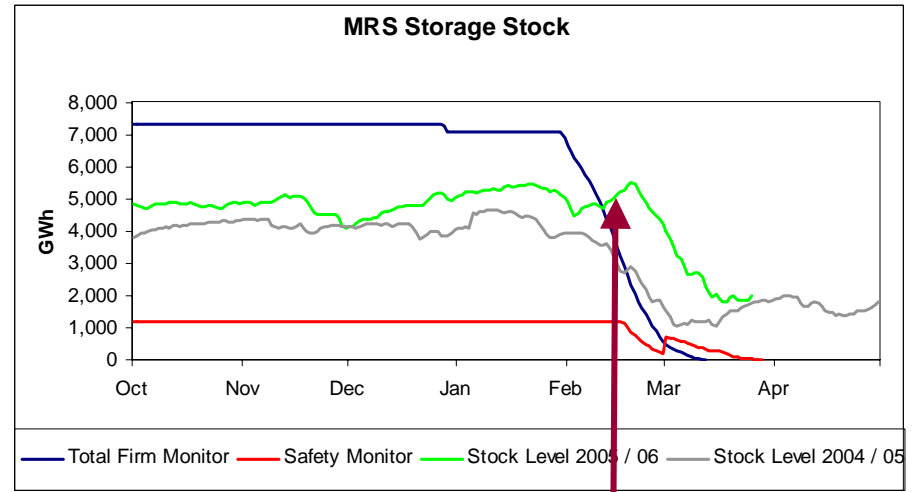
**The loss of Rough resulted in greater use of SRS(LNG) and MRS storage in mid March**

**nationalgrid**

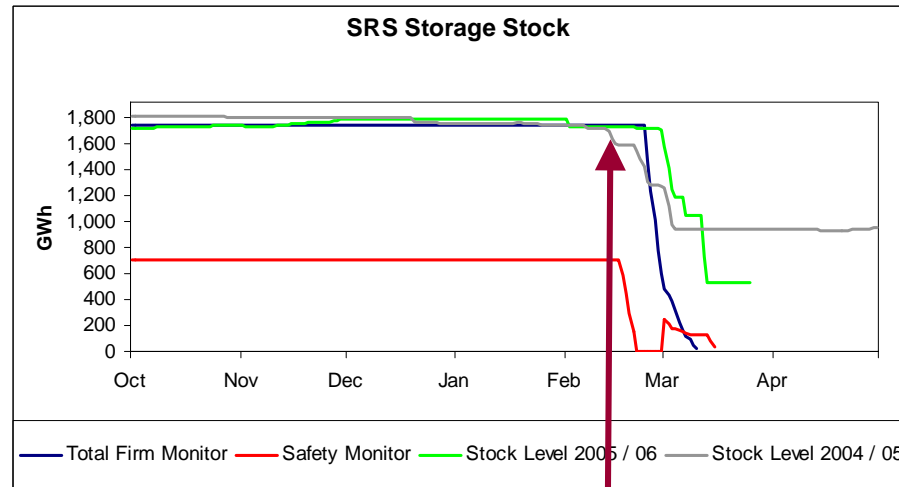
# Storage Position



16<sup>th</sup> February – Rough Incident



16<sup>th</sup> February – Rough Incident



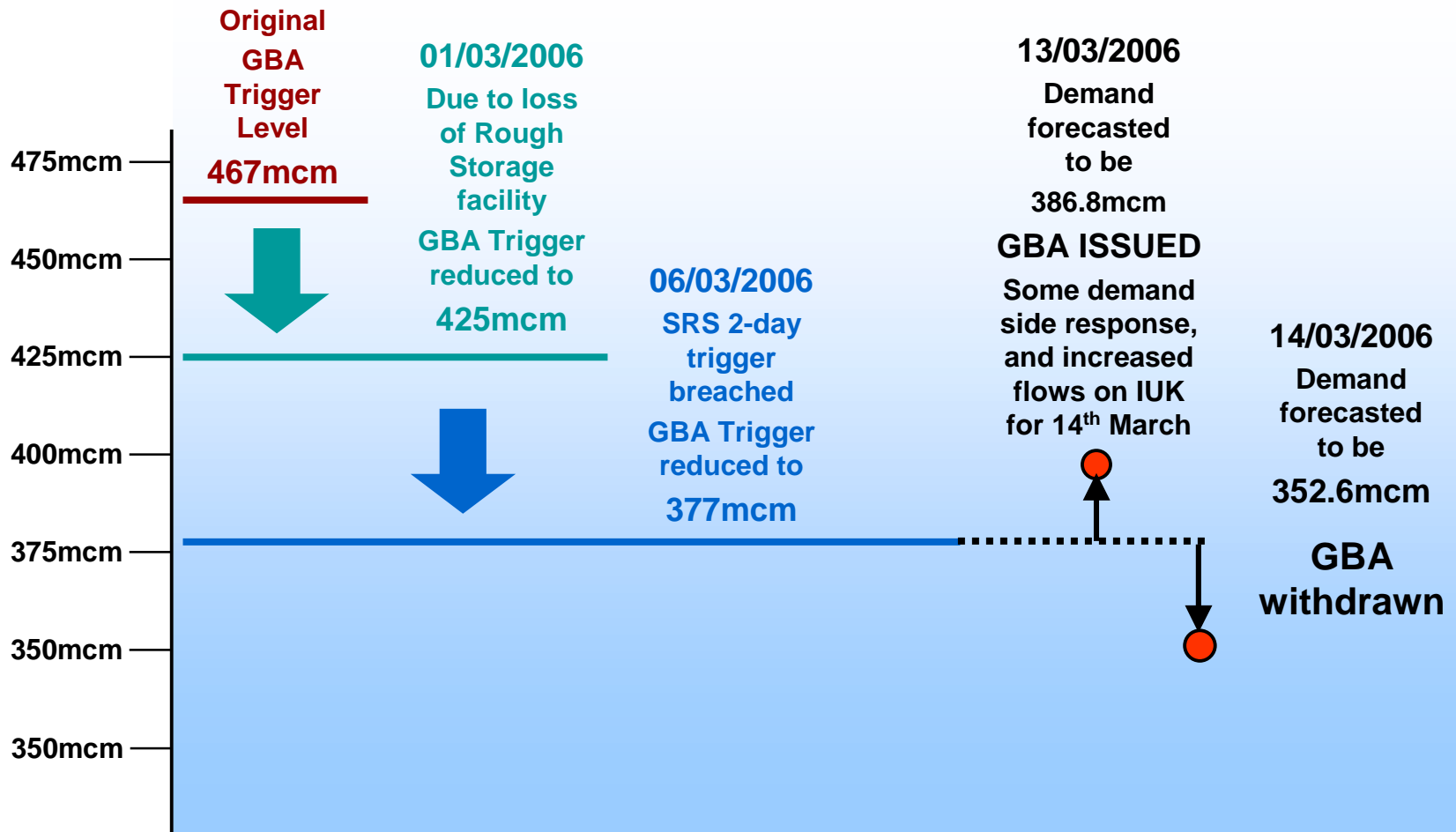
16<sup>th</sup> February – Rough Incident

# Gas Balancing Alert

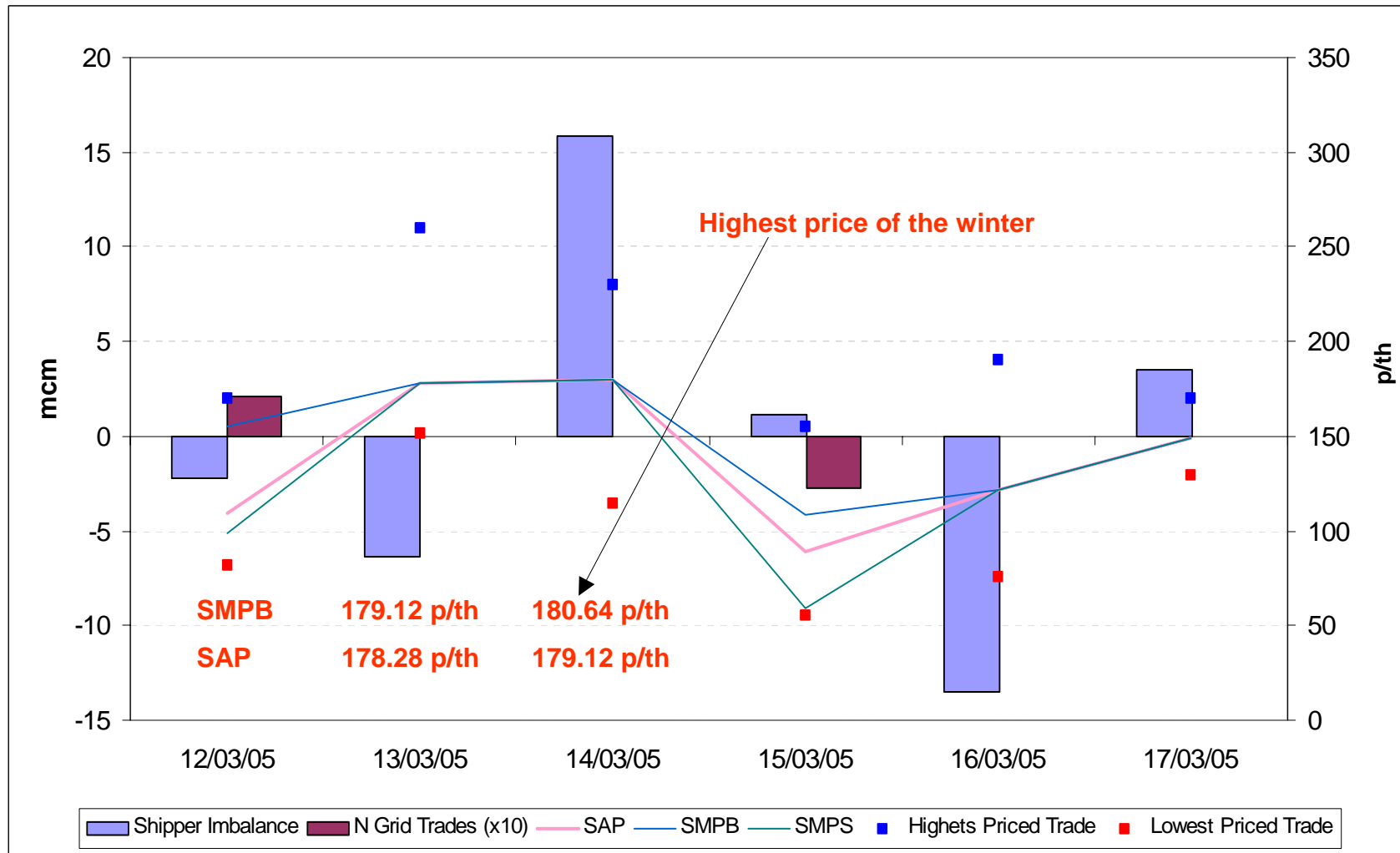
---

# Gas Balancing Alert (GBA)

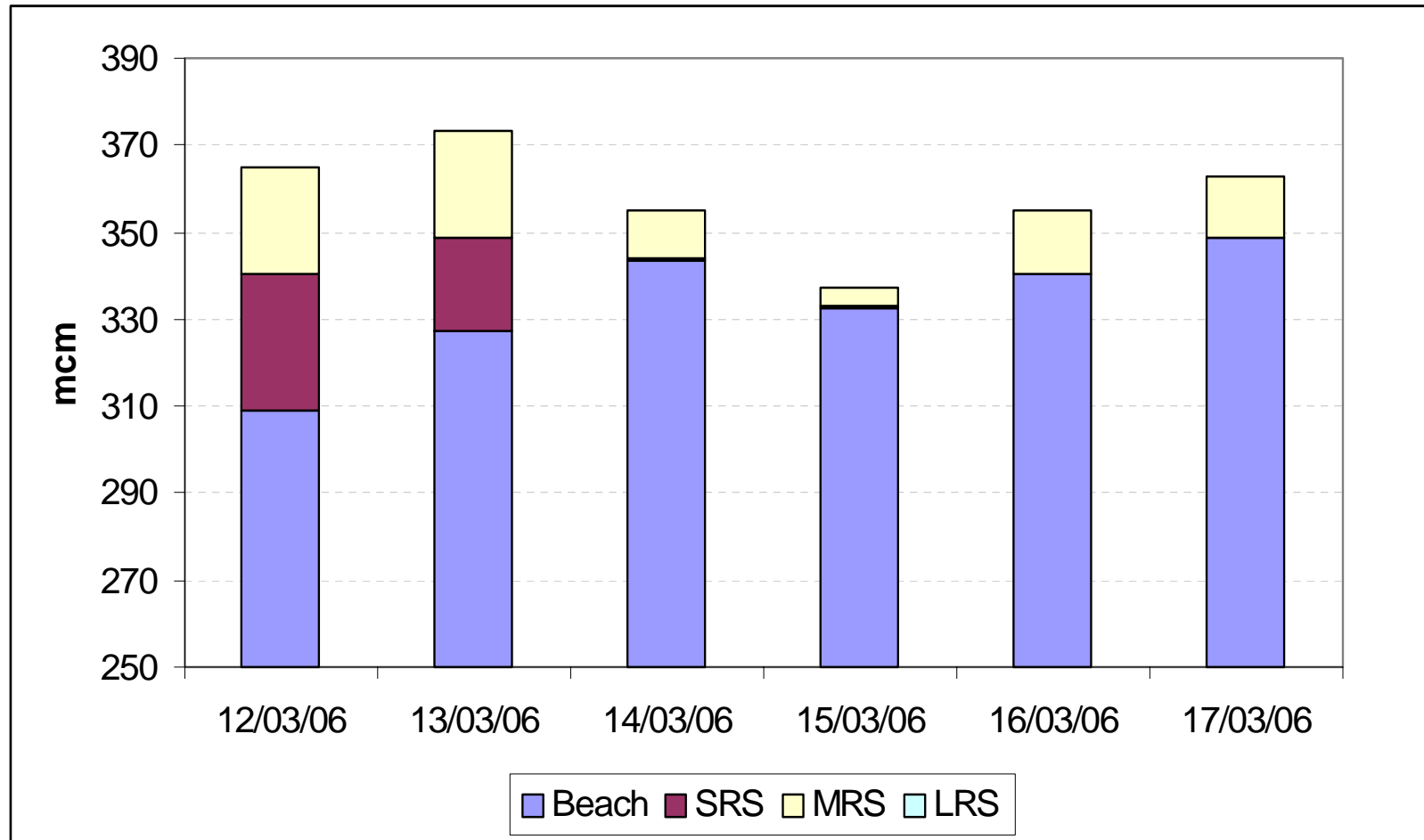
Monday 13<sup>th</sup> March, 2006



# Shipper imbalance Position Gas Day 12/03/06 to 17/03/06



## Supplies – Breakdown 12/03/06 to 17/03/06



- No LRS due to Rough being offline following explosion in february

# 2006/07 Winter Consultation Process

---

- ◆ This year, NG in conjunction with Ofgem, have decided to conduct an enhanced consultation process.
- ◆ The initial Winter consultation report is due to be issued shortly.
- ◆ Ofgem Seminars planned for 24<sup>th</sup> May and 2<sup>nd</sup> June.
- ◆ Further consultation report to be issued in late June/early July.
- ◆ Ofgem Seminar planned for 20<sup>th</sup> July
- ◆ Final Winter Consultation Report due to be issued by end of September.