

Fast Reserve

Market Information for Tenders for March 2012

National Grid publishes this information, in order to inform potential participants for the Fast Reserve tender round for March 2012.

Fast Reserve Availability

Our indicative requirement for Fast Reserve in March 2012 is shown on a Settlement Period basis in Figure 1. This requirement covers weekdays, Saturdays, Sundays and Bank Holidays.

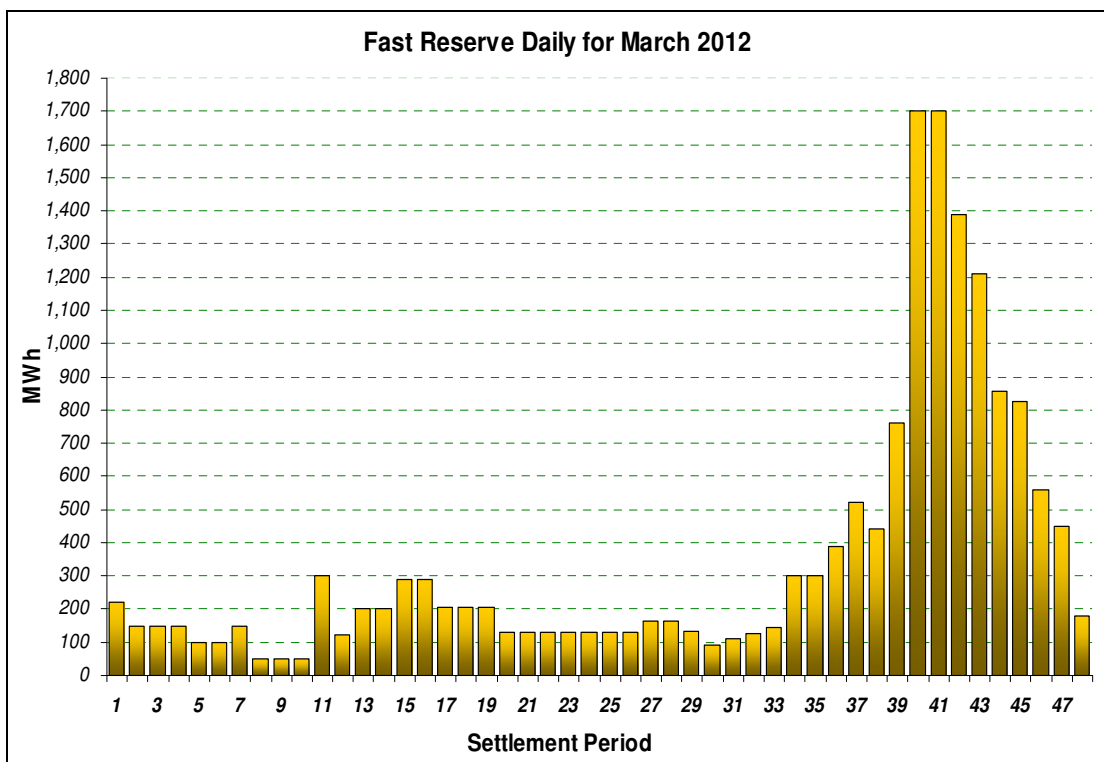


Figure 1

Figure 1 gives an indication of the times of day when Fast Reserve is most useful to National Grid. The actual amount of Fast Reserve "holding" varies from day to day, according to system conditions.

Fast Reserve Utilisation

The following BM information is based on the aggregate of Offers plus Bids accepted to provide Fast Reserve or an equivalent service. Note that the data for January 2012 contains both out-turn and forecast.

Figure 2 shows the daily utilisation of Fast Reserve in the BM and elsewhere during December 2011 and January 2012.

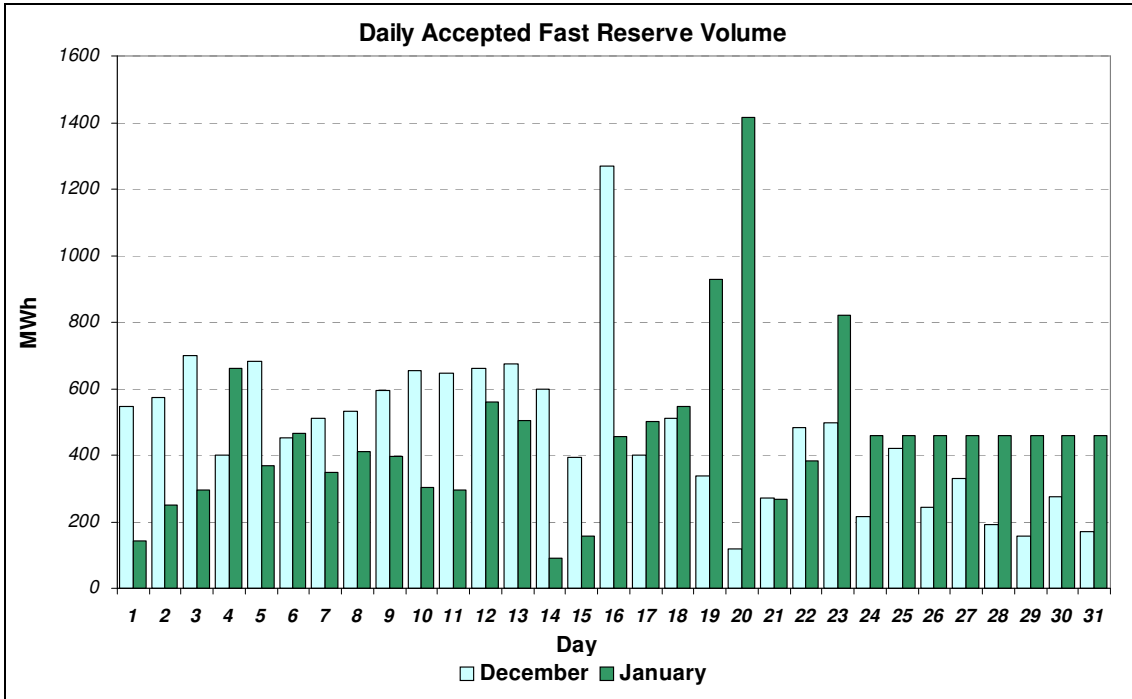


Figure 2

Figure 3 represents this data as total utilisation by Settlement Period across each month. This shows the daily profile of Fast Reserve utilisation.

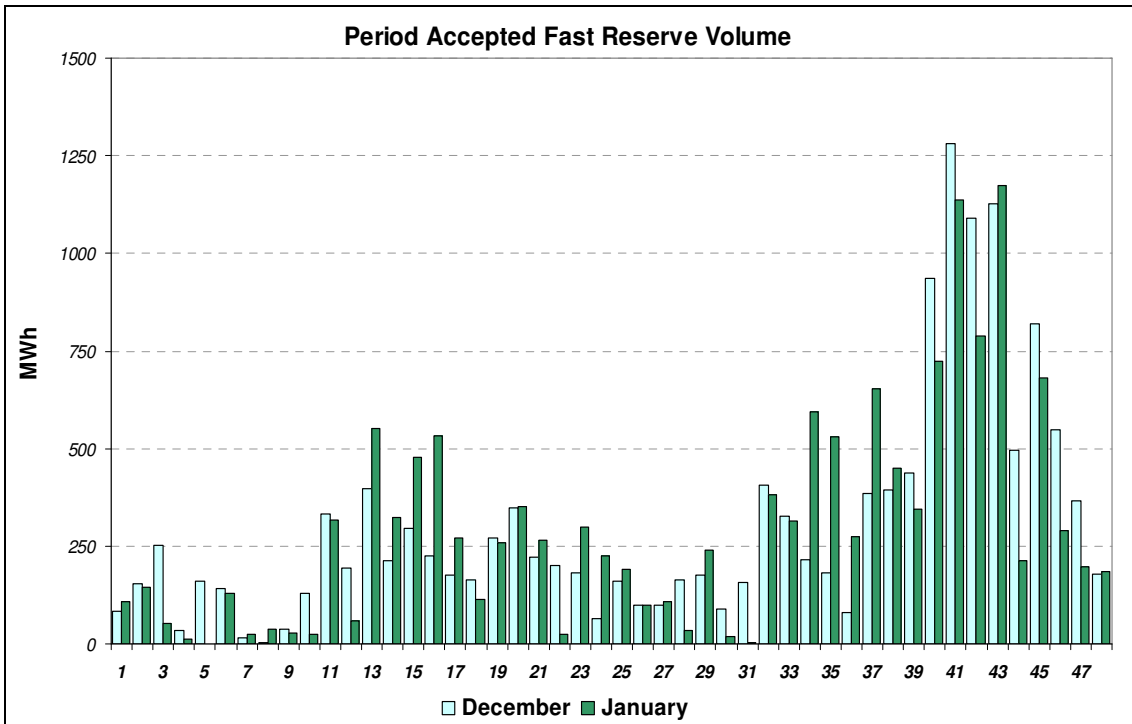


Figure 3

Figure 4 represents the same historical data, as an average utilisation price per Settlement Period for each month.

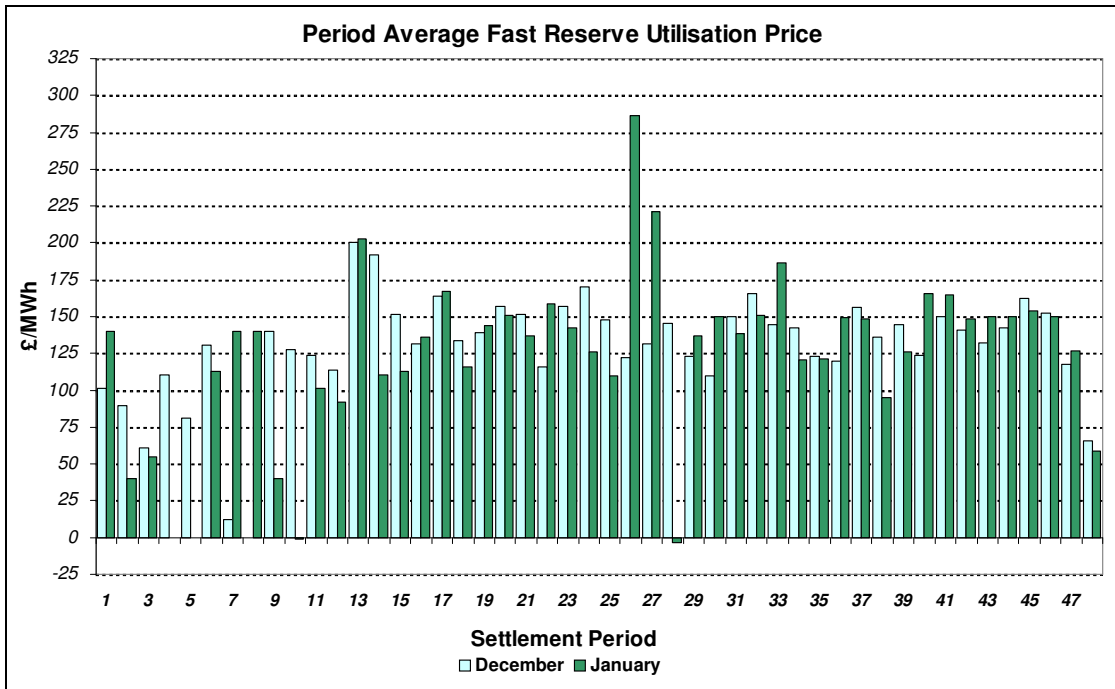


Figure 4

Finally, the same data is used in Figure 5, below, to show the profile of total Fast Reserve utilisation expenditure per Settlement Period for each month.

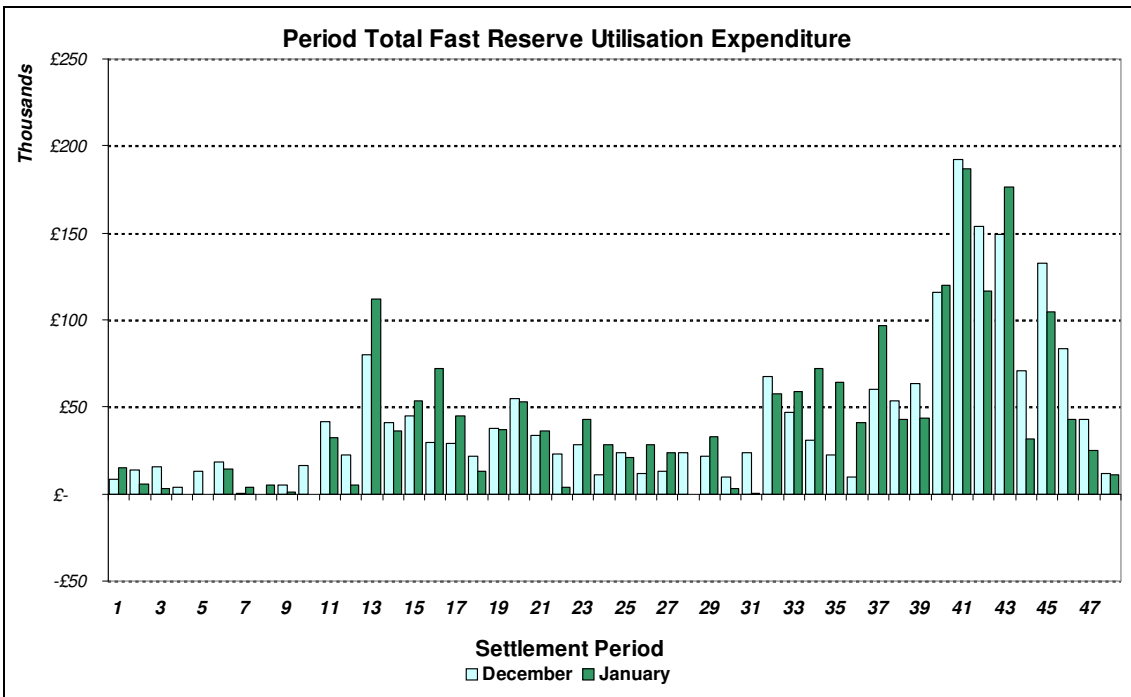


Figure 5

The total volumes of Fast Reserve utilisation of **14.52GWh** for December and **14.25GWh** for January, broken down into price bands are as follows:

December	Price band (£/MWh range)	Volume (MWh)	Average Price (£/MWh)	Cost (£m)
OFFERS	2000 to 99999	0	n/a	n/a
	1000 to 2000	0	n/a	n/a
	300 to 1000	10	335	0.00
	0 to 300	13,126	152	2.00
Total		13.14GWh		£2.m
BIDS	0 to 300	-1,199	17	-0.02
	-300 to 0	-136	-192	0.03
	-1000 to -300	-45	-495	0.02
	-2000 to -1000	0	n/a	n/a
	-99999 to -2000	0	n/a	n/a
Total		-1.38GWh		£0.03m
Total		14.52GWh		£2.03m

January	Price band (£/MWh range)	Volume (MWh)	Average Price (£/MWh)	Cost (£m)
OFFERS	2000 to 99999	0	n/a	n/a
	1000 to 2000	0	n/a	n/a
	300 to 1000	32	377	0.01
	0 to 300	12,775	152	1.94
Total		12.81GWh		£1.95m
BIDS	0 to 300	-1,240	20	-0.03
	-300 to 0	-61	-226	0.01
	-1000 to -300	-139	-560	0.08
	-2000 to -1000	0	n/a	n/a
	-99999 to -2000	0	n/a	n/a
Total		-1.44GWh		£0.07m
Total		14.25GWh		£2.02m

For the month of March 2012, tenders from eligible Service Providers for firm Fast Reserve should be submitted to National Grid by **Wednesday 1st February 2012** (business day 1) for multi-month tenders, or **Friday 3rd February 2012** (business day 3) for single month tenders. National Grid will notify Service Providers of the outcome of the tender assessment by **Tuesday 14th February 2012** (business day 10).

Tenders should be sent by post for the attention of:

Bea Ennim
Network Operations
National Grid Electricity Transmission plc
National Grid House
Warwick Technology Park
Gallows Hill
Warwick
CV34 6DA