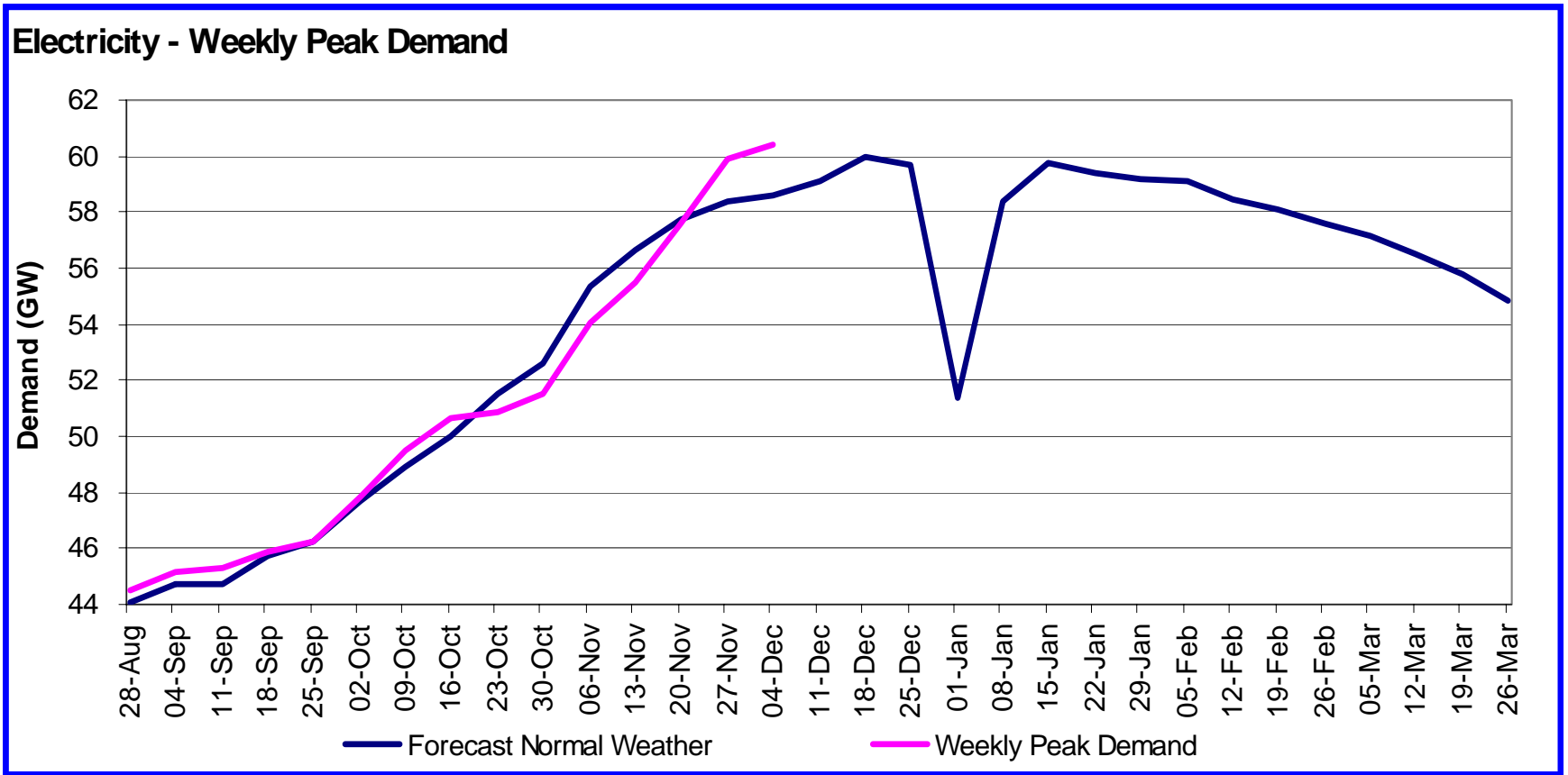


Winter Summary

Andrew Ryan

Weekly Peak Demand



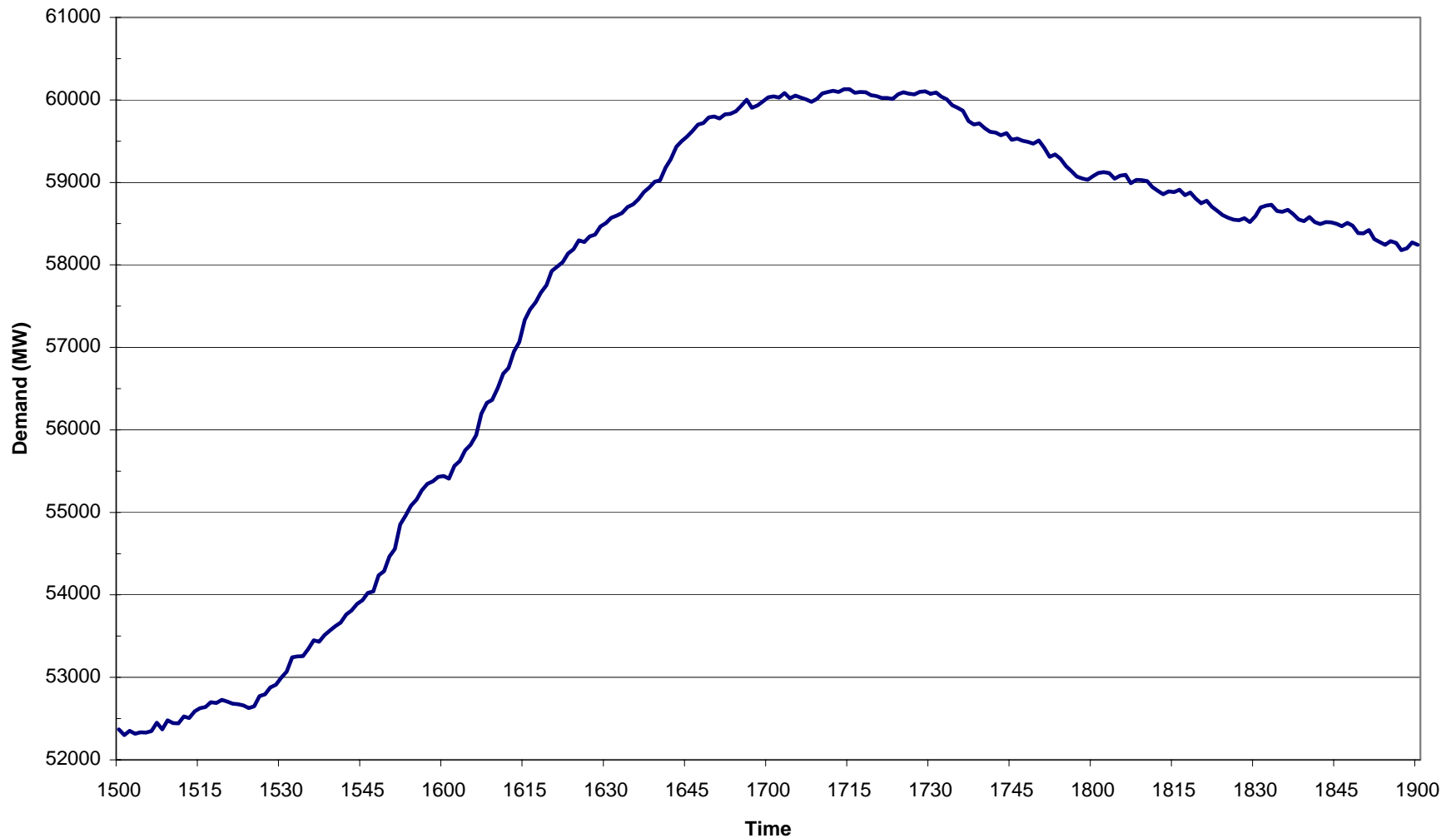
Historic peak GB demands INDO definition

2001/2 **57.1 GW*** 17:30 11/12/01
2002/3 **60.1 GW*** 17:30 10/12/02
2003/4 **58.9 GW*** 17:30 08/12/03
2004/5 **58.8 GW*** 17:30 13/12/04
2005/6 **59.5 GW** 17:30 29/11/05 Peak of year to date

These figures exclude station load and Moyle export

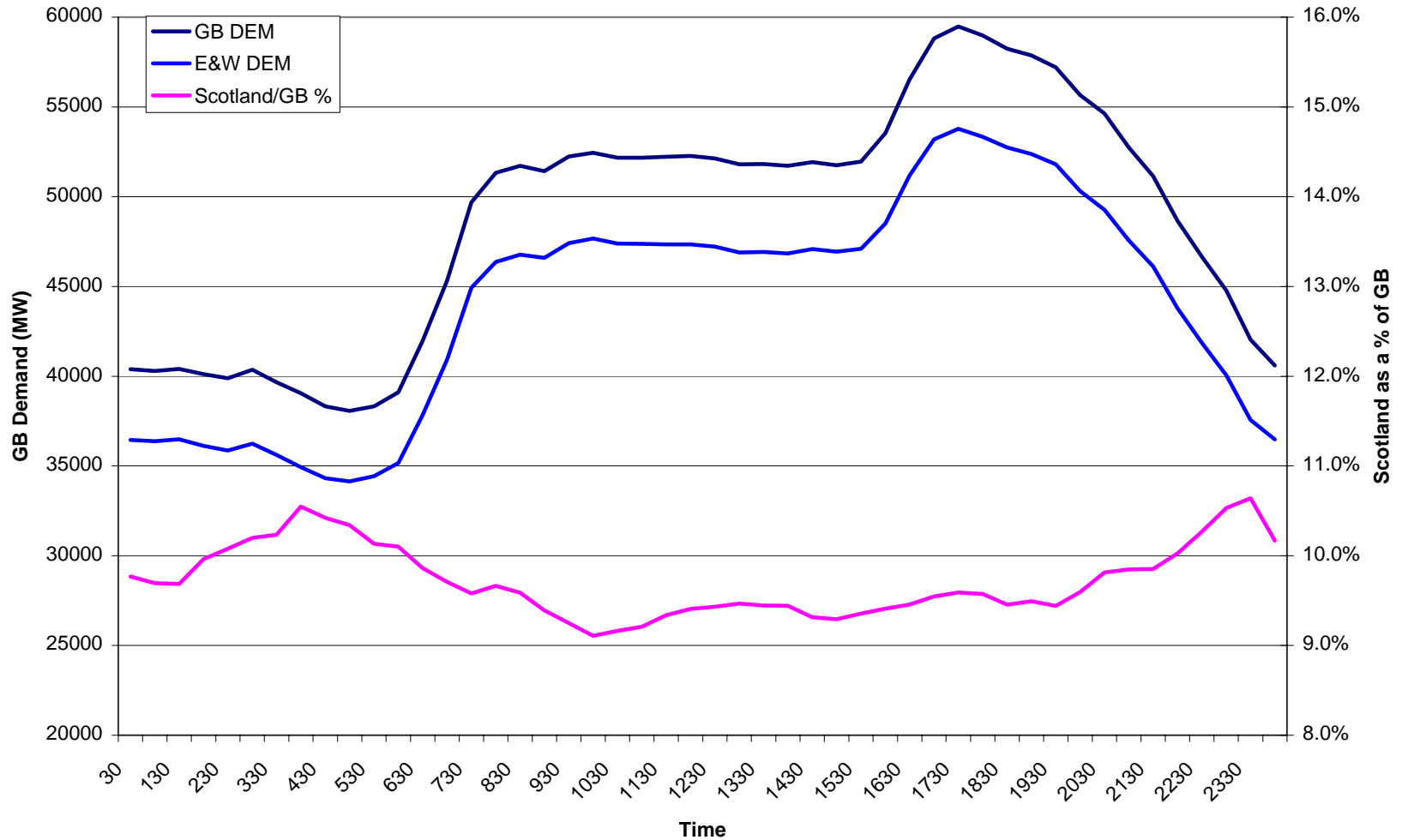
ACS demand forecast remains 61.9 GW (including station load and Moyle)

GB demand profile for 29 November 2005 (Including Station Load, but excludes Moyle)

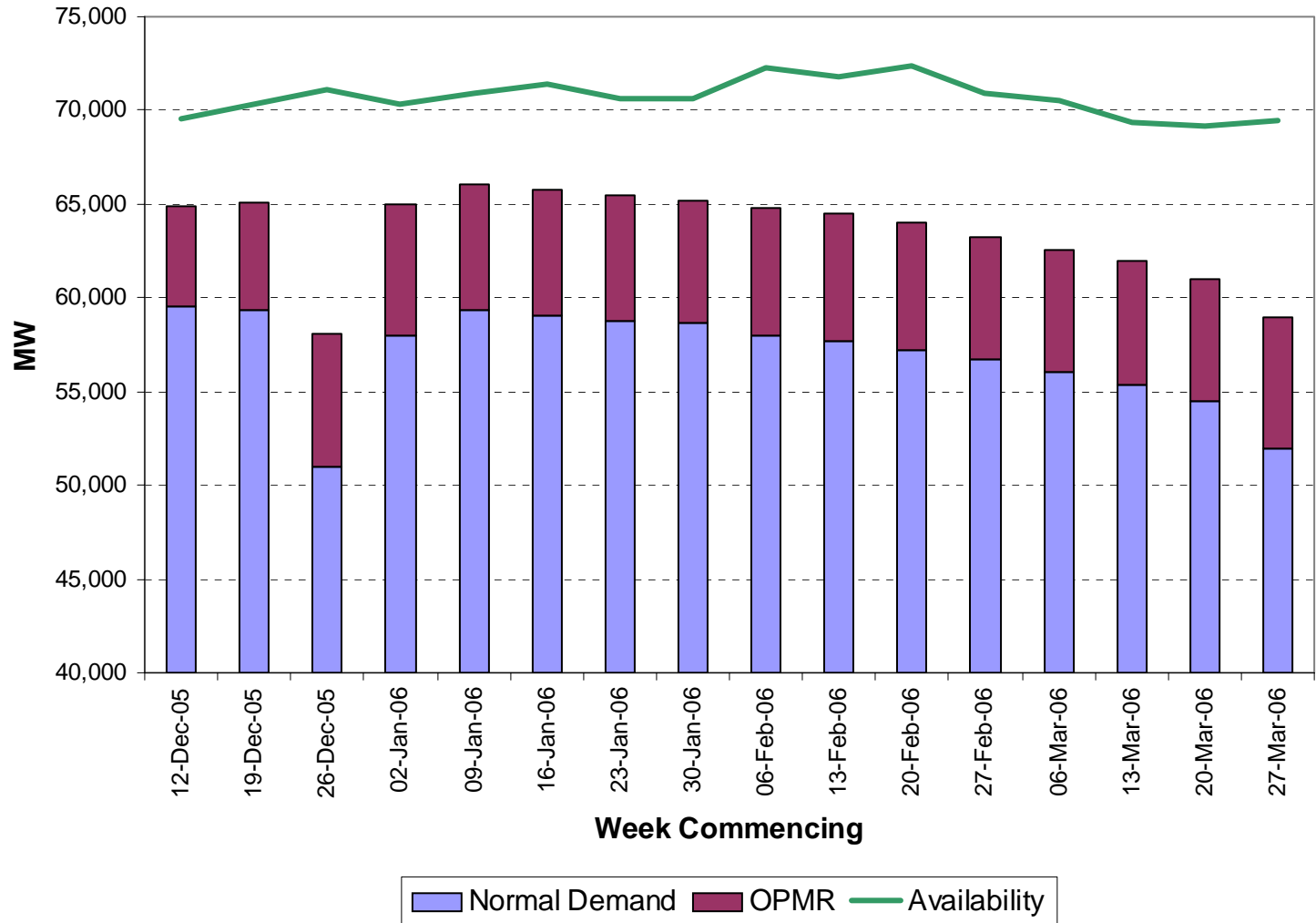


GB Generation compared to E&W

29 November 2005



Latest Generator Availability (As of 1 December)



Generator Availability

- Currently 2.9 GW conventional plant and 2.6 GW nuclear plant on planned or fault outage
- Current forecasts indicate that this should fall to 0.4 GW conventional and 0.8 GW nuclear still on outage by Christmas
- All 2.2 GW of short term mothballed plant has already returned for this winter
- There is no further long term mothballed plant expected to return this winter

Demand

- “Real-time” Outturn demand data based upon Operational Metering
- Currently we do not retrospectively revise published figures
- Exploring ways of making revised data available

- Demand forecasts reflect National Grid’s view of demand management

- What generators make up Demand....

National Grid 'Demand' is really the - Generation Requirement

The National Grid Demand or Initial Demand Out-turn (INDO):

- Includes the Sum of generation (Mostly BMUs) from Operational metering at the generator terminals.
- Includes Interconnector Imports.
- Includes Pump Storage Generation.
- Excludes Interconnector Exports (To France and Northern Ireland).
- Excludes Pump Storage Pumping.
- Excludes station own use (500MW in summer and 600MW in winter)
- Includes transmission losses by definition

Total Gross System Demand is the total Generation Requirement to exactly balance the system at any one time

TGSD

- Includes the Sum of generation (Mostly BMUs) from Operational metering at the generator terminals.
- Includes Interconnector Imports.
- Includes Pump Storage Generation.
- Includes Interconnector Exports (To France and Northern Ireland).
- Includes Pump Storage Pumping.
- Includes station own use (500MW in summer and 600MW in winter)

The National Grid view of generation

- National Grid can only 'see' generators with live Operational metering sending data to the IEMS. Only these can be included in the demand calculation.
- Embedded generators without live metering are not included in the demand calculation and are seen as a reduction in 'demand' when generating.
- All BMUs are included in the demand calculation.

The National Grid view of generation (2)

- There are 254 Generators summated in the National Grid demand calculation of which 189 are in England and Wales.
- There are 229 Registered BMUs.
- Alcan (TEC 393MW) and Winnington (TEC 80MW) are the largest of the non BMU generators.
- There are 21 Embedded Exempt Large/Medium Power Stations.
- The full list will be published on the National Grid Internet site
- Further details Christopher.Rogers@uk.ngrid.com

The National Grid view of generation (3)

- There are Interconnectors to France and Northern Ireland. The metered in-flow as measured in the UK is used in the out turn demand calculations. For the forecasts, the sum of IFDs and IFGs is used.
- There are 4 Pumped Storage stations Dinorwig (1700MW), Ffestiniog (350MW), Foyers (300MW) and Cruachan (440MW).

END

Questions?