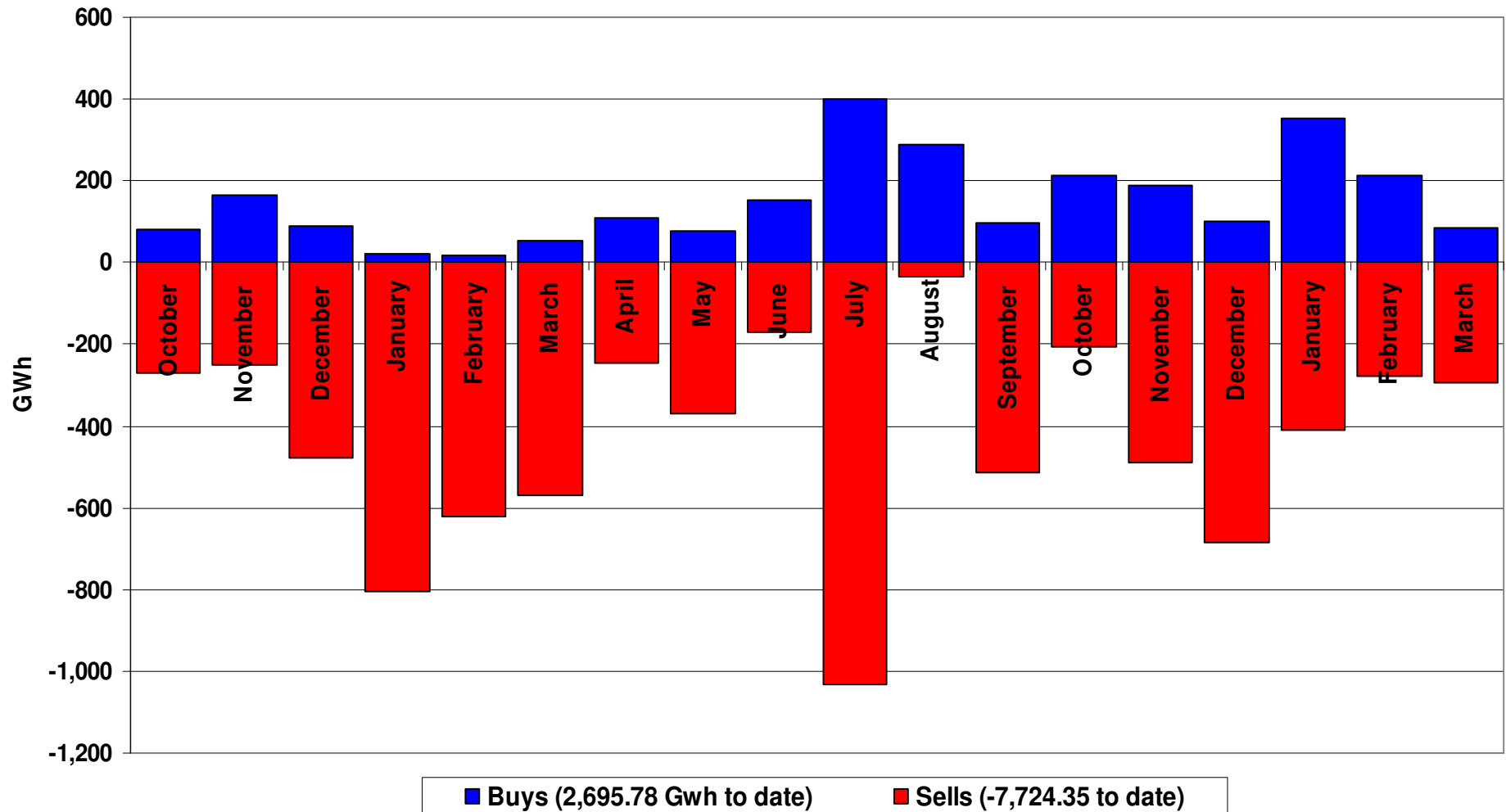


Performance of the Energy Regime

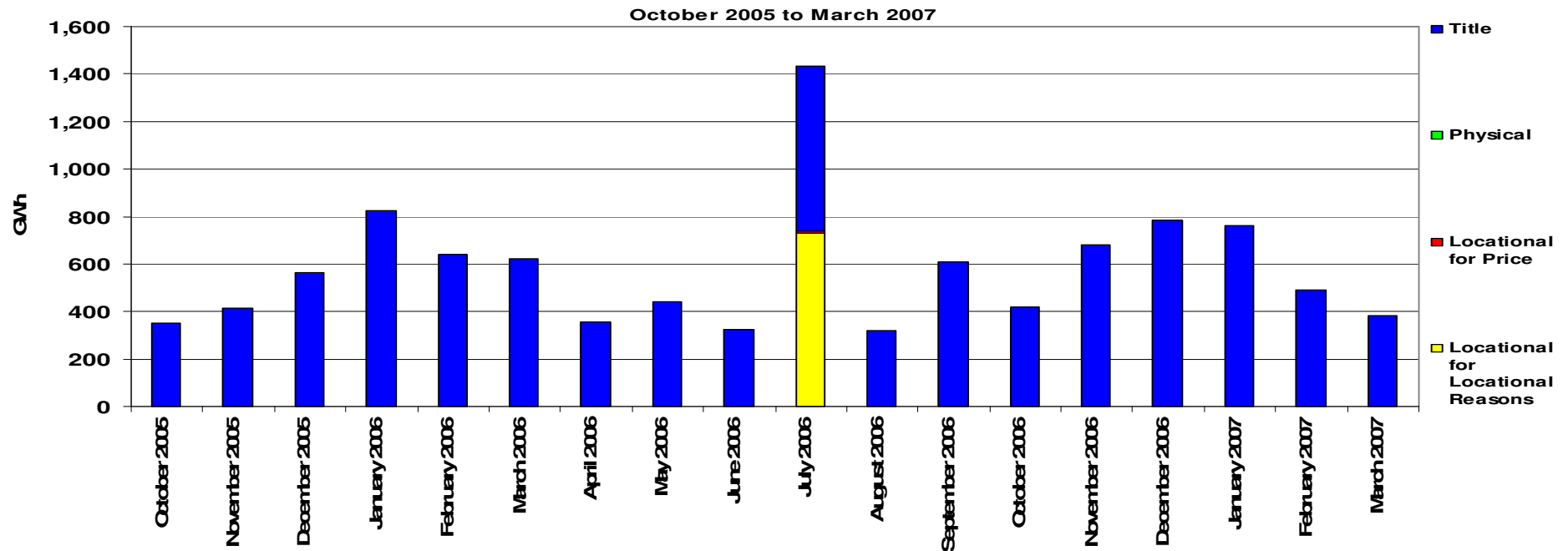
February 2007

March 2007

Transporter Energy Traded Per Month



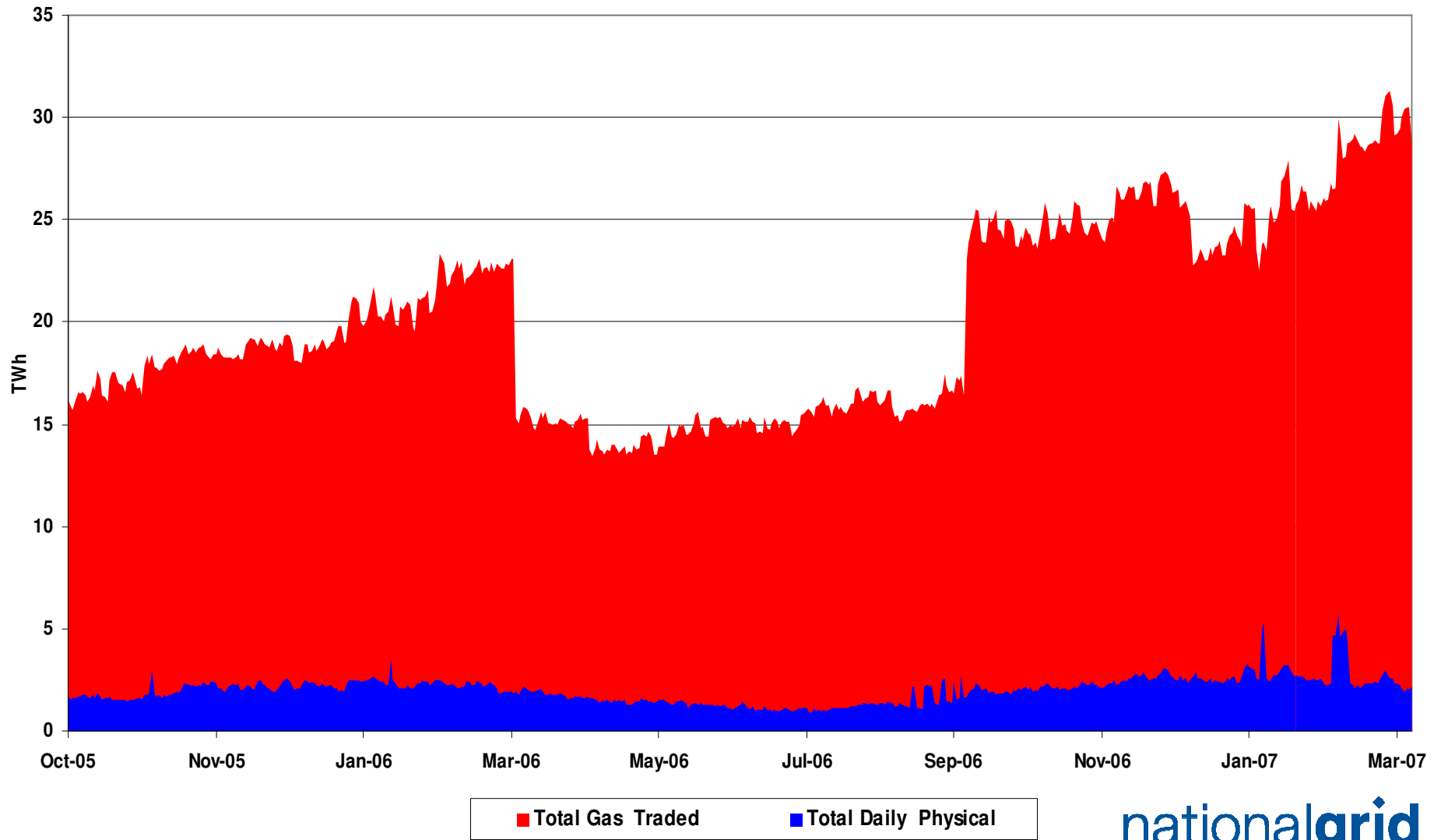
Monthly Energy Traded by Transporter on the OCM



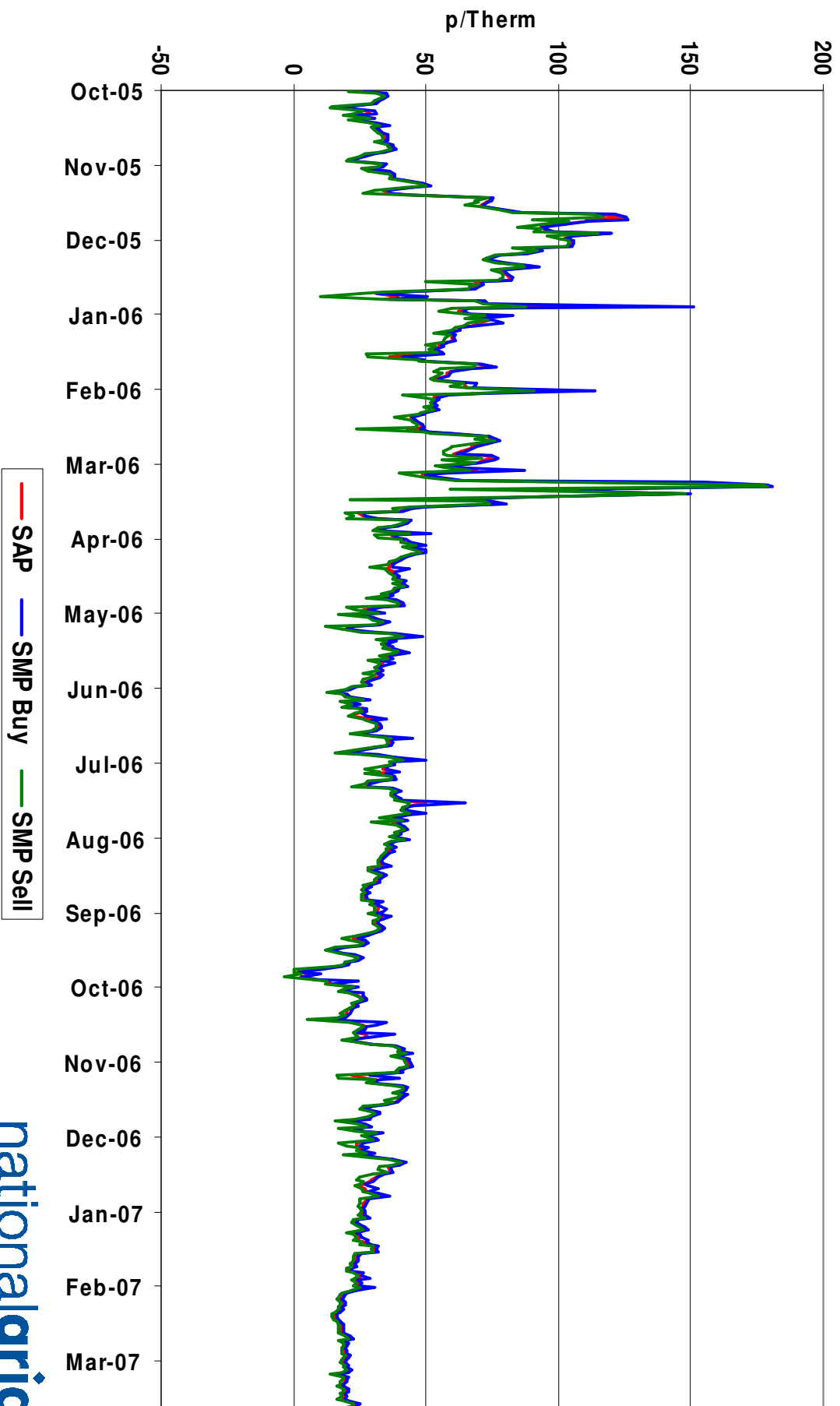
April all Markets = 357.08 Gwh
 May all Markets = 443.65 Gwh
 June all Markets = 322.67 Gwh
 July all Markets = 1,434.32 Gwh
 August all Markets = 321.73 Gwh
 September all Markets = 610.64 Gwh

October all Markets = 420.15 Gwh
 November all Markets = 678.78 Gwh
 December all Markets = 783.17 Gwh
 January all Markets = 760.75 Gwh
 February all Markets = 489.66 Gwh
 March all Markets = 381.08 Gwh

NBP Gas Trades

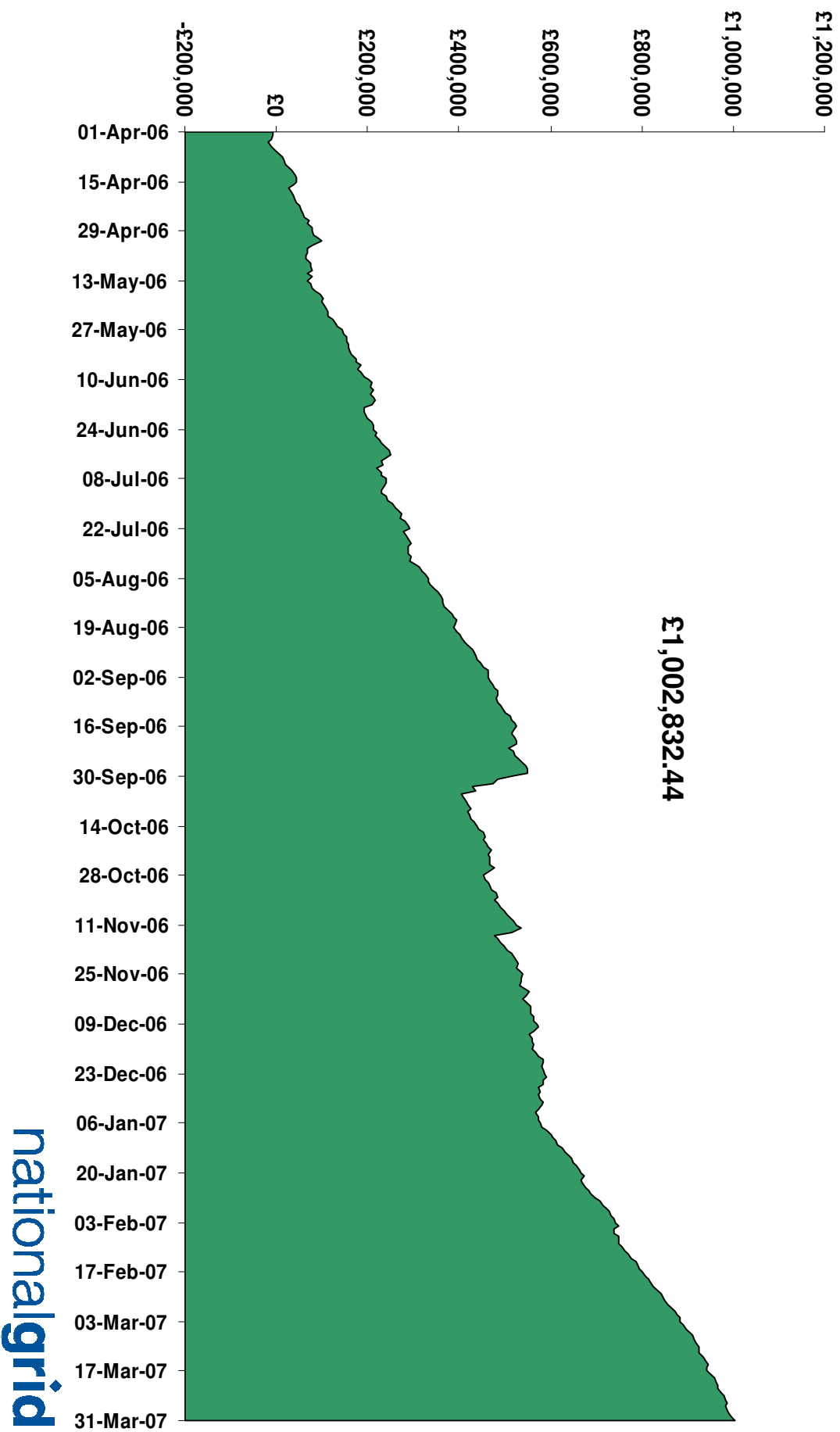


Gas Prices



Energy Balancing Incentive

1st April 2006 to 31st March 2007



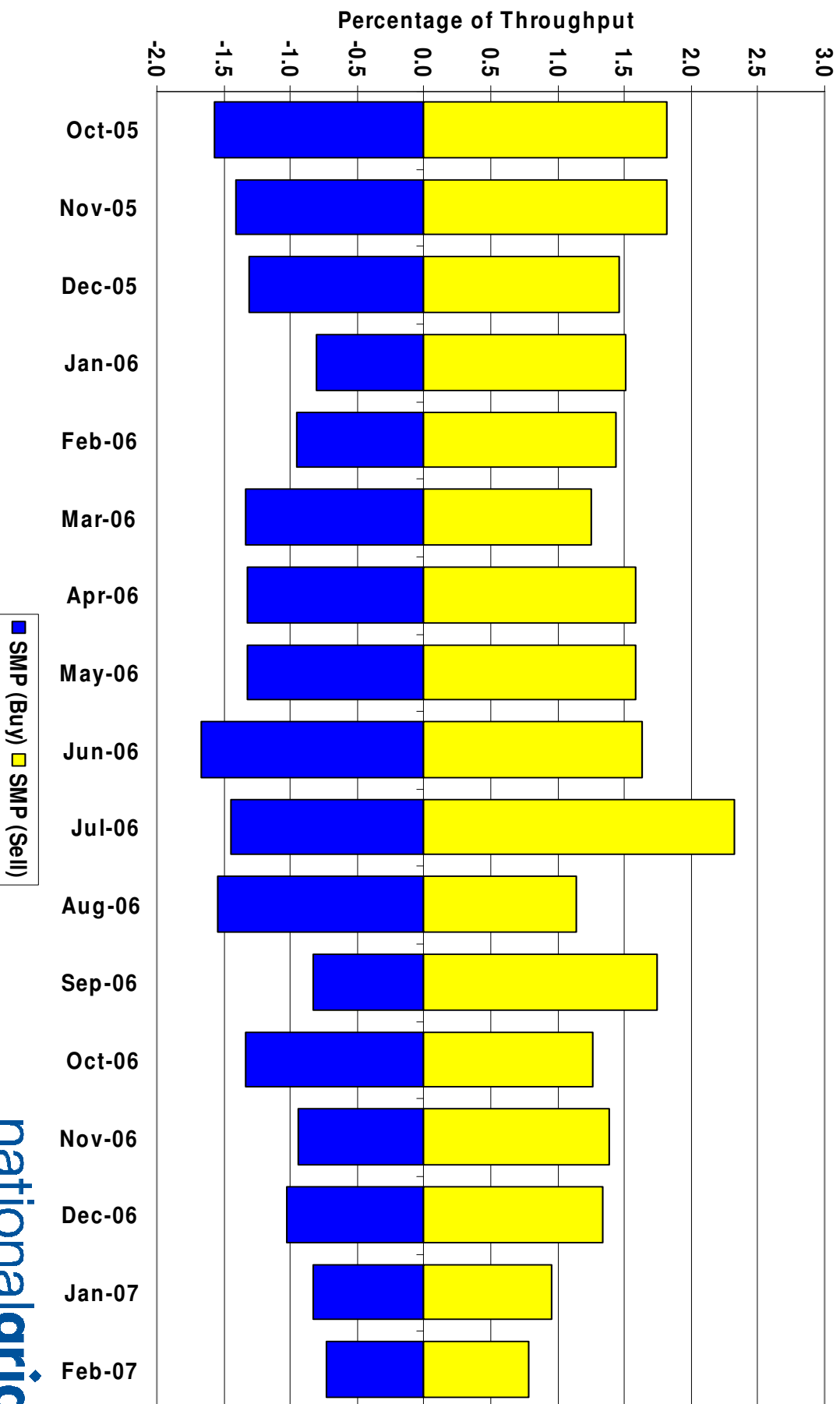
Days of Default SMP Prices

1st October 2006 to 31st March 2007

Percentage of Days of Default SMP

| SMP Buy | SMP Sell | Both |
|---------|----------|-------|
| 79.7% | 68.7% | 56.0% |

System Level Imbalance as a % of Throughput



Transporter Actions on OCM Mechanism

Revenues / Costs

1st October 2006 to 28th February 2007

| | Quantity (TWh) | Average (p/kWh) | Price (Therms) | Cost (£m) |
|---------------------|---------------------------|----------------------------|---------------------------|------------------|
| System Buy | 1.064 | 1.0596 | 31.05 | £11.27 |
| System Sell | -2.068 | 0.8119 | 23.79 | -£16.79 |
| Net Position | 1.004 Sell | | | -£5.52 |

Imbalance Gas

Revenues / Costs

1st October 2006 to 28th February 2007

| System | Quantity (TWh) | Average (p/kWh) | Price (p/therm) | Cost £m |
|------------------------|---------------------------|----------------------------|----------------------------|-----------------|
| System Buy | 15.65 | 0.7848 | 22.99 | £122.84 |
| System Sell | -14.16 | 0.8878 | 26.01 | -£125.70 |
| Net Position | 1.49 Buy | | | -£2.86 |

Scheduling Revenues

1st October 2006 to 28th February 2007

| | Cost £m |
|---------------|----------------|
| Input | -£1.05 |
| Output | -£0.35 |
| <hr/> | |
| Total | -£1.40 |

Balancing Costs

1st October 2006 to 28th February 2007

| | £m |
|-----------------------|---------------|
| OCM/Flex Gas | (5.52) |
| Imbalance Gas | (2.87) |
| Scheduling | (1.40) |
| <hr/> | |
| Balancing Cost | (9.79) |

(-0.0007p/kWh or -0.0219p/Therm of Throughput)

Neutrality : Gas Year Comparison

(for October to February)

| | Gas Year 05/06 | Gas Year 06/07 |
|---------------------------------------|----------------|----------------|
| Neutrality by Throughput (p/therm) | -0.1297 | -0.0219 |