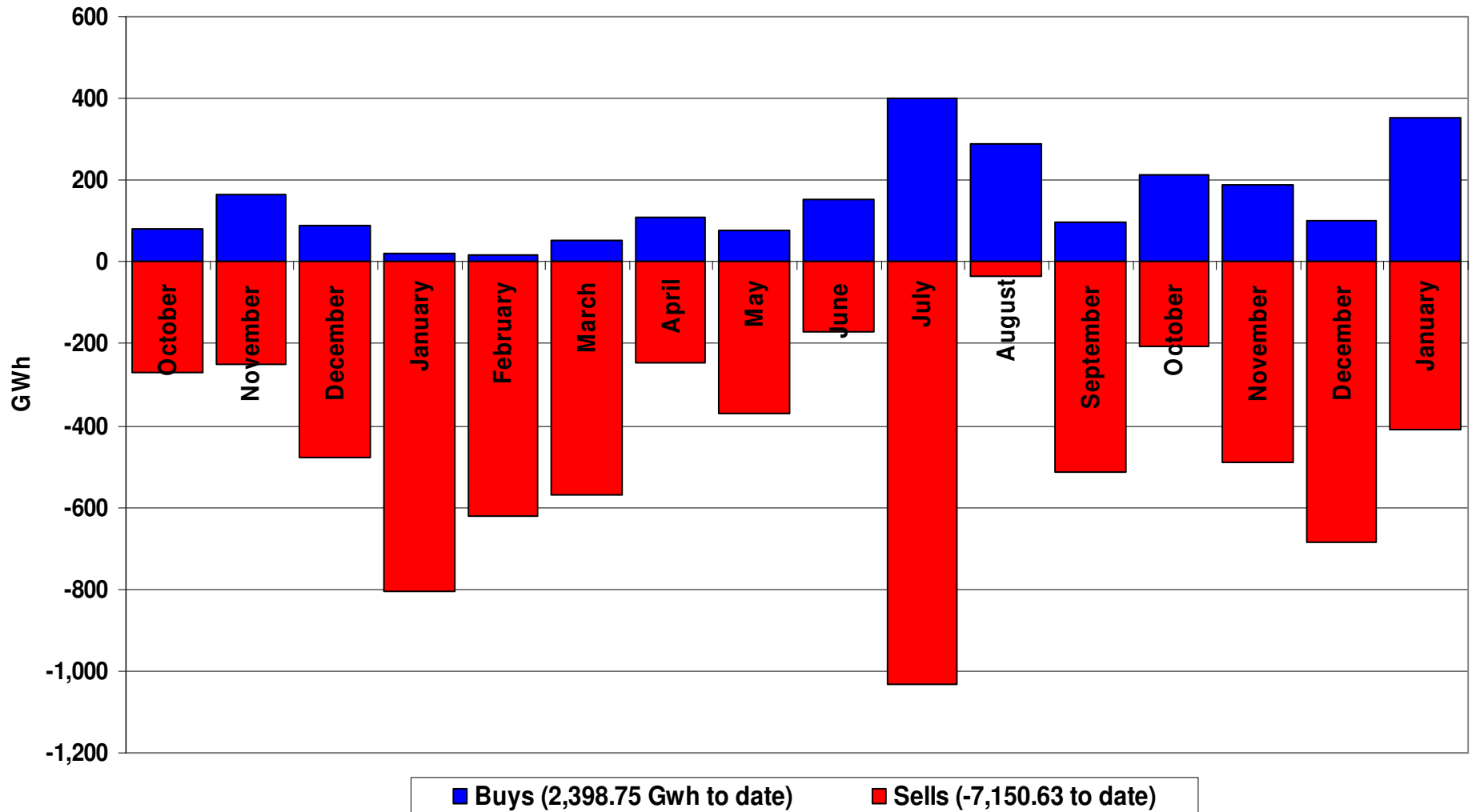


Performance of the Energy Regime

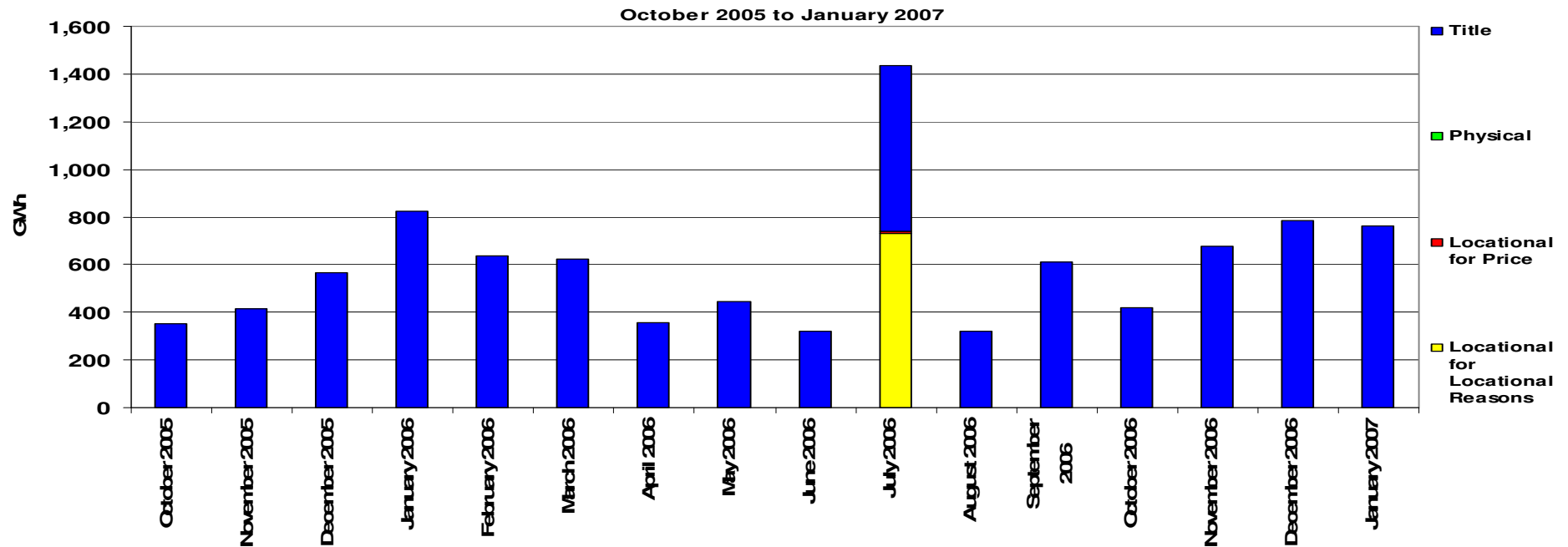
December 2006

January 2007

Transporter Energy Traded Per Month



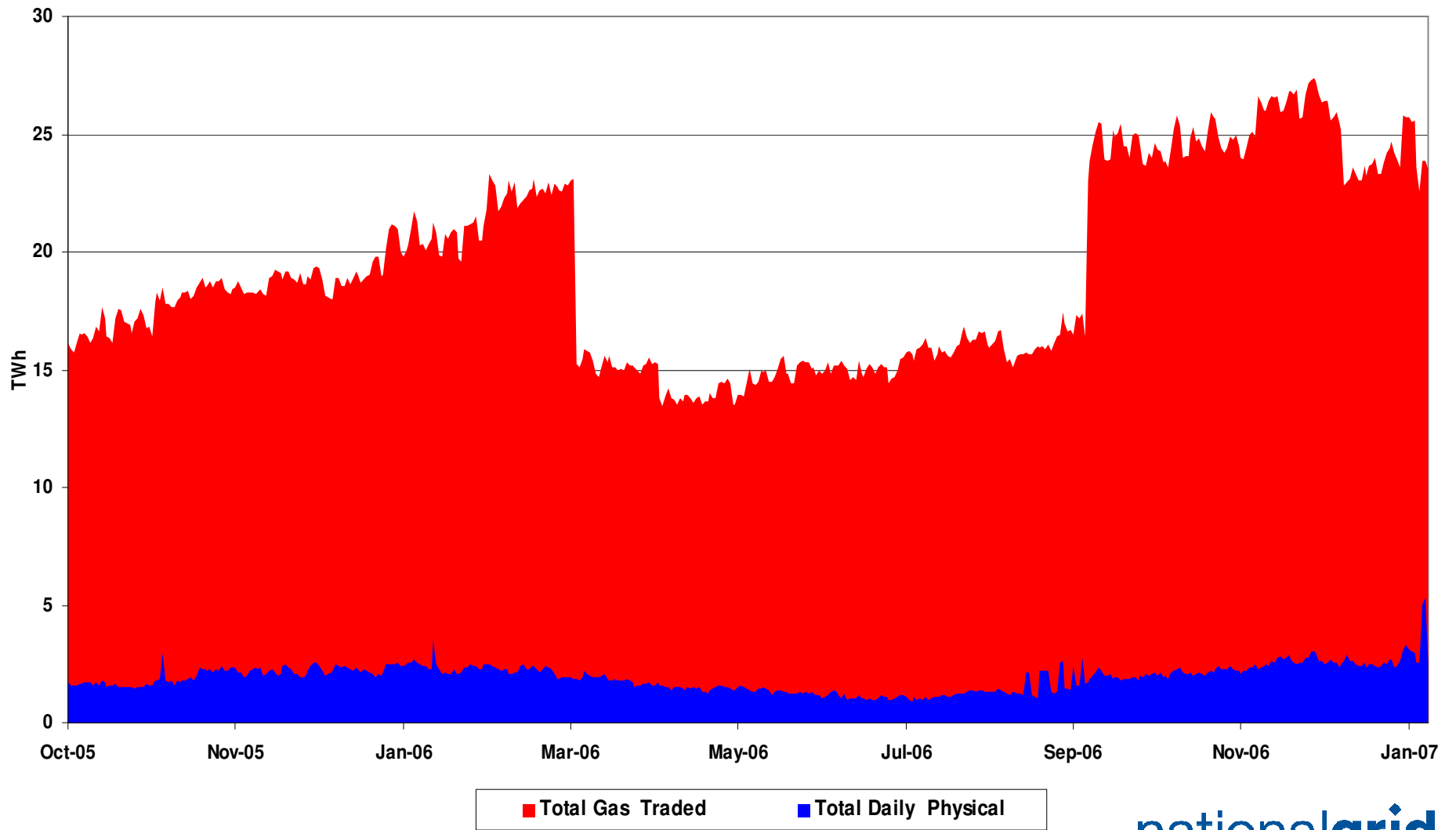
Monthly Energy Traded by Transporter on the OCM



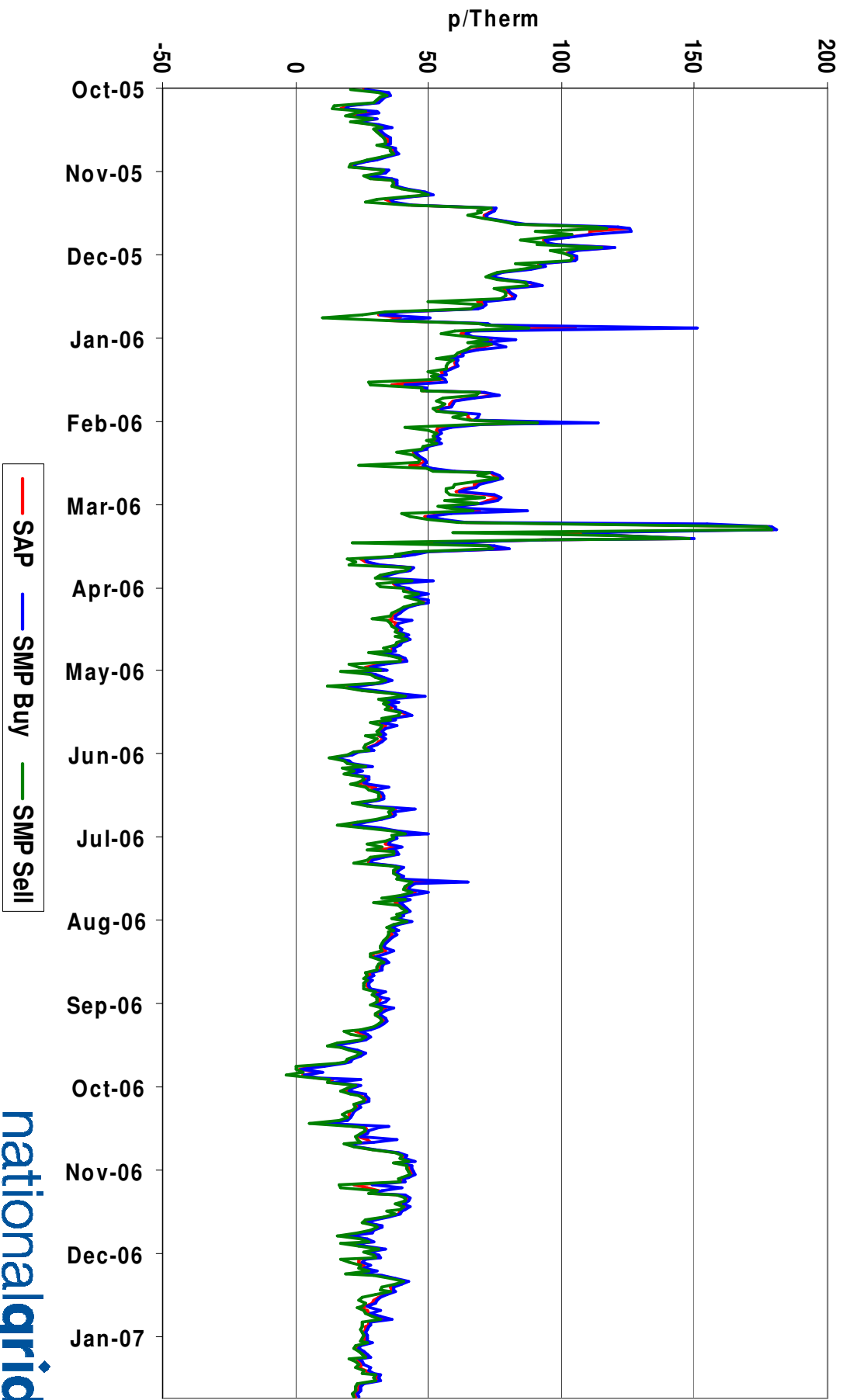
February all Markets = 638.34 Gwh
 March all Markets = 623.22 Gwh
 April all Markets = 357.08 Gwh
 May all Markets = 443.65 Gwh
 June all Markets = 322.67 Gwh
 July all Markets = 1,434.32 Gwh

August all Markets = 321.73 Gwh
 September all Markets = 610.64 Gwh
 October all Markets = 420.15 Gwh
 November all Markets = 678.78 Gwh
 December all Markets = 783.17 Gwh
 January all Markets = 760.75 Gwh

NBP Gas Trades

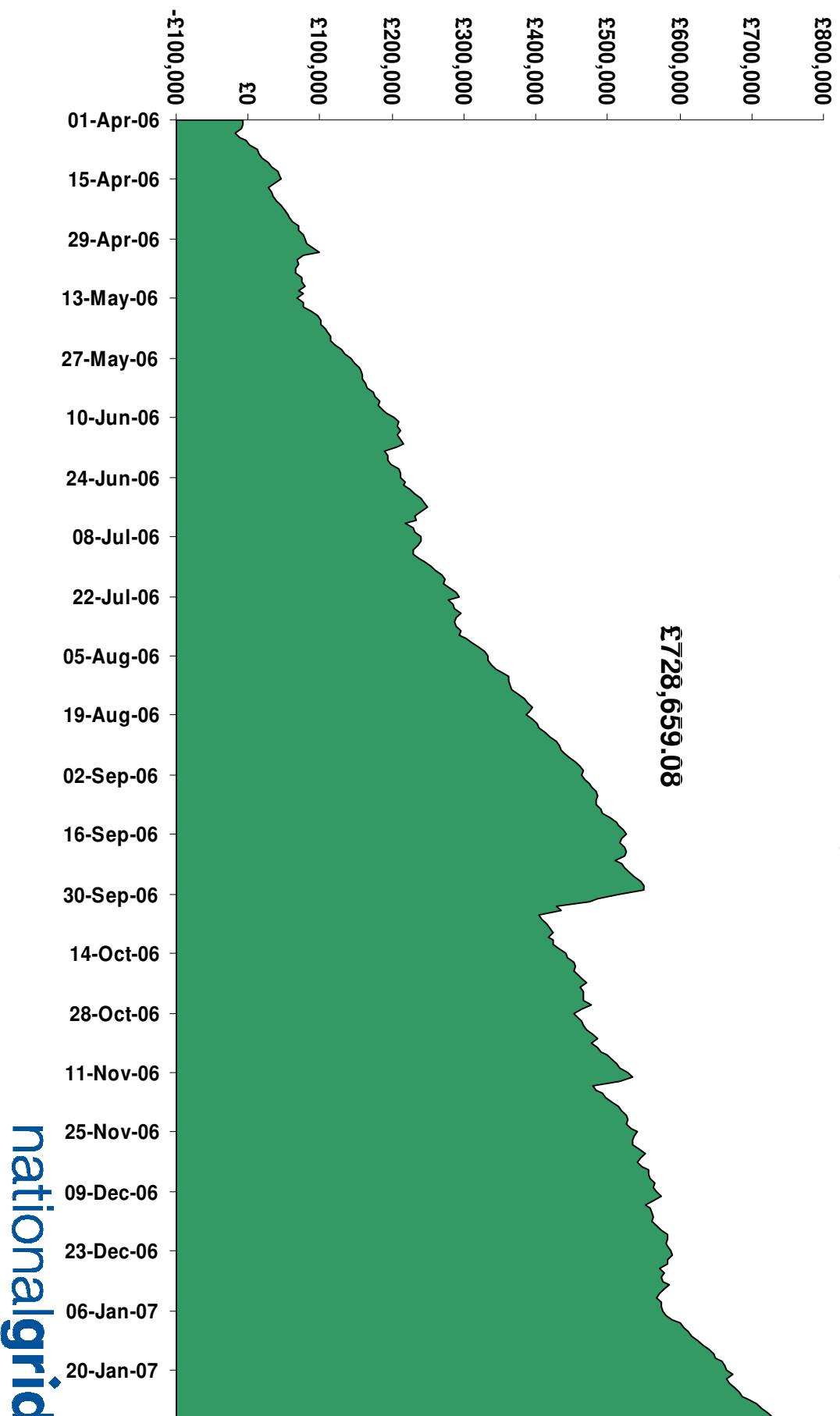


Gas Prices



Energy Balancing Incentive

1st April 2006 to 31st January 2007



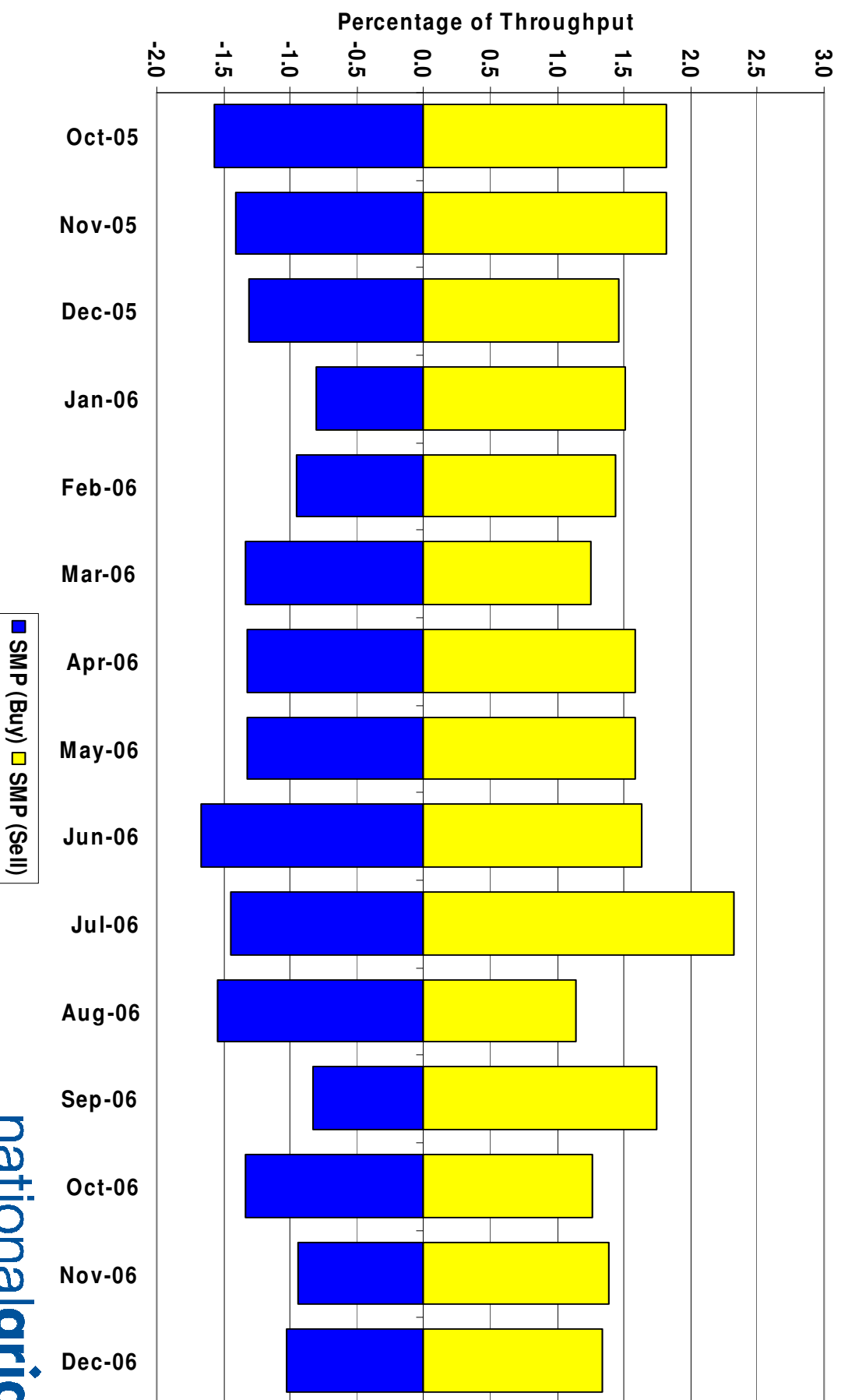
Days of Default SMP Prices

1st October 2006 to 31st January 2007

Percentage of Days of Default SMP

SMP Buy	SMP Sell	Both
80.6%	67.7%	58.1%

System Level Imbalance as a % of Throughput



Transporter Actions on OCM Mechanism

Revenues / Costs

1st October 2006 to 31st December 2006

	Quantity (TWh)	Average (p/kWh)	Price (Therms)	Cost (£m)
System Buy	0.501	1.1506	33.71	£5.77
System Sell	-1.381	0.8255	24.19	-£11.40
Net Position	0.88 Sell			-£5.63

Imbalance Gas

Revenues / Costs

1st October 2006 to 31st December 2006

System	Quantity (TWh)	Average (p/kWh)	Price (p/therm)	Cost £m
System Buy	9.55	0.7350	21.53	£70.16
System Sell	-9.12	0.8374	24.53	-£76.40
Net Position	0.43 Buy			-£6.24

Scheduling Revenues

1st October 2006 to 31st December 2006

	Cost £m
Input	-£0.74
Output	-£0.23
<hr/>	
Total	-£0.97

Balancing Costs

1st October 2006 to 31st December 2006

£m

OCM/Flex Gas (5.63)

Imbalance Gas (6.24)

Scheduling (0.97)

Balancing Cost (12.84)

(-0.0017p/kWh or -0.0509p/Therm of Throughput)

Neutrality : Gas Year Comparison

(for October to December)

	Gas Year 05/06	Gas Year 06/07
Neutrality by Throughput (p/therm)	-0.0391	-0.0509