

Winter 2006/07 - Update

Operational Forum
February 2007

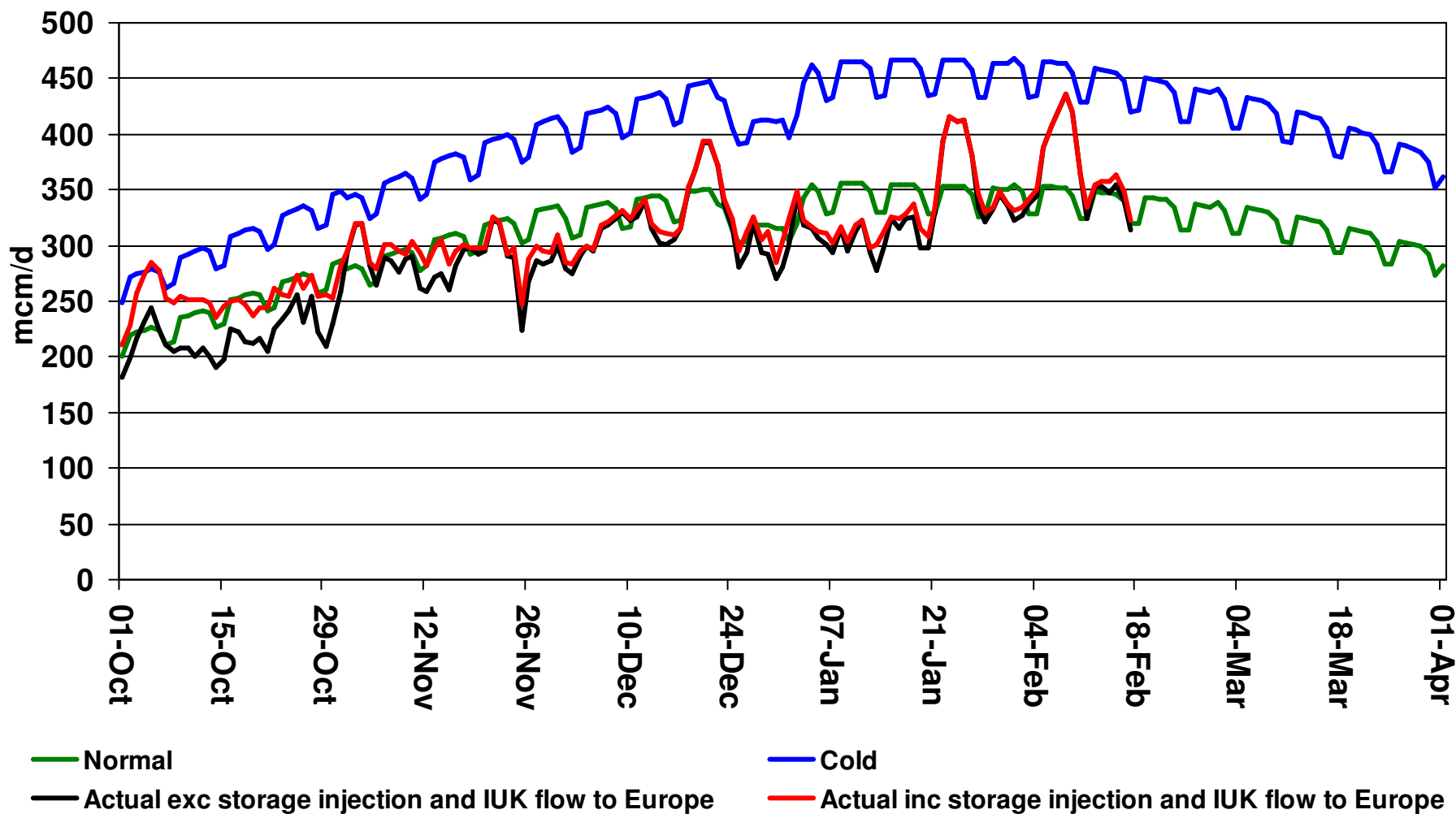
Winter 2006/07 - Update

- ◆ Highest Demand so far this winter is 434.7mcm on 8 February 2007
- ◆ Highest Demand at the same point last year was 402.2mcm recorded on 2 February 2006

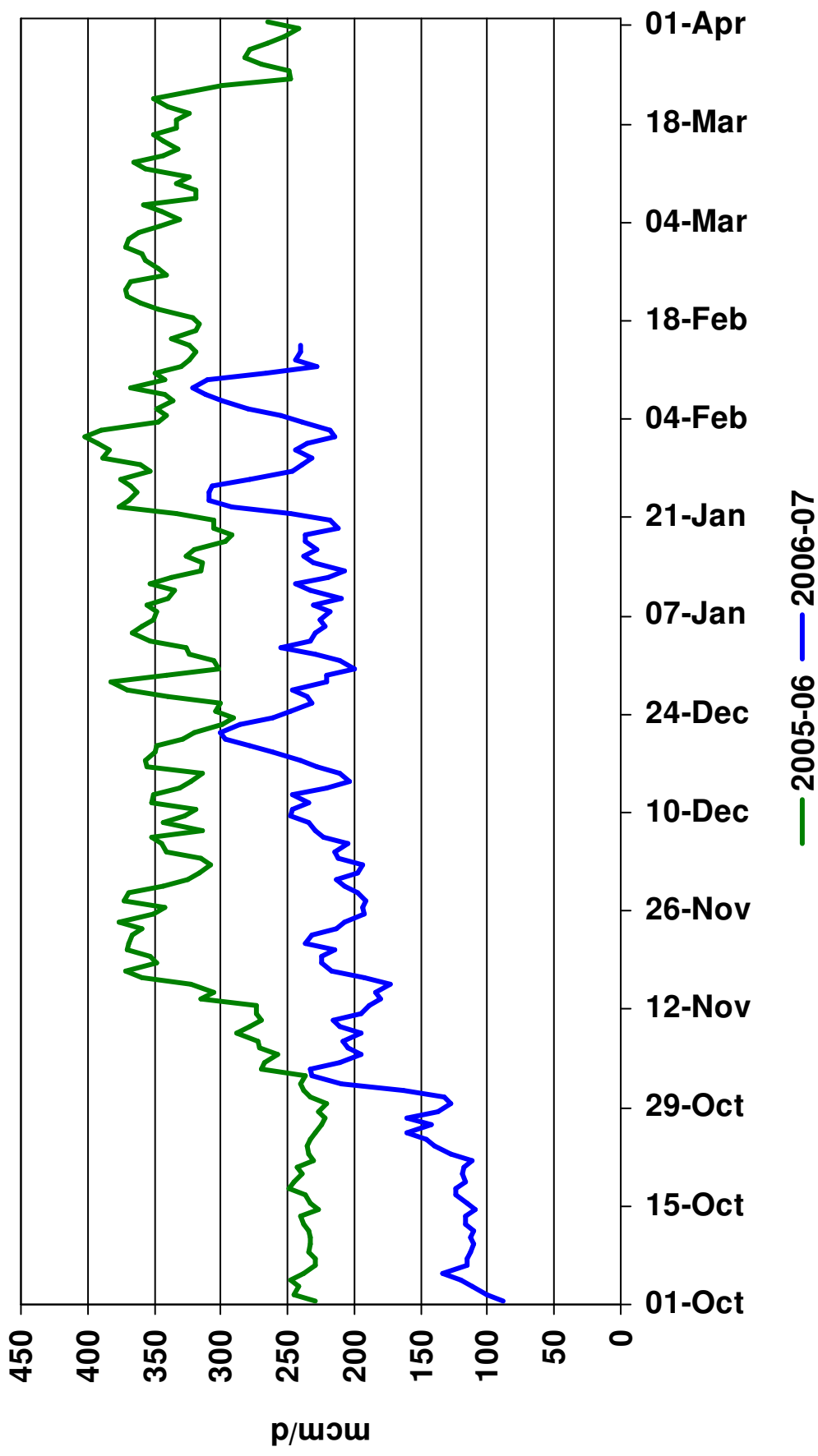
New Connections

- ◆ Teesside Excelerate
 - ◆ Commenced flowing on the 18th February 2007.
- ◆ Milford Haven
 - ◆ Phase 1, a 75 mile stretch from Milford Haven to Aberdulais, is 90% complete.
 - ◆ National Grid has received consent from the DTI for phase two of the Milford Haven connection.

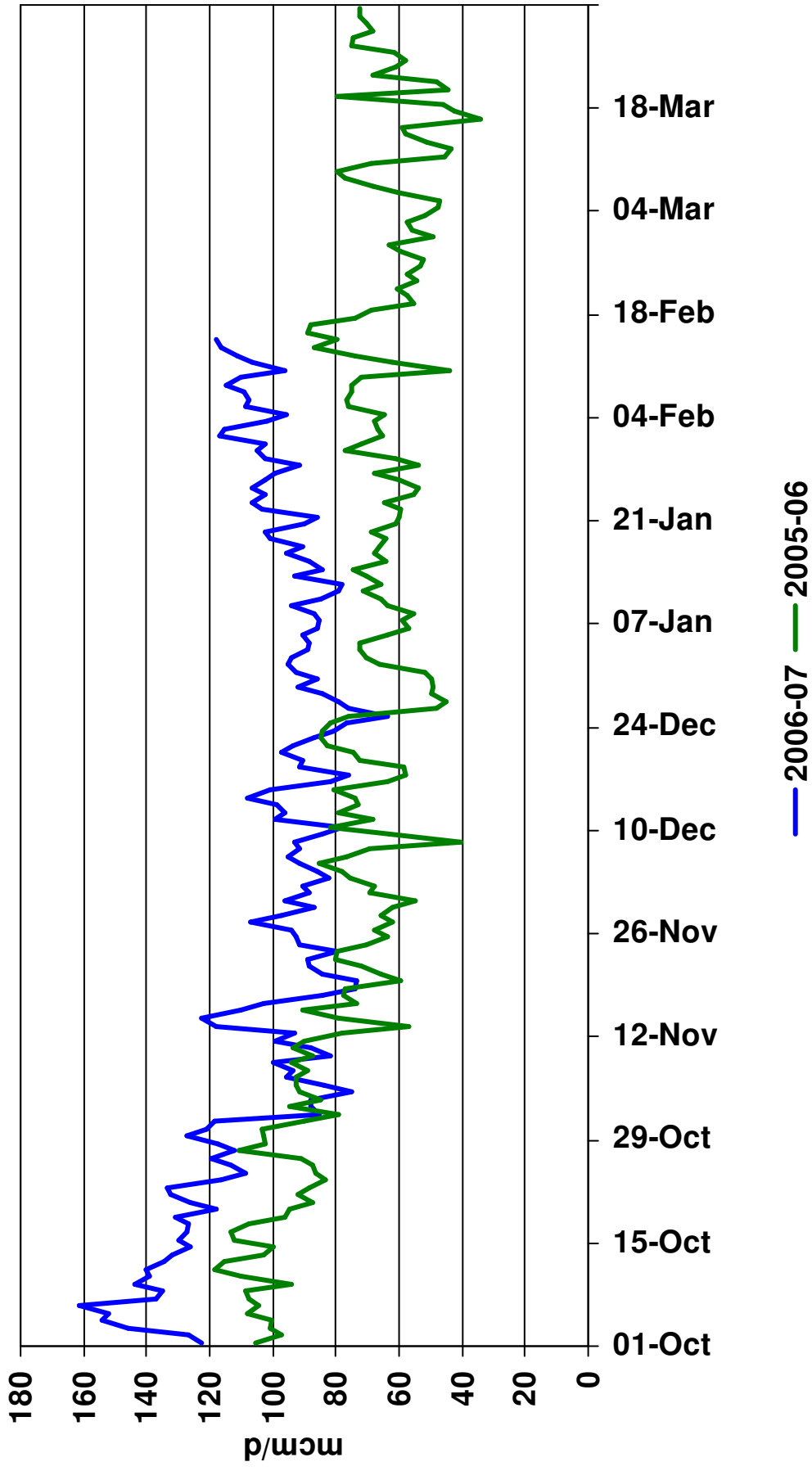
Gas Demands – Actual vs SND and Cold



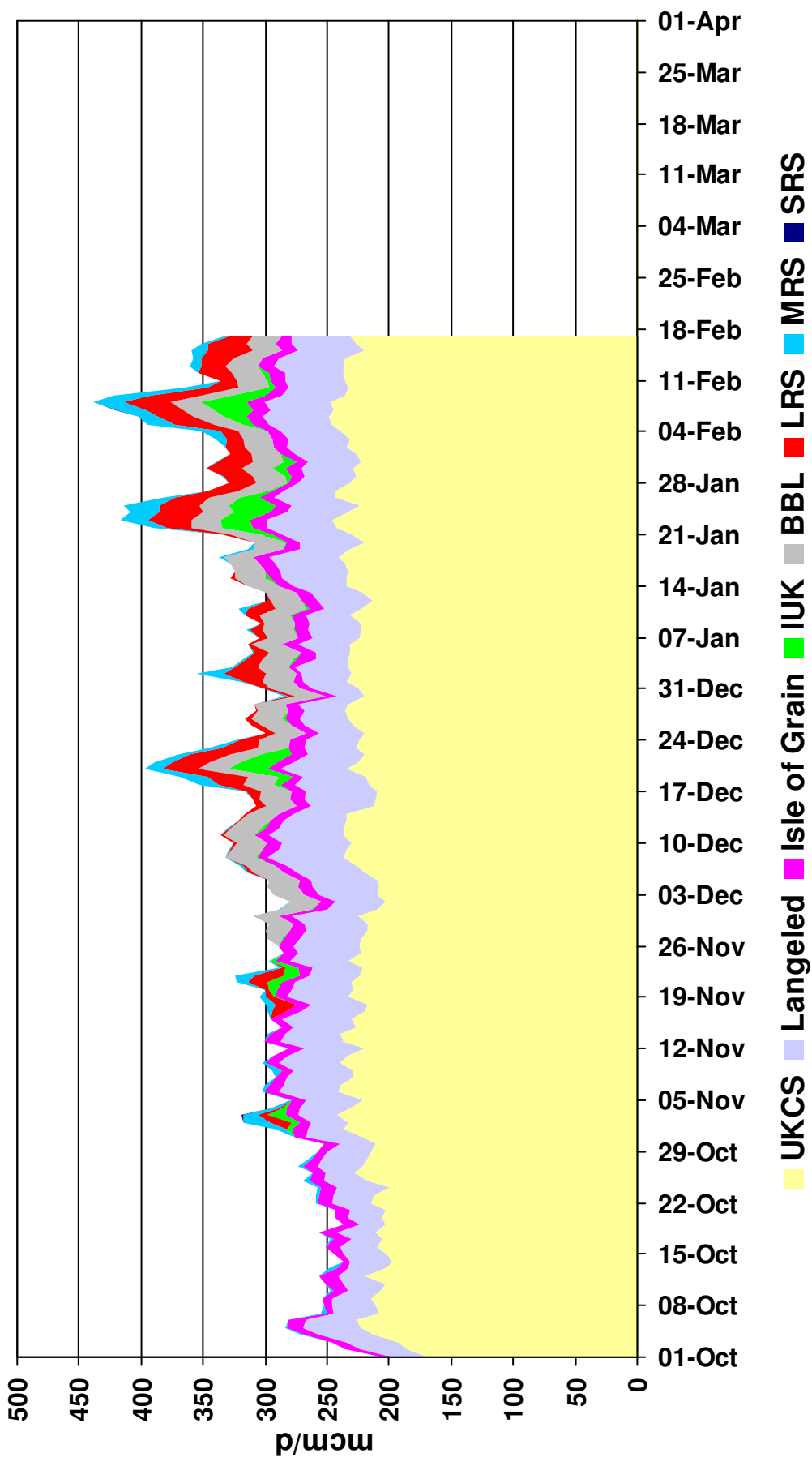
LDZ Demand Oct-Feb 2005-06 vs 2006-07



NTS Demand Oct-Feb 2005-06 vs 2006-07

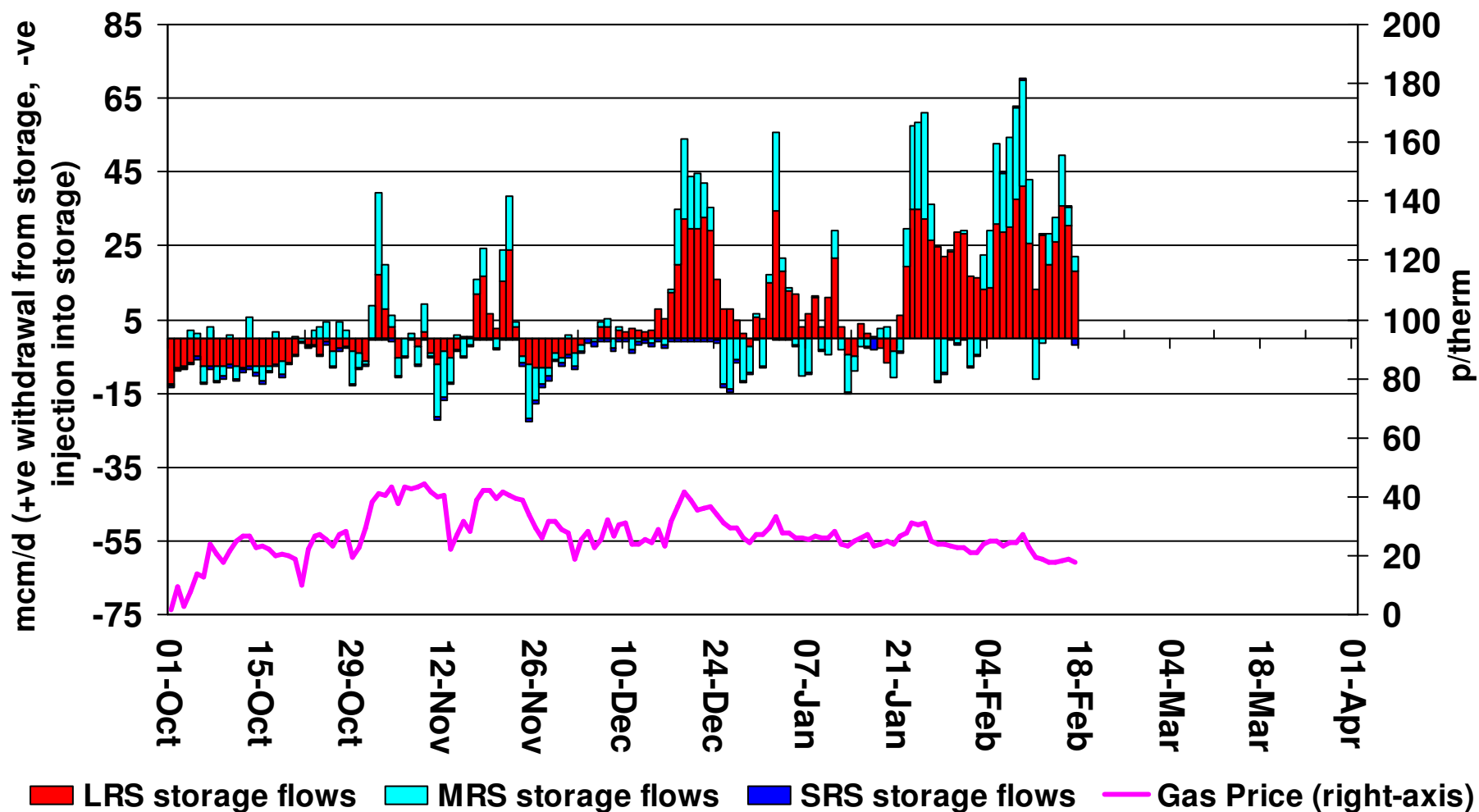


Gas Supply Build Up

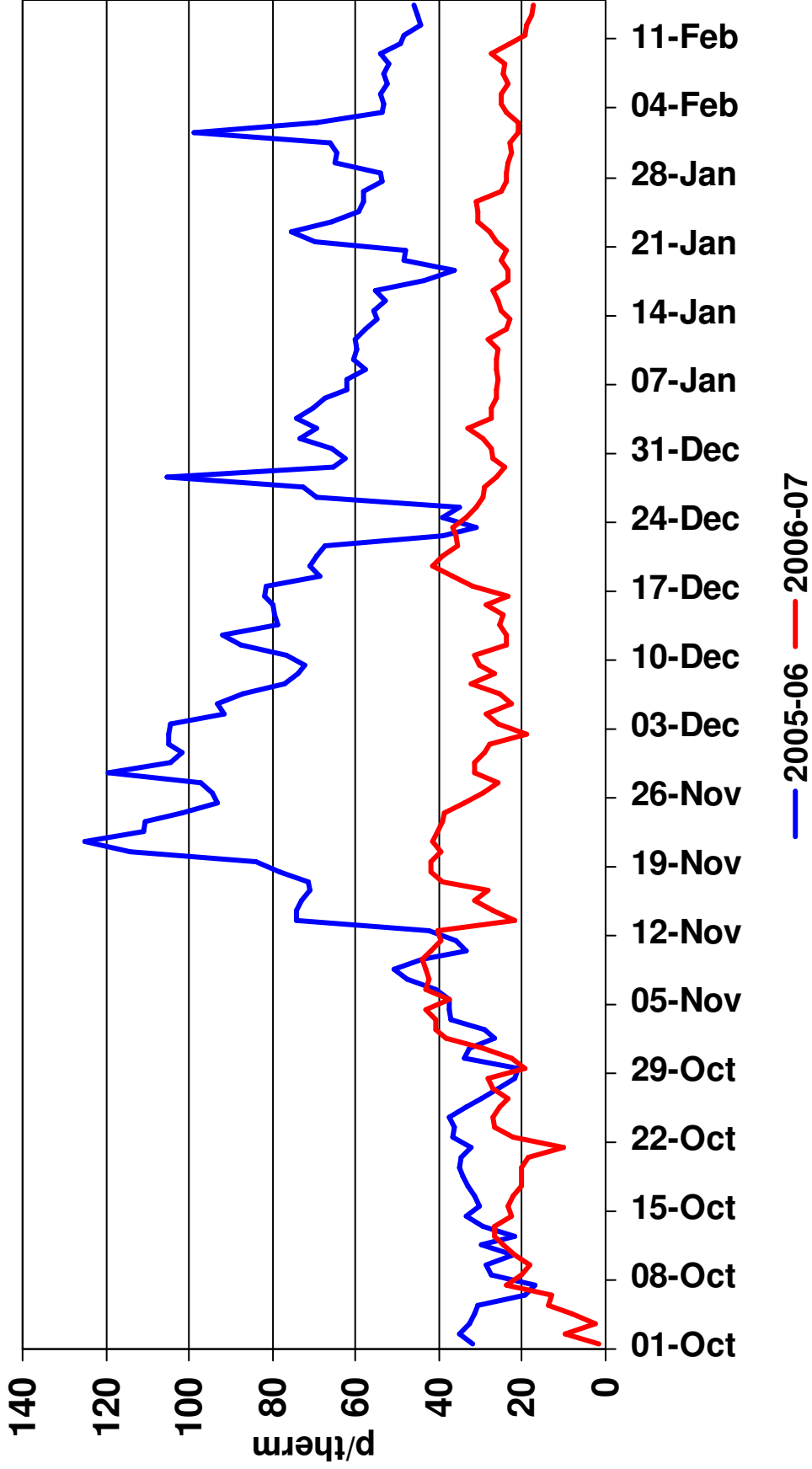


[nationalgrid](#)

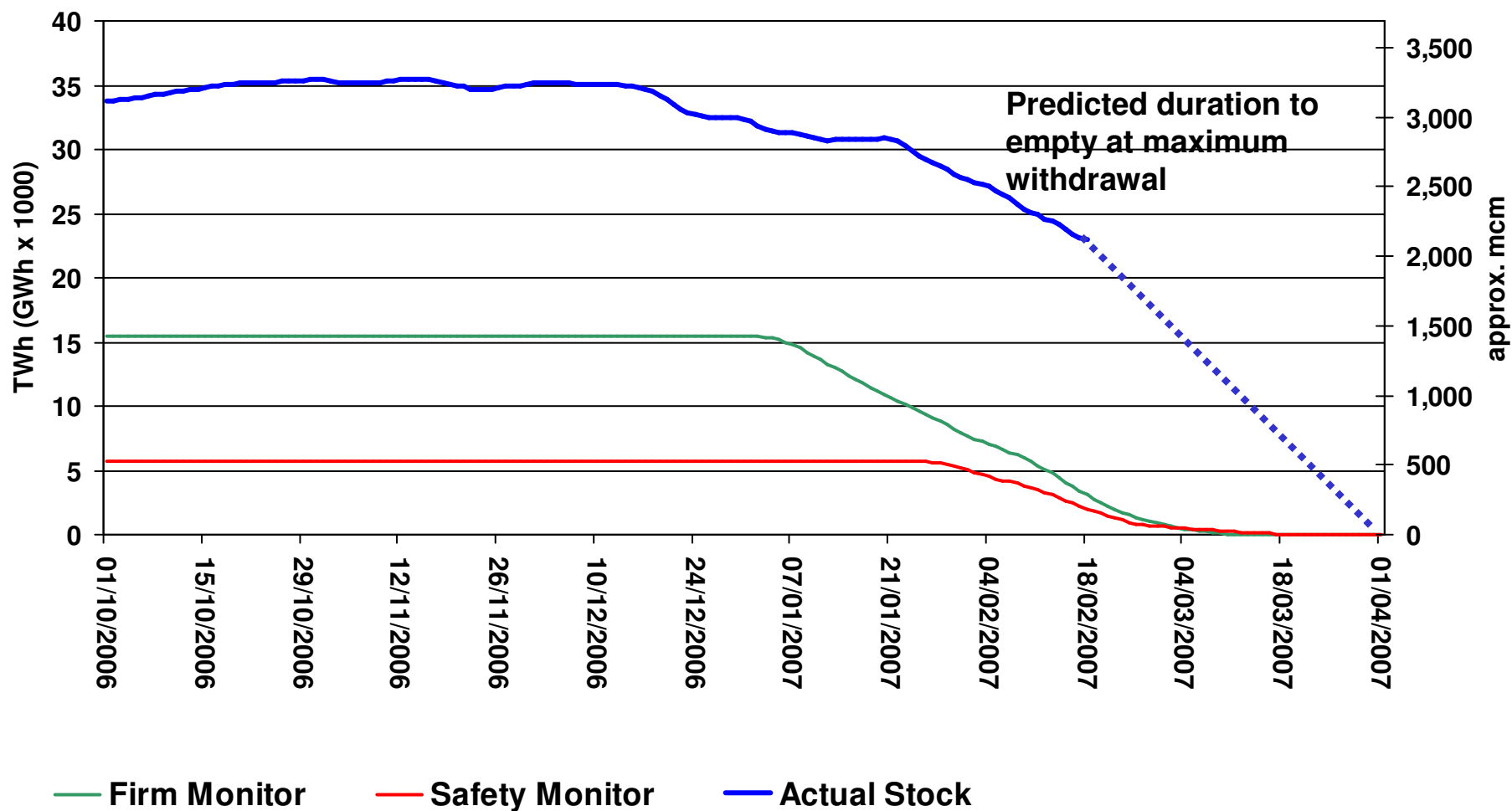
Storage Flows and Gas Prices



SAP Oct-Feb 2005/06 vs 2006/07



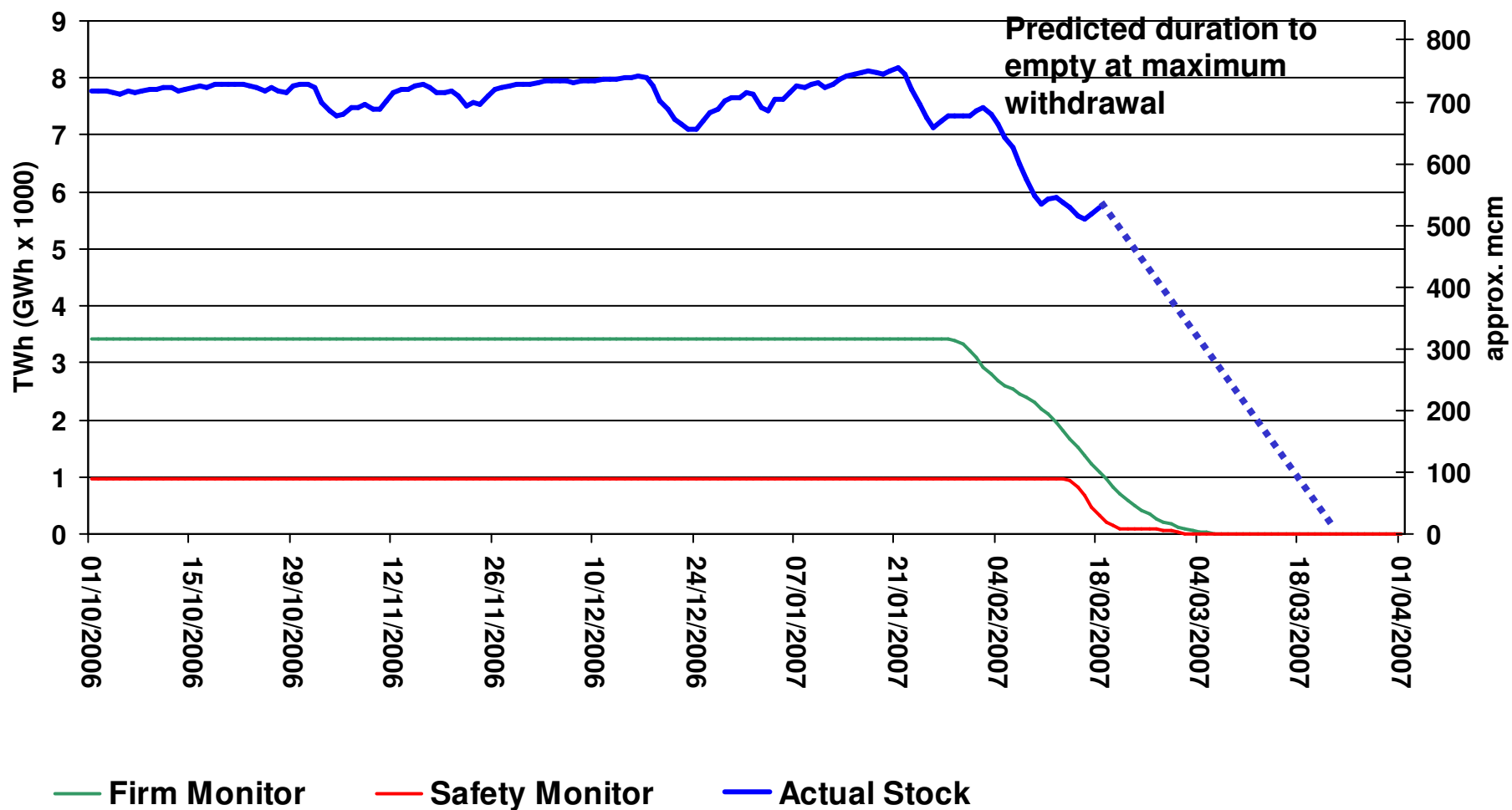
Long Range Storage



nationalgrid

The firm monitor shows the amount of storage required to support all firm load within a 1 in 50 severe winter'

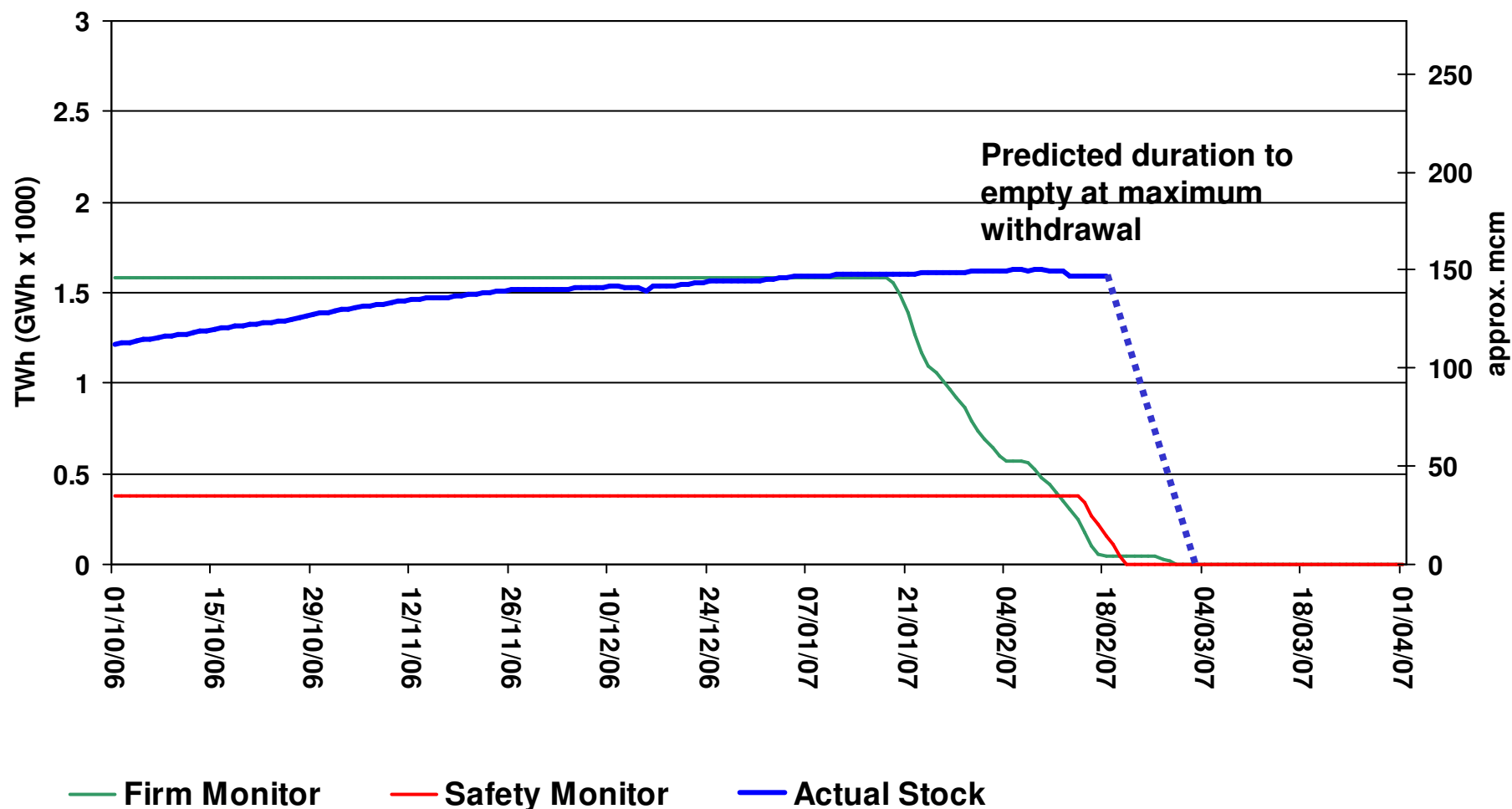
Medium Range Storage



nationalgrid

The firm monitor shows the amount of storage required to support all firm load within a 1 in 50 severe winter'

Short Range Storage



nationalgrid

The firm monitor shows the amount of storage required to support all firm load within a 1 in 50 severe winter'