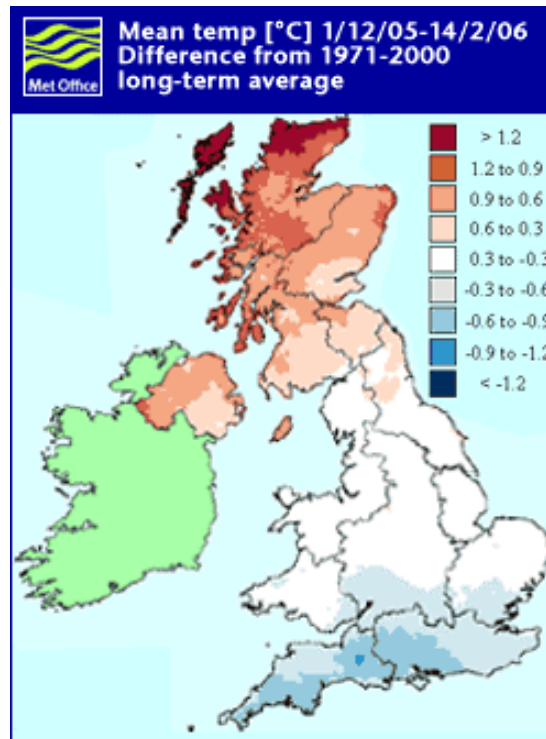


Winter 2005/06 Update

Operational Forum
29th March 2006

UK Temperatures – close to average



UK temperatures

As figures for February continue to come in, there remains marked differences in temperature across the country, e.g. from 1 December 2005 to 14 February 2006 the mean temperature for Scotland was **0.9 °C above** average, while across parts of southern England it was **0.4 °C below** average. The mean temperature for the UK was 3.9 °C which is **0.2 °C above** average, but interestingly southern England has experienced its coldest December and January combined since 1996/1997.

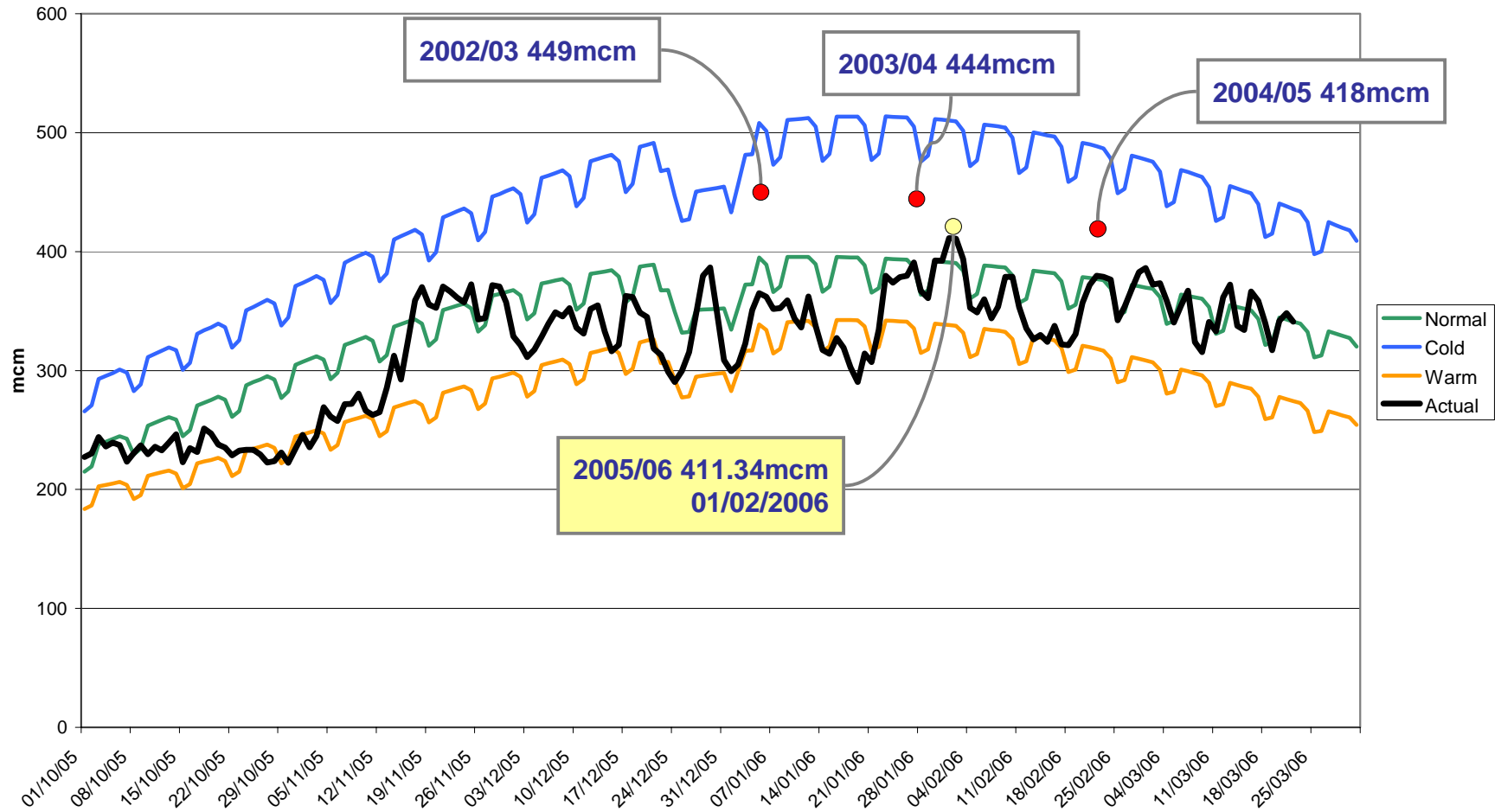
Source: Met Office

Significant SO Actions this Winter

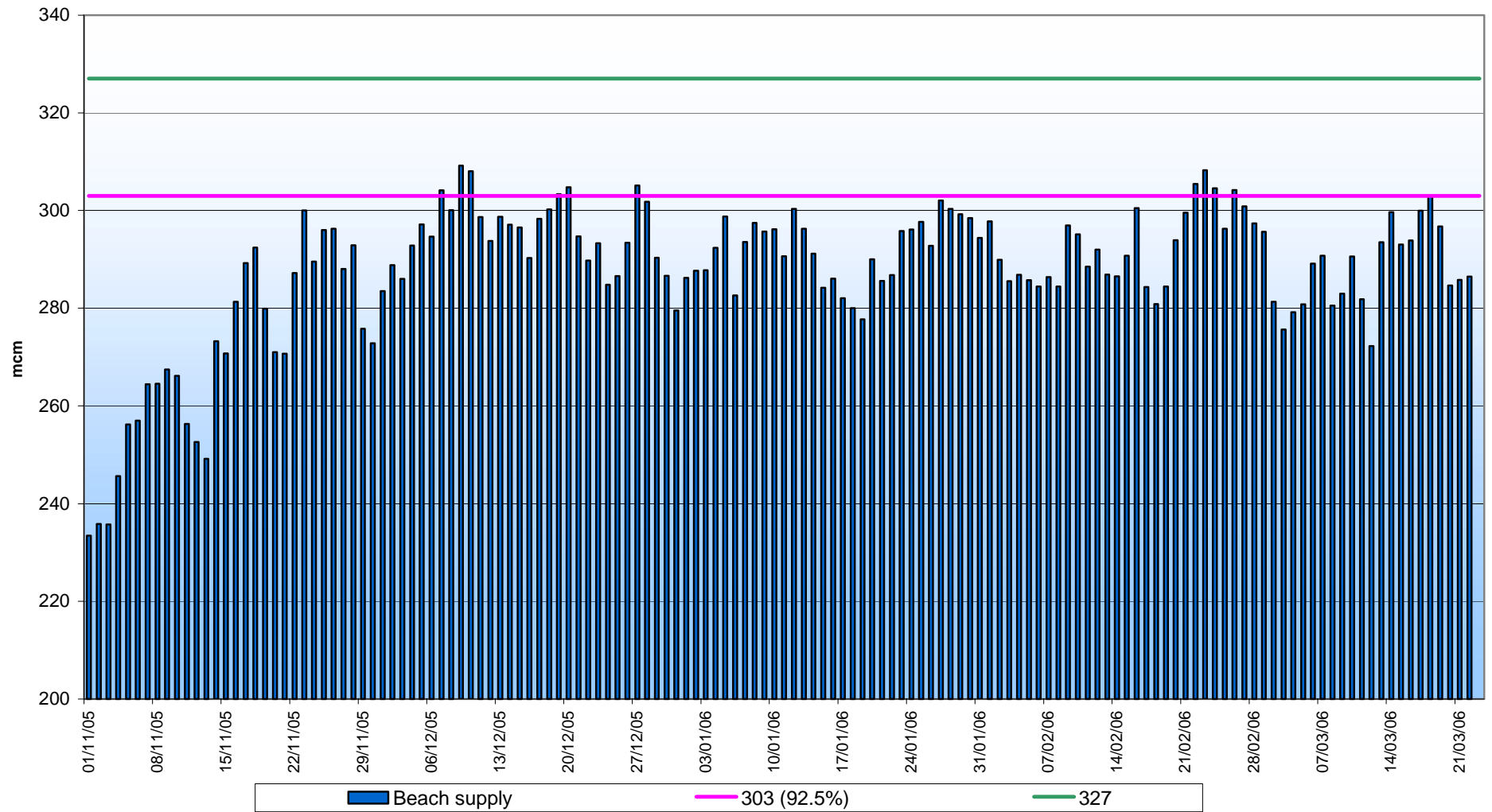
- ◆ Two revisions to Gas Safety Monitors
- ◆ First use of Gas Balancing Alert (GBA)

- ◆ Root of SO actions
 - ◆ Combination of factors:
 - ◆ Low early IUK flows
 - ◆ Loss of Rough
 - ◆ Cold Snaps

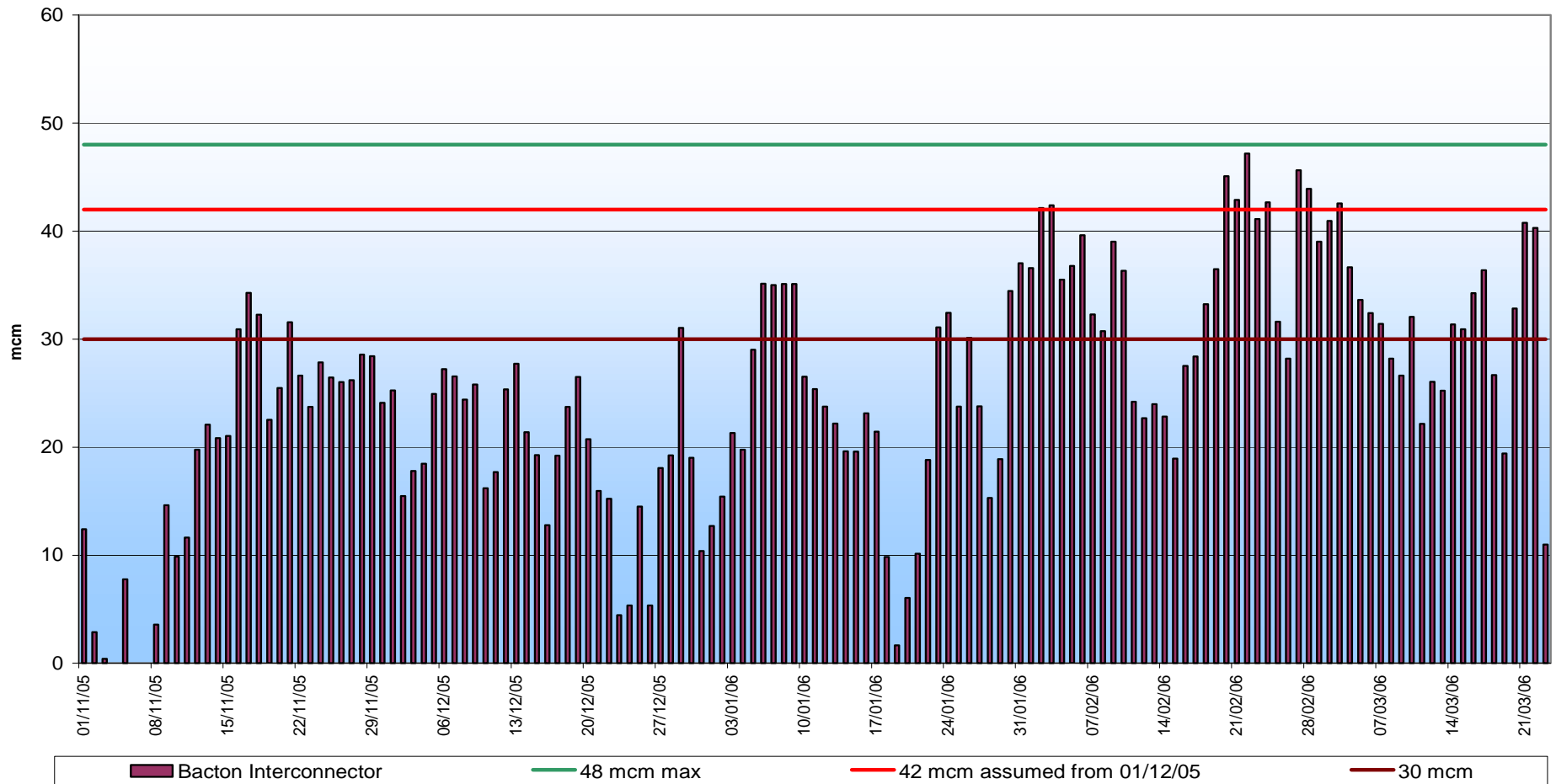
2005/06 Demand Curve



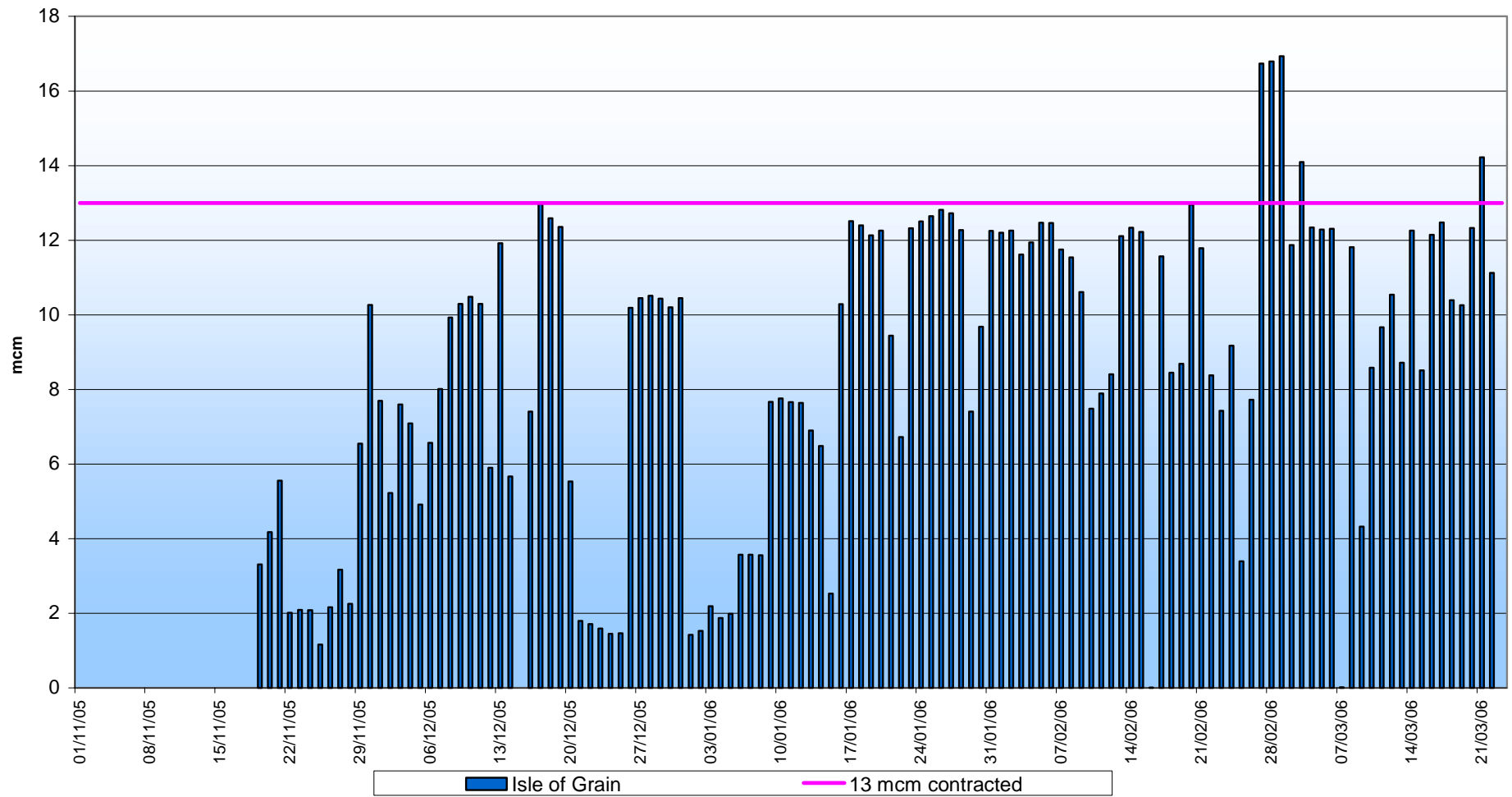
Beach Supplies



Interconnector

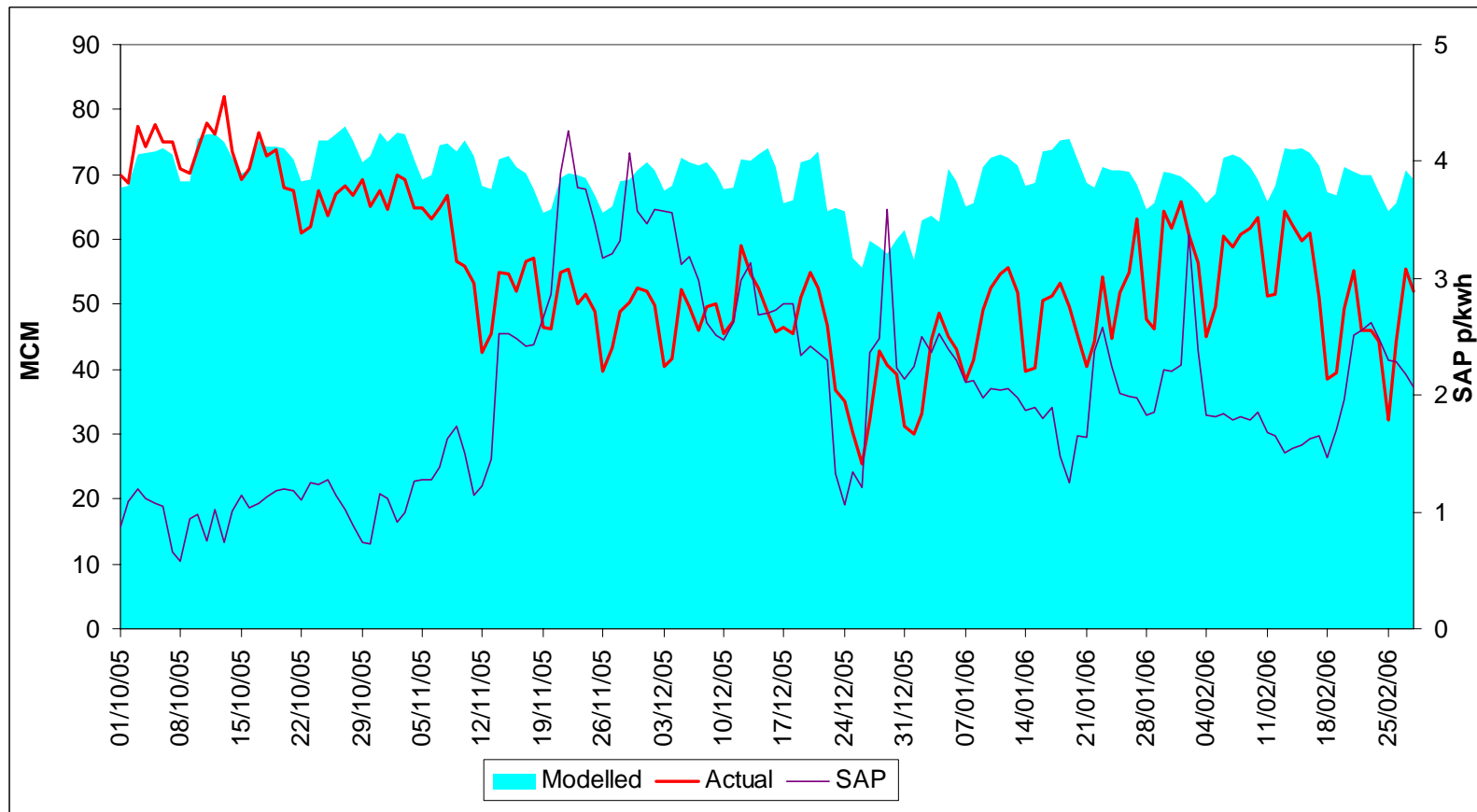


Isle of Grain



Demand Response Activity

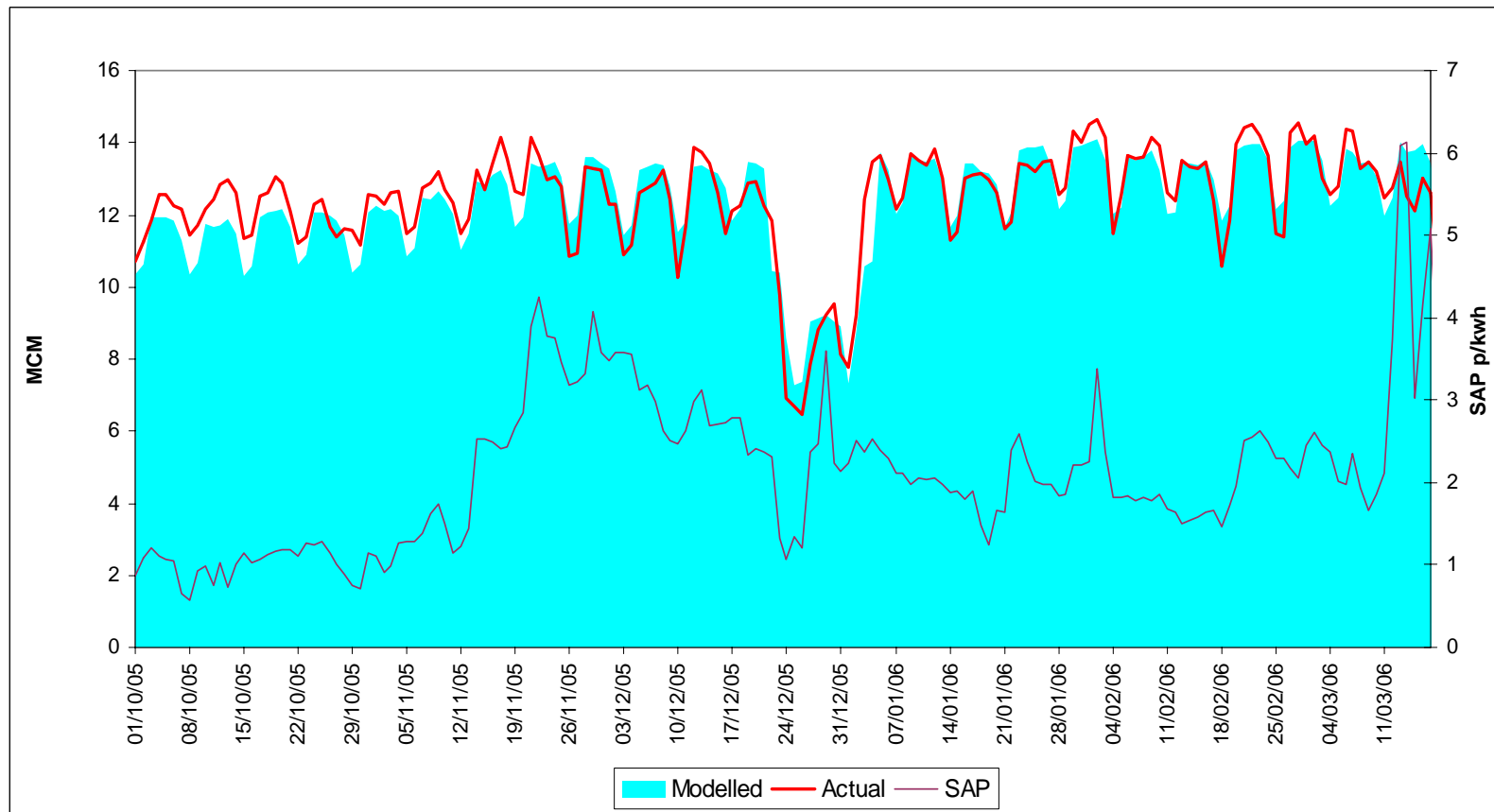
Gas Power Stations connected to the National Grid Transmission System



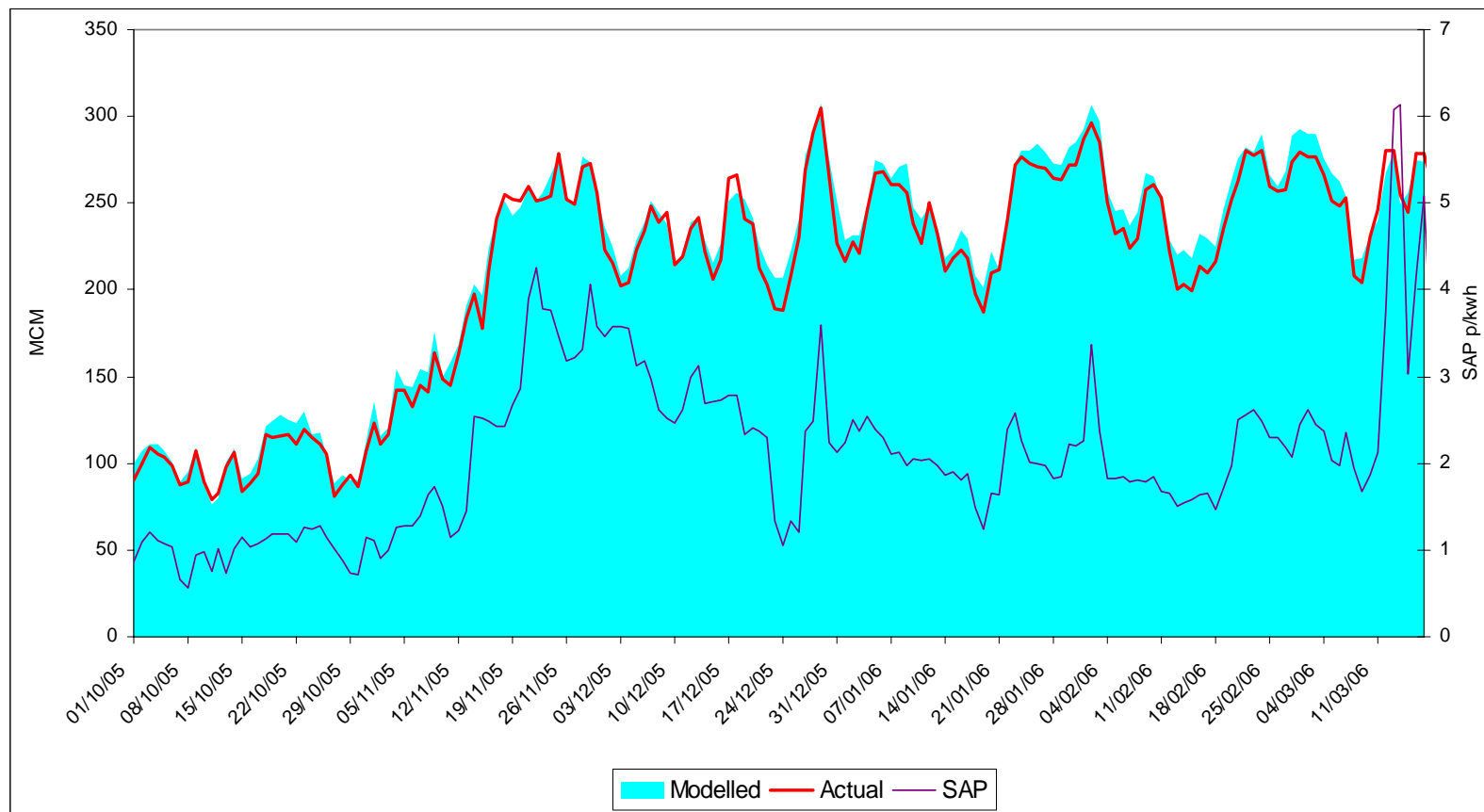
NTS Industrial Loads



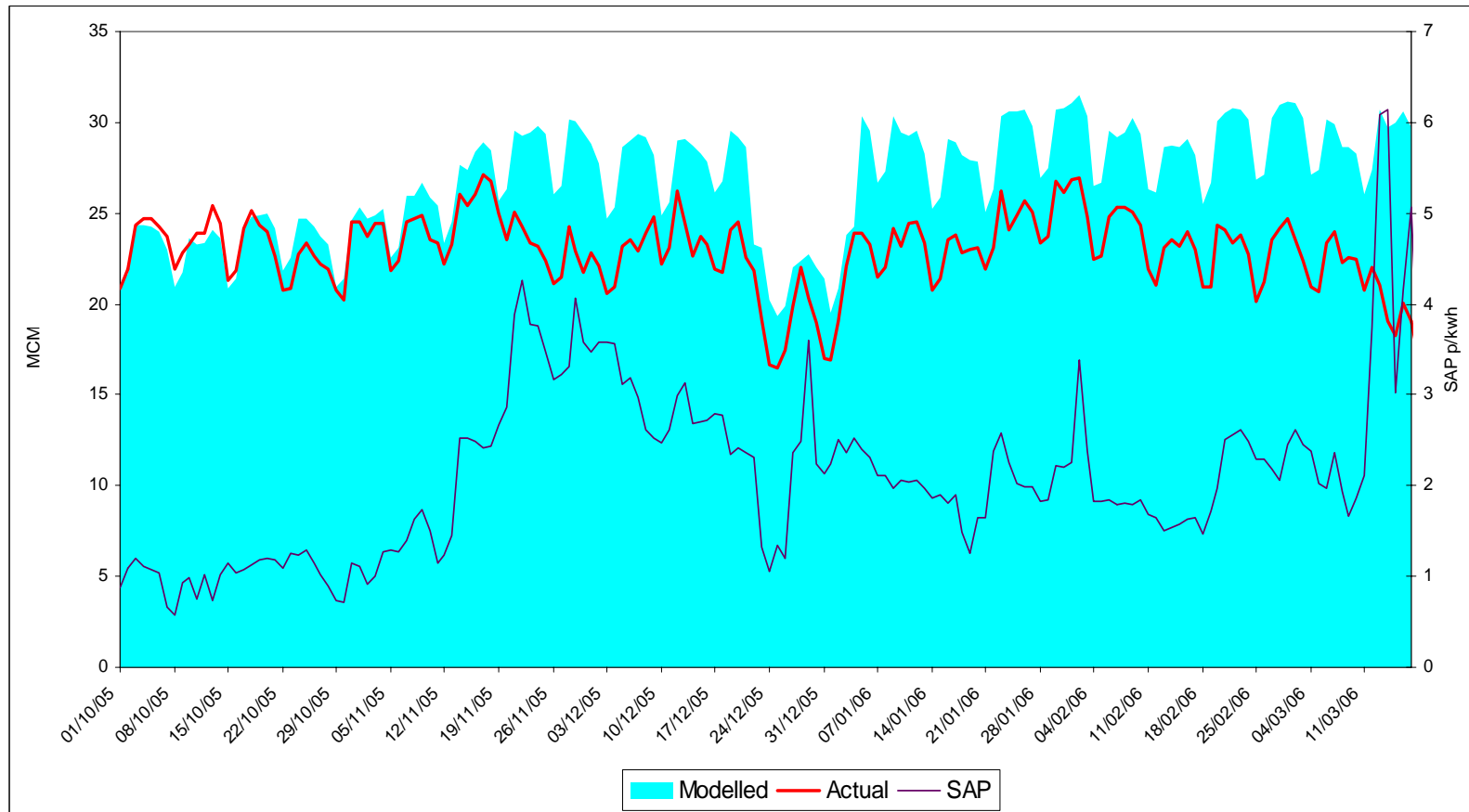
LDZ Daily Metered (DM) Firm



LDZ Non-Daily Metered (NDM)



LDZ Daily Metered (DM) Interruptible



Safety Monitors

Safety Monitor Levels this winter

- ◆ Monitors originally set in September 2005
- ◆ In December they were updated based on winter experience to date
- ◆ Following observed performance on IUK, National Grid reallocated the supply risk it had built into the September 2005 LRS Monitor
- ◆ Following confirmation of duration of the loss of Rough supplies National Grid again revised the monitors

Safety Monitor Level Changes

Storage Type	September Requirement		December Requirement		March Requirement*	
	(GWh)	(% of Space)	(GWh)	(% of Space)	(GWh)	(% of Space)
Long	7806	22.9%	6987	20.5%	625.9	1.8%
Medium	933	12.7%	1202	16.4%	447.7	6.0%
Short	459	26.4%	700	40.2%	128.7	7.1%
Total	9198	21.3%	8889	20.6%	1202.3	2.7%

* - as at 09/03/06

Incident at Rough Gas Storage Facility

16th February 2006



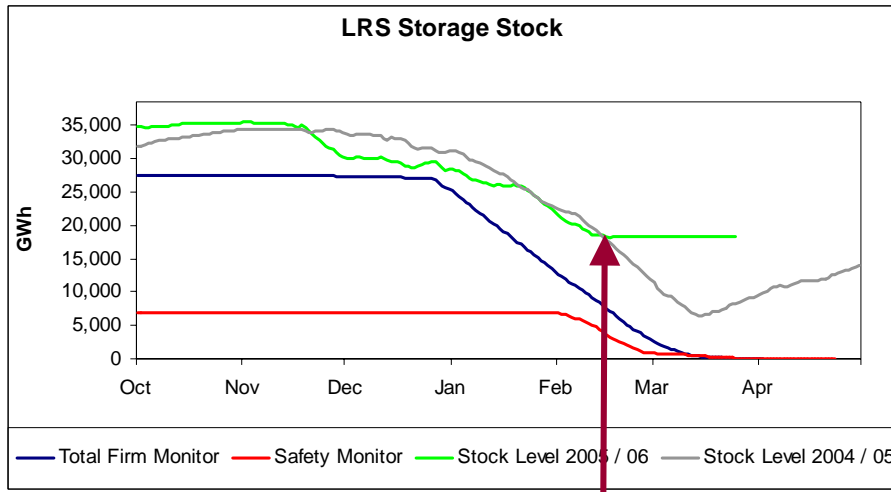
Picture © The Scotsman

As a result of an incident on the Rough 3B Platform, the Rough Gas Storage Facility has been unavailable since 16th February 2006.

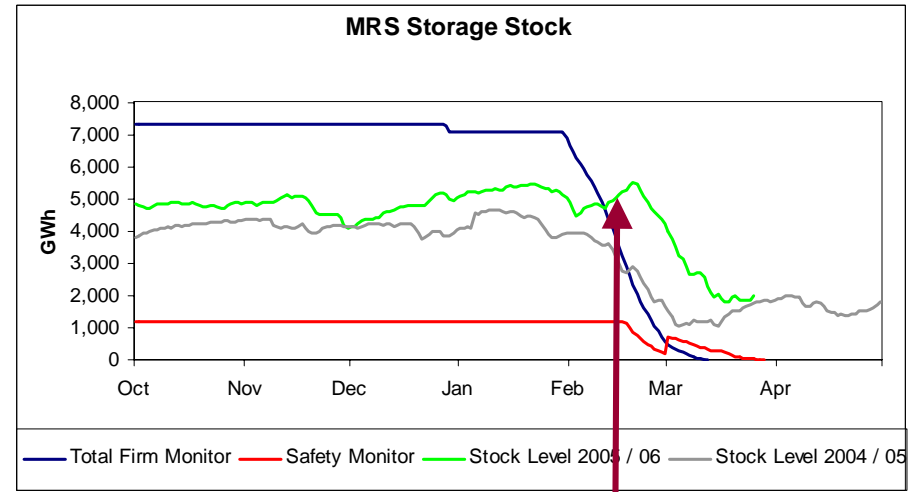
The loss of Rough resulted in greater use of SRS(LNG) and MRS storage in mid March

nationalgrid

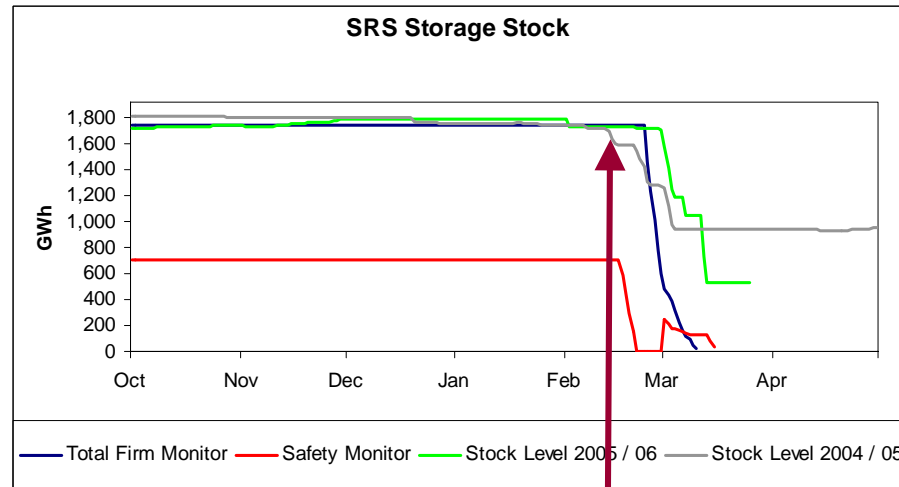
Storage Position



16th February – Rough Incident



16th February – Rough Incident

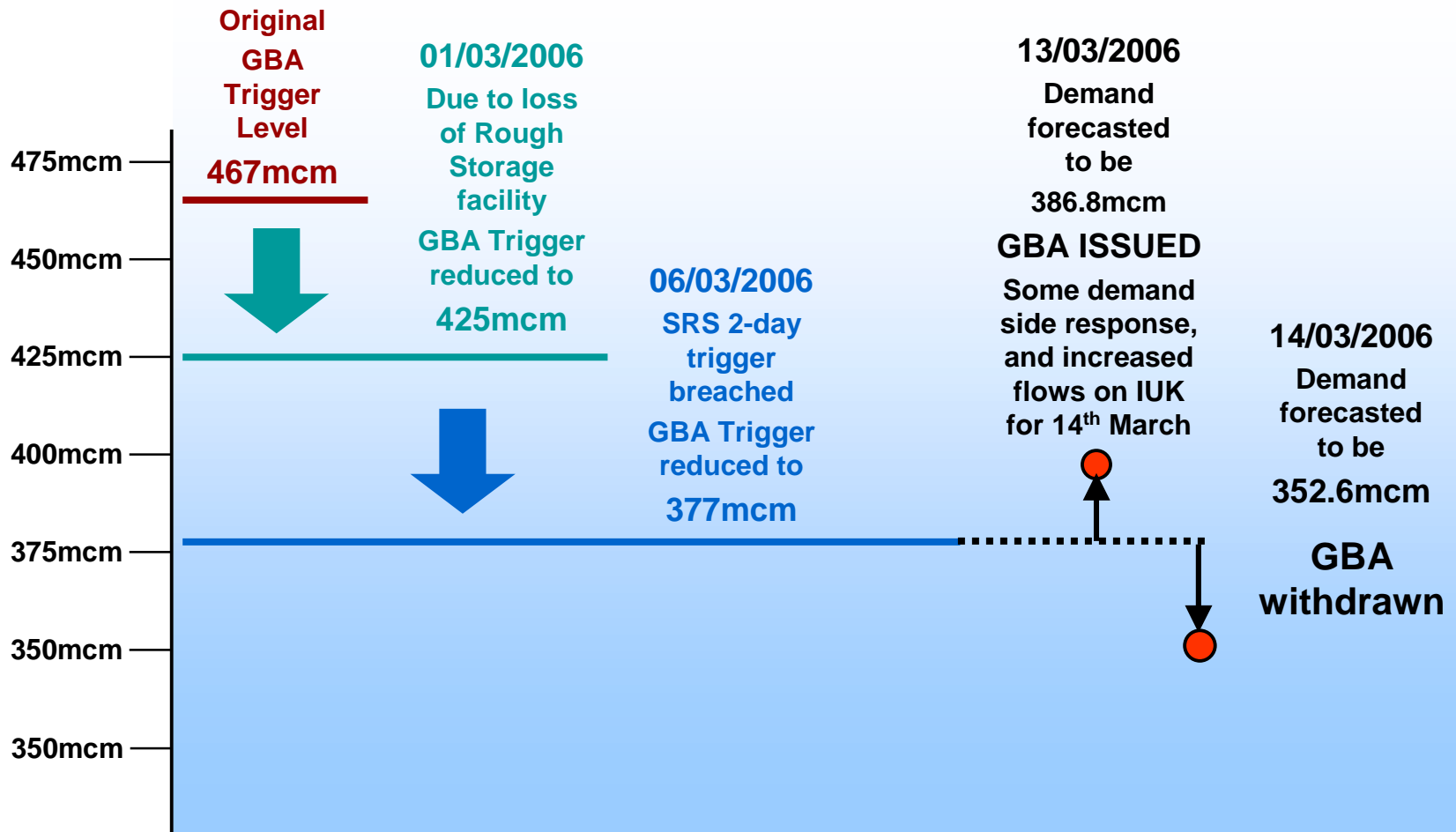


16th February – Rough Incident

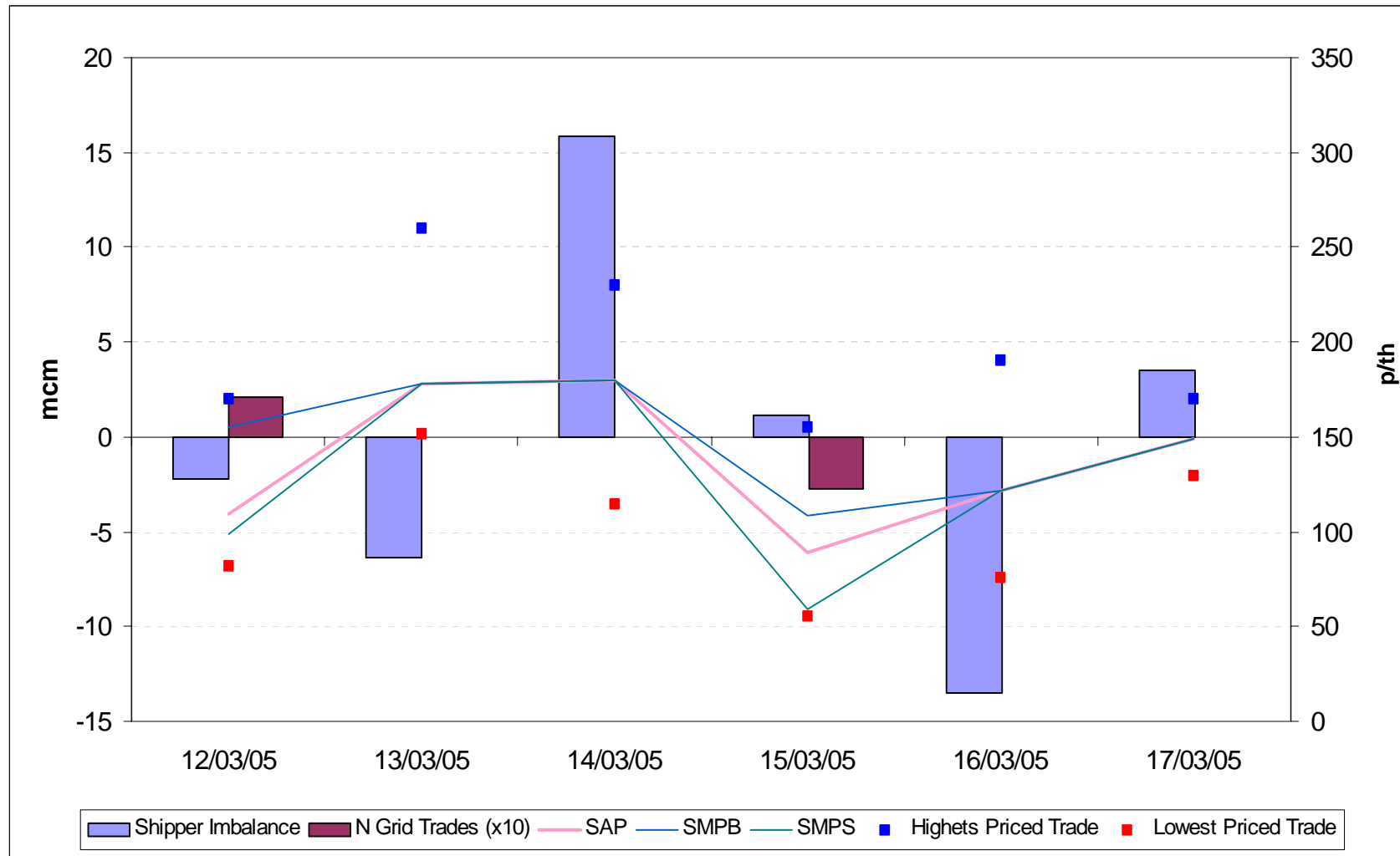
Gas Balancing Alert

Gas Balancing Alert (GBA)

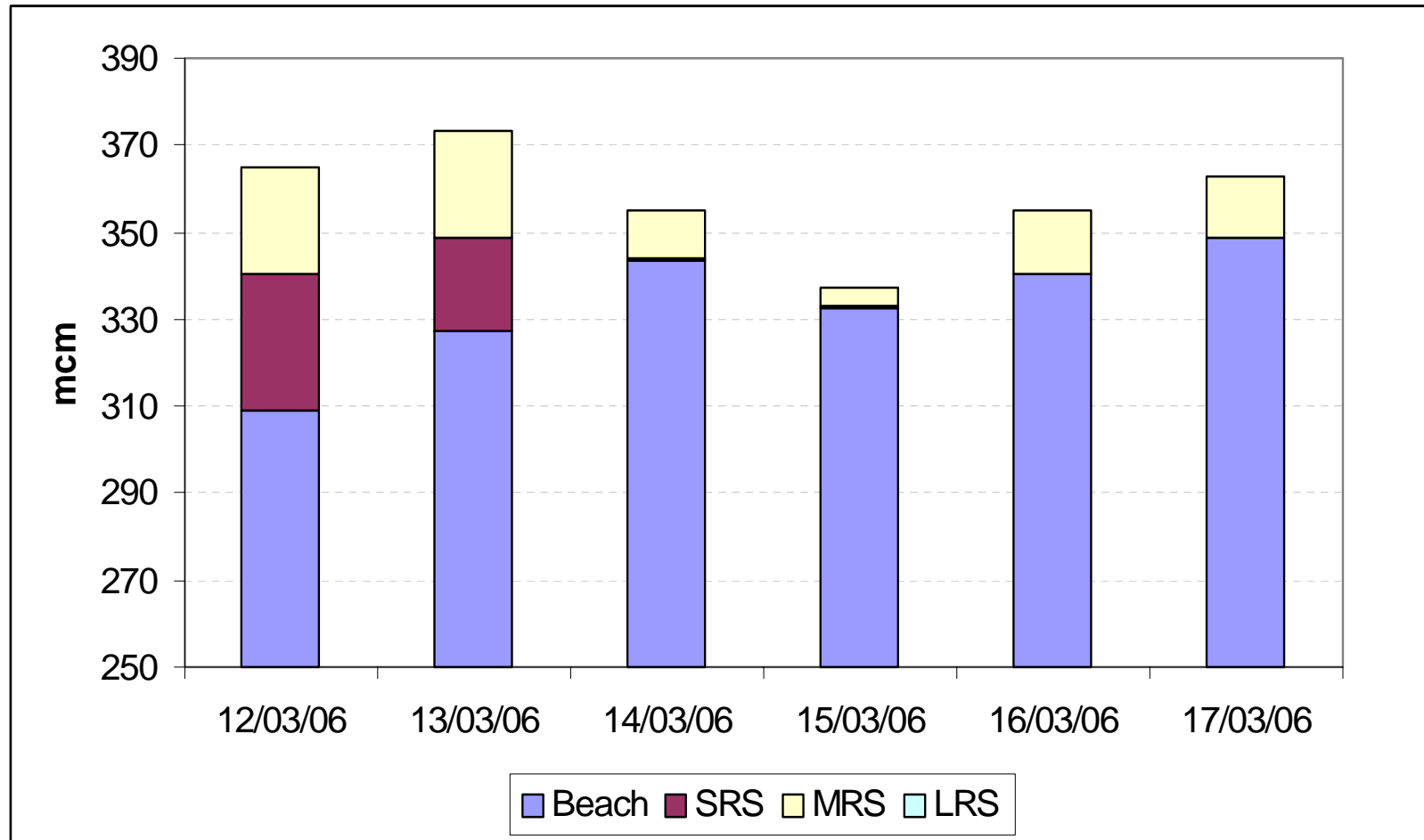
Monday 13th March, 2006



Shipper imbalance Position Gas Day 12/03/06 to 17/03/06



Supplies – Breakdown 12/03/06 to 17/03/06



- No LRS due to Rough being offline following explosion in february

Effect of issuing GBA

- ◆ National Grid are currently analysing the effect that the GBA had on Demand Side Response
- ◆ National Grid would welcome the support of OFGEM and the Shipper Community in collating key information, such as:-
 - ◆ What new or existing contracts were activated?
 - ◆ Was additional Demand Side Response a result of price, the issuing of the GBA, or a combination of both?
 - ◆ Were any actions arising from the GBA being declared effective within the timescales?
 - ◆ What is the view of response arising from LDZ and NTS demands?
 - ◆ Feedback to Frank Gracias