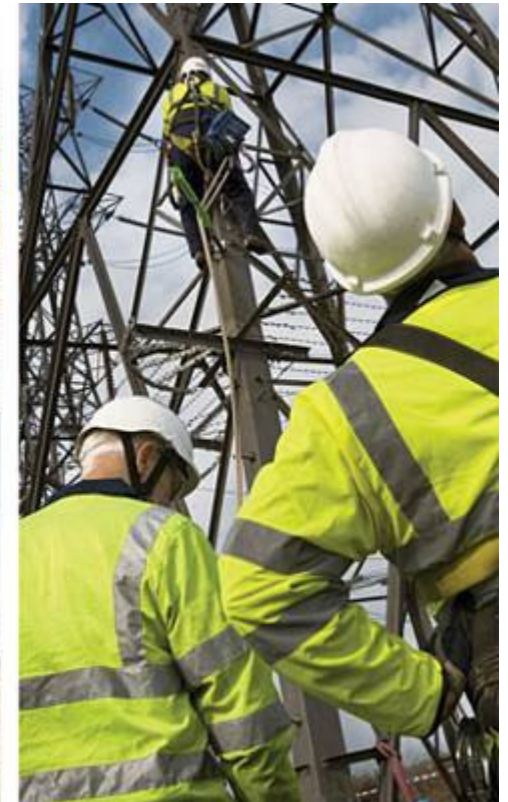


Transmission Workstream – 6th May 2010

National Grid EU Transparency Project Update



nationalgrid

The power of action.™

Contents

- ◆ Background
- ◆ Key Project Updates
 - ◆ Data
 - ◆ Storage
 - ◆ New data items
 - ◆ Functionality
- ◆ Timeline going forward

Background

- ◆ European Transparency Project (ETP) set up to manage National Grid's compliance with recent implementation of EU 3rd Package
 - ◆ Key requirement is for data consistency & transparency across TSOs
 - ◆ Requires additional data to be published (both increased volume & frequency)
- ◆ Project will build on recently implemented MIPI platform and provides opportunity to update some system functionality

Data

- ◆ Data Storage
 - ◆ All data items will be available on-line on a 5 year rolling basis
 - ◆ New data items – data will be collated from 1st October 2010 onwards and therefore 5 full years of data will be available from 30 September 2015
 - ◆ Existing data items – history will increase from go-live and will gradually populate from 2 years to 5 years (2013).
- ◆ Data Items
 - ◆ Final scope still to be finalised but will adhere to EU legislation
 - ◆ 3rd Party Sources (LNG & Storage Providers) have been engaged to assist with additional data provision
 - ◆ Data Dictionary will be updated to reflect new data items to be incorporated

Functionality

- ◆ Graphic Package

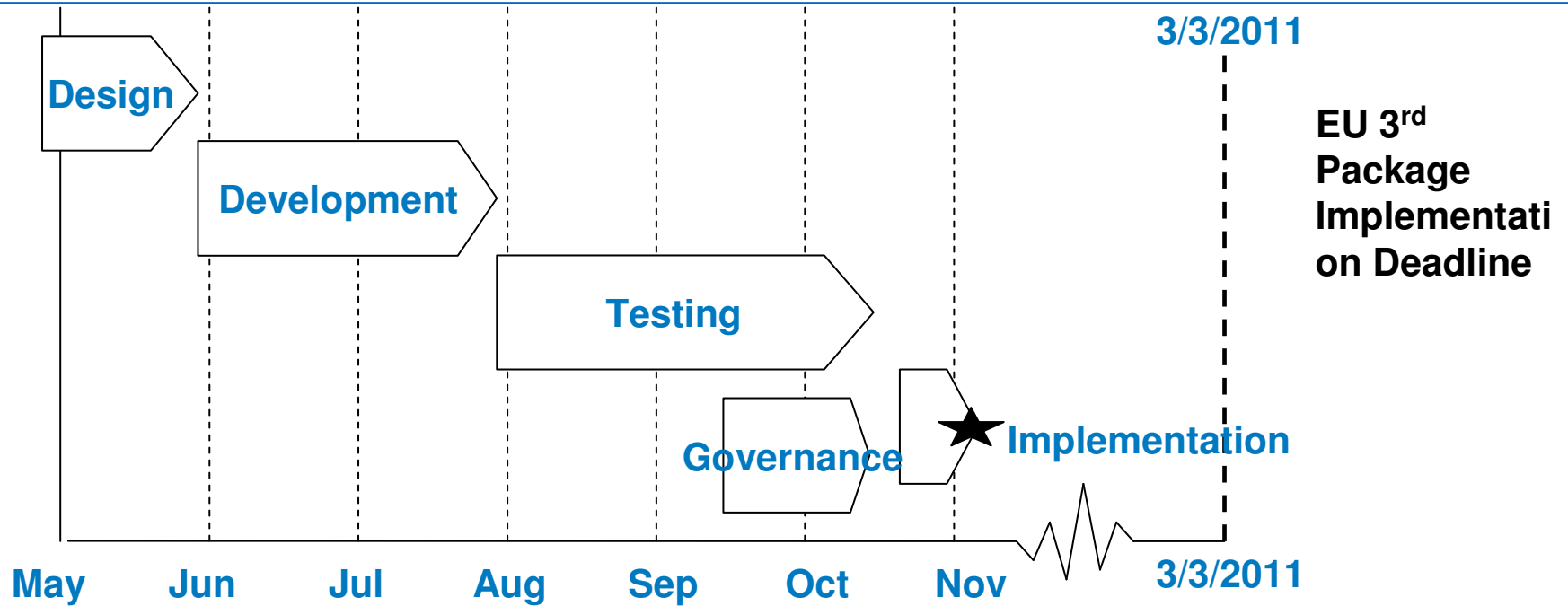
- ◆ As part ETP, National Grid will be upgrading the current graphic package
- ◆ Potential graphical improvements:
 - Multiple axes on the one graph
 - Rolling graphs
 - Stacked area graphs
 - When graphs and charts are printed, there should be no “ghosting”.
- ◆ See appendix 1 for graph illustrations

- ◆ Note 1: The existing graphs held in MIPI will be redesigned
- ◆ Note 2: No changes to customer set up required.

Further Updates

- ◆ Available on current MIPI system via National Grid website
 - ◆ <http://www.nationalgrid.com/uk/Gas/Data/>
- ◆ Also available via ENSO-G data transparency platform
 - ◆ Link to follow in next update
- ◆ Gas Ops Forum
- ◆ Workshops - TBC?

Timeline

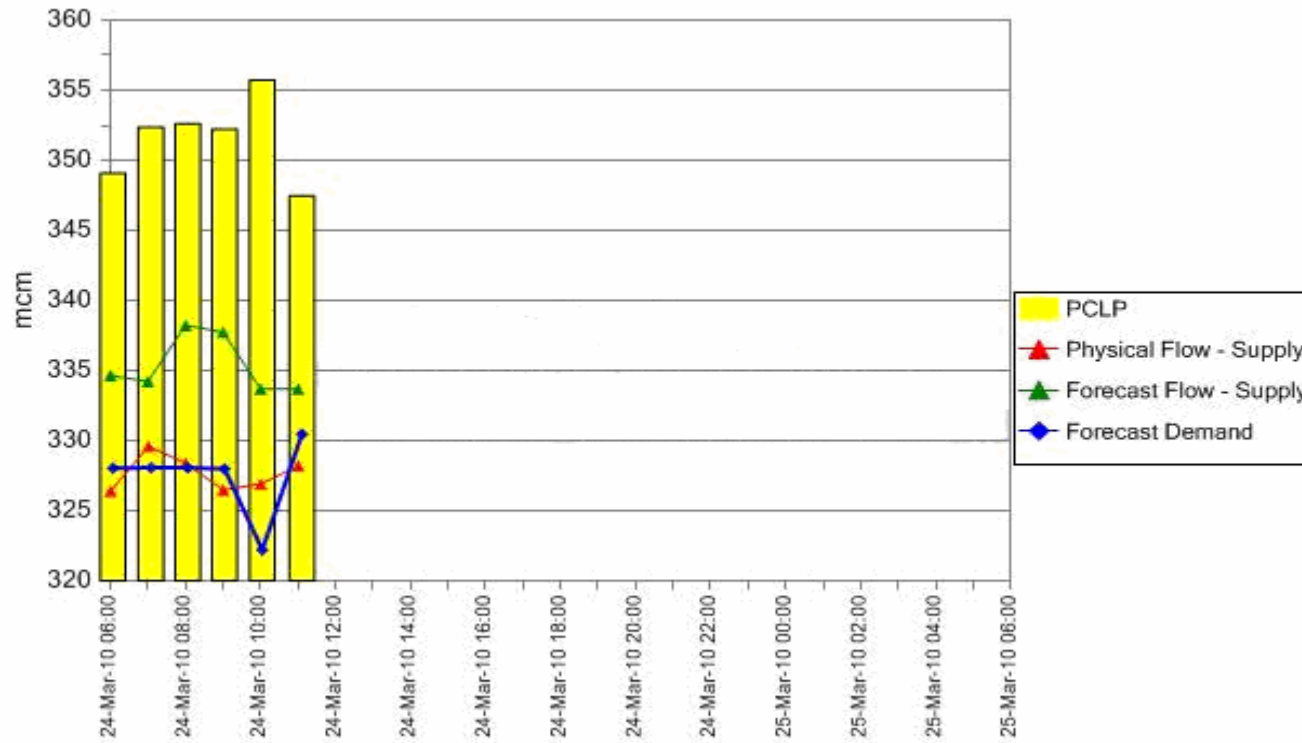


Governance Activity

- | ◆ Governance Activity | Date |
|---|---------|
| ◆ Data Dictionary updated to reflect the MIPI changes | 1 Sept |
| ◆ Submit updated Reporting Manual to UNCC | 2 Sept |
| ◆ UK Link Committee | 9 Sept |
| ◆ UNCC Meeting | 16 Sept |
| ◆ Users Notified | 15 Oct |
| ◆ MIPI ETP go-live | 15 Nov |

Appendix 1 – ETP Example graph (1)

Example of Proposed Forecast Graph



Data for illustration purposes only (to show how graph could look)

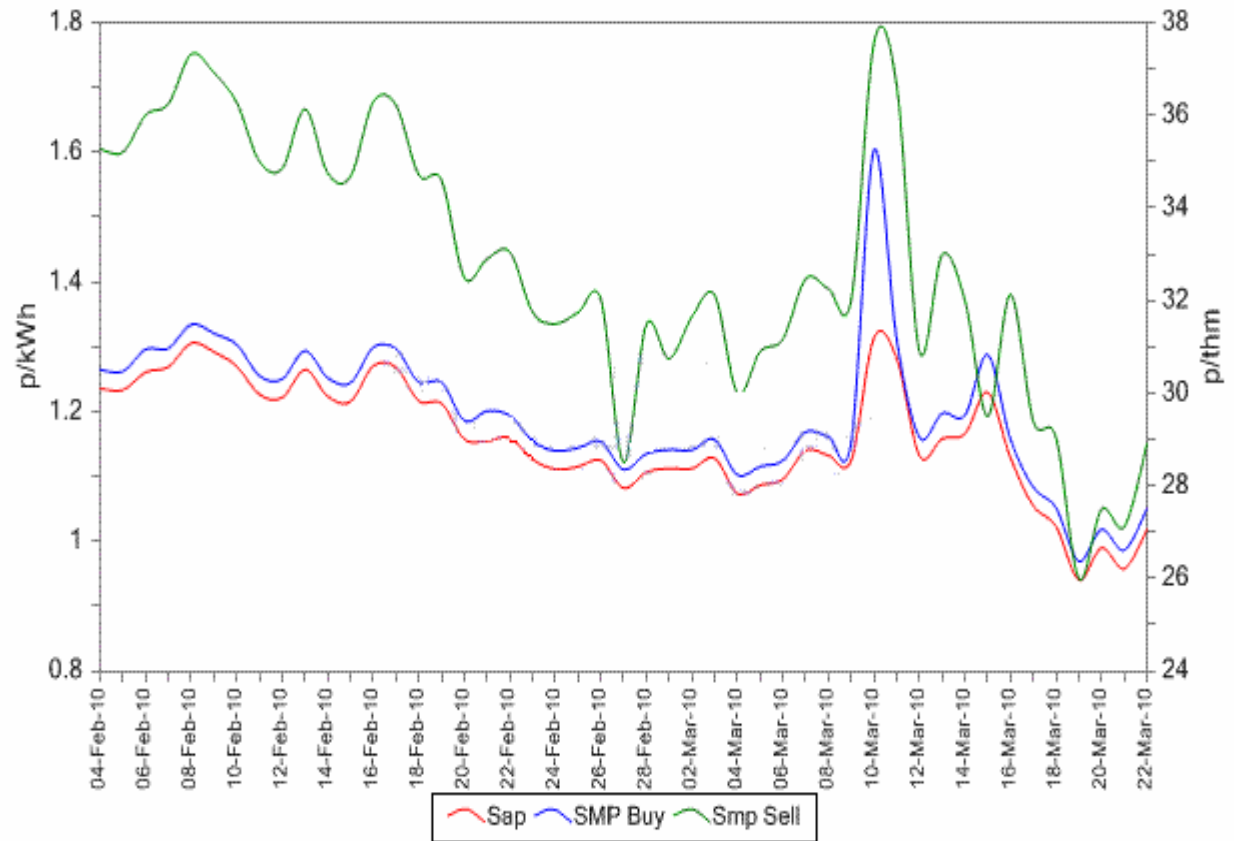
ETP Example graph (2)

Current

Two graphs, one to show p/KWh and one to show p/therm

Proposed

One graph to show p/KWh and p/therm on different axis.



Data for illustration purposes only (to show how graph could look)