

# Operational Overview

---

**Nolan Robertson**

**nationalgrid**

The power of action.™

# Agenda

**Weather**

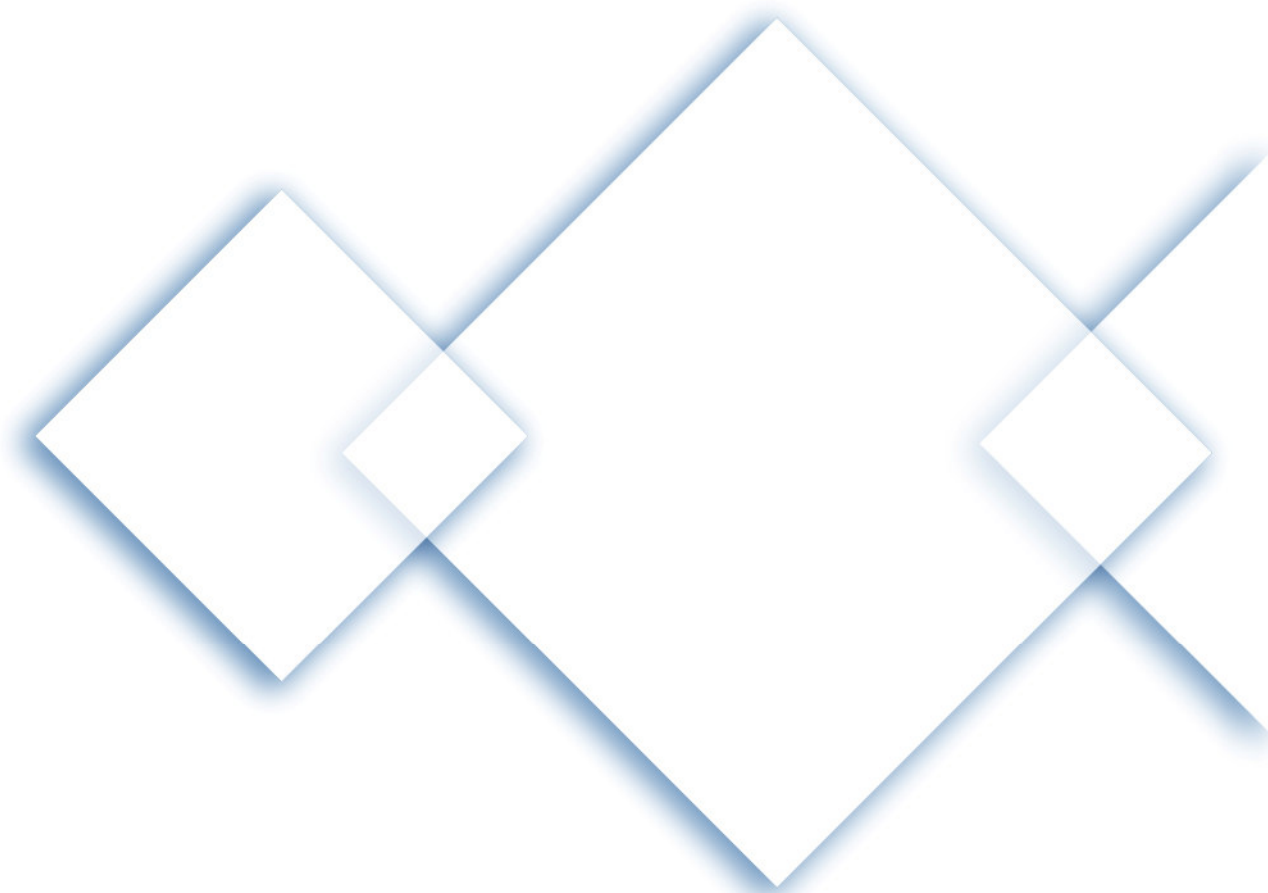
**Demand**

**Supply & Storage**

**Market & Prices**

**Capacity**

**Throughput & Neutrality**



# Operational Overview

---

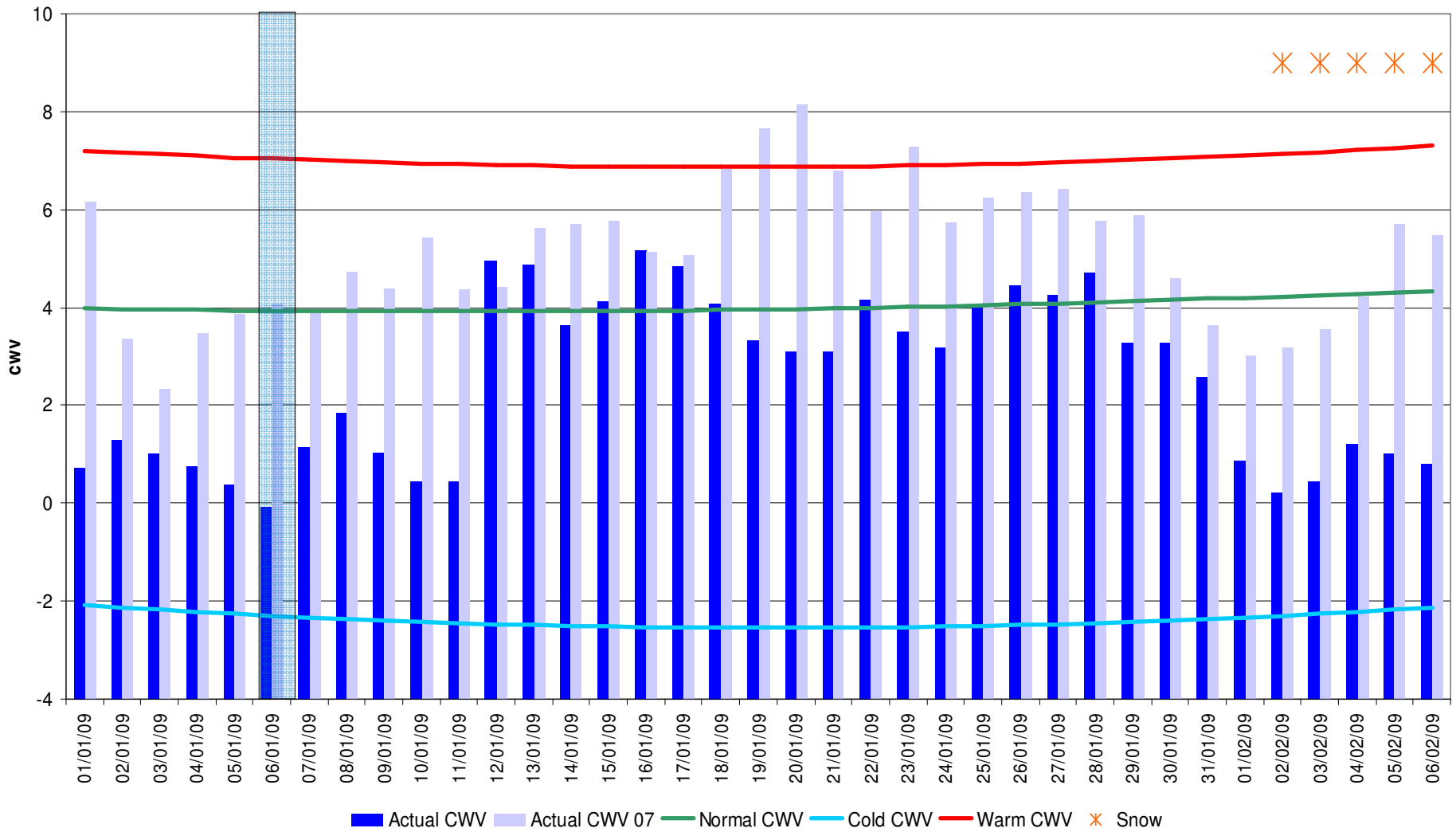
**Weather**

**nationalgrid**

The power of action.™

# Composite Weather Variables

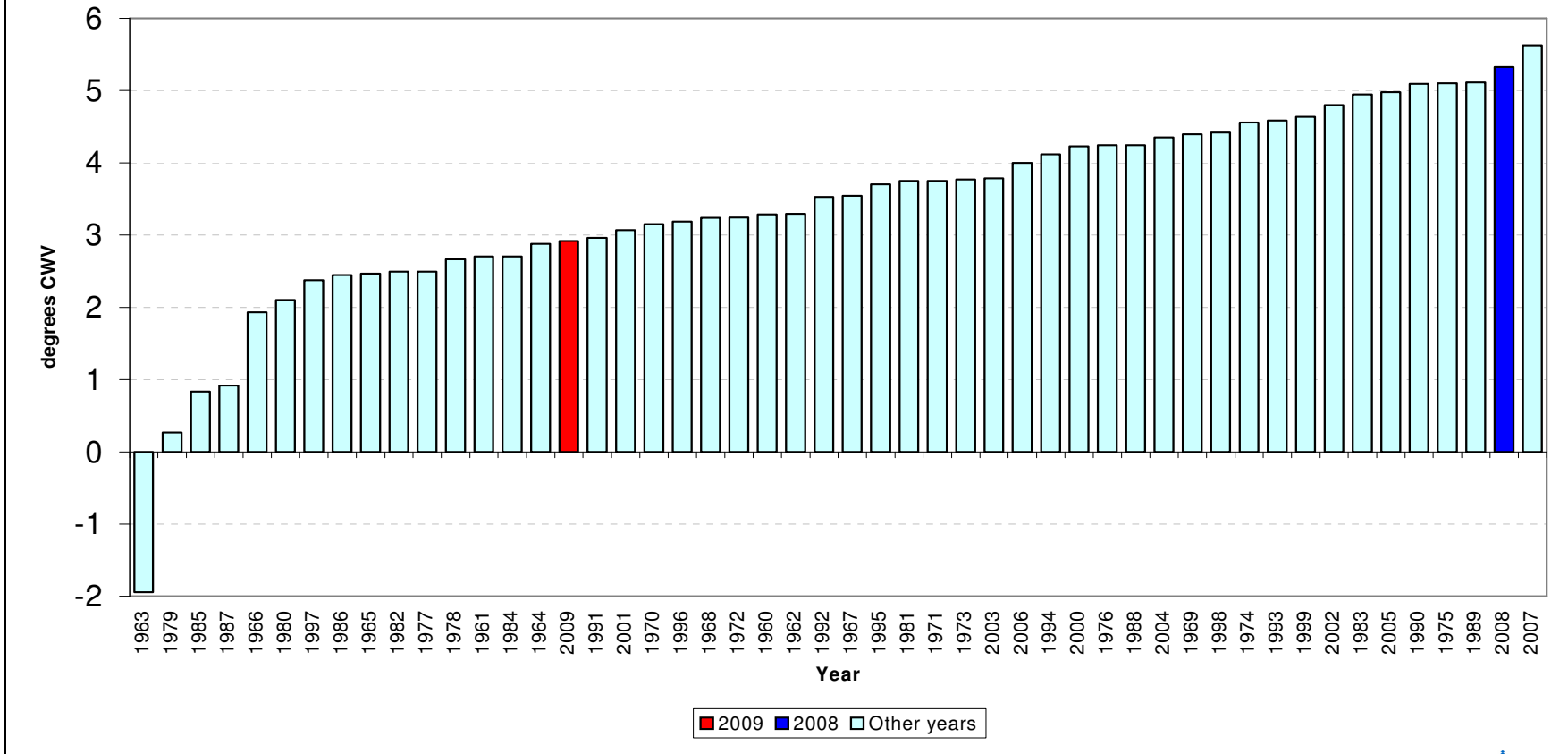
From 01-Jan-2009 to 06-Feb-2009



# Weather

January 2009 was the coldest January since 1987

## Mean National Composite Weather for January last 50 years

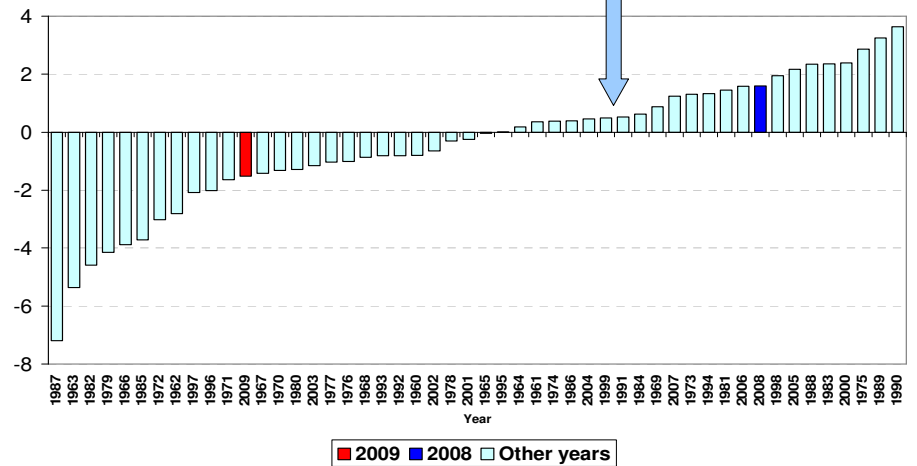


# Weather

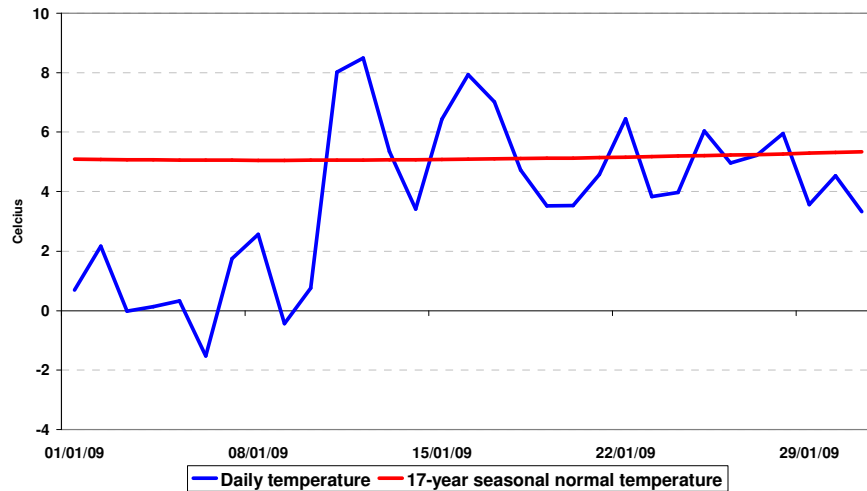
It was very cold for the first 10 days of the month with average temperatures for the rest of the month.

Minimum and maximum temperatures were significantly colder than the last 2 years. January 2009 is highlighted in red and January 2008 in blue.

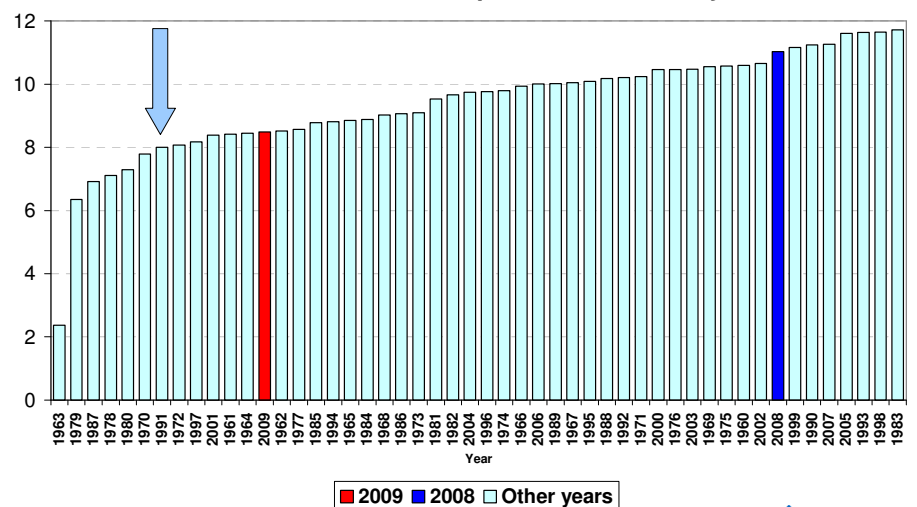
Minimum National Temperature for January

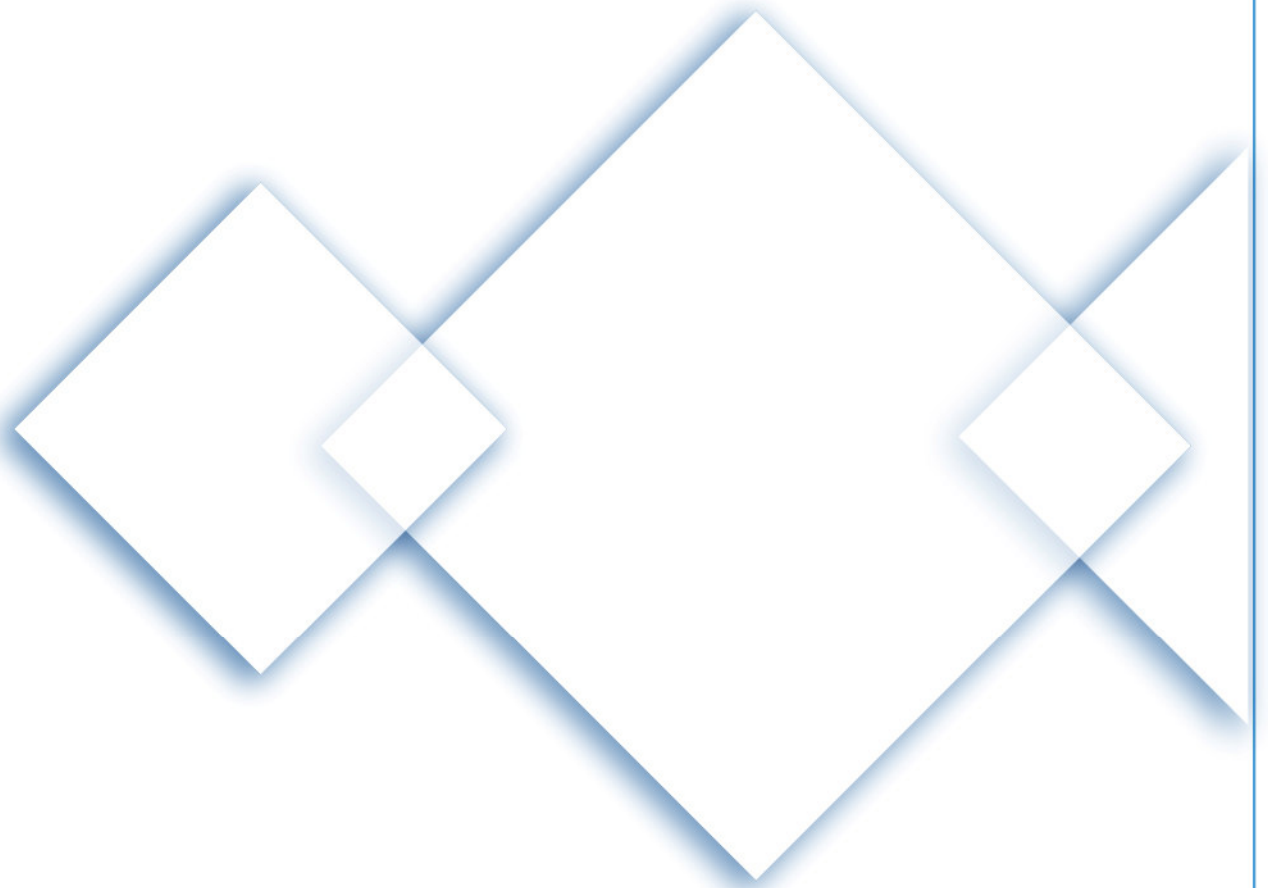


Actual and Seasonal Normal Temperature for January



Maximum National Temperature for January





# Operational Overview

---

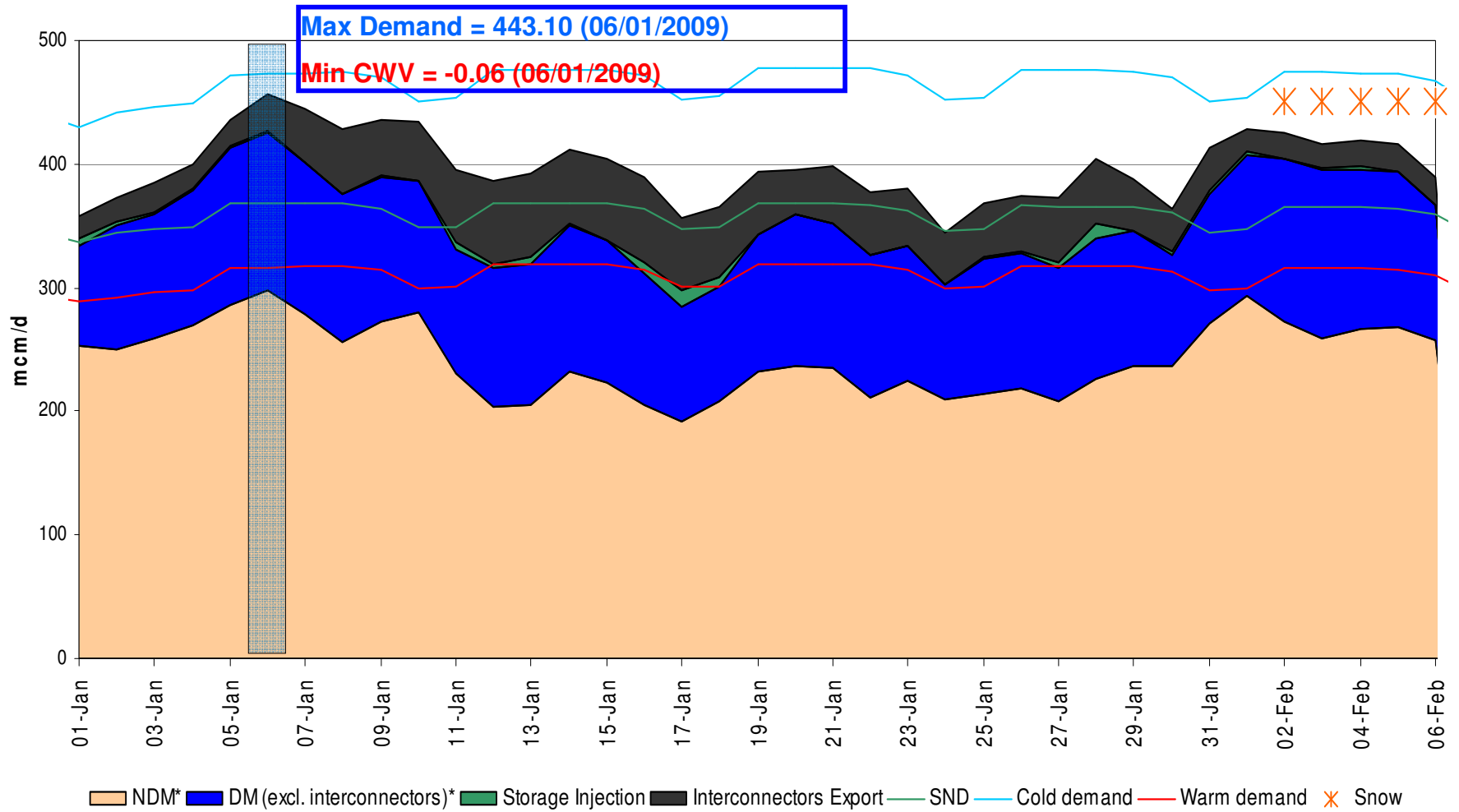
**Demand**

**nationalgrid**

The power of action.™

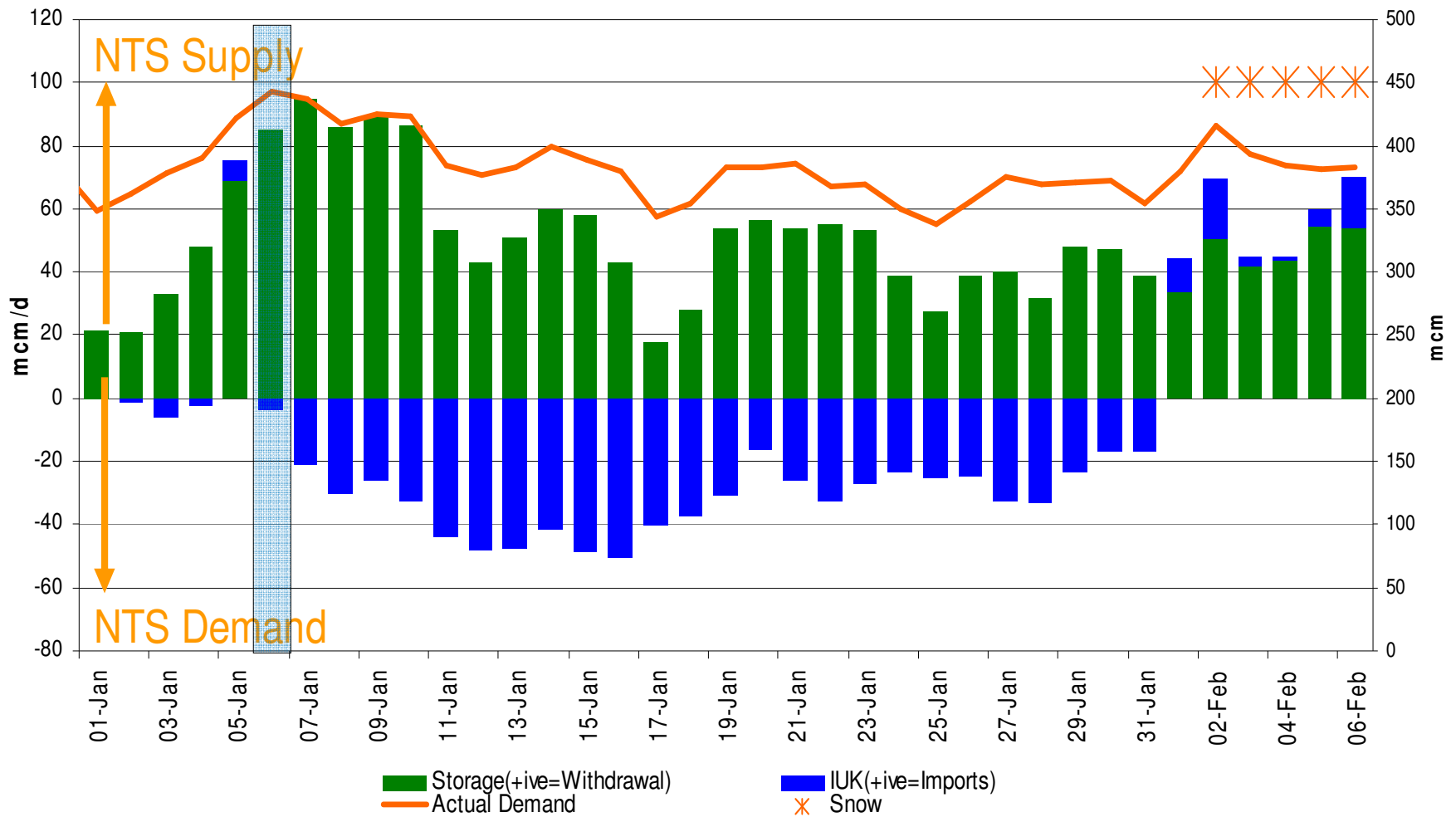
# Gas Demand Breakdown

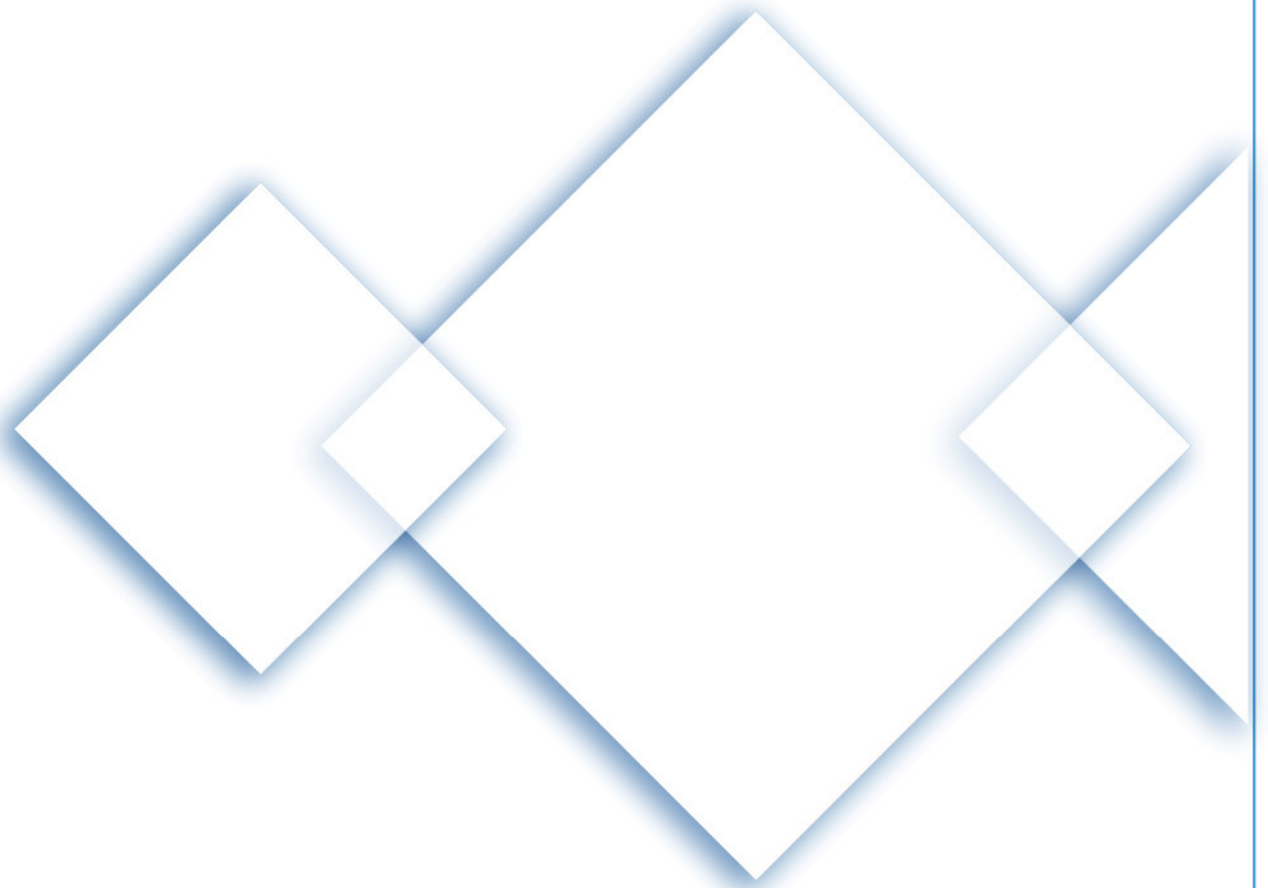
From 01-Jan-2009 to 06-Feb-2009



# Actual Demand vs I(UK) & Storage Outturn

From 01-Jan-2009 to 06-Feb-2009





# Operational Overview

---

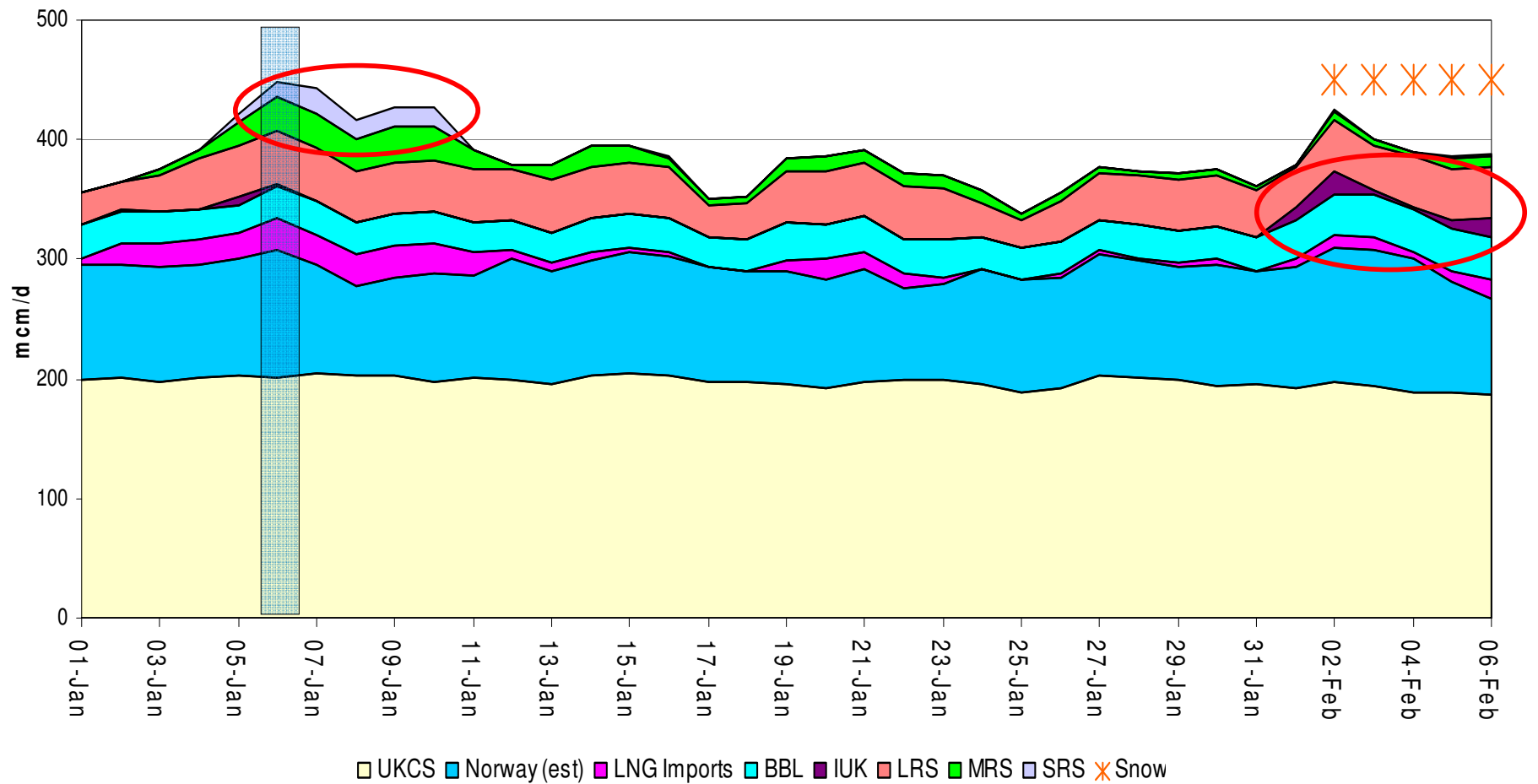
**Supply and Storage**

**nationalgrid**

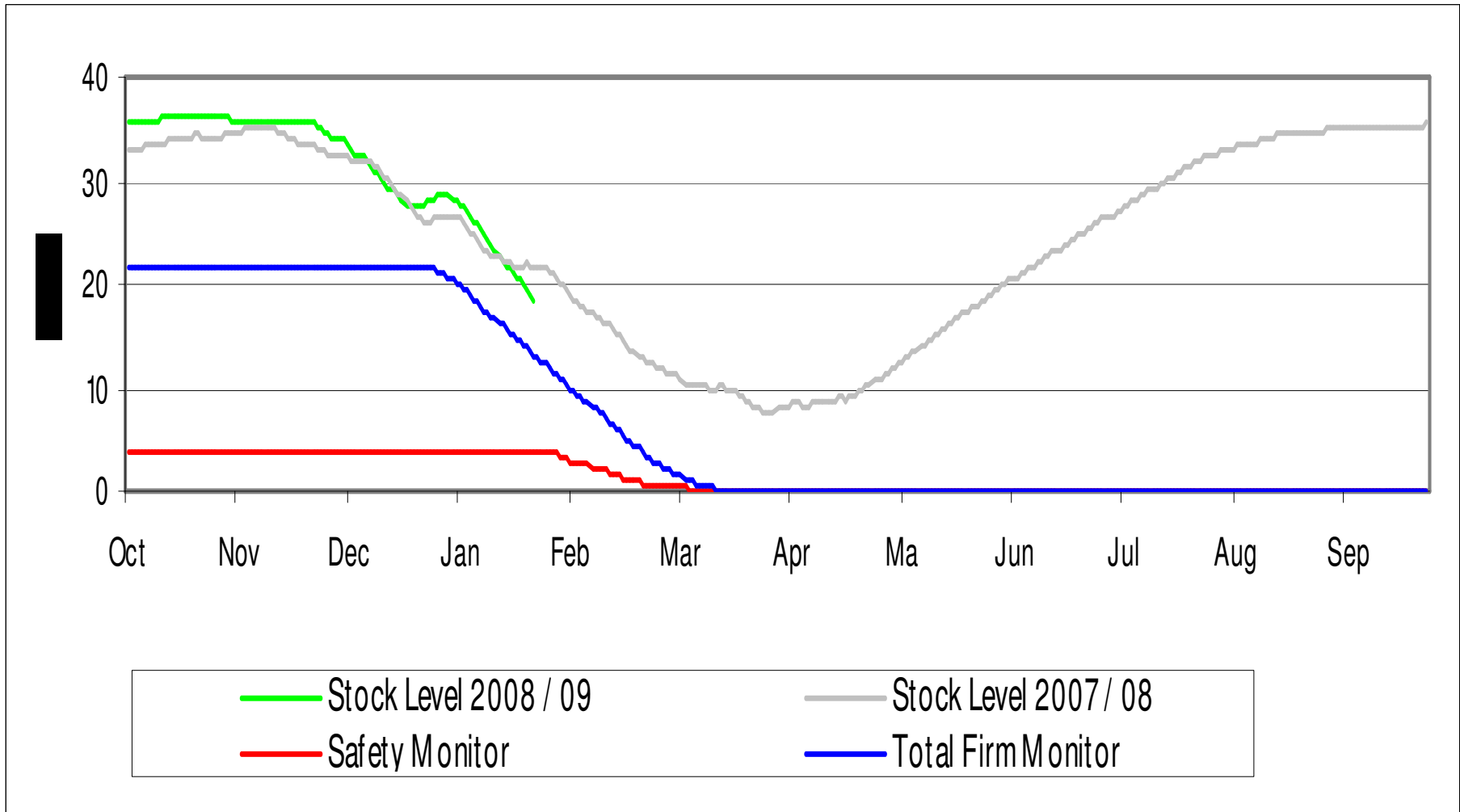
The power of action.™

# Gas Supply

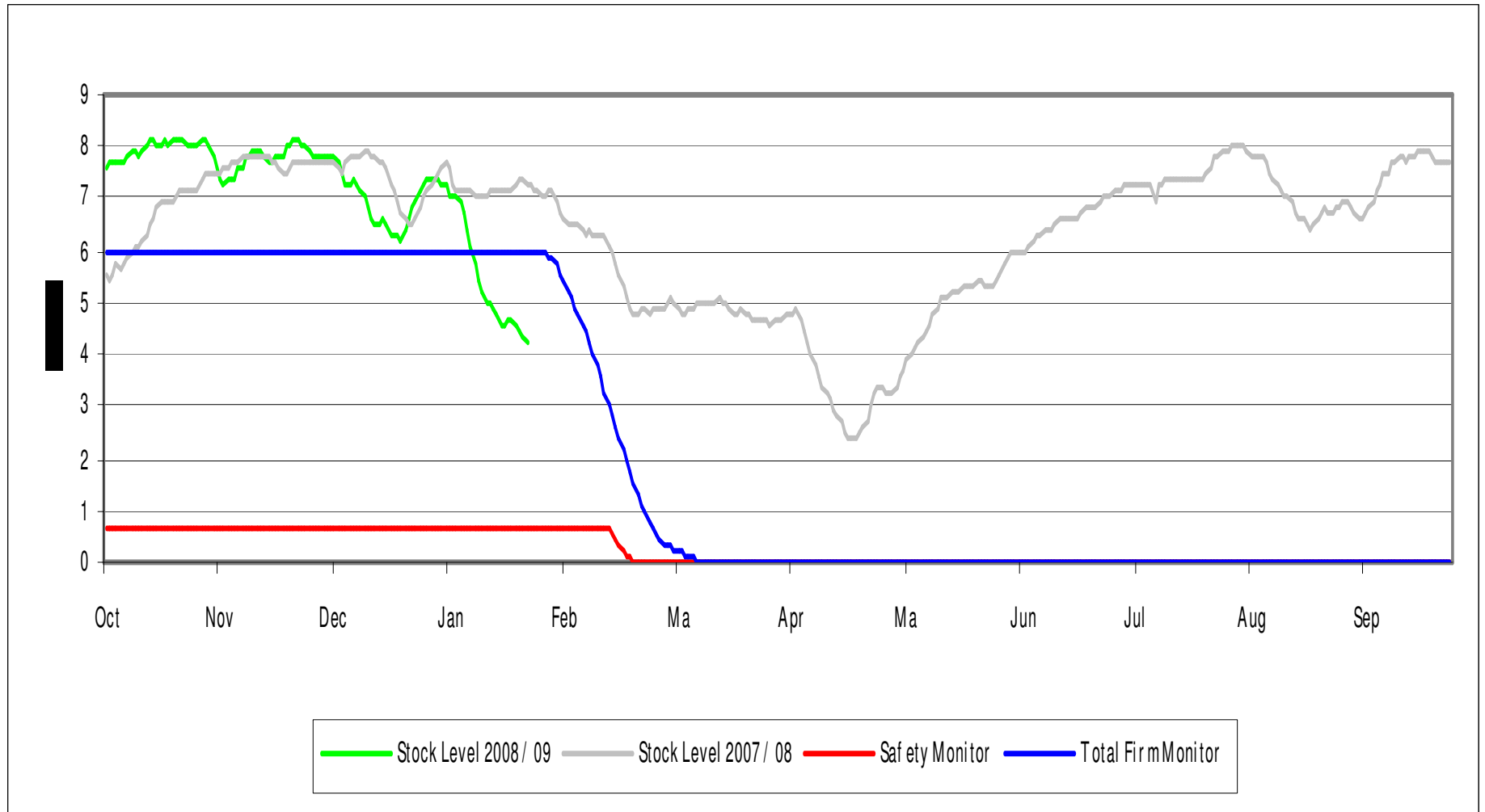
From 01-Jan-2009 to 06-Feb-2009



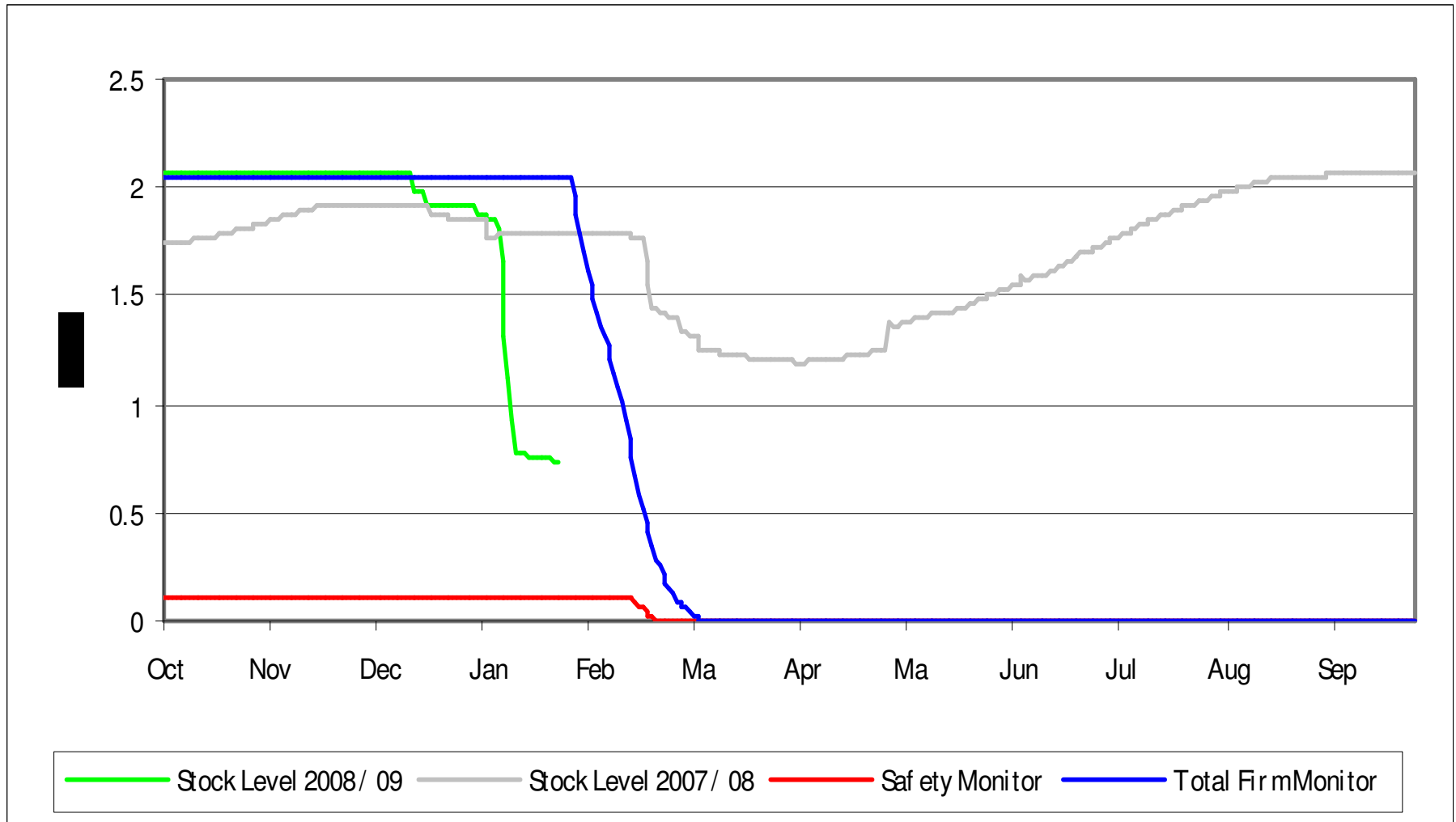
# Storage Stocks - LRS

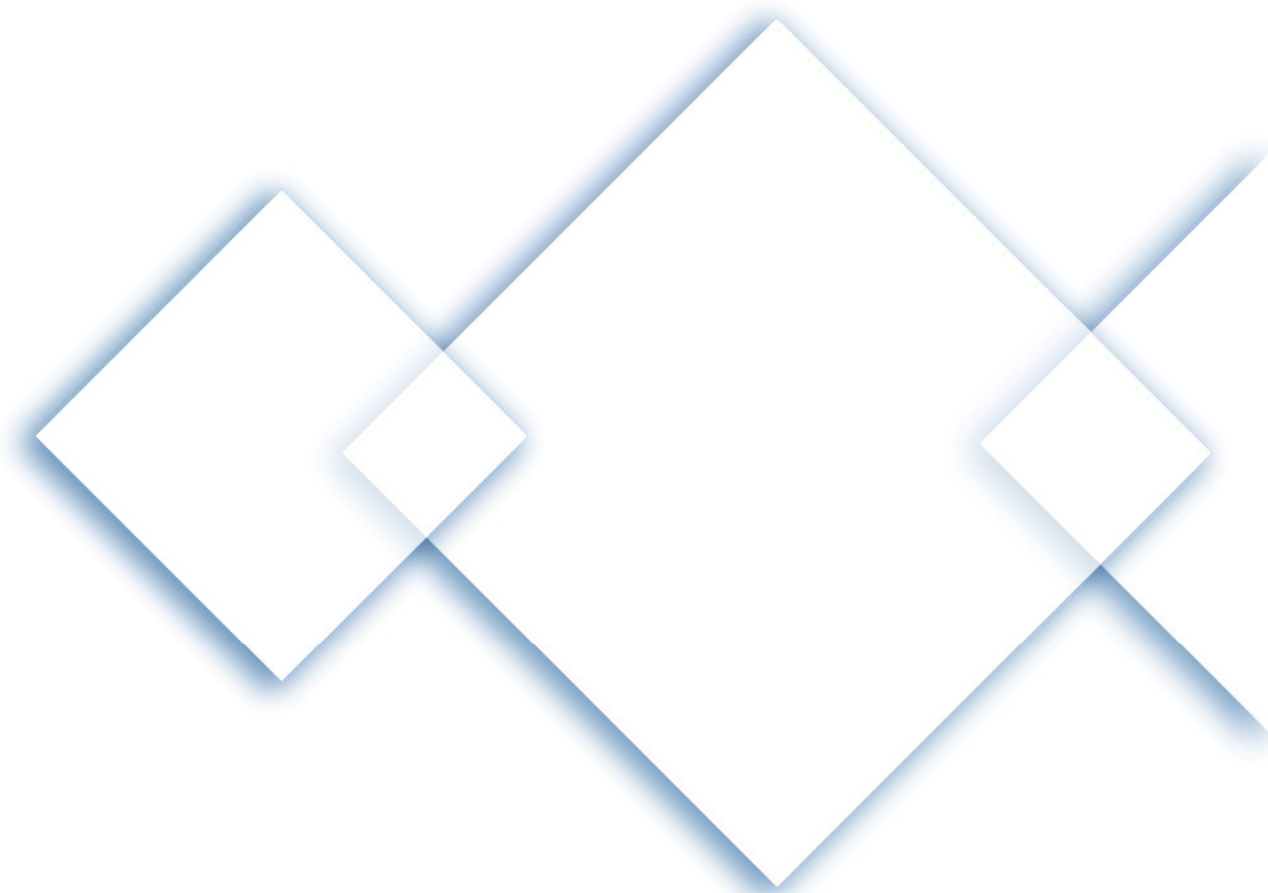


# Storage Stocks - MRS



# Storage Stocks - SRS





# Operational Overview

---

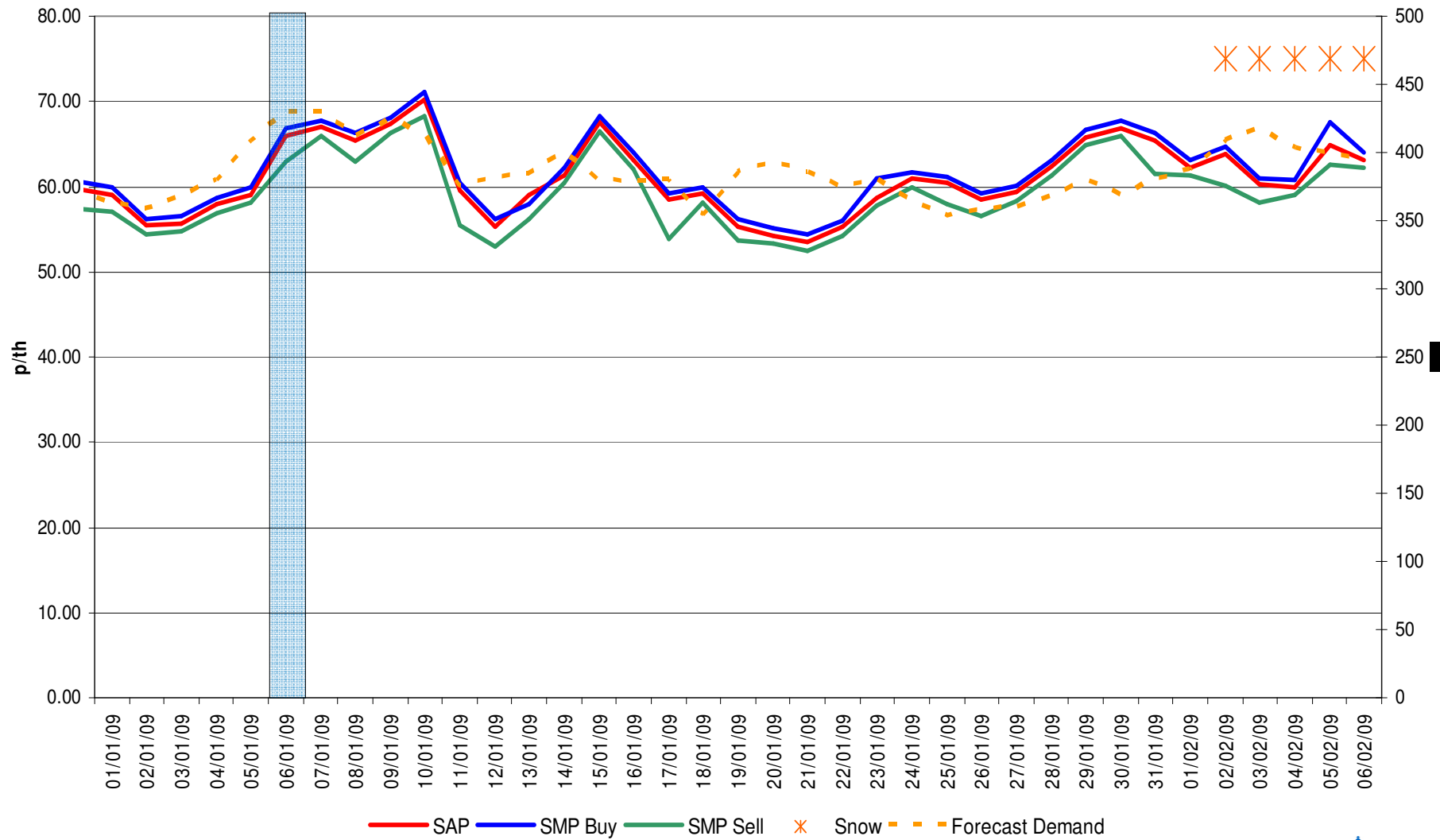
**Market and Prices**

**nationalgrid**

The power of action.™

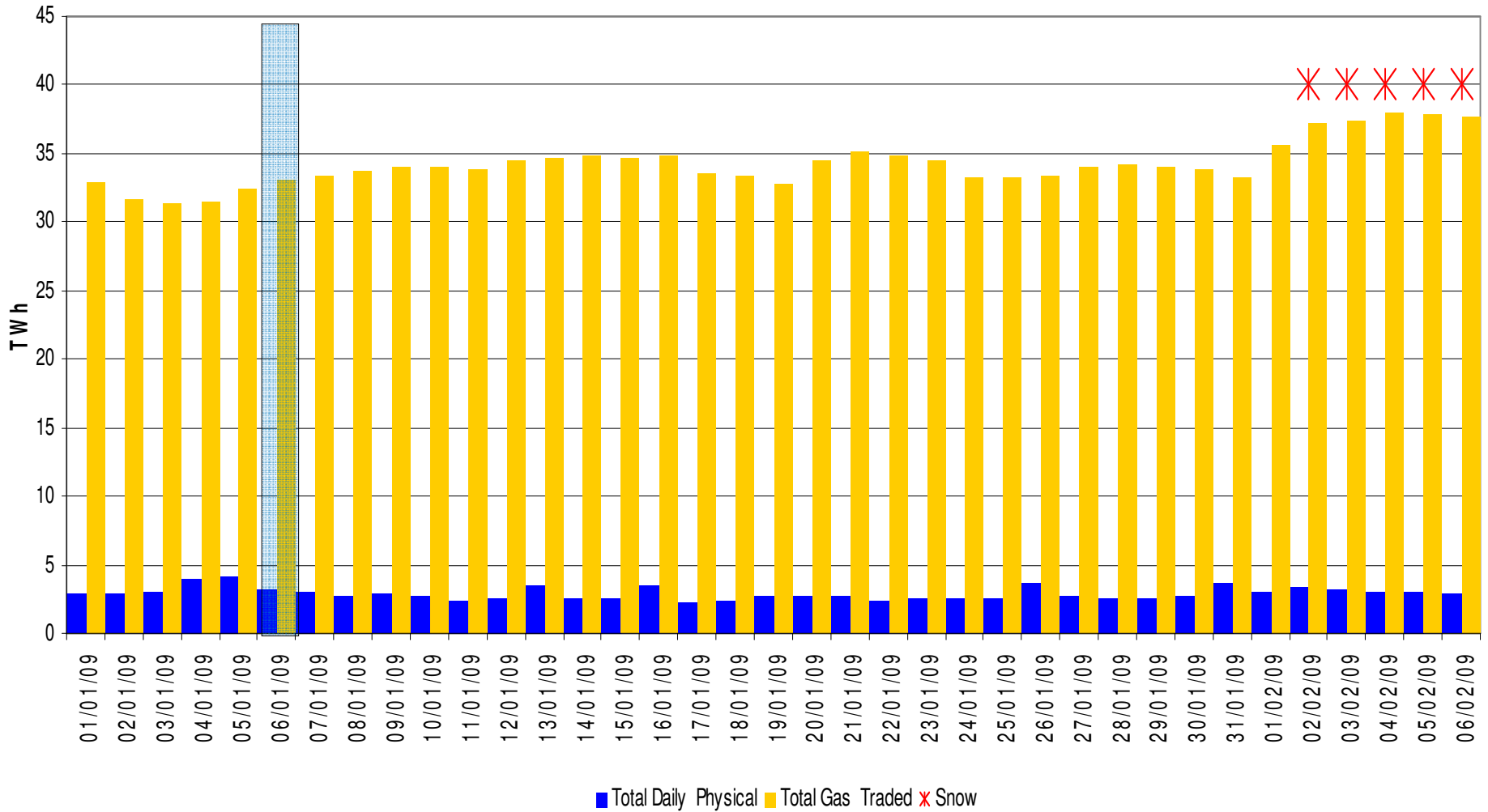
# System Prices

From 01-Jan-2009 to 06-Feb-2009



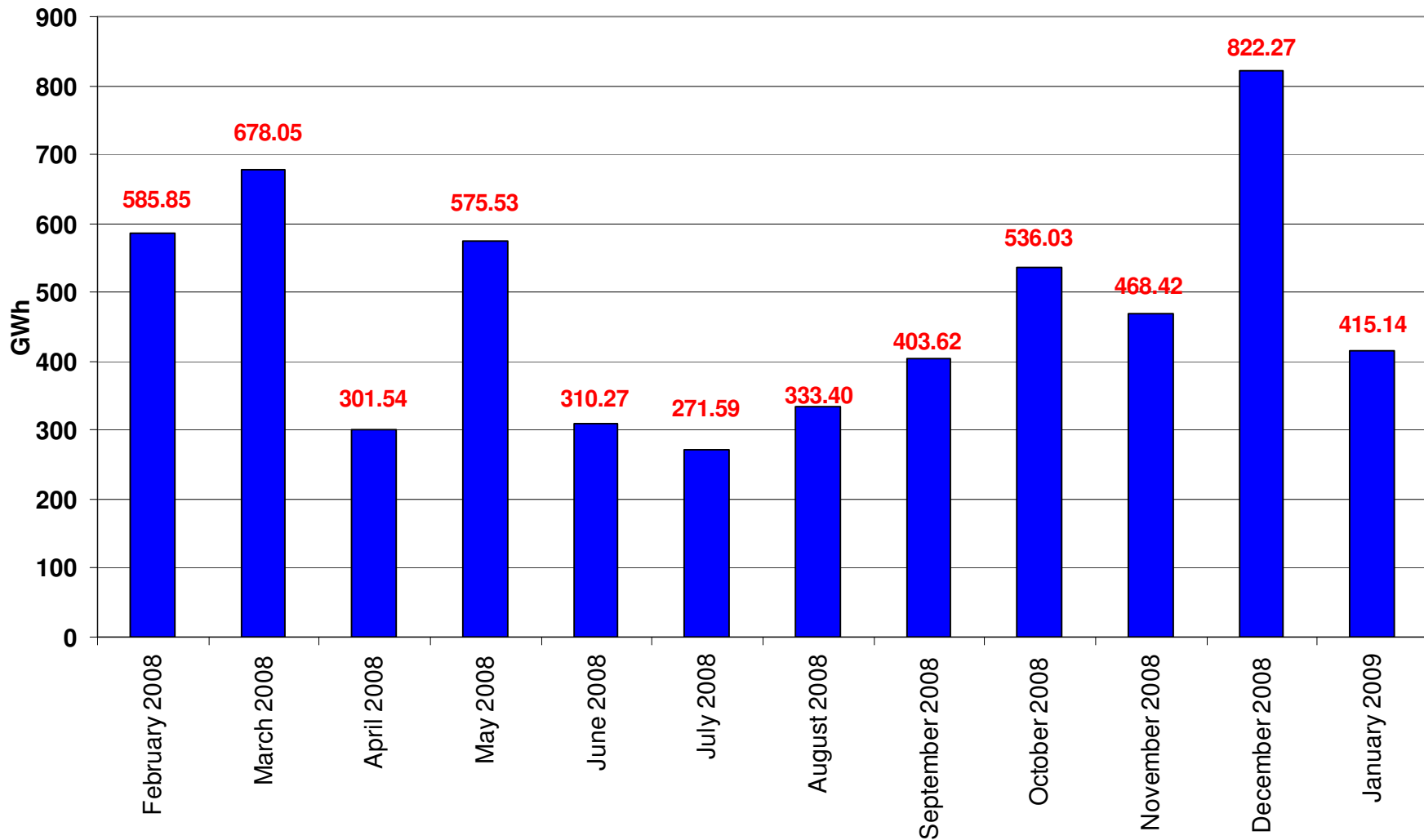
# All NBP Trades vs NBP Gas Flows

From 01-Jan-2009 to 06-Feb-2009



# Transporter Energy Traded on the OCM – By Market

From Feb-2008 to Jan-2009



■ Locational for Locational Reasons 
 ■ Locational for Price 
 ■ Physical 
 ■ Title

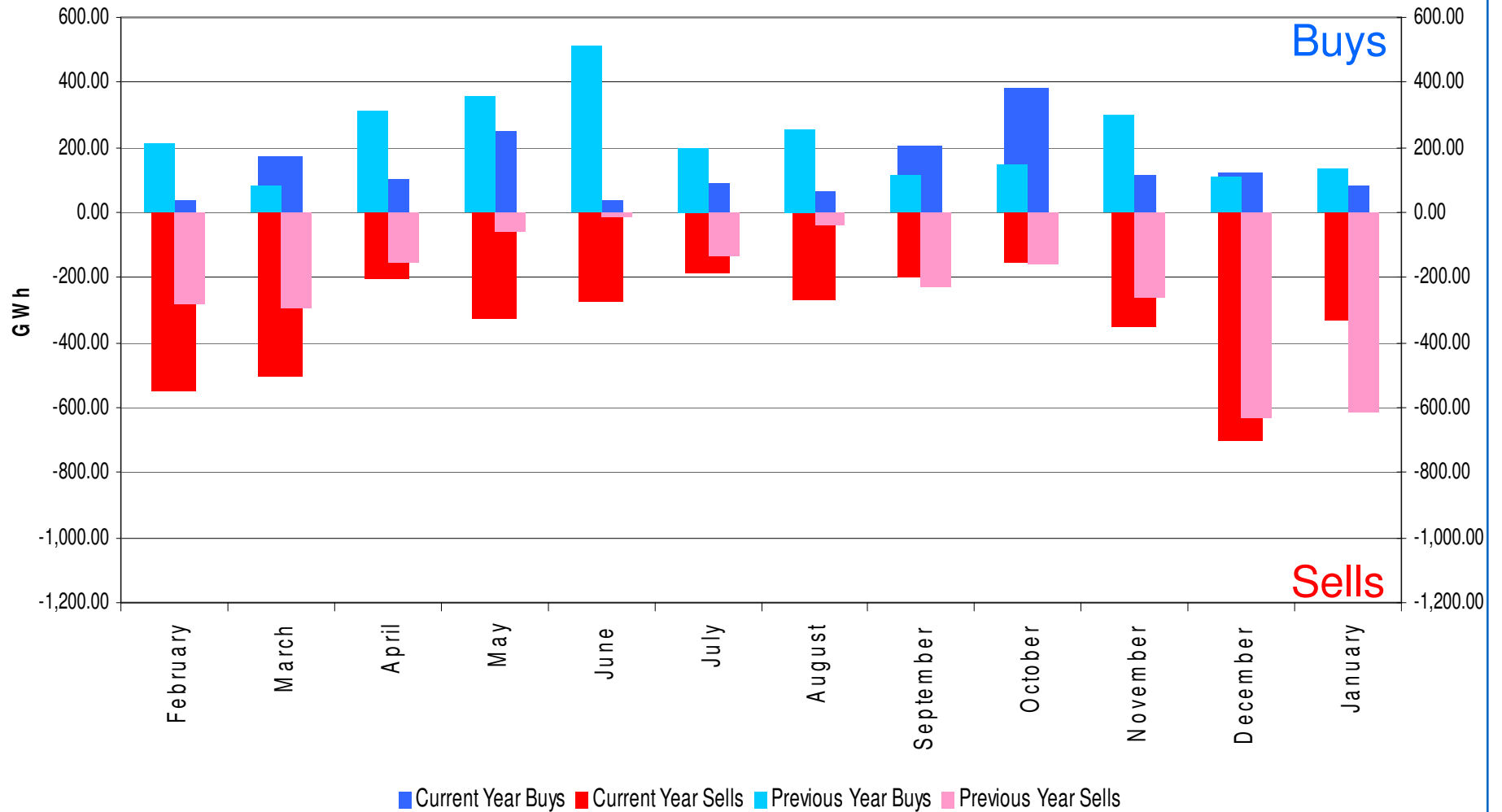
**nationalgrid**

The power of action.

# Transporter Energy Traded on the OCM – Buys / Sells

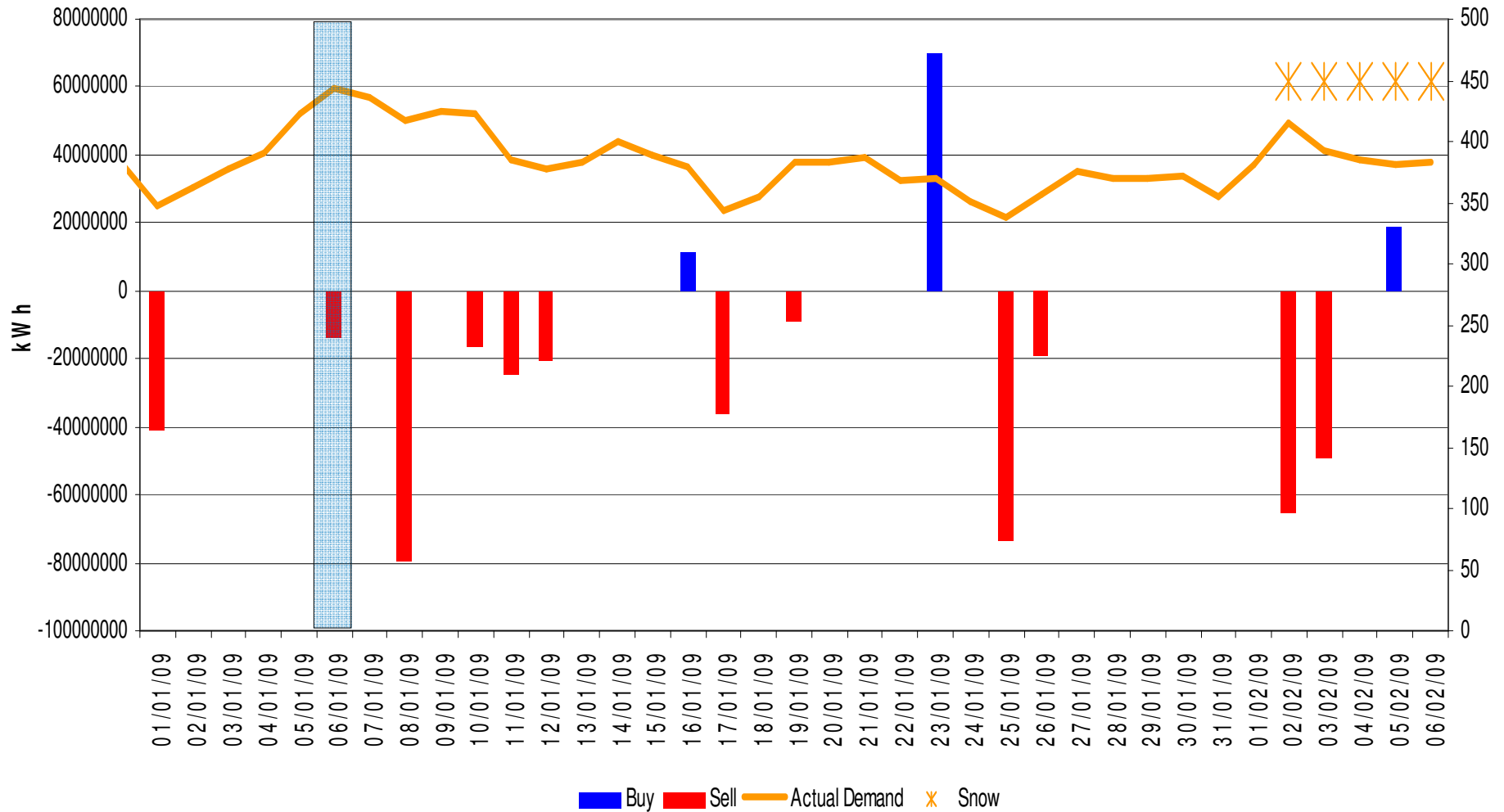
Comparison between 2008 and 2009 – Feb to Dec.

Comparison between 2009 and 2008 – Jan



# Transporter Energy Traded on the OCM – Buys and Sells by Day

From 01-Jan-2009 to 06-Feb-2009



# Days of Default SMP Prices

From 01-Jan-2009 to 31-Jan-2009

## Percentage of Days of Default SMP

January 2009

**SMP Buy**

**SMP Sell**

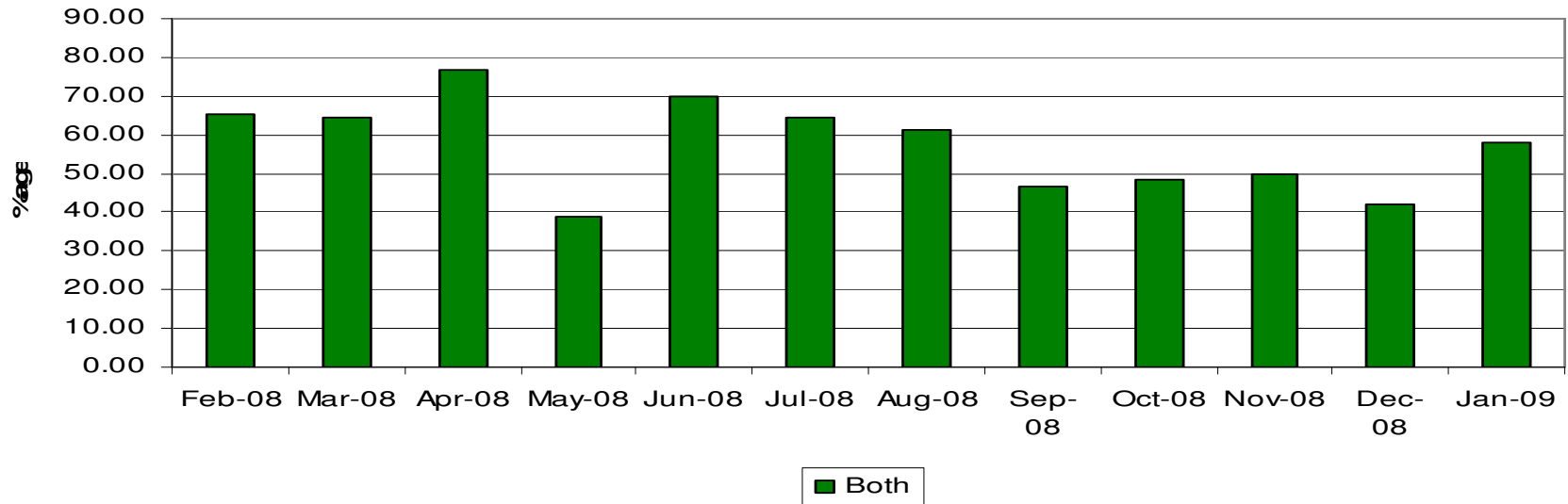
**Both**

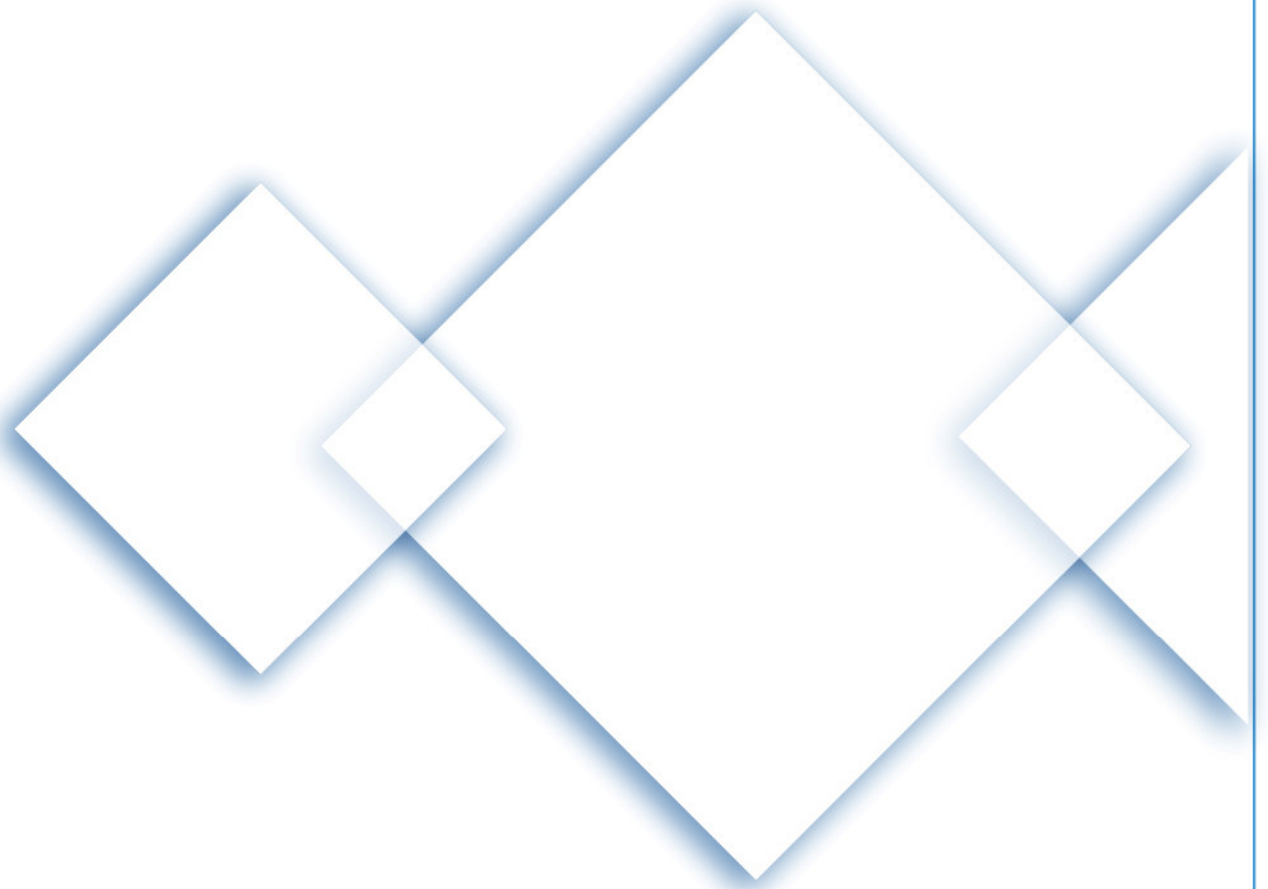
93.5%

64.5%

58.1%

### Days Of Default SMP





# Operational Overview

---

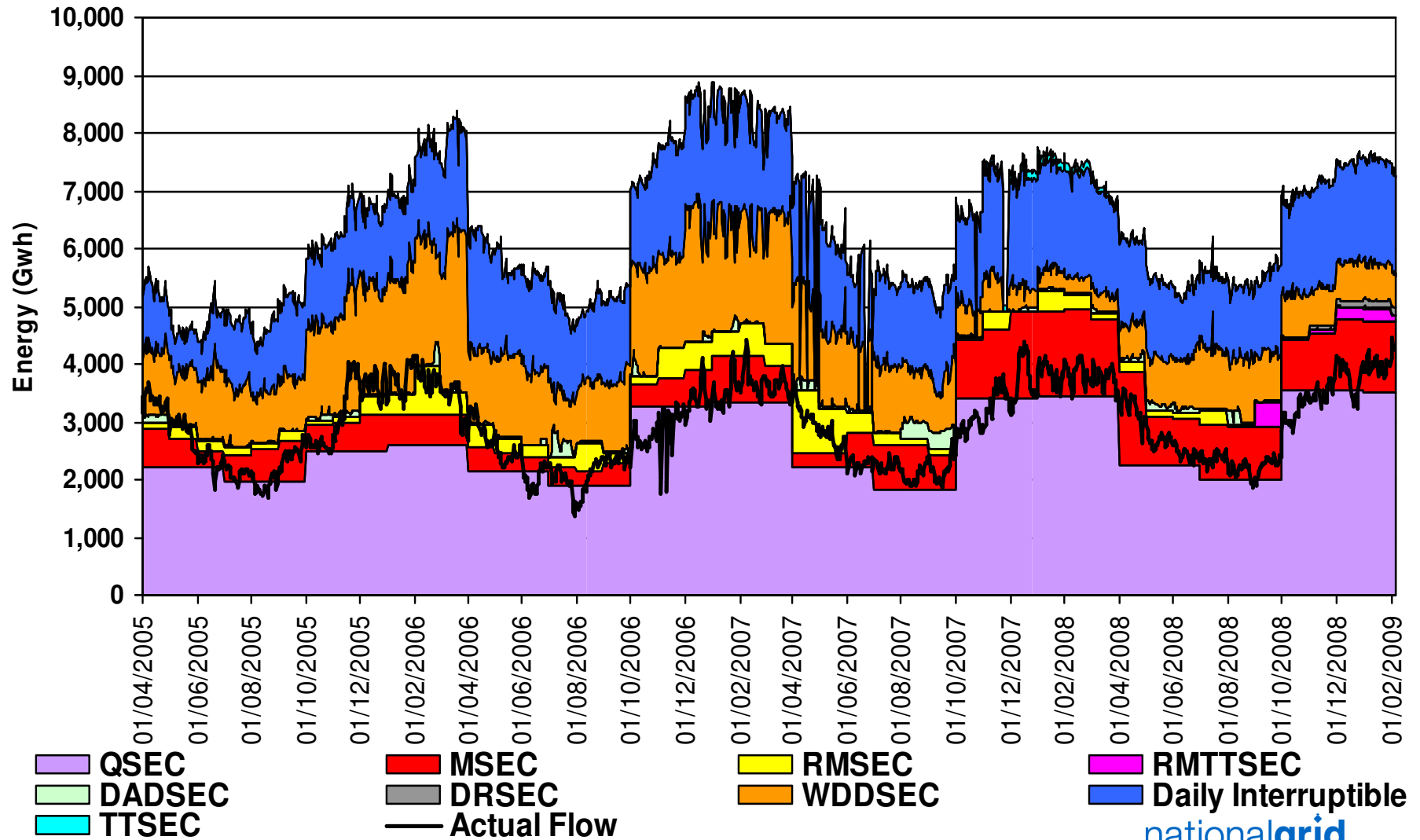
**Capacity**

**nationalgrid**

The power of action.™

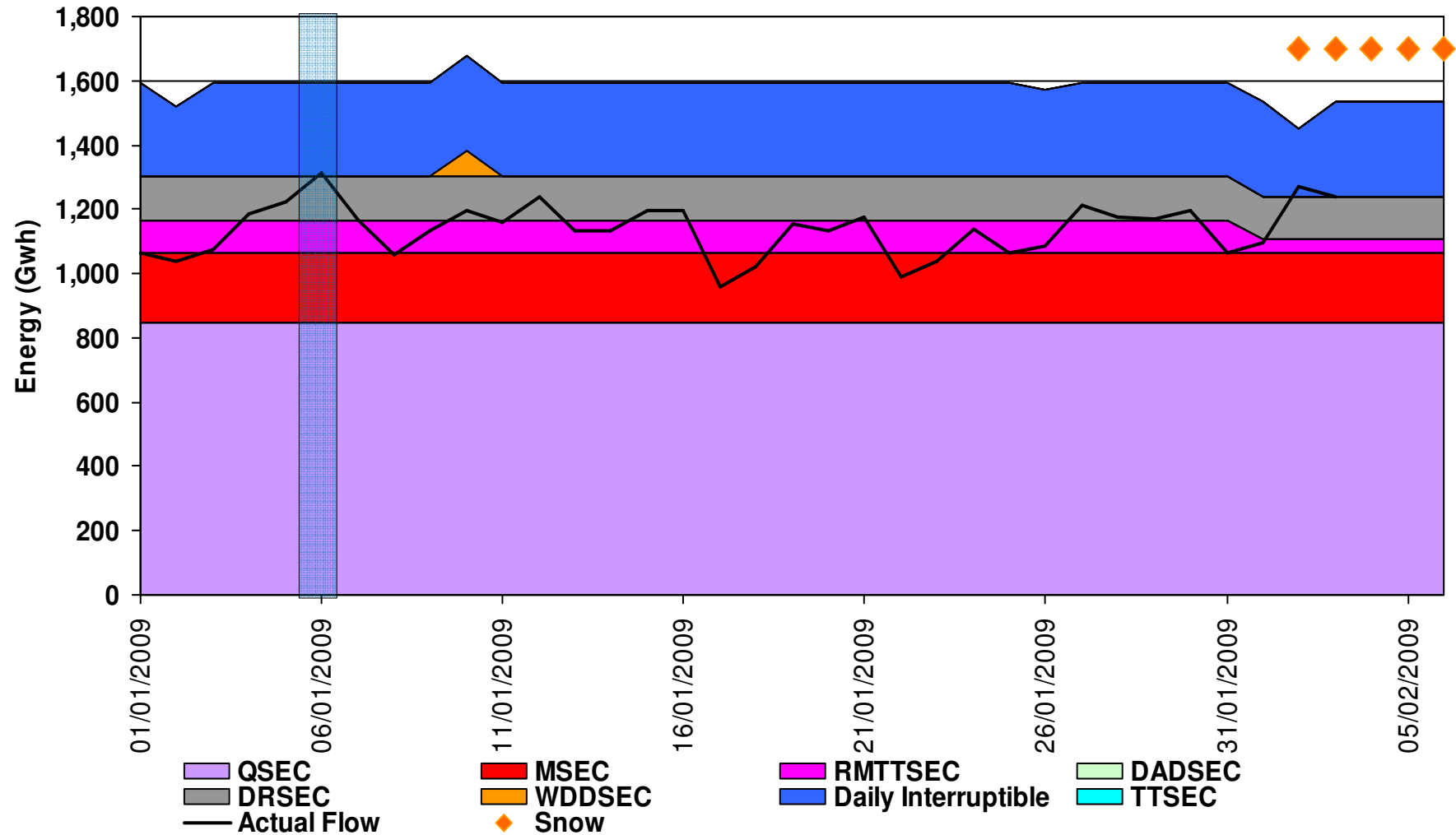
# Capacity Sold vs Actual Flows (For the 6 Major ASEPS)

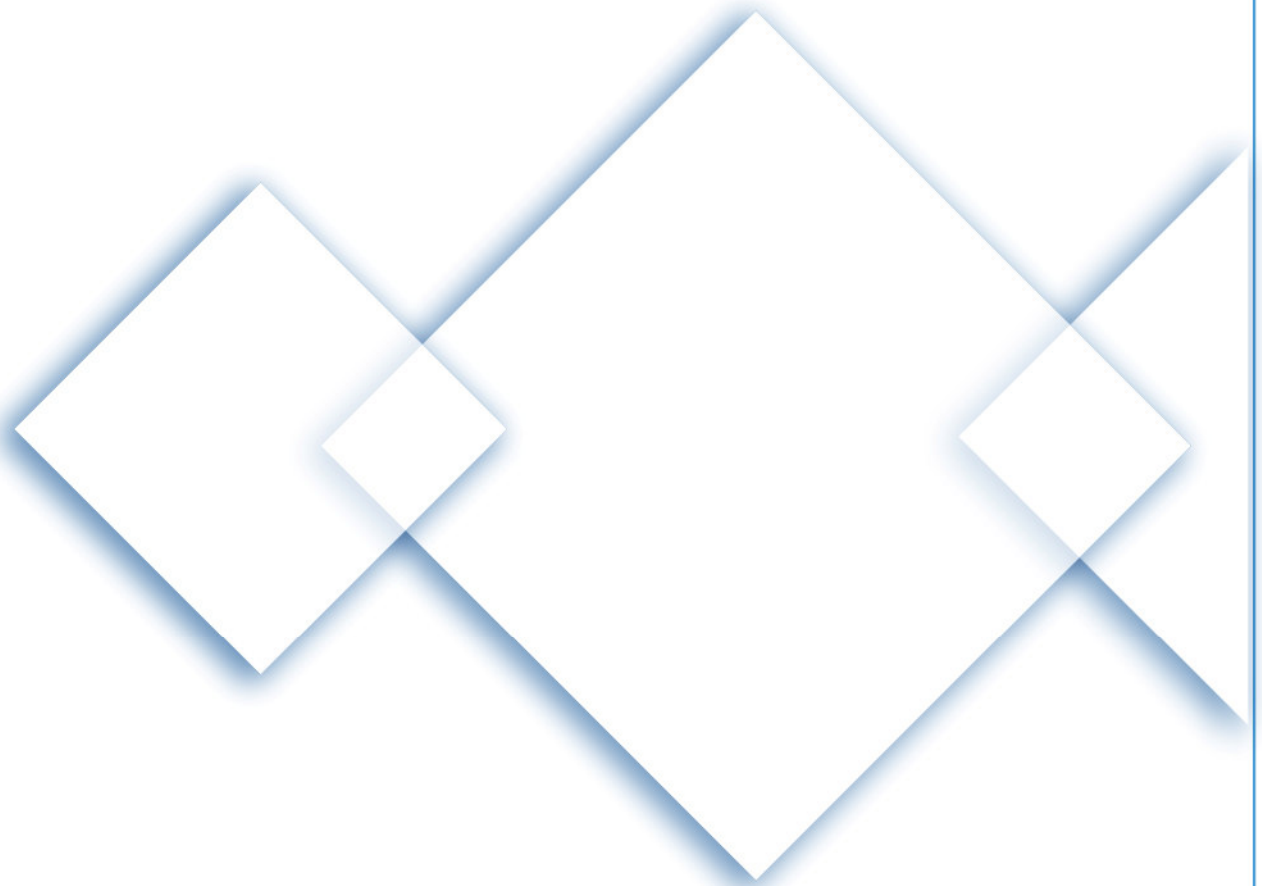
From 01-Apr-2005 to 06-Feb-2009



# Easington – Capacity Sold vs Actual Flows

From 01-Jan-2009 to 06-Feb-2009





# Throughput and Neutrality

---

**December 2008**

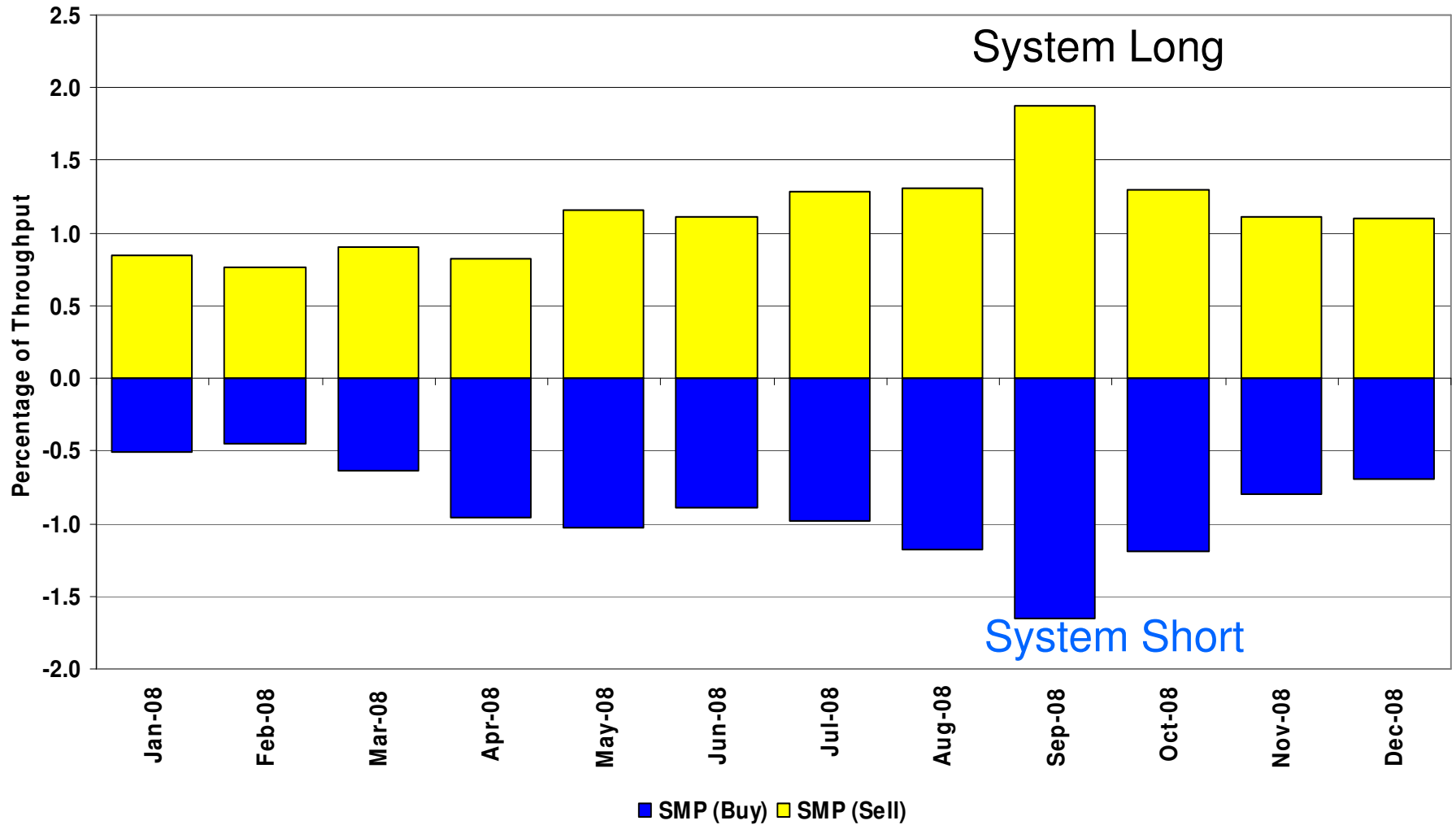
The Throughput and Neutrality information is dependant on Entry closeout and therefore the data is only available for the period up until 31-December-2008.

**nationalgrid**

The power of action.™

# System Level Imbalance as a % of Throughput

From 01-Jan-2008 to 31-Dec-2008

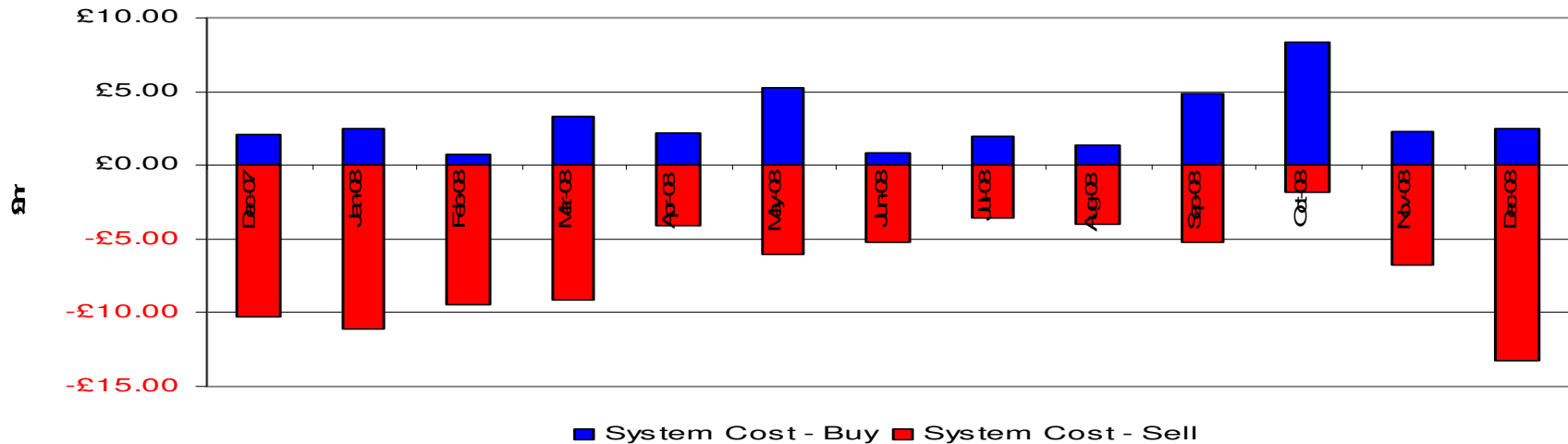


# Transporter Actions on OCM Mechanism Revenues / Costs

From 01-Oct-2008 to 31-Dec-2008

	Quantity (TWh)	Average Price (p/KWh)	Average Price (p/therm)	Cost (£m)
System Buy	0.620	2.1228	62.19	£13.16
System Sell	-1.207	1.8076	52.96	-£21.82

**Net Position 0.587 Sell -£8.66**



# Imbalance Gas Revenues / Costs

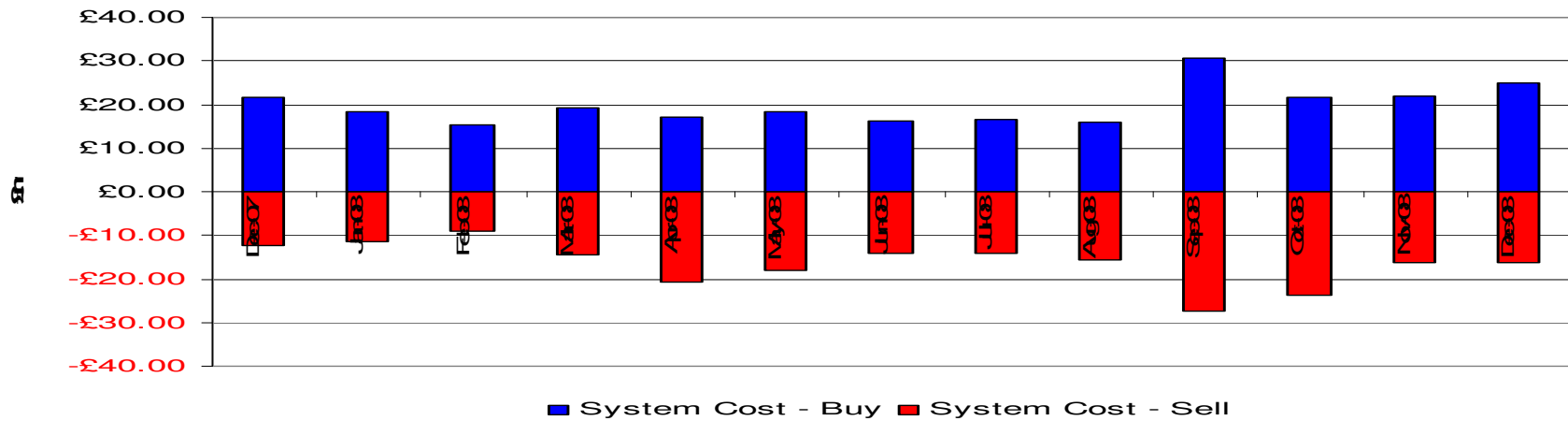
From 01-Oct-2008 to 31-Dec-2008

System	Quantity (TWh)	Average Price (p/KWh)	Average Price (p/therm)	Cost £m
System Buy	3.86	1.7794	52.13	£68.63
System Sell	-2.91	1.9368	56.74	-£56.43

## Net Position

**0.95 Buy**

**£12.20**

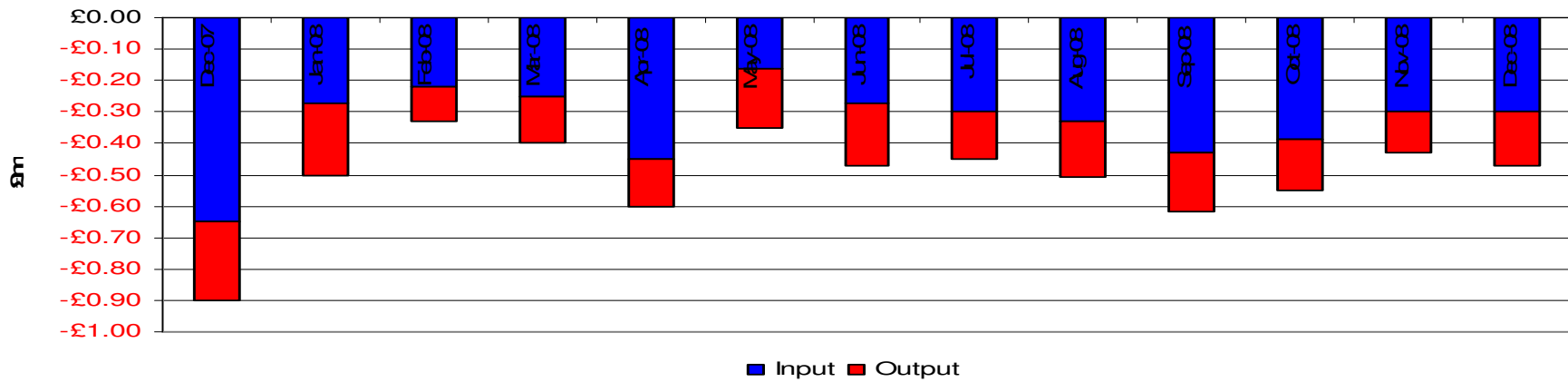


# Scheduling Revenues

From 01-Oct-2008 to 31-Dec-2008

	Cost £m
Input	-£0.99
Output	-£0.46

**Total -£1.45**



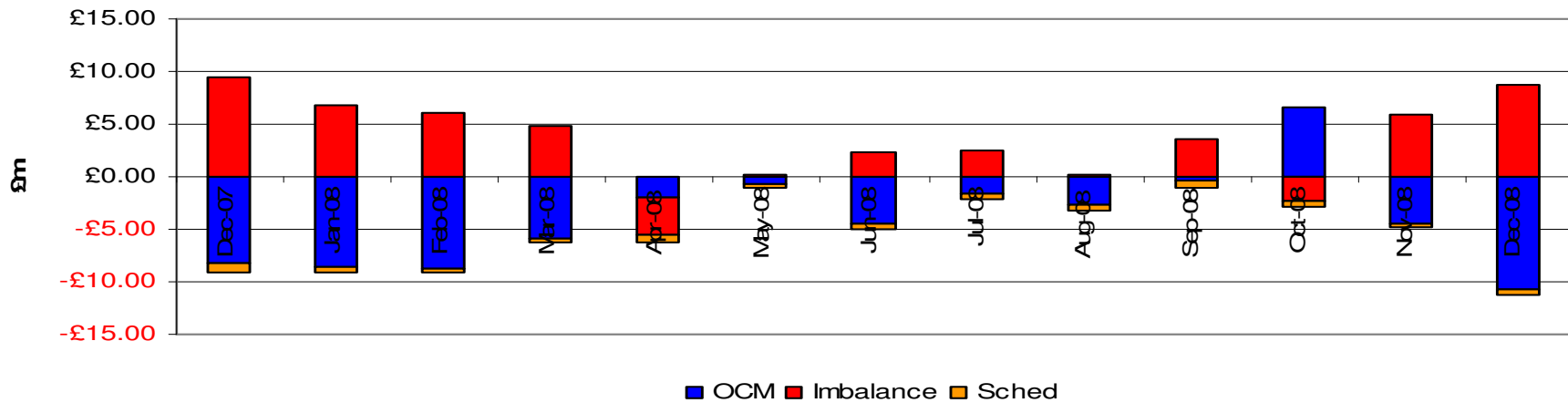
# Balancing Costs

From 01-Oct-2008 to 31-Dec-2008

	£m
OCM/Flex Gas	-8.66
Imbalance Gas	12.20
Scheduling	-1.45

**Balancing Cost** **2.09**

**(0.0006p/KWh or 0.0185p/Therm of Throughput)**



## Energy Neutrality : Gas Year Comparison

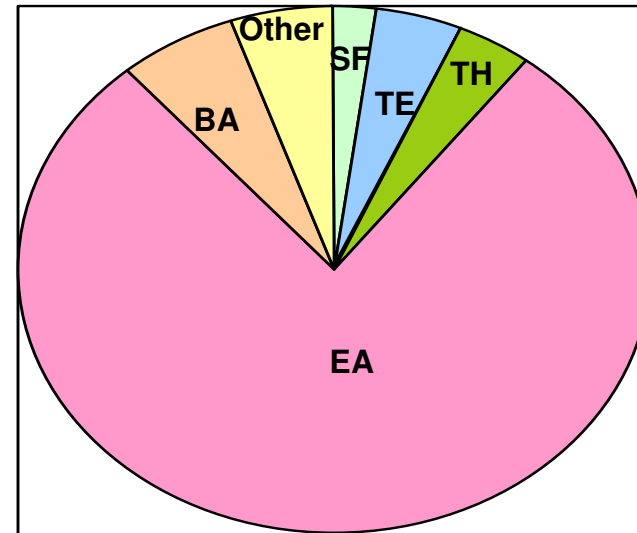
(For October to December)

	<b>Gas Year 2007/2008</b>	<b>Gas Year 2008/2009</b>
<b>Neutrality by Throughput</b> <b>(p/therm)</b>	<b>0.0054</b>	<b>0.0185</b>

# Capacity Neutrality – Revenues From DSEC & DAI

From 01-Apr-2008 to 31-Dec-2008

ASEP	Revenue
St Fergus	£42,371.42
Teesside	£89,261.34
Barrow	£1,277.70
Theddlethorpe	£76,133.67
Easington	£1,523,468.48
Bacton	£121,972.64
Other	£102,980.34
<b>TOTAL</b>	<b>£1,957,465.39</b>



## Capacity Neutrality – Prompt Buy Backs

From 01-Apr-2008 to 31-Dec-2008

<b>ASEP</b>	<b>Cost</b>	<b>No.of days</b>	<b>Volume (kWh)</b>
St Fergus	£0	0	0
Teesside	£0	0	0
Barrow	£0	0	0
Theddlethorpe	£0	0	0
Easington	£0	0	0
Bacton	£0	0	0
<b>TOTAL</b>	<b>£0</b>	<b>0</b>	<b>0</b>

## Capacity Neutrality – Revenues From Overruns

From 01-Apr-2008 to 31-Dec-2008

Month	Revenue
April 2008	-£74,782.95
May 2008	-£285,586.70
June 2008	-£18,191.35
July 2008	-£299.65
August 2008	-£13,489.27
September 2008	-£275,737.07
October 2008	-£5,841.38
November 2008	-£2,663.34
December 2008	-£93,750.43
<b>Total</b>	<b>-£770,342.14</b>

## Capacity Neutrality – Capacity Management Agreement

From 01-Apr-2008 to 31-Dec-2008

<b>Month</b>	<b>Cost</b>
April 2008	£0.00
May 2008	£0.00
June 2008	£0.00
July 2008	£0.00
August 2008	£0.00
September 2008	£0.00
October 2008	£3,441.00
November 2008	£138,820.42
December 2008	£351,128.40
<b>Total</b>	<b>£493,389.82</b>

## Capacity Neutrality – Net Cost/Revenue

From 01-Apr-2008 to 31-Dec-2008

<b>DSEC/DAI Revenue</b>	<b>-£1,957,465.59</b>
<b>Buy back costs</b>	<b>+£0.00</b>
<b>Capacity Management Agreement</b>	<b>+£493,389.82</b>
<b>Overrun Revenue</b>	<b>-£770,342.14</b>
<b>Net Revenue</b>	<b>-£2,234,417.91</b>