

5 year forecast of Transmission Network Use of System tariffs

William Kirk-Wilson

Senior Commercial Analyst Charging & Revenue

TCMF - 10 December 2007

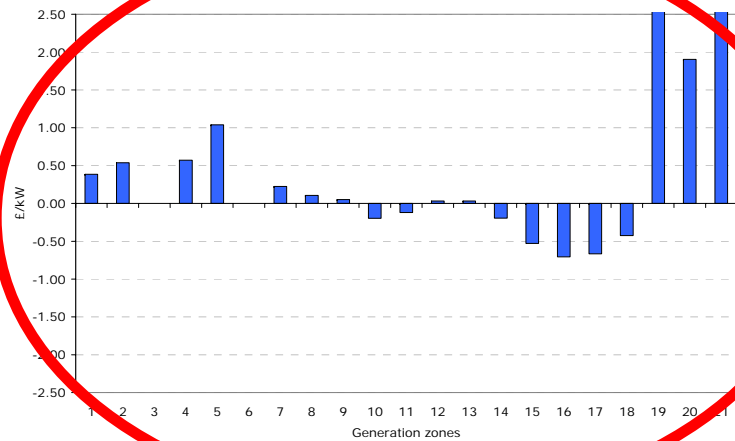
Introduction

- ◆ Overview of methodology
- ◆ Source data
- ◆ General trends
- ◆ 2008/9
- ◆ 2009/10 and later years

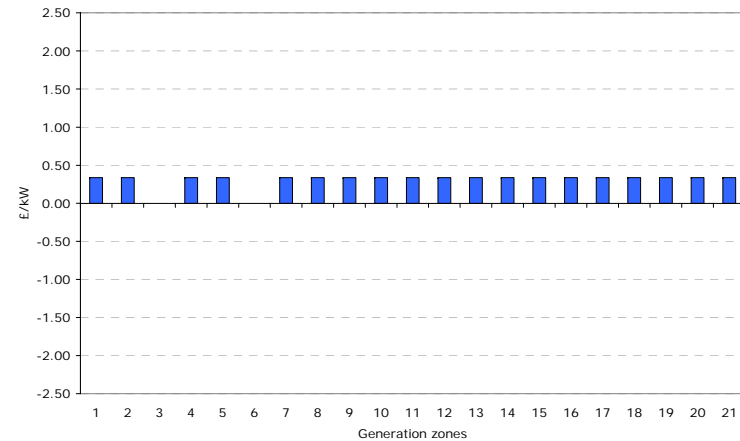


Methodology

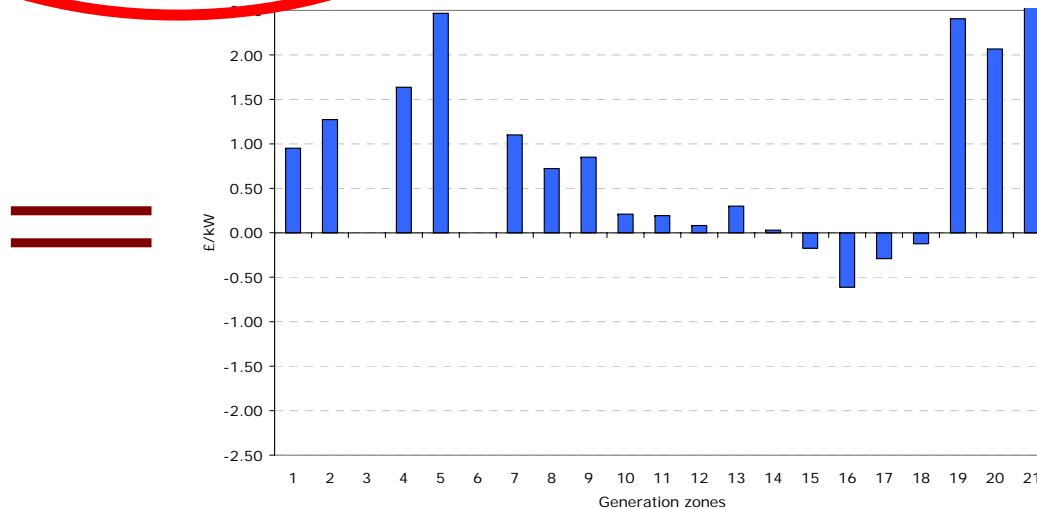
Transport model (locational element)



Tariff model (residual element)



Final Tariffs



Source data – Seven Year Statement

- ◆ Demand as per user submission
- ◆ Network as per SYS
- ◆ Generation as per contracted background

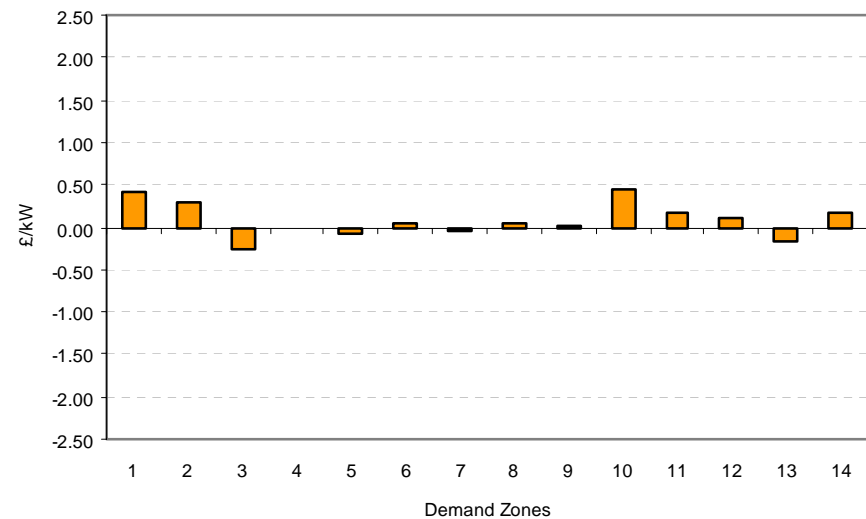
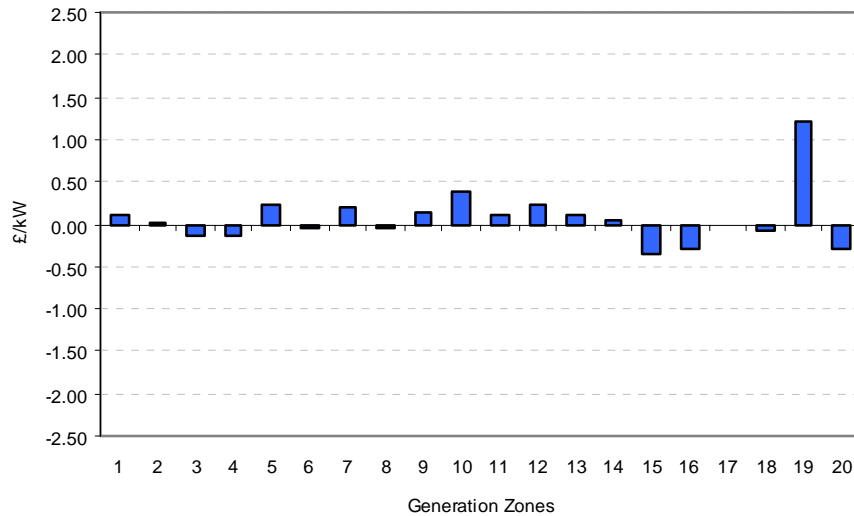
	Current tariffs MW	2008/9 ΔMW	2009/10 ΔMW	2010/11 ΔMW	2011/12 ΔMW	2012/13 ΔMW
Total	74,810	1,974	9,704	6,259	6,320	2,670

General trends

- ◆ If generation is added to a zone, the generation tariff will increase and the demand tariff will decrease. However if there is already a substantial amount of generation there, the change will be smaller.
- ◆ If generation is added at 132kV, the movements are generally more than if the generation was at 275kV or 400kV



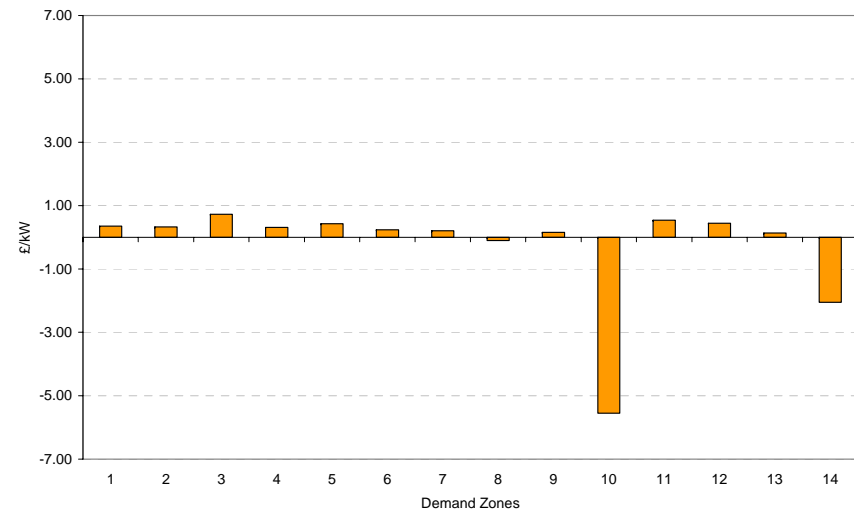
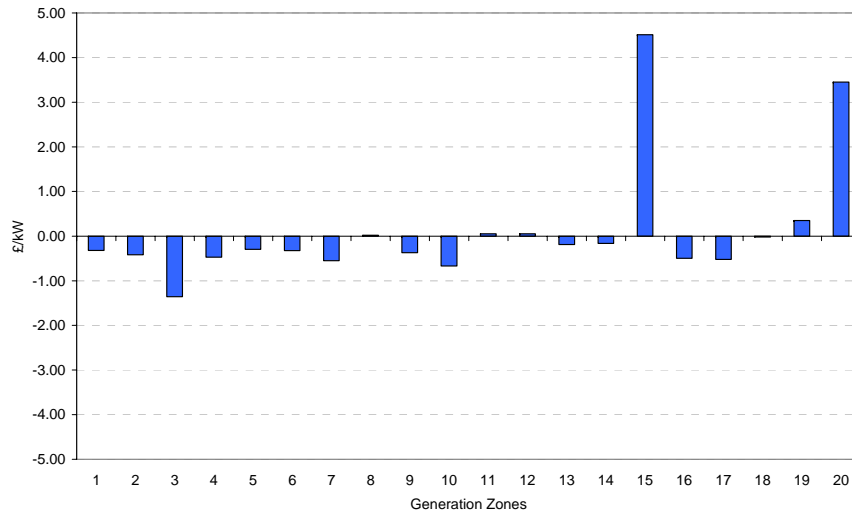
2008/9 Forecast locational movement



Dominant driver

- ◆ Marchwood (+900MW zone 19)

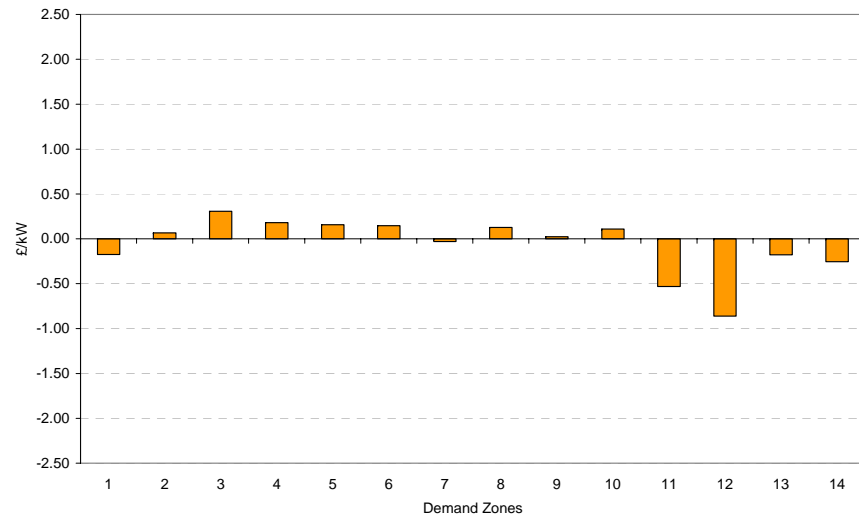
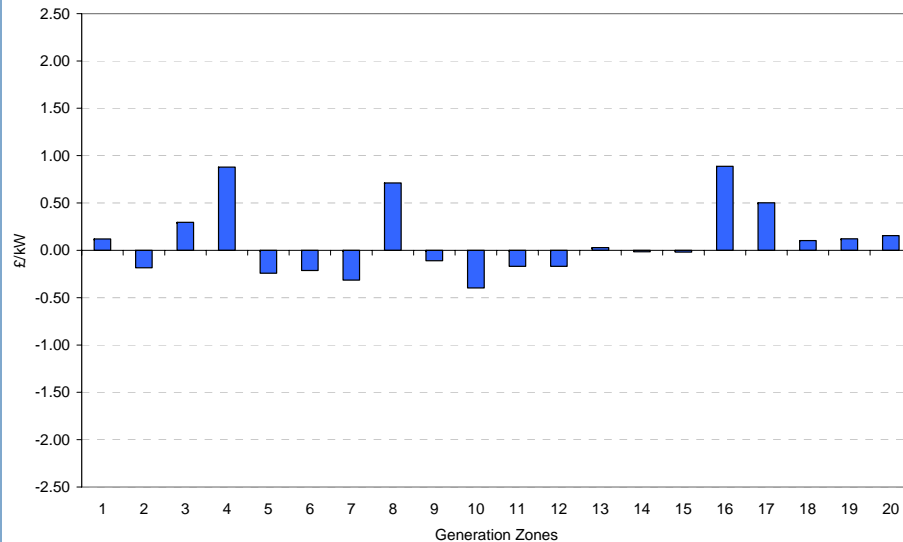
2009/10 Forecast locational movement



Dominant driver

- ◆ +9.7GW inc in generation including Pembroke, Langage, Edinbane Wind

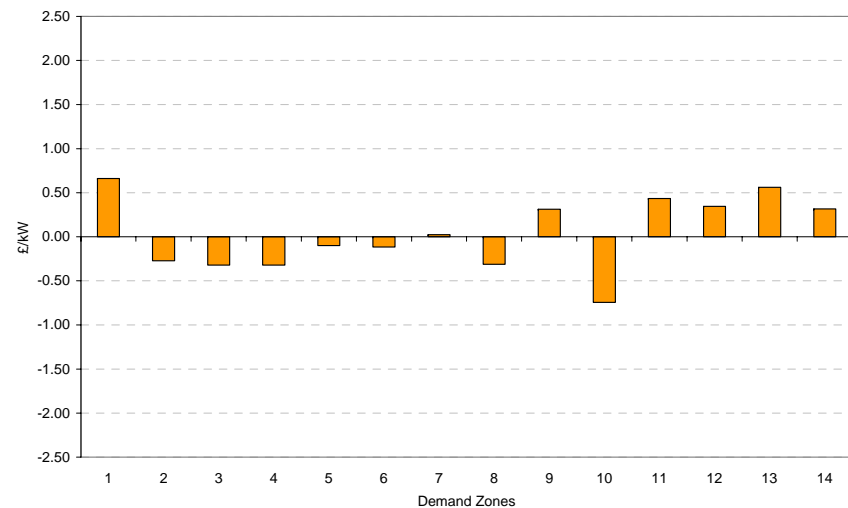
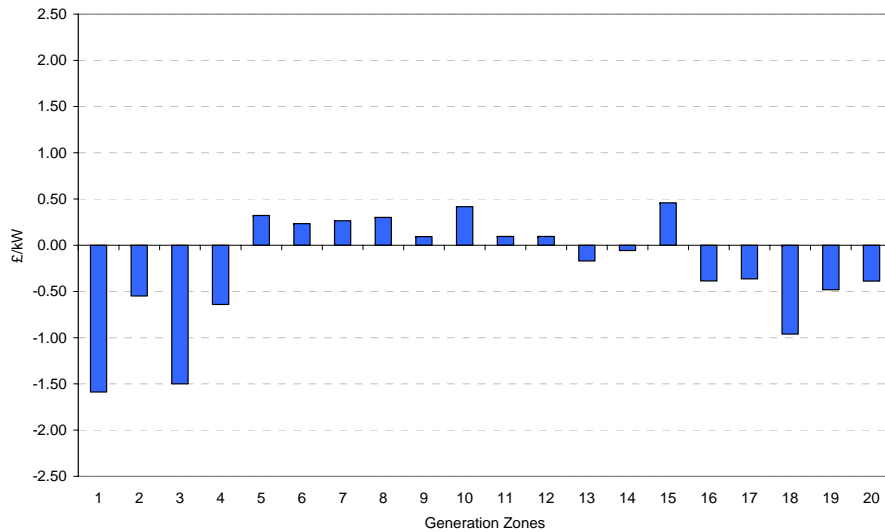
2010/11 Forecast locational movement



Dominant driver

- ◆ +6.3GW inc in generation
- ◆ Griffin Wind, Britned, Grain, London Array

2011/12 Forecast locational movement



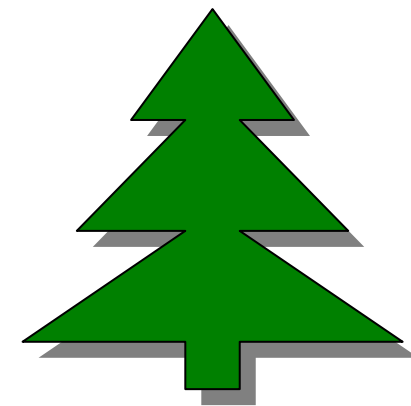
Dominant driver

- ◆ +6.3GW inc in generation
- ◆ Beauly - Denny

2008/9 TNUoS tariffs publication dates

- ◆ Draft tariffs published before Christmas
- ◆ Final tariffs published end of January

- ◆ Welcome any feedback on:
 - ◆ content of the report
 - ◆ analysis included
 - ◆ publication timings



nationalgrid